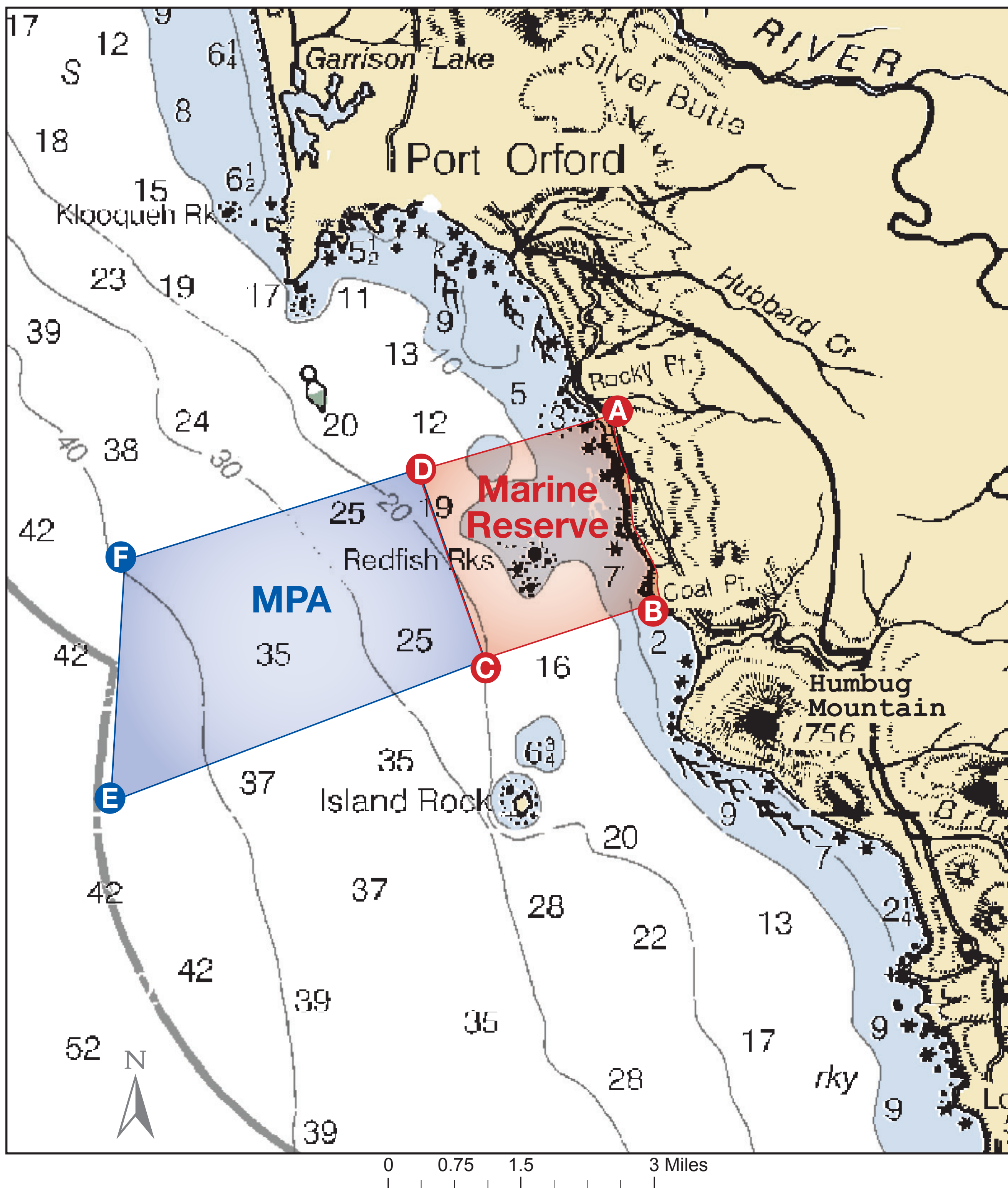


# Harvest Restrictions

## Redfish Rocks

Marine Reserve and Marine Protected Area (MPA)



### Marine Reserve

#### NO

- Take of any fish, invertebrates, seaweeds or wildlife
- Deployment of any fishing gear

#### You Can

- Remove fishing gear that has drifted into the area (call Oregon State Police for permission)
- Transit with catch onboard

### Marine Protected Area (MPA)

#### NO

- Take of any fish, invertebrates, seaweeds or wildlife except:

#### You Can

- Take crab
- Take salmon by troll

### Shoreline Area

#### You Can

- Participate in all legal take, such as clamming, above the low tide line

Point	Latitude	Longitude
<b>A</b>	42°42.96'	-124°27.78'
<b>B</b>	42°41.52'	-124°27.18'
<b>C</b>	42°41.16'	-124°28.86'
<b>D</b>	42°42.54'	-124°29.64'
<b>E</b>	42°40.25'	-124°32.50'
<b>F</b>	42°41.90'	-124°32.50'

This summary does not replace the official regulatory language found in the Oregon Administrative Rules. Please consult the complete text of the regulations in OAR 635-012 (ODFW), OAR 141-142 (DSL) and OAR 736-029 (OPRD).  
**To report violations please call State Police dispatch 1-800-452-7888.**  
 For any take not specified please consult the current fishing regulations or call ODFW 541-867-4741.

[www.oregonocean.info/marinereserves](http://www.oregonocean.info/marinereserves)

OREGON DEPARTMENT OF FISH AND WILDLIFE

