

# Carman Pasture Access Area



The Carman Pasture Access Area is a cooperative program between a private landowner and the Oregon Department of Fish and Wildlife Access and Habitat Program to maintain, by permission, public hunting access on private lands. The Carman Pasture Ranch Access Area north of Wallowa, OR provides public hunting opportunities for deer, elk, predators, turkey, and quail. All Oregon Department of Fish and Wildlife Regulations and Seasons Apply.

**Access Allowed:**  
April 1 - January 31

Hunting on private lands is a privilege, not a right. Private land hunting opportunities will remain in the future only if the property and rights of private landowners are respected! Abuse it and you will lose it!

**Access Permission:**

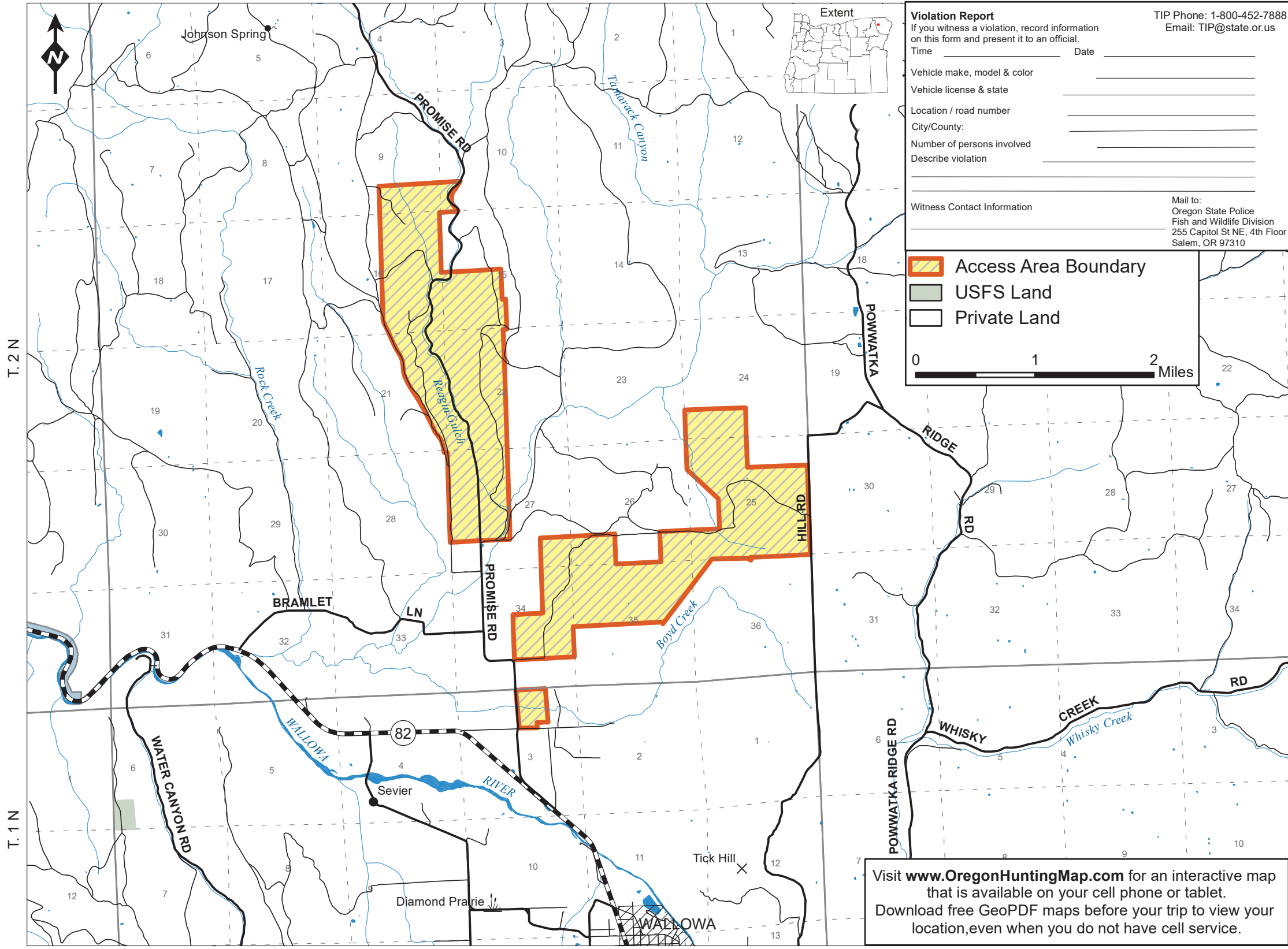
Hunters must obtain permission prior to hunting. Permission can be obtained by contacting the La Grande ODFW field office by phone at (541) 962-1838, between 8 AM and 5 PM Monday - Friday. Reservations will be booked on a first come, first served basis. Hunters who make reservations to hunt during a particular week, are ineligible to hunt the area the following week. Landowners reserve the right to refuse permission and close areas due to normal ranch operations.

**Area Regulations:**

- No Motorized Vehicles
- No camping or night-time use of private land
- No fires, be careful with cigarettes
- No littering, pick up any trash
- Report unlawful activities
- Respect landowners' rights and needs
- Leave all gates as you found them



\*This product is for informational purposes and may not have been prepared for, or be suitable for legal, engineering, or surveying purposes. Users of this information should review or consult primary data and information sources to ascertain the usability of the information.



T. 2 N

T. 1 N

R. 41 E

R. 42 E

R. 43 E