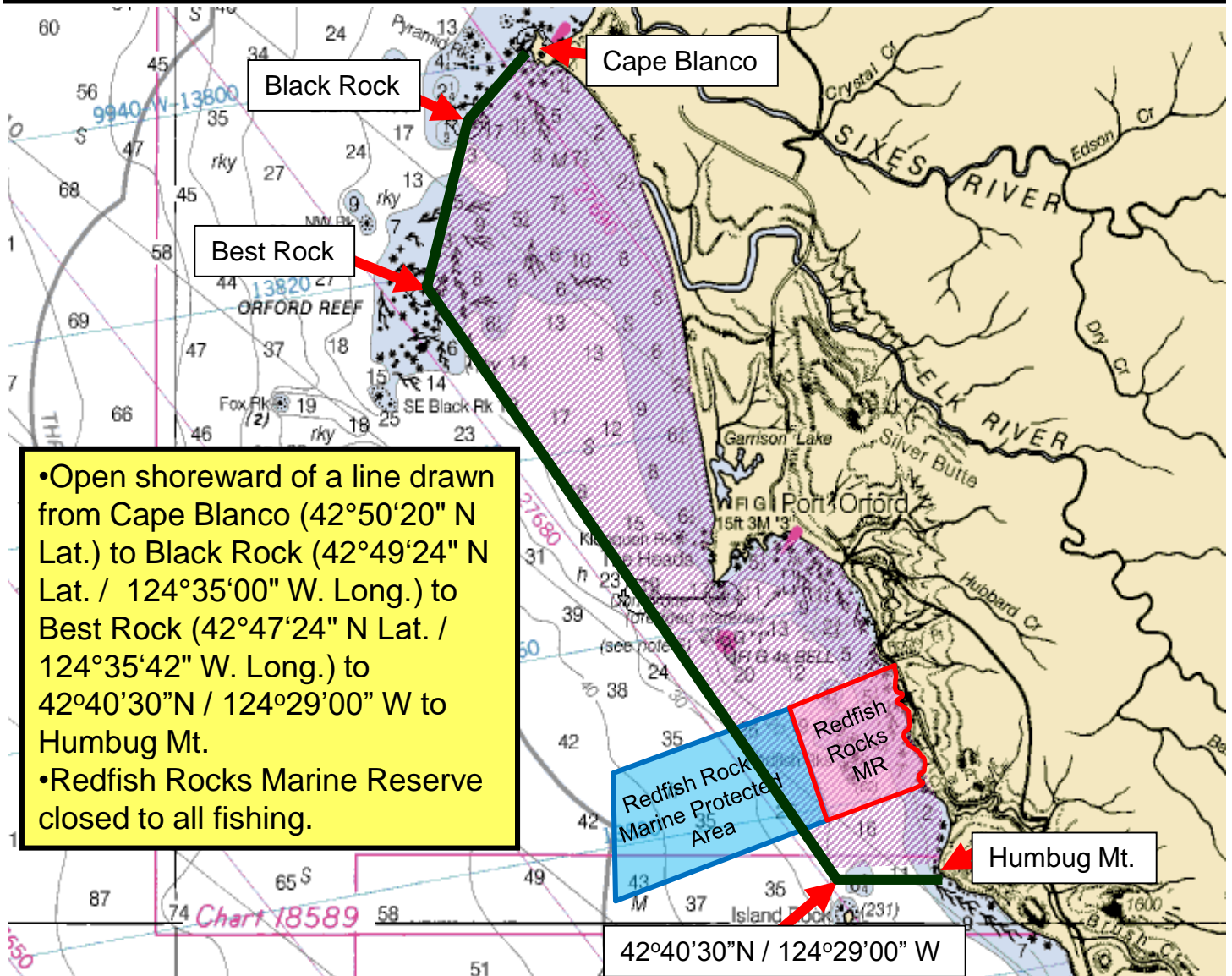


2017 Elk River Fall Chinook State Waters Terminal Area Seasons



- Open shoreward of a line drawn from Cape Blanco (42°50'20" N Lat.) to Black Rock (42°49'24" N Lat. / 124°35'00" W. Long.) to Best Rock (42°47'24" N Lat. / 124°35'42" W. Long.) to 42°40'30"N / 124°29'00" W to Humbug Mt.
- Redfish Rocks Marine Reserve closed to all fishing.

Recreational Season:

- Open November 1-30
- Daily bag limit of 2 Chinook per angler, but no more than 1 non fin-clipped Chinook per day, and no more than 10 non fin-clipped Chinook in seasonal aggregate with the Elk R., Sixes R., New R., and Floras Cr.
- Terminal tackle limited to no more than 2 single point barbless hooks.
- Minimum length: Chinook = 24"

Commercial Troll Season:

- Open October 15-November 30
- Daily landing and possession limit of 20 Chinook per vessel
- No more than 4 spreads per wire
- Single point barbless hooks required
- Minimum length: Chinook = 26"
- Landings restricted to Port Orford