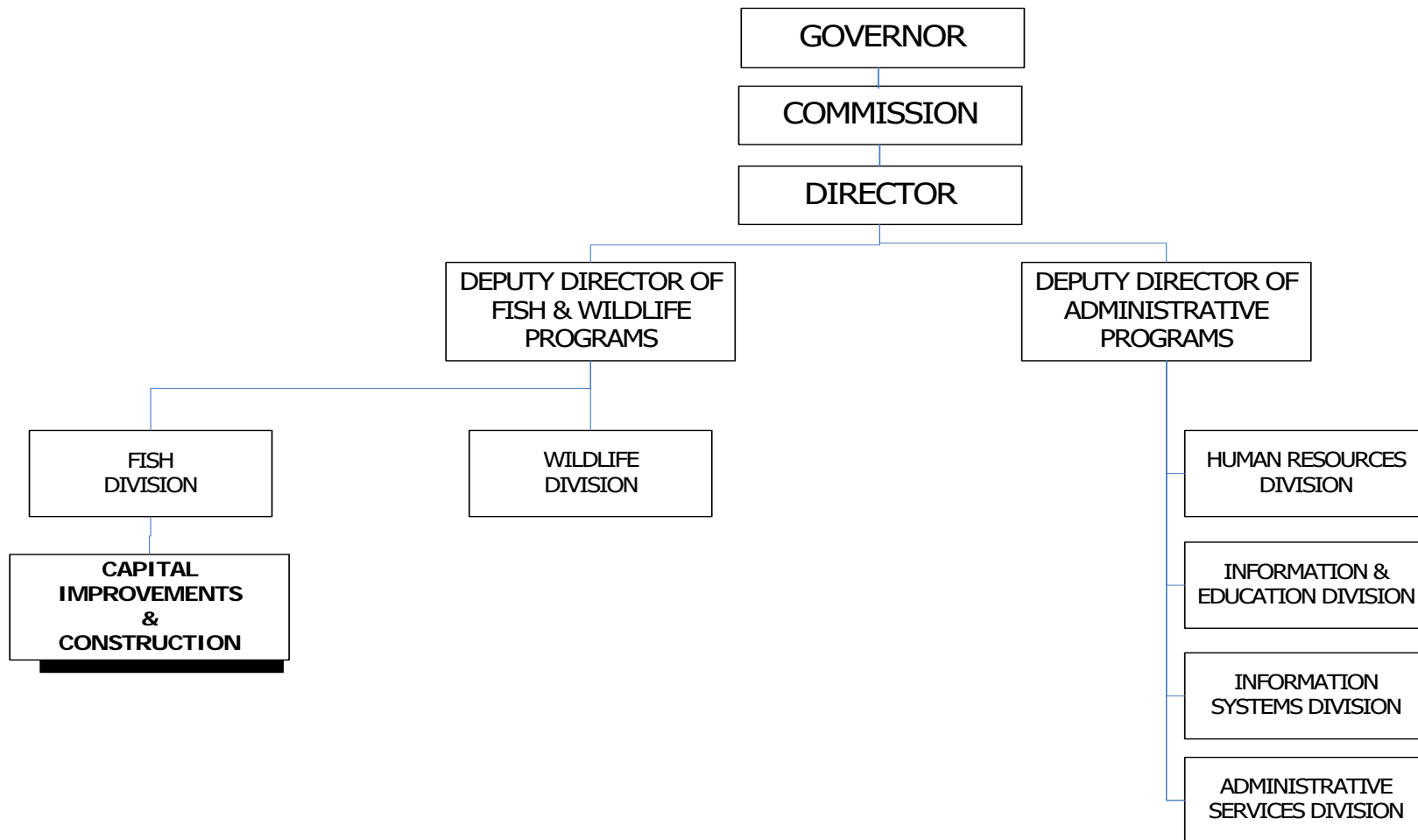


CAPITAL BUDGETING

2017-19 Organization Chart



Positions = 2
FTE = 2

CAPITAL IMPROVEMENT

Primary Outcome Area: Economy & Jobs
Secondary Outcome Area: Healthy Environments
Program Contact: Ed Bowles, 503-947-6206
SCR: 088-00-00-00000

Executive Summary

The Oregon Department of Fish and Wildlife (ODFW) implements capital improvement projects to maintain facilities and support fish restoration and enhancement projects throughout Oregon. ODFW has spent between \$3 million to \$10 million biennially since 2001 on capital improvement projects, with at least 86 percent of the funds spent in local communities on contractors, employees and vendors.

Program Funding Request

ODFW proposes to continue this program at the same level of activity and output. Revenues from the Restoration and Enhancement surcharge are projected to be approximately the same as in the 2015-2017 biennium. There is a proposed Policy Option Package for a roof replacement on the Headquarters building. If approved, current revenues would be used to fund that Policy Option Package. The Capital Improvement program is staffed by 2.0 positions.

Fund Type	15-17	17-19	17-19	17-19
	LAB	Existing Services	Reductions & POPs	LAB
GF	149,975	155,525	(5,556)	149,969
LF	0	0	0	0
OF	6,435,714	5,646,566	498,778	6,145,344
FF	2,983,845	3,094,247	(1,261)	3,092,986
Total	9,569,534	8,896,338	491,961	9,388,299

Program Description

The Capital Improvement Program uses various fund sources to maintain ODFW facilities and to implement fish restoration and improvement projects and other special projects. Projects within the program fall into three major groupings: Fish Restoration and Enhancement (R&E); Emergency Hatchery Maintenance; and other capital projects.

Fish Restoration and Enhancement Program (R&E) is a comprehensive program to restore state-owned hatcheries, enhance natural fish production, expand hatchery production and provide additional public access to fishing waters. The R&E Program funds projects that increase sport fishing opportunities and improve the commercial salmon fishery. The R&E Program was authorized by the Legislature in 1989 and renewed in 2009. Most projects funded by the R&E Program are capital improvement projects including restoration and improvement of state-owned fish hatchery facilities; new and improved public access to fishing waters; fish stocking equipment; and restoration and improvement of fish passage and screen structures.

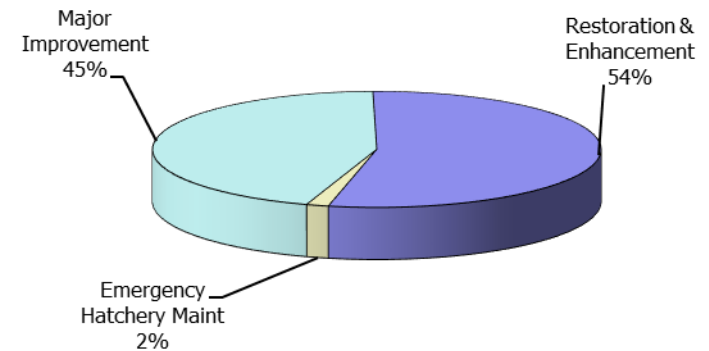
The R&E Program is funded by dedicated recreational fishing license dollars (91 percent) and commercial salmon fishery dollars (9 percent). The program provides funding to public or private non-profit organizations for restoration or enhancement projects consistent with the intent of the R&E Program. The R&E Board reviews and recommends these projects to the Oregon Fish and Wildlife Commission for funding approval. Since its inception, the R&E Program has funded more than \$50 million in projects throughout Oregon, largely through local contractors.

The Capital Improvement Program also includes the **Emergency Hatchery Maintenance** fund for unanticipated maintenance projects such as pump, alarm, and screen failures at ODFW's 32 fish hatcheries. The program also includes major improvement projects costing less than a \$100,000 and typically funded as one-time projects using dedicated or contractually obligated revenues.

Program Justification and Link to Long Term Outcomes

The Capital Improvement Program directly addresses **Strategy 1** in the **Economy and Jobs** 10-Year Plan for Oregon. For example, a significant portion of R&E funding goes toward hatchery maintenance and fish stocking that enhances the ODFW Hatchery Management Program. The Hatchery Management Program generates \$19 to the Oregon economy for every dollar spent (Runyan 2009; per comm., Jenkins 2012). R&E funding used in habitat restoration projects also has a significant impact on Economy and Jobs. According to a study done by Nielsen-Pincus and Moseley (2010), for

**Capital Improvement
Expenditures by Program Area
\$9.39 Million**



every \$1 million invested in forest and watershed restoration about 15.7 to 23.8 jobs are created and results in an additional 1.4 to 2.4 times the amount of economic activity.

R&E also helps landowners meet state fish passage requirements by providing funding for new or improved culverts, fish ladders, and fish screens at water diversion structures. The addition or restoration of these structures provides fish with access to critical spawning and rearing habitat and improves overall fish survival and population success which supports the **secondary outcome area of Healthy Environments**. The Ecosystem Workforce Program Brief (2010) estimated the economic output multiplier of 1.9 to 2.4 for every dollar spent. These projects create economic stimulus in rural and urban communities throughout Oregon, which contributes directly to the **goal of sustainable business development in Strategy 1**.

The Capital Improvement Program addresses priority infrastructure needs for ODFW. However, all project funding is dependent on available funds which directly address **Strategy 2.1** in the 10-Year Plan for Oregon with the R&E Program being the most stable. At the beginning of each year, ODFW's Fish Hatchery Program creates a prioritized list of hatchery maintenance needs, which R&E Board members will refer to when making funding decisions. Currently, the Fish Passage and Screening Program is working with ODFW district managers to identify fish passage priorities statewide. This prioritized list will also provide the R&E Program with a valuable tool in making funding decisions.

Additionally improvements are being made to the R&E application and review process, to ensure that the highest priority capital improvement projects are submitted for R&E funding with a clear benefit to Oregon fisheries. One of the most important goals of the R&E Program is to fund projects that provide a noticeable benefit to anglers and commercial salmon fishers, addressing **Strategy 2.1**. If anglers are satisfied with their fishing experiences, they will continue to buy fishing licenses, and encourage new and old anglers to do the same. Through prioritization and critical review of R&E project proposals, the R&E Program is indirectly creating additional financing for the program through the retention, recruitment and reactivation of the license buying public.

Fishing creates more than 23,600 jobs and generates over \$730 million worth of personal income for businesses that cater to 650,000 anglers in Oregon per year. In addition to contributing to the restoration and enhancement of the state's fisheries through capital improvements, the R&E Program also provides economic benefits to local contractors and businesses that provide supplies and services for R&E approved projects. In the 2015-17 biennium, nearly \$5.6 million in R&E funding was spent directly on fisheries restoration and enhancement projects in Oregon, and the matching contribution total amounted to nearly \$13million, including in-kind contributions. For every license dollar spent an additional \$2.35 was leveraged in matching contributions, and many of those matching contributions included cash contributions benefitting local businesses.

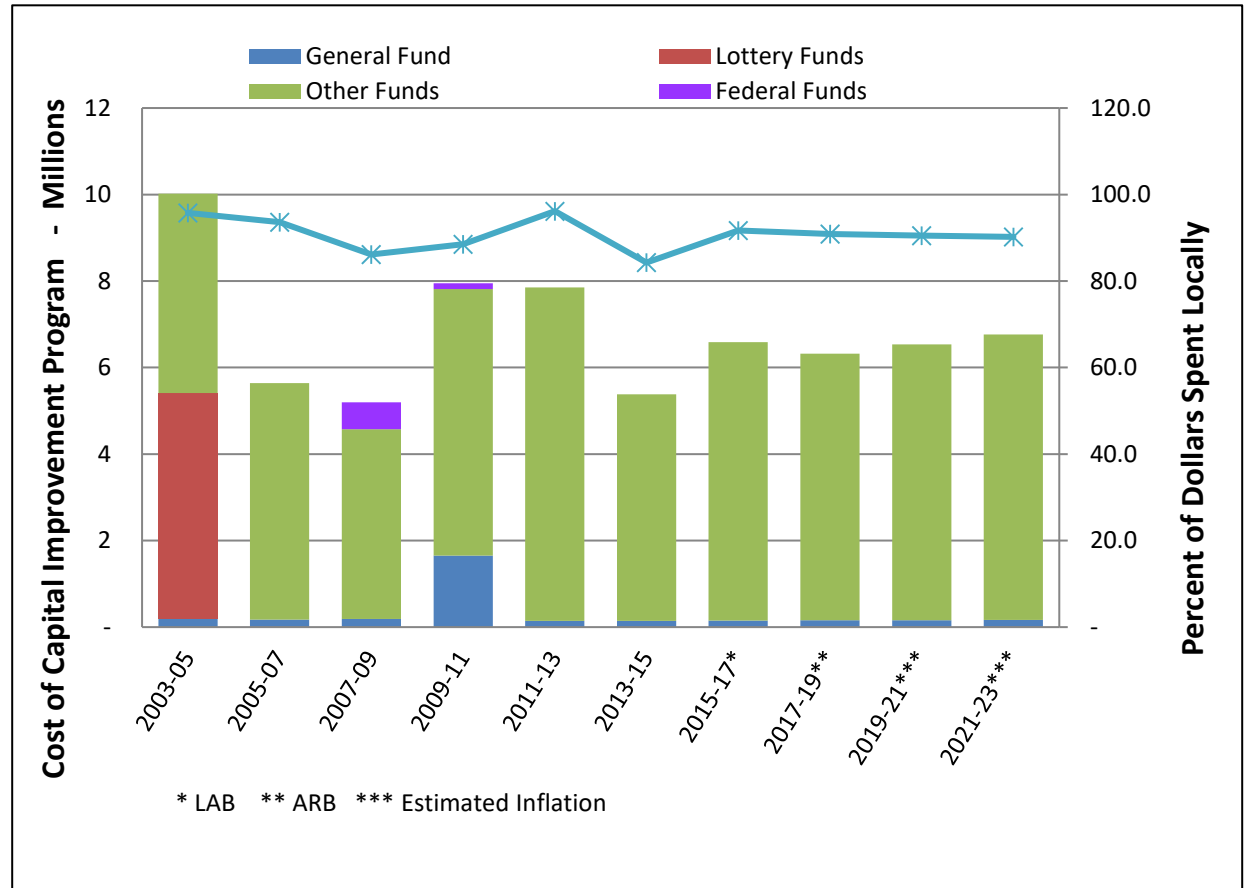
Program Performance

As demonstrated in this graph, ODFW's investment in capital improvements has resulted in at least 86% of those funds being spent in local communities, supporting jobs and local economies while maintaining and enhancing fisheries and infrastructure.

With the vast majority of these funds derived from dedicated funds (R&E license surcharge), this revenue stream and subsequent investments are anticipated to continue into the foreseeable future. The R&E Board solicits projects from ODFW and the general public six times per biennium through a competitive grant process to ensure funds are made available on a predictable basis.

As the primary element of ODFW's Capital Improvements program, the R&E Program has been critical to addressing important maintenance needs at ODFW's fish hatcheries. Because the funds come through a competitive grant process, they are often available to meet emergency or unforeseen needs ODFW would not be able to address through the normal biennial budget process. In the 2015-2017 biennium, the R&E Program provided \$1.6 million or 30 percent of total project funds to 10 hatchery maintenance and improvement projects. These funds have been essential to on-going operations and ensuring hatchery production goals are met.

The R&E Program also contributes to capital improvements for Oregon's recreational and commercial fisheries by funding fish passage and screening projects, ensuring fish are able to migrate safely. In the 2015-17 biennium \$952,935 (17 percent of total funds) were spent on 11 fish passage and screening projects. These funds often serve as match for complex passage and screening packages. R&E also funds projects that improve fishing access (\$510,771 or 9% of funds was spent on 9 projects in 2015-17 biennium), enhancing opportunities for the public to fish.



Enabling Legislation/Program Authorization

The Oregon Fisheries Restoration and Enhancement Program is established and governed by Oregon Revised Statutes: 496.283, 496.286, 496.289, 496.291, 508.285 and 508.505; and Oregon Administrative Rules: 635-009-200, 635-009-205, 635-009-210, 635-009-215, 635-009-220, 635-009-225, 635-009-230, 635-009-235, and 635-009-240.

Funding Streams

Funding for the R&E program is from a dedicated \$4 surcharge on all sport fishing licenses, a \$74 commercial gillnetting permit fee, and a \$64 troll fishing permit fee. A fee of \$0.04 per pound on all commercial salmon troll and gillnet landings is also dedicated to the R&E Program. The Hatchery Emergency Maintenance Fund is a General Fund appropriation. Other capital projects are discrete projects dependent on need, funding, and limitation.

Significant Proposed Program Changes from 2015-17

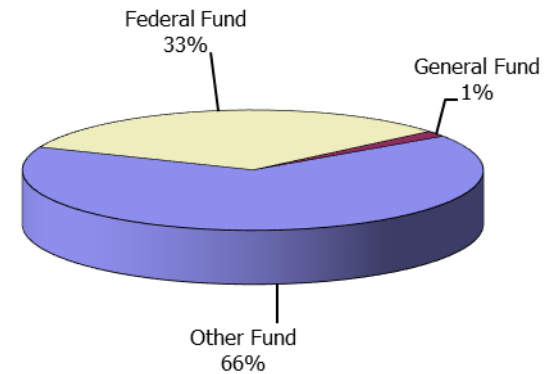
The 2015-17 biennium was the first biennium under the six year fee adjustment that was effective January 2016. This fee package was developed to provide modest increases in each biennium over the next six years. This new approach allows for continued funding of the agency without a large increase for the customer in the first biennium.

The agency is also proposing to use a portion of the available grant funds from the USFWS Pittman Robertson to address maintenance needs at wildlife areas.

Proposed New Laws

None.

**Capital Improvement
Revenues by Fund Type
\$9.47 Million**



Essential Packages

The Essential Packages represent changes made to the 2015-17 budget that estimate the cost to continue current legislatively approved programs into the 2017-19 biennium.

010 Vacancy Factor and Non-PICS Personal Services

- Vacancy Factor (attrition) reduces the PICS generated personal services budget for the current positions. The adjustment represents the projected savings from staff turnover. This package contains only the change from the prior approved budget.
- Non-PICS items include temporary, overtime, shift differentials, unemployment assessment, and mass transit taxes (rate 0.006). This package reflects the inflation increase for these items.
- PERS Bond Assessment represents the amount budgeted for the 2017-19 budget in accordance with Department of Administrative Services' instructions.

021/

022 Cost of Phase-in and Phase-out Programs and One-time Costs

- Includes Phase-outs for Personal Services and Services and Supplies approved on a one-time basis in Package 801.

031 Inflation/Price List Increases

- Inflation increase: 3.7 percent is the established general inflation factor for 2017-19 and has been applied to most Services and Supplies, Capital Outlay and Special Payments expenditures. 4.1 percent is applied to Professional Services. This also includes changes in State Government Service Charges, per the DAS Price List.

032 Above Standard Inflation/Price List Increases

- None

033 Exceptional Inflation/Price List Increases

- None

050 Fund Shifts

- None

060 Technical Adjustments

- None

070 Revenue Reductions

- None

Agency Name:

Department of Fish and Wildlife

Policy Option Package Initiative:

146 – Headquarters Roof Replacement

Policy Option Package Element Addendum:

PURPOSE

DESCRIPTION OF PROBLEM OR ISSUE:

The Oregon Department of Fish and Wildlife's (ODFW) Headquarters roof requires a complete replacement. The roof was installed when the building was originally constructed in 1999. Although greater longevity was expected when ODFW purchased the building in 2012, tests of the condition of the current roofing materials have revealed that the layers of the roof were not properly adhered together when it was built. Because of this and the type of roof installed, the roof has reached the end of its useful life. Regular maintenance and some larger remediation projects have been performed, most recently roof patching and sealing in early 2016, to attempt to prolong the roof's life. In February 2016 ODFW hired a roofing consultant to perform a full assessment of the condition of the roof. Due to the age of the roof and level of deterioration of its materials, the consultant confirmed that the roof is at a failure point. The consultant's findings stated that continuing to defer the replacement of the roof is not a viable option. Consequences of deferring the work would result in more rotted wood, thereby increasing the need for replacement of the existing roof deck boards. This would make it more expensive for ODFW in the long-term due to the need for a larger volume of materials. Other deferred replacement costs include anticipated leak clean-up costs, lost productivity of the employees affected by the leaks, and staff time to coordinate and manage the clean-up and repair efforts. Due to the severity of leaks over the past year, ODFW also has safety concerns. A sizeable leak in the Department's Wildlife Division in December 2015 forced the relocation of two individuals and resulted in a damaged facility and the need to devote several thousands of dollars to clean-up and construction costs. The ODFW Headquarters building needs a new roof to ensure that the staff located within its Headquarters facility has a place to work to continue to be successful in the management of Oregon's natural resources.

HOW ACHIEVED

PROPOSED SOLUTION TO THE PROBLEM OR ISSUE:

This policy option package request is to replace the existing roofing system on ODFW's Headquarters building with a new structure that meets current industry standards and building code requirements. Due to the severity of need for this roof replacement, this maintenance project is being forwarded in this Other Fund policy option package proposal. However, if the Deferred Maintenance Policy Option Package 136 is approved, this project would be prioritized in the list of projects to be accomplished through that mechanism and Policy Option Package 146 would not be needed.

HOW THIS FURTHERS THE AGENCY MISSION OR GOALS:

ODFW's mission is "to protect and enhance Oregon's fish and wildlife and their habitats for use and enjoyment by present and future generations." Restoring the facility integrity of this asset and allowing staff a consistent and stable place to work is key to ODFW's responsibility to manage natural resources for use and enjoyment of the general public of Oregon.

PERFORMANCE MEASURES TO QUANTIFY THE SUCCESS OF THE PROPOSAL:

This package supports several Key Performance Measures (KPMs) for the agency. Many of the key program staff-members devoted directly to activities addressed in KPMs are located within ODFW's Headquarters facility and implementation of this package will allow staff to continue to perform these activities. This package will contribute to KPM 1 (Percent of the license buying population with hunting licenses and/or tags) and KPM 2 (Percent of the license buying population with angling licenses and/or tags) because licenses are sold out of the Headquarters building and the Licensing Division is housed in the Headquarters building. This package will contribute to KPM 3 (Number of wildlife damage complaints addressed annually) and KPM 5 (Percent of wildlife species of concern being monitored) because the Wildlife Division is housed in the Headquarters Building, which includes the Wildlife Management Section, which monitors the number of wildlife damage complaints that are reported across the state, and the Wildlife Conservation Program, which manages the monitoring activities of wildlife species of concern across the state. This package will also contribute to KPM 4 (Percent of fish species of concern being monitored) and KPM 6 (Decreasing the Number of Unscreened Water Diversions) because the Fish Division is housed in the Headquarters building, which includes the Conservation and Recovery Program, which manages the monitoring of fish species of concern across the state, and the Fish Passage and Screening Program, which facilitates the screening of water diversions across the state.

STATUTORY REFERENCE:

The agency is authorized to conduct fish and wildlife management activities under ORS Chapters 496-498 and ORS Chapters 503-513.

ALTERNATIVES CONSIDERED AND REASONS FOR REJECTION:

Repair alternatives were considered before ODFW decided on the need for a roof replacement. They were qualitatively and quantitatively evaluated to see if it was feasible to repair the roof, without investing in a complete replacement. Repairing the roof was rejected because it was determined to be an ineffective alternative for addressing the major water infiltration issues. The roof has deteriorated beyond a point where patching would be expected to prevent all of the leaks for a similar roof of this age.

IMPACT OF NOT FUNDING:

If this package is not funded, the roof will continue to deteriorate and the ability of the agency to meet resource goals will be severely hampered. ODFW will also incur increased costs in responding to leaks. Additionally, business operations will become interrupted if the roof continues to degrade and water enters the interior of the building.

EQUIPMENT TO BE PURCHASED (IF APPLICABLE):

None.

STAFFING IMPACT

None.

QUANTIFYING RESULTS

The project will be monitored by staff from ODFW's Administrative Services Division and Engineering Section during construction to ensure full execution of the work to replace the roof. The successful execution of this package is expected to improve the agency's ability to protect Oregon's fish and wildlife resources.

REVENUE SOURCE

\$520,000 Other Funds – Obligated (DEQ Rent)

Department of Fish and Wildlife

Policy Package 810 Statewide Adjustments – (HB5006)

PURPOSE

Statewide adjustments reflect budget changes in multiple agencies based on reductions in Department of Administrative Services assessments and charges for services, Attorney General rates, certain services and supplies, and additional vacancy savings expected as a result of a hiring slowdown. Statewide adjustments also reflect net reductions to debt service realized through interest rate savings on bond sales and refunding of outstanding general obligation and lottery revenue bonds. Total statewide savings are \$135.8 million General Fund, \$16.7 million Lottery Funds, \$105.5 million Other Funds, and \$35.6 million Federal Funds.

HOW ACHIEVED

The Oregon Department of Fish and Wildlife reflected the above adjustments in the Fish Division, Wildlife Division, Administration, and Capital Improvements.

QUANTIFYING RESULTS

None

STAFFING IMPACT

None

REVENUE SOURCE (088-00)

<\$5,556> - General Funds

<\$21,222> - Other Funds (Miscellaneous Non License Other Funds – in BASE Budget)

<\$1,261> - Federal Funds (Pittman Robinson (\$1,261))

ESSENTIAL AND POLICY PACKAGE FISCAL IMPACT SUMMARY

Fish & Wildlife, Oregon Dept of
Pkg: 010 - Non-PICS Psnl Svc / Vacancy Factor

Cross Reference Name: Capital Improvements
Cross Reference Number: 63500-088-00-00-00000

<i>Description</i>	General Fund	Lottery Funds	Other Funds	Federal Funds	Nonlimited Other Funds	Nonlimited Federal Funds	All Funds
Personal Services							
Temporary Appointments	-	-	-	-	-	-	-
Overtime Payments	-	-	-	-	-	-	-
Shift Differential	-	-	-	-	-	-	-
All Other Differential	-	-	-	-	-	-	-
Pension Obligation Bond	-	-	1,327	-	-	-	1,327
Mass Transit Tax	-	-	156	-	-	-	156
Total Personal Services	-	-	\$1,483	-	-	-	\$1,483
Capital Outlay							
Other Capital Outlay	-	-	-	-	-	-	-
Total Capital Outlay	-	-	-	-	-	-	-
Total Expenditures							
Total Expenditures	-	-	1,483	-	-	-	1,483
Total Expenditures	-	-	\$1,483	-	-	-	\$1,483
Ending Balance							
Ending Balance	-	-	(1,483)	-	-	-	(1,483)
Total Ending Balance	-	-	(\$1,483)	-	-	-	(\$1,483)

ESSENTIAL AND POLICY PACKAGE FISCAL IMPACT SUMMARY

Fish & Wildlife, Oregon Dept of
Pkg: 022 - Phase-out Pgm & One-time Costs

Cross Reference Name: Capital Improvements
Cross Reference Number: 63500-088-00-00-00000

<i>Description</i>	General Fund	Lottery Funds	Other Funds	Federal Funds	Nonlimited Other Funds	Nonlimited Federal Funds	All Funds
Capital Outlay							
Other Capital Outlay	-	-	(1,000,000)	-	-	-	(1,000,000)
Total Capital Outlay	-	-	(\$1,000,000)	-	-	-	(\$1,000,000)
Total Expenditures							
Total Expenditures	-	-	(1,000,000)	-	-	-	(1,000,000)
Total Expenditures	-	-	(\$1,000,000)	-	-	-	(\$1,000,000)
Ending Balance							
Ending Balance	-	-	1,000,000	-	-	-	1,000,000
Total Ending Balance	-	-	\$1,000,000	-	-	-	\$1,000,000

ESSENTIAL AND POLICY PACKAGE FISCAL IMPACT SUMMARY

**Fish & Wildlife, Oregon Dept of
Pkg: 031 - Standard Inflation**

**Cross Reference Name: Capital Improvements
Cross Reference Number: 63500-088-00-00-00000**

<i>Description</i>	General Fund	Lottery Funds	Other Funds	Federal Funds	Nonlimited Other Funds	Nonlimited Federal Funds	All Funds
Revenues							
General Fund Appropriation	5,550	-	-	-	-	-	5,550
Federal Funds	-	-	-	110,402	-	-	110,402
Total Revenues	\$5,550	-	-	\$110,402	-	-	\$115,952
Services & Supplies							
Instate Travel	2	-	4,104	-	-	-	4,106
Employee Training	-	-	446	-	-	-	446
Office Expenses	-	-	1,093	-	-	-	1,093
Telecommunications	-	-	917	-	-	-	917
Publicity and Publications	9	-	1,202	-	-	-	1,211
Professional Services	-	-	2,546	-	-	-	2,546
Employee Recruitment and Develop	-	-	43	-	-	-	43
Dues and Subscriptions	-	-	220	-	-	-	220
Facilities Rental and Taxes	-	-	-	-	-	-	-
Fuels and Utilities	-	-	2,738	-	-	-	2,738
Facilities Maintenance	4,403	-	5,163	-	-	-	9,566
Agency Program Related S and S	-	-	64,678	-	-	-	64,678
Intra-agency Charges	-	-	-	-	-	-	-
Other Services and Supplies	1,136	-	17,830	42,086	-	-	61,052
Expendable Prop 250 - 5000	-	-	906	-	-	-	906
IT Expendable Property	-	-	503	-	-	-	503
Total Services & Supplies	\$5,550	-	\$102,389	\$42,086	-	-	\$150,025

ESSENTIAL AND POLICY PACKAGE FISCAL IMPACT SUMMARY

Fish & Wildlife, Oregon Dept of
Pkg: 031 - Standard Inflation

Cross Reference Name: Capital Improvements
Cross Reference Number: 63500-088-00-00-00000

<i>Description</i>	General Fund	Lottery Funds	Other Funds	Federal Funds	Nonlimited Other Funds	Nonlimited Federal Funds	All Funds
Capital Outlay							
Technical Equipment	-	-	1,887	-	-	-	1,887
Industrial and Heavy Equipment	-	-	-	-	-	-	-
Data Processing Hardware	-	-	-	-	-	-	-
Land and Improvements	-	-	-	19,055	-	-	19,055
Building Structures	-	-	71,985	-	-	-	71,985
Other Capital Outlay	-	-	11,635	25,900	-	-	37,535
Total Capital Outlay	-	-	\$85,507	\$44,955	-	-	\$130,462
Special Payments							
Dist to Other Gov Unit	-	-	-	23,361	-	-	23,361
Dist to Individuals	-	-	-	-	-	-	-
Total Special Payments	-	-	-	\$23,361	-	-	\$23,361
Total Expenditures							
Total Expenditures	5,550	-	187,896	110,402	-	-	303,848
Total Expenditures	\$5,550	-	\$187,896	\$110,402	-	-	\$303,848
Ending Balance							
Ending Balance	-	-	(187,896)	-	-	-	(187,896)
Total Ending Balance	-	-	(\$187,896)	-	-	-	(\$187,896)

ESSENTIAL AND POLICY PACKAGE FISCAL IMPACT SUMMARY

Fish & Wildlife, Oregon Dept of
Pkg: 090 - Analyst Adjustments

Cross Reference Name: Capital Improvements
Cross Reference Number: 63500-088-00-00-00000

<i>Description</i>	General Fund	Lottery Funds	Other Funds	Federal Funds	Nonlimited Other Funds	Nonlimited Federal Funds	All Funds
Revenues							
General Fund Appropriation	-	-	-	-	-	-	-
Total Revenues	-	-	-	-	-	-	-
Services & Supplies							
Facilities Maintenance	-	-	-	-	-	-	-
Total Services & Supplies	-	-	-	-	-	-	-
Total Expenditures							
Total Expenditures	-	-	-	-	-	-	-
Total Expenditures	-	-	-	-	-	-	-
Ending Balance							
Ending Balance	-	-	-	-	-	-	-
Total Ending Balance	-	-	-	-	-	-	-

ESSENTIAL AND POLICY PACKAGE FISCAL IMPACT SUMMARY

Fish & Wildlife, Oregon Dept of
Pkg: 146 - Headquarters Roof Replacement

Cross Reference Name: Capital Improvements
Cross Reference Number: 63500-088-00-00-00000

<i>Description</i>	General Fund	Lottery Funds	Other Funds	Federal Funds	Nonlimited Other Funds	Nonlimited Federal Funds	All Funds
Revenues							
Transfer In - Intrafund	-	-	-	-	-	-	-
Total Revenues	-	-	-	-	-	-	-
Capital Outlay							
Building Structures	-	-	520,000	-	-	-	520,000
Total Capital Outlay	-	-	\$520,000	-	-	-	\$520,000
Total Expenditures							
Total Expenditures	-	-	520,000	-	-	-	520,000
Total Expenditures	-	-	\$520,000	-	-	-	\$520,000
Ending Balance							
Ending Balance	-	-	(520,000)	-	-	-	(520,000)
Total Ending Balance	-	-	(\$520,000)	-	-	-	(\$520,000)

ESSENTIAL AND POLICY PACKAGE FISCAL IMPACT SUMMARY

**Fish & Wildlife, Oregon Dept of
Pkg: 810 - Statewide Adjustments**

**Cross Reference Name: Capital Improvements
Cross Reference Number: 63500-088-00-00-00000**

<i>Description</i>	General Fund	Lottery Funds	Other Funds	Federal Funds	Nonlimited Other Funds	Nonlimited Federal Funds	All Funds
Revenues							
General Fund Appropriation	(5,556)	-	-	-	-	-	(5,556)
Federal Funds	-	-	-	(1,261)	-	-	(1,261)
Total Revenues	(\$5,556)	-	-	(\$1,261)	-	-	(\$6,817)
Personal Services							
Vacancy Savings	-	-	(9,718)	-	-	-	(9,718)
Total Personal Services	-	-	(\$9,718)	-	-	-	(\$9,718)
Services & Supplies							
Instate Travel	(8)	-	(12,691)	-	-	-	(12,699)
Out of State Travel	-	-	-	-	-	-	-
Telecommunications	-	-	(74)	-	-	-	(74)
Publicity and Publications	(9)	-	-	-	-	-	(9)
Facilities Maintenance	(4,403)	-	-	-	-	-	(4,403)
Other Services and Supplies	(1,136)	-	1,261	(1,261)	-	-	(1,136)
Total Services & Supplies	(\$5,556)	-	(\$11,504)	(\$1,261)	-	-	(\$18,321)
Total Expenditures							
Total Expenditures	(5,556)	-	(21,222)	(1,261)	-	-	(28,039)
Total Expenditures	(\$5,556)	-	(\$21,222)	(\$1,261)	-	-	(\$28,039)

ESSENTIAL AND POLICY PACKAGE FISCAL IMPACT SUMMARY

**Fish & Wildlife, Oregon Dept of
Pkg: 810 - Statewide Adjustments**

**Cross Reference Name: Capital Improvements
Cross Reference Number: 63500-088-00-00-00000**

<i>Description</i>	General Fund	Lottery Funds	Other Funds	Federal Funds	Nonlimited Other Funds	Nonlimited Federal Funds	All Funds
Ending Balance							
Ending Balance	-	-	21,222	-	-	-	21,222
Total Ending Balance	-	-	\$21,222	-	-	-	\$21,222

Detail of Lottery, Other Funds and Federal Fund Revenues								
Source	Fund	ORBITS Revenue Accounts	2013-15 Actuals	2015-17 Legislatively Approved	2015-17 Estimated	2017-19		
						Agency Request	Governor's Recommended	Legislatively Adopted
Beginning Balance	L	0025	-	-	-	-	-	-
Transfer in - Intrafund	L	1010	-	-	-	-	-	-
Transfer in - Lottery Proceeds	L	1040	-	-	-	-	-	-
Transfer in - OR Watershed Enhancement Bd	L	1691	-	-	-	-	-	-
Transfer Out - Intrafund	L	2010	-	-	-	-	-	-
TOTAL LOTTERY FUNDS	0		-	-	-	-	-	-
Beginning Balance	O	0025	3,903,964	2,743,364	2,743,364	1,287,366	1,287,366	1,287,366
Non-Business Licenses & Fees	O	0210	-	-	-	-	-	-
Hunter & Angler Licenses	O	0230						
Non Dedicated			-	-	-	-	-	-
Dedicated			4,418,536	4,363,000	4,363,000	4,540,000	4,540,000	4,540,000
Fee Increase – Non Dedicated			-	-	-	-	-	-
Fee Increase – Dedicated			-	(64,000)	(64,000)	(120,000)	(120,000)	(120,000)
subtotal Hunter & Angler Licenses			4,418,536	4,299,000	4,299,000	4,420,000	4,420,000	4,420,000
Commercial Fisheries Fund	O	0235	-	430,000	430,000	-	-	-
Park User Fees	O	0255	-	-	-	-	-	-
Charges for Services	O	0410	-	-	-	-	-	-
Fines and Forfeitures	O	0505	-	-	-	-	-	-
Rents & Royalties	O	0510	-	-	-	-	-	-
General Fund Obligation Bonds	O	0555	-	-	-	-	-	-
Interest Income	O	0605	16,698	16,200	16,200	-	-	-
Sales Income	O	0705	-	-	-	-	-	-
Donations	O	0905	-	-	-	-	-	-
Grants (Non-Fed)	O	0910	398,533	-	-	-	-	-
Other Revenues	O	0975	377,709	-	-	-	-	-
Transfer in - Intrafund	O	1010	57,255	400,234	400,234	520,000	520,000	520,000
Transfers in from Federal Indirect Revenue	O	1020	-	-	-	-	-	-
Transfer in - Oregon Department of Revenue	O	1150	-	-	-	-	-	-
Transfer in - Oregon Military Dept	O	1248	-	-	-	-	-	-
Transfer in - Marine Board	O	1250	-	-	-	-	-	-
Transfer in - Department of Energy	O	1330	-	-	-	-	-	-
Transfer in - Water Resources Department	O	1690	-	-	-	-	-	-
Transfer in - Watershed Enhancement Board	O	1691	-	-	-	-	-	-
Transfer out - Department of Transportation	O	1730	-	-	-	-	-	-
Transfer out - Intrafund	O	2010	-	-	-	-	-	-
Transfer out - Dept. of Administrative Services	O	2107	-	-	-	-	-	-
Transfer out - Department of State Police	O	2257	-	-	-	-	-	-
Transfer out - Department of Agriculture	O	2603	-	-	-	-	-	-
TOTAL OTHER FUND			9,172,695	7,888,798	7,888,798	6,227,366	6,227,366	6,227,366

Detail of Lottery, Other Funds and Federal Fund Revenues								
Source	Fund	ORBITS Revenue Accounts	2013-15 Actuals	2015-17 Legislatively Approved	2015-17 Estimated	2017-19		
						Agency Request	Governor's Recommended	Legislatively Adopted
Beginning Balance	F	0025	-	-	-	-	-	-
Federal Revenues	F	0995	335,930	2,983,845	2,983,845	3,094,247	3,094,247	3,092,986
Transfer in - Intrafund	F	1010	-	-	-	-	-	-
Transfer in - Marine Board	F	1250	-	-	-	-	-	-
Transfer out - Intrafund	F	2010	(4,731)	-	-	-	-	-
Transfer out - Federal Indirect	F	2020	-	-	-	-	-	-
TOTAL FEDERAL FUNDS			331,199	2,983,845	2,983,845	3,094,247	3,094,247	3,092,986

DETAIL OF LOTTERY FUNDS, OTHER FUNDS, AND FEDERAL FUNDS REVENUE

Fish & Wildlife, Oregon Dept of
2017-19 Biennium

Agency Number: 63500
Cross Reference Number: 63500-088-00-00-00000

<i>Source</i>	2013-15 Actuals	2015-17 Leg Adopted Budget	2015-17 Leg Approved Budget	2017-19 Agency Request Budget	2017-19 Governor's Budget	2017-19 Leg Adopted Budget
Other Funds						
Hunter and Angler Licenses	4,418,536	4,299,000	4,299,000	4,420,000	4,420,000	4,420,000
Commercial Fish Lic and Fees	-	430,000	430,000	-	-	-
Interest Income	16,698	16,200	16,200	-	-	-
Grants (Non-Fed)	398,533	-	-	-	-	-
Other Revenues	377,709	-	-	-	-	-
Transfer In - Intrafund	57,255	400,234	400,234	520,000	520,000	520,000
Total Other Funds	\$5,268,731	\$5,145,434	\$5,145,434	\$4,940,000	\$4,940,000	\$4,940,000
Federal Funds						
Federal Funds	335,930	2,983,845	2,983,845	3,094,247	3,094,247	3,092,986
Transfer Out - Intrafund	(4,731)	-	-	-	-	-
Total Federal Funds	\$331,199	\$2,983,845	\$2,983,845	\$3,094,247	\$3,094,247	\$3,092,986

MAJOR CONSTRUCTION/ACQUISITION

SCR: 089-00-00-00000

Program and Activities

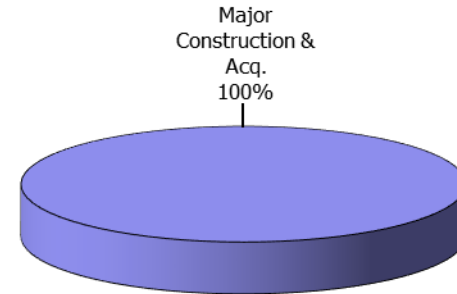
ODFW does not currently have a major construction or acquisition program that is continuous from biennium to biennium. Funding is project specific. Occasionally, federal agencies will support a project that meets their goals and objectives. State projects may be funded with General Fund or Other Funds using Certificates of Participation or donations. ODFW developed a six-year plan and a listing of projects, and continues to search for ways to fund these projects.

Revenue Sources and Proposed Revenue Changes

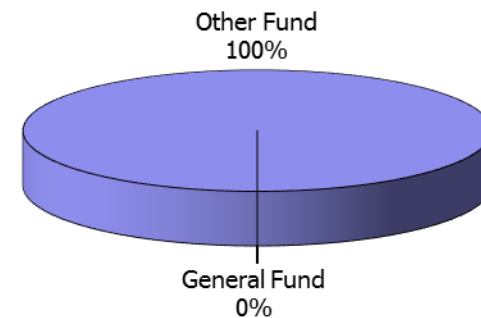
Specific packages in 2017-19 include:

- ODFW Deferred Maintenance Package: This funding package will allocate money to provide maintenance or replacement of select facilities at ODFW hatcheries. These hatcheries are directly tied to the management of recreational fishing for the public.

Capital Construction Expenditures \$10.0 Million



Capital Construction Revenues by Fund Type \$10.0 Million



Major Construction/Acquisition Project Narrative

Project Title: Building and Land Purchases		Land Use/Zoning Requirements Satisfied			Estimated Completion Date: June 30, 2017
Project Address/Location: Marine Resources Office Building, Newport	<input checked="" type="checkbox"/> New	Yes	X	No	Priority: 2
	<input type="checkbox"/> Addition <input type="checkbox"/> Remodel Repair	Comments:		Comments:	No. of Floors/Square Footage: 2 / 10,000 sqft

-
- The purpose of this project is to construct a new office building for the Marine Resources Program. The current building has significant structural issues that indicate the structure will not perform well in the event of an earthquake. Additionally the building is constructed over soil that is susceptible to liquefaction and is located in the tsunami inundation zone. The new office building will be sited in a location with proper foundation soils and out of the tsunami inundation zone. Also the Marine Resources Program staff are spread across three individual buildings, some of which are leased. This office will consolidate staff into one office and eliminate leasing costs to the program. ODFW is intending to fund this project through a General Fund request to the legislature.

	Provision for Future Expansion: NA	Structural Framing: NA	Flooring: NA
		Exterior Walls: NA	Heating/Cooling: NA
	Provisions for Use Change: NA	Interior Finish: NA	Special Equipment: NA
		Windows: NA	Usable Unenclosed Areas: NA

Project Title: Building and Land Purchases		Land Use/Zoning Requirements Satisfied			Estimated Completion Date: June 30, 2017
Project Address/Location: Various Hatchery Improvements Several Locations	X New	Yes	X	No	Priority: 2
	<input type="checkbox"/> Addition <input type="checkbox"/> Remodel	Comments:		Comments:	No. of Floors/Square Footage: NA

The purpose of this project is to address numerous maintenance needs at various hatcheries. This project portfolio contains the following actions: new fish trap and intake screens at Cedar Creek hatchery, replacement hatchery buildings at Alsea & Trask hatcheries, residence replacements at Rock Creek, Sandy, and Elk River hatcheries, removal of underground storage tanks statewide, raceways repairs/replacements at Nehalem, Wallowa and Klamath hatcheries, water treatment systems at Wallowa hatchery, intake water pump improvements at Elk River & Salmon River hatcheries, safety improvements statewide, and a water line replacement at Oak Springs hatchery. ODFW is intending to fund these projects primarily through a General Fund request to the legislature.

	Provision for Future Expansion: NA	Structural Framing: NA	Flooring: NA
		Exterior Walls: NA	Heating/Cooling: NA
	Provisions for Use Change: NA	Interior Finish: NA	Special Equipment: NA
		Windows: NA	Usable Unenclosed Areas: NA

Major Construction/Acquisition Six-Year Plan

Program Area/Agency	2015-2021				
	<u>General Fund</u>	<u>Other Funds</u>	<u>Lottery Funds</u>	<u>Federal Funds</u>	<u>Total Funds</u>
2017-2019 – Hatchery Deferred Maintenance Package	10,000,000				10,000,000
2019-2021 – No projects identified at this time					
2021-2023 – No project identified at this time					

Capital Financing Six-Year Forecast Summary 2017-19

AGENCY: Department of Fish and Wildlife
 Agency #: 63500

Provide amounts in the table below, by expected use and repayment source, of agency financing needs for the 2015-17 biennium. Include proposed project amounts only (do not include debt service either from previously issued debt or from new issue).

Use of Bond Proceeds	Bond Type		Totals by Repayment Source
	General Obligation Bonds	Revenue Bonds	
Major Construction/ Acquisition Projects			
Subtotal for General Fund Repayment:	\$ 10,000,000	\$	\$ GF
Subtotal for Lottery Funds Repayment:	\$	\$	\$ LF
Subtotal for Other Funds Repayment:	\$	\$	\$ OF
Subtotal for Federal Funds Repayment:	\$	\$	\$ FF
Total for Major Construction	\$ 10,000,000	\$ 0	\$
Equipment/Technology Projects over \$500,000			
Subtotal for General Fund Repayment:	\$	\$	\$ GF
Subtotal for Lottery Funds Repayment:	\$	\$	\$ LF
Subtotal for Other Funds Repayment:	\$	\$	\$ OF
Subtotal for Federal Funds Repayment:	\$	\$	\$ FF
Total for Equipment/Technology	\$ 0	\$ 0	\$
Debt Issuance for Loans and Grants			
Subtotal for General Fund Repayment:	\$	\$	\$ GF
Subtotal for Lottery Funds Repayment:	\$	\$	\$ LF
Subtotal for Other Funds Repayment:	\$	\$	\$ OF
Subtotal for Federal Funds Repayment:	\$	\$	\$ FF
Total for Loans and Grants:	\$ 0	\$ 0	\$
Total All Debt Issuance			
Subtotal for General Fund Repayment:	\$	\$	\$ GF
Subtotal for Lottery Funds Repayment:	\$	\$	\$ LF
Subtotal for Other Funds Repayment:	\$	\$	\$ OF
Subtotal for Federal Funds Repayment:	\$	\$	\$ FF
GRAND TOTAL 2015-17	\$ 10,000,000	\$ - 0 -	\$ - 0 -

Capital Financing Six-Year Forecast Summary 2019-21

AGENCY: Department of Fish and Wildlife
 Agency #: 63500

Provide amounts in the table below, by expected use and repayment source, of agency financing needs for the 2017-19 biennium. Include proposed project amounts only (do not include debt service either from previously issued debt or from new issue).

Use of Bond Proceeds	Bond Type		Totals by Repayment Source
	General Obligation Bonds	Revenue Bonds	
Major Construction/ Acquisition Projects			
Subtotal for General Fund Repayment:	\$	\$	GF
Subtotal for Lottery Funds Repayment:	\$	\$	LF
Subtotal for Other Funds Repayment:	\$	\$	OF
Subtotal for Federal Funds Repayment:	\$	\$	FF
Total for Major Construction	\$ 0	\$ 0	
Equipment/Technology Projects over \$500,000			
Subtotal for General Fund Repayment:	\$	\$	GF
Subtotal for Lottery Funds Repayment:	\$	\$	LF
Subtotal for Other Funds Repayment:	\$	\$	OF
Subtotal for Federal Funds Repayment:	\$	\$	FF
Total for Equipment/Technology	\$ 0	\$ 0	
Debt Issuance for Loans and Grants			
Subtotal for General Fund Repayment:	\$	\$	GF
Subtotal for Lottery Funds Repayment:	\$	\$	LF
Subtotal for Other Funds Repayment:	\$	\$	OF
Subtotal for Federal Funds Repayment:	\$	\$	FF
Total for Loans and Grants:	\$ 0	\$ 0	
Total All Debt Issuance	\$	\$	
Subtotal for General Fund Repayment:	\$	\$	GF
Subtotal for Lottery Funds Repayment:	\$	\$	LF
Subtotal for Other Funds Repayment:	\$	\$	OF
Subtotal for Federal Funds Repayment:	\$	\$	FF
GRAND TOTAL 2017-19	\$ 0	\$ - 0 -	\$ 0

Capital Financing Six-Year Forecast Summary 2021-23

AGENCY: Department of Fish and Wildlife
 Agency #: 63500

Provide amounts in the table below, by expected use and repayment source, of agency financing needs for the 2019-21 biennium. Include proposed project amounts only (do not include debt service either from previously issued debt or from new issue).

Use of Bond Proceeds	Bond Type		Totals by Repayment Source	
	General Obligation Bonds	Revenue Bonds		
Major Construction/ Acquisition Projects				
Subtotal for General Fund Repayment:	\$	\$	\$	GF
Subtotal for Lottery Funds Repayment:	\$	\$	\$	LF
Subtotal for Other Funds Repayment:	\$	\$	\$	OF
Subtotal for Federal Funds Repayment:	\$	\$	\$	FF
Total for Major Construction	0	\$	0	\$
Equipment/Technology Projects over \$500,000				
Subtotal for General Fund Repayment:	\$	\$	\$	GF
Subtotal for Lottery Funds Repayment:	\$	\$	\$	LF
Subtotal for Other Funds Repayment:	\$	\$	\$	OF
Subtotal for Federal Funds Repayment:	\$	\$	\$	FF
Total for Equipment/Technology	0	\$	0	\$
Debt Issuance for Loans and Grants				
Subtotal for General Fund Repayment:	\$	\$	\$	GF
Subtotal for Lottery Funds Repayment:	\$	\$	\$	LF
Subtotal for Other Funds Repayment:	\$	\$	\$	OF
Subtotal for Federal Funds Repayment:	\$	\$	\$	FF
Total for Loans and Grants:	0	\$	0	\$
Total All Debt Issuance	\$	\$	\$	
Subtotal for General Fund Repayment:	\$	\$	\$	GF
Subtotal for Lottery Funds Repayment:	\$	\$	\$	LF
Subtotal for Other Funds Repayment:	\$	\$	\$	OF
Subtotal for Federal Funds Repayment:	\$	\$	\$	FF
GRAND TOTAL 2019-21	\$	0	\$	- 0 -
			\$	0

Essential Packages

The Essential Packages represent changes made to the 2015-17 budget that estimate the cost to continue current legislatively approved programs into the 2017-19 biennium.

- 010 Vacancy Factor and Non-PICS Personal Services**
 - None

- 021/022 Cost of Phase-in and Phase-out Programs and One-time Costs**
 - None

- 031 Inflation/Price List Increases**
 - None

- 032 Above Standard Inflation**
 - None

- 033 Exceptional Inflation/Price List Increases**
 - None

- 050 Fund Shifts**
 - None

- 060 Technical Adjustments**
 - None

- 070 Revenue Reductions**
 - None

Agency Name:

Department of Fish and Wildlife

Policy Option Package Initiative:

136 – Deferred Maintenance (SB 5505)

Policy Option Package Element Addendum:

PURPOSE

DESCRIPTION OF PROBLEM OR ISSUE:

The Oregon Department of Fish and Wildlife capital assets require repair and replacement of critical elements that are essential for maintaining and enhancing the natural resources throughout Oregon. Many of the state's facilities are in need of large investments to ensure those facilities are able to maintain current operation goals. Over the years many of the agencies offices, storage buildings, maintenance shops, public facilities, and road systems have fallen into varying states of disrepair. The Secretary of State recognized in its audit that in 2005 ODFW reported an estimated \$94 million backlog of maintenance needs at facilities across the agency, including hatcheries, offices and Wildlife Areas. At the time of the audit less than \$1 million had been spent on maintenance annually in the ensuing 10 years due to lack of sufficient funding. Continuing to defer maintenance due to lack of funding will be more expensive for the agency in the long-term and costly for Oregonians in lost benefits and opportunities.

HOW ACHIEVED

PROPOSED SOLUTION TO THE PROBLEM OR ISSUE:

This policy option package request is the genesis of the agency's strategy to repair or replace facility infrastructure that is essential for the agency to be successful in the management of Oregon's natural resources. This will be the first phase of a multi-biennial plan to rehabilitate the agency's capital assets. Two strategies will be used to resolve the outstanding maintenance issues as identified in the Secretary of State's January 2016 audit report. For structures that do not require replacement, they will be repaired to meet current standards of construction and maximize their value to the associated facility campus. For all other structures, they will be demolished and replaced with new structures that meet current program needs and building code requirements. When the cost to repair a structure is in the same monetary range as replacement, the asset will be replaced to allow for gains in efficiency and longevity of the asset. In all cases, the strategy will look at increasing facility capacity to allow for future growth of program goals.

HOW THIS FURTHERS THE AGENCY MISSION OR GOALS:

ODFW's mission is "to protect and enhance Oregon's fish and wildlife and their habitats for use and enjoyment by present and future generations." Restoring the facility integrity of these assets is key to the agency's responsibility to manage natural resources for use and enjoyment of the general public of Oregon. These projects all help accomplish the agency's primary mission.

PERFORMANCE MEASURES TO QUANTIFY THE SUCCESS OF THE PROPOSAL:

This package supports several key performance measures (KPMs) for the agency. This package will contribute to KPM 2 (Percent of the license buying population with angling licenses and/or tags) by restoring the agency's facility infrastructure which will contribute to the continued production of wild and hatchery salmon, steelhead, and trout for harvest by sport and commercial fisheries across the Oregon landscape. These angling opportunities may attract additional anglers and help ODFW increase the percentage of license buying population with angling licenses or tags. This package will also contribute to KPM 4 (Percent of fish species of concern (listed as threatened, endangered, or sensitive) being monitored) by enabling monitoring of species listed on the Endangered Species Act through the execution of monitoring efforts at ODFW facilities.

STATUTORY REFERENCE:

The agency is authorized to conduct fish and wildlife management activities under ORS Chapters 496-498 and ORS Chapters 503-513.

ALTERNATIVES CONSIDERED AND REASONS FOR REJECTION:

For the repair projects identified in this package, alternatives were not considered other than performing the necessary repairs to maintain facility function and employee and public safety. The lowest cost solution has been identified at each location. For projects identified for replacement, a repair alternative was qualitatively evaluated to see if it was feasible to repair the asset. In these cases, the alternative to replacement was rejected because the repair was determined to be either equal to or more expensive than replacing the asset.

IMPACT OF NOT FUNDING:

If this package is not funded, the agency's capital assets will continue to deteriorate and will severely hamper the ability of the agency to meet resource goals and will hinder production of wild and hatchery fish. Additionally, critical monitoring activities of natural resources will be impeded if facilities continue to degrade and business operations will become interrupted.

EQUIPMENT TO BE PURCHASED (IF APPLICABLE):

None.

STAFFING IMPACT

None.

QUANTIFYING RESULTS

Each project will be monitored by ODFW Engineering Section staff during construction to ensure full execution of the work to repair or replace the capital asset. The successful execution of this package is expected to improve the agency's ability to protect Oregon's fish and wildlife resources, including the production of hatchery salmon, steelhead, and trout for harvest by sport and commercial fisheries. The improved capability and capacity to produce fish is expected to improve fishing opportunities for Oregon anglers which will increase the proportion of the population purchasing an angling license (KPM 2).

REVENUE SOURCE

\$10,000,000 Other Funds – General Obligation Bonds

ESSENTIAL AND POLICY PACKAGE FISCAL IMPACT SUMMARY

Fish & Wildlife, Oregon Dept of
Pkg: 010 - Non-PICS Psnl Svc / Vacancy Factor

Cross Reference Name: Major Construction and Acquisition
Cross Reference Number: 63500-089-00-00-00000

<i>Description</i>	General Fund	Lottery Funds	Other Funds	Federal Funds	Nonlimited Other Funds	Nonlimited Federal Funds	All Funds
Personal Services							
All Other Differential	-	-	-	-	-	-	-
Total Personal Services	-	-	-	-	-	-	-
Total Expenditures							
Total Expenditures	-	-	-	-	-	-	-
Total Expenditures	-	-	-	-	-	-	-
Ending Balance							
Ending Balance	-	-	-	-	-	-	-
Total Ending Balance	-	-	-	-	-	-	-

ESSENTIAL AND POLICY PACKAGE FISCAL IMPACT SUMMARY

Fish & Wildlife, Oregon Dept of
Pkg: 031 - Standard Inflation

Cross Reference Name: Major Construction and Acquisition
Cross Reference Number: 63500-089-00-00-00000

<i>Description</i>	General Fund	Lottery Funds	Other Funds	Federal Funds	Nonlimited Other Funds	Nonlimited Federal Funds	All Funds
Services & Supplies							
Agency Program Related S and S	-	-	-	-	-	-	-
Other Services and Supplies	-	-	-	-	-	-	-
Total Services & Supplies	-	-	-	-	-	-	-
Capital Outlay							
Other Capital Outlay	-	-	-	-	-	-	-
Total Capital Outlay	-	-	-	-	-	-	-
Total Expenditures							
Total Expenditures	-	-	-	-	-	-	-
Total Expenditures	-	-	-	-	-	-	-
Ending Balance							
Ending Balance	-	-	-	-	-	-	-
Total Ending Balance	-	-	-	-	-	-	-

ESSENTIAL AND POLICY PACKAGE FISCAL IMPACT SUMMARY

**Fish & Wildlife, Oregon Dept of
Pkg: 126 - Coastal Resilience Facility Newport**

**Cross Reference Name: Major Construction and Acquisition
Cross Reference Number: 63500-089-00-00-00000**

<i>Description</i>	General Fund	Lottery Funds	Other Funds	Federal Funds	Nonlimited Other Funds	Nonlimited Federal Funds	All Funds
Revenues							
General Fund Appropriation	-	-	-	-	-	-	-
Total Revenues	-	-	-	-	-	-	-
Capital Outlay							
Building Structures	-	-	-	-	-	-	-
Total Capital Outlay	-	-	-	-	-	-	-
Total Expenditures							
Total Expenditures	-	-	-	-	-	-	-
Total Expenditures	-	-	-	-	-	-	-
Ending Balance							
Ending Balance	-	-	-	-	-	-	-
Total Ending Balance	-	-	-	-	-	-	-

ESSENTIAL AND POLICY PACKAGE FISCAL IMPACT SUMMARY

Fish & Wildlife, Oregon Dept of
Pkg: 136 - Deferred Maintenance

Cross Reference Name: Major Construction and Acquisition
Cross Reference Number: 63500-089-00-00-00000

<i>Description</i>	General Fund	Lottery Funds	Other Funds	Federal Funds	Nonlimited Other Funds	Nonlimited Federal Funds	All Funds
Revenues							
General Fund Obligation Bonds	-	-	10,000,000	-	-	-	10,000,000
Total Revenues	-	-	\$10,000,000	-	-	-	\$10,000,000
Capital Outlay							
Building Structures	-	-	10,000,000	-	-	-	10,000,000
Other Capital Outlay	-	-	-	-	-	-	-
Total Capital Outlay	-	-	\$10,000,000	-	-	-	\$10,000,000
Total Expenditures							
Total Expenditures	-	-	10,000,000	-	-	-	10,000,000
Total Expenditures	-	-	\$10,000,000	-	-	-	\$10,000,000
Ending Balance							
Ending Balance	-	-	-	-	-	-	-
Total Ending Balance	-	-	-	-	-	-	-

Detail of Lottery, Other Funds and Federal Fund Revenues								
Source	Fund	ORBITS Revenue Accounts	2013-15 Actuals	2015-17 Legislatively Approved	2015-17 Estimated	2017-19		
						Agency Request	Governor's Recommended	Legislatively Adopted
Beginning Balance	L	0025	-	-	-	-	-	-
Transfer in - Intrafund	L	1010	-	-	-	-	-	-
Transfer in - Lottery Proceeds	L	1040	-	-	-	-	-	-
Transfer in - OR Watershed Enhancement Bd	L	1691	-	-	-	-	-	-
Transfer Out - Intrafund	L	2010	-	-	-	-	-	-
TOTAL LOTTERY FUNDS	0		-	-	-	-	-	-
Beginning Balance	O	0025	-	-	-	-	-	-
Non-Business Licenses & Fees	O	0210	-	-	-	-	-	-
Hunter & Angler Licenses	O	0230	-	-	-	-	-	-
Non Dedicated			-	-	-	-	-	-
Dedicated			-	-	-	-	-	-
Fee Increase – Non Dedicated			-	-	-	-	-	-
Fee Increase – Dedicated			-	-	-	-	-	-
subtotal Hunter & Angler Licenses			-	-	-	-	-	-
Commercial Fisheries Fund	O	0235	-	-	-	-	-	-
Park User Fees	O	0255	-	-	-	-	-	-
Charges for Services	O	0410	-	-	-	-	-	-
Fines and Forfeitures	O	0505	-	-	-	-	-	-
Rents & Royalties	O	0510	-	-	-	-	-	-
General Fund Obligation Bonds	O	0555	-	-	-	10,000,000	10,000,000	10,000,000
Interest Income	O	0605	-	-	-	-	-	-
Sales Income	O	0705	-	-	-	-	-	-
Donations	O	0905	-	-	-	-	-	-
Grants (Non-Fed)	O	0910	-	-	-	-	-	-
Other Revenues	O	0975	-	2,227,269	2,227,269	-	-	-
Transfer in - Intrafund	O	1010	1,001,753	-	-	-	-	-
Transfers in from Federal Indirect Revenue	O	1020	-	-	-	-	-	-
Transfer in - Oregon Department of Revenue	O	1150	-	-	-	-	-	-
Transfer in - Oregon Military Dept	O	1248	-	-	-	-	-	-
Transfer in - Marine Board	O	1250	-	-	-	-	-	-
Transfer in - Department of Energy	O	1330	-	-	-	-	-	-
Transfer in - Water Resources Department	O	1690	-	-	-	-	-	-
Transfer in - Watershed Enhancement Board	O	1691	-	-	-	-	-	-
Transfer out - Department of Transportation	O	1730	-	-	-	-	-	-
Transfer out - Intrafund	O	2010	-	-	-	-	-	-
Transfer out - Dept. of Administrative Services	O	2107	(1,753)	-	-	-	-	-
Transfer out - Department of State Police	O	2257	-	-	-	-	-	-
Transfer out - Department of Agriculture	O	2603	-	-	-	-	-	-
TOTAL OTHER FUND			1,000,000	2,227,269	2,227,269	10,000,000	10,000,000	10,000,000

Detail of Lottery, Other Funds and Federal Fund Revenues								
Source	Fund	ORBITS Revenue Accounts	2013-15 Actuals	2015-17 Legislatively Approved	2015-17 Estimated	2017-19		
						Agency Request	Governor's Recommended	Legislatively Adopted
Beginning Balance	F	0025	-	-	-	-	-	-
Federal Revenues	F	0995	-	2,773,750	2,773,750	-	-	-
Transfer in - Intrafund	F	1010	-	-	-	-	-	-
Transfer in - Marine Board	F	1250	-	-	-	-	-	-
Transfer out - Intrafund	F	2010	-	-	-	-	-	-
Transfer out - Federal Indirect	F	2020	-	-	-	-	-	-
TOTAL FEDERAL FUNDS			-	2,773,750	2,773,750	-	-	-

DETAIL OF LOTTERY FUNDS, OTHER FUNDS, AND FEDERAL FUNDS REVENUE

Fish & Wildlife, Oregon Dept of
2017-19 Biennium

Agency Number: 63500

Cross Reference Number: 63500-089-00-00-00000

<i>Source</i>	2013-15 Actuals	2015-17 Leg Adopted Budget	2015-17 Leg Approved Budget	2017-19 Agency Request Budget	2017-19 Governor's Budget	2017-19 Leg Adopted Budget
Other Funds						
General Fund Obligation Bonds	-	-	-	10,000,000	10,000,000	10,000,000
Other Revenues	-	-	2,227,269	-	-	-
Transfer In - Intrafund	1,001,753	-	-	-	-	-
Tsfr To Administrative Svcs	(1,753)	-	-	-	-	-
Total Other Funds	\$1,000,000	-	\$2,227,269	\$10,000,000	\$10,000,000	\$10,000,000
Federal Funds						
Federal Funds	-	2,323,750	2,773,750	-	-	-
Total Federal Funds	-	\$2,323,750	\$2,773,750	-	-	-

Facilities Maintenance

Program and Activities

ODFW owns 447 buildings valued under \$1 million and 27 buildings valued over \$1 million. These buildings total 806,659 square feet and have a replacement value in excess of \$89 million. In addition, ODFW owns and operates land improvements valued at \$27.2 million, leasehold improvements valued at \$1.44 million, roads valued at \$8.33 million, tunnels and bridges valued at \$720,500, utility systems valued at \$117.3 million, and docks, dikes, and dams valued at over \$27.9 million.

Basic maintenance comes from the facilities' operating budgets. ODFW contracted with DLR Group Architecture and Planning to perform a complete condition assessment of the majority of agency facilities. The Maintenance Master Plan was completed in December 2005. Additionally, the Department of Administrative Services commissioned a subsequent facility assessment that was completed in June of 2017. ODFW continues to search for ways to fund this backlog and has made incremental progress on addressing these needs each biennium.

Revenue Sources and Proposed Revenue Changes

Basic maintenance uses General Fund, Other Funds, and Federal Funds. A small amount of General Fund is used for Emergency Hatchery Maintenance projects in the Capital Improvement program.

The 2015-17 biennium was the first biennium under the six year fee adjustment that was effective January 2016. This fee package was developed to provide modest increases in each biennium over the next six years. This new approach allows for continued funding of the agency without a large increase for the customer in the first biennium.

Proposed New Laws

- None.

Facilities Maintenance Summary Report

AGENCY: Department of Fish and Wildlife
 Agency #: 63500

Value of Buildings and Building Improvements			Facilities Operations and Maintenance (O&M) Budget			
<u>Cost of Buildings</u> (as reported to Risk Management)		<u>Replacement Value</u> (Risk Management)	<u>Personal Services</u>	<u>Services & Supplies</u>	<u>Total</u>	
\$ 37,503,847		\$ 88,895,986	\$ 1,264,476	\$ 4,491,144	\$ 5,755,620	
Total Sq. Ft. of Bldgs: 806,659 sq. ft.			2017-19 Maint. Budget (no janitorial or utility)		Utilities Budget: \$ 3,117,430	
			÷ Square Feet of building: \$ <u>7.14</u> sq. ft.			
Total Outstanding Deferred Maintenance			Deferred Maintenance Budget 2015-17			
As of 6/30/13 Projected 6/30/14	Categories 1-2	Categories 3-5	Total	Personal Services	Services & Supplies	Capital Outlay
	\$ 8,172,000	\$ 83,000,000				
	\$ 7,359,602	\$ 83,000,000	\$ 0	\$ 0	\$ 0	\$ 0

Briefly describe the software (or manual process) used to identify routine (including preventative) facility maintenance needs.
 Comprehensive survey and database creation in 2006. Update database based on completed projects and input from personnel.

What data elements do you track with software (or manual process) described above?
 Age of elements, elements currently needing repair, predicted failure date of elements, and predicted cost of repair.

Briefly describe how the facilities maintenance budget is developed (note whether software (or manual process) described above is used in budget development). Budget amounts are determined at the Director's level; balancing maintenance needs with the department's needs. Current maintenance needs exceed realistic budget amounts.

Briefly describe the system or process used to identify Deferred Maintenance (e.g.; staff makes an annual estimate based on periodic assessments; evaluation of facilities using contract structural engineering firm, etc.)
 Consultant survey and database created in 2006. Staff inspections and annual progress tracking.

Briefly describe the process to provide funding for facilities maintenance. (e.g.; biennial appropriation; assessment to applicable programs to sustain a Capital Maintenance/Improvement Fund authorized under ORS 276.285(2); etc.)
 Biennial appropriation is developed in conjunction with other department needs.
Statutory references: ORS 276.229(2), ORS 276.227(5)

Facilities and Operations Maintenance Report

AGENCY Name: Department of Fish and Wildlife
 Agency #: 63500

	2013-15 Actuals	FTE	Leg Approved 2015-17	FTE	2017-19 Estimates	FTE	2017-19 Budget	FTE
General Fund								
Personal Serv - Utilities & Janitorial	\$0		\$0		\$0		\$0	
Personal Services - Maintenance	\$1,184,217		\$1,038,377	5	\$1,264,476	5	\$1,264,476	5
S&S - Utilities & Janitorial	\$42,349		\$15,458		\$15,458		\$16,030	
S&S - Maintenance	\$161,291		\$139,789		\$137,541		\$142,630	
GF Subtotal	\$1,387,857		\$1,193,624		\$1,417,475		\$1,423,136	
Lottery Funds								
Personal Serv - Utilities & Janitorial	\$0		\$0		\$0		\$0	
Personal Services - Maintenance	\$0		\$0		\$0		\$0	
S&S - Utilities & Janitorial	\$0		\$0		\$0		\$0	
S&S - Maintenance	\$0		\$0		\$0		\$0	
LF Subtotal	\$0		\$0		\$0		\$0	
Other Funds								
Personal Serv - Utilities & Janitorial	\$0		\$0		\$0		\$0	
Personal Services - Maintenance	\$0	6	\$0		\$0		\$0	
S&S - Utilities & Janitorial	\$1,238,045		\$1,162,331		\$1,155,925		\$1,198,635	
S&S - Maintenance	\$1,478,193		\$1,522,537		\$1,521,587		\$1,577,816	
OF Subtotal	\$2,716,648		\$2,684,868		\$2,677,512		\$2,776,451	
Federal Funds								
Personal Serv - Utilities & Janitorial	\$0		\$0		\$0		\$0	
Personal Services - Maintenance	\$0		\$0		\$0		\$0	
S&S - Utilities & Janitorial	\$1,883,243		\$1,939,741		\$1,939,741		\$2,011,509	
S&S - Maintenance	\$2,746,427		\$2,828,818		\$2,828,818		\$2,933,485	
FF Subtotal	\$4,629,670		\$4,768,559		\$4,768,559		\$4,944,994	
Total All Funds	\$8,734,175		\$8,647,051		\$8,863,546		\$ 9,144,581	

The Facilities Operations and Maintenance budget includes costs to operate and maintain facilities and keep them in repair including utilities, janitorial and maintenance costs. Maintenance costs are categorized as external building (roof, siding, windows, etc.); interior systems (electrical, mechanical, interior walls, doors, etc.); roads and ground (groundskeeper, parking lots, sidewalks, etc.) and centrally operated systems (electrical, mechanical, etc.). Agencies with significant facilities may include support staff if directly associated with facilities maintenance activities. Do not include other overhead costs such as accounting, central government charges, etc.

Facilities Deferred Maintenance Report

AGENCY: Department of Fish and Wildlife
 Agency #: 63500

Building Name or Identifier	Replacement Value (as of 7/25/14)	2013-15 Deferred Maintenance Budget for this Facility	Total O/S Deferred Maint. (projected) (as of 6/30/14)	Outstanding Deferred Maintenance (projected) by Category		
				1	- 2	3 - 5
Facilities > \$1 million (attach additional sheets if necessary)						
Big Creek Hatchery – Hatchery Building	\$ 1,111,116	\$ 0	\$ 0	\$ 0		\$ 0
Cascade Hatchery – Hatchery Building/Office	\$ 1,340,089	\$ 0	\$ 0	\$ 0		\$ 0
East Region HQ	\$ 1,100,244	\$ 0	\$ 0	\$ 0		\$ 0
EE Wilson WLA – Pheasant Brood Bldg	\$ 1,086,191	\$ 0	\$ 0	\$ 0		\$ 0
Fall River Hatchery – Hatchery Building	\$ 2,080,653	\$ 0	\$ 0	\$ 0		\$ 0
Gnat Creek Hatchery – Hatchery Building	\$ 1,526,162	\$ 0	\$ 17,700	\$ 17,700		\$ 2,393,000
High Desert Regional Office	\$ 1,328,014	\$ 0	\$ 0	\$ 0		\$ 0
Hines District Office/Shop Building	\$ 1,663,232	\$ 0	\$ 0	\$ 0		\$ 0
John Day District Office/Shop Building	\$ 1,031,035	\$ 0	\$ 0	\$ 0		\$ 0
John Day Screen Shop	\$ 1,270,974	\$ 0	\$ 0	\$ 0		\$ 0
Klamath Hatchery – Cold Storage Building	\$ 1,249,569	\$ 0	\$ 0	\$ 0		\$ 0
Klamath Hatchery – Hatchery Building	\$ 1,323,462	\$ 0	\$ 0	\$ 0		\$ 0
Klaskanine Hatchery – Hatchery Building	\$ 1,601,951	\$ 0	\$ 0	\$ 0		\$ 0
Marine Resources Program Office	\$ 2,382,377	\$ 0	\$ 30,200	\$ 30,200		\$ 699,000
Marion Forks Hatchery – Hatchery Building	\$ 1,176,158	\$ 0	\$ 0	\$ 0		\$ 0
McKenzie Hatchery – Service Building	\$ 1,125,777	\$ 0	\$ 0	\$ 0		\$ 0
McKenzie Hatchery – Hatchery Building	\$ 1,192,461	\$ 0	\$ 0	\$ 0		\$ 0
Oak Springs Hatchery – Cold Storage Building	\$ 1,185,857	\$ 0	\$ 0	\$ 0		\$ 0
Oak Springs Hatchery – Incubation Building	\$ 4,376,882	\$ 0	\$ 0	\$ 0		\$ 0
ODFW HQ	\$ 15,019,910	\$ 0	\$ 0	\$ 0		\$ 715,000

Rock Creek Hatchery – Hatchery Building	\$ 1,045,823	\$ 0	\$ 0	\$ 0	\$ 0
South Willamette District Office	\$ 1,257,714	\$ 0	\$ 44,000	\$ 44,000	\$ 1,600,000
The Dalles Screen Shop	\$ 1,694,858	\$ 0	\$ 2,100	\$ 2,100	\$ 225,000
	\$	\$	\$	\$	\$
From attached Sheets					
From page _____	\$	\$	\$	\$	\$
From page _____	\$	\$	\$	\$	\$
Total Facilities > \$1 million (total from detail above)	\$ 48,170,509	\$ 0	\$ 94,000	\$ 94,000	\$ 5,632,000
Facilities < \$1 million (total for all facilities < \$1 million)	\$ 46,709,041	\$ 23,876	\$ 8,078,000	\$ 8,078,000	\$ 77,368,000
Total all Facilities	\$ 94,879,550	\$ 23,876	\$ 8,172,000	\$ 8,172,000	\$ 83,000,000