



Forsea Access Area



The Forsea Access Area is a cooperative program between a private landowner and the Oregon Department of Fish and Wildlife Access and Habitat Program to maintain public hunting access on private lands and increase access to public land. The Forsea Ranch Access Area south of Richland, OR provides public hunting opportunities for deer, bighorn sheep, predators, chukar, and quail. All Oregon Department of Fish and Wildlife Regulations and Seasons Apply.

Access Period: August 1 - March 1

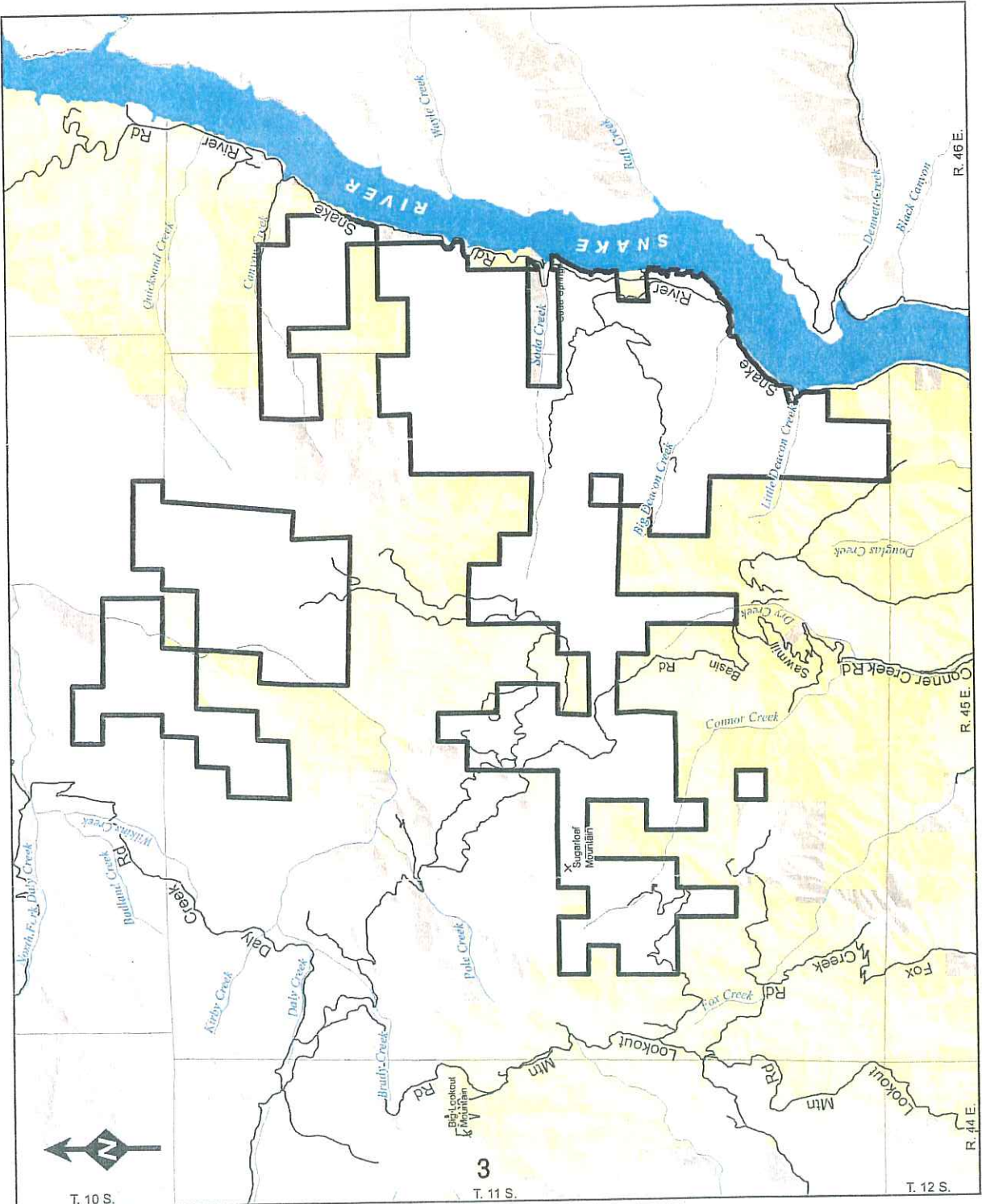
Area Regulations:

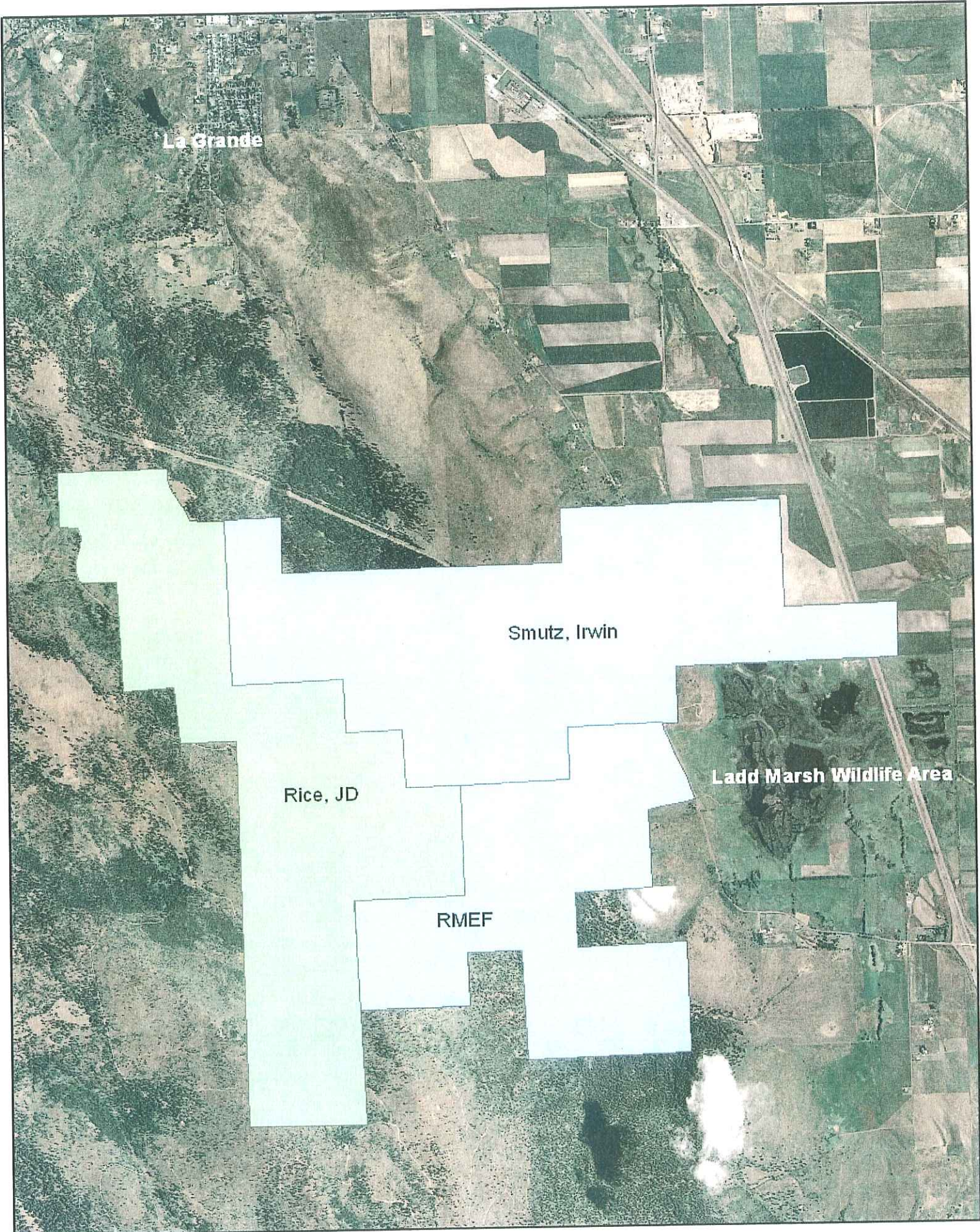
- Motorized vehicles only on established roads
- No camping or night-time use of private land
- No fires, be careful with cigarettes
- No littering, pick up any trash
- Report unlawful activities
- Respect landowners' rights and needs
- Leave all gates as you found them
- Do not damage roads during wet conditions

No permission is required to hunt on the Forsea Access Area. The area is mostly surrounded by public land, however you are responsible for knowing property boundaries. Do Not Trespass on surrounding private lands.

Hunting on private lands is a privilege, not a right. Private land hunting opportunities will remain in the future only if the property and rights of private landowners are respected! Abuse it and you will lose it!

-  Forsea Access Area
-  BLM
-  Other Private





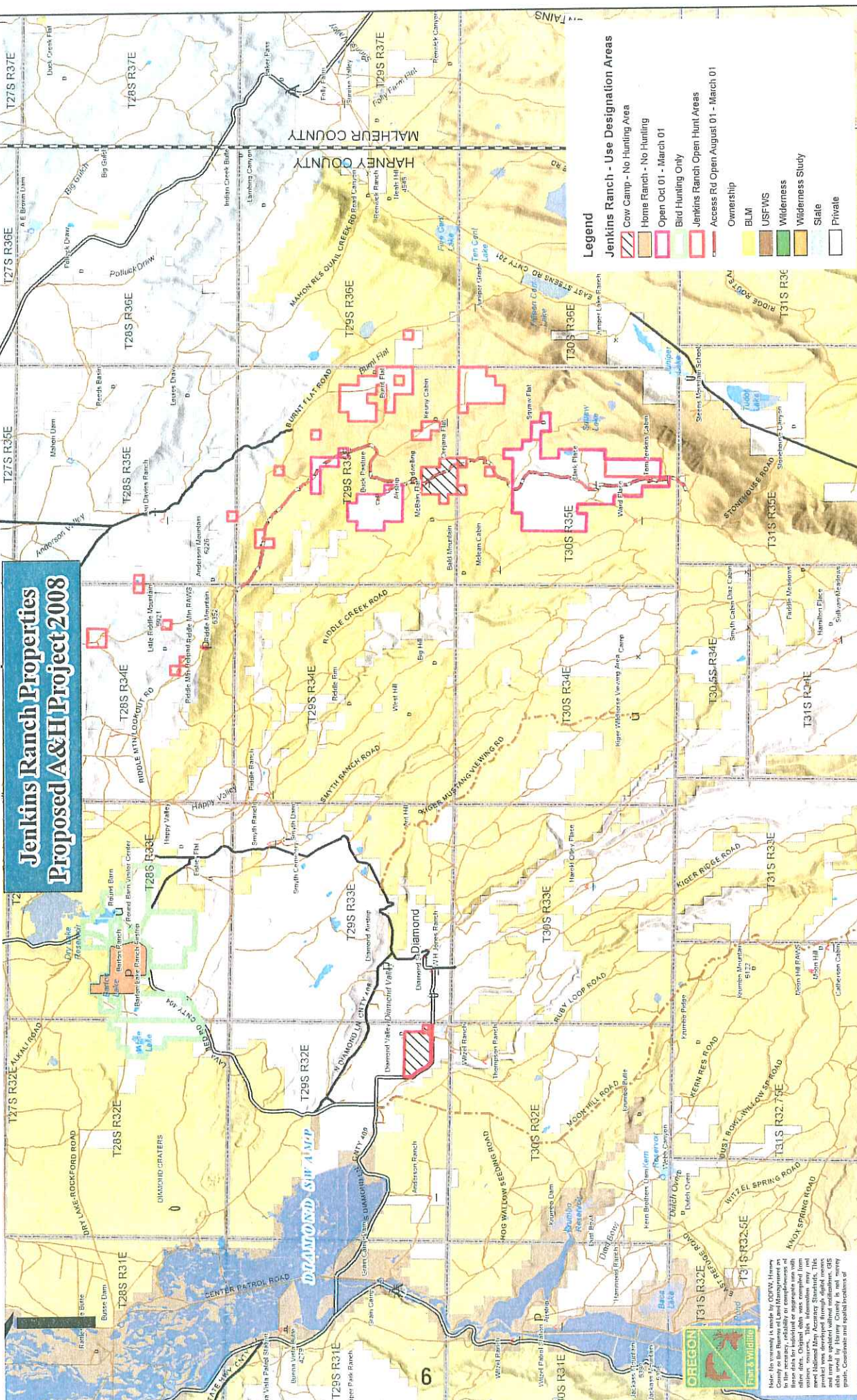
La Grande

Smutz, Irwin

Rice, JD

Ladd Marsh Wildlife Area

RMEF

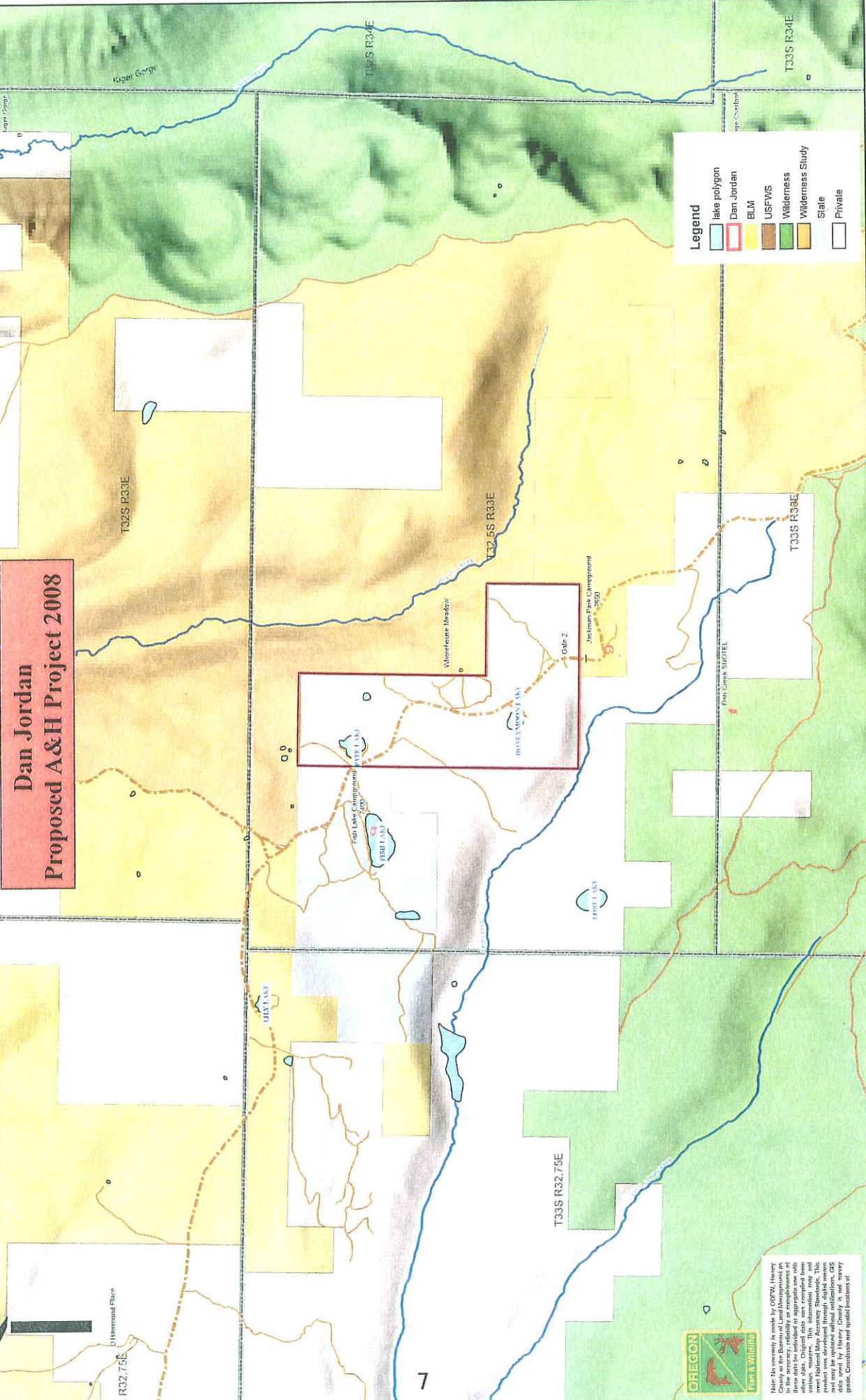


Jenkins Ranch Properties Proposed A&H Project 2008

- Legend**
- Jenkins Ranch - Use Designation Areas**
- Cow Camp - No Hunting Area
 - Home Ranch - No Hunting
 - Open Oct 01 - March 01
 - Bird Hunting Only
 - Jenkins Ranch Open Hunt Areas
 - Access Rd Open August 01 - March 01
- Ownership**
- BLM
 - USFWS
 - Wilderness Study
 - State
 - Private

OREGON
Bank & Wildlife

Map: No warranty is made by ODFW, Bureau of Land Management or the Bureau of Land Management as to the accuracy, reliability or completeness of the information or data shown on this map. Original data were compiled from various sources. This information was not prepared by ODFW, Bureau of Land Management or the Bureau of Land Management and may be updated without notification. ODFW, Bureau of Land Management and the Bureau of Land Management are not responsible for any errors, omissions, or inaccuracies in this map. Coordinates and spatial features of



**Dan Jordan
Proposed A&H Project 2008**

Legend

- Lake polygon
- Dan Jordan
- BLM
- USFWS
- Wilderness
- Wilderness Study
- Slate
- Private



Note: No warranty is made by ODFW, Harney County or the Bureau of Land Management as to the accuracy, reliability or completeness of the information contained on this map. Original data was compiled from various sources. This information may not be updated through digital means. GIS data may be updated without notification. GIS products are not guaranteed to be accurate. Coordinate and spatial projections of

