

DRAFT

**LOWER DESCHUTES WILDLIFE AREA
MANAGEMENT PLAN**

January 2009

**Oregon Department of Fish and Wildlife
3406 Cherry Avenue NE
Salem, Oregon 97303**



Table of Contents

Executive Summary	1
Introduction	3
Purpose of the Plan	3
Oregon Department of Fish and Wildlife Mission and Authority.....	3
Purpose and Need of the White River Wildlife Area	3
Wildlife Area Goals and Objectives	4
Wildlife Area Establishment.....	5
Description and Environment	6
Physical Resources	6
Location	6
Climate.....	6
Topography and Soils	8
Habitat Types.....	8
Biological Resources	11
Mammals	12
Birds.....	11
Fish	11
Amphibians and Reptiles	12
Species of Conservation Concern.....	12
Non-native Species	12
Monitoring	14
Cultural Resources	16
Social Environment	18
Demographics.....	18
Land Use.....	18
Infrastructure	20
Developments/Facilities.....	20
Water Rights.....	20
Easements/Access Agreements.....	20
Land Acquisition and Adjustment	20
Public Use	21
Public Access	21
Hunting, Trapping and Angling	21
Wildlife Viewing	22
Educational/Interpretive.....	22
Objectives and Strategies	22
Plan Implementation	27
Funding	27
Staffing/Organization	27
Compliance Requirements	28
Partnerships	28
Adaptive Management.....	29
Plan Amendment and Revision	29
References	30

Appendices **31**

- Appendix A.** Native Plant Species Known to Occur on the Lower Deschutes Wildlife Area
- Appendix B.** Non-native Plant Species Known to Occur on the Lower Deschutes Wildlife Area
- Appendix C.** Fish and Wildlife Species Known to Occur on the Lower Deschutes Wildlife Area
- Appendix D.** Water Rights on the Lower Deschutes Wildlife Area
- Appendix E.** Easements Held on the Lower Deschutes Wildlife Area
- Appendix F.** Land Acquisitions and Transfers involving the Lower Deschutes Wildlife Area
- Appendix G.** Legal Obligations Influencing Management of the Lower Deschutes Wildlife Area

List of Figures

- Figure 1.** Lower Deschutes Wildlife Area Features and Ownership
- Figure 2.** Habitat Types Present on the Lower Deschutes Wildlife Area
- Figure 3.** Land Uses Surrounding the Lower Deschutes Wildlife Area

List of Tables

- Table 1.** Habitat Types and Approximate Acreages on the Lower Deschutes Wildlife Area
- Table 2.** Federal and State Listed Endangered, Threatened, Candidate and Species of Concern Potentially Present on the Lower Deschutes Wildlife Area
- Table 3.** Non-native Wildlife Species Known to May Occur on the Lower Deschutes Wildlife Area
- Table 4.** Wasco and Sherman County List of Noxious Weed Species Known to Occur on the Lower Deschutes Wildlife Area
- Table 5.** Facilities and Developments on the Lower Deschutes Wildlife Area
- Table 6.** Estimated Annual Hunting, and Angling Use Days on the Lower Deschutes Wildlife Area
- Table 7.** Estimated Annual Wildlife Viewing Use Days on the Lower Deschutes Wildlife Area

Executive Summary

Purpose of the Plan

This plan will guide management of Lower Deschutes Wildlife Area (LDWA) for the next 10 years. Purposes of this plan are:

- To provide clear direction for management of LDWA;
- To provide long-term continuity in wildlife area management;
- To communicate the department's management priorities for LDWA to its neighbors, visitors, and to the public;
- To ensure that management programs on LDWA are consistent with the original mandate and purpose of the area when it was first established;
- To ensure that management of LDWA is consistent with Federal, State, and local natural resource plans;
- To ensure that management activities address conservation priorities and recommendations described in the 2006 Oregon Conservation Strategy, and;
- To provide a basis for budget request to support the LDWA needs for staffing, operations, maintenance, and capital improvements.

Historical Background

Located along the lower Deschutes River in the north central part of Oregon, LDWA encompasses 8,526 acres of land and water owned or administered by the Oregon Department of Fish and Wildlife (department). LDWA was established in 1983, with the initial donation of land by the Oregon Wildlife Heritage Foundation (OWHF) of 2,758 acres. In 1986 an additional 5,158 acres of land was again donated to the department by the OWHF. The primary purpose of LDWA is to provide habitat for threatened and endangered fish species, bighorn sheep, mule deer and other native and desirable fish and wildlife species.

Planning Approach

No formal management plans have been written and adopted for the LDWA although a draft LDWA Comprehensive Plan was written in 1993. The 2009 LDWA Management Plan is based on a review and revision of this earlier draft plan.

The 2009 LDWA Management Plan offers a comprehensive vision and action plan for the next 10 years. This plan describes the management issues and provides actions for addressing them. These actions will be implemented during the life of this plan, but are subject to funding and personnel availability. The management plan will be reviewed in 2014 to gauge the implementation progress and make necessary revisions and it will be reviewed in its entirety in 2019.

Lower Deschutes Wildlife Area Vision

The vision for Lower Deschutes Wildlife Area is as follows:

Habitat for bighorn sheep and mule deer is enhanced and managed through sound stewardship practices, while balancing the needs of other native and desired fish and wildlife species, as well as providing recreational opportunities and access along the lower 18 miles of the Deschutes River for present and future generations.

Lower Deschutes Wildlife Area Goals and Objectives

The goals of the LDWA are:

Goal 1: To protect, enhance and restore aquatic and riparian habitats to benefit native fish and wildlife and desired game species.

Goal 2: To protect, enhance and manage upland habitats to benefit native wildlife and desired game species.

Goal 3: To provide and promote fish and wildlife oriented recreational and educational opportunities to the public which are compatible with Goal 1 and 2.

Specific objectives and strategies to implement each goal, as well as detailed rationale are provided in this plan on pages 22-27.

Introduction

Purpose of the Plan

This document will guide management of the Lower Deschutes Wildlife Area (LDWA) for the next ten years. The Oregon Department of Fish and Wildlife's (department) management planning process for wildlife areas involves the development of broad goals, formulation of specific objectives and management strategies to achieve those goals. The purposes of this plan are to:

- Provide clear direction for the management of the LDWA;
- Provide long-term continuity in wildlife area management;
- Communicate the department's management priorities for the LDWA to its neighbors, visitors, and to the public;
- Ensure that management programs on the LDWA are consistent with the original mandate and purpose of the area when it was first established;
- Ensure that management of the LDWA is consistent with Federal, State and local natural resource plans,
- Ensure that management activities address conservation priorities and recommendations described in the 2006 Oregon Conservation Strategy, and;
- Provide details on staffing, operations, maintenance, and capital improvement needs on the LDWA.

Oregon Department of Fish and Wildlife Mission and Authority

The mission of the department is to protect and enhance Oregon's fish and wildlife and their habitats for use and enjoyment by present and future generations. The department is the only state agency charged exclusively with protecting Oregon's fish and wildlife resources. The state Wildlife Policy (Oregon Revised Statute 496.012) and Food Fish Management Policy (Oregon Revised Statute 506.109) are the primary statutes that govern the management of fish and wildlife resources.

Purpose and Need of the Lower Deschutes Wildlife Area

The LDWA was established in 1983, for the primary purpose of providing permanent public angler access to the lower 11 miles of the Deschutes River. The acquisition of additional lands in 1986 allowed for an additional seven miles of permanent access while providing for enhancement opportunities for wildlife species. LDWA is also managed to enhance and/or maintain habitat for other native and desired non-native fish and wildlife species and to provide wildlife oriented recreational opportunities to the public.

The natural resources available on the LDWA will be managed in such a manner as to protect, maintain, enhance and restore fish and wildlife habitats to support optimum population levels of species for the enjoyment of present and future citizens. To protect these natural resources, management programs and strategies utilized on the LDWA will meet or exceed habitat protection policies and standards set by the department.

The Oregon Conservation Strategy (OCS) (ODFW, 2006), adopted in 2006, is the state's overarching strategy for conserving fish and wildlife, to help ensure that Oregon's natural treasures are passed on to future generations. The lower Deschutes River is specifically described in the OCS and contains key habitats such as grasslands, riparian and sagebrush shrub-steppe and key species such as sagebrush lizard and summer steelhead. Recommended conservation actions include:

- Maintain or enhance in channel watershed function, connection to riparian habitat, flow and hydrology
- Promote early detection and suppression of invasive weeds
- Restore and maintain complex, continuous sage habitat
- Restore and maintain riparian habitats

Many habitat management activities which occur on the LDWA address conservation actions recommended in the OCS and these will be identified throughout this management plan.

Lower Deschutes Wildlife Area Vision Statement

The vision for the LDWA is as follows:

Habitat for bighorn sheep and mule deer is enhanced and managed through sound stewardship practices, while balancing the needs of other native and desired fish and wildlife species, as well as providing recreational opportunities and access along the lower 18 miles of the Deschutes River for present and future generations.

Wildlife Area Goals and Objectives

Wildlife area goals are broad, open-ended statements of desired future conditions that convey a purpose but do not define measurable units. In contrast, objectives are more concise statements of what the department wants to achieve, how much the department wants to achieve, when and where to achieve it, and who will be responsible for the work. Objectives derive from goals and provide the basis for determining strategies, monitoring wildlife area accomplishments, and evaluating the success of strategies.

The goals and objectives for the LDWA are:

Goal 1: To protect, enhance and restore aquatic and riparian habitats to benefit native fish and wildlife and desired game species.

Objective 1.1: Protect, enhance, and restore approximately 492 acres of freshwater aquatic and 61 acres of riparian habitats.

Goal 2: To protect, enhance and manage upland habitats to benefit native wildlife and desired game species.

Objective 2.1: Protect, enhance, and restore approximately 7,835 acres of mixed sagebrush/grassland and 131 acres of grassland habitats.

Objective 2.2: Enhance and manage approximately 7 acres of agricultural upland habitats.

Goal 3: To provide and promote fish and wildlife oriented recreational and educational opportunities to the public which are compatible with Goals 1 and 2.

Objective 3.1: Provide approximately 12,000 hunting and angling use days annually.

Objective 3.2: Provide approximately 8,000 wildlife viewing and education/ interpretation use days annually.

Wildlife Area Establishment

Around 1920, the Eastern Oregon Land Company acquired approximately 3,700 acres with 15 miles of river frontage in the lower Deschutes River canyon. The company's objective was to build hydroelectric dams to provide power to an expanding Pacific Northwest population. Two large dams were engineered for construction along the river. However, economic downturn and subsequent governmental regulations prevented the company from realizing its plans.

In 1970, the lower 100 miles of the Deschutes River were designated a component of the Oregon State Scenic Waterways System. This program is designed to protect and enhance the scenic, aesthetic, natural, recreation, and fish and wildlife values along scenic waterways. Designation as a Scenic Waterway effectively ended all plans for dams on the lower Deschutes River.

By 1983, the Eastern Oregon Land Company, having abandoned its dam building plans, sought to sell its Deschutes River properties it owned. Victor Atiyeh, then governor of Oregon, was interested in preserving and enhancing the recreational attributes and public access to the river. The Oregon Wildlife Heritage Foundation (OWHF) was called upon to raise money to acquire and preserve this land for the people of the state of Oregon. During the first round of fund raising, over 10,000 individuals contributed to the purchase fund. The second round of fund raising consisted of corporate donations. Plaques with the major donors names were placed on rock monuments scattered along the Deschutes River.

Concurrently, the Lower Deschutes River Management Plan was written. This planning process involved all entities that had an interest in the management of the lower Deschutes River, including federal, tribal, state, and local agencies, private landowner, as well as commercial and private users of the river. One private landowner who was a key player in this process was Ed Sharp, who owned 5,158 acres of land along the Deschutes River. In 1986, Mr. Sharp sold his property to the OWHF.

In 1988, the U.S. Congress designated the lower 100 miles of the Deschutes River (from the Pelton Re-regulating Dam to its confluence with the Columbia River) as a component of the National Wild and Scenic River system and it was also adopted by the Warm Springs Wild and Scenic Rivers Act as Tribal Ordinance 73 in 1992 (Bureau of

12/22/2008

Land Management et al. 1993). A final joint river management plan and Environmental Impact Statement was completed in January 1993 after almost five years of planning and public review. The LDWA is included in the river reach as part of Segment 4, which extends from Macks Canyon, 23 miles downstream to the confluence with the Columbia River.

Purchase of the Eastern Oregon Land Company and Sharp properties was accomplished with private and corporate contributions, river pass and user fees, fishing and hunting license fees, non-game state tax check off monies and federal excise tax on fishing tackle, ammunition and guns. In total the OWHF deeded 7,916 acres to the department along the lower Deschutes River.

Additionally, within a mile radius of the LDWA, there are approximately 6,040 acres of Bureau of Land Management (BLM) and 920 acres of Oregon State Parks (OPRD) property that directly border the wildlife area. Acquisition of the LDWA has guaranteed public access to approximately 14,876 acres of state and federal land.

Description and Environment

Physical Resources

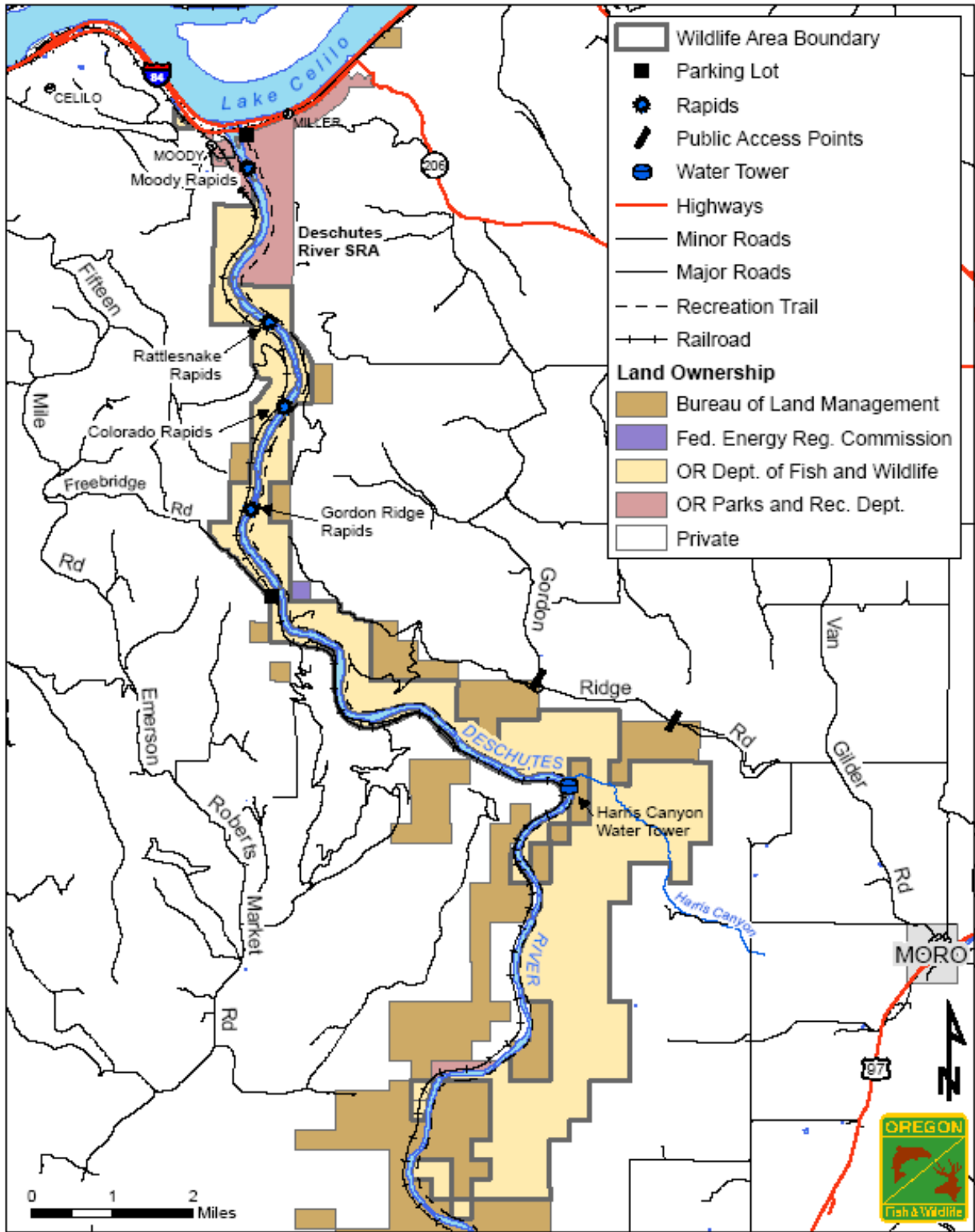
Location

The LDWA is located approximately 15 miles east of The Dalles in Wasco County and three miles west of Moro in Sherman County, Oregon. The LDWA consists of a narrow, continuous belt of property stretching 18 river miles along both sides of the lower Deschutes River (**Figure 1**). The BLM lands are along all sides of the boundary and have in holdings within the LDWA. Private lands are located along both the east and west boundaries. The LDWA is located in the West Biggs Wildlife Management Unit.

Climate

The LDWA is characterized by light annual precipitation and extreme temperatures in the summer and winter seasons. Specifically, the Deschutes River Basin averages 10 inches of annual precipitation, with 70-80% of this occurring between November and March. Although the area may receive snow fall during the winter, the majority of precipitation annually is a result of rainfall. Temperature extremes range from -30⁰F to 115⁰F. Minimum and maximum average temperatures are 37.4⁰F and 63.3⁰F, with annual average temperature at 50.4 ⁰F (Taylor and Hannon 1999).

Figure 1 - Lower Deschutes Wildlife Area Features and Ownership



Topography and Soils

The LDWA is located along the Deschutes River and the soils are mostly river wash, sand and rock. Lickskillet Soil Series occurs on the south facing slopes, and Wrenthem Soil Series is found on the north facing slopes. The geology consists generally of Columbia River basalt. Sediment and pieces of granite from Idaho and Montana, deposited from the numerous Missoula floods can be found on the area. Petrified wood buried from these deposits has been found along a narrow band. The Lower Deschutes River basin is a high basaltic plateau with deeply cut canyons.

The entire wildlife area has been surveyed by the federal Soil Conservation Service resulting in the mapping of 44 soil types (Green, 1982 and MacDonald, 1999). The three most common soils types on the area, which make up 71% of the soils, are the Lickskillet extremely stony loam (LsDS) and the Nansense rocky silt loam (NaD) and rock outcrops. The LsDS soils consist of very stony to extremely stony soils that are most commonly on south-facing canyon walls and on breaks to rivers. They were formed from weathered basalt mixed with loess. The native vegetation associated with this soil type is mainly bluebunch wheatgrass (*Pseudoroegneria spicata*) and Sandberg bluegrass (*Poa sandbergii*). The NaD soils occur on very steep north-facing slopes. It is dark colored and is uniform in texture. It has formed from loess, under native vegetation consisting mainly of Idaho fescue (*Festuca idahoensis*) and bluebunch wheatgrass.

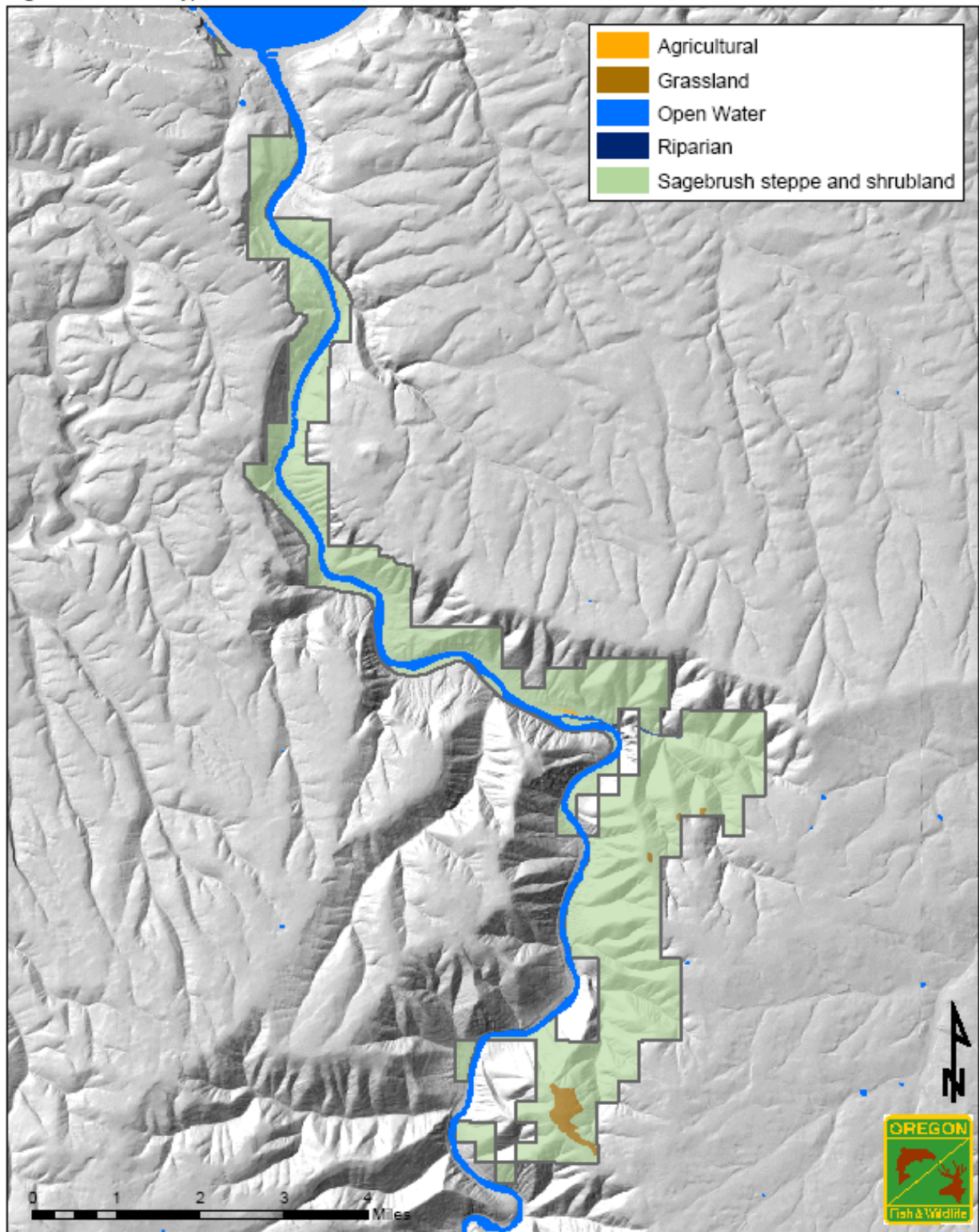
Elevations on LDWA range from 270 feet along the Deschutes River near the mouth to 2,300 feet on the extreme southeast end of the area. Topography ranges from the low areas of riparian zone along the Deschutes River to grassy hillsides and rock cliffs that extend toward relatively even landscapes at the top of the canyons.

Habitat Types

Many of the plant communities on the LDWA have been altered from their natural state by various types of human activities and subsequent introduction of non-native plants. Historically portions of the LDWA were cleared for agriculture or grazed by cattle and domestic sheep.

Currently, five habitat types are found within the borders of the LDWA (**Figure 2**). The largest habitat type (by acreage) is sagebrush steppe and shrubland while the smallest type is agriculture (**Table 1**). Grasslands, sagebrush steppe and riparian are considered Key Habitats within the Columbian Plateau ecoregion as defined in the OCS (ODFW, 2006). The OCS recommends conservation actions such as restoring and maintaining sagebrush steppe and riparian habitats.

Figure 2 - Habitat Types within Lower Deschutes Wildlife Area



Sagebrush steppe and shrubland

Located throughout the LDWA, the sagebrush and grassland mixed habitat type comprises the vast majority of the area with over 7,835 acres. Sagebrush is the dominant shrub component on the area. Bitterbrush can be found in isolated pockets and is a valuable component in the diet of wintering mule deer on the area.

Freshwater Aquatic

Four hundred and ninety two acres of open water exists where the Deschutes River flows through or borders the LDWA.

Grassland

The 131 acres of grasslands contain bluebunch wheatgrass (*Pseudoroegneria spicata*), sheep fescue (*Festuca ovina*), big bluegrass (*Poa ampla*), small burnet (*Sanguisorba minor*), and alfalfa (*Medicago sativa*). There are four parcels where invasive grass species such as medusahead (*Taeniatherum caput-medusae*) and cheatgrass brome (*Bromus tectorum*) are present. These parcels are being planted with native grasses and forbs to improve wildlife habitat.

Riparian

Approximately 61 acres of riparian areas along the reaches of the Deschutes River and a small portion of Harris Creek can be found on the LDWA. The riparian plant communities which border these streams are comprised mainly of red alder (*Alnus rubra*), with periodic spirea (*Spiraea* spp.), chokecherry (*Prunus virginiana*), and mock orange (*Philadelphus lewisii*) also being found.

Agricultural Land

The LDWA contains seven acres of agricultural lands which are planted with spring barley. Farming activity is conducted by LDWA staff to provide supplemental feed and winter cover for various wildlife species.

Table 1. Habitat Types and Approximate Acreages on the Lower Deschutes Wildlife Area

Habitat Type	Acres*
Sagebrush Steppe and Shrub Land	7,835
Freshwater Aquatic	492
Grassland	131
Riparian	61
Agricultural Land	7
Total	8,526

*These approximate acreages, which were developed by digitizing aerial maps, include department-owned land within the LDWA.

A list of trees, shrubs, forbs, legumes, composites, and grasses that are known to occur on the LDWA is located in **Appendix A** and **B**.

Biological Resources

Due to its habitat diversity and water availability, the LDWA supports numerous fish and wildlife species. Management actions that benefit deer and bighorn sheep also provide benefits for furbearers, upland game birds, waterfowl, songbirds, reptiles, amphibians and fish.

Currently 191 species have been identified on the LDWA, including 141 species of birds, 15 species of fish, 31 species of mammals and 14 species of amphibians and reptiles (**Appendix C**).

Birds

Of the 141 bird species documented on the area, many are migratory occurring only during spring and fall migration periods. Resident Canada geese (*Branta canadensis*) and the vocal canyon wren (*Catherpes mexicanus*) nest on the area.

The only native upland game bird on the area is the mourning dove (*Zenaida macroura*).

Non-native upland game bird species include chukar partridge (*Alectoris chukar*), Hungarian (gray) partridge (*Perdix perdix*) ring-necked pheasant (*Phasianus colchicus*), and California quail (*Callipepla californica*).

Raptors such as bald eagle (*Haliaeetus leucocephalus*) and golden eagle (*Aquila chrysaetos*), osprey (*Pandion haliaetus*), red-tailed hawk (*Buteo jamaicensis*) and American kestrel (*Falco sparverius*) forage on the wildlife area.

Fish

The LDWA contains migration, rearing, and spawning habitat important to a variety of native fish species. There are five species of federally listed Threatened and Endangered (T&E) species (Appendix C) in the Deschutes River but only the summer steelhead (*Oncorhynchus mykiss*) rears and spawns around the LDWA. Other T&E fish species that have been found are visitors or strays from other river systems.

Fish species that are popular with anglers in the lower Deschutes River include spring and fall Chinook salmon (*Oncorhynchus tshawytscha*), redband trout (*Oncorhynchus mykiss*), and bull trout (*Salvelinus confluentus*). Pacific lamprey (*Lampetra tridentata*), a culturally significant species for tribal members, is also present. The section of the Deschutes River that flows through the LDWA is important habitat for spawning and rearing of these species, most notably fall Chinook salmon. The Deschutes River within the LDWA is also an important migratory corridor for these species, especially adult summer steelhead, which attracts anglers from around the world. Middle Columbia River summer steelhead and bull trout are federally listed as threatened under the ESA. No fish inhabit the streams and drainages that flow off the wildlife area into the Deschutes River.

Mammals

A total of 31 mammalian species have been documented on LDWA. Abundant species include mule deer (*Odocoileus hemionus hemionus*), and California bighorn sheep (*Ovis canadensis californicus*). Common species on the area include cougar (*Puma concolor*), bobcat (*Lynx rufus*), raccoon (*Procyon lotor*), river otter (*Lutra canadensis*), California ground squirrel (*Spermophilus beecheyi*) and mountain cottontail (*Sylvilagus nutallii*).

No recent surveys have been conducted for furbearers, bats or small mammals. In order to determine population levels of these species, additional resources would be required to conduct adequate surveys.

Amphibians and Reptiles

No active management for amphibians and reptiles exists at this time on the LDWA. Amphibian and reptile species include, but are not limited to, rough-skinned newt (*Taricha granulosa*), western toad (*Bufo boreas*), Pacific treefrog (*Pseudacris regilla*), northern sagebrush lizard (*Sceloporus graciosus*), western fence lizard (*Sceloporus occidentalis*), gopher snake (*Pituophis catenifer*), common garter snake (*Thamnophis sirtalis*) and western rattlesnake (*Crotalus viridis*). No threatened or endangered amphibians or reptiles are known to be present on the LDWA.

Species of Conservation Concern

There have been no formal surveys on the LDWA specifically to document the presence of state or federally listed endangered, threatened, or candidate species.

There are several species of federal or state concern that are present at least part of the year on LDWA (**Table 2**) (ODFW, 2008). Several species identified in Table 2 are also Strategy Species as defined in the OCS. Key Species are Strategy Species with a special emphasis within a conservation opportunity area. The OCS prescribes conservation activities to be implemented that contribute to the overall health of strategy habitats and species in the Columbia Plateau Ecoregion. For example, LDWA's diverse habitat management actions, activities and programs contribute to the conservation of Lewis's woodpeckers and summer steelhead.

Non-native Species

Non-native wildlife species present on the LDWA include invasive species such as the rock dove (*Columba livia*) and house mouse (*Mus musculus*) and introduced game species such as chukar, California quail and ring-necked pheasant (**Table 3**).

The Dalles Wildlife District staff conducts ring-necked pheasant, chukar, and California quail counts on the LDWA during the summer of each year. Except for the authorized hunting seasons for introduced upland game birds, there is no active management effort on the LDWA aimed specifically at control of non-native species.

Many non-native plants occur on the LDWA (**Table 4**). Some non-native plants are actively controlled by biological, chemical and mechanical means.

Table 2. Federal and State Listed Endangered, Threatened, Candidate and Species of Concern Potentially Present on the Lower Deschutes Wildlife Area

(Federal Status: C–Candidate; E–Endangered; SC–Species of Concern; T–Threatened;
 State Status: C – Critical; E – Endangered; T – Threatened; S – Sensitive V – Vulnerable;
 Oregon Conservation Strategy (OCS) Strategy Species present - x, Key Species - X)

Common Name	Scientific Name	Federal Status	State Status	OCS
Steelhead (Middle Columbia River ESU summer run)	<i>Oncorhynchus mykiss</i>	T	C	X
Chinook Salmon (Middle Columbia ESU/SMU fall, spring runs)	<i>Oncorhynchus tshawytscha</i>	T	C	
Bull Trout (Deschutes Bull trout SMU) population)	<i>Salvelinus confluentus</i>	T	C	X
Inland Columbia Redband Trout	<i>Oncorhynchus mykiss gairdneri</i>		V	
Pacific Lamprey	<i>Lampetra tridentate</i>		V	
Ferruginous Hawk	<i>Buteo regalis</i>	SC	C	X
Lewis's Woodpecker	<i>Melanerpes lewis</i>	SC	C	X
Loggerhead Shrike	<i>Luanius ludovicianus</i>		V	
Western Bluebird	<i>Sialia mexicana</i>		V	
Pallid Bat	<i>Antrozous pallidus</i>		V	x
Western Toad	<i>Bufo boreas</i>		V	x
Northern Sagebrush Lizard	<i>Sceloporus graciosus</i>		V	X

Table 3. Non-native Wildlife Species Known to Occur on the Lower Deschutes Wildlife Area.

Common Name	Scientific Name	Common Name	Scientific Name
Chukar	<i>Alectoris chukar</i>	European starling	<i>Sturnus vulgaris</i>
Hungarian (Gray) partridge	<i>Perdix perdix</i>	House sparrow	<i>Melospiza melodia</i>
California quail	<i>Callipepla californica</i>	Rock dove	<i>Columba livia</i>
Wild turkey	<i>Meleagris gallopavo</i>	House mouse	<i>Mus musculus</i>
Ring-necked pheasant	<i>Phasianus colchicus</i>	Bullfrog	<i>Rana catesbeiana</i>

Table 4. Wasco and Sherman County List of Noxious Weed Species Known to Occur on the Lower Deschutes Wildlife Area

Common Name	Scientific Name	Common Name	Scientific Name
Field Bindweed	<i>Convolvulus arvensis</i>	Wild Oat	<i>Avena fatua</i>
Cheatgrass Brome	<i>Bromus tectorum</i>	Puncturevine*	<i>Tribulus terrestris</i>
Jointed Goatgrass	<i>Aegilops cylindrica</i>	Cereal Rye*	<i>Secale cereale</i>
Poison Hemlock	<i>Conium maculatum</i>	Rush Skeletonweed*	<i>Chondrilla juncea</i>
Prickly Lettuce	<i>Lactuca serriola</i>	Common Teasel	<i>Dipsacus fullonum</i>
Diffuse Knapweed*	<i>Centaurea diffusa</i>	Canada Thistle*	<i>Cirsium arvense</i>
Russian Knapweed*	<i>Centaurea repens</i>	Russian Thistle*	<i>Salsola kali</i>
Spotted Knapweed*	<i>Centaurea stoebe</i>	Scotch Thistle*	<i>Onopordum acanthium</i>
Medusahead	<i>Taeniatherum caput-medusae</i>	Yellow Star-Thistle*	<i>Centaurea solstitialis</i>
Common Mullein	<i>Verbascum thapsus</i>	Whitetop*	<i>Cardaria draba</i>
Himalayan Blackberry*	<i>Rubus discolor</i>		

* Species known to be present on the LDWA and subject to mechanical, biological and/or chemical control. Species in bold are identified in the Oregon Conservation Strategy.

Monitoring

Annual program activities are in place to monitor wildlife populations, habitat use and other features. Wildlife response to habitat developments is a major objective of most surveys. Data are collected by administrative units and in some cases, specific localities, habitats or vegetative types based upon survey objectives. Population data are used to monitor effectiveness of population management plans, especially for selected big game species.

Recreational use

Monitoring of recreational activities is completed by department, OPRD, and BLM staff. Informal monitoring of public during their visits is also conducted during random contacts during the year. Below are examples of recreational use monitoring activities:

1. Creel Census. Each year from July 1 through October 30, district fish staff conducts creel checks at Heritage Landing on the west side of the mouth of the Deschutes River. Information of species caught, number of hours spent fishing and month of use is gathered on anglers that use the lower 22 miles of the river.
2. Boater Pass information on Segment IV (Macks Canyon to Mouth of Deschutes) of the Deschutes River is gathered by the BLM.

Habitat

Monitoring is an important component of determining if objectives are met or if changes are needed to better provide the desired result. The department has set up an agreement for BLM range technicians to monitor range conditions both on the LDWA and adjacent BLM lands. When budgets allow, transect readings and photo points may be repeated on a five-year cycle. These have been conducted at random intervals since 1993. Several different monitoring techniques will be used on the area including:

1. Ocular Estimates:

This is the most frequently used technique by area personnel. Ocular observations are made year round and cover a broad spectrum of applications. It is relied on most heavily to determine range readiness and proper cattle movement patterns.

2. Photo Points:

BLM range technicians maintain seven photo points on BLM lands adjacent to the LDWA lands along the lower 18 miles of the Deschutes River. Photos are taken during the spring and fall seasons to determine habitat conditions.

3. Range Condition Analysis:

BLM range technicians conduct ten 100-foot nested frequency transects on the lower 18 miles of the Deschutes River (eight on LDWA, one on BLM lands and one on OPRD property).

Big Game

The Dalles (Mid-Columbia) District Wildlife staff surveys and monitors big game numbers and animal condition each year. Deer are classified as to sex and age in December and March. Bighorn sheep are monitored year round and when conditions warrant with emphasis on ewe/lamb ratios and ram numbers. The information gathered from these counts is then used, in addition to herd composition and population survey counts from the rest of the West Biggs Wildlife Management Unit, to help determine herd status relative to management objectives, and to determine the number of tags offered during the next year's hunting seasons.

Other Wildlife

The district wildlife staff conducts annual surveys for waterfowl in January and upland gamebirds in July. The waterfowl count surveys total numbers and species composition. The upland gamebird count surveys species and adult/young ratios to determine hatching success.

Fish

Monitoring is conducted opportunistically and/or as scheduled by department fisheries personnel. Statistical harvest census of steelhead and rainbow trout is annually conducted at Heritage Landing by the Mid-Columbia Fish District from July 1 to October 31. Boat anglers are interviewed after completion of their trip while bank anglers are interviewed on the west side of the river around Heritage Landing and the west side trail. Since 1977 harvest, number of anglers and angler hours has been estimated from Macks Canyon downstream to Heritage Landing.

Aerial fall Chinook redd counts are conducted annually on the lower 100 miles of the Deschutes to aid in monitoring run strength. Two independent counts are typically conducted during the spawning period. The redd counts are used to determine the ratio of redds above Sherars Falls to redds below Sherars Falls. This ratio is used to

estimate the number of spawning fall Chinook below Sherars Falls by expanding a mark-recapture estimate above Sherars Falls.

Wildlife Diseases

Hunter harvested deer are sampled by Mid-Columbia District wildlife staff for chronic wasting disease (CWD) on a random basis as opportunity arises. To date no positive samples have been found.

Grazing

Domestic livestock have grazed the area since the time of Euro-American settlement. Currently the area has one remaining grazing agreement with a rancher for 80 animal unit months (AUMs) using the wildlife area between May 1 and July 31, depending on available forage conditions. Five allotments have been retired as most of the other neighboring landowners no longer raise livestock.

The department prescribes the number of AUMs depending on winter and spring range conditions. OAR 635-008-0040 (Forage Removal from Department Lands) guides the permit process.

Allotments will be monitored and evaluated throughout the grazing season by area personnel. When funding is available, the department contracts with BLM range technicians to conduct forage utilization and record photo points on a rotational basis.

Water Use

Irrigation water is monitored by LDWA staff and usage is annually reported to the Oregon Water Resources Department. Water is delivered through an underground pipe system to water grain fields and tree and shrub plantings. Monitoring is conducted using flow devices at the discharge locations.

Public Use

Monitoring public use (hunting, trapping, fishing, viewing, horseback riding) on the area is conducted to determine if the LDWA is providing the type of wildlife oriented recreational opportunities and experiences desired by the public. Hunting and angling activity surveys include: 1) interviews conducted in the field, at hunting camps, fishing sites, creel checks by department personnel and 2) Non-consumptive use of the area is estimated based on random counts of individuals visiting the wildlife area and yearly BLM boater pass permits issued in Section IV of the Deschutes River.

Cultural Resources

For thousands of years, Native Americans have inhabited the region. Long before Europeans set foot on the North American continent, the three tribes of the Warm Springs Reservation, the Wasco, the Warm Springs, and the Paiute, had developed societies beside the Columbia River, the Cascade Mountains, and other parts of Oregon (CTWS, 2008). In 1855, the Warm Springs and Wasco Tribes entered into a treaty with the United States of America. The two treaty tribes eventually invited the Paiutes to join their government. In 1938, the Warm Springs, Wasco, and Northern Paiute Tribes officially formed a confederacy, established a common government, and adopted a

written constitution. All three tribes have long held ties with either the lower Columbia River and/or the Deschutes and John Day basins (CRITFC 2008, Wikipedia 2008a).

The Deschutes River was originally named the *Riviere des Chutes* or *Riviere aux Chutes*, which was French for *River of the Falls*, during the period of fur trading (Wikipedia 2008b). The waterfall it referred to was Celilo Falls on the Columbia River near the mouth of the Deschutes. (These falls no longer exist, having been inundated by the lake behind The Dalles Dam. The Deschutes River provided a major route to and from the Columbia for Native Americans and later, pioneers on the Oregon Trail.

Euro-American migrants, mostly from eastern North America, began arriving in the early 1800s and by the late 1800s represented the majority of the population (Wikipedia 2008b). During the middle 19th century, the river was a major obstacle for immigrants on the Oregon Trail. The major crossing point on the river was near the mouth in present-day Deschutes River State Recreation Area. Many immigrants camped on the bluff on the west side of the river after making the crossing. The remains of the trail leading up to the top of the bluff are still visible.

In 1910-1911, the Oregon Trunk Railroad, owned by James Hill, laid a line up the west bank of the Deschutes at the same time that Deschutes Railroad owner E. H. Harriman built the east side in a race to extend track up the Deschutes canyon. Hill and Harriman were engaged in a fierce ongoing competition to outdo each other. Gangs of workers blasted rock and dug tunnels along the riverbank, each side striving to win. At Madras only one line could pass through the canyon, so the federal government stepped in to enact the Canyon Act which forced both sides to combine and build only one line. The Oregon Trunk Railroad was the only railroad to make a connection to Bend (Harris 1983). The east side grade which was abandoned in the 1930s is now used as the access road for the LDWA. The Harris Canyon redwood water tower, two boxcars and the last wooden trestle on the river left over from the abandoned railroad are still found on the LDWA.

A homestead was established near the mouth of Harris Canyon in the late 1800s. In the early-mid 1900s a domestic sheep operation occurred near this site. The sheering shed, associated pins and a bunk house remain on site.

Historic resources are often grouped into three types of resources: archaeological, historic, and traditional cultural properties (TCPs) (PGE and CTWS 2003). Archaeological resources are material remains of human life or activities such as Native American tools, flakes, rock shelters, and other objects and artifacts. Historic resources are districts, sites, buildings, structures, or other objects that are associated with American history, such as homestead sites and stone walls. TCPs are sites, buildings, structures, or objects that embody traditional cultural values and include resource areas for fishing, plant gathering, ritual sites; and areas of mythological, symbolic, or historic significance.

No formal cultural surveys have been conducted for archeological, historic and TCP sites. However, it is the intent of this plan to protect and maintain the integrity of historic

properties on the wildlife area. Site specific measures include closure of the road for motorized vehicular use along the eastside of the river with the exception of administrative uses. The department also intends to coordinate with the CTWS and the State Historic Preservation Officer for any sensitive archaeological resources sites discovered on the wildlife area and maintain confidentiality of their locations.

The department is responsible for coordinating with the State Historic Preservation Office (SHPO) on an annual basis, when applying for federal grants for all wildlife areas and through the annual operating plans, to ensure that proposed area management activities comply with State and Federal cultural resource laws. Prior to new ground-disturbing activities within any of the wildlife areas, consultation is sought through the appropriate agencies to protect potential culturally significant sites.

State, federal and tribal laws prohibit the disturbance or removal of cultural resources. Violators are subject to criminal and civil penalties. Cultural resources include but are not limited to foods, weapons, weapon projectiles, tools, structures, pit houses, rock paintings, rock carvings, graves, human skeletal materials, or any portion or piece thereof. Visitors are required to report suspicious activities to the department or Oregon State Police.

Social Environment

Demographics

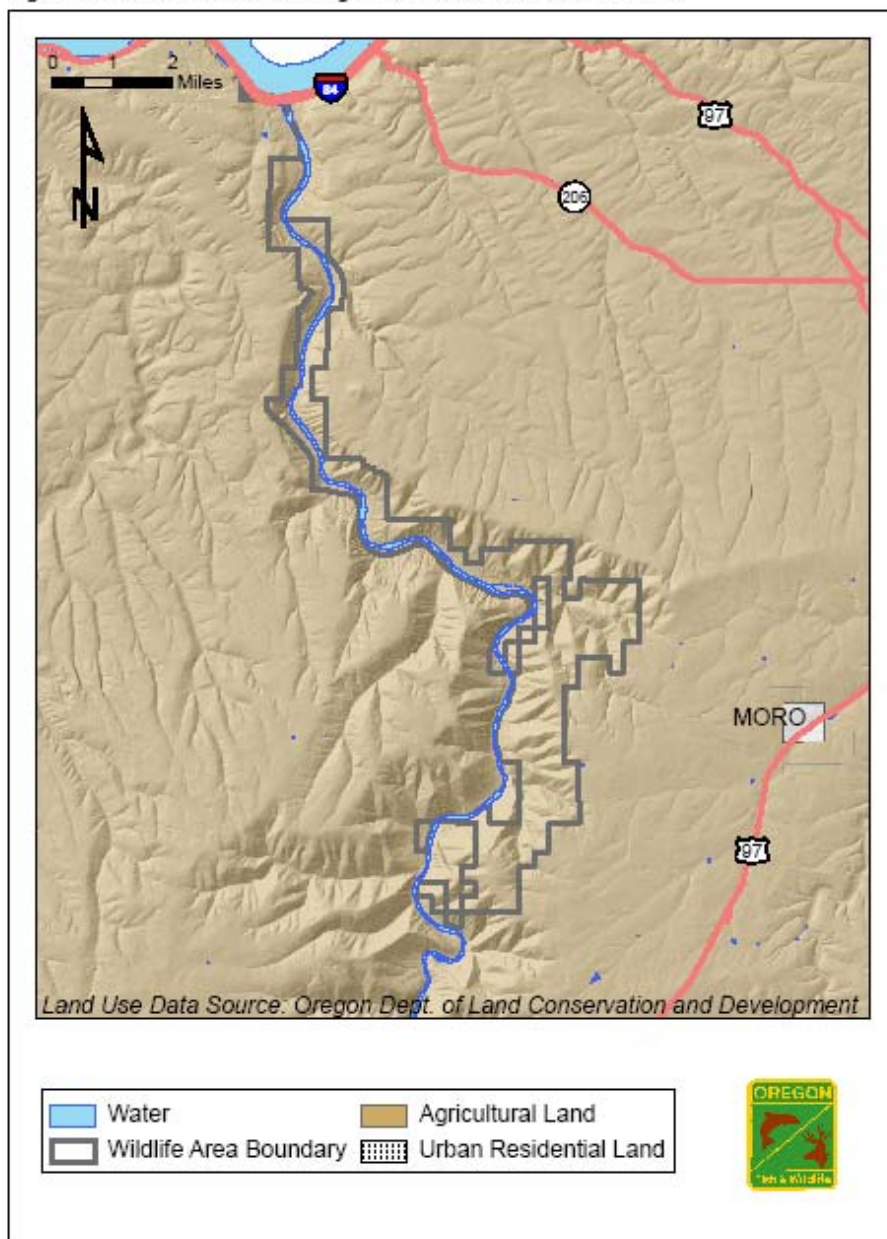
The LDWA is located along the Deschutes River in both Wasco and Sherman Counties. The community of Moro (county seat of Sherman County), Oregon is the nearest town. The LDWA stretches from along the lower 18 miles of the Deschutes River and is bordered by agricultural and rangelands.

According to 2000 census figures, the estimated population of Wasco County was 23,712 and Sherman County was 1,964. The populations of the county seats of The Dalles and Moro were 13,000 and 464 respectively.

Land Use

The LDWA is surrounded by a mixture of private, state and federal lands. The primary land use surrounding the LDWA is for agriculture with grain crops and some livestock grazing (**Figure 3**).

Figure 3 - Land Use Surrounding Lower Deschutes Wildlife Area



Infrastructure

Developments/Facilities

The LDWA is administered out of the Mid-Columbia Wildlife District office in The Dalles. Most of the buildings located on the wildlife area are old historic buildings that are not currently being used (**Table 5**). Two of historic buildings (box car and line shack) burned down during two fire events in the summer of 2008.

There are no developed campgrounds although the OPRD owns and maintains eight outhouses on the area.

The LDWA has approximately 40 miles of boundary and livestock fencing, and 18 miles of roads and trails.

Table 5. Facilities and Developments on the Lower Deschutes Wildlife Area

Development Type	Location
House	Harris Homestead
Pole Barn	Harris Homestead
Sheep Shearing Shed	Harris Homestead
Bunk House	Harris Homestead
Barn	Harris Homestead
Box Cars (2)	Road Mile 6,8
Water Tower	Mouth of Harris Canyon
Bridge	Access Road at Road Mile 5
Roads and Trails (18 miles)	Throughout the Wildlife Area
Guzzler (1)	Deadhorse Seeding

Water Rights

There is one active and two inactive water rights that have been issued by the Oregon Water Resources Department to serve the wildlife area (**Appendix D**). The active water right (4 gallons per minute) of water is taken from Harris Spring to irrigate eight acres of agricultural land.

Easements/Access Agreements

There are two easements in effect on the wildlife area. Easements include power transmission lines and grazing access. **Appendix E** provides details of the various easements within LDWA.

Land Acquisition and Adjustment

It is the policy of the department to only acquire land or interests in lands, including easements and leases, from willing sellers consistent with statutory authority and the department's mission. Acquisitions and adjustments must be for the conservation of fish and wildlife and their habitats and to provide fish and wildlife oriented public use for educational and recreational purposes. Land adjustments would allow for the sale, trade or exchange of land with willing landowners to enable the department to consolidate wildlife area boundaries.

There are three categories of lands that may be considered for acquisition. These include: 1) Significant or unique habitats, especially those beneficial to threatened or endangered sensitive species; 2) Sites, or access to sites that provide wildlife-related recreational opportunities; and, 3) Properties to facilitate the performance of the department's mandated duties (e.g. storage and warehouse).

Appendix F lists the changes in property ownership including the original purchase in 1983.

As other lands adjacent to or within current wildlife area boundaries become available and would enhance LDWA operations or management capabilities, additional acquisitions or land trades will be considered on an individual basis.

Public Use

Public Access

The LDWA is open year-round to the public for wildlife oriented recreational activities. The area is open to foot, boat, horseback and mountain bike use. All roads are closed to motorized vehicles, except for administrative access. Horseback riders are permitted March 1 – June 30 and are only allowed on the east side access road up to the Harris bunkhouse with permits being issued through the OPRD. Public access points are limited to the following: Deschutes River at mouth by sled boat or Mack's Canyon via drift boat, raft, or sled boat; east side access road at mouth of Deschutes through Deschutes State Park; trail along west side of Deschutes through Deschutes State Park; Kloan Road or two access points on Gordon Ridge through BLM property.

Hunting, Trapping and Angling

The LDWA is open to hunting, trapping and angling during authorized seasons. The hours of use of hunting, trapping and angling activity is estimated via patrols by wildlife area personnel and Oregon State Police, creel check at the mouth of the Deschutes or boater pass permits for Section IV of the Deschutes River (**Table 6**). Estimated use by anglers on the LDWA is approximately 10,000 angler days annually.

Wildlife Viewing

An increasing number of people are using the area to observe and photograph wildlife, camp, float, horseback ride, mountain bike and pursue other outdoor recreation opportunities. Wildlife oriented use of the area is estimated based on random counts at wildlife viewing areas, informal interviews of users and information from BLM on boater pass use in Section IV of the Deschutes River (**Table 7**).

Table 6. Estimated Annual Hunting and Angling Use Days on the Lower Deschutes Wildlife Area

Activity	Estimated Annual Use Days
Hunting	
Big Game	500
Waterfowl	100
Upland Game	2,000
Nongame	50
Angling	10,000
Total	12,650

Table 7. Estimated Annual Wildlife Viewing Use Days on the Lower Deschutes Wildlife Area

Activity	Estimated Annual Use Days
Boating	4,000
Hiking	2,000
Biking	2,000
Horseback Riding	75
Total	8,075

Educational/Interpretive

Due to the administrative road closures on the LDWA, the area has had very limited use for educational and interpretive purposes. In 2004, the department hosted the annual Wasco County Bull Tour for approximately 160 people to learn about activities on the LDWA.

Objectives and Strategies

Objectives and Strategies

Objectives are concise statements of what the department wants to achieve, how much the department wants to achieve, when and where to achieve it and who will be responsible for the work. Objectives derive from goals and provide the basis for determining strategies. Strategies describe the specific actions, tools, techniques or a combination of these elements used to meet an objective.

The following objectives and strategies are based on the three goals described on page 2. They identify the management activities and priorities of the Lower Deschutes Wildlife Area Management Plan:

Goal 1: To protect, enhance and restore aquatic and riparian habitats to benefit native fish and wildlife and desired game species.

Objective 1.1: Protect, enhance, and restore approximately 492 acres of freshwater aquatic and 61 acres of riparian habitat.

Rationale

Terrestrial and aquatic species both rely heavily upon healthy riparian ecosystems during various life stages. Prior to 1983 the habitat condition of the affected lands was severely degraded by 80 or more years of heavy grazing. Reduction and regulation of livestock grazing has stabilized or improved the vegetative component of riparian areas thereby reducing potential for runoff into the Deschutes River. Riparian areas have improved through the use of fencing to prevent cattle grazing in these areas. Improved riparian areas provide shading with increased leaf and insect drop which increases nutrient recycling in the lower 18 miles of the Deschutes River. The portion of the Deschutes River which passes through the LDWA has shown the classic narrowing and deepening of the river channel due to the removal of cattle and improved riparian area.

Riparian areas provide habitat for many terrestrial and aquatic species offering forage and cover for birds, small mammals and bats, and provide materials for nesting resident waterfowl, shorebirds and passerines. Department staff actively maintains and enhances riparian systems for high quality instream habitat to benefit resident fish and to improve water quality and quantity. Wildlife area streams support a variety of reptiles, amphibians, mammals, and insects. Aquatic habits on the LDWA are important recreational and educational attractions for the public. The strategies listed below also support many of the aquatic habitat conservation actions described in the Oregon Conservation Strategy.

Strategy 1. Provide stream shade by protecting and enhancing streamside vegetation. Work will entail maintaining riparian fences to exclude livestock, planting native tree and shrub species and developing water gaps, where necessary.

Strategy 2. Control or eliminate noxious weeds to reduce competition with native vegetation by chemical, mechanical or manual methods depending on the most effective means for the particular weed species.

Strategy 3. Work with fish district staff to identify fish habitat improvement projects such as planting riparian vegetation. Seek partnerships with other agencies, sport groups or volunteers for implementation of such projects.

Strategy 4. Partner with other agencies, sport groups or volunteers to place large wood or gravel in the river channel to improve instream habitat for fish.

Goal 2: To protect, enhance and manage upland habitats to benefit native wildlife and desired game species.

Objective 2.1: Protect, enhance, and restore approximately 7,835 acres of mixed sagebrush/grassland and 131 acres of grassland habitats.

Rationale

Upland habitats provide cover and forage for a wide variety of game and nongame species including mule deer, bighorn sheep, fence lizards and red-tailed hawks. These upland habitats, which comprise the vast majority of the LDWA, were not as impacted by historical cattle grazing as the riparian areas were and as such were not in a degraded condition when the property was acquired by the department. Bighorn ewes rely on ample and quality forage near rugged lambing areas in order to provide important nutrition for new lambs. Bighorn rams seek out quality forage on open hillsides, away from the ewe/lamb groups, in order to maintain their body condition during the spring and summer months.

Grassland habitats are improved where feasible to provide quality forage and cover for numerous species. For example, various raptors rely on grassland habitats which harbor prey species of small mammals and reptiles. Maintaining the uplands in good condition also impacts the riparian and aquatic habitats by reducing sediment deposition into these areas. Strategies employed by LDWA staff also support upland habitat conservation actions described in the OCS.

Strategy 1. Maintain and enhance native bunchgrass communities. This can be accomplished through prescribed burning, seeding, mowing and herbicide use to address weed infestations.

Strategy 2. Continue to delineate areas suitable for the re-establishment of native grasses and forbs through re-seeding projects.

Strategy 3. Enhance and protect upland shrub habitats through the planting of native shrubs and trees.

Strategy 4. Develop an integrated weed management plan for these habitat types.

Strategy 5. Partner with Oregon Department of Forestry to provide training for WA staff to prevent fires. Develop work schedules to limit field work during high fire conditions.

Strategy 6. Coordinate contracting, roles and responsibilities of fire fighting activities with BLM, Oregon Department of Forestry, Sherman County and Columbia Rural Fire Protection district.

Objective 2.2: Enhance and manage approximately 7 acres of agricultural upland habitats.

Rationale

The annual planting of wildlife forage crops on historically farmed ground can provide valuable supplemental feed for various wildlife species including voles, neo tropical migrant songbirds, geese and mule deer. Historically a beardless variety of spring

barley has been planted. Due to the amount of broadleaf weed species that need to be managed in these fields, cereal grains are the most applicable crop species to use for wildlife benefit. Other crop species that require less intensive management will also be considered. Approximately five acres can be irrigated utilizing the spring at Harris Canyon.

Strategy 1. Continue to plant annual forage crops and when feasible; seek new varieties of annual, perennial or shrub species which provide a diversity of forage and cover.

Strategy 2. Maintain farm implements and related infrastructure to conduct agricultural activities.

Strategy 3. Actively monitor, evaluate and treat weed infestations.

Strategy 4. Develop an integrated weed management plan that includes the planted forage crop areas.

Goal 3: To provide and promote fish and wildlife oriented recreational and educational opportunities to the public which are compatible with Goal 1.

Objective 3.1: Provide approximately 12,000 hunting and angling use days annually.

Rationale

The Deschutes River is nationally known for summer steelhead and trout angling. Maintaining these fishing opportunities is important to the anglers and local economies. The LDWA is funded entirely by hunter and angler dollars through the Federal Aid to Wildlife Restoration (Pittman-Robertson) and Sport Fish Restoration (Dingell-Johnson) Acts (75%) and state hunting and angling license receipts (25%). The wildlife area is a common destination for hunters and anglers. The department staff is committed to providing fish and wildlife-oriented recreational opportunities for the citizens of Oregon. Department staff will continue to improve non-motorized access and opportunities by providing quality fish and wildlife habitat and information on the wildlife area. Usage will be monitored on the area to make sure all rules and regulations are followed.

Strategy 1. Maintain east side access road to provide non-motorized access (except for administrative uses) to 18 miles of the lower Deschutes River.

Strategy 2. To improve fishing access, control invasive plant species (i.e. Himalayan blackberries) that take over riparian areas and impede shore access.

Strategy 3. Maintain 18 miles of roads, trails, signs, fences, and gates to provide access and facilities for hunting, trapping and angling use.

Strategy 4. Annually monitor hunting and angling use, via creel checks, OSP/volunteer hunter checks and boater use passes.

Objective 3.2: Provide approximately 8,000 wildlife viewing, education and interpretation use days annually.

Rationale

Wildlife-oriented and education activities constitute a significant portion of the use on the LDWA. The LDWA provides many outdoor opportunities within a two hour drive from Bend and Portland. The wildlife area and neighboring communities, especially The Dalles and Biggs Junction, experience an increased amount of use on holidays and weekends.

The LDWA has structures associated with a long history of railroad development, homesteading, farming and sheep grazing. The buildings date as far back as the Harris Homestead which was built in the late 1800s. The buildings are in various stages of wear. The Harris House has deteriorated past the point of repair.

Department staff will seek to expand opportunities for interpretation and environmental education that will foster visitors' appreciation, understanding, and stewardship of the wildlife area's fish and wildlife species and their associated habitats.

Strategy 1. Manage wildlife-oriented recreational use consistent with the biological needs of wildlife and the wildlife area's hunting program.

Strategy 2. Prioritize and catalog potential inventory, monitoring, habitat restoration, and recreation projects for educators and volunteer groups interested in using the wildlife area as an outdoor classroom and volunteer projects.

Strategy 3. Continue to provide access and area information to the public via brochures, maps dispensed at area kiosks hunting regulation booklets and posting signs.

Strategy 4. Continue to educate river users on ways to reduce impacts to riverside camping and recreation through personnel contact while in the field.

Strategy 5. Protect historical sites such as the Harris Homestead and water tower by limiting access to non-motorized uses and provide interpretive signage.

Strategy 6. Develop and/or expand internship programs with colleges and universities to support educational opportunities as well as department management, inventory, and monitoring needs.

Strategy 7. Increase the level of wildlife area related information through department web page postings, weekly recreational reports, local media outlets, brochures, maps, and regulations.

Strategy 8. Maintain existing public facilities during the non-hunting period to provide recreational opportunities for the non-hunting public.

Strategy 9. Explore the feasibility of expanding the existing boater use pass to generate funds to enable staff to protect resources (i.e. restore riparian habitat impacted by dispersed camping sites).

Plan Implementation

Funding

Since its inception in 1983, funding for the operation and maintenance of the LDWA has been accomplished through an annual federal grant under the Federal Aid to Wildlife Restoration (WR) and Sport Fish Restoration (SFR) Programs. These programs were created with the passage of the Pittman- Robertson (PR) Act in 1937 and the Dingell-Johnson (DJ) Act in 1950. The PR and SFR Acts authorize the U.S. Fish and Wildlife Service to cooperate with the states, through their respective state fish and wildlife departments, to fund wildlife and fish restoration projects. Eligible types of projects include restoration, conservation, management, and enhancement of wild birds, wild mammals and their habitats, and providing for public use and benefit from these resources.

Funding for WR and SFR is derived from a federal excise tax on the sale of firearms, ammunition, archery equipment, sport fishing equipment and electric motors. Funding is then apportioned to states based on a mathematical formula of area of the state in square miles (50%) and total number of hunting licenses sold annually (50%). Under the program no state may receive more than 5%, or less than 0.5%, of the total money available.

To be eligible, states must have assented to the provisions of the PR and SFR Act and passed laws for the conservation of wildlife that include a prohibition against the diversion of license fees paid by hunters for any other purpose than the administration of the state fish and wildlife department. Another major requirement is that states have to contribute up to 25% of the total grant cost since federal participation is limited to 75% of eligible costs incurred under a grant. The department provides its 25% cost share from annual hunting license and tag revenues.

Over the past five years, funding for the operation and maintenance of the LDWA has averaged approximately \$40,000 annually with 70% of the federal contribution funded by PR and 30% funded through SFR. To implement many of the management actions and achieve the objectives and goals of this management plan, the department will need additional funding and staff to undertake the following types of projects: upgrades of historical facilities and species and habitat monitoring.

Staffing/Organization

In total, the department manages 16 major wildlife areas statewide. The wildlife areas encompass approximately 200,000 acres and are found in all four department administrative regions; LDWA is located in the High Desert Region.

The LDWA is currently staffed by one seven month seasonal technician. The Mid-Columbia District Wildlife Biologist in The Dalles oversees the budget and directs the daily duties of the seasonal technician.

Compliance Requirements

This management plan was developed to comply with all Federal and State laws (ORSs), Administrative Rules (OARs), and department policies. Full implementation of all components of this plan will require compliance with applicable laws, regulations, rules, and policies (**Appendix G**).

Most of the guiding regulations complement the mission of the LDWA. However, the requirements of some regulations may limit management options in a variety of ways. While the intent of the regulations is generally resource protection, the cost of compliance through significant research and reporting is often prohibitive and precludes action, including some habitat enhancement, on the LDWA.

Partnerships

A number of other public agencies and private sportsman's groups assist with management activities on or adjacent to the LDWA. The following groups have contributed significant financial support and manual labor to the management of habitat and wildlife on the LDWA:

- Oregon Foundation for North America Wild Sheep
 - Weed Control
 - Purchase Grass Seed
 - Bighorn Sheep Research
- Mule Deer Foundation
 - Purchase Grass Seed
 - Purchase Shrubs and Irrigation Supplies
 - Fence Construction
- Oregon Hunters Association
 - Guzzler Installation
 - Bighorn Sheep Research
- Oregon Trout
 - Weed Control
 - Riparian Plantings
- BLM
 - Co-mingled lands and fire protection
- Sherman County and Columbia RFPD
 - Fire fighting

These partners play an important role helping the department achieve its mission and the LDWA goals. The department will continue to rely on these and other partners in the future to help implement this plan and provide input for future updates. This plan identifies projects that provide new opportunities for existing or new partners. The department welcomes and encourages more public participation in the administration of the wildlife area.

12/22/2008

Adaptive Management

This plan provides for adaptive management of the wildlife area. Adaptive management is a flexible approach to long-term management of resources that is directed by the results of ongoing monitoring activities and latest data. Management techniques and strategies are regularly evaluated in light of monitoring results, new scientific understanding, and other new information. These periodic evaluations are used over time to adapt both management techniques and strategies to better achieve the area goals.

Monitoring is an essential component of adaptive management in general, and of this plan in particular; specific monitoring strategies have been integrated into the goals and objectives described in this plan whenever possible. Where possible, habitat management activities will be monitored to assess whether the desired effects on wildlife and habitat components have been achieved.

Plan Amendment and Revision

Wildlife area management plans are meant to evolve with each individual area, and as such each plan will be formally revisited after five years and updated every ten years. In the meantime, however, the department will be reviewing and updating this plan periodically (at least every five years) based on the results of the adaptive management program. This plan will also be informally reviewed by area staff while preparing annual work plans. It may also be reviewed during routine inspections or programmatic evaluations. Results of any or all of these reviews may indicate a need to modify the plan. The goals and objectives described in this plan will not change until they are re-evaluated as part of the formal plan revision process. However, the strategies may be revised to better address changing circumstances or due to increased knowledge of the resources on the area. If changes are required, the level of public involvement and associated compliance requirements will be determined by the department.

References

- Bureau of Land Management (BLM), Bureau of Indian Affairs, Confederated Tribes of Warm Springs Reservation, Oregon State Parks and Recreation Department, ODFW, Oregon State Marine Board, Oregon State Police, Deschutes River Management Committee, Wasco, Sherman and Jefferson counties, and City of Maupin. 1993. *Lower Deschutes River Management Plan and Environmental Impact Statement – Volume I. A joint river management plan, final.* January 1993.
- Confederated Tribes of Warm Springs (CTWS). 1999-2008. website: Tribal community: history and culture. www.warmsprings.com
- Columbia River Intertribal Fish Commission (CRITFC). 2008. The Confederated Tribes of Warm Springs Reservation of Oregon. Website: www.critfc.org/text/warmsprings.html.
- Green, G. L. 1982. *Soil survey of Wasco County, Oregon, northern part.* USDA Soil Conservation Service.
- Harris, B. 1983. *The Wasco County History Book.* The Dalles, Oregon.
- Macdonald, G. D. 1999. *Soil survey of Sherman County, Oregon.* U.S.D.A. Soil Conservation Service.
- Miller, C. 1999. *Birds of the Lower Deschutes River.* Oregon Department of Fish and Wildlife, The Dalles, Oregon.
- ODFW. 2006. *Oregon Conservation Strategy.* Oregon Department of Fish and Wildlife, Salem, Oregon.
- ODFW, 2008. *Oregon Department of Fish and Wildlife Sensitive Species List.* Oregon Department of Fish and Wildlife, Salem, Oregon. Available at: http://www.dfw.state.or.us/wildlife/diversity/species/sensitive_species.asp
- Portland General Electric (PGE) and Confederated Tribes of Warm Springs (CTWS). 2003. *Cultural Resources Management Plan, final.* Pelton Round Butte Hydroelectric Project, FERC Project No. 2030. Madras, Oregon.
- Taylor, G.H., and C. Hannan. 1999. *The climate of Oregon: from rain forest to desert.* Oregon State University Press, Corvallis, Oregon.
- Wikipedia(a). 2008. Warm Springs Indian Reservation. Website: www.wikipedia.org/wiki/warm_springs_Indian_Reservation.
- Wikipedia(b). 2008. Deschutes River. Website: www.wikipedia.org/wiki/Deschutes_River.

Appendices

Appendix A. Native Plant Species Known to Occur on the Lower Deschutes Wildlife Area.

Conifer trees

Western Juniper (*Juniperus occidentalis*)
Ponderosa Pine (*Pinus ponderosa*)

Deciduous Trees and Shrubs

White Alder (*Alnus rhombifolia*)
Blue Elderberry (*Sambucus glauca*)
Black Cottonwood (*Populus trichocarpa*)
Willow (*Salix spp*)
Hackberry (*Celtis reticulata*)
Wild Rose (*Rosa spp*)
Smooth Sumac (*Rhus glabra*)
Blackcap (*Rubus leucodermis*)
Red-Osier Dogwood (*Cornus stolonifera*)
Pacific Poison Oak (*Toxicodendron diversilobum*)

Common Chokecherry (*Prunus virginiana*)
Antelope Bitterbrush (*Purshia tridentata*)
Mockorange (*Philadelphus lewisii*)
Ocean-spray (*Holodiscus discolor*)
Grey Rabbitbrush (*Chrysothamnus nauseosus*)
Dragon Wormwood /Taragon Sagebrush
(*Artemisia dracunculus*)
Big Sagebrush (*Artemisia tridentata*)
Western Wormwood (*Artemisia ludoviciana*)
Scabland Sagebrush (*Artemisia rigida*)

Grasses and Sedges

Idaho Fescue (*Festuca idahoensis*)
Bluebunch Wheatgrass (*Pseudoroegneria spicata*)
Saltgrass (*Distichlis spicata*)
Bottlebrush Squirreltail (*Elymus elymoides*)
Common Cattail (*Typha latifolia*)

Basin Wildrye (*Leymus cinereus*)
Rush (*Juncus spp*)
Sedge (*Carex spp*)
Bottlebrush Squirreltail (*Sitanion hystrix*)
Sandberg Bluegrass (*Poa secunda*)

Legumes

Milkvetch (*Astragalus spp*)
Lupine (*Lupinus spp*)

Forbs

Wild onion (*Allium acuminatum*)
Phlox (*Phlox spp*)
Columbine (*Aquilegia spp.*)
Common Cattail (*Typha latifolia*)
Dagger pod (*Phoenicaulis cheiranthoides*)
Bladder pod (*Lesquerella douglasii*)
Blazing Star (*Mentzelia laevicaulis*)
Paintbrush (*Castilleja spp*)
Pale Wallflower (*Erysimum occidentale*)
Nettle (*Urtica spp*)
Common Mullein (*Verbascum thapsus*)
Field Mint (*Mentha arvensis*)

Desert Parsley (*Lomatium spp*)
Rigid Fiddleneck (*Amsinckia retrorsa*)
Heart-leaf Buckwheat (*Erigonum compositum*)
Upland Larkspur (*Delphinium nuttallianum*)
Thyme Buckwheat (*Eriogonum thymoides*)
Yellow Bell (*Fritillaria pudica*)
Late Goldenrod (*Solidago gigantea*)
Biscuitroot (*Lomatium spp*)
Wild Cucumber (*Echinocystis oregana*)
Grass Widow (*Sisyrinchium douglasii*)
Shooting Star (*Dodecatgeon pauciflorum*)
Clematis (*Clematis spp.*)

Composites

Yarrow (*Achillea millefolium*)
Horseweed (*Conyza canadensis*)
Wavyleaf Thistle (*Cirsium undulatum*)
Blazing Star (*Mentzelia laeviculmis*)

Hoary Aster (*Machaeranthera canescens*)
Arrowleaf Balsamroot (*Balsamorhiza sagittata*)
Curlycup Gumweed (*Grindelia squarrosa*)
Common Cocklebur (*Xanthium strumarium*)

Appendix B. Non-native Plant Species Known to Occur on the Lower Deschutes Wildlife Area.

(*) Indicates species planted for wildlife or aesthetic values

Conifer Trees

Rocky Mtn Juniper (*Juniperus scopulorum*)*
Austrian Pine (*Pinus nigra*)*

Deciduous Trees and Shrubs

Russian Olive (*Elaeagnus angustifolia*)*
Sandcherry (*Prunus besseyi*)*
Black Walnut (*Juglans nigra**)
Tatarian Honeysuckle (*Lonicera tatarica*)*
Silver Buffaloberry (*Shepherdia argentea*)*
Golden Currant (*Ribes aureum*)*
Tree of Heaven (*Ailanthus altissima*)
Fruit Trees (various)*

Black Locust (*Robinia pseudoacacia*)*
Skunkbush Sumac (*Rhus trilobata*)*
Lilac (*Syringa vulgaris*)*
Poplar (*Populus spp.*)*
Siberian Peashrub (*Caragana arborescens*)*
Fourwing Saltbush (*Atriplex canescens*)*
Himalayan Blackberry (*Rubus dicolor*)
Rose (spp)

Grasses

Barley* (*Hordeum spp*)
Intermediate Wheatgrass (*Agropyron
intermedium*)*
Bulbous Bluegrass (*Poa bulbosa*)
Ripgut Brome (*Bromus rigidus*)
Medusahead (*Taeniatherum caput-medusae*)
Wild Oat (*Avena fatua*)
Jointed Goatgrass (*Aegilops cylindrical*)

Sheep fescue (*Festuca ovina*)*
Sherman Big Bluegrass (*Poa ampla*)*

Hare Barley (*Hordeum leporinum*)
Reed Canarygrass (*Phalaris arundinacea*)
Cheatgrass Brome (*Bromus tectorum*)
Cereal Rye (*Secale cereale*)

Legumes

Alfalfa (*Medicago sativa*)*
White Sweetclover (*Melilotus alba*)*

Small Burnet (*Sanguisorba minor*)*
Sainfoin (*Onobrychis viviaefolia*)*

Forbs

Tumble Pigweed (*Amaranthus albus*)
Tumble Mustard (*Sisymbrium altissimum*)
Blue Mustard (*Chorispora tenella*)
Teasel (*Dipsacus sylvestris*)
Whitetop (*Cardaria draba*)
Poison Hemlock (*Conium maculatum*)

Redstem filaree (*Erodium cicutarium*)
Russian Thistle (*Salsola kali*)
Common Mallow (*Malva neglecta*)
Common Mullein (*Verbascum thapsus*)
Field Bindweed (*Convolvulus arvensis*)
Puncturevine (*Tribulus terrestris*)

Composites

Bull Thistle (*Cirsium vulgare*)
Yellow Star-thistle (*Centaurea solstitialis*)
Scotch Thistle (*Onopordum acanthium*)
Canada Thistle (*Cirsium arvense*)
Prickly Lettuce (*Lactuca serriola*)

Spotted Knapweed (*Centaurea stoebe*)
Diffuse Knapweed (*Centaurea diffusa*)
Russian Knapweed (*Centaurea repens*)
Rush Skeletonweed (*Chondrilla juncea*)

Appendix C. Fish and Wildlife Species Known to Occur on the Lower Deschutes Wildlife Area.

The following table and letter keys identify the bird species presence/sightability by season and relative abundances: Occurrence for bird species according to (Miller, C. 1999): C = Common, U = Uncommon, R = Rare, X = Extremely Rare, * = Regular breeder in the area, Bird season symbols: Spring(Sp) = March-May, Summer(Su) = June-August, Fall(F) = September-November, Winter(W) = December-February

Common Name	Scientific Name	Sp	Su	F	W
Pacific Loon	(<i>Gavia pacifica</i>)			X	X
Common Loon	(<i>Gavia immer</i>)	R		R	R
Pied-billed Grebe	(<i>Podilymbus podiceps</i>)	U	R	U	R
Horned Grebe	(<i>Podiceps auritus</i>)			U	U
Red-necked Grebe	(<i>Podiceps grisegena</i>)				X
Eared Grebe	(<i>Podiceps nigricollis</i>)			R	R
Western Grebe	(<i>Aechmophorus occidentalis</i>)	U		U	R
Double-crested Cormorant*	(<i>Phalacrocorax auritus</i>)	C	C	C	C
Great Blue Heron*	(<i>Ardea herodias</i>)	C	C	C	C
Great Egret	(<i>Ardea alba</i>)	X			
Black-crowned Night-Heron	(<i>Nycticorax nycticorax</i>)	X			
Greater White-fronted Goose	(<i>Anser albifrons</i>)	R		R	
Canada Goose*	(<i>Branta canadensis</i>)	C	C	C	C
Tundra Swan	(<i>Cygnus cygnus</i>)		R	R	
Trumpeter Swan	(<i>Cygnus buccinator</i>)		X		
Wood Duck	(<i>Aix sponsa</i>)			X	
Mallard*	(<i>Anas platyrhynchos</i>)	C	C	C	C
Northern Pintail	(<i>Anas acuta</i>)			R	R
Gadwall	(<i>Anas strepera</i>)			R	R
American Wigeon	(<i>Anas americana</i>)	U		C	C
Eurasian Wigeon	(<i>Anas penelope</i>)			X	
Northern Shoveler	(<i>Anas clypeata</i>)	R		R	R
Blue-winged Teal	(<i>Anas discors</i>)	R			
Cinnamon Teal	(<i>Anas cyanoptera</i>)	U			
Green-winged Teal	(<i>Anas crecca</i>)	U		U	U
Ring-necked Duck	(<i>Aythya collaris</i>)	U		U	C
Harlequin Duck	(<i>Histrionicus histrionicus</i>)				X
Redhead	(<i>Aythya americana</i>)	U		U	U
Canvasback	(<i>Aythya valisineria</i>)	R		R	R
Barrow's Goldeneye	(<i>Bucephala islandica</i>)			R	U
Common Goldeneye	(<i>Bucephala clangula</i>)	C		C	C
Bufflehead	(<i>Bucephala albeola</i>)	C		C	C
Greater Scaup	(<i>Aythya marila</i>)				U
Lesser Scaup	(<i>Aythya affinis</i>)	U		U	C
Common Merganser*	(<i>Mergus merganser</i>)	C	C	C	C
Hooded Merganser	(<i>Lophodytes cucullatus</i>)	R		R	U
Red-breasted Merganser	(<i>Mergus serrator</i>)	X			X
Ruddy Duck	(<i>Oxyura jamaicensis</i>)				R
Turkey Vulture	(<i>Cathartes aura</i>)	C	C		
Northern Harrier	(<i>Circus cyaneus</i>)	R			
Cooper's Hawk	(<i>Accipiter cooperii</i>)	R		R	R

12/22/2008

Common Name	Scientific Name	Sp	Su	F	W
Sharp-shinned Hawk	(<i>Accipiter striatus</i>)	R		R	R
Red-tailed Hawk*	(<i>Buteo jamaicensis</i>)	C	C	C	C
Rough-legged Hawk	(<i>Buteo lagopus</i>)				U
Osprey	(<i>Pandion haliaetus</i>)	U	U	U	
Golden Eagle*	(<i>Aquila chrysaetos</i>)	U	U	U	U
Bald Eagle	(<i>Haliaeetus leucocephalus</i>)	R		R	U
American Kestrel*	(<i>Falco sparverius</i>)	C	C	C	U
Prairie Falcon*	(<i>Falco mexicanus</i>)	U	U	U	U
Peregrine Falcon	(<i>Falco peregrinus</i>)	R	R	R	R
Ring-necked Pheasant*	(<i>Phasianus colchicus</i>)	U	U	U	U
Hungarian (Gray) Partridge*	(<i>Perdix perdix</i>)	U	R	R	R
American Coot	(<i>Fulica americana</i>)	C		C	C
Chukar*	(<i>Alectoris chukar</i>)	C	C	C	U
California Quail*	(<i>Callipepla californica</i>)	C	C	C	C
Wild Turkey	(<i>Meleagris gallopavo</i>)	X			
Ring-billed Gull	(<i>Larus delawarensis</i>)	C	C	C	C
California Gull	(<i>Larus californicus</i>)	C	U	C	C
Herring Gull	(<i>Larus argentatus</i>)	R		R	
Thayer's Gull	(<i>Larus thayeri</i>)	R		R	
Glaucous-winged Gull	(<i>Larus glaucescens</i>)	U		U	U
Caspian Tern	(<i>Sterna caspia</i>)	U	U	U	
Killdeer*	(<i>Charadrius vociferus</i>)	C	C	C	U
Spotted Sandpiper*	(<i>Actitis macularia</i>)	R	R	R	
Black-necked Stilt	(<i>Himantopus mexicanus</i>)	U	U	U	
Rock Dove*	(<i>Columba livia</i>)	C	C	C	C
Mourning Dove*	(<i>Zenaida macroura</i>)	C	C	C	U
Western Screech-Owl	(<i>Megascops kennicottii</i>)	U	U	U	U
Great Horned Owl*	(<i>Bubo virginianus</i>)	U	U	U	U
Great Gray Owl	(<i>Strix nebulosa</i>)			X	
Common Nighthawk	(<i>Chordeiles minor</i>)		C		
White-throated Swift	(<i>Aeronautes saxatalis</i>)	R		R	
Vaux's Swift	(<i>Chaetura vauxi</i>)	R		R	
Belted Kingfisher	(<i>Ceryle alcyon</i>)	C	C	C	C
Rufous Hummingbird	(<i>Selasphorus rufus</i>)	R	U		
Northern Flicker	(<i>Colaptes auratus</i>)	C	C	C	C
Lewis's Woodpecker	(<i>Melanerpes lewis</i>)	R	U	U	R
Downy Woodpecker	(<i>Picoides pubescens</i>)	R	R	R	R
Western Wood-pewee	(<i>Contopus sordidulus</i>)		U		
Gray Flycatcher	(<i>Empidonax wrightii</i>)	U	U		
Say's Phoebe*	(<i>Sayornis saya</i>)	U	U		
Western Kingbird	(<i>Tyrannus verticalis</i>)	U	C		
Eastern Kingbird	(<i>Tyrannus tyrannus</i>)		R		
Northern Shrike	(<i>Lanius excubitor</i>)			R	R
Loggerhead Shrike*	(<i>Lanius ludovicianus</i>)	U	U		
Warbling Vireo	(<i>Vireo gilvus</i>)	U	U		
Black-billed Magpie*	(<i>Pica hudsonia</i>)	C	C	C	C
American Crow*	(<i>Corvus brachyrhynchos</i>)	C	C	C	C
Common Raven	(<i>Corvus corax</i>)	C	C	C	C
Horned Lark*	(<i>Eremophila alpestris</i>)	C	C	C	C
Tree Swallow*	(<i>Tachycineta bicolor</i>)	C	C	U	

12/22/2008

Common Name	Scientific Name	Sp	Su	F	W
Violet-green Swallow	(<i>Tachycineta thalassina</i>)	C	C	C	
Northern Rough-winged Swallow	(<i>Stelgidopteryx serripennis</i>)	C	C	U	
Bank Swallow*	(<i>Riparia riparia</i>)	C	C	C	
Barn Swallow*	(<i>Hirundo rustica</i>)	C	C	C	
Cliff Swallow	(<i>Petrochelidon pyrrhonota</i>)	C	C	C	
Black-capped Chickadee*	(<i>Poecile atricapillus</i>)	C	C	C	C
Mountain Chickadee	(<i>Poecile gambeli</i>)	R		R	R
Bushtit*	(<i>Psaltriparus minimus</i>)	C	C	C	C
Bewick's Wren*	(<i>Thryomanes bewickii</i>)	C	C	C	C
House Wren*	(<i>Troglodytes aedon</i>)	C	C	U	
Winter Wren	(<i>Troglodytes troglodytes</i>)				R
Rock Wren*	(<i>Salpinctes obsoletus</i>)	U	U		
Canyon Wren*	(<i>Catherpes mexicanus</i>)	C	C	C	R
Marsh Wren	(<i>Cistothorus palustris</i>)	R		R	
American Dipper	(<i>Cinclus mexicanus</i>)	U	U	U	U
Golden-crowned Kinglet	(<i>Regulus satrapa</i>)			U	U
Ruby-crowned Kinglet	(<i>Regulus calendula</i>)	C		C	U
Mountain Bluebird	(<i>Sialia currucoides</i>)	U		U	
Western Bluebird	(<i>Sialia mexicana</i>)	U		U	
Townsend's Solitaire	(<i>Myadestes townsendi</i>)				R
American Robin*	(<i>Turdus migratorius</i>)	C	C	C	C
American Pipit	(<i>Anthus rubescens</i>)	R		R	
Hermit Thrush	(<i>Catharus guttatus</i>)	R		R	R
Cedar Waxwing	(<i>Bombycilla cedrorum</i>)	U	U	U	U
European Starling*	(<i>Sturnus vulgaris</i>)	C	C	C	C
Orange-crowned Warbler	(<i>Vermivora celata</i>)	U		U	
Yellow Warbler*	(<i>Dendroica petechia</i>)	C	C	U	
Black-throated Gray Warbler	(<i>Dendroica nigrescens</i>)	R			
Palm Warbler	(<i>Dendroica palmarum</i>)				X
Yellow-rumped Warbler	(<i>Dendroica coronata</i>)	C	U	C	U
Common Yellowthroat	(<i>Geothlypis trichas</i>)	R		R	
Wilson's Warbler	(<i>Wilsonia pusilla</i>)	U	U	U	
Western Tanager	(<i>Piranga ludoviciana</i>)	U	U		
Lazuli Bunting*	(<i>Passerina amoena</i>)	U	U	U	
Black-headed Grosbeak	(<i>Pheucticus melanocephalus</i>)	U	U		
Spotted Towhee*	(<i>Pipilo maculatus</i>)	C	C	C	U
House Sparrow*	(<i>Passer domesticus</i>)	C	C	C	C
Song Sparrow*	(<i>Melospiza melodia</i>)	C	C	C	C
Lincoln's Sparrow	(<i>Melospiza lincolni</i>)	R		R	
Dark-eyed Junco*	(<i>Junco hyemalis</i>)	C	C	U	U
White-crowned Sparrow	(<i>Zonotrichia leucophrys</i>)	C		C	C
Golden-crowned Sparrow	(<i>Zonotrichia atricapilla</i>)	U		U	U
Harris' Sparrow	(<i>Zonotrichia querula</i>)				X
Bullock's Oriole*	(<i>Icterus bullockii</i>)	C	C		
Western Meadowlark*	(<i>Sturnella neglecta</i>)	C	C	C	U
Red-Winged Blackbird*	(<i>Agelaius phoeniceus</i>)	C	C	C	U
Brewer's Blackbird*	(<i>Euphagus cyanocephalus</i>)	C	C	C	U
Brown-headed Cowbird*	(<i>Molothrus ater</i>)	C	C	C	
House Finch*	(<i>Carpodacus mexicanus</i>)	C	C	C	C

12/22/2008

Common Name	Scientific Name	Sp	Su	F	W
American Goldfinch*	(<i>Carduelis tristis</i>)	C	C	U	U
Total Birds: 141					

Common Name	Scientific Name
Fish	
Redband Trout	(<i>Oncorhynchus mykiss rideus</i>)
Steelhead	(<i>Oncorhynchus mykiss</i>)
Chinook Salmon	(<i>Oncorhynchus tshawytscha</i>)
Coho Salmon	(<i>Oncorhynchus kisutch</i>)
Sockeye Salmon	(<i>Oncorhynchus nerka</i>)
Bull Trout	(<i>Salvelinus confluentus</i>)
Mountain Whitefish	(<i>Prosopium williamsoni</i>)
Northern Pikeminnow	(<i>Ptychocheilus oregonensis</i>)
Chiselmouth	(<i>Acrocheilus alutaceus</i>)
Largescale Sucker	(<i>Catostomus macrocheilus</i>)
Peamouth	(<i>Mylocheilus caurinus</i>)
Redside Shiner	(<i>Richardsonius balteatus</i>)
Dace	(<i>Rhinichthys spp.</i>)
Sculpin	(<i>Cottus spp.</i>)
Pacific Lamprey	(<i>Lampetra tridentata</i>)
Total Fish: 15	

Mammals	
Little Brown Myotis	(<i>Myotis lucifugus</i>)
Townsend's Big-eared Bat	(<i>Plecotus townsendii</i>)
Pallid Bat	(<i>Antrozous pallidus</i>)
White-tailed Jackrabbit	(<i>Lepus townsendii</i>)
Mountain Cottontail	<i>Sylvilagus nuttallii</i>
California Ground Squirrel	(<i>Spermophilus beecheyi</i>)
Northern Pocket Gopher	(<i>Thomomys talpoides</i>)
Vagrant Shrew	(<i>Sorex vagrans</i>)
American Beaver	(<i>Castor canadensis</i>)
Great Basin Pocket Mouse	(<i>Perognathus parvus</i>)
Deer Mouse	(<i>Peromyscus maniculatus</i>)
House Mouse	<i>Mus musculus</i>
Bushy-tailed Woodrat	(<i>Neotoma cinerea</i>)
Montane Vole	(<i>Microtus montanus</i>)
Long-tailed Vole	(<i>Microtus longicaudus</i>)
Sagebrush Vole	(<i>Lagurus curtatus</i>)
Muskrat	(<i>Ondatra zibethicus</i>)
North American Porcupine	(<i>Erethizon dorsatum</i>)
Coyote	(<i>Canis latrans</i>)
Black Bear	(<i>Ursus americanus</i>)
Raccoon	(<i>Procyon lotor</i>)
River Otter	(<i>Lontra canadensis</i>)
Long-tailed Weasel	(<i>Mustela frenata</i>)
Mink	(<i>Mustela vison</i>)
American Badger	(<i>Taxidea taxus</i>)
Striped Skunk	(<i>Mephitis mephitis</i>)

12/22/2008

Common Name	Scientific Name
Cougar	<i>(Puma concolor)</i>
Bobcat	<i>(Lynx rufus)</i>
Rocky Mountain Elk	<i>(Cervus elaphus nelsoni)</i>
Mule Deer	<i>(Odocoileus hemionus hemionus)</i>
California Bighorn Sheep	<i>(Ovis canadensis californiana)</i>
Total Mammals: 31	

Amphibians and Reptiles

Long-toed Salamander	<i>(Ambystoma macrodactylum)</i>
Rough-skinned Newt	<i>(Taricha granulose)</i>
Western Toad	<i>(Bufo boreas)</i>
Pacific Treefrog	<i>(Pseudacris regilla)</i>
Bull Frog	<i>(Rana catesbeiana)</i>
Northern Sagebrush Lizard	<i>(Sceloporus graciosus)</i>
Southern Alligator Lizard	<i>(Elgaria multicarinata)</i>
Western Fence Lizard	<i>(Sceloporus occidentalis)</i>
Rubber Boa	<i>(Charina bottae)</i>
Racer	<i>(Coluber constrictor)</i>
Gopher Snake	<i>(Pituophis catenifer)</i>
Western Terrestrial Garter Snake	<i>(Thamnophis elegans)</i>
Common Garter Snake	<i>(Thamnophis sirtalis)</i>
Western Rattlesnake	<i>(Crotalus viridis)</i>
Total Amphibians & Reptiles: 14	

**Appendix D. Water Rights Held by the Department
on the Lower Deschutes Wildlife Area**

Water Source	Priority	Acres	Cert. Number	Type	Rate	Land Ownership At Source
1. Shotgun Canyon Cr.	1911	N/A	615	Railroad	0.08 cfs	ODFW
2. Deschutes River	1911	N/A	816	Domestic Locomotive	0.40 cfs	ODFW
3. Harris Canyon Spring	1991	8.0	S 51365	Irrigation	4.0 gpm	Bureau of Land Management

Appendix E. Easements Held on the Lower Deschutes Area

Grantor	Purpose	Beneficiary
ODFW	Transmission Line Easement	Bonneville Power Administration
ODFW	Access Roads	Bonneville Power Administration
ODFW	Agricultural, Horticultural and Grazing Purposes	Kortge

Easements and Rights of Way:

When the department acquired the property in 1983 and 1986 the following Easements and Rights of Way came with the property.

Transmission Line Easement: A perpetual easement and right to the Bonneville Power Administration to enter and erect, maintain, repair, operate and patrol one line of electric power transmission structures and appurtenant signal lines, including the right to erect such poles, transmission structures, wires, cables and appurtenances as are necessary in, over, upon and across the following land:

<u>Location</u>	<u>Date Entered</u>
T1N, R15E, Sec 23 and 25	March 31, 1958
T1S, R16E, Sec 29	November 30, 1966
T1N, R15E, Sec 25	October 19, 1967
T2N, R15E, Sec 35	October 28, 1968

BPA transmission lines also cross the LDWA at:
T1S, R16E, Sec 3, 9,10, 21, 28 & 32

Other Easements and/or Leases:

When the OWHF purchased the property from the Oregon Land Company, the right to use a portion of the property for agricultural, horticultural or grazing purposes stayed with the property in those parcels of land in lot 8 and in the Northwest quarter of the Southwest quarter, and in lots 6 and 8, in T1N, R15E, Sec. 25; also in lots 2, 3, 4, and in the Northeast quarter of the southeast quarter of T1N, R15E, Sec. 36; also lots 5, 6, 7, 8, 9 in T1N, R16E, Sec. 31 lying between the Deschutes River and the Right-of-way of the Oregon Trunk Railway. This is from warranty deed #17280 filed for record on November 8, 1923.

**Appendix F. Land Acquisitions and Transfers
Involving the Lower Deschutes Wildlife Area**

Date	Acres	Action	Cooperator
1983	2,758	Acquired from	Oregon Wildlife Heritage Foundation
1986	5,158	Acquired from	Oregon Wildlife Heritage Foundation
2008	7,916		Department Owned Lands

Appendix G. Legal Obligations Influencing Management of the Lower Deschutes Wildlife Area

Federal Laws

Federal Aid in Wildlife Restoration Act
Pittman-Robertson Act of 1937
Dingell-Johnson Act of 1950
The Endangered Species Act of 1973, as amended
National Historic Preservation Act
National Environmental Policy Act
Americans with Disabilities Act
Federal Wild and Scenic River 1988

Oregon Revised Statutes

ORS 390.826 Scenic Waterway
ORS 496.012 Oregon's Wildlife Policy
ORS 496.138 General Duties and Powers; Rulemaking Authority
ORS 496.146 Additional Powers of the Commission
ORS 496.162 Establishing seasons, amounts and manner of taking wildlife; rules
ORS 496.992 Penalties

Oregon Administrative Rules

Division 008 - Department of Fish and Wildlife Lands

635-008-0015 Agreements to Restrict Motor-propelled Vehicles
635-008-0040 Forage Removal from State Lands
635-008-0050 Fish and Wildlife Commission to Post and Enforce Rules
635-008-0123 Lower Deschutes Wildlife Area

Division 011 - Statewide Angling Regulations

635-011-0050 Procedure of Promulgation of Angling Regulations
635-011-0100 General Rule

Division 50 - Furbearer and Unprotected Mammal Regulations

635-050-0015 - Purpose
635-050-0045 - General Furbearer Regulations
635-050-0020 - Areas Open to Hunting or Trapping

Division 051 - General Game Bird Regulations

635-051-0000 Purpose and General Information
635-051-0065 State Wildlife Area Regulations

Division 053 - Upland Game Bird Regulations

635-053-0000 Purpose and General Information

12/22/2008

Division 065 - Game Mammal General Seasons and Regulations

635-065-0001 Purpose and General Information

635-065-0625 Regulations on State Wildlife Areas, Refuges and Special Areas