

Exhibit 1. Aerial photo/map of Flight's End property. Property outlined in yellow; Multnomah channel is to the left.



0 0.03 0.06 0.12 0.18 0.24
Miles

Exhibit 2. Aerial photo/map of Sauvie Island Wildlife Area, showing context of Flight's End property and relationship to other conservation parcels.

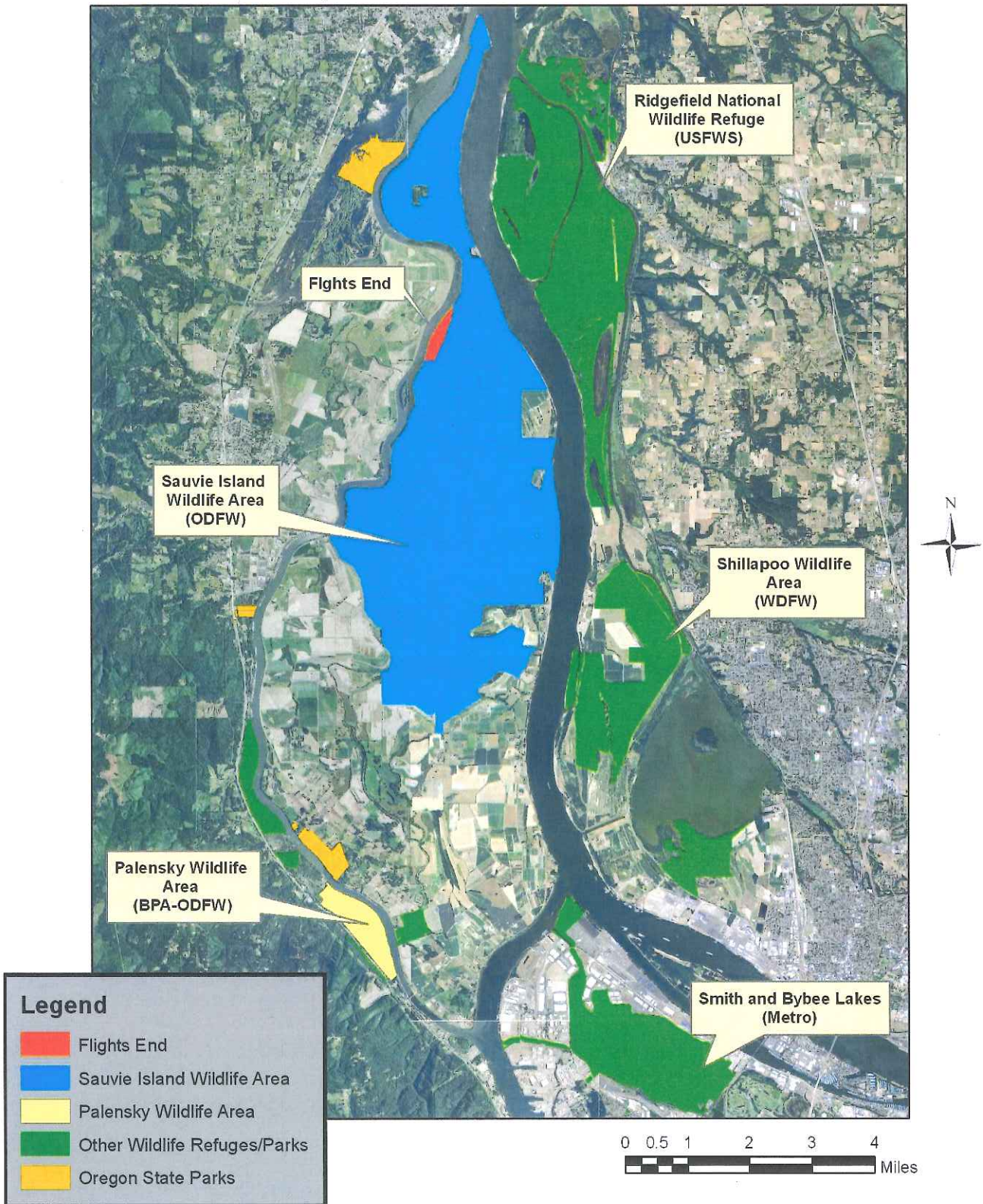


Exhibit 3. Map of the Coyote Creek Property and vicinity.

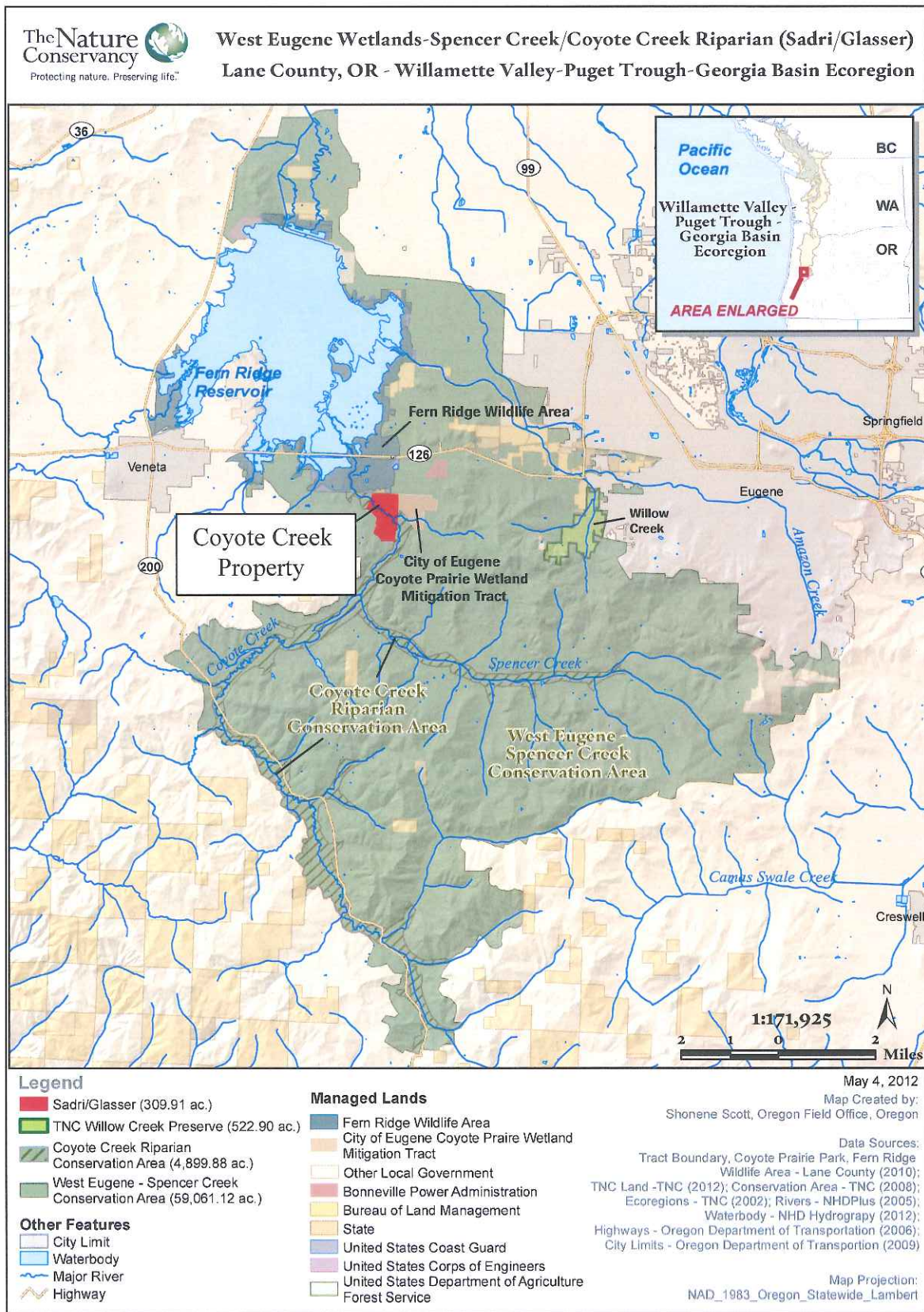


Exhibit 4. Aerial photo/map of the Coyote Creek area.

