



Coyote Creek Acquisition

About the Coyote Creek property:

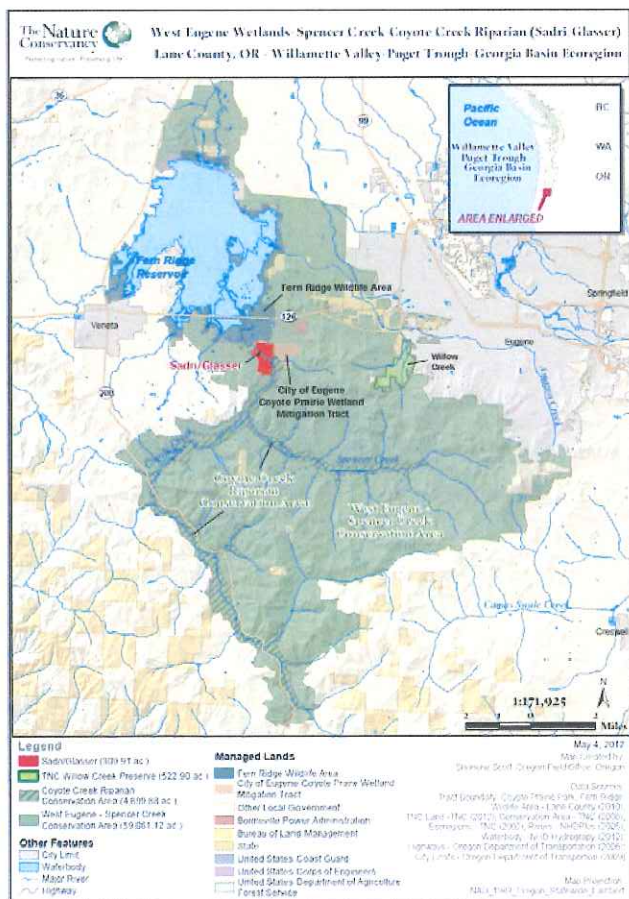
The Coyote Creek property is a 310 acre property located just west of the City of Eugene in Lane County, in the West Eugene Wetlands/Spencer Creek Conservation Opportunity Area (COA). This COA includes the largest remaining wet prairie in the Willamette Valley. Together with the Coyote Creek Riparian COA, this area supports valley bottom wetland, grassland, and riparian habitats with the highest remaining concentration of rare Willamette Valley at-risk endemic species, including the federally Endangered Bradshaw's lomatium (*Lomatium bradshawii*), Willamette daisy (*Erigeron decumbens* var. *decumbens*) and Fender's blue butterfly (*Icaricia icariodes fenderi*), and the federally Threatened Kincaid's lupine (*Lupinus sulphureus* ssp. *kincaidii*). In addition, there are 13 Federal Species of Concern (four plant and nine animal species) in the two conservation areas.

The Nature Conservancy (TNC) purchased the Coyote Creek property in 2012 with the intent of transferring the property to the Oregon Department of Fish and Wildlife (ODFW) if the acquisition is approved. The property has been farmed for grass hay for many years, and during TNC's interim ownership, TNC may continue to lease the property for agricultural use.

ODFW's interest in the Coyote Creek property:

The Coyote Creek acquisition will help conserve 99 acres of riparian forest and 210 acres of restorable wet prairie. The acquisition targets priority species and habitats identified in the Oregon Conservation Strategy, including providing habitat for foraging waterfowl, grassland birds and native cutthroat trout. Upon restoration the property also will provide opportunities for re-introduction of endangered Willamette Valley plant species associated with wet prairie, such as Bradshaw's lomatium and Willamette daisy.

The Coyote Creek property is adjacent to Fern Ridge Wildlife Area. ODFW manages the 5,261 acre Fern Ridge Wildlife Area under a 25-year agreement with the US Army Corps of Engineers, which owns and operates Fern Ridge Reservoir. If the acquisition is approved, ODFW will manage the property in coordination with the Fern Ridge Wildlife Area. Through an agreement with TNC, ODFW will also manage the property until the transfer occurs. Under ODFW ownership, the property would be available for public recreational activities that are consistent with the conservation purposes of the purchase as defined in the management plan to be developed.

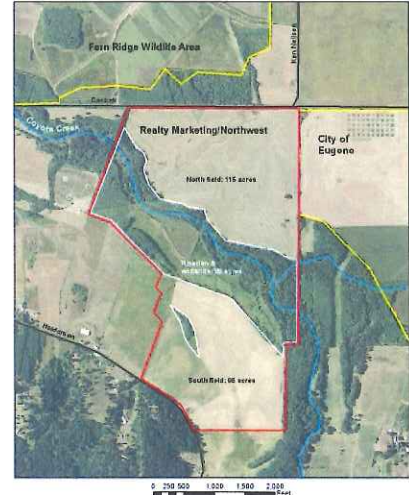


Protecting the Coyote Creek property will also provide connectivity between adjacent protected areas, including the City of Eugene's Coyote Prairie wetland mitigation site and the Fern Ridge Wildlife Area.

Acquisition process and funding:

The property is currently owned by TNC, who purchased the property with the intent of transferring ownership to ODFW if the acquisition is approved. ODFW is currently in the process of reviewing this potential acquisition with stakeholders, members of the public, and other interested parties. After a series of public meetings, ODFW staff will present the potential acquisition, including information gathered through public input, to the Fish and Wildlife Commission for their approval.

The acquisition of this property will be funded through the ODFW Willamette Wildlife Mitigation Program. The funding is provided by Bonneville Power Administration (BPA) through a fifteen year agreement between ODFW and BPA to settle federal wildlife habitat mitigation obligations in the Willamette Valley.



Long-term restoration and management:

ODFW's habitat restoration goals for the site include restoration of the open farm fields to wet prairie for western meadowlark and other grassland bird use, with seasonal use by waterfowl. ODFW will develop a management plan specific to the property that will detail ODFW's planned management and restoration actions. The public will have an opportunity to review and comment on this management plan. With more than 250 acres of hydric soils, restoration of the Coyote Creek property will provide an opportunity to restore a mosaic of vernal pool, wet prairie and riparian forest habitats. Permanent protection of this property will also provide an opportunity to restore wetland hydrology within an existing complex of conservation lands. Planned restoration of the site would result in approximately 211 acres of wet and upland native prairie, 20 acres of riparian forest and shrub and 14 acres of oak woodland. Restoration of the wet prairie could benefit the following species: Nelson's checkermallow, red-legged frogs, western meadow lark, vesper sparrow, and streaked horned lark. Overall benefits to fish and wildlife are expected to increase substantially through restoration efforts at Coyote Creek.

How to get involved:

There are many ways to get involved in this process. You can provide comments at a public meeting and you can contact ODFW at the addresses below. Public comments will be accepted through December 31, 2012. You can also attend the Fish and Wildlife Commission meeting on January 11, 2013 at ODFW headquarters in Salem.

Contact information:

Fern Ridge Wildlife Area

Wayne Morrow – Fern Ridge Wildlife Area Manager
26969 Cantrell Rd
Eugene, OR 97402
wayne.e.morrow@state.or.us
541-936-2591

Willamette Wildlife Mitigation Program

Laura Tesler - Willamette Wildlife Mitigation Staff Biologist
3406 Cherry Ave NE
Salem, OR 97303
laura.tesler@state.or.us
503-947-6086



Flight's End Acquisition



About the Flight's End property:

The Flight's End property is a 100 acre peninsula located at the north end of Sauvie Island in Columbia County, within/adjacent to the Sauvie Island Wildlife Area (SIWA), an 11,543 acre wildlife area owned and managed by the Oregon Department of Fish and Wildlife (ODFW). The property is bordered by Multnomah Channel on the west, Crane Slough on the east and SIWA to the north, south, and east. Flight's End is uniquely situated in proximity to a complex array of wildlife and wetlands-focused management areas including Ridgefield National Wildlife Refuge (USFWS), Shillapoo Wildlife Area (WDFW) in Washington, Deer Island (Columbia Land Trust), Multnomah

Channel wetlands (Metro), Palensky Wildlife Mitigation Area (BPA and ODFW), and Wapato Greenway Access (Oregon State Parks) in Oregon.

The Multnomah Channel has been identified as a priority habitat for restoration of ESA listed salmonid species (Chinook and coho salmon and steelhead). Multnomah Channel is also an important site for public recreation including fishing, boating, and wildlife viewing. Crane Slough borders the east side of the site and is also important habitat for salmon and steelhead as well as numerous species of birds such as bald eagle, great blue heron, great egret and osprey.

Flight's End is currently owned by a private duck hunting club that has been in operation for more than 80 years. The property has been primarily managed for waterfowl hunting. The Flight's End landowners were offering the property for sale and inquired if ODFW would be interested in acquiring and managing the property.



ODFW's interest in the Flight's End property:

ODFW has a strong interest in acquiring the Flight's End property as it offers a unique opportunity to protect and conserve habitats to benefit a variety of fish and wildlife species. As an "in-holding" to the existing Wildlife Area, purchase would allow ODFW to incorporate the site into the SIWA for efficient long-term management and protection. Under ODFW ownership, the property would be available for public recreational activities that are consistent with the conservation purposes of the purchase as defined in the management plan to be developed.



Though formal surveys have not yet been conducted, a diversity of wildlife species has been documented at the site including several Oregon Conservation Strategy priority status species: Northern red-legged frog and willow flycatcher. Additional wildlife species that use the habitats on site include migrating waterfowl, neotropical migratory songbirds, raptors, amphibians, wading birds, and mammals such as black-tailed deer and river otters.

Acquisition process and funding:

ODFW is currently in the process of reviewing this potential acquisition with stakeholders, members of the public, and other interested parties. After seeking public input, ODFW staff will present the potential acquisition, including information gathered through public input, to the Fish and Wildlife Commission for their approval.

The acquisition of this property will be funded primarily through ODFW's Willamette Wildlife Mitigation Program. The funding is provided by Bonneville Power Administration (BPA) through a fifteen year agreement between ODFW and BPA to settle federal wildlife habitat mitigation obligations in the Willamette Valley. Additional funding will be provided from the ODFW State Wildlife Fund. No General Fund tax revenues will be used in the purchase of this property.

Long-term restoration and management:

If approved, ODFW's habitat restoration goals for the site will include maintaining existing high quality habitats and restoring existing cropland areas to grassland and wetland plant communities. ODFW will develop a management plan specific to the property that will detail ODFW's planned management and restoration actions. The public will have an opportunity to review and comment on this management plan. Restoration activities will be based on topography, river levels, elevations and the historic habitat conditions of the site. A key component of habitat restoration at Flight's End will be the use of moist soil management to replicate conditions associated with historic hydrologic regimes on the lower Columbia River. Overall benefits to fish and wildlife are expected to increase substantially through restoration efforts at Flight's End.

How to get involved:

There are many ways to get involved in this process. You can provide comments at a public meeting and you can contact ODFW at the addresses below. Public comments will be accepted through December 31, 2012. You can also attend the Fish and Wildlife Commission meeting on January 11, 2013 at the ODFW headquarters in Salem.

Contact information:

Sauvie Island Wildlife Area

Mark Nebeker – SIWA Manager

18330 NW Sauvie Island Rd

Portland, OR 97231

mark.a.nebeker@state.or.us

503-621-3488 x225

Willamette Wildlife Mitigation Program

Laura Tesler - Willamette Wildlife Mitigation Staff Biologist

3406 Cherry Ave NE

Salem, OR 97303

laura.tesler@state.or.us

503-947-6086

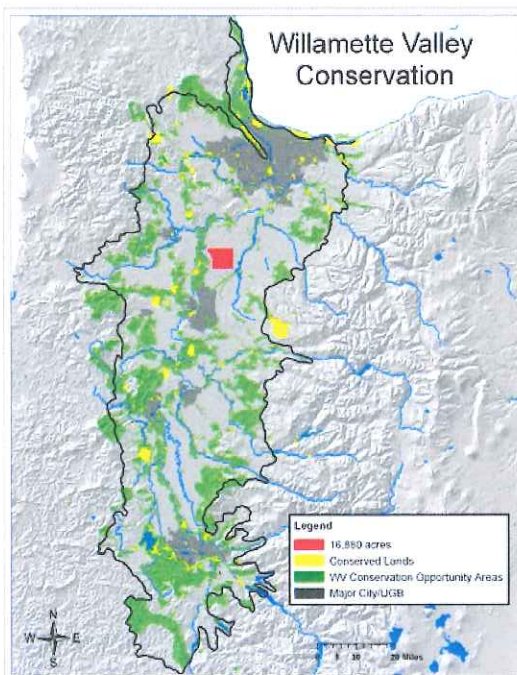


The Willamette Wildlife Mitigation Program



Background:

In 2010, the State of Oregon and Bonneville Power Administration (BPA) entered into a fifteen year agreement to permanently settle wildlife mitigation responsibilities for the federal Willamette River Basin Flood Control and Hydroelectric Project in the Willamette subbasin. The Willamette Project includes 13 multi-purpose dams and reservoirs as part of the Federal Columbia River Power System. The Parties to the Willamette River Basin Memorandum of Agreement Regarding Wildlife Protection and Enhancement (MOA) determined that settlement would be accomplished through the protection of an agreed number of acres that, once protected, would permanently settle the federal mitigation requirement. BPA agreed to provide specific funding amounts for the purchase of lands in fee title or conservation easement, as well as the protection and maintenance of this acreage.



Conceptual view showing the scale of land acquisition area potential under the BPA-ODFW Agreement.

The MOA established goals for mitigating the effects of the construction, inundation and operation of the Willamette River Basin Flood Control and Hydroelectric Projects. Under the terms of the MOA, Oregon and the BPA agreed to acquire at least an additional 16,880 acres of wildlife mitigation property to protect 26,537 acres (or more) by the end of 2025. To accomplish this mitigation objective the parties established the Willamette Wildlife Mitigation Program (WWMP), managed by the Oregon Department of Fish and Wildlife (ODFW).

Program Priorities:

The cumulative effect of the loss and degradation of wildlife habitat in the Willamette has included the loss of abundance and diversity of many species, culminating in severe cases in the listings of plant, wildlife, and aquatic species under the Endangered Species Act (ESA). The Willamette Subbasin supports 31 fish, 18 amphibian, 15 reptile, 154 bird, and 69 mammal native species. Currently, 36 of these species are listed as threatened, endangered, or as a species of significant conservation concern. The primary cause of these declines is the loss of critical habitat.

The WWMP prioritizes efforts to protect and restore wildlife habitat in the Willamette basin. ODFW will use the Oregon Conservation Strategy to form the basis for the program. Other priorities for the program include those identified in the Willamette Basin Biological Opinions, the Willamette Subbasin Plan, and also Recovery Plans for terrestrial and aquatic Endangered Species Act (ESA)-listed species.

Projects funded through the WWMP should include the following goals:

- Protecting wildlife habitats with significant cultural values;
- Cost-sharing to ensure the WWMP can meet or exceed acreage objectives;
- Partnerships to enhance the likelihood of successful project completion;
- Providing public access on properties, consistent with conservation values of the property; and
- Encouraging the use of Ecosystem Services Markets.

Funding information:

BPA has agreed to fund acquisition through a set schedule of funding, totaling \$117,864,424 from 2011-2025. Program partners will also pursue cost sharing and other efficiencies so that the funds provided under the MOA could result in acquiring more than 16,880 additional acres during the project term. Any non-BPA funding that contributes to implementation of a project funded by BPA under this Agreement is in addition to (and not a substitute for) the funding from BPA by this Agreement.

Additional funding of \$26,226,440 is provided over the course of the MOA and devoted to development and implementation of an operations and monitoring program within ODFW, which will focus on the long term protection of habitat and habitat function and will develop programs to monitor habitat and species response on properties protected.

Project development:

ODFW will solicit project proposals on an annual basis. Projects should meet identified WWMP priorities. Once submitted, projects will be reviewed by a technical review team to be scored and ranked according to the WWMP's Project Selection Criteria, available on the website below. Following the technical review, proposed projects are reviewed by a stakeholder group, the Willamette Advisory Group. Following their review, the ODFW Director recommends a final project list to BPA for funding.



ODFW staff will assist sponsors with project identification and development. Please contact any of the WWMP staff or other key ODFW staff listed below for assistance with project development or questions about the WWMP.

For more information:

Willamette Wildlife Mitigation Program website: http://www.dfw.state.or.us/wildlife/willamette_wmp/index.asp

Oregon Conservation Strategy website: <http://www.dfw.state.or.us/conservationstrategy/index.asp>

ODFW contacts:

Laura Tesler – WWMP Staff Biologist
3406 Cherry Ave NE
Salem, OR 97303
laura.tesler@state.or.us
503-947-6086

Bernadette Graham Hudson – WWMP Policy Analyst
17330 SE Evelyn St
Clackamas, OR 97015
bernadette.n.graham-hudson@state.or.us
971-673-1134

Sue Beilke – WWMP North Valley Biologist
18330 NW Sauvie Island Rd
Portland, OR 97231
sue.g.beilke@state.or.us
503-621-3488

Andrea Hanson – Conservation Strategy Coordinator
3406 Cherry Avenue NE
Salem, OR 97303
andrea.v.hanson@state.or.us
(503) 947-6320

Susan Barnes – NW Region Conservation Biologist
17330 SE Evelyn St
Clackamas, OR 97015
susan.p.barnes@state.or.us
971-673-6010

