

Migratory Game Birds

2015/16 Hunting Season and Regulation Proposals
For consideration by the Oregon Fish and Wildlife Commission
August 7, 2015



Presentation Overview

- Regulation setting process
- Population status
- Seasons status quo from last year
- Season and bag limit proposals
- Other issues



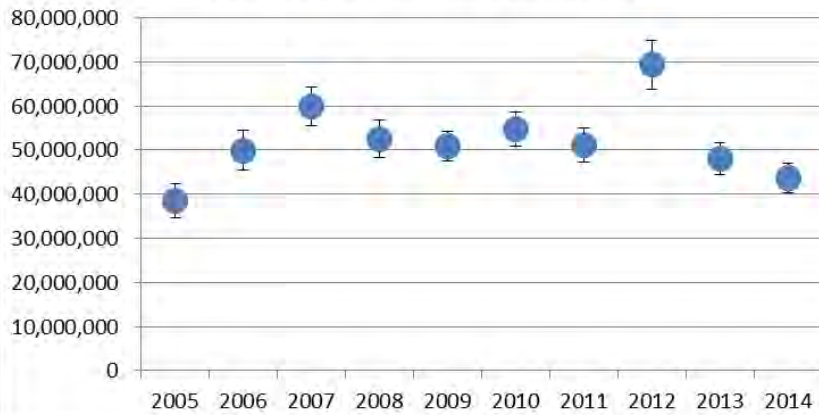
Decision Making Processes

- Hunting frameworks established by the USFWS in consultation with the Flyways
- Seasons established based on biological surveys
- Adaptive Harvest Management
 - Western Mallard Model
 - Pintail, scaup, canvasback strategies
 - Mourning dove and band-tailed pigeon strategies

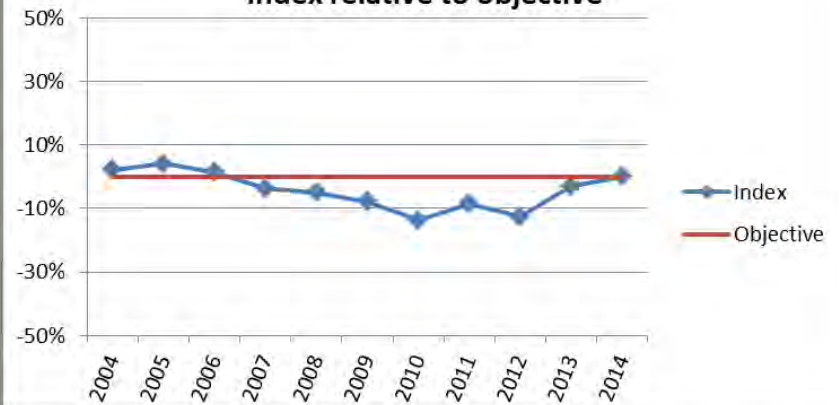


Population Status: Doves and Pigeons

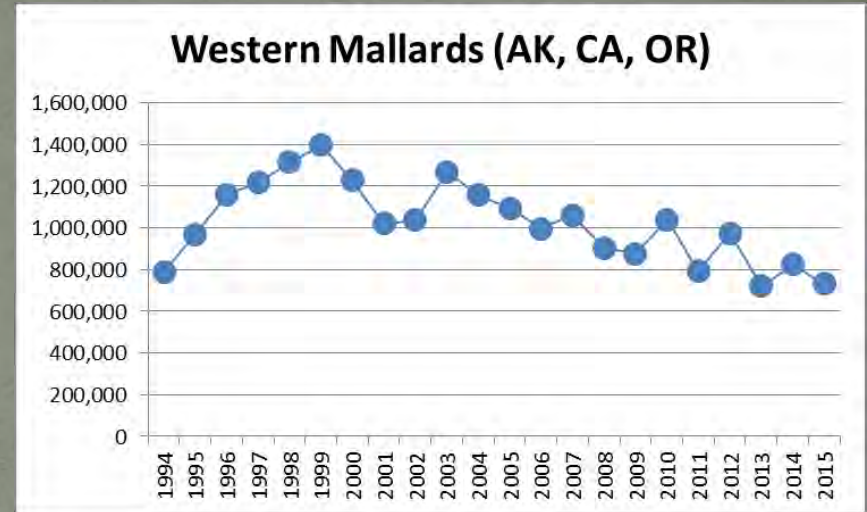
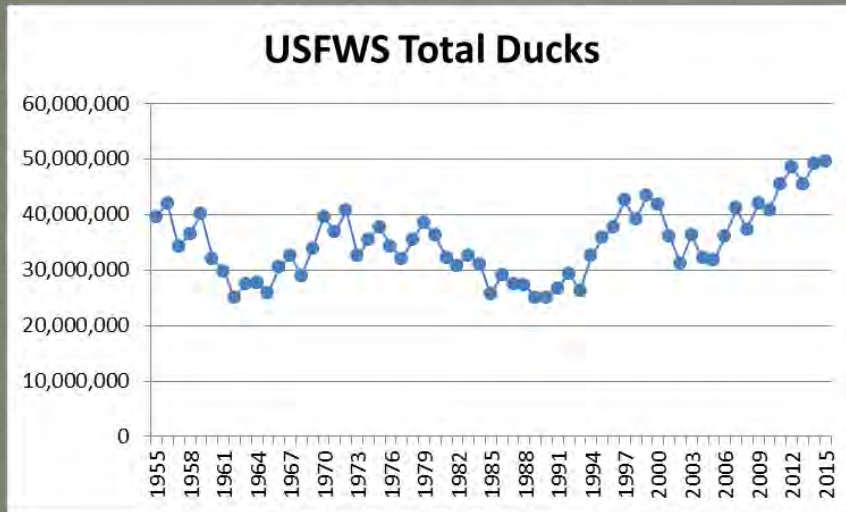
Western Mourning Doves



Band-tailed Pigeons index relative to objective



Population Status: Ducks



- Record total duck estimate
- Western mallards guide Pacific Flyway seasons
 - Down due to drought
 - Flyway working to incorporate more western stocks
 - Washington and British Columbia

Season Proposals

Status Quo

Canvasback

Duck Opening Date

NW Oregon Goose

Status Quo Seasons



- Ducks
 - Except Canvasback
- Geese
 - Except NW Oregon
- Brant
- American Coot
- Band-tailed Pigeon
- Mourning Dove
- Wilson's Snipe
- Crow
- Falconry

Duck Seasons

- Seasons nearly identical to last year
 - Record high population estimates in some areas
- Increase canvasback limit from 1 to 2
 - Allowed by national harvest strategy



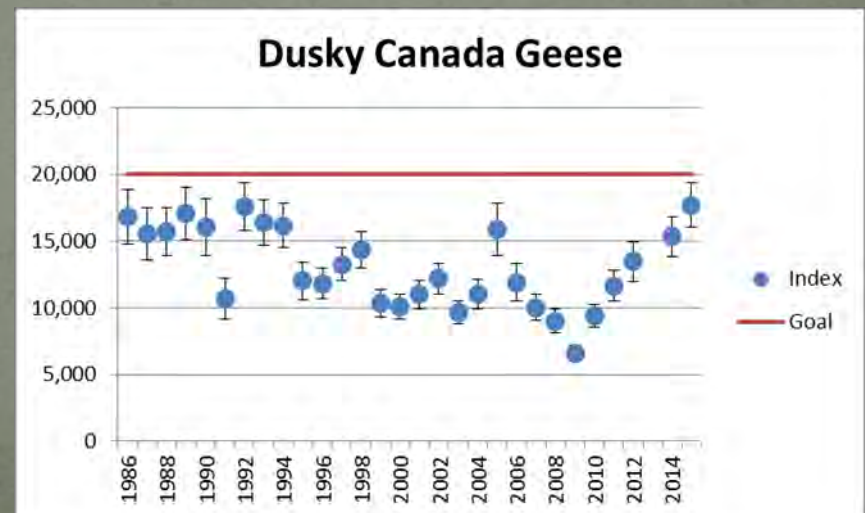
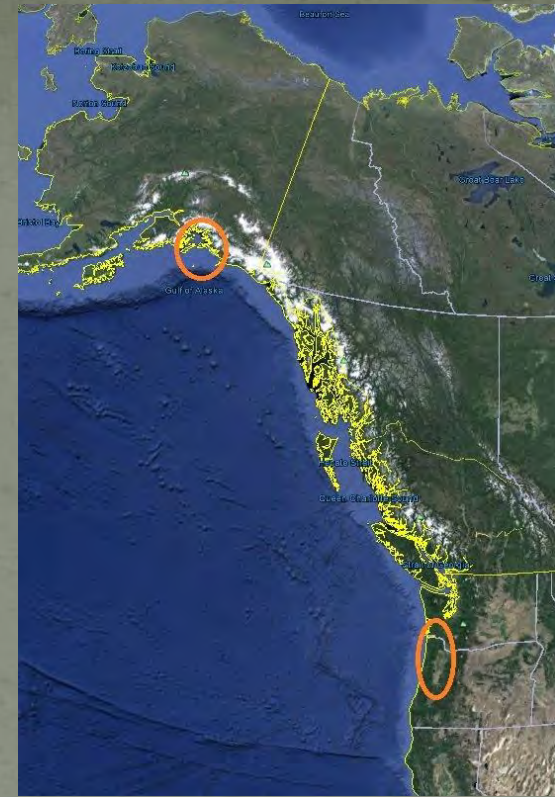
Duck Season Opening Day

- Oregon has two Zones
 - Traditionally Zone 2 opens one week prior to Zone 1
 - Except when it would open the same day as deer season
 - 2014 was one of those exceptions
 - Major discussion item last year
 - Proposing to return to traditional split opener
 - October 10 – Zone 2
 - October 17 – Zone 1



Dusky Canada Geese

- Restricted range and small population size
- Historically only wintering goose in Willamette Valley
- Low recruitment since 1970s



Northwest Permit Zone

- 1970s
 - Increase in wintering goose population
 - Increase in agricultural depredation
 - Dusky decline
- 1985 Flyways and USFWS implement dusky quota
 - Long goose season
 - Required check station monitoring
 - Goose hunter identification
 - Special Permit
 - Allowed one dusky per season

Has it worked?

- Yes

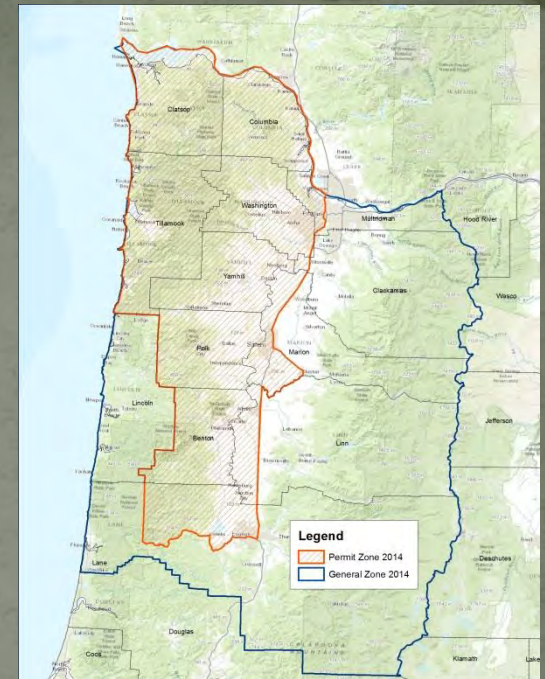
- Dusky population resilient to current harvest
- Survival of dusky geese high
- Seasons have remained open
 - Helps with depredation

- No

- Season burdensome
- Season costly
 - Cannot hunt all days
- Evidence some hunters do not comply with check station requirements

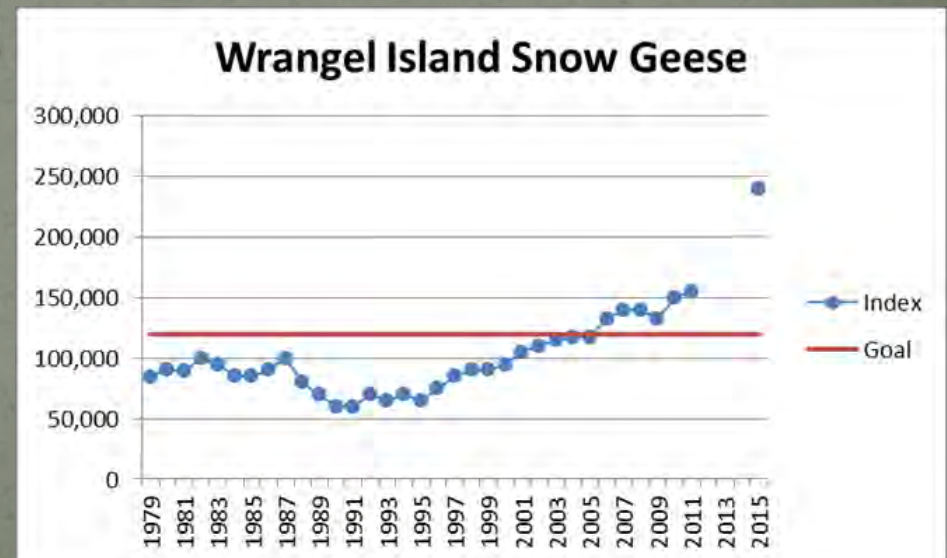
New Direction

- New harvest strategy approved
 - Dusky season in winter area closed
 - All other geese open
 - Combine Permit and General Zones
 - No quota = no check stations
 - Maintain education program and permit
 - Modify shooting hours
 - 15 minutes after sunrise – 15 minutes before sunset
 - Allow hunting 7 days a week
 - Allow goose hunting during youth waterfowl hunt



White geese in NW Oregon

- Increase bag limit to 6 per day
 - Matches rest of state
 - Wrangel Island population has grown significantly
 - Population is well above management goal



Other Issues

Sauvie Island East Side Reservation Check-in
Regulation Schedule

Sauvie Island Wildlife Area

- Reservation Check-in System Change
 - Approved last year
 - Implement this year
 - Computer system changes required
 - Other system priorities
 - On track for 2016/17



Regulatory Schedule

- Federal process has changed
 - Old – 2 regulatory meetings
 - USFWS June and July
 - Commission in August
 - Regulations out August 20
 - New – 1 regulatory meeting
 - USFWS October of year prior to hunting season
 - Commission in April
 - Regulations out by July 1
 - All game bird regulations in April
 - Upland game birds via framework
 - Special hunting opportunities, sage-grouse permits & fall turkey tags later



FEDERAL REGISTER

Vol. 79

Tuesday,

No. 184

September 23, 2014

Part II

Department of the Interior

Fish and Wildlife Service
50 CFR Part 20

Migratory Bird Hunting; Final Frameworks for Late-Season Migratory Bird
Hunting Regulations; Final Rule

Questions?

