

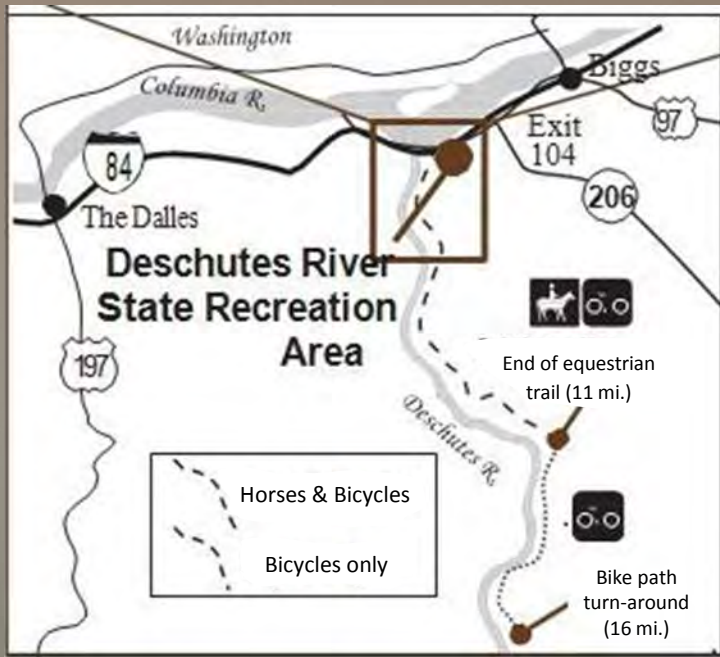
Lower Deschutes River Ranch Acquisition



Lower Deschutes Wildlife Area

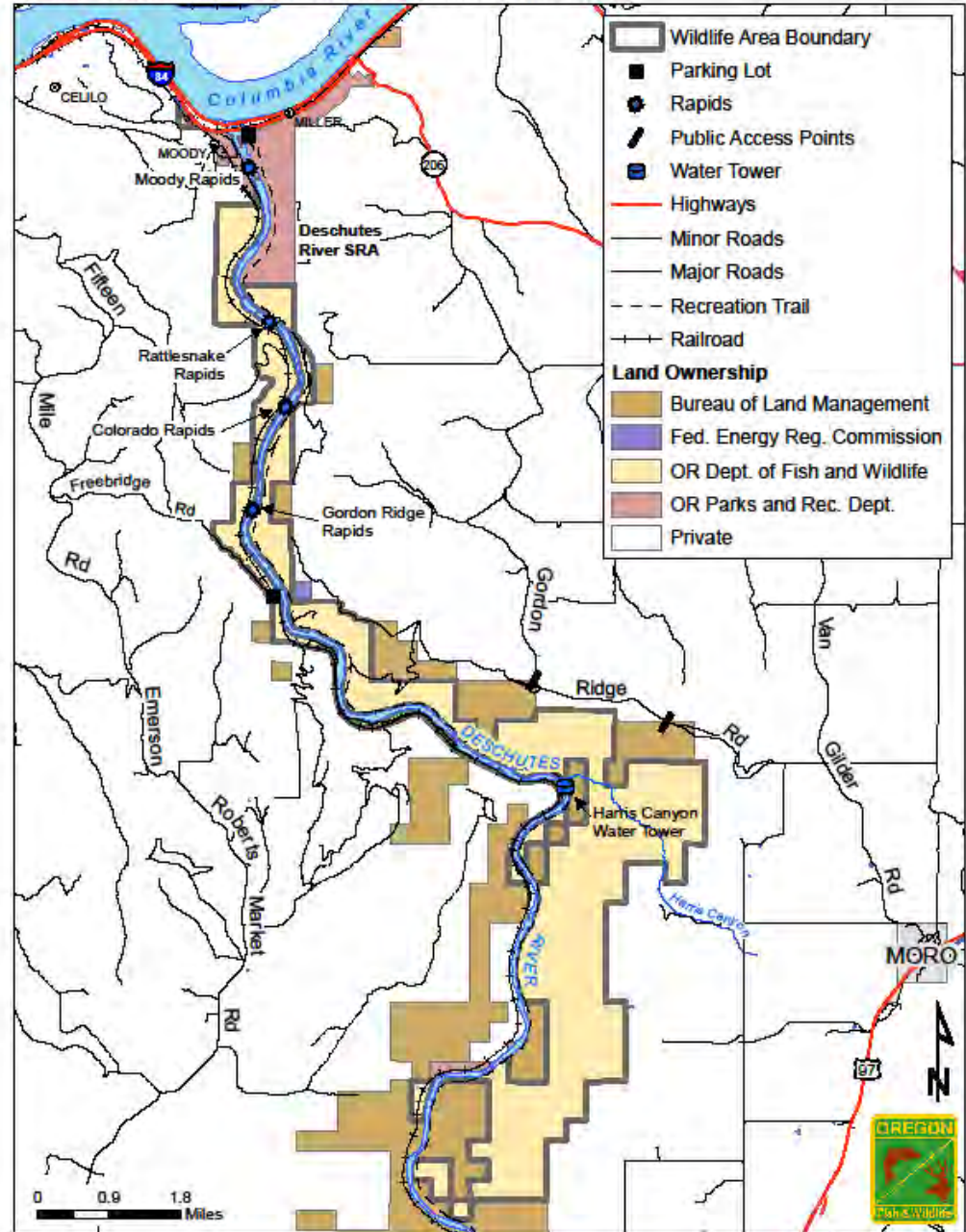
Located in Wasco and Sherman Counties
 17 miles East of The Dalles
 I-84 to Exit 97 Celilo Village
 travel East 4 miles

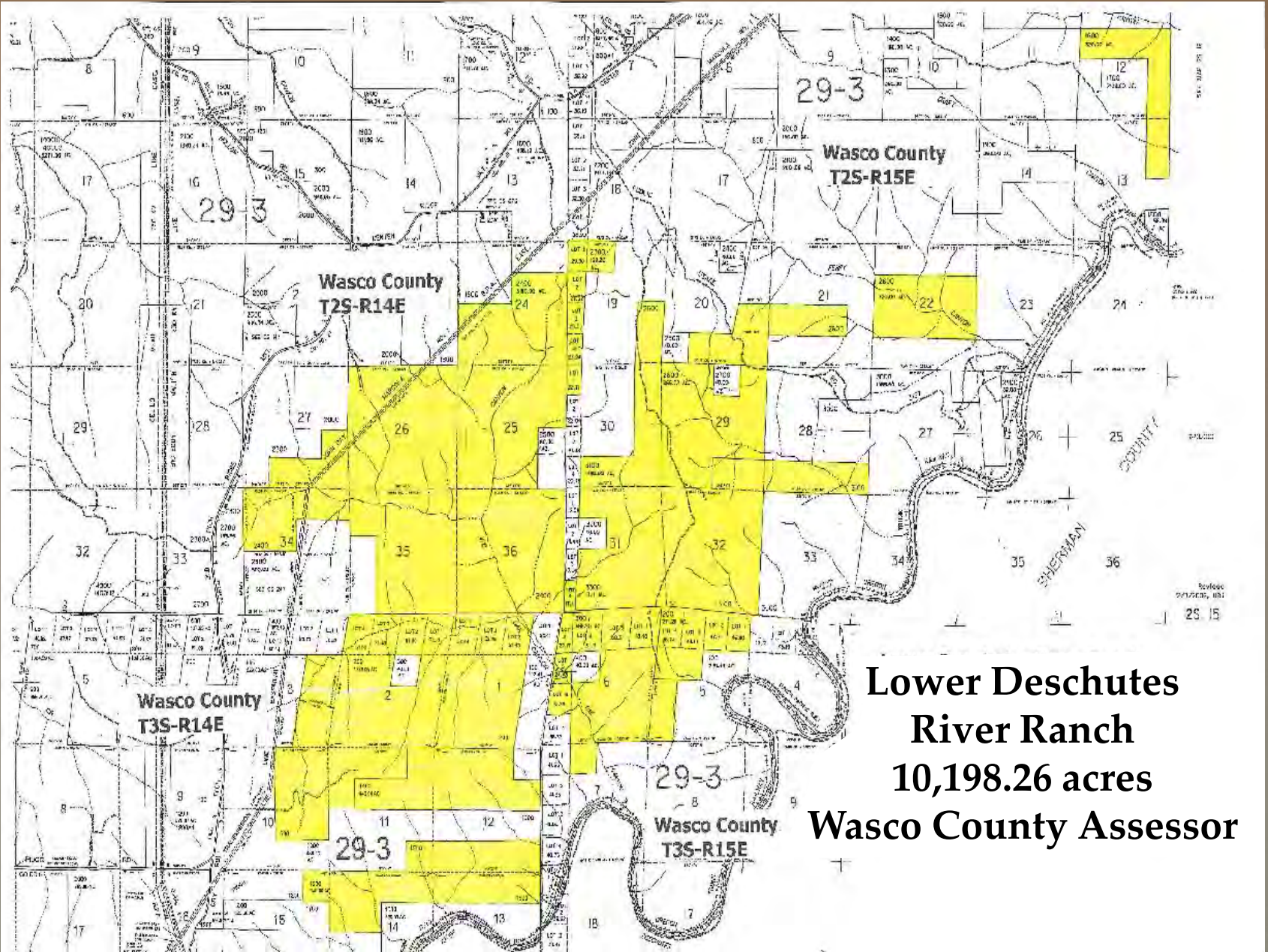
State Park



Heritage Landing Boat Launch
 near confluence of
 Deschutes and Columbia rivers

Figure 1 - Lower Deschutes Wildlife Area Features and Ownership

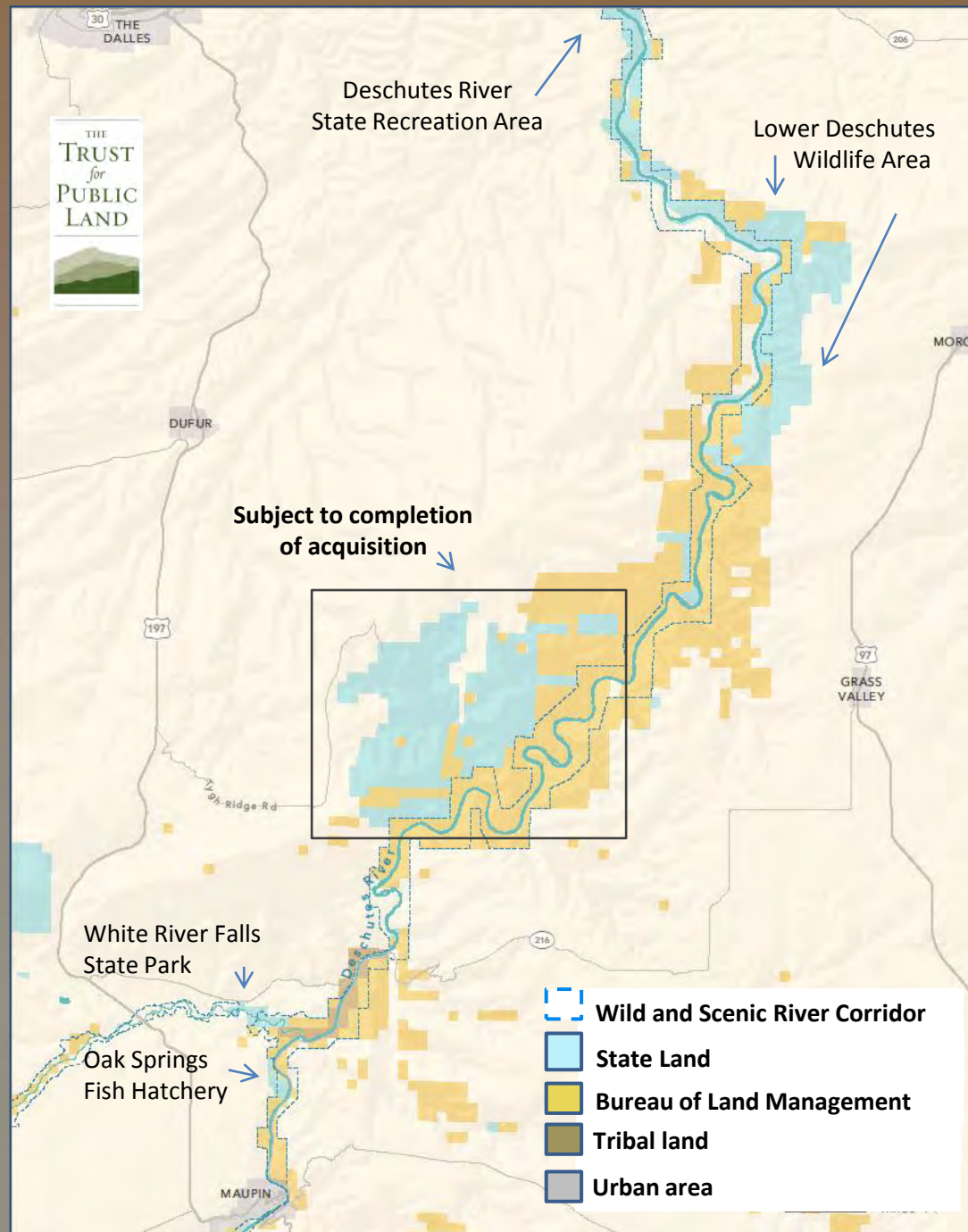




**Lower Deschutes
River Ranch
10,198.26 acres
Wasco County Assessor**

BENEFITS OF LAND PURCHASE

- Enhances access to approx. 40 river miles of Deschutes River from its mouth to Pine Hollow boat launch.
- Increases public ownership of Deschutes Wild & Scenic River corridor to approx. 33,000 acres.
- Restore and increase protection for a variety of key species and habitat.
- Increased public recreation and restoration projects will provide local economic opportunities.



Lower Deschutes River Ranch Property

Consistent with:

- Wasco Co. Comprehensive Plan
- Lower Deschutes River Management Plan
- Lower Deschutes Wildlife Management Area Plan



Lower Deschutes Conservation Priority Area Habitats



Perennial Grasslands
Sagebrush Shrub
Steppe
Oak Woodlands



Aquatic
Riparian
Wetland

Lower Deschutes Conservation Priority Area Focal Species



Mid-Columbia
Summer Steelhead
Bull Trout

Ferruginous Hawk
Lewis' Woodpecker
Sagebrush Lizard
Bighorn Sheep



Management and Restoration Priorities



**Riparian and Stream
Restoration
Grassland Restoration
Improved Public Access**



Management Plan

Public Involvement

- Nov. 2012** Property originally identified as potential mitigation project
- April 2013** TPL signs purchase option agreement
- May 2013** Presented project to Deschutes Club, and Mid-Columbia District Annual Meeting
- Oct. 2013** Conduct property tour for Wasco County Board of Commissioners
- April 2014** Presented project to Deschutes River managers meeting
- May 2014** Emergency Board authorization to apply for federal grant
- June 2014** OPRD approves federal Land and Water Conservation Fund grant.
- Oct. 2014** Presented to Wasco County Soil and Water Conservation District
- Feb. 2015** Public meeting in The Dalles
- June 2015** Met with adjacent landowners and Oregon Farm Bureau
- July 2015** Received Legislative approval for POP 128 in ODFW budget, received Public Lands Advisory Council recommendation to proceed

Acquisition Funding Sources

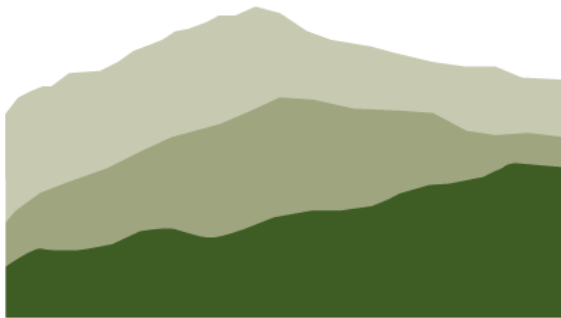
USFWS Wildlife Restoration (PR)	\$1,290,000
Land & Water Conservation Fund (OPRD)	\$135,000
OR Foundation for North American Wild Sheep	\$25,000
Wild Sheep Foundation	\$25,000
Ruby Pipeline Mitigation Fund	\$910,000
Criterion Mitigation Fund	\$90,000
Portland General Electric /Pelton	\$300,000
Trust for Public Land Legacy Fund Donation	\$225,000
** TOTAL	\$3,000,000

**** Approved as Policy Option Package 128 in the Agency's Legislatively Approved Budget.**

Partners and Supporters



THE
TRUST
for
PUBLIC
LAND



Appraisals

Appraisal Reviews

**Phase I Environmental
Site Assessment**

**Cultural Resource
Survey**

Closing Costs

Title Insurance Premiums

Escrow Fees

County Recording Fees

Questions?

