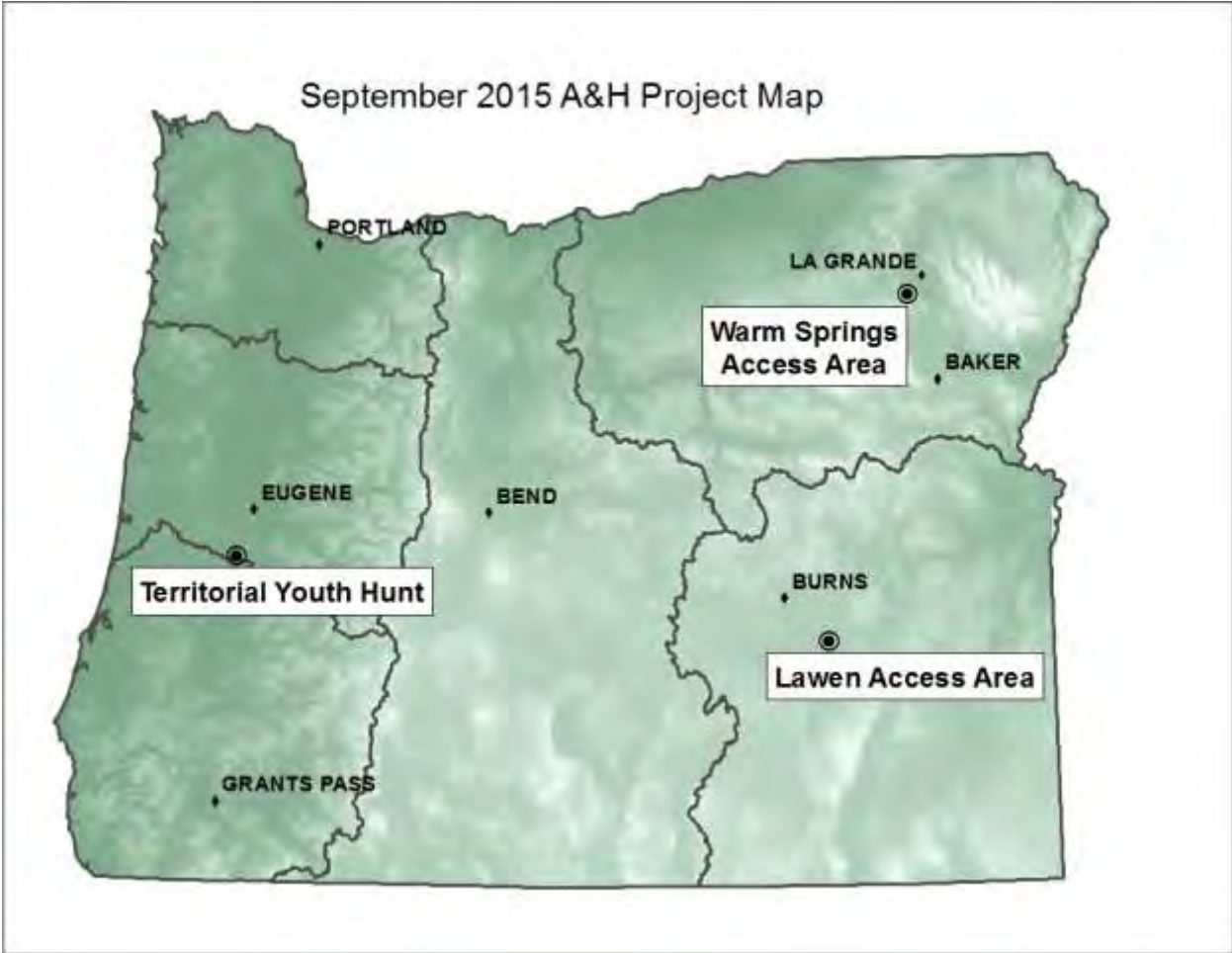


### A&H Project Maps



# Lawen Access Area

## Lawen Access Area

The Lawen Lake Access Area is a cooperative program between the private landowners and the Oregon Department of Fish and Wildlife Access and Inland Programs to allow public hunting access on private lands and increased access to public land. The Access Area provides public hunting opportunities for deer, pheasant, quail, waterfowl, California quail, and snipe. All Oregon Department of Fish and Wildlife regulations and Seasons Apply.

**Access Allowed:**  
August 18 - February 28

**Area Regulations:**

- No ATVs on Private Land
- No Camping or Night Time use of the private land
- No Fire, be careful with cigarettes
- No Littering, please pick up any trash including expended shells
- Report any unlawful activities
- Respect landowners' rights and needs
- Landowners' permission is required for all activities
- No Access to adjacent public lands without landowner permission
- Vehicle travel only on roads, request and post an open access road

**Note:** Hunting on Private Land is a privilege, not a right. Private land hunting opportunities will remain in the full and complete ownership and control of the landowner. All rights, title, easements, and rights of public landowners are reserved.

**Access Area Boundary**

**Open Access Road**

**Intermittent Wet Areas**

**State Land**

**Private Land**

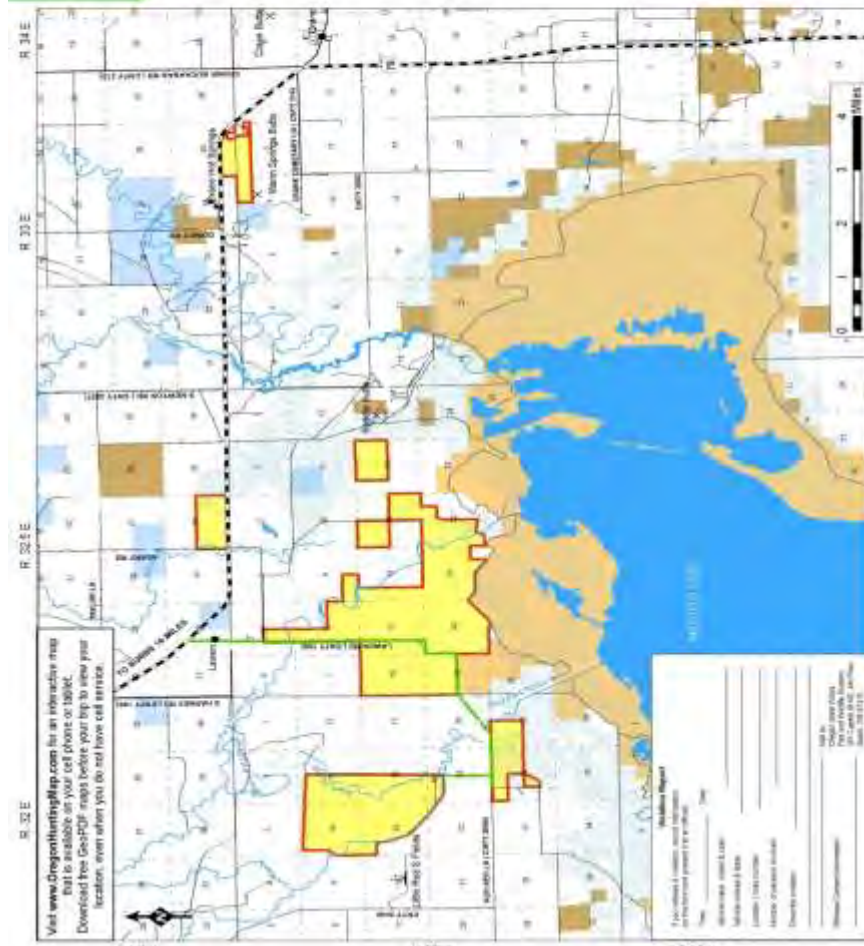
**BLM Land**

**USFWS Land**

**Scale**

**North Arrow**

This map is for informational purposes only. It is not intended to be used as a legal document. For more information, please contact the Oregon Department of Fish and Wildlife at 1-800-452-7888.



Visit [www.dfgwildlife.gov](http://www.dfgwildlife.gov) for an interactive map that is available on your cell phone or tablet. Download free GeoPDF maps before your trip to view your location, even when you do not have cell service.

**Map Information:**

Map Date: 08/18/18

Map Scale: 1:50,000

Map Projection: NAD 83 UTM Zone 12N

Map Data: Oregon Department of Fish and Wildlife, USFWS, BLM, Private Landowners

Map Contact: Oregon Department of Fish and Wildlife, 1-800-452-7888



