



Oregon Fish & Wildlife Commission
January 15, 2015
Exhibit C

2014 Nearshore Logbook Report
and
2016 Groundfish Fishery Regulations

Maggie Sommer
Marine Fishery Management Section Leader

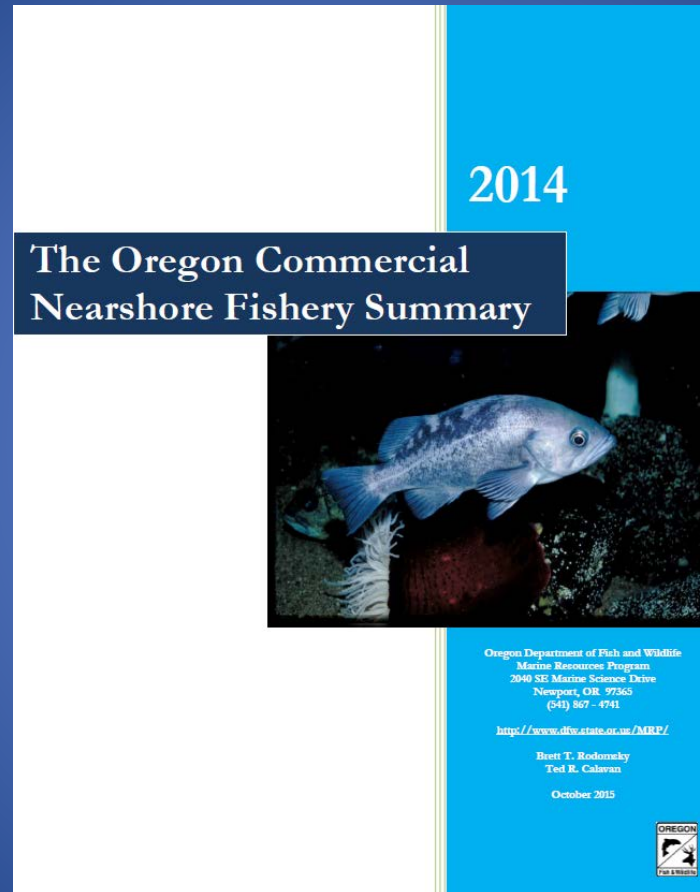


Outline

1. 2014 Commercial Nearshore Logbook/Fishery Report
2. 2016 Groundfish Regulations
 - New species: deacon rockfish
 - State regulations for sport & commercial nearshore fisheries
 - Review 2015 fisheries & public input
 - Staff recommendations
 - New federal groundfish rules recommended for adoption by reference



2014 Commercial Nearshore Logbook/Fishery Report Annual Fishery Summary



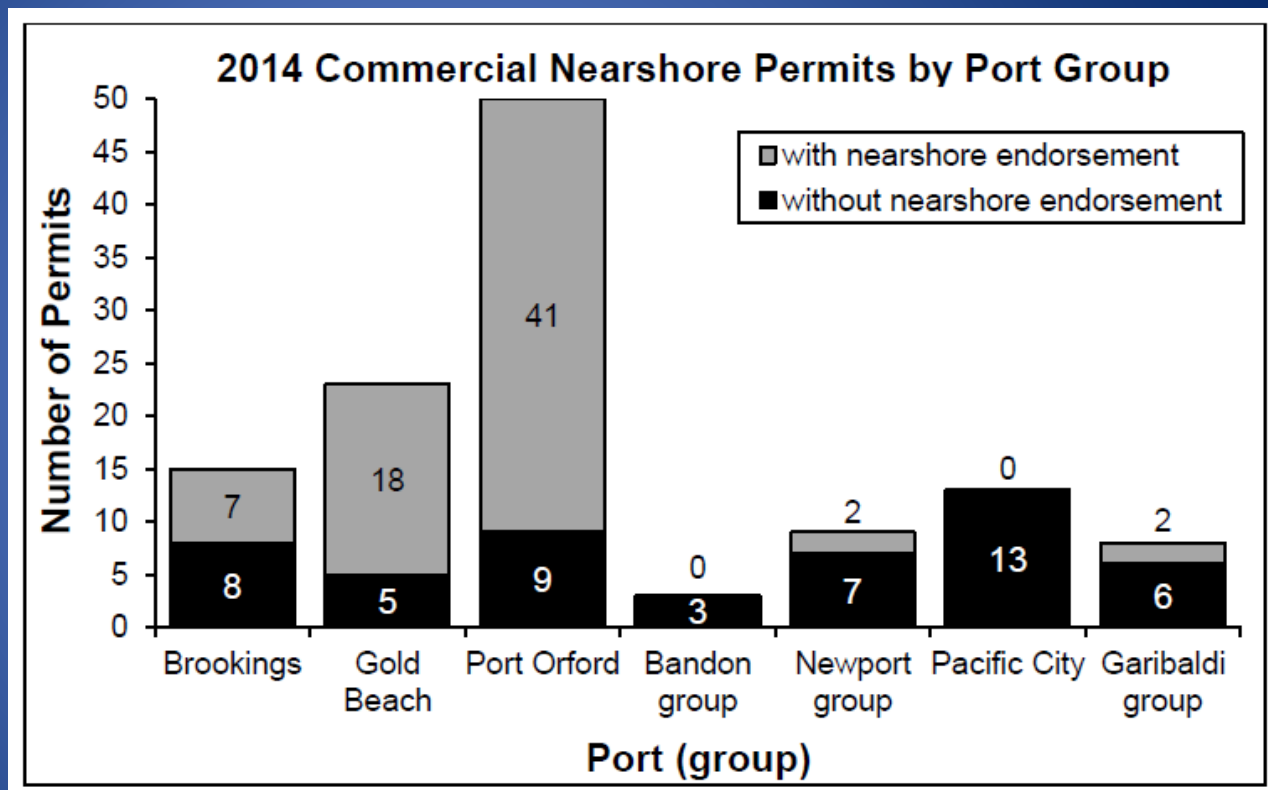
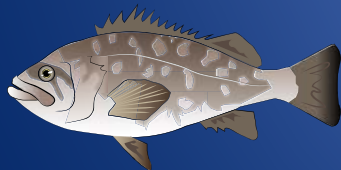
<http://www.dfw.state.or.us/MRP/publications/>



2014 Commercial Nearshore Logbook/Fishery Report Participation

70 black/blue rockfish permits with nearshore endorsement

51 without





2014 Commercial Nearshore Logbook/Fishery Report

Logbook Return Rate

Nearshore landings obtained from commercial fish tickets (Ticket Lbs.), number of trips requiring logs (Trips), and fleet compliance with the logbook submission requirement (Compliance).

Year	Tickets Lbs	Trips	Compliance
2014	460,886	2,496	84%
2013	501,787	2,644	96%
2012	469,317	2,418	95%
2011	456,013	2,478	95%
2010	406,904	2,037	83%
2009	606,832	1,920	64%
2008	466,153	1,790	69%
2007	443,699	1,697	71%
2006	406,659	1,949	80%
2004	432,724	2,264	84%



2016 Groundfish Regulations

1. Deacon rockfish
2. Recreational groundfish
3. Commercial nearshore groundfish
4. New federal rules (for adoption by reference)



2016 State Rules for Groundfish Fisheries Deacon Rockfish Clarification

Deacon rockfish: In 2015, recognized as a new species, distinct from blue RF. Has been assessed & managed as an unofficial complex with blue rockfish – no change proposed.

Staff recommendation – modify regulations for sport and commercial fisheries to explicitly include deacon rockfish for all regulations applying to blue rockfish.





2016 State Rules for Groundfish Fisheries Background – Regulatory Framework



Federal rules implemented by the National Marine Fisheries Service are the basis for all groundfish fisheries. Federal management is on a 2-year cycle.



OFWC adopts additional regulations to maintain harvest within specified levels and meet management goals



2016 State Rules for Groundfish Fisheries

Background – State Management Goals

Recreational Fishery Goals

- Year-round season
- Prioritize access to opportunity for black rockfish & lingcod



Commercial Fishery Goals

- Year-round season
- Prioritize access to economic value & efficiency





2016 State Rules for Groundfish Fisheries Background – Changes for 2015



Federal harvest guideline for “Minor Nearshore Rockfish” for northern CA, OR, & WA was reduced 27% for 2015 & 16

“Minor Nearshore Rockfish” includes blue/deacon, China, copper, quillback, gopher, black-and-yellow, grass, brown, calico, kelp, and olive rockfishes, and treefish



2016 State Rules for Groundfish Fisheries Background – Changes for 2015



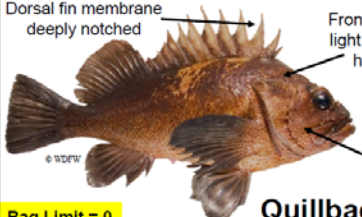
In January, 2015, OFWC adopted significant restrictions to sport and commercial nearshore fisheries to meet this reduction:

- Lower state harvest guidelines
- Reduced commercial cumulative 2-month trip limits
- Sport sub-bag limit of 3 blue rockfish and non-retention of China, copper, and quillback rockfishes

OREGON
Fish & Wildlife

Rockfish Identification Tips

China, Copper, and Quillback Rockfish

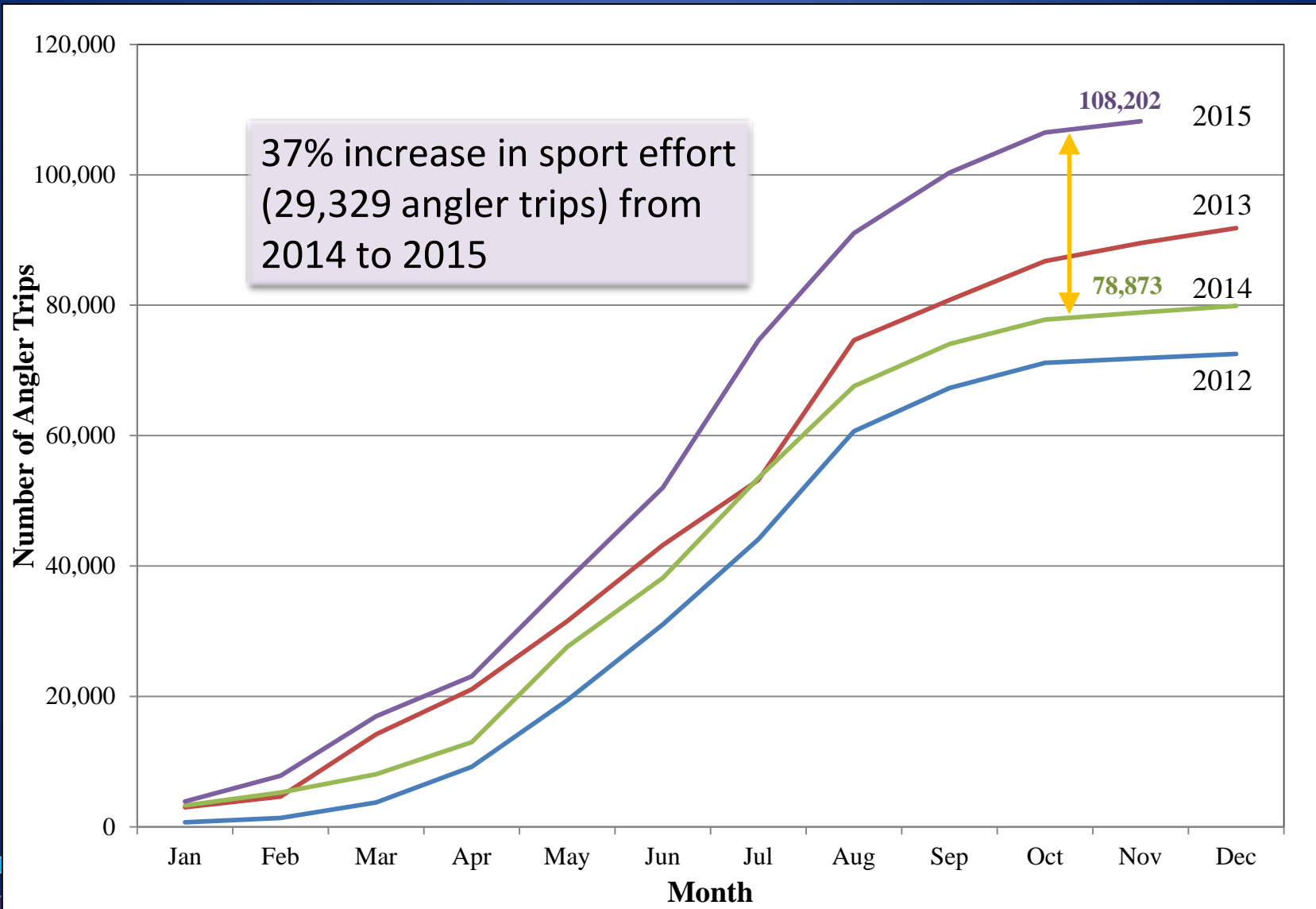
<p>Yellow stripe that extends from front of dorsal fin to the lateral line and out to tail</p>  <p>China Rockfish Bag Limit = 0</p>	<p>Dorsal fin membrane <u>not</u> deeply notched</p> <p>Rear half of lateral line in a clear zone</p>  <p>Copper Rockfish Bag Limit = 0</p>
<p>Retention of these 3 species prohibited</p>	<p>Dorsal fin membrane deeply notched</p> <p>Front of body marked with light brown or yellow, rear half is gray to black</p> <p>"Freckles" on head and gill cover</p>  <p>Quillback Rockfish Bag Limit = 0</p>



2015 Sport Fishery Summary & 2016 Regulations



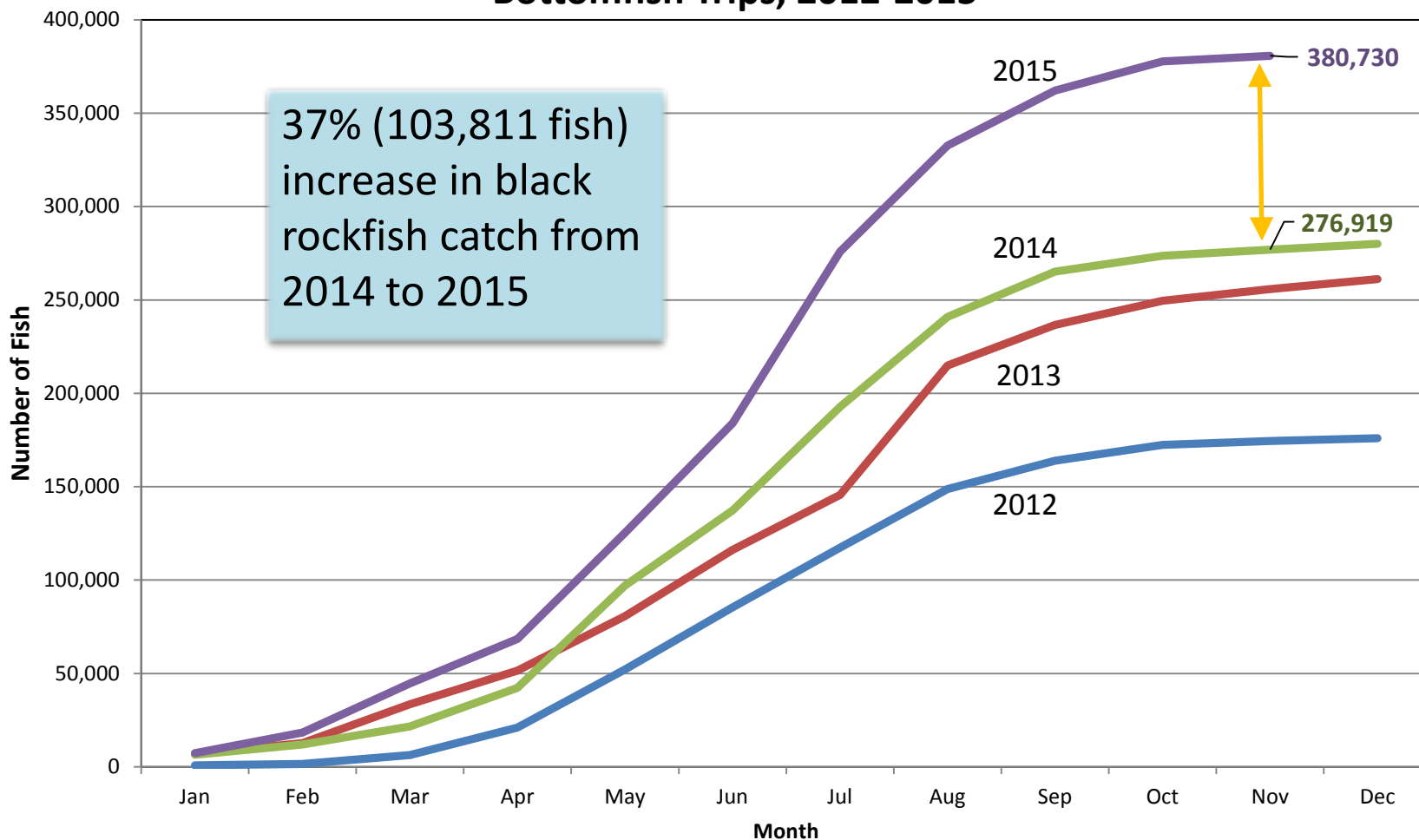
2016 State Rules for Groundfish Fisheries 2015 Recreational Fishery





2016 State Rules for Groundfish Fisheries 2015 Recreational Fishery

Cumulative Number of Black Rockfish Landed Monthly on Bottomfish Trips, 2012-2015

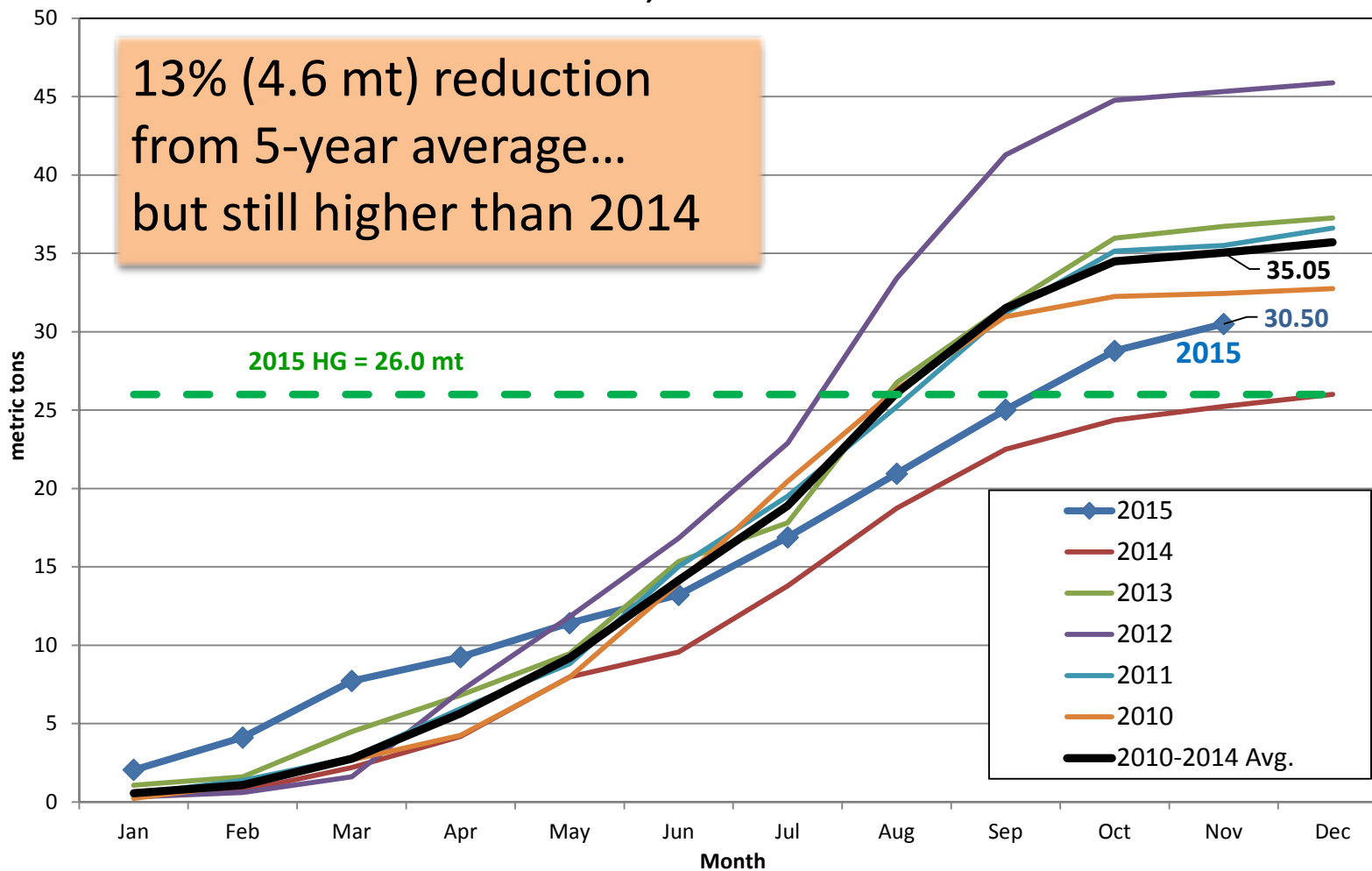


37% (103,811 fish)
increase in black
rockfish catch from
2014 to 2015



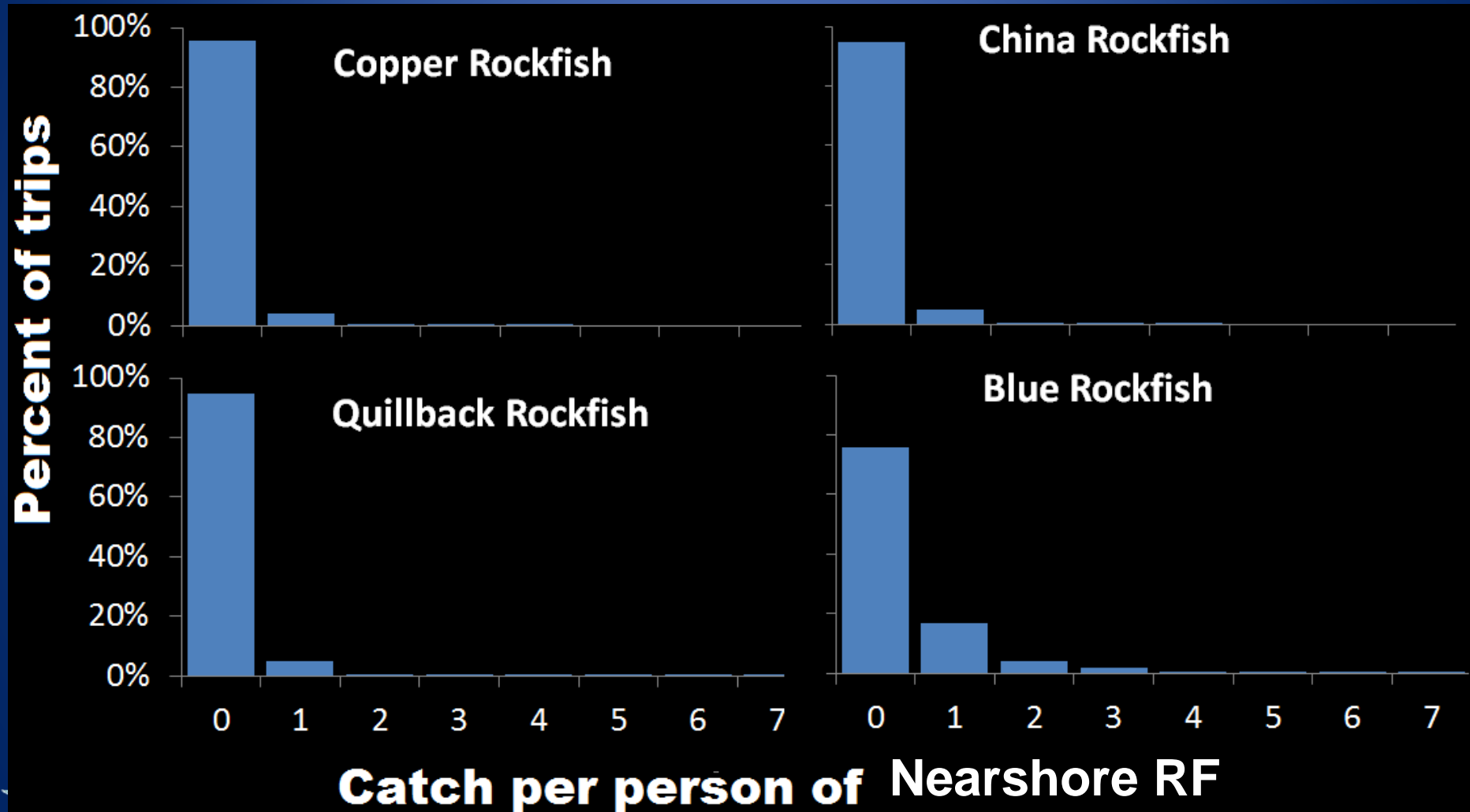
2016 State Rules for Groundfish Fisheries Background – 2015 Recreational Fishery

Cumulative Total Mortality (mt) of Nearshore Rockfish Species by Month, 2010-2015





Catch per angler trip of common nearshore species, prior to 2015





2016 State Rules for Groundfish Fisheries Public Input for 2016 Sport Rules

Sportfishing Advisory Committee, July

- 11-member committee representing a range of ocean sportfishing interests and geographic areas
 - “Keep as much opportunity as possible”
 - “Expand all-depth season if possible”

Public meetings: October, in Brookings, North Bend, & Newport, including webinar

- 30 participants, 1 via webinar; additional input via phone/email
 - “Maintain year-round season”
 - “Don’t reduce bag limits further”



2016 State Rules for Groundfish Fisheries Staff Recommendations on Sport Regulations

No changes to status quo:

Marine Fish (rockfish, greenling, cabezon) bag limit = 7 fish

- Sub-bag limit of 3 blue or deacon rockfish
- Sub-bag limit of 1 canary rockfish
- Sub-bag limit of 1 cabezon (closed January 1 – June 30)
- No retention of yelloweye, China, quillback, copper rockfishes

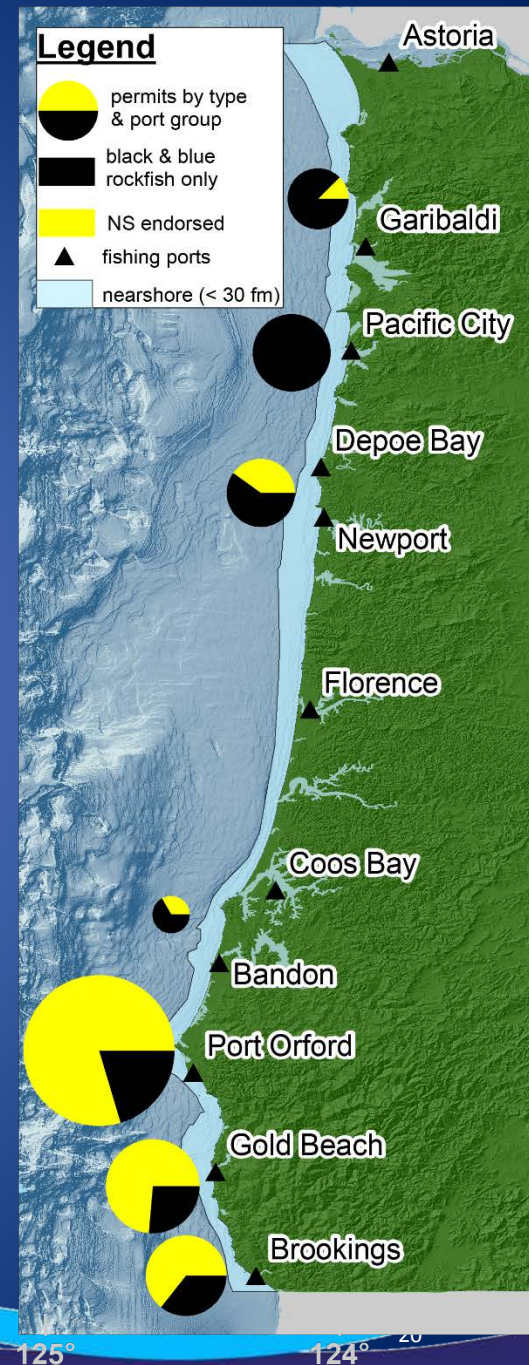


2015 Commercial Nearshore Fishery Summary & 2016 Regulations



Permits – 2014 & 2015

Port Group	Black & Blue		NS endorsed		Total	
	2014	2015	2014	2015	2014	2015
Garibaldi group	6	9	2	1	8	8
Pacific City	13	13	0	0	13	13
Newport group	7	6	2	4	9	10
Bandon group	3	2	0	1	3	3
Port Orford	9	10	41	40	50	49
Gold Beach	5	5	18	14	23	19
Brookings	8	5	7	9	15	14
Total	51	50	70	69	121	119





Commercial Nearshore Landings 2014 & 2015

Species/ Management Group	Black RF	Blue/ Deacon RF	ONSRF	Cabezon	Greenling
2014 landings (mt)	123.1	3.5	7.1	15.4	15.4
2015 landings (mt)	120.9	1.2	5.2	16.1	12.9



2016 State Rules for Groundfish Fisheries

2015 Commercial Nearshore In-season Trip Limit Changes

Species group	2015 Outset of year (mt per 2-month period)	2015 with in-season changes (mt per 2-month period)
Black RF	P1 = 1,000 P2 = 1,400 P3 = 1,700 P4 = 1,600 P5 = 1,400 P6 = 1,000	P1 = 1,000 P2 = 1,400 P3 = 1,700 P4 = 1,800 P5 = 1,600 P6 = 1,200
Blue/ Deacon RF	15	50
Other NS RF	100	300
Cabazon	1,500	1,500
Greenling	300	400



2016 State Rules for Groundfish Fisheries Public Input for 2016 Commercial Nearshore Rules

Public meetings in October in Gold Beach, Port Orford,
Pacific City

- 16 nearshore fishers, 7 federal observers, 2 Oregon State Police

Major messages

- 2015 effort pattern driven by weather, other fisheries
- Stability and predictability in regulations is very important
- Maintain year-round season. South coast has stronger winter markets for black rockfish than north coast.
- Blue rockfish are abundant; low trip limits are frustrating



2016 State Rules for Groundfish Fisheries

Staff Recommendation for 2016 Commercial Nearshore Rules

Adopt the following cumulative period trip limits for 2016:

Species group	2015 Outset of year	2015 with In-season changes	2016
Black RF	P1 = 1,000 P2 = 1,400 P3 = 1,700 P4 = 1,600 P5 = 1,400 P6 = 1,000	P1 = 1,000 P2 = 1,400 P3 = 1,700 P4 = 1,800 P5 = 1,600 P6 = 1,200	P1 = 1,000 P2 = 1,400 P3 = 1,700 P4 = 1,800 P5 = 1,600 P6 = 1,200
Blue/Deacon RF	15	50	30
Other NS RF	100	300	200
Cabezon	1,500	1,500	1,500
Greenling	300	400	400



2016 State Rules for Groundfish Fisheries New Federal Groundfish Regulations – 1 of 3

Groundfish definition: In 2015, PFMC added grenadiers and skates occurring off OR, WA, or CA to the federal groundfish FMP.

- Staff recommendation – update state definition of groundfish to match

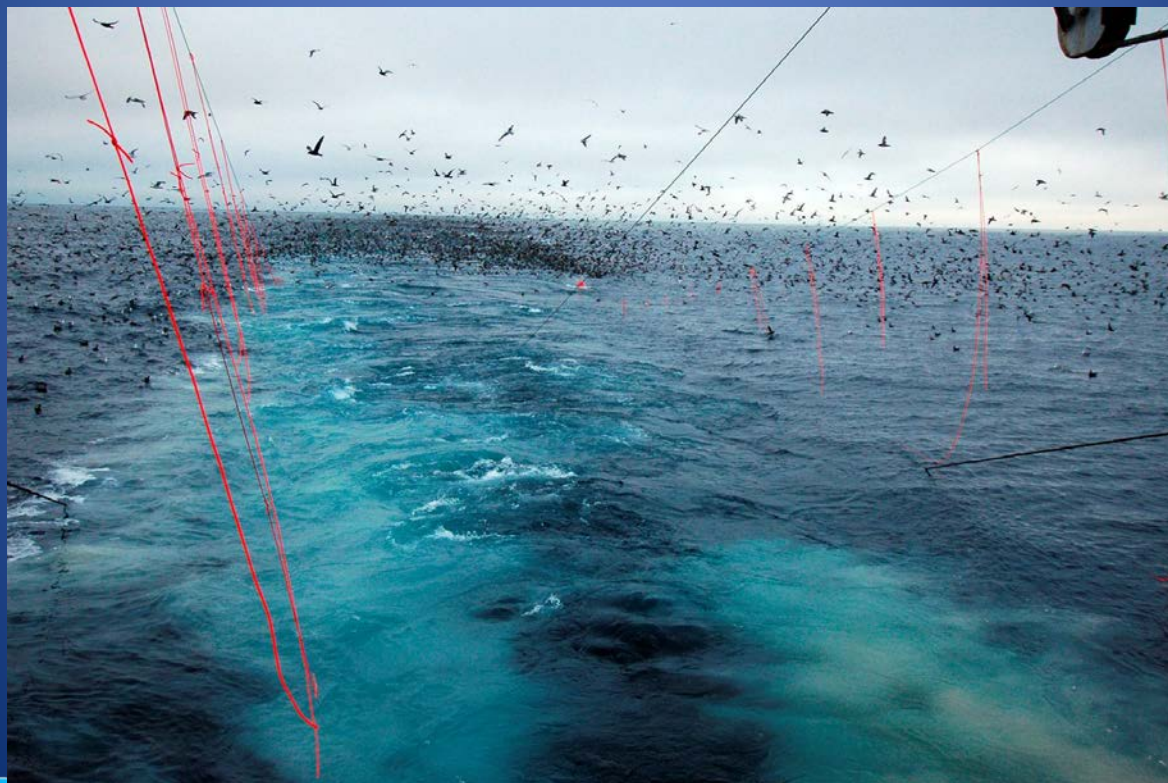


← to 34" →



2016 State Rules for Groundfish Fisheries New Federal Groundfish Regulations – 2 of 3

Seabird avoidance measures: streamer lines required during setting/retrieving longline gear for vessels >55'
– Staff recommendation – adopt in state rule by reference





2016 State Rules for Groundfish Fisheries

New Federal Groundfish Regulations – 3 of 3

Prohibited/protected species retention in whiting fisheries: NMFS clarified that retention of prohibited and protected species is allowed until landing (facilitates provision of this bycatch to food share programs)

- Staff recommendation – adopt in state rule by reference





2016 State Rules for Groundfish Fisheries Summary of All Staff Recommendations

- Adopt staff recommendation to include deacon rockfish in all regulations that apply to blue rockfish
- Adopt staff recommendations for commercial nearshore cumulative trip limits for Other Nearshore Rockfish, Blue/Deacon Rockfish, and Kelp Greenling
- Adopt federal regulations via revision/reference:
 - Inclusion of all grenadiers and skates occurring off OR, WA, CA in groundfish definitions
 - Federal seabird avoidance measures
 - Clarification on retention of prohibited/protected species retention in midwater trawl fisheries



End

Questions/Discussion?

Public Testimony?