

# Columbia River Harvest Facts

Sport and Commercial Sharing of the  
Resource, 2001-2015

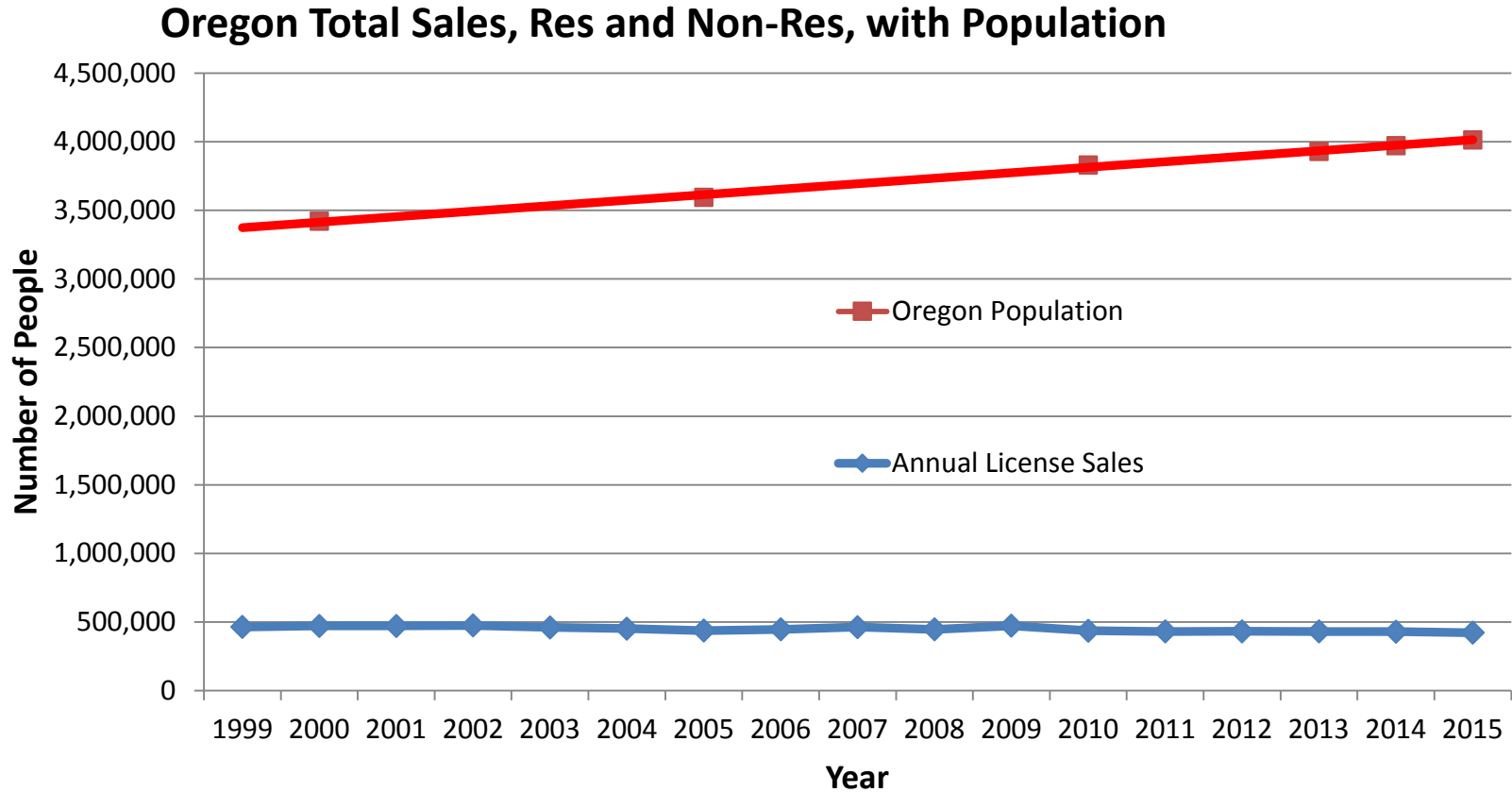
(All data used was from WDFW/ODFW reports)

by

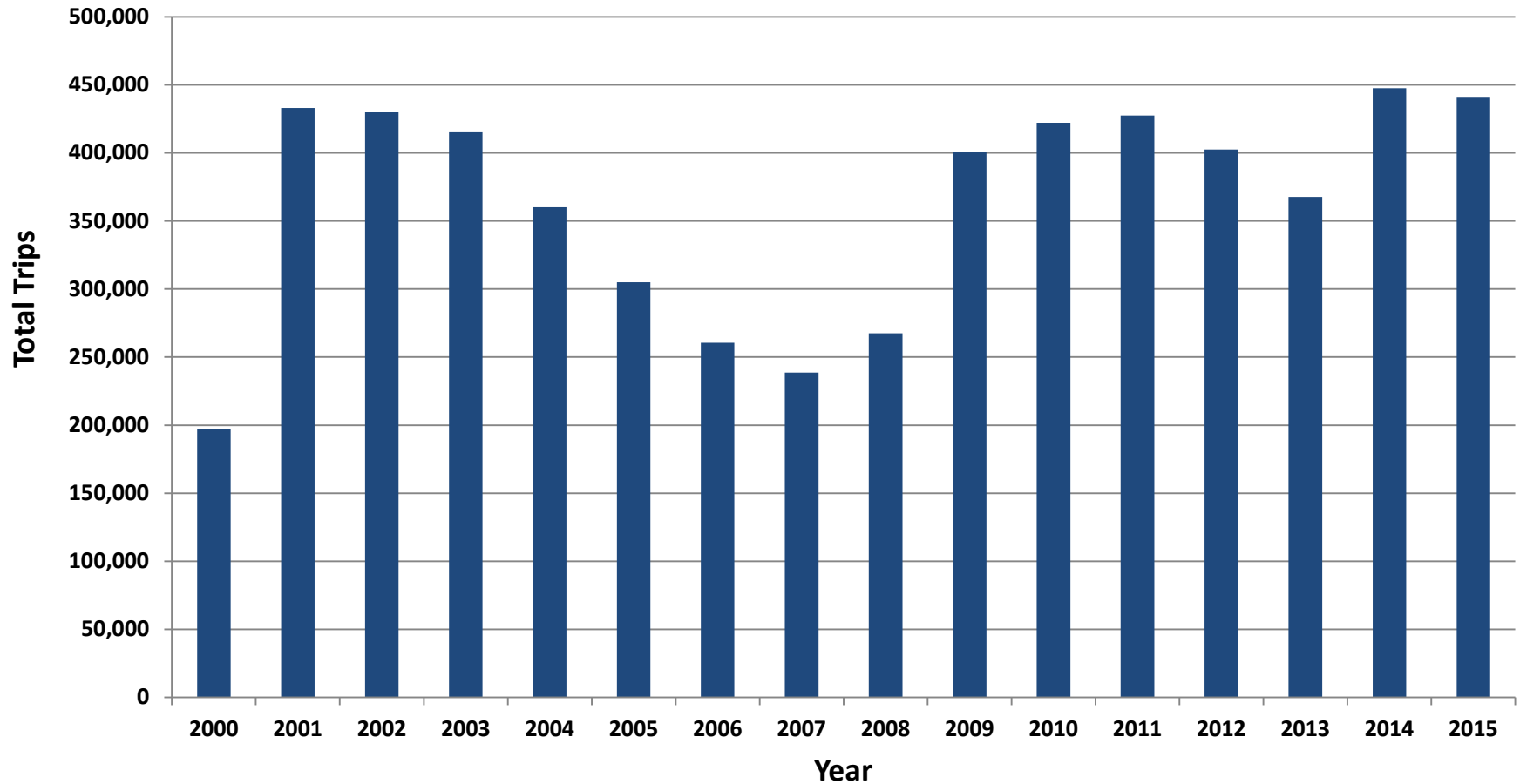
Robert Sudar

Commercial Advisor, Working Group Member, Salmon Buyer and  
Marketer from Longview

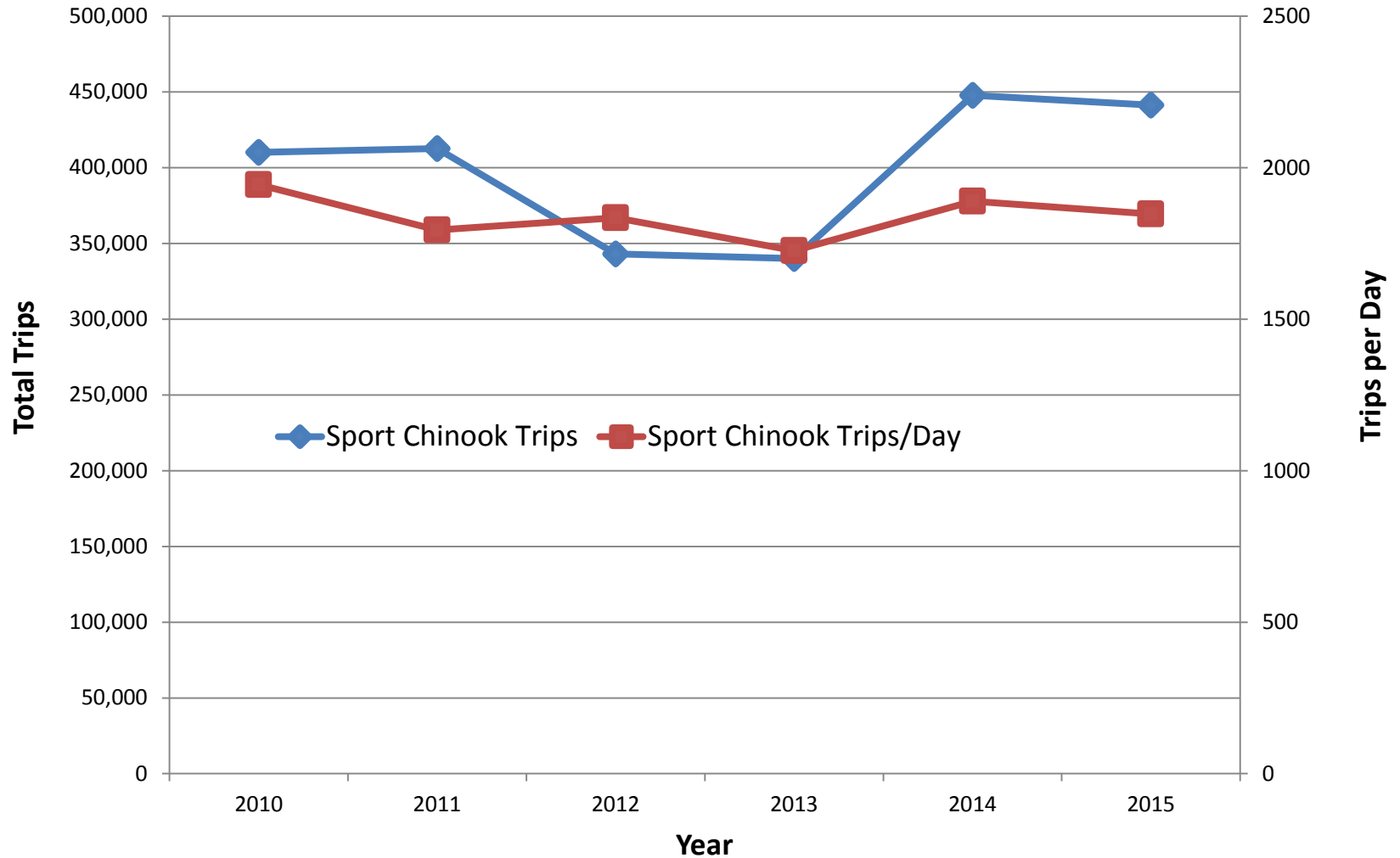
# Oregon's Population Has Grown 17% Over Last 15 Years but Angler License Sales Are The Same



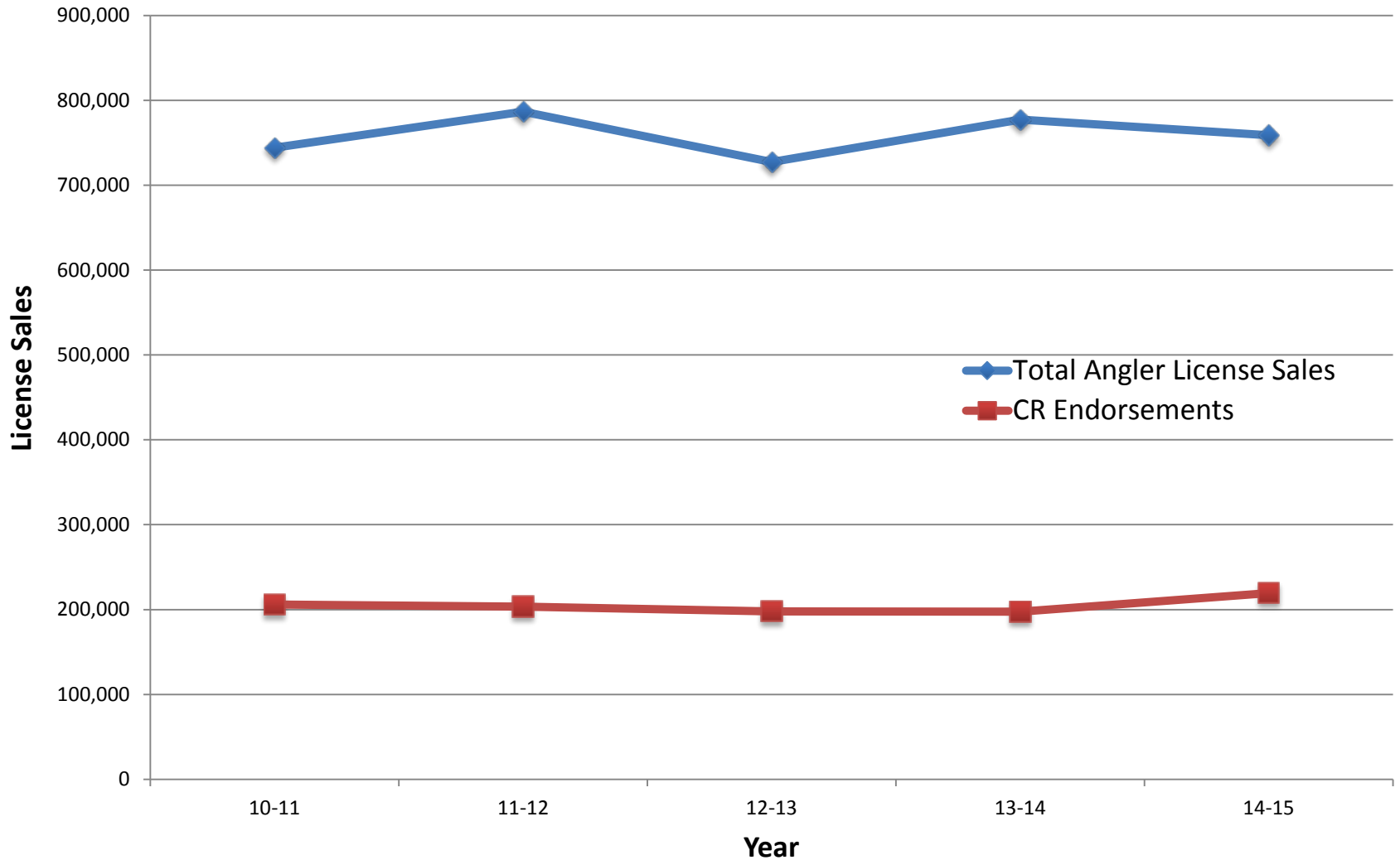
# Maximum Angler Trips/Year Hasn't Changed over last 15 Years, Despite New Policy



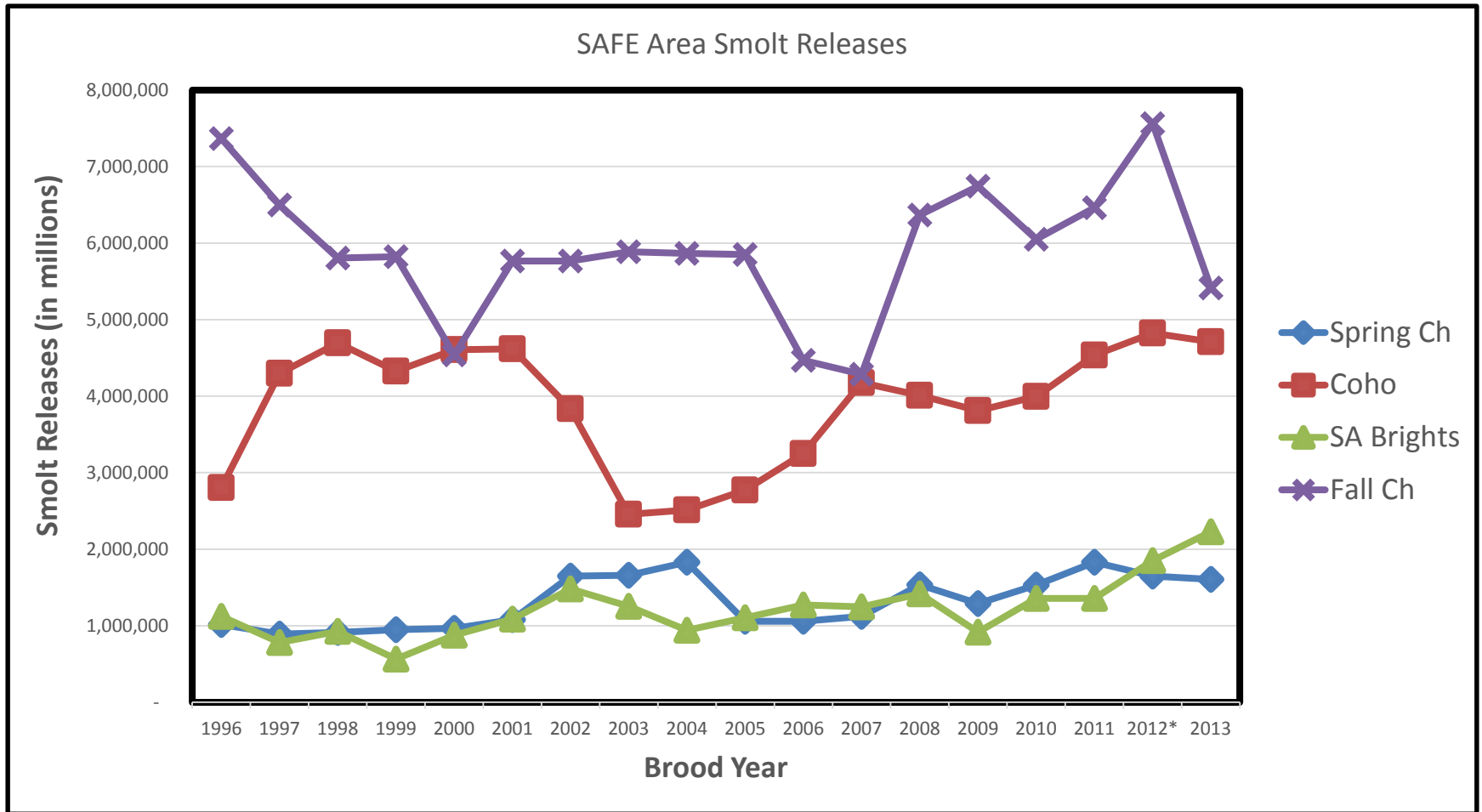
# Angler Trips per Day Haven't Increased Despite the New Policy



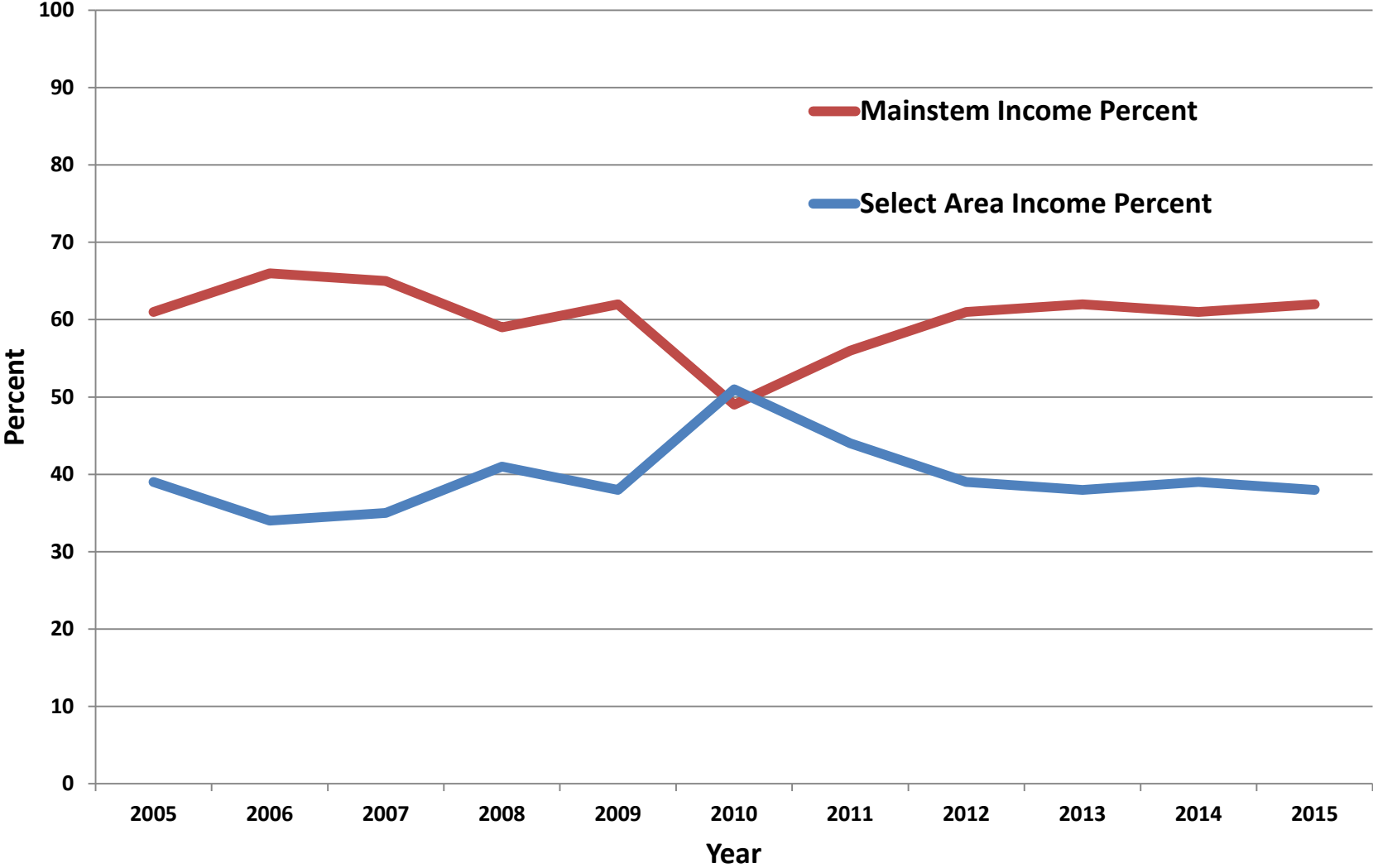
# Both Recreational Fishing License Sales and Columbia River Endorsement Sales Have Remained Flat Since Before the Policy



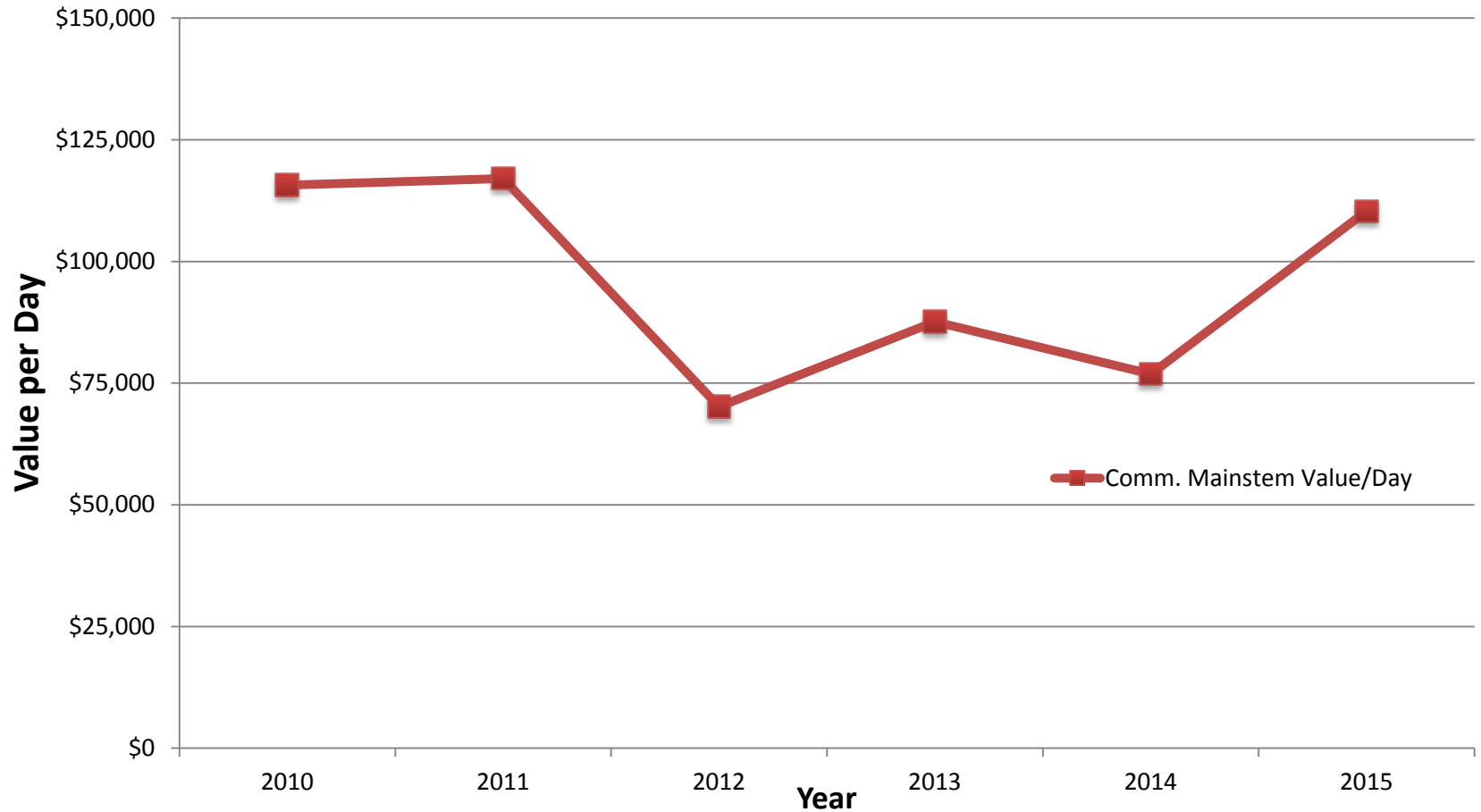
# Current Safe Area Smolt Releases of Spring, Bright (SABs) & Fall Chinook, and Coho, are Similar to 15 Years Ago



# Ex-Vessel Earnings from the Mainstem Fishery Consistently Represent 60-65% of the Total Income from All Areas

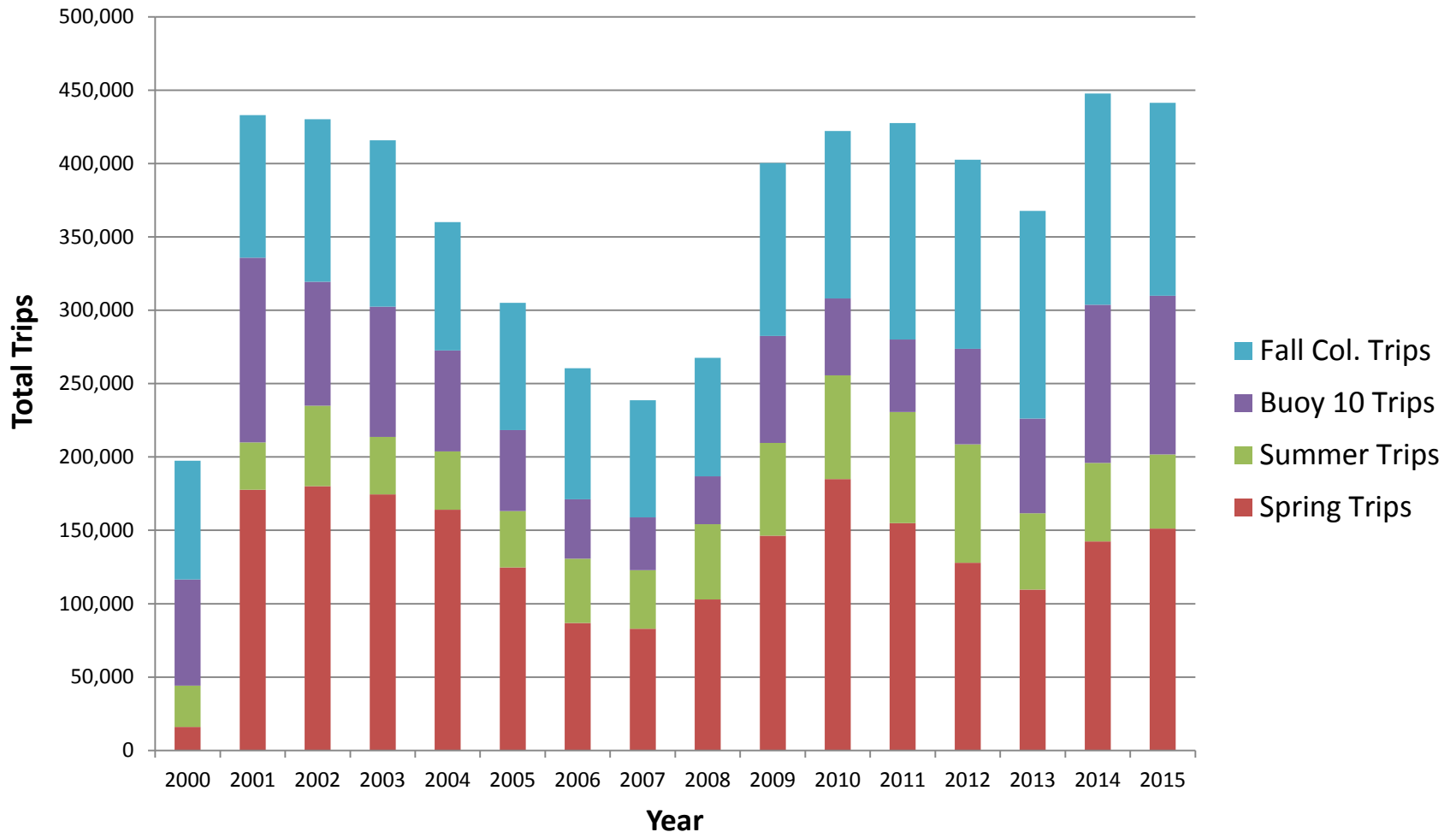


# The Average Ex-Vessel Value of a Mainstem Opening is an Immediate, Quantifiable Value to Lower River Communities





# Spring, Summer, Fall & Buoy 10 Angler Trips Below Bonneville Vary from Year to Year but the Maximum Hasn't Changed



# Spring-Summer-Fall-Buoy 10 Angler Trips Below Bonneville Have All Varied Annually Between 2000 and 2015, and Some Have Declined Since the Policy Despite Increases in Quota

