

Deer and Elk Management Objectives 2016 Review



June 9, 2016
Salem, OR

Management Objectives (MOs)

- **Brief history of the MOs process**
- **Description of MO development**
- **2016 MOs review process**



Deer and Elk Management Objectives

Two Types

- Winter range populations
- Buck and Bull ratios



Photo by M Reesman

Deer Management Objectives History



Photo by G. Torland

- **Commission adopted in 1982**
 - minimum post-season buck ratios
 - population MOs for eastern Oregon
- **Mule deer plan adopted 1990**
- **MOs revised in 2005**
- **No MOs for black-tailed deer**
 - Trend and ratios

Elk Management Objectives History

- **Commission adopted in 1981**
 - **Some eastern OR Wildlife Management Units (WMUs)**
- **Revised 1986**
 - **More WMUs**
- **Elk plan adopted 1992**
- **Elk MOs adopted for WMUs in 1994**
 - **except Alsea and Snake River**
- **Revised 2005**



Deer and Elk

Management Objectives Defined

Population MOs:

- Number of deer and/or elk ODFW strives to maintain in WMU
- Reflects wintering population or herd size

Buck and Bull Ratio MOs:

- Desired post-hunting season ratio = bucks:100 does or bulls:100 cows
- Adult males/100 adult females observed



Photo by R Swart

Population Management Objectives

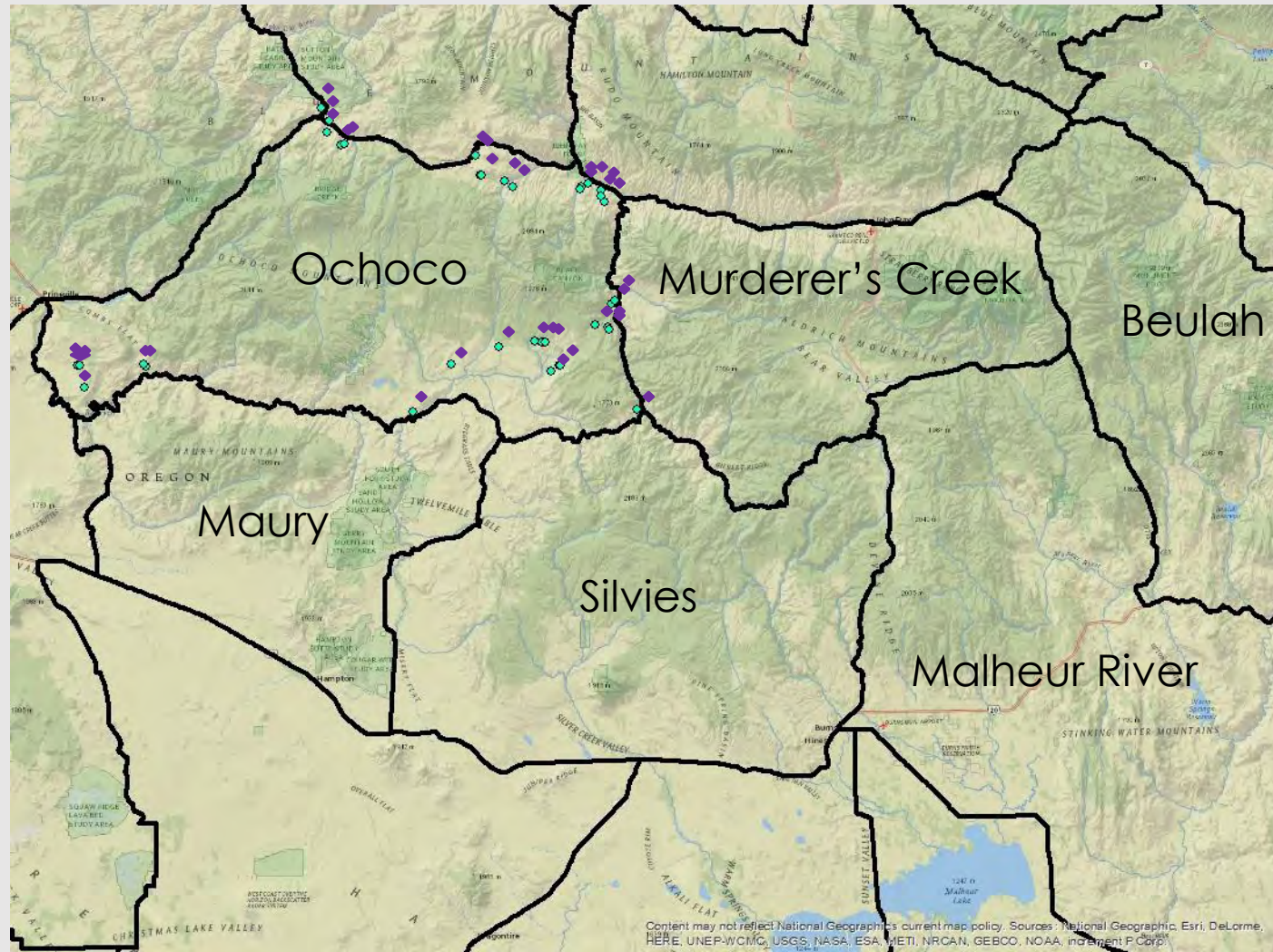
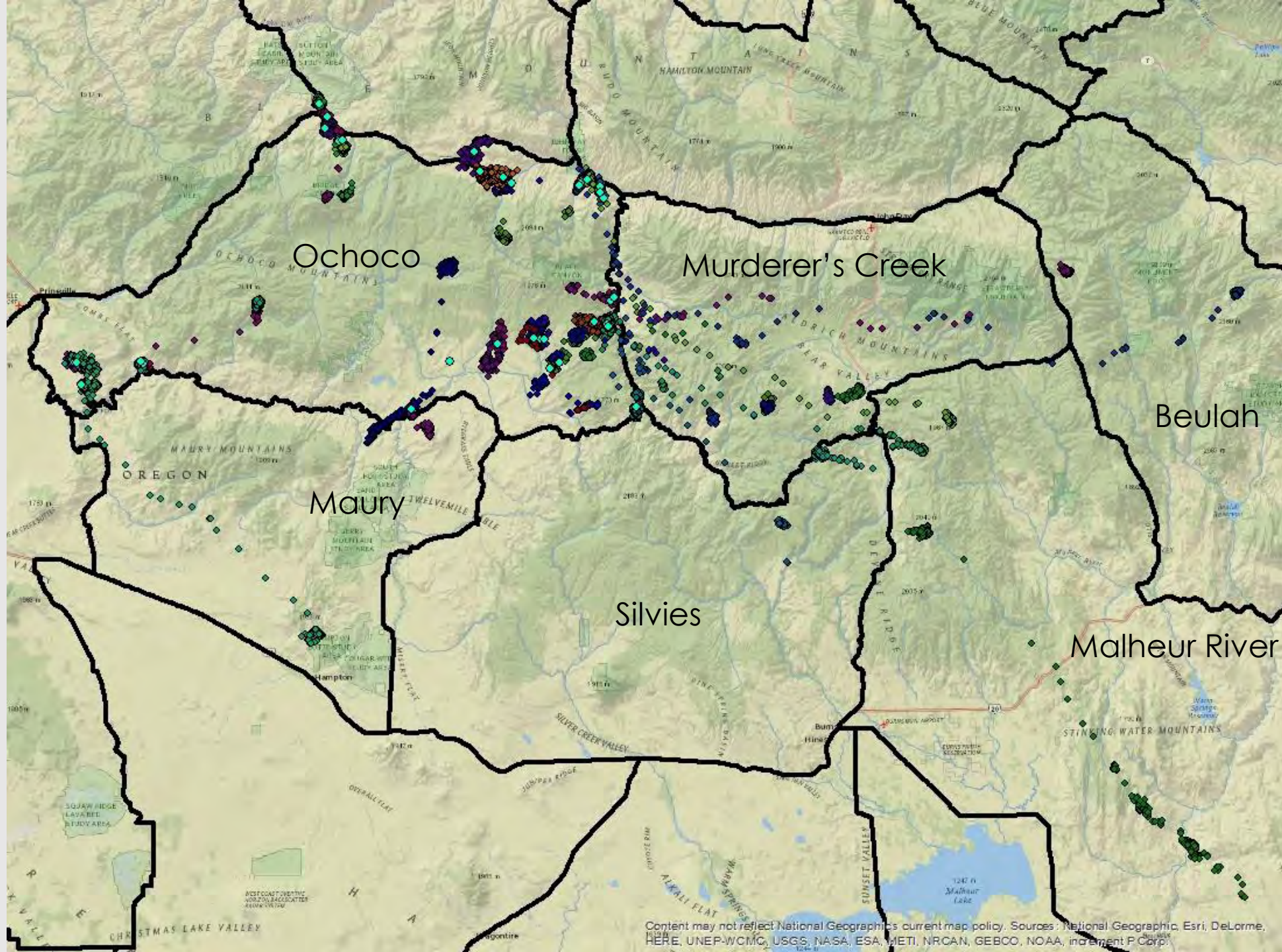


Photo by Nick Myatt



Ochoco

Murderer's Creek

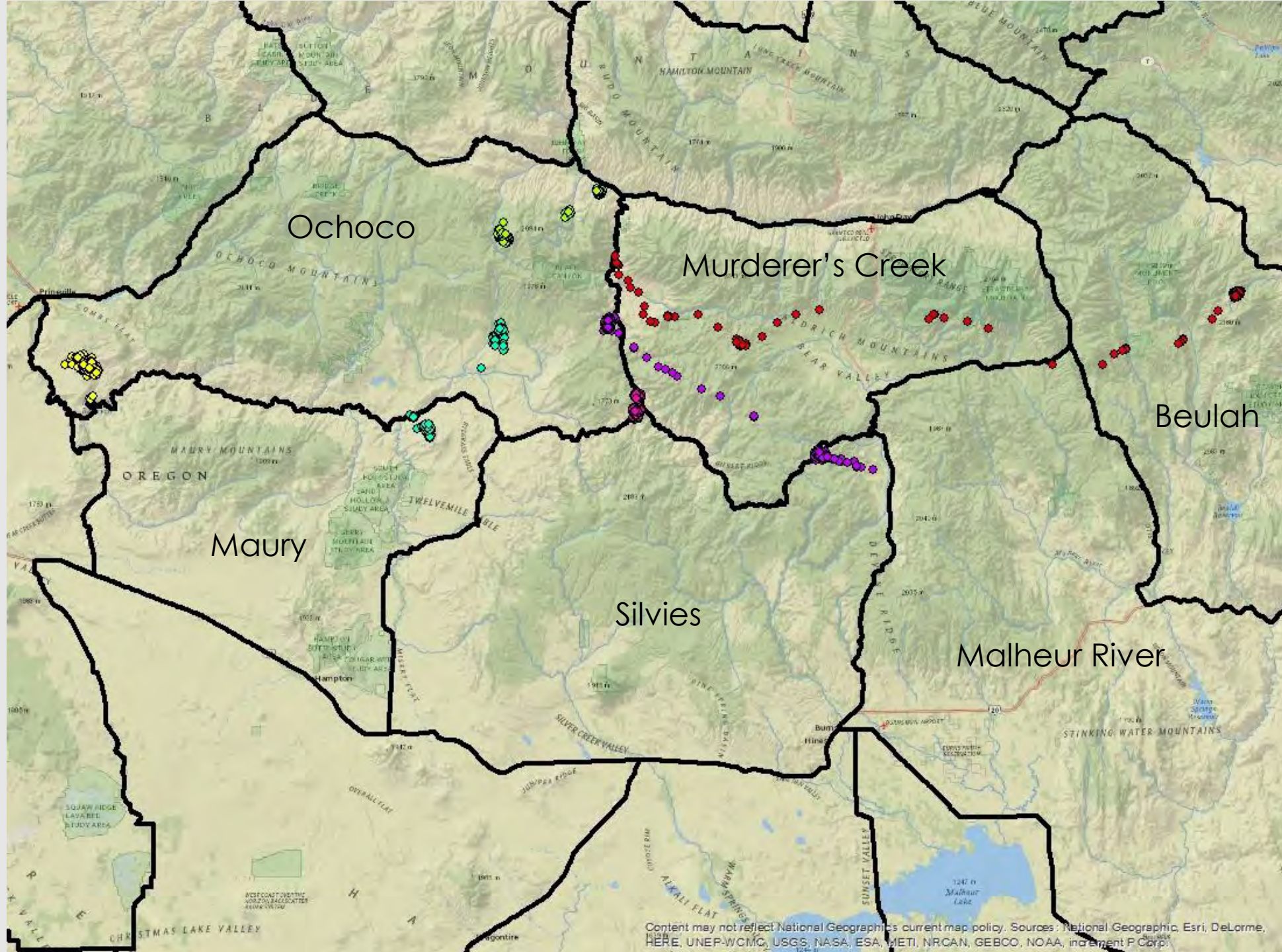
Beulah

Maury

Silvies

Malheur River

Content may not reflect National Geographic's current map policy. Sources: National Geographic, Esri, DeLorme, HERE, UNEP-WCMC, USGS, NASA, ESA, METI, NRCAN, GEBCO, NOAA, and iCubator P Corp.



Ochoco

Murderer's Creek

Beulah

Maury

Silvies

Malheur River

Population Management Objectives

- **Requires compromise**
 - **Prevent serious depletion of indigenous wildlife**
 - **Provide optimum recreational & aesthetic benefits**
 - **Maintain populations compatible with primary uses of the land**
 - **Habitat availability & carrying capacity**
 - **Damage to private property**
 - **Damage addressed above/below MO**



Buck and Bull Ratio Management Objectives

- **Complicated**
 - observed, post season
 - actual ratios > observed ratios
 - not what hunters observe
- **Buck Ratio: 12-25 bucks/100 does**
- **Bull Ratio: 10-20 bulls/100 COWS**



Photo by Jack Doyle



Photo by Nick Myatt

2016 Management Objective Review Process

- **District Biologists & Wildlife Division reviewed**
 - proposed changes
- **Local Review Committee (LRC)**
 - local hunter group representatives
 - landowners
 - land management agencies
 - Oregon State Police
 - other individuals
- **Approximately 183 participants: 20 LRC meetings**



Guidelines to Evaluate Management Objectives



Photo by Nick Myatt

- **Winter population MOs \neq hunting opportunity**
- **Do not raise (change) unachievable MOs**
- **Do not lower MOs just to achieve**
- **Avoid creating more than 1 MO in WMU**
- **Broad support to maintain/increase hunting**

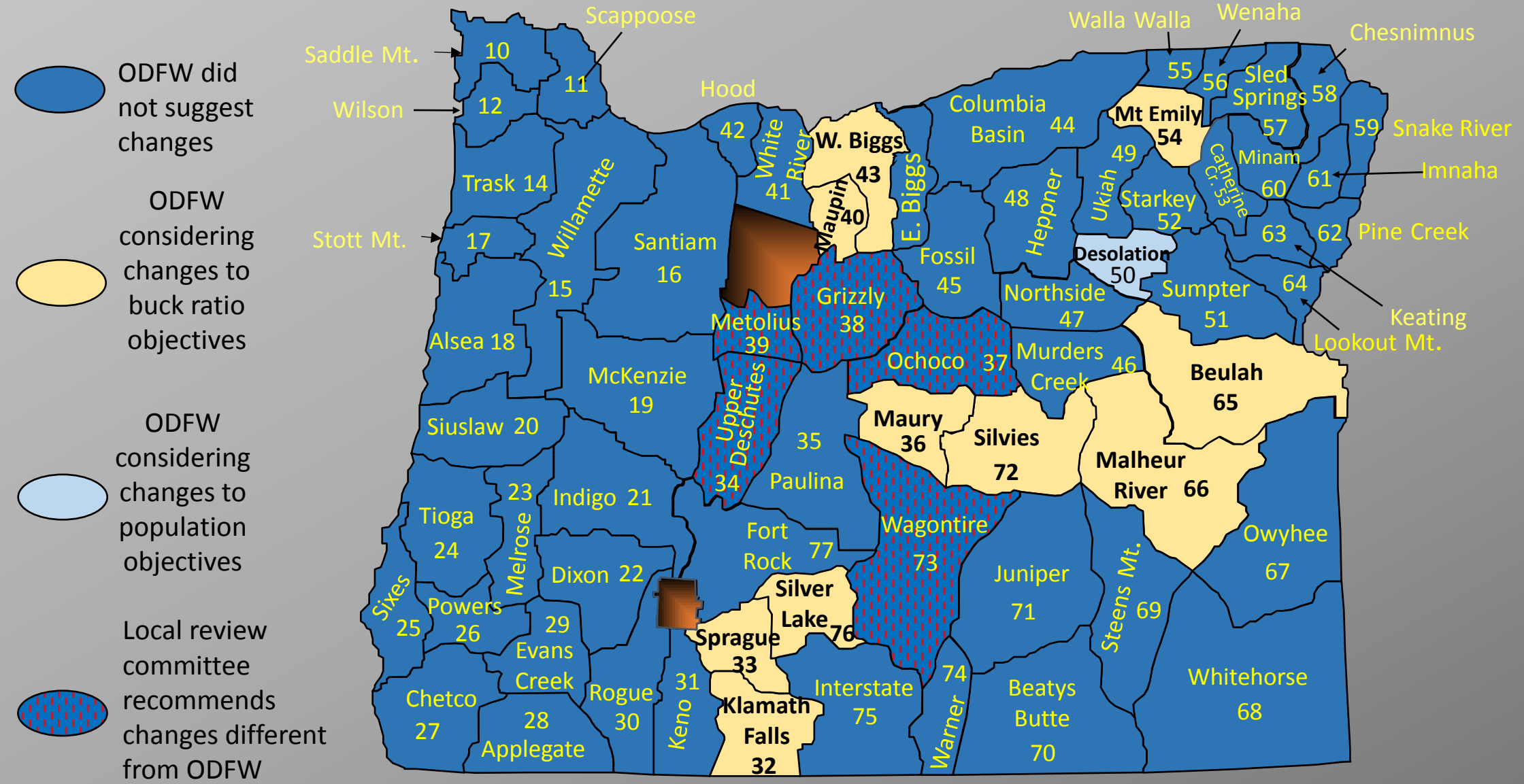
Principles of Opportunity

- **Changing MOs can change opportunity**
 - **Increasing Population MO will increase opportunity**
 - *only* if the population increases
 - **Increasing Buck or Bull MO will *decrease* opportunity (increase the number of years it takes to draw a tag)**
 - if the ratio is not already being met
 - **Increasing Buck or Bull MO *may* increase mature animals**
 - If tag numbers reduced, ratio improves, harvest doesn't target mature

Principles of Opportunity

- **General guideline:**
 - if recruitment, adult mortality, and controlled hunt applications constant
- IF buck:doe ratio 12 → 25: **tags cut in half**
 - twice as long to draw a tag
- IF bull:cow ratio 15 → 20: **tags reduced to 3/4**
 - 4 yrs. to draw becomes \simeq 6 years

Changes in Mule Deer Management Objectives Under Consideration



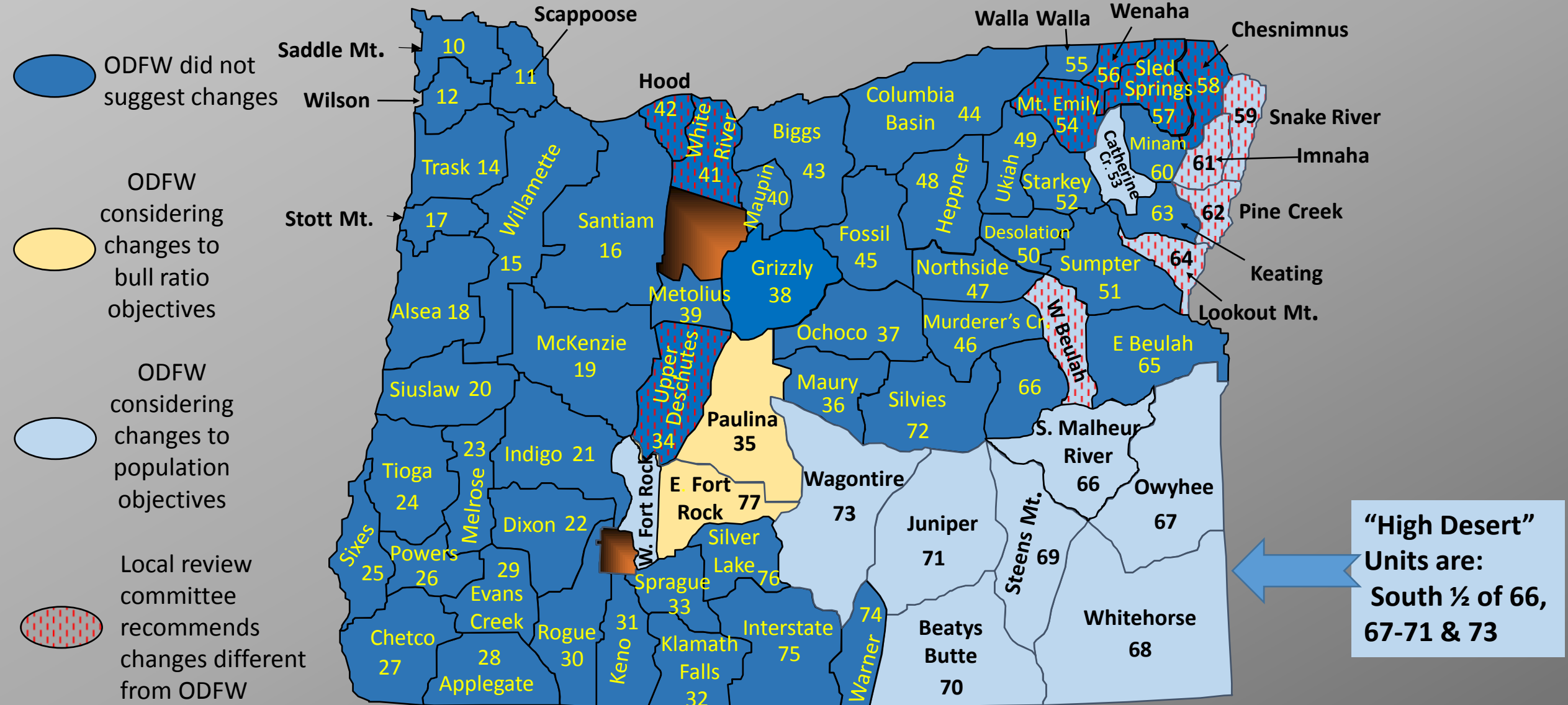
PROPOSED CHANGES TO MULE DEER MANAGEMENT OBJECTIVES (MO)

UNIT #	UNIT NAME	WINTER POPULATION MO			BUCK RATIO MO		
		CURRENT	ODFW PROPOSAL	LRC*	CURRENT	ODFW PROPOSAL	LRC*
54	MT. EMILY	5000	5000	5000	15	20	20
50	DESOLATION	2500	1500	1500	15	15	15
65	BEULAH	15000	15000	15000	12	15	15
66	MALHEUR RIVER	15000	15000	15000	12	15	15
72	SILVIES	12000	12000	12000	12	15	15
37	OCHOCO	20500	20500	20500	15	15	20
38	GRIZZLY	8500	8500	8500	15	15	20
36	MAURY	5200	5200	5200	15	20	20
43	WEST BIGGS	3300	3300	3300	12	15	15
40	MAUPIN	3000	3000	3000	12	15	15
39	METOLIUS	6200	6200	8000-9000	25	25	25
34	UPPER DESCHUTES	2200	2200	2000	15	15	15
76	SILVER LAKE	10300	10300	10300	12	15	15
33	SPRAGUE	2200	2200	2200	12	15	15
32	KLAMATH FALLS	6200	6200	6200	12	15	15
73	WAGONTIRE	2500	2500	6000 in north 1/2	15	15	15

*LRC = Local Review Committee **Red bold indicates LRC proposal differs from ODFW**

Bold Print indicates a proposed change

Changes in Elk Management Objectives Under Consideration



PROPOSED CHANGES TO ROCKY MOUNTAIN AND ROOSEVELT MANAGEMENT OBJECTIVES (MO)

UNIT #	UNIT NAME	WINTER POPULATION MO			BULL RATIO MO		
		CURRENT	ODFW PROPOSAL	LRC*	CURRENT	ODFW PROPOSAL	LRC*
61	IMNAHA	800	2000	1200-2200	15	15	15
53	CATHERINE CR	700	1000	1000	10	10	10
62	PINE CR	650	800	650	15	15	15
64	LOOKOUT MT	300	800	600	15	15	15
59	SNAKE RIVER	3800	4500	4500	15	15	20
58	CHESNIMNUS	3500	3500	3500	10	10	12, 15, 20
57	SLED SPRINGS	2750	2750	2750	10	10	15
56	WENHAHA	4250	4250	4250	15	15	20
54	MT EMILY	5700	5700	5700	10	10	15
65	WEST BEULAH	1300	500	500, 1000	15	15	15
35/77	PAULINA/E. FT ROCK	1600	1600	1600	20	15	15
21/77	INDIGO/W. FORT ROCK	4700	4500	4500	10	10	10
w77	WEST FORT ROCK (NEW)		200	200		10	10
42	HOOD	120	120	120	10	10	Raise
41	WHITE RIVER	1030	1030	1030	10	10	Raise
34	UPPER DESCHUTES	700	700	1000	10	10	10
**	HIGH DESERT	1000	1600	1600	20	20	20

*LRC = Local Review Committee **Red bold indicates LRC proposal differs from ODFW**

** High Desert Includes: Steens, Owyhee, Whitehorse, Beatys Butte, Juniper, Wagontire, and S. Malheur WMUs

Bold Print indicates a proposed change

2016 Management Objective Review Progress

- **ODFW's & LRC proposals on ODFW website**
- **May 2016 big game public meetings**
 - **Meetings held in 19 cities with >146 public attended**
 - **Hosted a twitter event with hunters**
- **ODFW staff will review all public comments and make recommendations to the Commission on August 5, 2016**

QUESTIONS?



Photo by S. Wray