

# Fish Restoration and Enhancement Program *"R&E"*

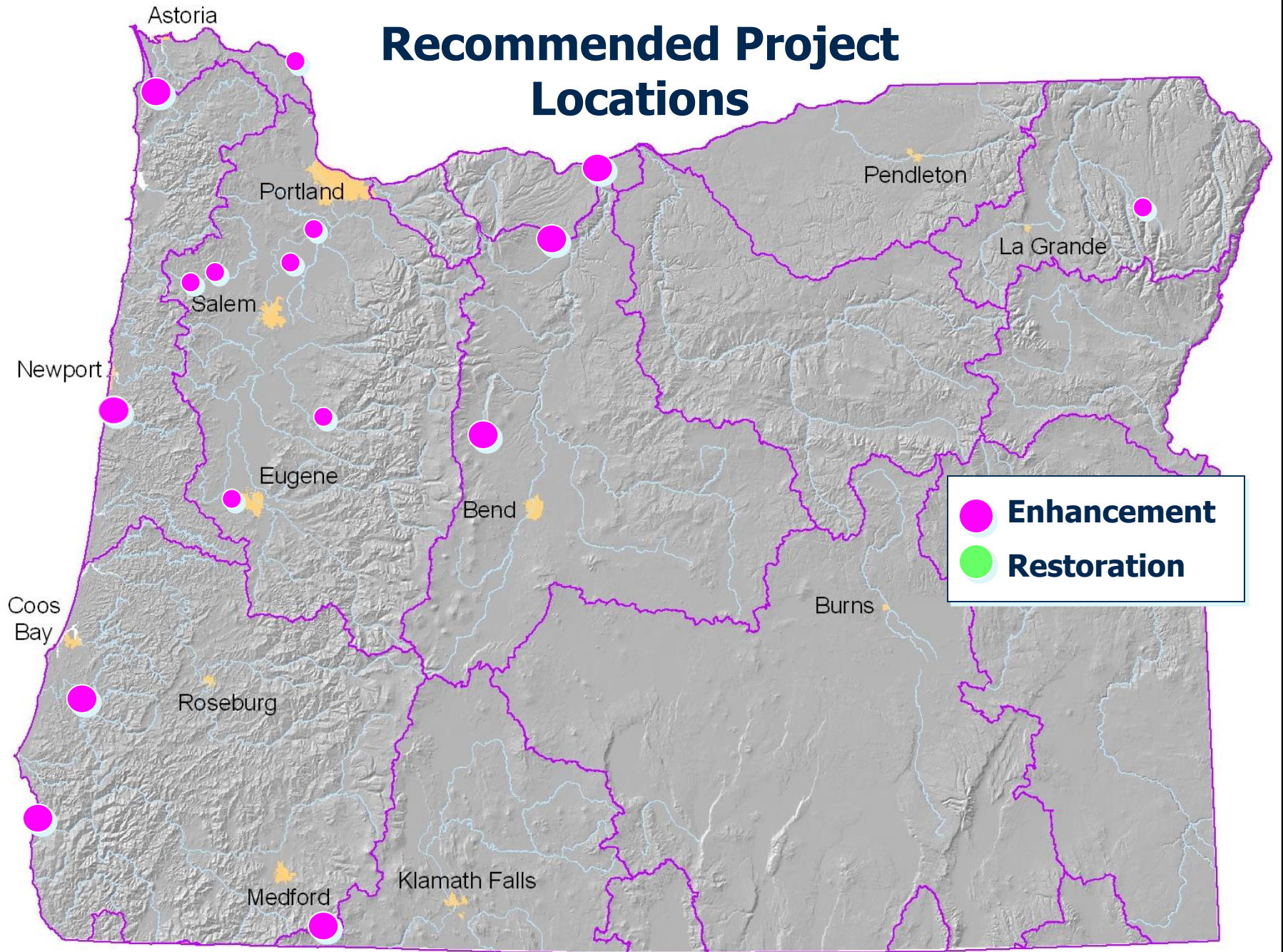
*Project Approvals  
2017-2019 Cycle 2 of 7*



*August 4, 2017  
Exhibit C*



# Recommended Project Locations





# Recommended Enhancement Projects

Project#	Project Name	Project Sponsor	Activity Type	R/E	S/C	R&E Funds	Match	Project Total	Vote
17-012	Mid-Columbia District Outboard Motor Replacement	ODFW - The Dalles Field Office	Monitoring	E	S/C	\$18,000.00	\$0.00	\$18,000.00	7Y,0N
17-013	ODFW Angler Access Improvements 2017-2019	ODFW - Roseburg Field Office	Access	E	S	\$109,977.00	\$175,126.00	\$285,103.00	7Y,0N
17-015	Arizona Pond Sediment Removal 2017	ODFW - Gold Beach Field Office	Access	E	S	\$36,306.00	\$14,195.00	\$50,501.00	7Y,0N
17-016	Spring Creek Acclimation & Youth Angling Pond Phase 2	ODFW - Bend Field Office	Access	E	S	\$137,250.00	\$51,450.00	\$188,700.00	7Y,0N
17-018	Alsea River Steelhead Angler Vulnerability Study	ODFW - Newport Field Office	Research	E	S	\$122,648.00	\$30,673.00	\$153,321.00	7Y,0N
17-019	Necanicum River Winter Steelhead Evaluation Project	ODFW - Tillamook Field Office	Monitoring	E	S	\$60,250.00	\$8,780.00	\$69,030.00	7Y,0N
17-021	Pine Hollow Reservoir North Ramp	South Wasco Park & Recreation District	Access	E	S	\$93,750.00	\$323,490.00	\$417,240.00	7Y,0N
17-023	Comparison of Trout Stocks at Howard Prairie Phase 3	ODFW - Central Point Field Office	Monitoring	E	S	\$9,000.00	\$3,072.00	\$12,072.00	7Y,0N
17-024	Coquille Working Landscapes Project China Camp Creek (C3P) Tidegates	ODFW - Charleston Field Office	Habitat Restoration	E	S/C	\$200,000.00	\$10,015,827.00	\$10,215,827.00	7Y,0N
<b>ENHANCEMENT PROJECT TOTALS</b>						<b>\$787,181</b>	<b>\$10,622,613</b>	<b>\$11,409,794</b>	



# 17-015 Arizona Pond





# R&E Budget Status

## 2015-2017 Biennium

	Total Recommended	Limitation	Previously Approved Projects	Award Percent Once Approved	Remaining Funds Once Projects are Approved
Restoration	\$0	\$2,210,000	\$2,420,788	62%	
Enhancement	\$787,181	\$2,210,000	\$735,554	38%	
<b>TOTAL</b>	<b>\$787,181</b>	<b>\$4,420,000</b>	<b>\$3,156,342</b>		<b>\$476,477</b>

# Staff Recommendation:

Approve R&E Board recommendations.



# R&E Program Background

## **DEDICATED FUNDING SOURCES:**

Recreational angling licenses:	\$1-10 surcharge (\$4 for annual resident)
Ocean troll (salmon) permit:	\$65
Columbia River gillnet (salmon) permit:	\$74
Commercial poundage fee:	\$0.04

**COMMERCIAL (Salmon) = 8.5%**                      **RECREATIONAL = 91.5%**

ORS 496.289

(5) “Such amounts may be expended: On programs benefiting the commercial fishing industry in the same proportion as revenues received..”

**RESTORATION = 50%**                                      **ENHANCEMENT = 50%**

ORS 496.289

(4) In recommending fish restoration and enhancement programs, the board shall:

(a) Recommend a mix of projects that provide a balance between restoration enhancement benefits.

# Sources of R&E Funding

## Surcharges and fees:

- Resident annual angling license: \$4
- Ocean troll (salmon) permit: \$65
- Col. R. gillnet (salmon) permit: \$74
- Commercial poundage fee: \$0.05

## Estimated Revenue 2013-15

Commercial landing fee - 5%	\$225,000
Commercial permits - 4%	\$175,000
Recreational license - 91%	\$4,242,000
<b>REVENUES TOTAL</b>	<b>\$4,642,000</b>

Sport and Commercial Spent in proportion to revenue





# R&E Project Types

Spending is split equally between these categories.

## Restoration

"Restore Investment"

"Brick and Mortar"

- Hatchery restoration
  - repair and maintenance
- Liberation equipment
- Modify existing fishways and screens

## Enhancement

"Enhance Fisheries"

"Anything new"

- Angler access
- New fishways & screen
- Habitat improvement
- New hatchery equipment & technology
- Education
- Aquatic Inventories
  - Research and monitoring
  - Creel and stream survey

# R&E Project Types (E)

## Aquatic Inventories

## Fish Habitat





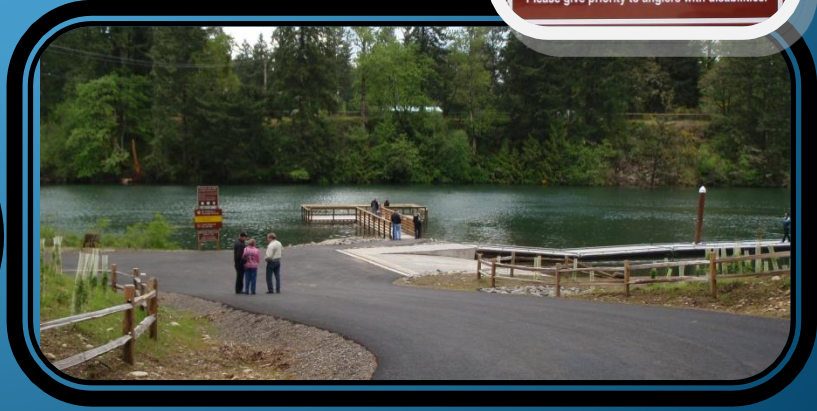
# R&E Project Types (E)

Public Education

Angler Access



**Moo's Dock**  
This ADA accessible fishing dock was inspired by Kathy Arrigo (Moo) and made possible by contributions from:  
ODFW's Restoration and Enhancement Program  
Oregon Wildlife Heritage Foundation - Beulah Drake Fund  
RD Supply  
Emil W. & Lois E. Brannum of The Oregon Community Foundation  
Association of NW Steelheaders  
Pacific States Marine Fisheries Commission  
Portland General Electric  
Electro-Mechanical Corp.  
Kim MacColl, Jr.  
Dodie & Gordon Kling  
Oregon State Parks  
CWRP - Steffen Oest  
Please give priority to anglers with disabilities.





# R&E Project Types (R or E)

## Fish Passage

## Fish Screening





# R&E Project Types (R or E)

## Hatchery Restoration and Improvements

### Liberation Equipment

