



# Willamette Wildlife Mitigation Agreement

Dorie Welch

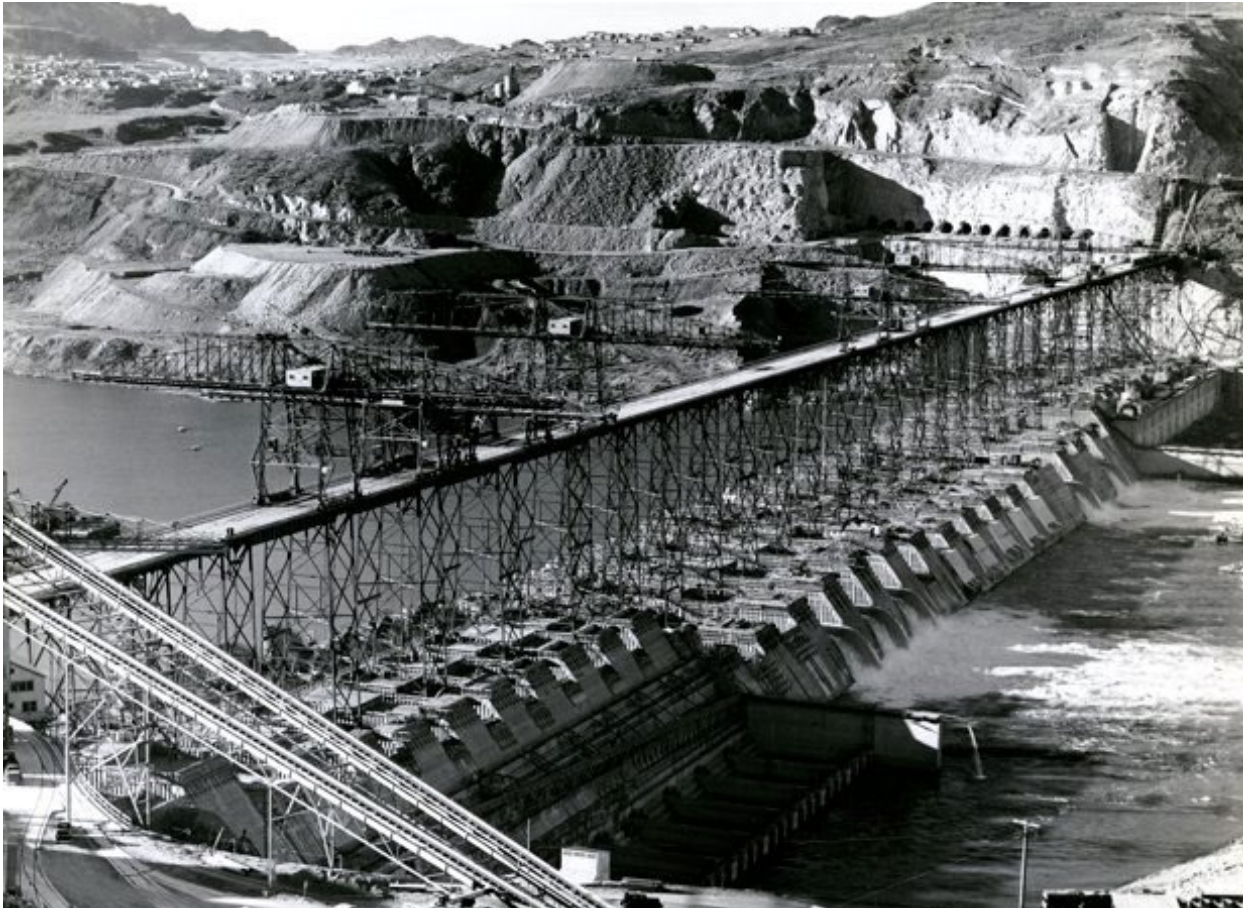
Deputy Vice President - Environment, Fish and Wildlife

Bonneville Power Administration

October 9, 2020



# Construction and inundation effects from FCRPS dams: >376,000 acres





# The Willamette Basin

## LEGEND

- Re-regulating Dams
- Multi-purpose Projects
- Section 7 (non-Federal)



# 10 years of the WWMP

- ✓ Successfully meeting Agreement goals
- ✓ Paving the way for similar agreements
- ✓ Continuing an excellent partnership with ODFW
- ✓ Ensuring tribal and stakeholder involvement through an inclusive and collaborative approach
- ✓ Implementing high-quality projects through a rigorous selection process
- ✓ Leveraging cost share helps us make an even bigger impact
- ✓ Adaptively managing the Program for continued success