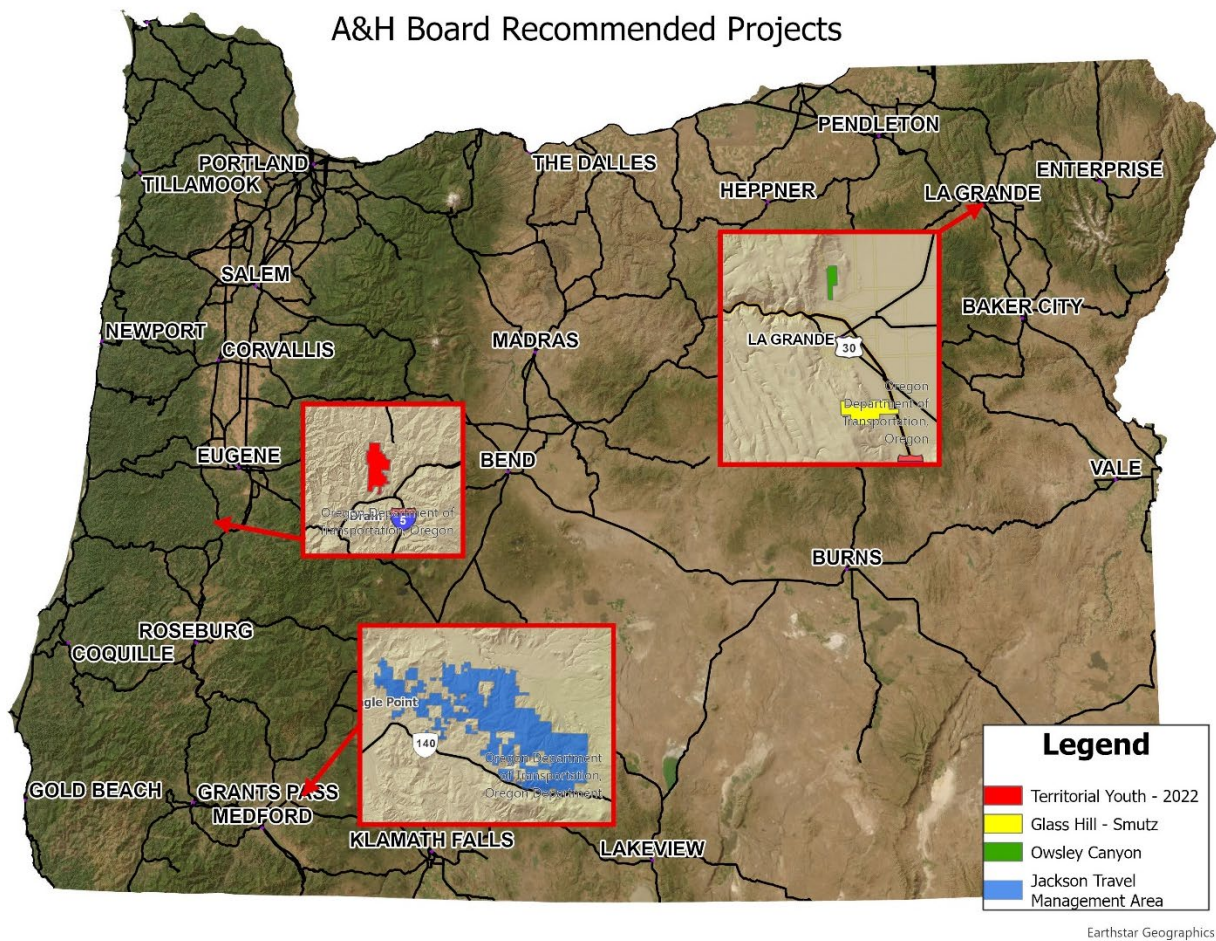


Summary of Projects Recommended for Access & Habitat Funding

The Access and Habitat (A&H) Board met on July 15, 2024 in Salem to review projects recommended for funding by A&H Regional Councils (Councils). A project must receive at least four supporting votes from the Board to be recommended for funding through the Oregon Fish and Wildlife Commission. A brief description of the funding requested, access and habitat benefits provided, as well as Council and Board votes follows. The A&H Board recommends funding the following four projects:



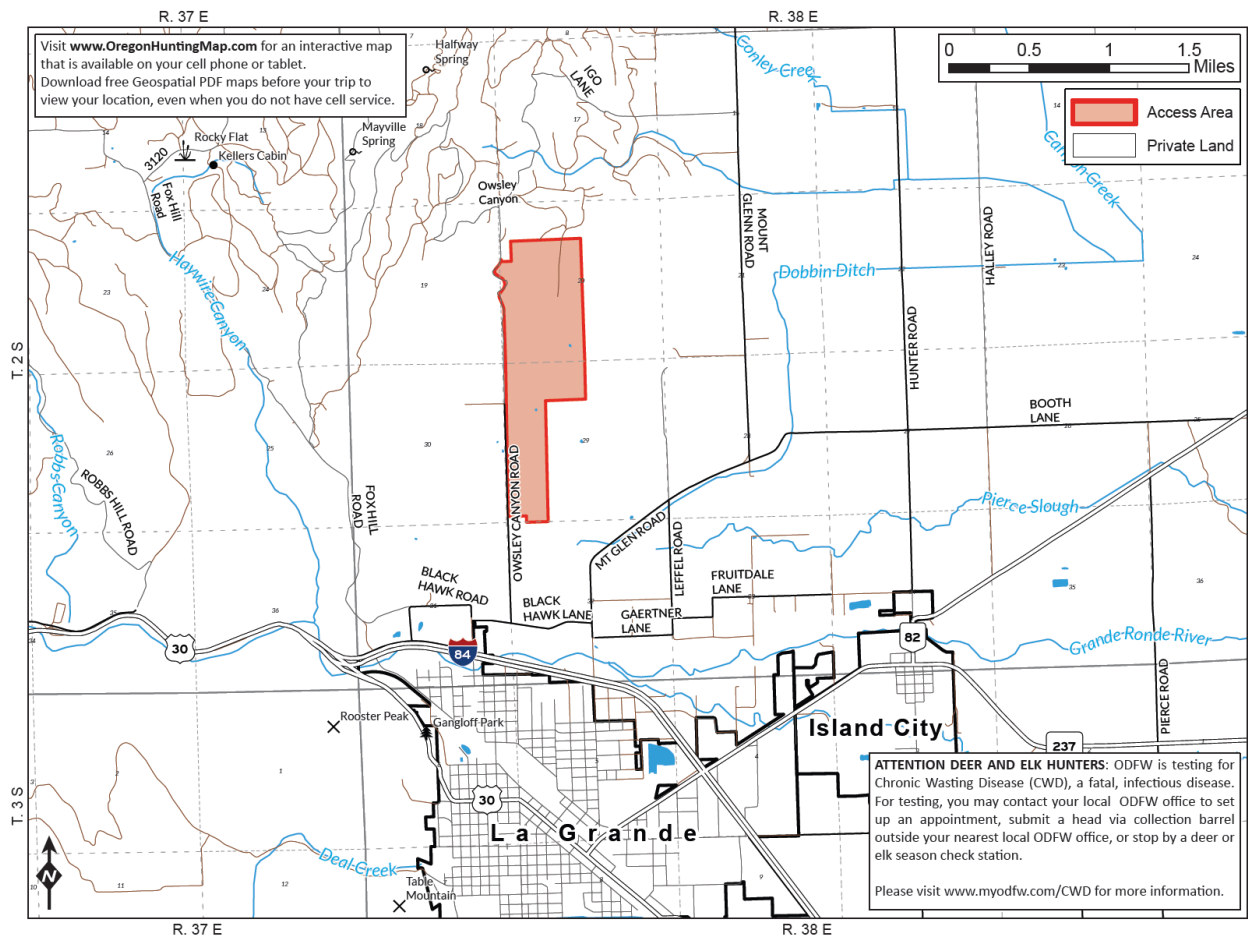
2024-04 Owsley Canyon Access Area

- A&H Funds: \$2,610
- Applicant: Luke Shaw
- Location: Mount Emily WMU
- Access Acres: 435
- Project Duration: August 2024 - January 2027
- Board Vote: Yes: 7; No: 0

This is a renewal of a project started in 2009. This project proposes to continue to pay Luke Shaw \$2.00/acre for “Welcome to Hunt” access on 435 acres of private land in the east Mt. Emily Wildlife Management Unit for a period of three years to hunt big game and upland game birds. Available species include mule deer, Rocky Mountain elk, bear, cougar, ruffed grouse, Hungarian partridge, turkey, pheasant, and California quail.

This area of the east Mt. Emily Unit has a long-standing history of chronic elk damage. All adjacent private lands are either managed as rangeland or are being utilized for commercial row crop production. Increasing hunter access to this parcel of private land will assist the department’s efforts to influence elk distribution in this area and reduce agricultural damage.

Owsley Canyon map

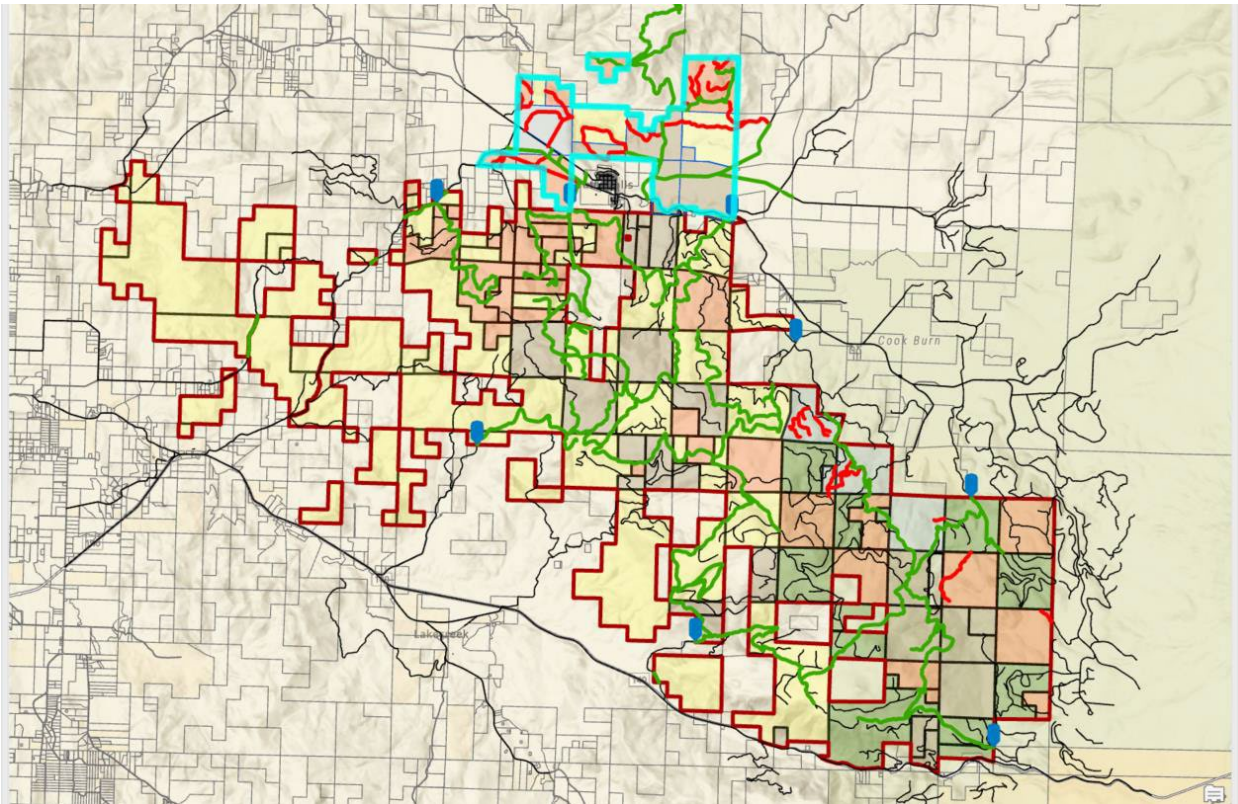


2023-07a Jackson TMA Amendment

- A&H Funds: \$6,323 (Additional funds)
- Applicant: Lone Rock Resources, Manulife, Silver Butte Timber
- Location: Siuslaw WMU
- Access Acres: 3,513 (Additional acres)
- Project Duration: October 2024 - June 2025
- Board Vote: Yes: 7; No: 0

This is an amendment to the agreements for the Jackson TMA to increase the acreage and payments for the project. The additional acreage is comprised of 3,513 acres of private industrial timberlands and 1,150 acres of public lands, total access acres are increased to 50,677 (21,125 private; 29,552 public). The payment for access to the additional private acres will be at the rate of \$1.80 per acres consistent with the original agreement. The amendment increases the payment and must receive Board and Commission approval prior to amending the agreements with the landowners.

Jackson TMA Map



New boundary is highlighted in teal. This encompasses private industrial timberlands near the town of Butte Falls.