

Oregon's approach to fish and wildlife adaptation

Holly Michael

Oregon Department of Fish and Wildlife

Sara O'Brien

Defenders of Wildlife

Climate change and wildlife in Oregon

- Multiple impacts
- Multiple scales
- Multiple approaches



American avocet
Photo: Bruce Taylor

This is bigger than us

Natural resources competing with many other essential values and needs

- Human health and safety
- Infrastructure and transportation
- **Water** for agriculture
- **Water** for communities
- Economic stability and societal values

Fish, wildlife and habitat are a few pieces of a very complex puzzle

- We must be tangible, relevant and strong collaborators in a bigger arena
- Public understanding and support essential

Climate Work at Multiple Scales

National

- Landscape Conservation Cooperatives
- National CC Wildlife Science Center
- Regional Integrated Sciences & Assess.

Western States

- Western Governors Wildlife Council
 - Decision Support System
 - Climate Adaptation policy workgroup
- PNW Climate DS Consortium (RISA)
- PNW Climate Science Center (NCCWSC)
- 3 LCC's in Oregon

Oregon

- Global Warming Commission
- Adaptation Framework



ODFW Efforts

- Oregon Conservation Strategy
- DSS pilot project
- F&W Commission climate policy
- All agency plans include climate
- Guide to F&W Adaptation (policy)
- Research - focus on baseline data
- CSC, PNWCC, TNC, U of W, others



Photo: Bruce Taylor

Oregon Global Warming Commission

Fish and Wildlife Subcommittee

- 19 members from agency, research, and conservation communities
- Conceptual framework
- Focus on Oregon Conservation Strategy
- Need for policy review, greater collaboration
- Identified research needs

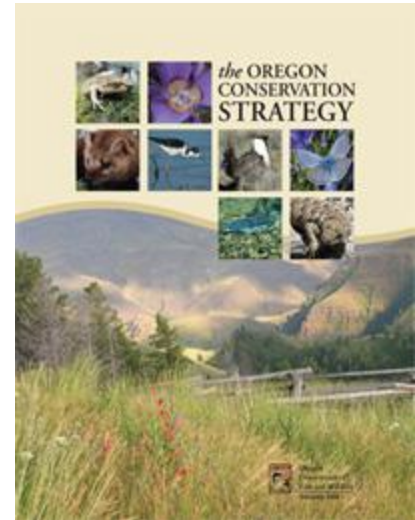
**Preparing Oregon's Fish,
Wildlife, and Habitats for Future
Climate Change:**
A Guide for State Adaptation Efforts

Subcommittee on Fish, Wildlife, and Habitat Adaptation
Oregon Global Warming Commission



Oregon Conservation Strategy Revision

- Climate change as key conservation issue
- Workshops
 - Estuaries
 - Oak savannas and woodlands
 - Sagebrush
- Strategy habitat fact sheets
- Species vulnerability assessment



UW Climate Sensitivity Database

Aegolius funereus

[View](#) [Edit](#) [Revisions](#) [Track](#) [Dev load](#) [Dev render](#)

Title: *

Common Name:

Enter known common names, one name per line.

This Species is Completed

Taxonomy	
Dispersal Ability	Average annual dispersal distance: <input type="radio"/> N/A <input type="radio"/> >100 km <input type="radio"/> 75-100 km <input type="radio"/> 50-75 km <input type="radio"/> 25-50km <input type="radio"/> 5-25km <input type="radio"/> 1-5km <input checked="" type="radio"/> <1km
Disturbance Regimes	Confidence in average annual dispersal distance: 2 Medium-Low ▼
Generalist/Specialist	
Physiology	
Life History Information	
Habitat	
Ecological Climate Effects	
Subjective ranking	Do barriers to dispersal exist?: 2 ▼ Are there landscape elements that would prevent this species from moving in response to climate change? Some examples of such barriers are given in the checklist below.
Menu settings Not in menu	Confidence in barriers to dispersal exists: 4 Medium-High ▼
Revision information New revision	
Comment settings Read/Write	
URL path settings Alias: species/aegolius-funereus	
XML sitemap Inclusion: Default (included) Priority: Default (0.5)	Specific dispersal distance, (if known) and dispersal type (juvenile, adult, etc.): <input type="text"/>

Please select all general types of barriers to dispersal that apply:

Estuaries workshop

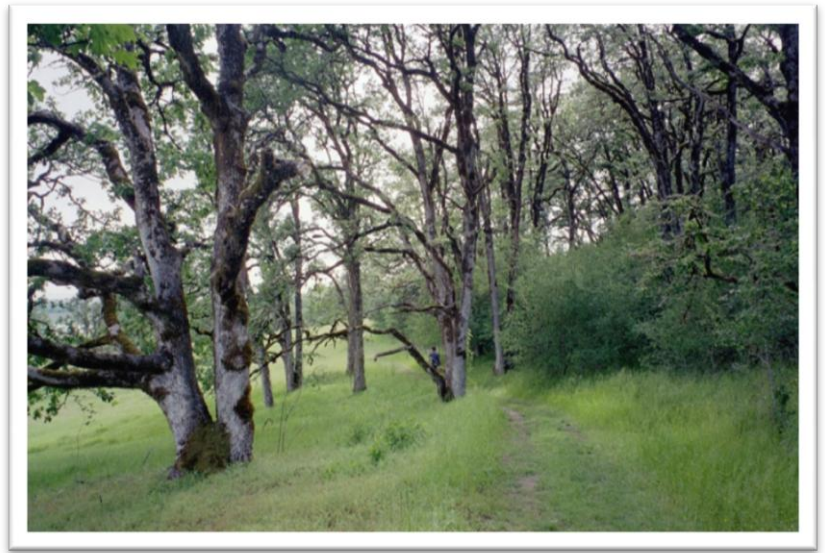


Elk River Spit
Photo: Bruce Taylor

- Familiar tools remain useful
- Importance of land use planning
- Multiple climate change impacts
- Need for science translation and synthesis products
- Adaptation is already in progress

Oaks workshop

- What do we want Oregon's oak habitats to look like in 50 years?
- Does climate change affect our goals?
- What tools, policies, and information will we need to get there?



Baskett Slough
Photo: Bruce Taylor

Links

ODFW Conservation Strategy

<http://www.dfw.state.or.us/conservationstrategy/>

Adaptation workshop documents

<http://www.dfw.state.or.us/conservationstrategy/events.asp>

PNW Climate Decision Support Colloquium

<http://pnwclimate.org/>

PNW Climate Science Center

<http://pnwclimate.org/departments-of-the-interior-climate-science-center>

Landscape Conservation Cooperatives

<http://www.fws.gov/science/shc/lcc.html>