

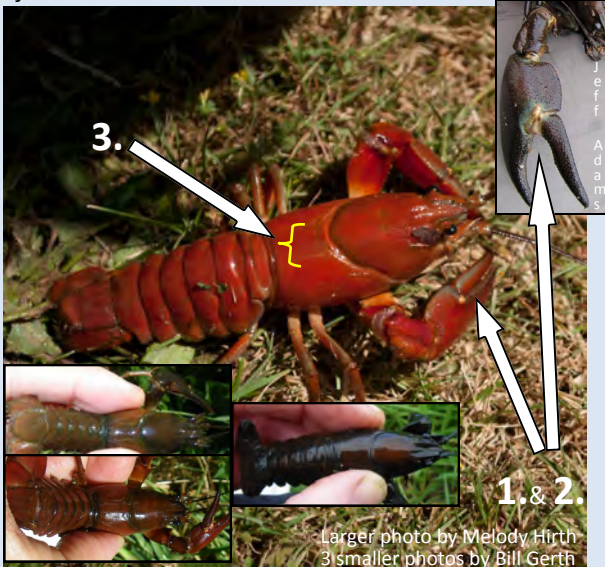
# Crayfish found in Oregon

\*Note: Colors vary for all crayfish and one should look for the key characteristics associated with the arrows

## Native to Pacific Northwest

### Signal Crayfish

*Pacifastacus leniusculus*



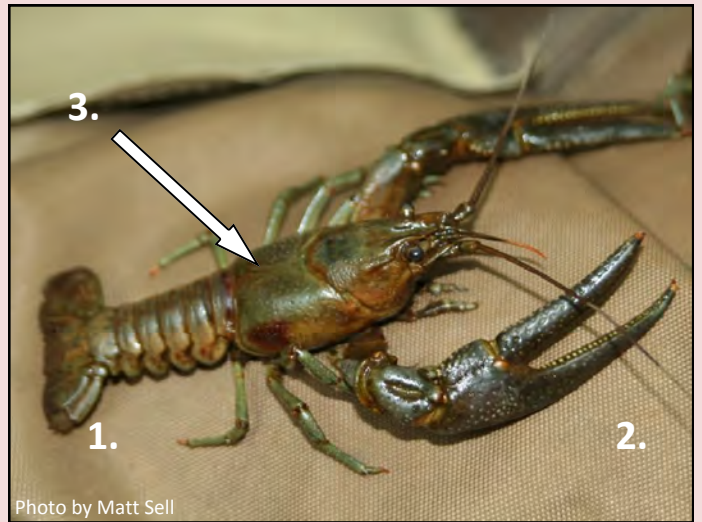
Identified by:

- Claws are smooth; lack bumps
- White "signal" spot on claw pivot
- Wide body plate on the back

## Invasive from Ohio and Kentucky

### Rusty Crayfish

*Orconectes rusticus*



Identified by:

- Large reddish-brown (rusty) spots on sides of body plates
- Claws have bumps
- Thin body plate on the back

## Invasive from Louisiana

### Red Swamp Crayfish

*Procambarus clarkii*



Identified by:

- Large bumps located on body plates and claws
- Lacks the body plate located on the back completely

## Invasive from the Great Plains

### Ringed Crayfish

*Orconectes neglectus*



Identified by:

- Claws have orange tips and black bands
- Thin body plate on the back
- Dark markings on sides of tail

In Oregon, call 1-866-INVADER or go to [OregonInvasivesHotline.org](http://OregonInvasivesHotline.org)  
In other states, contact the National Invasive Species Hotline: 1-877-STOP-ANS