

Oregon's Mid-C Steelhead Conservation & Recovery Plan: Implementation Status



Adrienne Averett

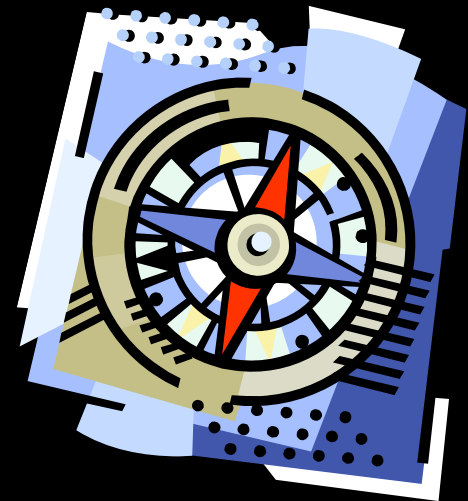


Bi-State Middle Columbia Implementation Forum Meeting

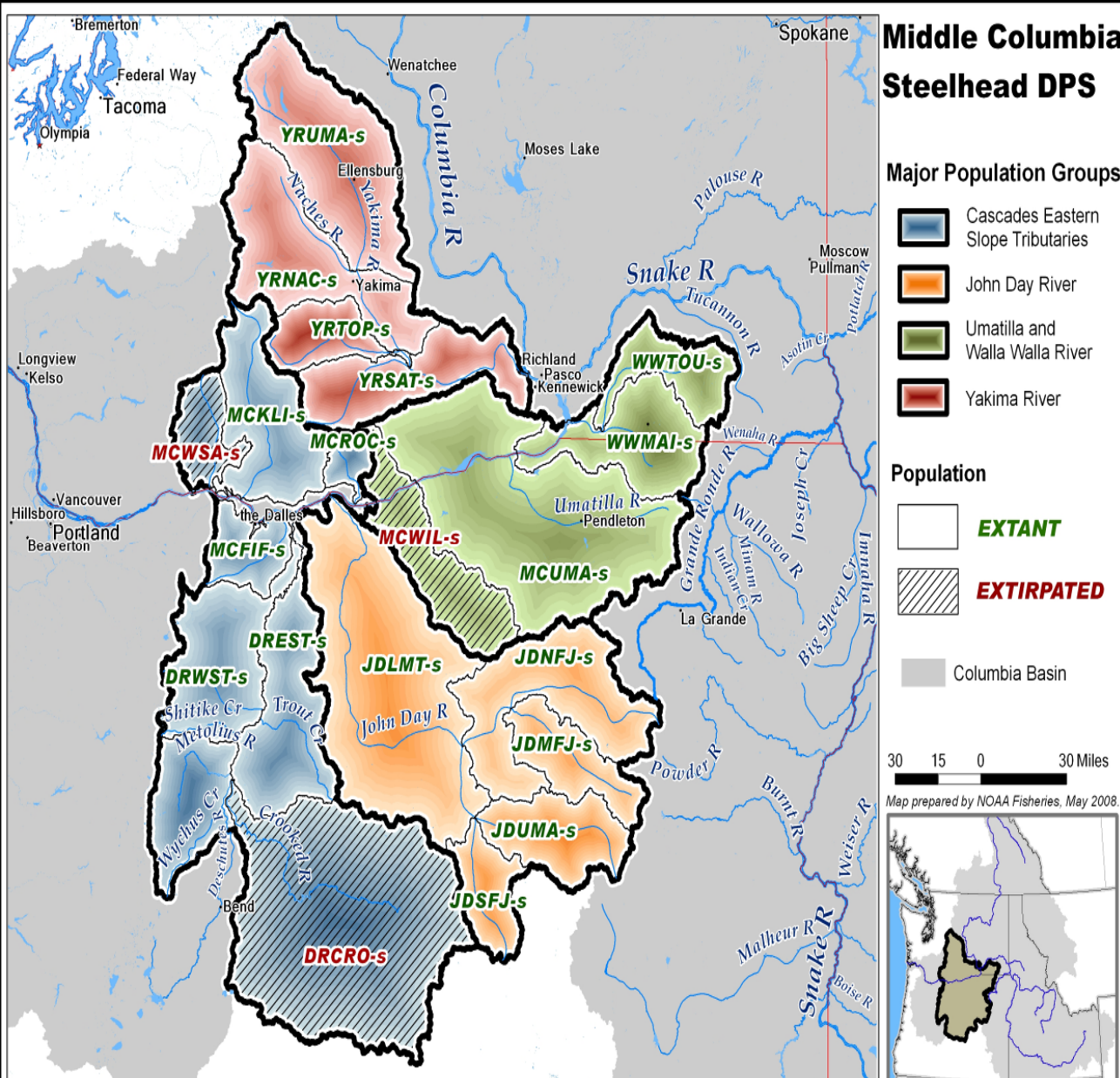
6 June 2011

Presentation Outline

- Background
 - Oregon Management Unit (MU)
 - OR Mid C Steelhead Conservation & Recovery Plan
- Plan Implementation
 - Current status
 - Next steps



Mid-C Steelhead Distinct Population Segment

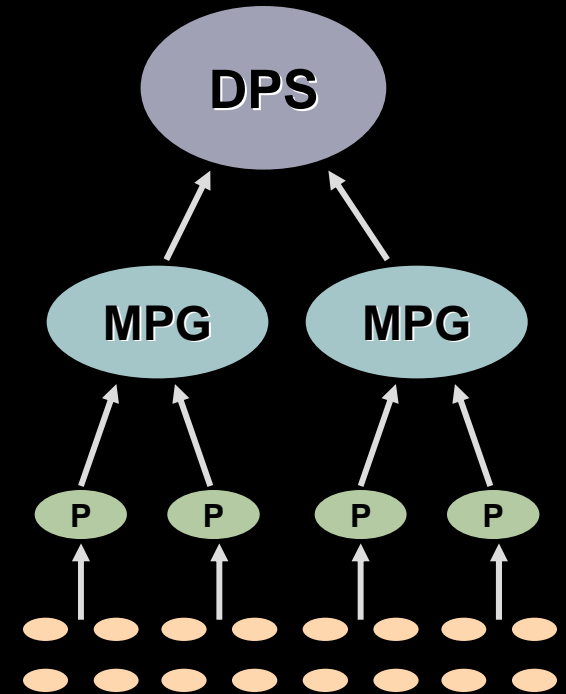
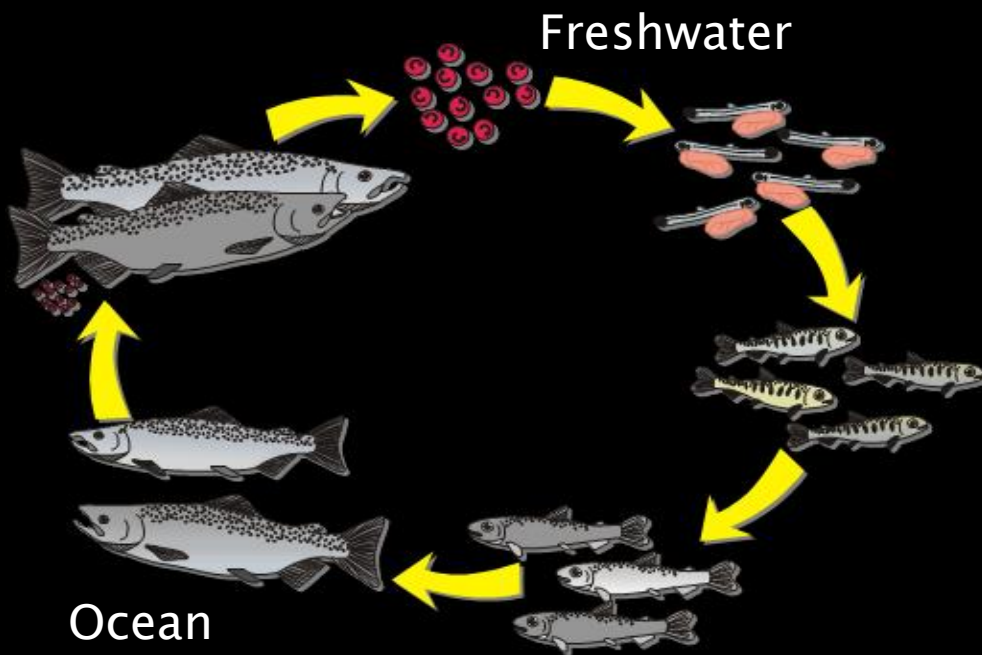


Oregon MU

- 3 MPGs
- 10 listed populations
- 2 extinct populations

OR Mid C Steelhead Recovery Plan

- Broad technical, stakeholder and public involvement
- Based on existing work and solid science
- Considered the full life cycle and all “Hs”
- Meets ESA and OR NFCP requirements
- A “Living”, non-regulatory, guidance document



OR Mid-C Recovery Plan Implementation: Plan to Process

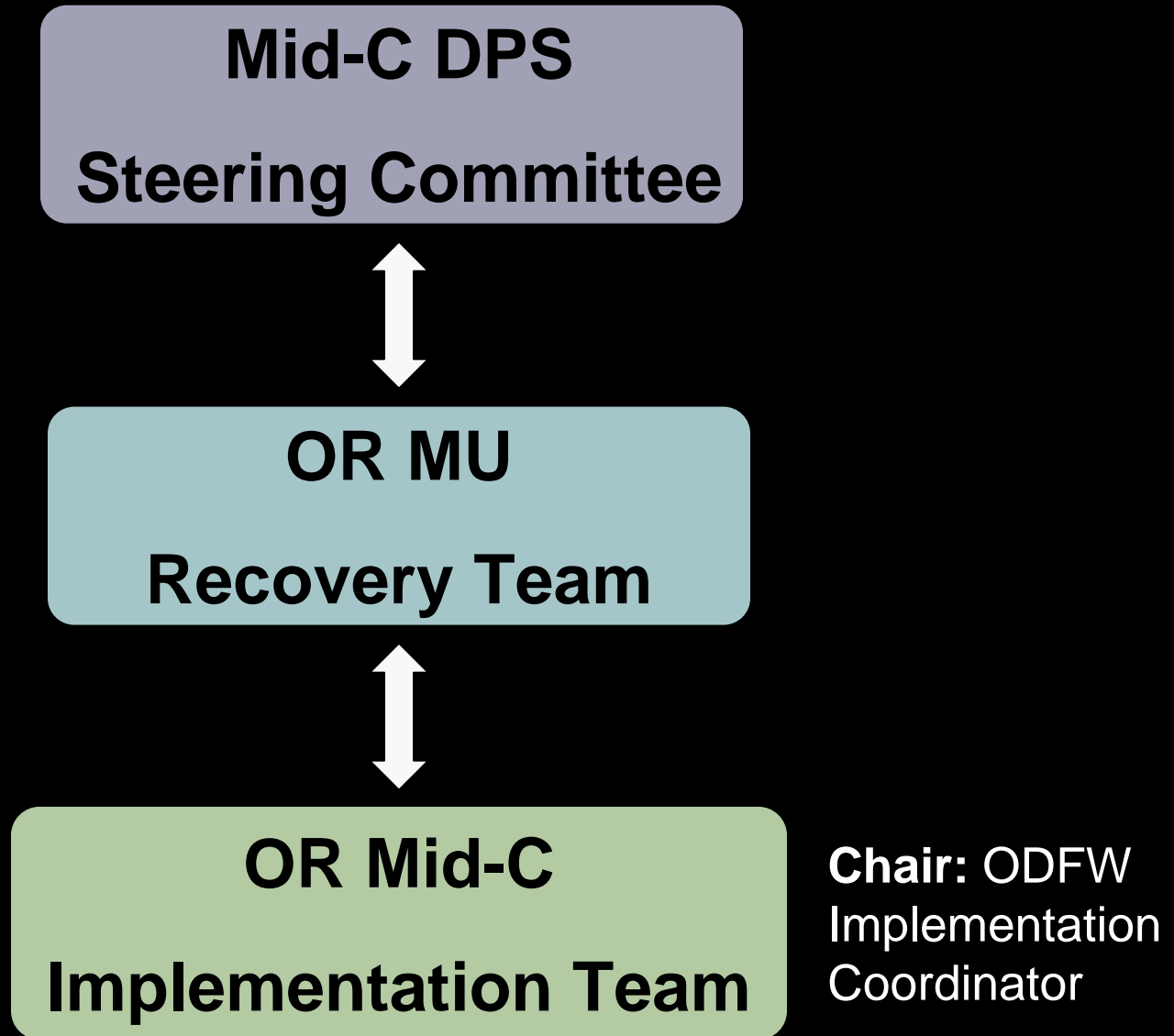
February 2010: Fish & Wildlife Commission approval

September 2010: ODFW Coordinator hired

October 2010 – Present: Building capacity



OR Mid-C Implementation Framework



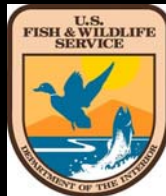
OR Mid-C Implementation Team

80 Members

43 Entities



Wasco SWCD



Monument SWCD



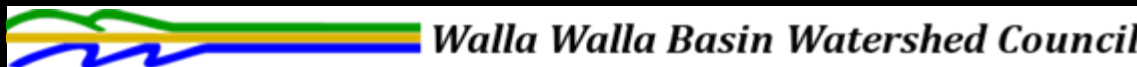
Central Oregon Flyfishers



Umatilla SWCD



North Fork John Day Watershed Council



Lower John Day Conservation



Bridge Creek WC

Gilliam-East John Day WC

Work Group



CENTRAL OREGON IRRIGATION DISTRICT

Mid John Day WC



OR Mid-C Implementation Team: Purpose

Work together,
collectively and synergistically,
to **achieve and advance**
recovery **goals.**



OR Mid-C Team: Function Dictates Form



OR Mid-C Tributary Habitat Actions

1,840 site-specific actions

Cascades/E. S. Tribs MPG

529 actions

- Fifteen Mile = 122
- Deschutes Eastside = 97
- Deschutes Westside = 138
- Crooked River = 172

John Day River MPG

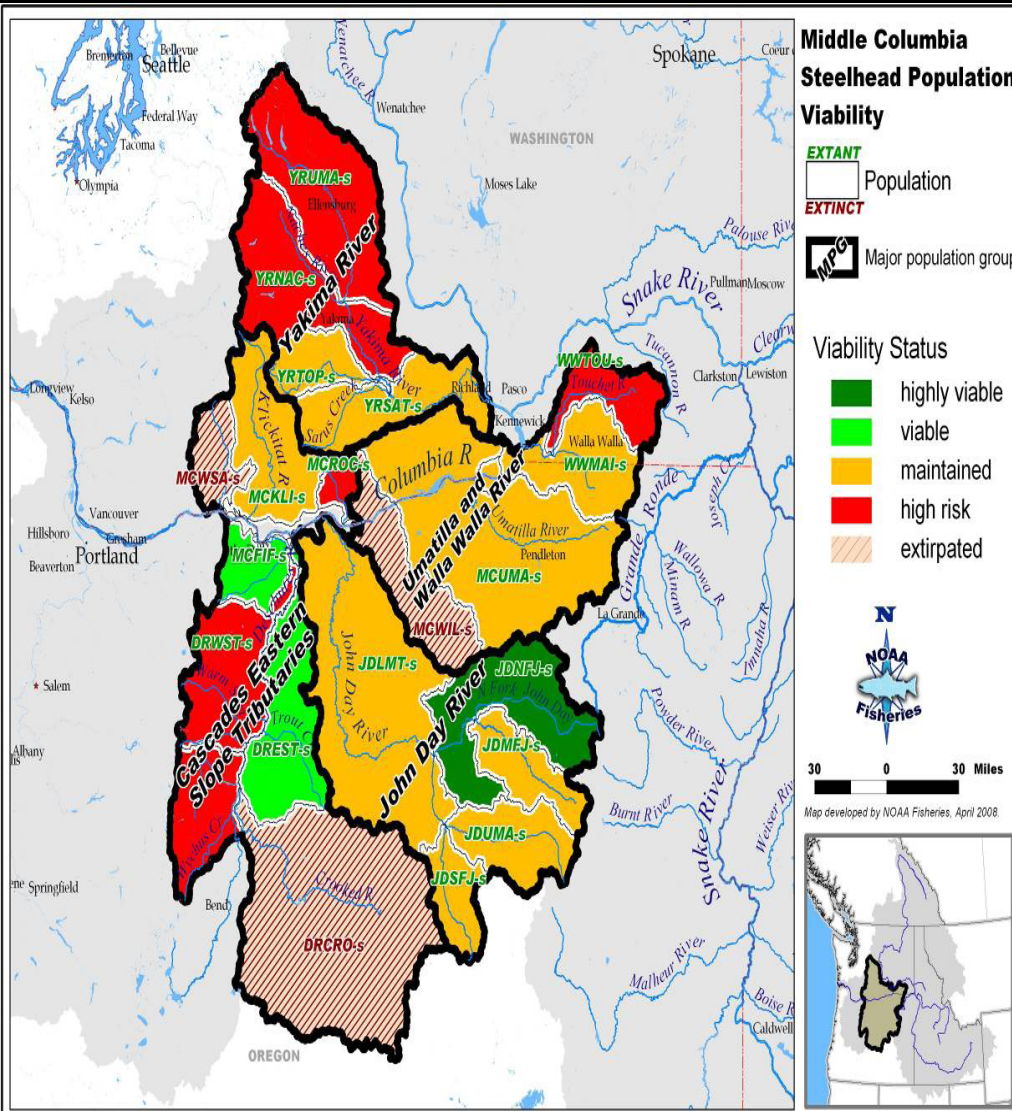
981 actions

- Lower Mainstem John Day = 299
- North Fork John Day = 154
- Middle Fork John Day = 159
- South Fork John Day = 100
- Upper Mainstem John Day = 269

Umatilla & Walla Walla MPG

330 actions

- Umatilla River = 179
- Walla Walla River = 151



Highest Priority Management Actions

- Protect **high quality habitat** & conserve **natural ecological processes** that support priority populations & primary life histories
- Protect or enhance viability of **multiple populations**
- Conserve **unique & rare** habitats, life histories, & genetic attributes
- Target **key limiting factors** & contribute significantly to **viability improvement**
- Provide **critical information** to assess success & make adaptive management decisions

OR Mid-C Recovery Action Implementation



Photo: PGE, CTWSRO

Pelton Round Butte Passage & Reintroduction



Photo: Wheeler SWCD

Bridge Creek Passage & Restoration



Photo: CTUIR

Meacham Creek Floodplain & Instream Restoration

OR Mid-C Recovery Plan Implementation: Summer 2011

3-Year Implementation Schedule

- Assess 2008 – 2011 action status
- Develop 2012 – 2014 work plan
 - ✓ *Priority actions based on limiting factors & restoration benefit*
 - ✓ *Foster unique partnerships*
 - ✓ *Facilitate strategic funding decisions*
 - ✓ *Assist tracking & reporting*

Planning &
Advisory

Local
Recovery
Actions

Funding
Guidance

Tracking &
Reporting

OR Mid-C Recovery Plan Implementation: Fall 2011

- FY 11 Annual Progress Report
 - Status of Mid-C populations
 - Recovery action implementation
 - Research, Monitoring & Evaluation (RM&E)
 - 2012 – 2014 work plan
 - Implementation challenges
- Annual Team Meeting
- Finalize Team Operating Guidelines



OR Mid-C Recovery Plan Implementation: Summary

- Initial phase of a dynamic recovery process
- Suite of navigational tools
 - Roadmap (i.e. the Plan)
 - Implementation framework
 - 3-year implementation work plans
 - RM&E & adaptive decision mechanisms
 - Annual progress reports & NOAA 5-year status reviews
- Destination: steelhead recover to abundant, productive & diverse levels



Contact Information



Adrienne W. Averett

Eastside Implementation Coordinator

(541) 962 – 1839

Adrienne.W.Averett@state.or.us

www.dfw.state.or.us/fish/CRP/mid_columbia_river_plan.asp

Mid-C Recovery Implementation: Challenges and Opportunities

- Funding
- Permitting & ESA consultation
- Local recovery action implementation
- Research, Monitoring, and Evaluation
- Outreach to stakeholders

