

Steve Martin

Director, Snake River Salmon Recovery Board

Walla Walla-Umatilla MPG
Walla Walla and Touchet
Populations within Washington

Progress Made Through Common Interests and Partnerships

(ppt adapted from Gary James original full version to OWEB)

Broad Community Program Support

Main Collaborator Entities

- Tribal Government
- State and Federal agencies
- County and municipal governments
- Watershed Councils/Boards
- Irrigation districts
- Conservation and environmental interests
- Academic institutions
- Private landowners



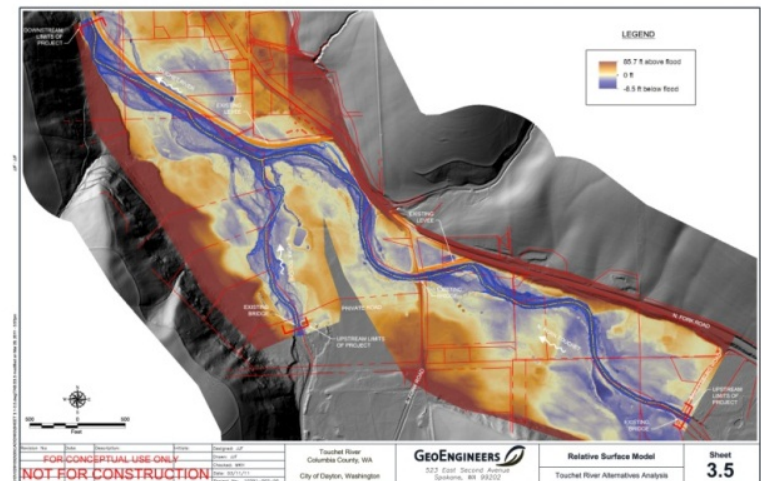
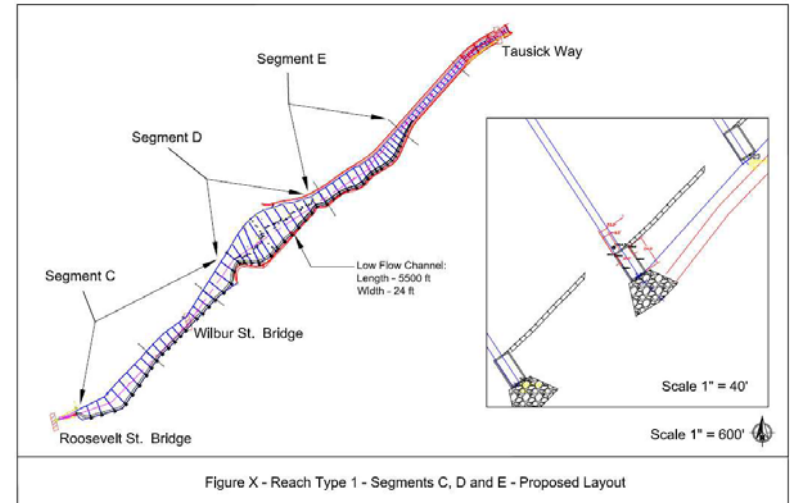
Accomplishments

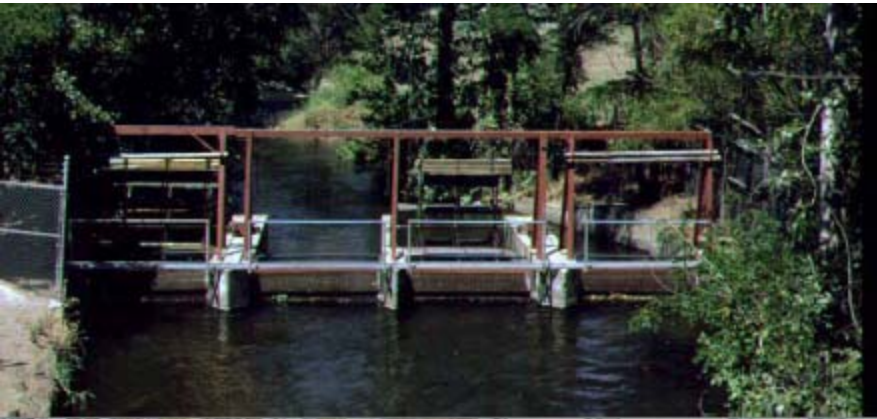
- 30 miles of open ditch piped
- 30 water system upgrades
- 500 fish screens and 380 meters
- 10 fish passage barriers removed
- 3,500 acres / 250 stream miles of CREP
- 500 acres / 10 miles in permanent easement
- More than 50 CFS trusted or conserved



Recent or Emerging Initiatives

- Mill Creek Passage
- Flow Enhancement
- Geomorphic Assessments
- USACE Levee Vegetation Policy
- Broadening the Salmon Recovery Conversation beyond the Usual Suspects





Flow meters for pump diversions





The “Walla Walla Way”

FOR FISH.

FOR FARMS.

FOR EVERYONE.

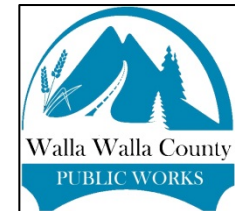
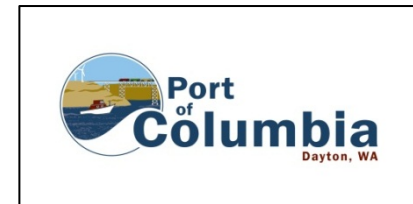
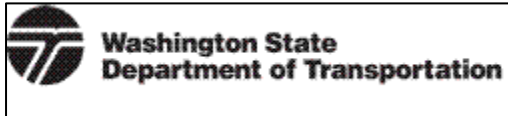
**Ask not what your watershed can do for you,
ask what you can do for your watershed!**

(paraphrased from JFK by GAJ)

through

Common Interests & Power in Partnerships

Emerging Salmon Recovery Associations “Bringing More to the Table”



Broadening the Conservation Beyond Usual Suspects:

