

Science, Service, Stewardship



Tracking the Implementation of ESA Recovery Plans for West Coast Salmon and Steelhead

Joint SWR-NWR Pilot Tracking System



**NOAA
FISHERIES
SERVICE**

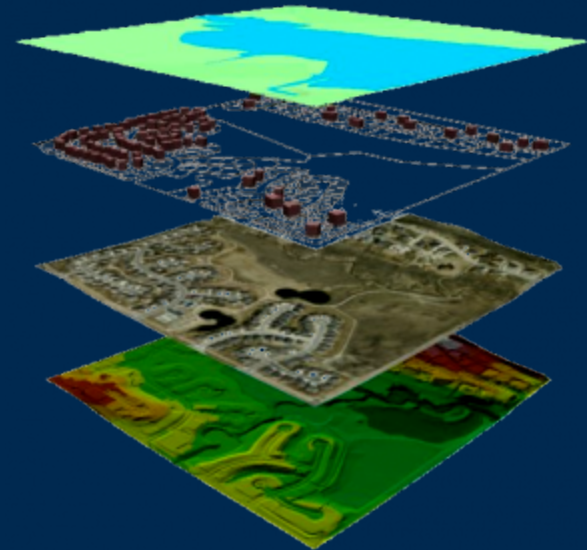
NOAA



Pilot Salmonid Recovery Action Tracking System

What is the goal?

- ❑ Spatially-explicit tracking system for all West Coast salmon and steelhead recovery plan actions
- ❑ Public system with interactive tools for custom displays, queries, exports, and reports for recovery *actions*
- ❑ Export information to satisfy new GPRA reporting requirement for recovery implementation
- ❑ Data entry and editing tools
- ❑ Display information on *projects* implementing recovery actions from existing data systems



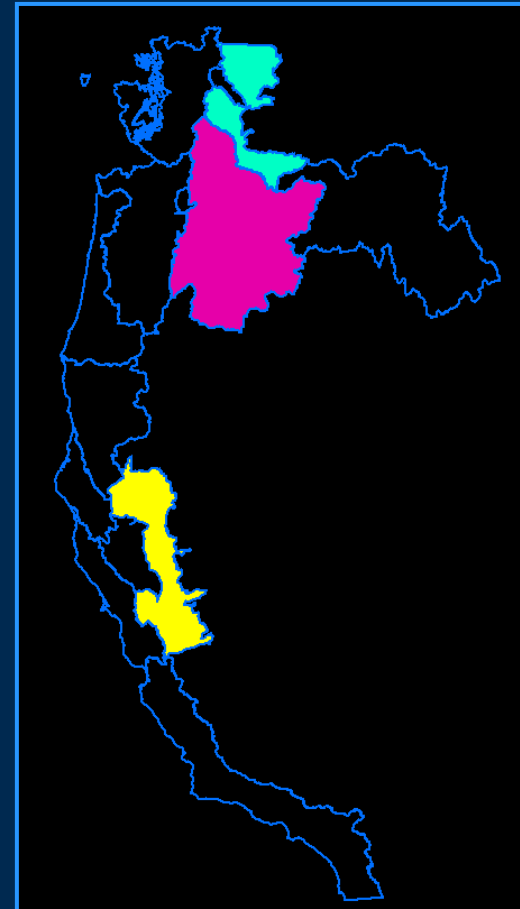


Pilot Salmonid Recovery Action Tracking System

Tasks

Scope of Pilot

1. Develop standard template for recovery actions
2. Populate template with Central Valley, Middle Columbia, Upper Columbia recovery actions
3. Build public web interface and geospatial tools
4. Build “web services” to display **project** information associated with each recovery **action**
5. Provide **project** data entry and editing tool for those entities that lack the infrastructure





Pilot Salmonid Recovery Action Tracking System

Today's Demo

- ❑ Show progress to-date on web-system spatial display and filtering of recovery actions in the Middle Columbia
- ❑ Seek initial feedback on functionality and capabilities
 - What are the most useful filters/queries?
 - Population
 - Action Type
 - Etc.
 - What standard “canned” reports and export formats should we have?
 - Identify topics/issues for future meeting(s)/workshop(s)



Pilot Salmonid Recovery Action Tracking System



For future discussion

- Content development for “front-end” websites
- What will the strategy and Business Rules be for data entry, editing, and updating of action information?
- How will the system link with regional *project* tracking systems and on what timeframe?