

# OREGON AND WASHINGTON DEPARTMENTS OF FISH AND WILDLIFE

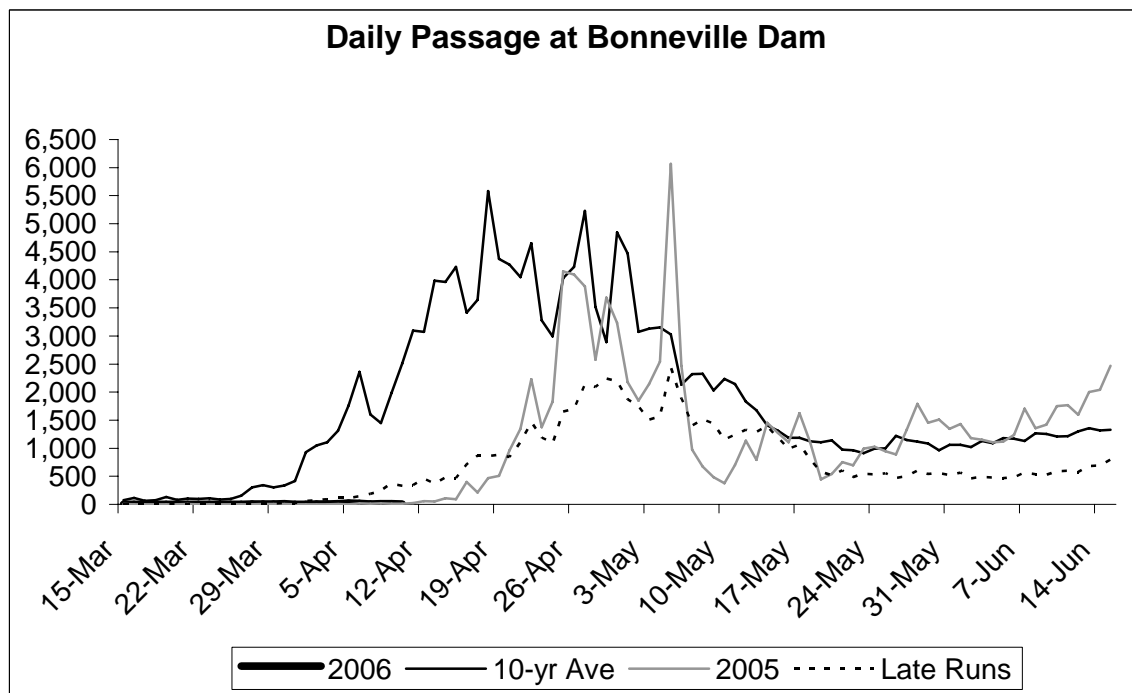
## JOINT STAFF REPORT WINTER FACT SHEET NO. 12 April 11, 2006

**Fisheries under consideration:** Non-Indian sport fisheries below Bonneville Dam

*Management guidelines and run forecasts for the 2006 spring season were presented in the Winter Fact Sheet #2 (January 26, 2006)*

### STOCK STATUS

- The upriver spring Chinook count through April 10 at Bonneville Dam totaled 121 spring Chinook. Passage for this date is comparable to 2005 (120 fish) but far below the recent 10-year average of 19,400 adult spring Chinook. For late runs, average passage through April 10 is about 1,100 fish.
- Based on the recent 10-year average, 8% of the run has passed by April 10. Late-timed runs typically have 2%-3% passage complete by April 10.
- Spring Chinook counts over Willamette Falls total 35 fish as of April 7 compared to 404 Chinook through the same date in 2005.
- Run sizes cannot be updated until late April for upriver stock and early May for Willamette stock.
- The graph below provides a comparison of current year, 2005, historical late runs, and 10-year average spring Chinook passage at Bonneville Dam.



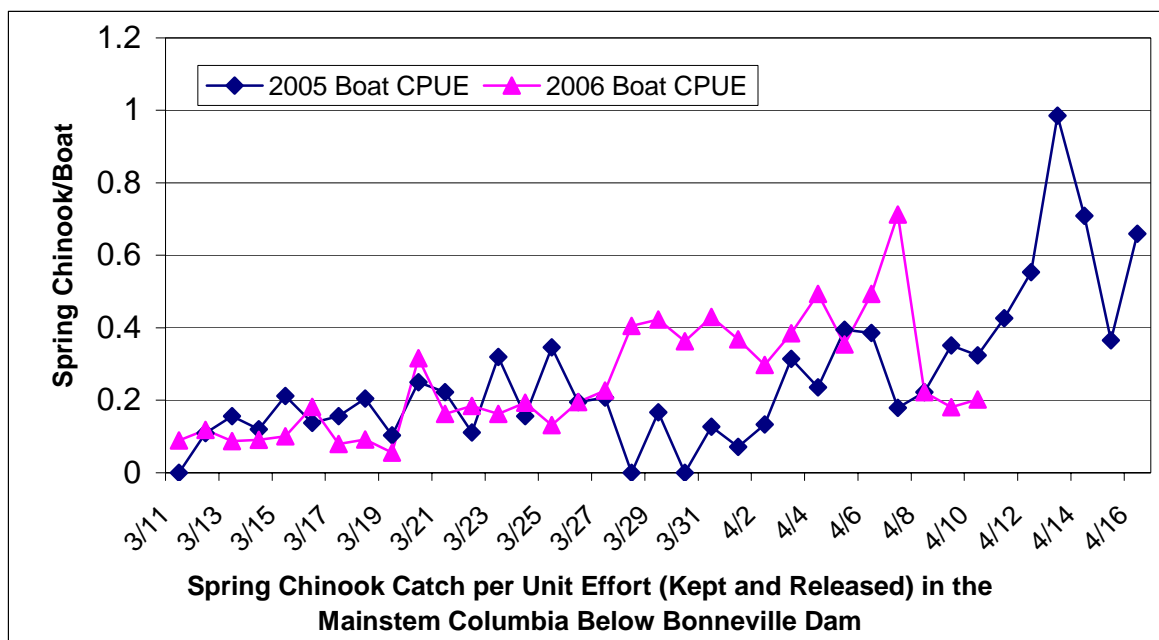
- The table below summarizes past and current handle rates of upriver spring Chinook in the recreational fishery through early/mid-April:

Average Recreational (<I-5) Handle Rate of Upriver Spring Chinook				
Below I-5		Handle	Run size	Rate
2002	14-Apr	7,708	295,100	0.03
2003	12-Apr	8,547	208,900	0.04
2004	11-Apr	6,190	193,400	0.03
2005	10-Apr	2,483	106,900	0.02
<b>Ave</b>				<b>0.03</b>
2006	<b>13-Apr</b>	<b>4,048</b>	<b>134,900</b> (2006 handle/2002-2005 rate)	

### FISHERY UPDATES

#### 2006 Lower Columbia River Recreational Fishery

- The mainstem Columbia River is currently scheduled to be open for spring Chinook between Buoy 10 and the I-5 Bridge through April 19 and through April 30 in specified areas above Bonneville Dam (Bonneville to McNary Dam excluding salmon angling from a boat and from the Washington shore between Bonneville Dam and Tower Island power lines).
- Catch rates in March and early April have been comparable to recent years. Catch rates have declined recently (possibly due to higher flows) as presented in the graph below.



- Through Sunday April 9, the recreational catch is estimated to include 4,496 kept (and 922 released) spring Chinook from 52,846 angler trips. During April 1-9, upriver stock comprised 62% of the total catch compared to 57% during March.
- The projected catch through Thursday April 13 would total 5,600 kept (and 1,118 released) spring Chinook. Projections through Sunday April 16 would total 6,900 kept (and 1,359 released) spring Chinook. The upriver percentage is projected to remain stable at 62% of the total catch.

- Total non-Indian fishery impacts are summarized below:

2006 Non-Indian Fishery Impact Scenario					
	Runsize				
	54,000	55,000	75,000	82,000	88,400 <sup>1</sup>
<b>Commercial</b>	<b>54,000</b>	<b>55,000</b>	<b>75,000</b>	<b>82,000</b>	<b>88,400<sup>1</sup></b>
Commercial Allocation	0.430%	0.645%	0.645%	0.645%	0.645%
Mainstem Commercial	0.246%	0.241%	0.177%	0.162%	0.150%
SAFE Impacts (thru April 10)	0.013%	0.013%	0.009%	0.009%	0.008%
<b>Total Commercial Impacts</b>	<b>0.259%</b>	<b>0.254%</b>	<b>0.186%</b>	<b>0.170%</b>	<b>0.158%</b>
<b>Total Percent (of Commercial Allocation)</b>	<b>60%</b>	<b>39%</b>	<b>29%</b>	<b>26%</b>	<b>24%</b>
<b>Recreational</b>	<b>54,000</b>	<b>55,000</b>	<b>75,000</b>	<b>82,000</b>	<b>88,400<sup>1</sup></b>
Recreational Allocation-Below Bonneville	0.428%	0.641%	0.641%	0.641%	0.641%
Below Bonn. Impacts (thru April 9)	0.630%	0.619%	0.454%	0.415%	0.385%
Below Bonn. Impacts (Proj. April 10-13)	0.164%	0.161%	0.118%	0.108%	0.100%
Total Sport Impacts (thru April 13)	0.794%	0.780%	0.572%	0.523%	0.485%
<b>Percent to Date (of Below Bonn Allocation)</b>	<b>186%</b>	<b>122%</b>	<b>89%</b>	<b>82%</b>	<b>82%</b>
<i>Below Bonn Impacts-- April 14-16 (Projected)</i>	0.193%	0.190%	0.139%	0.127%	0.118%
Total Sport Impacts (thru April 16)	0.987%	0.969%	0.711%	0.650%	0.603%
<b>Percent to Date (of Below Bonn Allocation)</b>	<b>231%</b>	<b>151%</b>	<b>111%</b>	<b>101%</b>	<b>94%</b>
<b>Combined</b>	<b>54,000</b>	<b>55,000</b>	<b>75,000</b>	<b>82,000</b>	<b>88,400<sup>1</sup></b>
Total Non-treaty Allocation	1.00%	1.50%	1.50%	1.50%	1.50%
Combined Impacts thru April 13	1.053%	1.033%	0.758%	0.693%	0.643%
<b>Percent of Total Allowable</b>	<b>105%</b>	<b>69%</b>	<b>51%</b>	<b>46%</b>	<b>43%</b>
Combined Impacts thru April 16	1.246%	1.223%	0.897%	0.820%	0.761%
<b>Percent of Total Allowable</b>	<b>125%</b>	<b>82%</b>	<b>60%</b>	<b>55%</b>	<b>51%</b>

<sup>1</sup> Using 25% buffer with preseason runsize

### 2006 Select Area Commercial Fisheries

- SAFE fisheries have landed an estimated 542 Chinook and eight sturgeon through April 10. Landings include 400 Chinook from Youngs Bay and 142 Chinook from Blind Slough.
- Through April 10, the estimated upriver spring Chinook impacts for Select Area winter fisheries is 0.008%, or 8% of the 0.100% allocated to Select Areas.

## FISHERY RECOMMENDATIONS

### 2006 Lower Columbia River Recreational Fishery

The Joint Staff recommends the following modifications to the ongoing recreational sport fishery below Bonneville Dam:

- Effective 12:01 AM Friday April 14, 2006 is closed to angling for spring Chinook, steelhead, and shad in the mainstem Columbia River from the mouth at Buoy 10 upstream to the I-5 Bridge.

- This fishery poses an increased risk of exceeding the below Bonneville recreational allocation if allowed to continue past Thursday April 13 with a risk of exceeding the total non-Indian allocation at upriver runsizes below 55,000

### **FUTURE MEETINGS**

- The Joint Staff is not recommending additional Joint State/Compact hearings at this time.
- The Joint Staff will continue to monitor spring Chinook runs and will provide weekly updates with additional Joint State hearings scheduled as necessary.