

## **2023 mainstem Columbia River summer/fall salmon and steelhead regulations\***

### **Summer Season (June 16 – July 31)**

#### **Astoria-Megler Bridge upstream to Bonneville Dam**

- Retention of hatchery Chinook (adults and jacks<sup>a</sup>), sockeye, and hatchery steelhead allowed.
- The daily adult bag limit is two salmonids, but only one may be a hatchery steelhead.
- All sockeye are considered adults in the daily limit and must be recorded as adults on the combined angling tag.

#### **Bonneville Dam upstream to Hwy 395 Bridge (Pasco, WA)**

- Retention of hatchery Chinook (adults and jacks<sup>a</sup>), sockeye, and hatchery steelhead allowed.
- The daily adult bag limit is two salmonids, but only one may be a hatchery steelhead.
- All sockeye are considered adults in the daily limit and must be recorded as adults on the combined angling tag.

### **Fall Season (August 1 – December 31)**

For all fall-season salmonid fisheries, each legal angler aboard a vessel may continue to deploy angling gear until the daily adult salmonid bag limit for all anglers aboard has been achieved. Anglers are reminded that it is unlawful to fish in an area while in possession of fish that are not legal for that area.

#### **Buoy 10 upstream to west Puget Island**

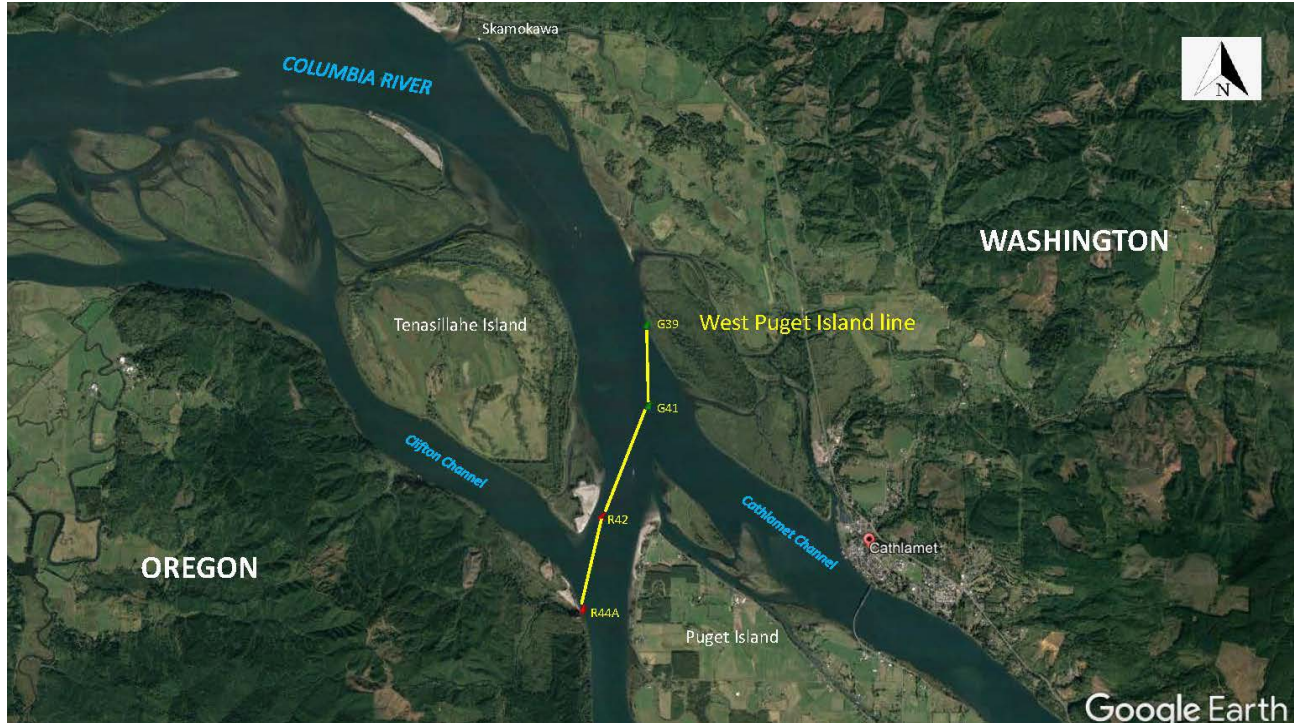
**Area definition:** From the Buoy 10 line upstream to a line at the west end of Puget Island extending from green navigation marker #39 on the Washington shore to green navigation marker #41, then to red navigation marker #42, and terminating at red navigation marker #44A on the Oregon shore.

#### **General regulations during fall season:**

- Wild coho must be released.
- All steelhead must be released August 1 – October 31.
- Permanent rules for size limits and retention of jacks are in place:
  - Between Buoy 10 and the Tongue Point/Rocky Point line, adult Chinook are longer than 24-inches and adult coho are 16-inches and longer.
  - Between Buoy 10 and the Tongue Point/Rocky Point line, jack retention is prohibited through September 30; Chinook jacks are not allowed if the retention of adult Chinook is closed.
  - Between Tongue Point/Rocky Point and west Puget Island, adult Chinook are longer than 24-inches and adult coho are longer than 20-inches.
  - Between Tongue Point/Rocky Point and west Puget Island, the retention of coho jacks (12–20-inches) and Chinook jacks (12–24-inches) is allowed<sup>a</sup> when retention of adult fish of those species is allowed.
  - The Tongue Point/Rocky Point line is defined as: a line projected from Rocky Point on the Washington shore through red navigation buoy #44 to the navigation marker at Tongue Point on the Oregon shore.

#### **Additional regulations by date period:**

- **August 1–20, August 24–27 and August 30 – September 4:** Retention of adipose fin-clipped Chinook and hatchery coho allowed. The daily adult bag limit is two salmon, but only one may be a Chinook.
- **August 21–23 and August 28–29:** Closed to salmonid angling.
- **September 5 – December 31:** Retention of hatchery coho allowed. All Chinook must be released. The daily adult bag limit is three hatchery coho.



### West Puget Island upstream to Warrior Rock/Bachelor Island

**Area definition:** From a line at the west end of Puget Island extending from green navigation marker #39 on the Washington shore to green navigation marker #41, then to red navigation marker #42, and terminating at red navigation marker #44A on the Oregon shore upstream to a line projected from the Warrior Rock Lighthouse on the Oregon shore to red navigation buoy #4, then to the piling dolphin on the lower end of Bachelor Island.

#### **General regulations during fall season:**

- Wild coho must be released.
- All steelhead must be released August 1 – October 31.
- Permanent rules for size limits and jack retention regulations are in place:
  - Adult Chinook are longer than 24-inches and adult coho are longer than 20-inches.
  - Retention of Chinook (12–24 inches) and coho (12–20 inches) jack salmon allowed<sup>a</sup> when retention of adults of those species is allowed.

#### **Additional regulations by date period:**

- **August 1 – September 4:** Retention of Chinook and hatchery coho allowed. The daily adult bag limit is two salmon, but only one may be a Chinook.
- **September 5–30:** Salmonid angling prohibited.

- **October 1–31:** Retention of hatchery coho allowed; all Chinook must be released. The daily adult bag limit is two hatchery coho.
- **November 1 – December 31:** Retention of hatchery coho and hatchery steelhead allowed; all Chinook must be released. The daily adult bag limit is two salmonids (coho or steelhead only).

### **Warrior Rock/Bachelor Island upstream to Bonneville Dam**

**Area definition:** From a line projected from the Warrior Rock Lighthouse on the Oregon shore to red navigation buoy #4, then to the piling dolphin on the lower end of Bachelor Island upstream to Bonneville Dam.

#### **General regulations during fall season:**

- Wild coho must be released.
- All steelhead must be released August 1 – October 31.
- Permanent rules for size limits and jack retention regulations are in place:
  - Adult Chinook are longer than 24-inches and adult coho are longer than 20-inches.
  - Retention of Chinook (12–24 inches) and coho (12–20 inches) jack salmon allowed<sup>a</sup> when retention of adults of those species is allowed.

#### **Additional regulations by date period:**

- **August 1 – September 14:** Retention of Chinook and hatchery coho allowed. The daily adult bag limit is two salmon, but only one may be a Chinook.
- **September 15–30:** Salmonid angling prohibited.
- **October 1–31:** Retention of hatchery coho allowed; all Chinook must be released. The daily adult bag limit is two hatchery coho.
- **November 1 – December 31:** Retention of hatchery coho and hatchery steelhead allowed; all Chinook must be released. The daily adult bag limit is two salmonids (coho or steelhead only).

### **Bonneville Dam upstream to The Dalles Dam <sup>b</sup>**

#### **General regulations during fall season:**

- Only hatchery coho (adults and jacks) may be retained downstream of the Hood River Bridge.
- All steelhead must be released August 1 – October 31.
- Permanent rules for size limits and jack retention regulations are in place:
  - Adult Chinook are longer than 24-inches and adult coho are longer than 20-inches.
  - Retention of Chinook (12–24 inches) and coho (12–20 inches) jack salmon allowed<sup>a</sup> when retention of adults of those species is allowed.

#### **Additional regulations by date period:**

- **August 1 – October 15:** Retention of Chinook and coho allowed. The daily adult bag limit is two salmon, but only one may be a Chinook.
- **October 16–31:** The retention of coho is allowed; all Chinook must be released. The daily adult bag limit is two coho.
- **November 1 – December 31:** Retention coho and hatchery steelhead allowed; all Chinook must be released. The daily adult bag limit is two salmonids (coho or steelhead only).

### **The Dalles Dam upstream to Hwy 395 Bridge (Pasco, WA) <sup>b</sup>**

**General regulations during fall season:**

- All steelhead must be released September 1 – December 31.
- Permanent rules for size limits and jack retention regulations are in place:
  - Adult Chinook are longer than 24-inches and adult coho are longer than 20-inches.
  - Retention of Chinook (12–24 inches) and coho (12–20 inches) jack salmon allowed<sup>a</sup> when retention of adults of those species is allowed.

**Additional regulations by date period:**

- **August 1–31:** Retention of Chinook, coho, and hatchery steelhead allowed. The daily adult bag limit is two salmonids, but only one may be a Chinook and only one may be a hatchery steelhead.
- **September 1 – October 15:** Retention of Chinook and coho allowed. The daily adult bag limit is two salmonids, but only one may be a Chinook.
- **October 16 – December 31:** The retention of coho is allowed. The daily adult bag limit is two coho.

---

\* Regulations are subject to in-season modification, visit [www.myodfw.com](http://www.myodfw.com) for current regulations.

<sup>a</sup> The daily bag limit for jack salmon in Oregon is five fish.

<sup>b</sup> Temporary rules for Thermal Angling Sanctuaries associated with Eagle Creek, Herman Creek, and the Deschutes River are described below.

## 2023 summer/fall salmon and steelhead regulations for Columbia River Thermal Angling Sanctuaries (Eagle Cr., Herman Cr., Deschutes River) and the lower John Day River.

*Permanent regulations and/or new temporary rules apply for other sections of these tributaries.*

### Eagle Creek (Central Zone)

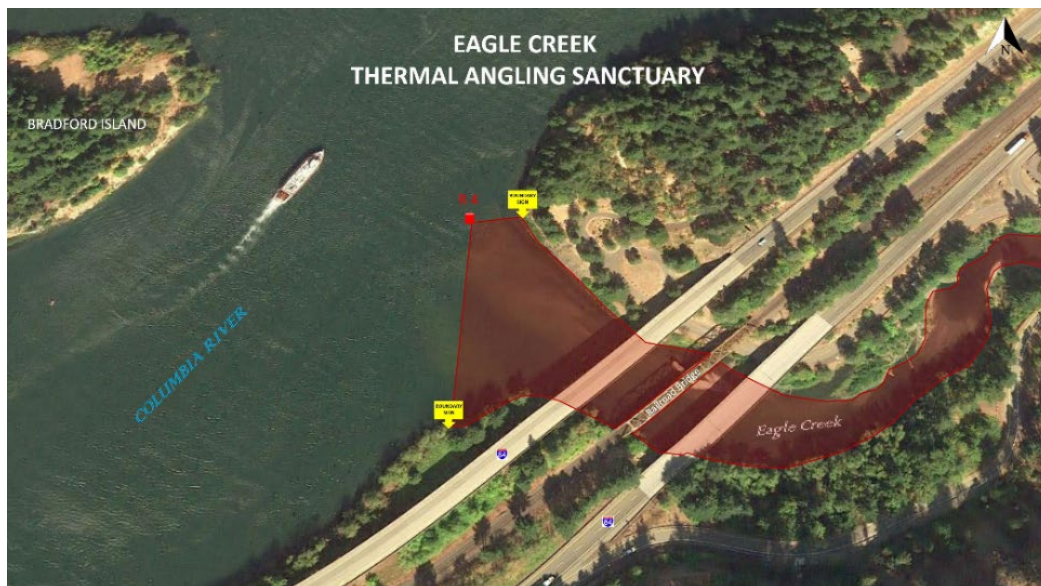
**Area definition:** From the angling deadline in Eagle Creek (200 feet downstream of hatchery fishway entrance) downstream to the mouth at the mainline railroad bridge.

- **June 16 – July 14:** Permanent rules apply except only one hatchery steelhead allowed in the daily adult salmonid bag limit.
- **July 15 – September 15:** Closed to angling.
- **September 16 – November 30:** Closed to salmon and steelhead angling/retention.
- **December 1–31:** Permanent rules apply.

### Eagle Creek Mouth (Columbia River Zone)

**Area definition:** The mainstem Columbia River adjacent to the mouth of Eagle Creek from the mainline railroad bridge northwest to a line projecting from a marker on the Oregon shore approximately 200 feet downstream of Eagle Creek, through red navigation buoy #4, and terminating at a marker on the Oregon shore approximately 325 feet upstream of Eagle Creek.

- **June 16 – July 14:** See rules for Columbia River mainstem: Bonneville Dam to The Dalles Dam.
- **July 15 – September 15:** Closed to angling.
- **September 16 – December 31:** See rules for Columbia River mainstem: Bonneville Dam to The Dalles Dam.



### Herman Creek (Columbia River Zone)

**Area definition:** From the mainline railroad bridge downstream to markers at mouth.

- **June 16 – July 14:** See rules for Columbia River mainstem: Bonneville Dam to The Dalles Dam.
- **July 15 – November 30:** Closed to angling.

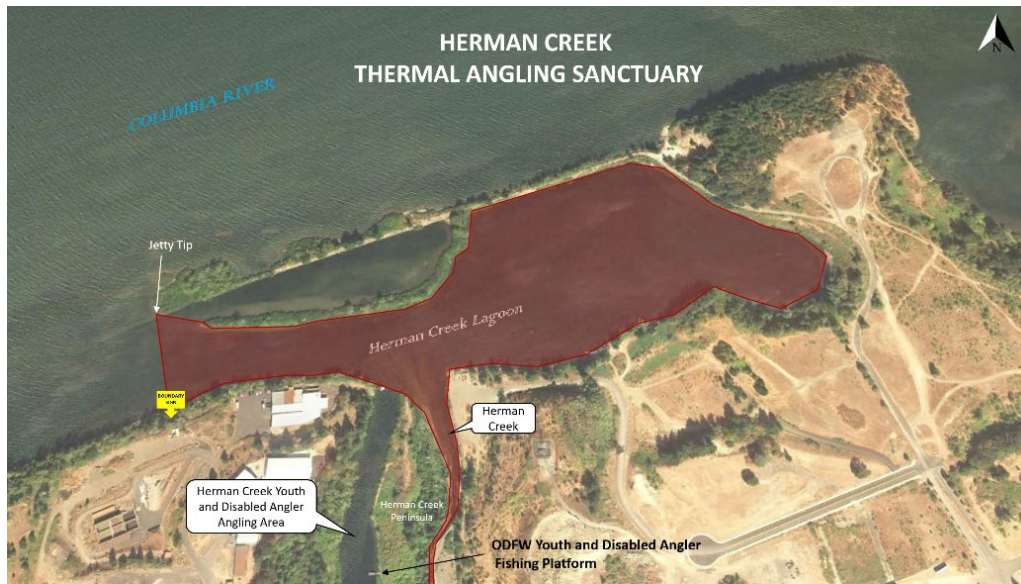


- **December 1–31:** See rules for Columbia River mainstem: Bonneville Dam to The Dalles Dam.

### Herman Creek Lagoon (Columbia River Zone)

**Area definition:** Herman Creek Lagoon/Cove east of a line from the northwest tip of the jetty, south to a marker on the Oregon shore.

- **June 16 – July 14:** See rules for Columbia River mainstem: Bonneville Dam to The Dalles Dam.
- **July 15 – September 15:** Closed to angling.
- **September 16 – December 31:** See rules for Columbia River mainstem: Bonneville Dam to The Dalles Dam.



### Deschutes River (Central Zone)

**Area definition:** From markers at lower end of Moody Rapids downstream to the mouth the Interstate 84 Bridge (west bound).

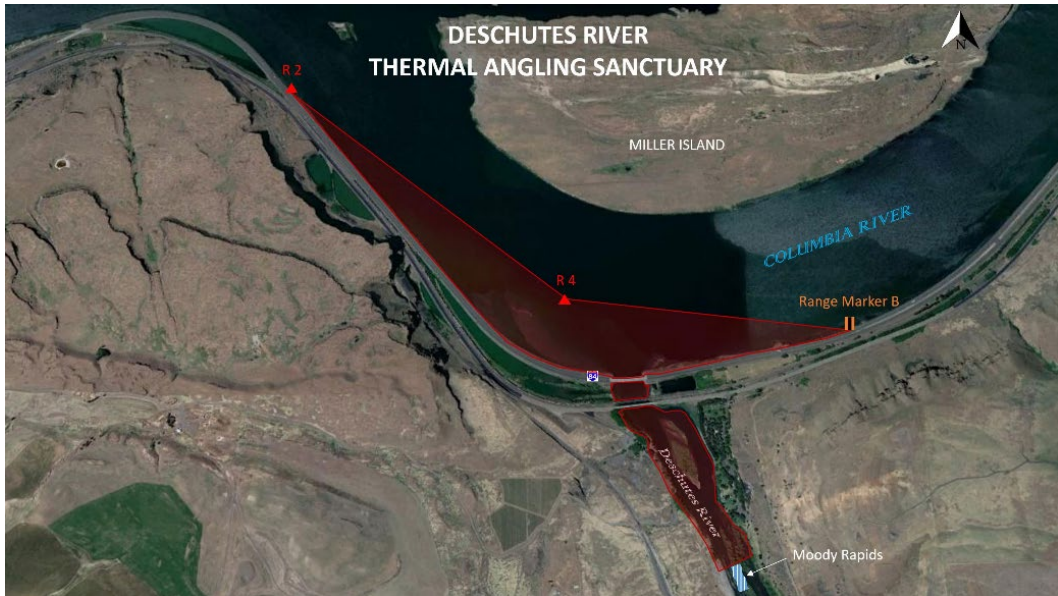
- **June 16 – July 14:** Retention of hatchery steelhead allowed. See rules for Central Zone, Deschutes River I-84 bridge to Sherars Falls.
- **July 15 – September 15:** Closed to angling.
- **September 16 – December 31:** Visit [www.myodfw.com](http://www.myodfw.com) to check regulation status.

### Deschutes River Mouth (Columbia River Zone)

**Area definition:** The mainstem Columbia River adjacent to the mouth of the Deschutes River from the Interstate 84 Bridge (west bound) north to a line projecting from the flashing red navigation marker #2 located approximately 1.5 miles downstream of the Deschutes River mouth on the Oregon shore, upstream to the red navigation marker #4, then to the lower South Channel Range “B” marker located on the Oregon shore approximately 0.7 mile upstream of the Deschutes River mouth.

- **June 16 – July 14:** See rules for Columbia River mainstem: The Dalles Dam upstream to Hwy 395 Bridge (Pasco, WA).
- **July 15 – September 15:** Closed to angling.

- **September 16 – December 31:** See rules for Columbia River mainstem: The Dalles Dam upstream to Hwy 395 Bridge (Pasco, WA).



**Lower John Day River (Northeast Zone)**

**Area definition:** From the mainline railroad bridge at the mouth, upstream to a marker ¼ mile downstream of Tumwater Falls.

- **June 16 – August 31:** One hatchery steelhead allowed in the daily adult salmonid bag limit.
- **September 1 – December 31:** Steelhead retention prohibited.



###