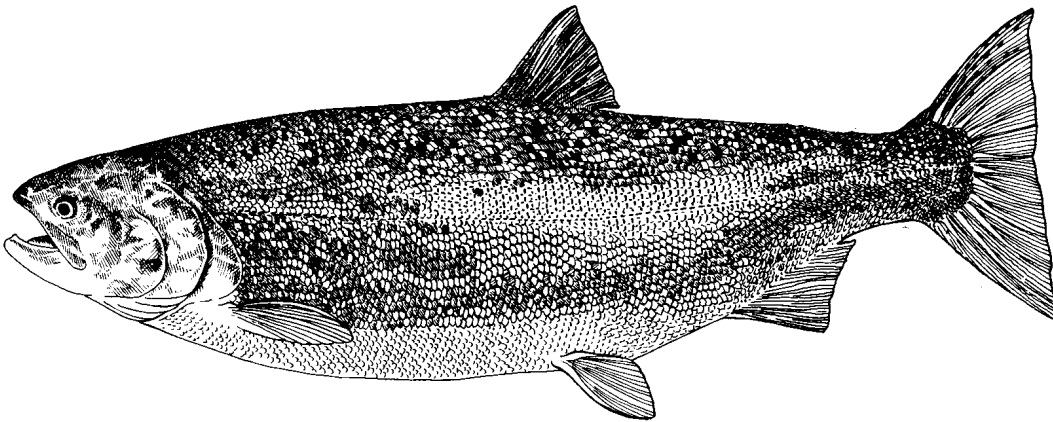


# FISH PROPAGATION ANNUAL REPORT 2003



# **Fish Propagation Annual Report for 2003**



**Fish Division**

**Oregon Department of Fish and Wildlife**

**Salem, Oregon**

**July 2004**

# Contents

Contents .....	i
Tables .....	ii
Introduction.....	1
Organization.....	1
Facilities .....	3
Fish Production .....	6
Programming.....	6
Operations .....	7
Production Summaries .....	8
Repair and Maintenance .....	10
Technical Services .....	10
Fish Health .....	10
Specialized Analyses .....	11
Fish ID .....	11
Information Support.....	12
Administration .....	13
Hatchery Related Research and Monitoring Projects .....	14
Bonneville/Ringold Hatchery Evaluation .....	14
Grande Ronde Basin Spring Chinook Captive Broodstock Program .....	14
Hatchery Research Center.....	15
Hood River Steelhead Genetic Pedigree Project .....	15
Northeast Oregon Fish Research .....	16
Select Area Fishery Evaluation (SAFE) .....	17
Stock Assessment Coded-Wire Tagging Projects.....	18
Umatilla Hatchery Evaluation.....	19
Umpqua Coho Genetic Pedigree Project .....	19
Willamette Salmonid Inventory Project.....	20
Willamette Spring Chinook Research.....	21

## Tables

Table 1. Pounds of Fish Raised at ODFW Facilities in 2003 .....	22
Table 2. Numbers and Pounds of Fish Released in Calendar Year 2003 .....	28
Table 3. Fish Produced by ODFW Hatcheries for Release Outside Oregon .....	33
Table 4. Number and Pounds of Fish Stocked by Watershed in Calendar Year 2003 .....	34
Table 5. Fish produced outside ODFW Hatcheries for release in Oregon .....	35
Table 6. Summary of Egg and Fry Rearing at ODFW Hatcheries for Brood Year 2003 .....	36
Table 7. Adult Anadromous Fish Dispositions for Calendar Year 2003 .....	42
Table 8. Wild Adult Fish Collection and Disposition for 2003 .....	49
Table 9. Egg and Carcass Sales Report 2003 .....	52
Table 10. Hatchery Maintenance Projects Completed in 2003.....	53
Table 11. Frequency of Pathogen Diagnosis at ODFW Hatcheries in 2003 .....	54
Table 12. Marking and Tagging Summary for Calendar Year 2003 .....	55
Table 13. Number of Tags Recovered by Fishery in 2003 .....	62
Table 14. Status of Hatchery Genetic Management Plans .....	63
Table 15. Fish Feed Purchased in 2003 .....	66
Table 16. Stock codes used by ODFW Fish Propagation .....	68

## **Introduction**

The mission of the Oregon Department of Fish and Wildlife (ODFW) is to protect and enhance Oregon's fish and wildlife and their habitats for use and enjoyment by present and future generations. The Department is charged by statute (ORS 506.036) to protect and propagate fish in the state. This includes direct responsibility for regulating harvest of fish, protection of fish, enhancement of fish populations through habitat improvement, and the rearing and release of fish into public waters. ODFW maintains hatcheries throughout the state to provide fish for program needs. Operation of these facilities is governed by the following:

- The Oregon Plan for Salmon and Watersheds, a comprehensive plan for the conservation of salmon and the protection of their habitat which coordinates the actions of all state agencies that affect aquatic resources.
- The Native Fish Conservation Policy, which provides a basis for managing hatcheries in balance with sustainable production of naturally produced native fish.
- The Fish Hatchery Management Policy, which provides general fish culture and facility guidelines and measures to maintain genetic resources of native fish populations spawned or reared in captivity.
- The Fish Health Management Policy, which describes measures that minimize the impact of fish diseases on the state's fish resources.

Information about the Oregon Plan can be viewed at <http://www.oregon-plan.org>. The complete texts of the Fish Hatchery Management Policy, the Native Fish Conservation Policy and The Fish Health Management Policy may be viewed by going to the ODFW Fish Division web page, <http://www.dfw.state.or.us/ODFWhtml/InfoCntrFish/InfoCntrFish.html>. In addition to these salmon and hatchery specific state policy and plan guidelines, ODFW's hatchery program works with and responds to local watershed interests; other federal, tribal, and state co-managers; federal and state Endangered Species Act (ESA) guidelines; and all other applicable federal, state and local laws and regulations.

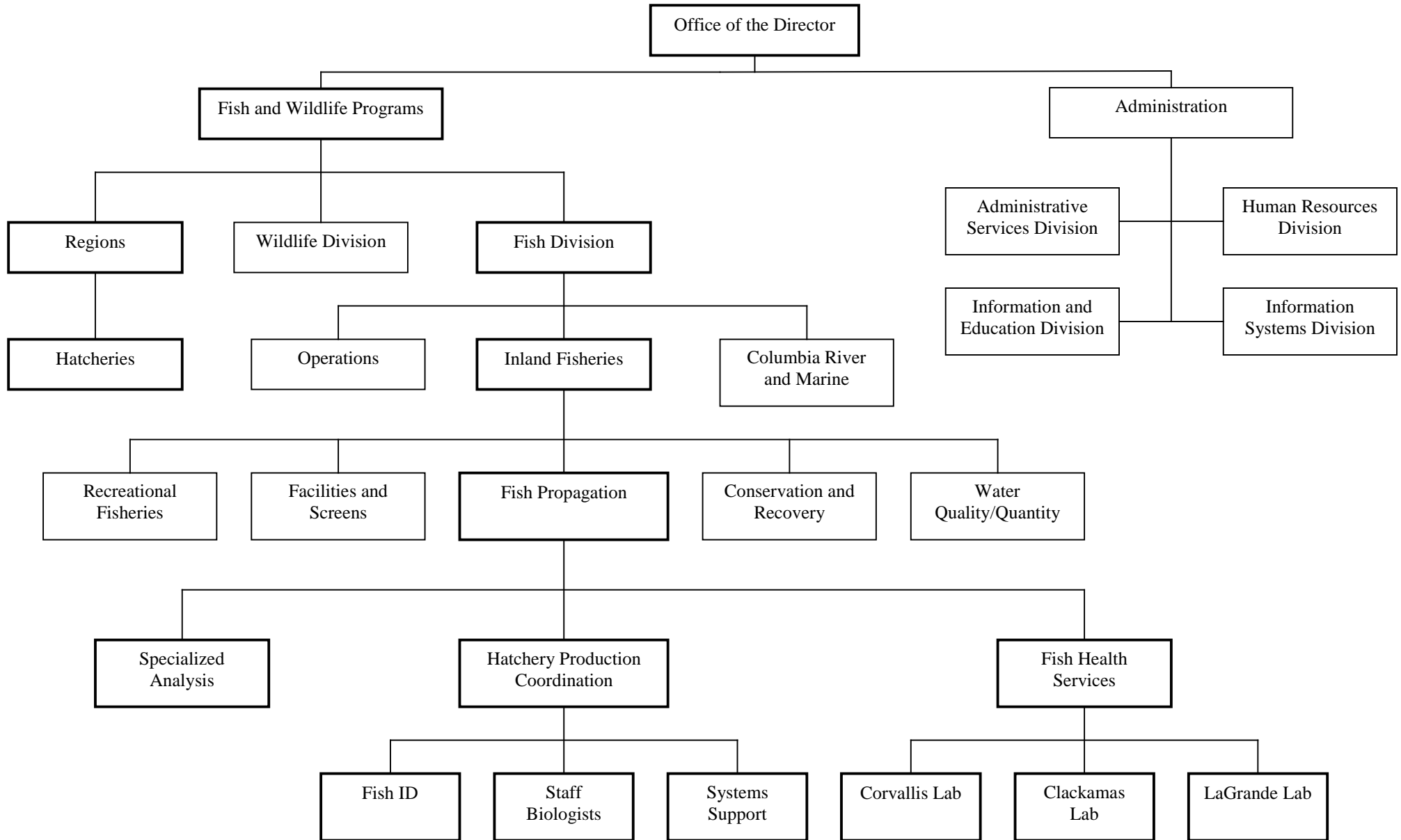
## **Organization**

The Oregon Department of Fish and Wildlife is made up of an agency headquarters and four separate regions: Northwest, Southwest, Northeast, and High Desert. The headquarters consists of the Director's office and six divisions: Fish, Wildlife, Information and Education, Information Systems, Human Resources, and Administrative Services. The headquarters provides guidance and support to the regional offices, which in turn support the field offices and hatcheries within each region.

There are three programs under the Fish Division: Operations, Columbia River & Marine, and Inland Fisheries. Inland Fisheries is divided into the Fish Propagation, Recreational Fisheries, Facilities & Screens, Conservation & Recovery, and Water Quality/Quantity subprograms.

Fish Propagation oversees hatchery production coordination, fish health services, and specialized analyses. The hatchery production coordination group consists of fish identification, information support, and staff biologists. (See Figure 1)

**Figure 1. Oregon Department of Fish and Wildlife Fish Propagation Organization**



## Facilities



ODFW operated 33 hatcheries (see Figure 2), 4 rearing ponds at locations separate from hatcheries, 8 acclimation facilities, and 9 adult trapping facilities in 2003. Many of these hatcheries have been in continuous operation from the early 1900's and have been upgraded to varying degrees as funding permits, while others began operation within the last 20 years. These facilities range in production levels from large facilities like Cole M. Rivers, which produced 576,875 pounds of fish, to small facilities like Trask, which reared 27,246 pounds. (See **Table 1 – Pounds of Fish Raised at ODFW Facilities in 2003**).

A complete listing of ODFW hatcheries may be viewed online at:

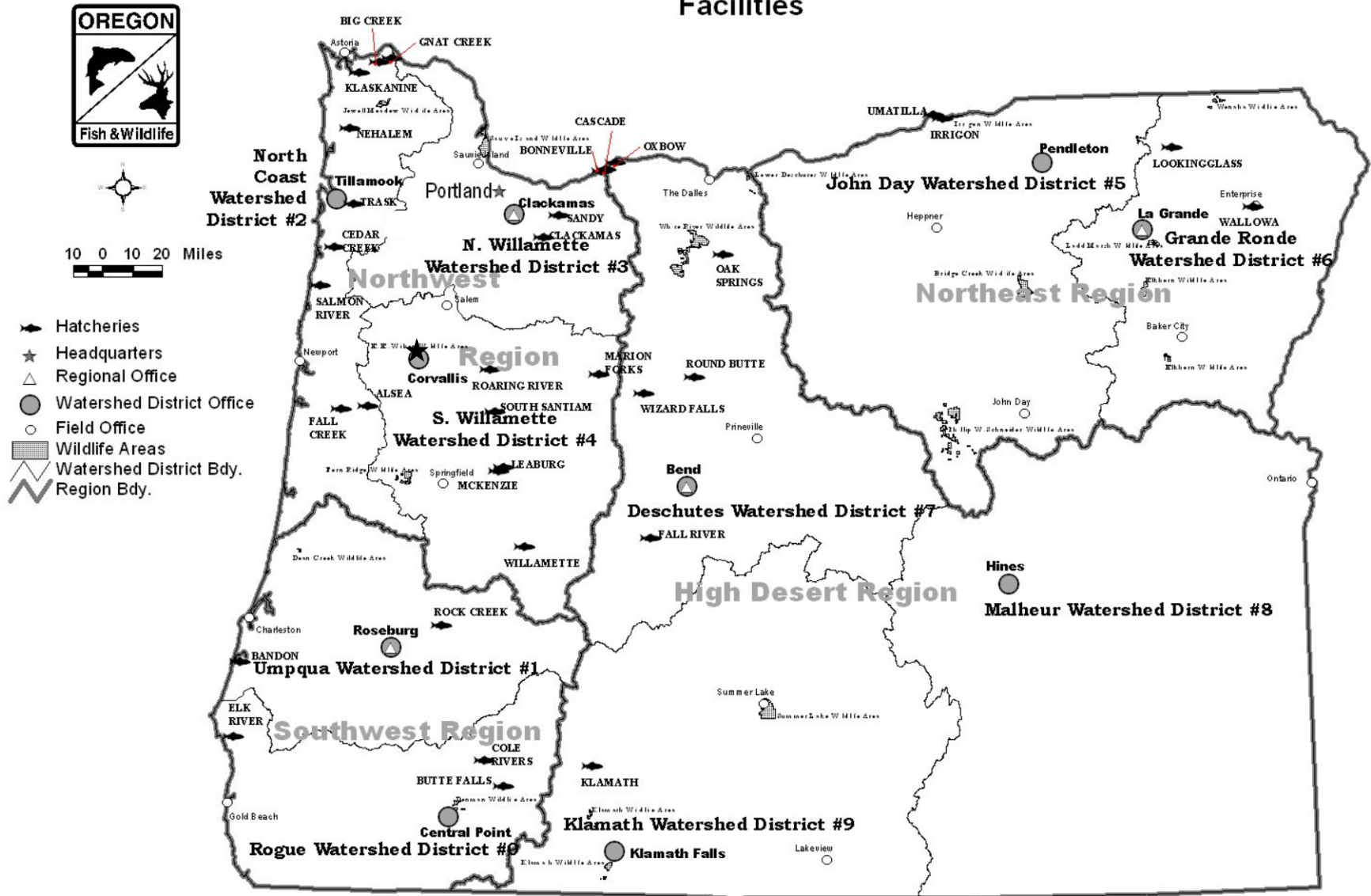
[http://www.dfw.state.or.us/ODFWhtml/InfoCntrFish/odfw\\_hatcheries.htm](http://www.dfw.state.or.us/ODFWhtml/InfoCntrFish/odfw_hatcheries.htm).

Funding for the operation of these facilities comes from a variety of sources: 12 are federally funded, 9 are state funded, and 12 are funded by a combination of State and Federal funds. Annual operating costs for these facilities amounted to approximately \$22.9 million in 2003, of which \$16.2 million was provided by Federal agencies, \$3.1 million came from State general funds, and \$3.6 million came from other sources, including license fees, power produces and water users such as the City of Portland and Portland General Electric (See Figure 3).

Figure 2.

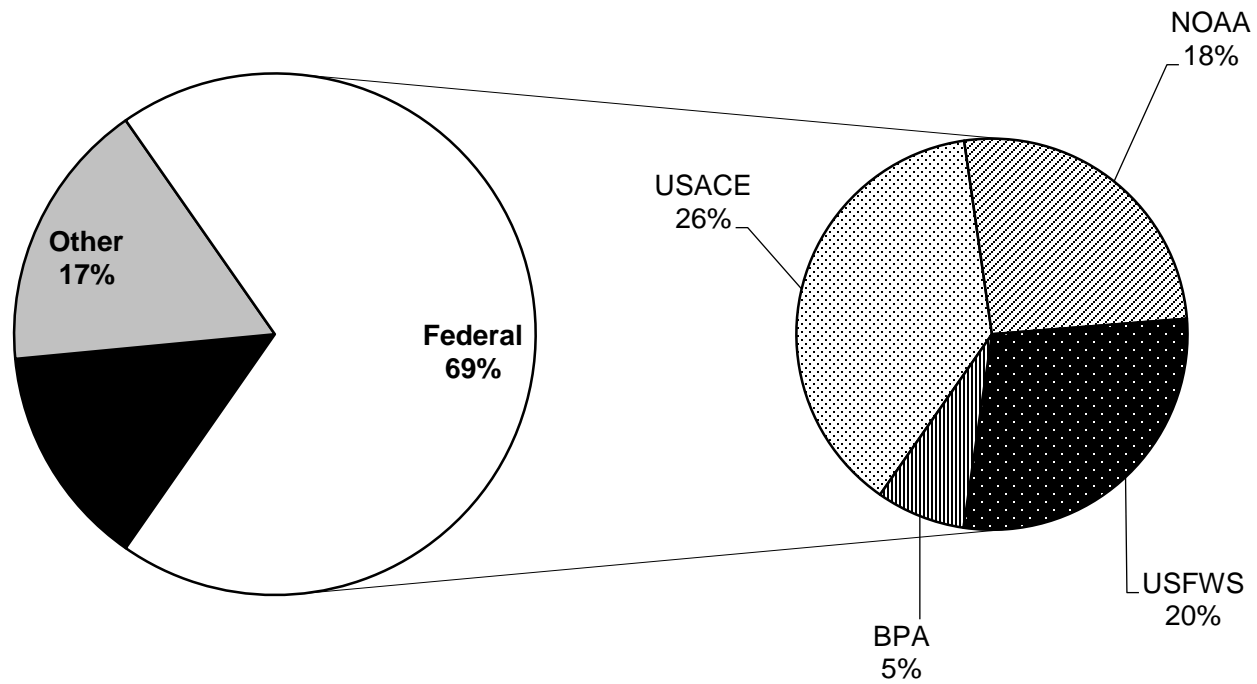
# Oregon Department of Fish & Wildlife

## Facilities



Feb. 2002  
 M. H.B.  
 Home: 503.646.1100 ext. 2111  
 http://dnr.nh.wa.gov/office/arc/arcmap5.htm

**Figure 3. Funding Sources for Hatchery Operation, Maintenance and Support**



USACE – US Army Corps of Engineers  
NOAA – National Oceanic and Atmospheric Administration

USFWS – US Fish and Wildlife Service  
BPA – Bonneville Power Administration

## Fish Production



**RAINBOW TROUT BROODSTOCK AT OAK SPRINGS HATCHERY**

The fish rearing facilities of the Oregon Department of Fish and Wildlife raise 85 different stocks of salmon, steelhead, and trout. In 2003 they produced a total of 39,812,855 fish weighing 3,443,697 pounds at time of release (Table 1).

### **Programming**

Adoption of the Native Fish Conservation Policy (NFCP) and Fish Hatchery Management Policy (FHMP) is changing the way ODFW programs hatchery production levels. Under these new policies, whether or not to produce hatchery fish, when and where they can be released, and the type and objective of hatchery programs will be established in the conservation plans, for specific areas and species, developed through implementing the NFCP. The FHMP will then provide guidance on how to implement the use of the hatchery tool under the NFCP conservation plans. The result of this process will be that each hatchery program will have a Hatchery Program Management Plan (HPMP) and/or Hatchery and Genetic Management Plan (HGMP) describing the objectives, goals, implementation, and monitoring of that specific hatchery program.

Consistent with the guidelines established in the conservation plans, and HPMPs and/or HGMPs, Salem headquarters fish propagation staff will prepare annual production schedules for each stock of fish based on program requests submitted by harvest management, district, STEP and research biologists. These schedules are then reviewed and revised at meetings with ODFW and co-manager staff, including regional, district, and hatchery managers. The final drafts are then sent to the hatcheries in time to begin planning for the upcoming production season. These

schedules include the numbers of eggs needed to meet program requirements, numbers and sizes of fish to be transferred or released, and tentative dates for transfers and releases, as well as numbers of fish to be marked and coded-wire tagged.

This information is used by the hatcheries to determine numbers of adults to be collected to provide the necessary numbers of eggs, incubation schedules for eggs and fry, allocation of pond space and water for rearing, feeding schedules to ensure that fish reach the proper size at the proper time, fish tagging and marking operations, fish hauling schedules for transfers and off-station releases, and timing of on-station releases.

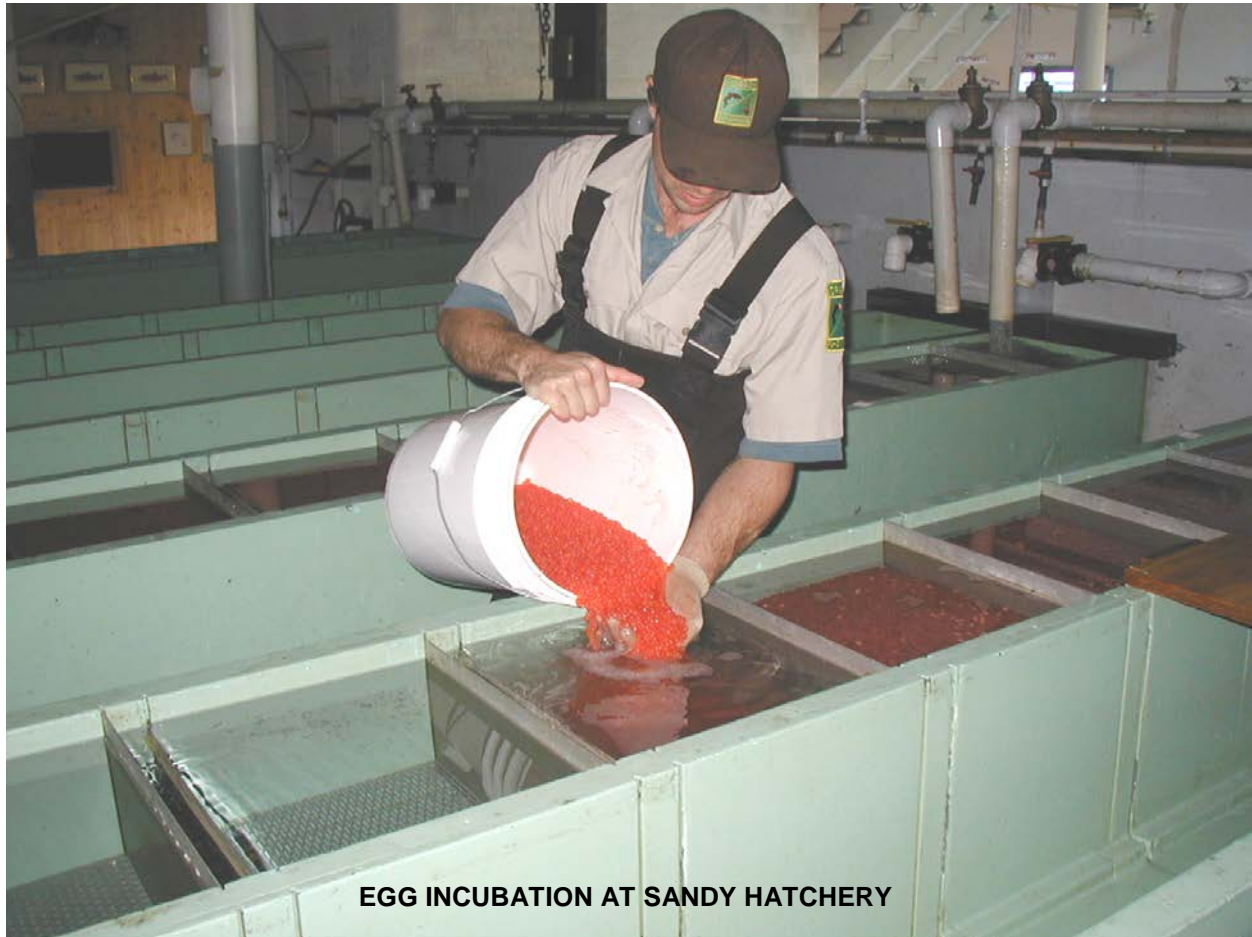
## Operations



On May 9, 2003 the Fish and Wildlife Commission adopted the Fish Hatchery Management Policy. The policy sets overall goals for the hatchery program, and calls for development of hatchery program management plans to meet those goals. It distinguishes two main types of programs: harvest hatchery programs, which operate to enhance or maintain fisheries without impairing naturally reproducing populations; and conservation hatchery programs, which operate to maintain or increase the number of naturally produced fish without reducing the productivity of naturally produced fish populations.

The policy sets guidelines for fish culture operations, hatchery facilities operations, program monitoring and evaluation, hatchery record keeping, and training of hatchery personnel.

### **Production Summaries**



Throughout the rearing process, information is submitted by the hatcheries, allowing the progress of operations to be tracked. The information is stored electronically on the ODFW headquarters mainframe (See Information Support Section below). This information is summarized in periodic reports, which provide information on daily and annual propagation and associated activities to government agencies and the public.

**Table 2 – Numbers and Pounds of Fish Released in Calendar Year 2003** shows the numbers and pounds of each species and stock of fish produced at the hatcheries in each region. A total of 39.8 million fish at a combined weight of 3.4 million pounds were reared and released into the waters of Oregon. In addition, ODFW hatcheries reared 4.1 million fish for release in Washington (see **Table 3 –Fish Produced by ODFW Hatcheries for Release Outside Oregon**).



**Table 4 – Numbers and Pounds of Fish Stocked by Watershed in Calendar Year 2003**

shows the numbers and pounds of each species stocked in each of the 18 major watersheds in Oregon. A total of 44.9 million fish weighing 3.9 million pounds were stocked. These numbers are greater than those in Table 1 because this table includes fish from sources other than ODFW hatcheries, such as fish from federally operated hatcheries, fish supplied to ODFW by private hatcheries, and warm water game fish (see **Table 5 – Fish Produced Outside ODFW Hatcheries for Release in Oregon**).

**Table 6 – Summary of Egg and Fry Rearing for Brood Year 2003** summarizes the egg and fry incubation statistics for each hatchery. Over 24,000 female fish were spawned to produce over 81 million eggs at ODFW hatcheries.

**Table 7 – Adult Anadromous Fish Dispositions for 2003** summarizes the returns of adult fish (both wild and hatchery) of each species and stock to each adult collection site and the final disposition of those fish. A total of 84,491 coho, 58,457 fall chinook, 58,949 spring chinook, 42,863 summer steelhead, and 21,786 winter steelhead returned to ODFW hatcheries and trapping facilities. (*Note – this table was updated 2/28/2019 to correct discrepancies in the original table.*)

**Table 8 – Wild Adult Fish Collection and Disposition for 2003** displays the numbers of wild or unmarked fish handled at ODFW facilities. The manner in which these wild fish are handled depends on the management goal for each stock. In segregated programs, no wild fish are utilized as broodstock, and any wild fish that enter a collection site are released, either above the

collection barrier or recycled to sites downstream. In integrated programs, a portion of the wild stock is incorporated into the hatchery program, while the majority are released. In the case of steelhead, wild broodstock may be live-spawned and released. In some programs, only wild stock are utilized as broodstock,

Adult hatchery fish returning to collection facilities are used to meet program objectives and, if available, provide other ecological, societal and program benefits. Hatchery programs are managed as best possible to meet, but not exceed, program objectives for returning adult fish. Environmental variation and other factors outside of management control may result in significantly less or more fish than planned. Adult returns exceeding program objectives are managed to provide the maximum social and ecological benefit, consistent with watershed health and native fish conservation objectives, according to guidelines in the Fish Hatchery Management Policy. Dispositions of excess fish include:

- Providing fish for tribal ceremonial and subsistence use, consistent with agreements and tribal jurisdiction.
- Recycling and relocating fish for additional harvest opportunities.
- Allowing hatchery fish to spawn naturally at locations and numbers identified in existing fish management plans or new plans developed through the process outlined in *Native Fish Conservation Policy*.
- Placing carcasses in natural spawning and rearing areas to enhance nutrient recycling, consistent with fish pathology constraints and basin plans. Between September 2002 and May 2003, over 40,000 fish carcasses were placed in 610 miles of streams in Oregon.
- Providing for experimental, scientific or educational uses identified in management plans or other ODFW Watershed District agreements.
- Selling eggs and carcasses from selected facilities to provide revenues to support hatchery programs and facilities. **Table 9 – Egg and Carcass Sales Report for 2003** shows that 30,393 pounds of non-viable eggs were sold for over \$57,000, and a total of 70,840 fish weighing 895,238 pounds were sold for \$130,630.
- Providing fish to food share programs benefiting needy Oregonians.

Carcasses that are unsuitable for any of the above uses are processed for animal feed, rendered, or buried.

### **Repair and Maintenance**

Major repair and maintenance projects at ODFW hatcheries are overseen by the Facilities and Screens Section of the Fish Division. **Table 10 - Hatchery Maintenance Projects Completed in 2003** lists the projects that were undertaken at various sites throughout the year.

### **Technical Services**

#### **Fish Health**

The Fish Health Management Policy calls for restricting the introduction, amplification, or dissemination of disease agents in hatchery produced fish and in natural environments. The Fish Health section is responsible for detecting disease agents from fish in ODFW hatcheries and from natural environments, for testing trout from private hatcheries for the parasite *Myxobolus*

*cerebralis*, and for overseeing the containment and treatment of disease agents to minimize impacts on fish populations. It conducts regular fish health examinations, investigates excessive fish losses, prescribes preventative and therapeutic treatments, and maintains records of disease diagnoses.

The section operates three diagnostic laboratories located in Corvallis, Clackamas, and LaGrande. It employs four fish health specialists, a fish health specialist/virologist, four microbiologists and a lab technician. **Table 11 - Frequency of Pathogen Diagnosis at ODFW Hatcheries in 2003** provides a summary of the parasitic, bacterial, fungal and viral agents identified in various species of fish.

### **Specialized Analyses**

The person in this position acts as the agency expert on monitoring, evaluation, and assessment of the ODFW hatchery program. This involves retrieving and analyzing information from hatchery production data, fish tagging data, fishery harvest and management data, natural production data, and research data, and drawing conclusions concerning the long-term performance of hatchery programs and their contributions to ocean and freshwater fisheries. This information is then used by ODFW and other agencies to make decisions regarding these hatchery programs.

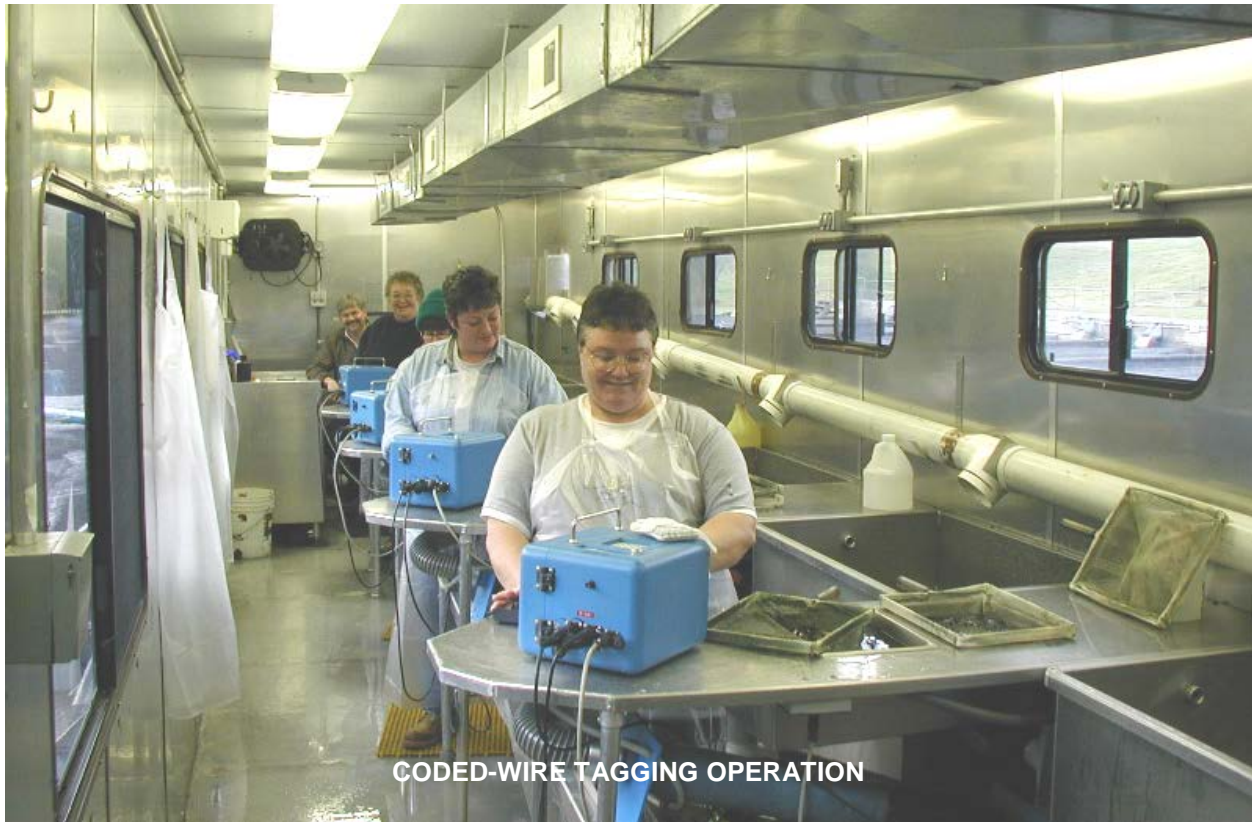
Information on releases and recoveries of tagged fish and survival rates for hatchery stocks are presented in the latest Stock Assessment Annual Report, which can be viewed online at:

<http://oregonstate.edu/Dept/ODFW/progress-reports/index.html>

This data can be retrieved from the Pacific State Marine Fisheries Commission online database at: <http://www.rmis.org/>.

### **Fish ID**

The section provides technical services by marking juvenile salmon and trout at primarily state operated hatcheries. The types of marks used include fin excision, Coded Wire Tags (CWTs), Passive Integrated Transponder (PIT) tags, Visual Implant (VI) tags and various other experimental tags. In addition, the section's central CWT Recovery Laboratory located in Clackamas extracts, decodes and verifies CWTs from adult fish sampled in Oregon's fisheries and from escapement areas such as hatchery returns and spawning grounds. Program personnel operate and maintain sixteen mobile marking units, including electronic sorters, tag injectors and quality control devices. Most coastal research and management projects depend on representative marking and tagging of anadromous fish releases and are influenced by the section's operation. The program employs ten permanent and six seasonal/limited duration positions. Approximately 26 million fish are marked and/or tagged each year. Additionally about 40,000 CWTs are processed in the Recovery Laboratory. The annual operating budget is approximately \$1,600,000. **Table 12 – Marking and Tagging Summary for Calendar Year 2003** lists the numbers of each species and stock of fish marked and/or tagged at ODFW hatcheries. **Table 13 – Number of Tags Recovered by Fishery in 2003** shows the number of tags recovered and read for each fishery during the year.



### **Information Support**

This section is responsible for developing and maintaining databases on the headquarters mainframe computer, which are used by Fish Propagation staff for recording, compiling, and analyzing data; preparing reports; and providing information to ODFW staff, other agencies, and the public.

The Hatchery Management Information System (HMIS) provides storage of information on hatchery fish culture operations, including adult fish handling, egg and fry incubation, fish rearing, fish transfers and liberations. Using desktop computers, hatchery personnel can enter this data directly into the mainframe, where it is compiled and error-checked by Information Support staff.

The Coded Wire Tag Database is used to record information from the Fish ID section on fish tagging and tag recovery. Information Services compiles this data and reports it to the Pacific States Marine Fisheries Commission. This data is also utilized by the Special Analyses section for assessment of hatchery programs.

The Information Support section also coordinates activities associated with Oregon's Salmon/Steelhead/Sturgeon/Halibut Sports Harvest cards. This includes maintaining the Sports Harvest database, compiling data, developing reports, coordinating the annual Sports Harvest Card lottery, and distributing prizes from private donors.

## Administration

The Headquarters (Salem) fish propagation staff provide coordination of the statewide fish production program, including budget preparation and management; consultation with the Facilities and Screens staff on biological and fiscal matters relating to construction and maintenance projects; guidance, through the regional hatchery coordinators, of hatchery operations; representation of propagation programs in Fish Division, executive level, and Commission meetings; and handling of routine operational matters.

The listing of several salmon and steelhead stocks under the Endangered Species Act has involved the propagation staff in the review process for the Hatchery Genetic Management Plans (HGMP). These documents are required by NOAA Fisheries and provide a review of each hatchery's current operational components for each fish species reared at a facility. Following public and ODFW review, the HGMPs are submitted to NOAA Fisheries for final review and approval. HGMP's fulfill the Fish Hatchery Management Plan requirements for a hatchery program management plan. **Table 14 – Status of Hatchery Genetic Management Plans** lists the species and stocks affected by ESA listings and the current status of the HGMPs for those stocks.

Propagation staff work with the ODFW Procurement staff and with the Department of Administrative Services to request bids and award contracts for:

- The sale of non-viable salmon eggs and adult salmon carcasses. Eggs and adult salmon that are in excess of program needs are sold to vendors, generating over \$188,000 in sales in 2003.
- The purchase of trout from private hatcheries for stocking in state waters. The passage of Senate Bill 834 in 1999 and House Bill 3334 in 2001 required that 10% of the trout stocked in Oregon must come from privately owned hatcheries. This program purchases approximately 127,000 fish, costing about \$140,000, that are stocked in 35 lakes and ponds throughout the state.
- The purchase of fish feeds. Five vendors contract to supply feeds of different types and sizes, designed to meet the needs of the different life stages of the species raised at ODFW hatcheries. In 2003, ODFW hatcheries purchased over 2,000 tons of feed at a cost of \$1.9 million. **Table 15 – Fish Feed Purchased in 2003** shows the amounts of feed purchased by each hatchery from the five vendors.

Other duties include working with hatchery staff on the reporting of water quality and chemical usage data to the Department of Environmental Quality, compiling hatchery progress reports, recording feed purchase information, overseeing the hatchery housing maintenance program, and issuing licenses to private fish propagators.

## **Hatchery Related Research and Monitoring Projects**

### **Bonneville/Ringold Hatchery Evaluation**

The Bonneville/Ringold Hatchery Evaluation ongoing since the late 1970's has focused on evaluating catch, escapement, and survival of Bonneville Hatchery (and recently Ringold Hatchery) releases to mitigate for loss in 30,000 adult fall chinook from construction of John Day Dam. The goal of the project is to evaluate rearing and release strategies that will help to improve survival of fish for John Day Mitigation.

**Contact Person:**

Name: Ron Boyce and Wayne van der Naald

Address: ODFW Northwest Regional Office  
17330 SE Evelyn Street  
Clackamas, OR 97015

Phone: (503) 657-2000 ex 415 (Ron) ex 237 (Wayne) Fax: (503) 657-2095

Email: raymond.r.boyce@state.or.us, wayne.o.vandernaald@state.or.us

### **Grande Ronde Basin Spring Chinook Captive Broodstock Program**

This program was initiated as a conservation measure in response to severely declining runs of chinook salmon in the Grande Ronde Basin. Our goals are to prevent extinction of the three populations; provide a future basis to reverse the decline in stock abundance of Grande Ronde River chinook salmon; and develop methods that will ensure a high probability of population persistence well into the future once the causes of basin wide population declines have been addressed. A comprehensive monitoring and evaluation program is underway to assess the performance of freshwater and saltwater treatments and determine the success of achieving management objectives. Associated objectives include:

- 1) Reduce the demographic risks associated with the decline of native wild chinook salmon populations in Lostine and upper Grande Ronde rivers and Catherine Creek.
- 2) Maintain genetic diversity of indigenous artificially propagated chinook salmon populations.
- 3) Maintain genetic diversity of wild populations.
- 4) Develop indigenous broodstocks for Grande Ronde chinook salmon hatchery program.
- 5) Modify facilities at Bonneville and Lookingglass fish hatcheries to provide capability to implement captive broodstock programs.
- 6) Assess captive broodstock program performance in achieving adult broodstock, smolt production, adult return goals and management objectives.
- 7) Determine optimum program operational criteria to ensure success of achieving objectives.
- 8) Assess the utility of captive broodstock programs for use in recovery of salmonids.

This captive broodstock project was initiated in the Grande Ronde basin in 1995. Spring chinook juveniles were collected from Catherine Creek and the Lostine River from 1995–2000 (1994–1999 cohorts) and from the upper Grande Ronde River in 1995, 1997, 1998 and 1999 (no fish were found in 1996 or 2000). Fish from 1995–2000 collections were reared at Lookingglass

Hatchery until the smolt stage when they were transferred to facilities at Bonneville Hatchery and Manchester Marine Laboratory. This work was initially funded by the USFWS under LSRCF. It was transferred to the BPA Fish and Wildlife Program in FY1998 as Project 9801001.

Contact Person:

Name: Rich Carmichael  
Address: NE Fish Research, ODFW  
Badgley 203, EOU  
One University Boulevard  
La Grande, OR 97850  
Phone: (541) 962-3754 Fax: (541) 962-3067  
Email: rcarmich@eou.edu

Relevant Web Page(s): Annual Reports: <http://www.cbfga.org/cfsite/BPAProjectList.cfm>  
Project Proposals: <http://www.cbfga.org/projects/>

### **Hatchery Research Center**

In conjunction with Oregon State University, ODFW is remodeling the site of a closed production hatchery into a state-of-the art hatchery research center. Construction will be completed in 2005. The mission of the Hatchery Research Center is to understand the mechanisms that may create differences between hatchery and wild salmon and steelhead, develop approaches to best manage the differences in order to meet fishery and conservation objectives, and help Oregonians understand the role and performance of hatcheries in responsibly using and protecting Oregon's native fish.

Contact Person:

Name: Charlie Corrarino  
Address: Oregon Department of Fish and Wildlife  
3406 Cherry Avenue NE  
Salem, OR 97303  
Phone: (503) 947-6213 Fax: (503) 947-6202  
Email: charles.a.corrarino@state.or.us

Relevant Web Page(s): <http://www.dfw.state.or.us/HRC/main.html>

### **Hood River Steelhead Genetic Pedigree Project**

There is a considerable interest in using hatcheries to speed the recovery of wild populations. The Bonneville Power Administration (BPA), under the authority of the Northwest Power Planning Act, is currently funding several hatchery programs in the Columbia Basin as off-site mitigation for impacts to salmon and steelhead caused by the Columbia River federal hydropower system. One such project is located on the Hood River, an Oregon tributary of the

Columbia. These hatchery programs cost the region millions of dollars. However, whether such programs actually improve the status of wild fish remains untested. The goal of this project was to evaluate the effectiveness of the Hood River hatchery program as required by the Northwest Power Planning Council Fish and Wildlife Program, by the Oregon Plan for Coastal Salmonids, by NMFS ESA Section 4(d) rulings, and by the Oregon Department of Fish and Wildlife (ODFW) Wild Fish Management Policy (OAR 635-07-525 through 529) and the ODFW Hatchery Fish Gene Resource Management Policy (OAR 635-07-540 through 541). This work was funded by the Bonneville Power Administration through BPA Intergovernmental Contract 9245 (Project # 1988-053-12), and through ODFW Interagency agreement No. 001-2007s. The project was designed to address the following specific questions:

- (1) What is the mean and year-to-year variance in relative reproductive success (adult to adult production) of conservation hatchery-origin ( $H_{\text{new}}$ ) and wild-origin (W) fish that spawned naturally in the Hood River?
- (2) Are “new” hatchery stocks closer in fitness to wild fish than “old” hatchery stocks?

Name: Dr. Michael Blouin (OSU)

Address: Dept. Zoology, Oregon State University  
Corvallis, OR 97331

Phone: (541) 737-2362

Fax: (541) 737-0501

Email: blouinm@science.oregonstate.edu

### **Northeast Oregon Fish Research**

The goals of these studies are: 1) to evaluate the success of achieving Lower Snake River Compensation Plan objectives; 2) develop and recommend hatchery practices for LSRCP hatchery production facilities in Oregon that will meet compensation requirements and management objectives for the production of spring chinook salmon and summer steelhead lost as a result of construction of the Lower Snake River dams; and 3) provide natural production and life history information to assist in recovery and monitoring of threatened salmonids in NE Oregon. We are conducting an ongoing comprehensive evaluation program for LSRCP activities in Oregon that address the following general guidelines:

1. Develop and evaluate operational procedures which will meet recovery and compensation goals as well as management objectives by priority.
2. Monitor operational practices to document hatchery production capabilities and challenges.
3. Monitor fish-rearing activities and results to document accomplishment of goals.
4. Coordinate research and management programs with hatchery capabilities.
5. Recommend hatchery production strategies that are consistent with endangered species recovery efforts.
6. Develop knowledge and information to guide recovery actions and to monitor recovery in the Grande Ronde and Imnaha river basins.

Contact Person:

Name: Rich Carmichael

Address: NE Fish Research, ODFW  
Badgley 203, EOU  
One University Boulevard  
La Grande, OR 97850

Phone: (541) 962-3754

Fax: (541) 962-3067

Email: rcarmich@eou.edu

Relevant Web Page(s): <http://pacific.fws.gov/Fisheries/LSRCP.htm>

### **Select Area Fishery Evaluation (SAFE)**

The Columbia River Terminal Fisheries Research Project was initiated by BPA in 1993 and re-titled the Select Area Fishery Evaluation (SAFE) Project in October 1997. The project is a 10-year comprehensive program to investigate the feasibility of terminal fisheries in Youngs Bay and other sites in Oregon and Washington. Terminal fisheries are being explored as a means to increase the sport and commercial harvest of hatchery fish while providing greater protection of weak wild salmon stocks. The project will be conducted in three distinct stages: an initial 2-year research stage to investigate potential sites, salmon stocks, and methodologies; a second 3-year stage of expansion in Youngs Bay and introduction into areas of greatest potential as shown from initial stage; and a final 5-year phase of establishment of terminal fisheries at full capacity at all acceptable sites. The goal of the project is to determine the feasibility of creating and expanding terminal, known stock fisheries in the Columbia River Basin to allow harvest of strong anadromous salmonid stocks while providing greater protection to depressed fish stocks. This goal is to be accomplished by addressing nine defined project objectives:

1. Survey and categorize potential terminal fishing sites in the Columbia River basin for basic physical characteristics (high, medium, and low).
2. Determine the capability of the medium and high terminal fishing sites for rearing and acclimating anadromous fish species in net pens or other facilities.
3. Determine the capability of the medium and high terminal fishing sites to allow manageable and economically competitive harvest of returning fish.
4. For the medium and high terminal fishing sites, determine the potential for harvest of target and non-target fish species.
5. Evaluate the suitability of various anadromous fish stocks for use in the medium and high terminal fishing sites.
6. Determine the generic costs and logistics of a large-scale net-pen rearing program (over-winter rearing and short-term acclimation) and estimate the variables for each of the medium and high terminal fishing sites.
7. Evaluate the effects of a large-scale net-pen rearing program (over-winter rearing and short-term acclimation) for terminal fishing on hatchery production programs.
8. Determine the effects on upriver fish runs, escapements, and Zone 6 fisheries of shifting various levels of historical Zone 1 - 5 commercial fisheries to terminal sites.

9. Coordinate activities with ODFW, WDFW, CEDC, BPA, National Marine Fisheries Service (NMFS), and Salmon For All (SFA).

Contact Person:

Name: John North

Address: ODFW Northwest Regional Office  
17330 SE Evelyn Street  
Clackamas, OR 97015

Phone: (503) 657-2000 ex 410

Fax: (503) 657-6823

Email: john.a.north@state.or.us

Relevant Web Page(s): Annual Reports: <http://www.cbfwa.org/cfsite/BPAProjectList.cfm>  
Project Proposals: <http://www.cbfwa.org/projects/>

**Stock Assessment Coded-Wire Tagging Projects**

This includes 2 federally funded contracts that pay for coded-wire tagging production releases of salmon and steelhead from ODFW hatcheries. One contract is funded by BPA and the other is funded by NOAA Fisheries. Both project insure all ODFW hatchery coho and chinook production releases have a representative CWT group included in the release. Goals for both projects are to:

- (1) Monitor adult production from hatchery releases;
- (2) Evaluate rearing and release strategies that will help to improve the survival rate of hatchery-produced smolts; and
- (3) Establish a comprehensive long-term database that will provide information needed to address issues of biology, allocation, and conservation.

Contact Person:

Name: Mark Lewis

Address: Oregon Department of Fish and Wildlife  
28655 Hwy 34  
Corvallis, OR 97333

Phone: (541) 757-4263 ex241

Fax: (541) 757-4102

Email: mark.lewis@oregonstate.edu

Relevant Web Page(s):

Project Description: <http://oregonstate.edu/Dept/ODFW/other/tag/index.html>

Annual Reports: <http://oregonstate.edu/Dept/ODFW/progress-reports/index.html>

BPA Project Proposals: <http://www.cbfwa.org/projects/>

CWT Data: <http://www.rmis.org/>

## **Umatilla Hatchery Evaluation**

Construction of Umatilla Hatchery was completed in 1991. The hatchery is the foundation for rehabilitating chinook salmon and enhancing steelhead in the Umatilla River, and is expected to contribute significantly to the Northwest Power Planning Council's goal of doubling salmon production in the Columbia Basin. Hatchery production goals and a comprehensive monitoring and evaluation plan were presented in the Umatilla Hatchery Master Plan. The comprehensive plan for monitoring and evaluation of Umatilla Hatchery was approved by the Northwest Power Planning Council as a critical adaptive management guide for fisheries rehabilitation in the Umatilla River. Monitoring and evaluation will be used to increase knowledge about uncertainties inherent in the fisheries rehabilitation and will complement the developing systematic monitoring and evaluation program. Monitoring and evaluation goals for this BPA funded project include:

- (1) Provide information and recommendations for the culture and release of hatchery fish, harvest regulations, and natural escapement to accomplish long-term natural and hatchery production goals in the Umatilla River Basin that are consistent with provisions of the Council's Columbia River Basin Fish and Wildlife Program.
- (2) Assess the success of achieving the management objectives in the Umatilla River basin that are presented in the Master Plan and the Comprehensive Rehabilitation Plan.

### Contact Person:

Name: Will Cameron and Wes Stonecypher

Address: Hermiston Research Office, ODFW  
80866 Hwy. 395 North  
Hermiston, OR 97838

Phone: (541) 567-1523

Fax: (541) 567-0293

Email: [wcameron@oregonvos.net](mailto:wcameron@oregonvos.net), [odfwhrd@orednet.org](mailto:odfwhrd@orednet.org)

Relevant Web Page(s): Annual Reports: <http://www.cbfwa.org/cfsite/BPAProjectList.cfm>  
Project Proposals: <http://www.cbfwa.org/projects/>

## **Umpqua Coho Genetic Pedigree Project**

There is a considerable interest in using hatcheries to speed the recovery of wild populations. However the value of such programs is untested. Substantial literature exists that indicates hatchery programs may pose high risks to wild populations, rather than aid them. If the risks are real, hatcheries may *interfere* with recovery, rather than speed it. Until recently, analytical methods to explore the critical questions and risks associated with hatchery programs were unavailable because we were not able to track lineages in streams once hatchery and wild fish were allowed to spawn together. New molecular genetics methods now allow us to use DNA fingerprints to pedigree entire populations under some circumstances and develop lineages that continue for multiple generations under natural spawning conditions. The objective of this study is to conduct an experimental supplementation project for coho salmon in the Calapooya, tributary of the Umpqua River, using the following hatchery scenarios:

- a. Rock Creek hatchery stock released as smolts (a "conventional hatchery program");

- b. Rock Creek hatchery stock released as unfed fry (a low- intervention hatchery program);
- c. First-generation wild-type hatchery stock released as smolts; and
- d. First-generation wild-type hatchery stock released as unfed fry.

This project was initiated in 2001 in cooperation with the Oregon Watershed Enhancement Board, Oregon Wildlife Heritage Foundation, Oregon State University Coastal Oregon Marine Experiment Station, Restoration and Enhancement Program, and ODFW volunteers.

Contact Person:

Name: Dave Loomis

Address: ODFW Southwest Regional Office  
4192 North Umpqua Highway  
Roseburg, OR 97470

Phone: (541) 440-3353

Fax: (541) 673-0372

Email: david.w.loomis@state.or.us

### **Willamette Salmonid Inventory Project**

The Willamette Salmonid Inventory Project was created in 2002 in response to the NMFS Biological Opinion on hatchery operations in the Willamette Valley. Project activities fall into four broad categories: 1) trapping of adults, 2) sampling of hatchery returns, 3) monitoring natural production, and 4) fishery assessments (creel surveys). Project objectives include:

*Objective 1)* Manage programs to minimize potential interbreeding of hatchery reared fish and listed salmon and steelhead in the Columbia River Basin. The result would be to reduce natural spawning of hatchery-origin spring chinook with existing spring chinook salmon populations.

*Objective 2)* Quantify the effects of hatchery broodstock collection on listed spring chinook and winter steelhead in the Upper Willamette River ESU.

*Objective 3)* Minimize potential negative impacts to listed salmon and steelhead in the Upper Willamette Basin from operation of the hatcheries.

*Objective 4)* Monitor and evaluate each respective hatchery program in the Upper Willamette River ESU

Contact Person:

Name: Julie Firman

Address: Oregon Department of Fish and Wildlife  
28655 Hwy 34  
Corvallis, OR 97333

Phone: (541) 757-4263 ex249

Fax: (541) 757-4102

Email: julie.firman@oregonstate.edu

Relevant Web Page(s): <http://oregonstate.edu/Dept/ODFW/willamette/index.html>

### **Willamette Spring Chinook Research**

This Willamette Spring Chinook Project hopes to help managers collect information that will lead to a management strategy for spring chinook salmon in the Willamette and Sandy basins that (1) protects the genetic integrity of natural populations, and (2) maintains sport and commercial fisheries and the programs that support them. A research proposal was created in 1996 with five objectives:

- Objective 1)* Determine the numerical status of existing natural populations and develop methods for monitoring that status. Determine if these populations belong to one or more gene conservation groups.
- Objective 2)* Decrease mortality of wild fish in fisheries by determining feasibility of catch and release sport fisheries and by exploring options for reducing mortality in commercial fisheries.
- Objective 3)* Reduce the risk that large hatchery programs pose for natural populations by developing ways of decreasing interactions between wild and hatchery chinook in streams and by determining need for more wild fish in hatchery broodstocks.
- Objective 4)* Protect existing natural production areas by defining temporal and spatial use patterns by life stages of spring chinook and identify the habitat/environmental attributes conducive to that use.
- Objective 5)* Increase natural production by improving habitat in existing production areas and by re-establishing populations where they were found historically.

**Contact Person:**

Name: Ken Kenaston and Kirk Schroeder

Address: Oregon Department of Fish and Wildlife  
28655 Hwy 34  
Corvallis, OR 97333

Phone: (541) 757-4263 ex253 (Ken) ex 251 (Kirk) Fax: (541) 757-4102

Email: [ken.kenaston@oregonstate.edu](mailto:ken.kenaston@oregonstate.edu), [kirk.schroeder@oregonstate.edu](mailto:kirk.schroeder@oregonstate.edu)

Relevant Web Page(s): <http://oregonstate.edu/Dept/ODFW/freshwater/chinook/Introduction.htm>

**Table 1. Pounds of Fish Raised at ODFW Facilities in 2003**

Hatchery	Species	Pounds Received	Pounds Liberated	Pounds Acclimated	Pounds Transferred	Pounds Shipped	Pounds Destroyed	Total Pounds Produced
ALSEA	Rainbow Trout	12,707	96,351	0	1,821	0	390	85,855
	Winter Steelhead	0	26,750	10,610	0	0	786	38,146
	Total	12,707	123,101	10,610	1,821	0	1,176	124,001
BANDON	Coho	2,170	2,170	0	0	0	0	0
	Fall Chinook	0	0	7,275	114	0	0	7,389
	Rainbow Trout	5,117	7,410	0	0	0	0	2,293
	Winter Steelhead	0	14,207	18,715	0	0	0	32,922
	Total	7,287	23,787	25,990	114	0	0	42,604
BIG CANYON	Summer Steelhead	61,800	68,100	0	0	0	0	6,300
BIG CREEK	Coho	0	43,854	0	0	0	0	43,854
	Fall Chinook	0	76,333	0	38,765	0	0	115,098
	Winter Steelhead	0	8,935	0	9,967	0	0	18,902
	Total	0	129,122	0	48,732	0	0	177,854
BLACKBERRY ACC	Spring Chinook	4,955	4,892	0	0	0	0	-63
	Summer Steelhead	5,685	9,089	0	0	0	0	3,404
	Total	10,640	13,981	0	0	0	0	3,341
BONNEVILLE	Coho	57,016	96,928	0	0	11	0	39,923
	Fall Chinook	0	108,652	36,780	0	31,987	263	177,682
	Spring Chinook	45	0	2,650	0	0	0	2,605
	Summer Steelhead	0	1,190	21,275	3,090	3	0	25,558
	Winter Steelhead	1,033	727	6,465	9,935	0	0	16,094
	Total	58,094	207,497	67,170	13,025	32,001	263	261,862
BUTTE FALLS	Coho	0	4,280	5,240	7,097	0	0	16,617
	Fall Chinook	0	0	7,106	0	0	0	7,106
	Rainbow Trout	5,669	25,865	0	609	0	0	20,805
	Total	5,669	30,145	12,346	7,706	0	0	44,528
CANYONVILLE	Winter Steelhead	10,128	10,522	0	0	0	0	394
CASCADE	Coho	0	0	62,170	38,748	27,090	1,520	129,528
CATHERINE CR ACC	Spring Chinook	10,201	10,194	0	0	0	0	-7

**Table 1. Pounds of Fish Raised at ODFW Facilities in 2003**

<b>Hatchery</b>	<b>Species</b>	<b>Pounds Received</b>	<b>Pounds Liberated</b>	<b>Pounds Acclimated</b>	<b>Pounds Transferred</b>	<b>Pounds Shipped</b>	<b>Pounds Destroyed</b>	<b>Total Pounds Produced</b>
CEDAR CREEK	Fall Chinook	0	0	0	252	0	0	252
	Rainbow Trout	195	487	273	0	0	0	565
	Spring Chinook	0	8,313	0	0	0	0	8,313
	Summer Steelhead	0	8,313	0	0	0	0	8,313
	Winter Steelhead	0	16,558	0	1,338	0	0	17,896
	<b>Total</b>	<b>195</b>	<b>33,671</b>	<b>273</b>	<b>1,590</b>	<b>0</b>	<b>0</b>	<b>35,339</b>
CLACKAMAS	Spring Chinook	56,815	86,438	18,430	0	0	0	48,053
	Summer Steelhead	17,645	20,679	0	0	0	0	3,034
	Winter Steelhead	19,575	19,075	174	0	0	0	-326
	<b>Total</b>	<b>94,035</b>	<b>126,192</b>	<b>18,604</b>	<b>0</b>	<b>0</b>	<b>0</b>	<b>50,761</b>
COLE RIVERS	Coho	0	19,683	10,669	0	0	0	30,352
	Fall Chinook	0	0	9,690	0	0	0	9,690
	Rainbow Trout	2,122	120,484	0	59,622	0	0	177,984
	Spring Chinook	0	198,554	0	0	0	0	198,554
	Summer Steelhead	0	55,146	0	0	0	0	55,146
	Winter Steelhead	0	88,155	16,994	0	0	0	105,149
	<b>Total</b>	<b>2,122</b>	<b>482,022</b>	<b>37,353</b>	<b>59,622</b>	<b>0</b>	<b>0</b>	<b>576,875</b>
DEXTER POND	Spring Chinook	22,418	172,058	0	0	0	0	149,640
	Summer Steelhead	13,912	20,624	0	0	0	0	6,712
	<b>Total</b>	<b>36,330</b>	<b>192,682</b>	<b>0</b>	<b>0</b>	<b>0</b>	<b>0</b>	<b>156,352</b>
ELK RIVER	Fall Chinook	0	50,821	0	0	0	0	50,821
	Rainbow Trout	160	2,686	0	0	143	0	2,669
	Winter Steelhead	0	8,755	0	0	0	0	8,755
	<b>Total</b>	<b>160</b>	<b>62,262</b>	<b>0</b>	<b>0</b>	<b>143</b>	<b>0</b>	<b>62,245</b>
FALL CREEK	Rainbow Trout	4,287	12,707	0	0	0	0	8,420
FALL RIVER	Brook Trout	617	493	0	659	0	0	535
	Cutthroat Trout	911	219	0	236	0	0	-456
	Rainbow Trout	16,624	33,322	0	15,506	0	0	32,204
	<b>Total</b>	<b>18,152</b>	<b>34,034</b>	<b>0</b>	<b>16,401</b>	<b>0</b>	<b>0</b>	<b>32,283</b>
GNAT CREEK	Spring Chinook	0	0	0	33,395	0	0	33,395
	Winter Steelhead	3,934	0	0	0	0	0	-3,934
	<b>Total</b>	<b>3,934</b>	<b>0</b>	<b>0</b>	<b>33,395</b>	<b>0</b>	<b>0</b>	<b>29,461</b>
UPPER HERMAN CR	Coho	15,846	0	49,874	30,580	0	0	64,608
IMNAHA POND	Spring Chinook	16,512	16,508	0	0	0	0	-4

**Table 1. Pounds of Fish Raised at ODFW Facilities in 2003**

<b>Hatchery</b>	<b>Species</b>	<b>Pounds Received</b>	<b>Pounds Liberated</b>	<b>Pounds Acclimated</b>	<b>Pounds Transferred</b>	<b>Pounds Shipped</b>	<b>Pounds Destroyed</b>	<b>Total Pounds Produced</b>
IRRIGON	Rainbow Trout	20,772	27,943	0	0	0	0	7,171
	Spring Chinook	0	2,151	0	0	0	0	2,151
	Summer Steelhead	0	21,488	223,740	0	0	0	245,228
	Winter Steelhead	0	0	34,060	650	0	0	34,710
	<b>Total</b>	<b>20,772</b>	<b>51,582</b>	<b>257,800</b>	<b>650</b>	<b>0</b>	<b>0</b>	<b>289,260</b>
KLAMATH	Brook Trout	278	274	0	0	0	0	-4
	Brown Trout	0	6,064	0	0	0	0	6,064
	Cutthroat Trout	8	8	0	0	0	0	0
	Lake Trout	0	3,652	0	0	0	0	3,652
	Rainbow Trout	712	39,021	0	8,302	0	0	46,611
<b>Total</b>	<b>998</b>	<b>49,019</b>	<b>0</b>	<b>8,302</b>	<b>0</b>	<b>0</b>	<b>56,323</b>	
KLASKANINE	Fall Chinook	32,350	33,401	0	0	0	0	1,051
	Winter Steelhead	6,033	8,190	0	0	0	0	2,157
	<b>Total</b>	<b>38,383</b>	<b>41,591</b>	<b>0</b>	<b>0</b>	<b>0</b>	<b>0</b>	<b>3,208</b>
LOWER HERMAN CR	Coho	15,305	0	30,655	6,005	0	0	21,355
LEABURG	Cutthroat Trout	46	0	0	0	0	1,530	1,484
	Rainbow Trout	57,315	82,984	0	0	0	36,057	61,726
	Summer Steelhead	10,995	23,333	0	0	0	0	12,338
	<b>Total</b>	<b>68,356</b>	<b>106,317</b>	<b>0</b>	<b>0</b>	<b>0</b>	<b>37,587</b>	<b>75,548</b>
LITTLE SHEEP CR	Summer Steelhead	45,630	60,313	0	0	0	0	14,683
LOOKINGGLASS	Spring Chinook	3,643	0	58,308	92	0	0	54,757
MARION FORKS	Brook Trout	15	17	0	0	0	0	2
	Cutthroat Trout	0	3	0	0	0	0	3
	Rainbow Trout	2,454	6,664	0	0	0	0	4,210
	Spring Chinook	4,155	1,909	47,916	102,556	20	0	148,246
	<b>Total</b>	<b>6,624</b>	<b>8,593</b>	<b>47,916</b>	<b>102,556</b>	<b>20</b>	<b>0</b>	<b>152,461</b>
MCKENZIE	Spring Chinook	0	130,139	0	0	0	250	130,389
MINTO POND	Summer Steelhead	28,195	29,695	0	0	0	0	1,500

**Table 1. Pounds of Fish Raised at ODFW Facilities in 2003**

<b>Hatchery</b>	<b>Species</b>	<b>Pounds Received</b>	<b>Pounds Liberated</b>	<b>Pounds Acclimated</b>	<b>Pounds Transferred</b>	<b>Pounds Shipped</b>	<b>Pounds Destroyed</b>	<b>Total Pounds Produced</b>
NEHALEM	Coho	0	7,322	6,615	0	0	0	13,937
	Fall Chinook	470	1,440	0	0	0	0	970
	Rainbow Trout	0	36,579	0	735	0	0	37,314
	Winter Steelhead	0	23,469	0	0	0	0	23,469
	Total	470	68,810	6,615	735	0	0	75,690
OAK SPRINGS	Cutthroat Trout	0	157	0	491	0	0	648
	Rainbow Trout	252	134,972	0	14,331	0	643	149,694
	Summer Steelhead	0	5,620	15,278	14,315	0	0	35,213
	Winter Steelhead	174	0	16,763	302	0	0	16,891
	Total	426	140,749	32,041	29,439	0	643	202,446
OXBOW	Coho	6,155	0	0	15,305	0	0	9,150
	Spring Chinook	0	0	3,667	0	0	0	3,667
	Winter Steelhead	0	0	0	1,033	0	0	1,033
	Total	6,155	0	3,667	16,338	0	0	13,850
ROARING RIVER	Rainbow Trout	0	104,856	0	9,374	1	0	114,231
	Summer Steelhead	1,210	7,875	15,180	920	0	580	23,345
	Winter Steelhead	675	9,880	0	0	0	0	9,205
	Total	1,885	122,611	15,180	10,294	1	580	146,781
ROCK CREEK	Coho	9,517	10,933	0	0	0	0	1,416
	Rainbow Trout	2,634	4,426	0	0	0	0	1,792
	Spring Chinook	0	82,881	0	0	0	0	82,881
	Summer Steelhead	0	18,441	0	0	0	0	18,441
	Winter Steelhead	0	150	11,823				11,973
	Total	12,151	116,831	11,823	0	0	0	116,503
ROUND BUTTE	Spring Chinook	0	39,175	5,939	4,945	0	3,436	53,495
	Summer Steelhead	100	55,525	0	0	0	130	55,555
	Total	100	94,700	5,939	4,945	0	3,566	109,050
SALMON RIVER	Coho	0	19,057	1,020	0	0	202	20,279
	Fall Chinook	0	14,023	8,007	0	0	333	22,363
	Summer Steelhead	0	11,180	0	0	0	0	11,180
	Total	0	44,260	9,027	0	0	535	53,822

**Table 1. Pounds of Fish Raised at ODFW Facilities in 2003**

<b>Hatchery</b>	<b>Species</b>	<b>Pounds Received</b>	<b>Pounds Liberated</b>	<b>Pounds Acclimated</b>	<b>Pounds Transferred</b>	<b>Pounds Shipped</b>	<b>Pounds Destroyed</b>	<b>Total Pounds Produced</b>
SANDY	Brook Trout	145	137	0	0	0	0	-8
	Coho	0	52,495	0	21,030	0	0	73,525
	Rainbow Trout	36	27	0	0	0	0	-9
	Spring Chinook	13,625	15,388	0	0	0	0	1,763
	Summer Steelhead	12,338	12,706	0	0	0	0	368
	Winter Steelhead	31,535	34,126	0	0	0	0	2,591
	<b>Total</b>	<b>57,679</b>	<b>114,879</b>	<b>0</b>	<b>21,030</b>	<b>0</b>	<b>0</b>	<b>78,230</b>
SOUTH SANTIAM	Rainbow Trout	850	1,335	0	0	0	0	485
	Spring Chinook	37,204	84,566	0	0	0	0	47,362
	Summer Steelhead	1,640	29,384	13,015	0	0	797	41,556
	<b>Total</b>	<b>39,694</b>	<b>115,285</b>	<b>13,015</b>	<b>0</b>	<b>0</b>	<b>797</b>	<b>89,403</b>
TRASK	Coho	6,615	7,356	0	0	0	0	741
	Fall Chinook	0	74	470	0	0	0	544
	Rainbow Trout	143	45	0	0	0	0	-98
	Spring Chinook	0	4,358	0	4,071	0	0	8,429
	Summer Steelhead	0	4,170	1,590	0	0	0	5,760
	Winter Steelhead	0	3,565	1,183	0	0	0	4,748
	<b>Total</b>	<b>6,758</b>	<b>19,568</b>	<b>3,243</b>	<b>4,071</b>	<b>0</b>	<b>0</b>	<b>20,124</b>
TRASK POND	Spring Chinook	2,893	10,015	0	0	0	0	7,122
TUFFY CREEK	Spring Chinook	1,178	8,100	0	0	0	0	6,922
	Winter Steelhead	1,338	9,943	1,370	0	0	0	9,975
	<b>Total</b>	<b>2,516</b>	<b>18,043</b>	<b>1,370</b>	<b>0</b>	<b>0</b>	<b>0</b>	<b>16,897</b>
UMATILLA	Fall Chinook	0	11,969	4,001	0	8,018	0	23,988
	Spring Chinook	0	0	32,458	0	0	0	32,458
	Summer Steelhead	0	0	25,700	0	0	0	25,700
	<b>Total</b>	<b>0</b>	<b>11,969</b>	<b>62,159</b>	<b>0</b>	<b>8,018</b>	<b>0</b>	<b>82,146</b>
WALLOWA	Spring Chinook	0	6	0	0	0	0	6
	Summer Steelhead	116,310	132,890	0	0	0	0	16,580
	<b>Total</b>	<b>116,310</b>	<b>132,896</b>	<b>0</b>	<b>0</b>	<b>0</b>	<b>0</b>	<b>16,586</b>
WILLAMETTE	Rainbow Trout	21,451	59,460	0	22,042	0	0	60,051
	Spring Chinook	0	66,005	23,794	56,616	45	1,198	147,658
	Summer Steelhead	1,290	0	0	13,912	0	0	12,622
	Winter Steelhead	0	0	0	675	0	0	675
	<b>Total</b>	<b>22,741</b>	<b>125,465</b>	<b>23,794</b>	<b>93,245</b>	<b>45</b>	<b>1,198</b>	<b>221,006</b>

**Table 1. Pounds of Fish Raised at ODFW Facilities in 2003**

<b>Hatchery</b>	<b>Species</b>	<b>Pounds Received</b>	<b>Pounds Liberated</b>	<b>Pounds Acclimated</b>	<b>Pounds Transferred</b>	<b>Pounds Shipped</b>	<b>Pounds Destroyed</b>	<b>Total Pounds Produced</b>
WIZARD FALLS	Atlantic Salmon	0	3,279	0	0	0	0	3,279
	Brook Trout	221	661	0	617	0	150	1,207
	Cutthroat Trout	228	588	0	466	0	0	826
	Kokanee	0	6,279	0	0	0	697	6,976
	Rainbow Trout	6,798	23,912	0	18,219	0	1,643	36,976
	Total	7,247	34,719	0	19,302	0	2,490	49,264

**Table 2. Numbers and Pounds of Fish Released in Calendar Year 2003**

REGION: NORTHWEST			FRY		FINGERLING		SMOLT		TOTAL STOCKED	
HATCHERY	SPECIES	STOCK	NUMBER	POUNDS	NUMBER	POUNDS	NUMBER	POUNDS	NUMBER	POUNDS
Alsea	Rainbow Trout	072					204,085	96,322	204,085	96,322
	Winter Steelhead	043					109,390	20,023	109,390	20,023
	Winter Steelhead	043W					39,341	6,725	39,341	6,725
Big Creek	Coho	013					537,086	43,853	537,086	43,853
	Fall Chinook	013			5,764,833	76,333			5,764,833	76,333
	Winter Steelhead	013					59,846	8,935	59,846	8,935
Bonneville	Coho	014					1,243,477	96,928	1,243,477	96,928
	Fall Chinook	095	399,767	3,160	158,780	1,779			558,547	4,939
	Fall Chinook	095M			4,440,711	103,710			4,440,711	103,710
	Rainbow Trout	072					216	72	216	72
	Summer Steelhead	024			25,846	1,189			25,846	1,189
	Winter Steelhead	011W					8,947	727	8,947	727
Cedar Creek	Rainbow Trout	072					222	487	222	487
	Spring Chinook	047			18,800	188	110,467	8,120	129,267	8,308
	Summer Steelhead	047			45,920	1,443	44,241	6,867	90,161	8,310
	Winter Steelhead	034W					12,523	2,020	12,523	2,020
	Winter Steelhead	047					51,224	8,918	51,224	8,918
	Winter Steelhead	047W			177	3	37,021	5,616	37,198	5,619
Clackamas	Spring Chinook	019			286,998	16,932	682,100	69,506	969,098	86,438
	Summer Steelhead	024					128,210	20,679	128,210	20,679
	Winter Steelhead	122					99,181	19,076	99,181	19,076
Dexter Pond	Spring Chinook	022					1,524,838	172,058	1,524,838	172,058
	Summer Steelhead	024					94,252	20,624	94,252	20,624
Klaskanine	Fall Chinook	052			199,640	4,675	502,579	28,725	702,219	33,400
	Winter Steelhead	013					59,784	8,190	59,784	8,190
Leaburg	Rainbow Trout	072					210,823	82,893	210,823	82,893
	Summer Steelhead	024					146,196	23,333	146,196	23,333
Marion Forks	Brook Trout	058			3,813	15			3,813	15
	Cutthroat	119			5,196	3			5,196	3
	Rainbow Trout	053			256,320	6,640			256,320	6,640
	Rainbow Trout	072			13,226	26			13,226	26
	Spring Chinook	021	2,000	10	101,021	1,899			103,021	1,909
McKenzie	Spring Chinook	023			68,396	813	1,200,738	129,326	1,269,134	130,139
Minto Pond	Spring Chinook	021					669,616	50,347	669,616	50,347
	Summer Steelhead	024					137,303	29,695	137,303	29,695
Nehalem	Coho	032					101,704	6,947	101,704	6,947
	Coho	034			4,142	148			4,142	148
	Coho	099			1,825	70	1,758	156	3,583	226
	Fall Chinook	034					25,898	1,440	25,898	1,440
	Rainbow Trout	072			46,593	855	83,995	35,722	130,588	36,577
	Winter Steelhead	032	20,027	149	12,788	524	88,463	12,140	121,278	12,813
	Winter Steelhead	099	4,522	41	9,714	450	41,161	7,164	55,397	7,655

**Table 2. Numbers and Pounds of Fish Released in Calendar Year 2003**

REGION: NORTHWEST			FRY		FINGERLING		SMOLT		TOTAL STOCKED	
HATCHERY	SPECIES	STOCK	NUMBER	POUNDS	NUMBER	POUNDS	NUMBER	POUNDS	NUMBER	POUNDS
Palmer Cr. Acc.	Winter Steelhead	033W					59,400	10,607	59,400	10,607
Roaring River	Rainbow Trout	072			97,330	1,484	260,741	103,344	358,071	104,828
	Summer Steelhead	024					41,982	7,875	41,982	7,875
	Winter Steelhead	038W					58,119	9,878	58,119	9,878
Salmon River	Coho	033					196,291	19,057	196,291	19,057
	Fall Chinook	036					196,335	14,024	196,335	14,024
	Summer Steelhead	033					70,993	11,180	70,993	11,180
Sandy	Brook Trout	058			35,028	140			35,028	140
	Coho	011					772,939	52,495	772,939	52,495
	Rainbow Trout	072			8,449	27			8,449	27
	Spring Chinook	019			148,648	15,388			148,648	15,388
	Summer Steelhead	024					73,029	12,706	73,029	12,706
	Winter Steelhead	011W					178,293	34,126	178,293	34,126
South Santiam	Rainbow Trout	072					2,376	1,335	2,376	1,335
	Spring Chinook	024					754,287	84,566	754,287	84,566
	Summer Steelhead	024					126,789	29,384	126,789	29,384
STEP <sup>1</sup> Bio 01	Fall Chinook	047					105,085	7,729	105,085	7,729
	Spring Chinook	034			12,856	640			12,856	640
	Summer Steelhead	047					10,002	1,588	10,002	1,588
	Winter Steelhead	047					9,986	1,368	9,986	1,368
STEP Bio 07	Spring Chinook	019					50,244	4,803	50,244	4,803
	Winter Steelhead	122W					22,500	3,826	22,500	3,826
Trask	Coho	034					97,355	7,355	97,355	7,355
	Fall Chinook	034			4,410	74			4,410	74
	Rainbow Trout	072			13	1	131	45	144	46
	Spring Chinook	034	27,218	217			43,937	4,141	71,155	4,358
	Summer Steelhead	047					26,251	4,166	26,251	4,166
	Winter Steelhead	121W					21,533	3,565	21,533	3,565
Trask Pond	Spring Chinook	034					117,278	10,006	117,278	10,006
Tuffy Creek <sup>2</sup>	Spring Chinook	034					96,477	8,093	96,477	8,093
	Winter Steelhead	047					72,562	9,940	72,562	9,940
Willamette	Rainbow Trout	053			51,876	396			51,876	396
	Rainbow Trout	072					170,813	59,038	170,813	59,038
	Spring Chinook	019					144,090	16,010	144,090	16,010
	Spring Chinook	022	51,800	400			94,176	10,270	145,976	10,670
	Spring Chinook	024					366,963	39,320	366,963	39,320
<b>REGION TOTALS</b>			<b>505,334</b>	<b>3,977</b>	<b>11,823,349</b>	<b>235,845</b>	<b>12,497,642</b>	<b>1,605,474</b>	<b>24,826,325</b>	<b>1,845,296</b>

<sup>1</sup>Salmon Trout Enhancement Program – ODFW

<sup>2</sup>Rearing site operated in cooperation with an Oregon Dept. of Corrections facility

**Table 2. Numbers and Pounds of Fish Released in Calendar Year 2003**

REGION: SOUTHWEST			FRY		FINGERLING		SMOLT		TOTAL STOCKED	
HATCHERY	SPECIES	STOCK	NUMBER	POUNDS	NUMBER	POUNDS	NUMBER	POUNDS	NUMBER	POUNDS
Bandon	Rainbow Trout	072					3,354	7,409	3,354	7,409
	Winter Steelhead	044			1,695	30	24,138	4,642	25,833	4,672
	Winter Steelhead	144			3,810	110	50,895	9,425	54,705	9,535
Butte Falls	Coho	044					20,517	1,850	20,517	1,850
	Coho	055					24,373	2,430	24,373	2,430
	Rainbow Trout	053			414,631	4,950			414,631	4,950
	Rainbow Trout	072			10,818	450	49,996	20,457	60,814	20,907
Canyonville Acc.	Winter Steelhead	018					65,949	10,522	65,949	10,522
Cole Rivers	Coho	052	32,479	125			210,892	19,559	243,371	19,684
	Rainbow Trout	072			4,300	152	332,222	120,165	336,522	120,317
	Spring Chinook	052			216,223	3,368	1,957,760	195,185	2,173,983	198,553
	Summer Steelhead	052			69,334	3,955	219,623	51,190	288,957	55,145
	Winter Steelhead	052			22,796	1,000	172,013	47,824	194,809	48,824
	Winter Steelhead	062					165,856	39,328	165,856	39,328
Elk River	Fall Chinook	035					333,417	38,895	333,417	38,895
	Fall Chinook	096					153,681	11,926	153,681	11,926
	Rainbow Trout	072					1,055	2,687	1,055	2,687
	Winter Steelhead	096					55,685	8,754	55,685	8,754
Rock Creek	Coho	018					46,575	4,767	46,575	4,767
	Coho	055					60,242	6,166	60,242	6,166
	Rainbow Trout	053			140,332	439			140,332	439
	Rainbow Trout	071					24,298	3,985	24,298	3,985
	Spring Chinook	055			79,716	676	529,974	82,075	609,690	82,751
	Summer Steelhead	055					106,628	18,442	106,628	18,442
	Winter Steelhead	018					1,206	150	1,206	150
STEP Bio 04	Fall Chinook	061			54,452	2,315	25,770	2,207	80,222	4,522
STEP Bio 05	Coho	018					14,980	1,446	14,980	1,446
	Fall Chinook	018			96,680	1,179			96,680	1,179
	Winter Steelhead	018					11,536	1,838	11,536	1,838
<b>REGION TOTALS</b>			<b>32,479</b>	<b>125</b>	<b>1,114,787</b>	<b>18,624</b>	<b>4,662,635</b>	<b>713,324</b>	<b>5,809,901</b>	<b>732,073</b>

**Table 2. Numbers and Pounds of Fish Released in Calendar Year 2003**

REGION: NORTHEAST			FRY		FINGERLING		SMOLT		TOTAL STOCKED	
HATCHERY	SPECIES	STOCK	NUMBER	POUNDS	NUMBER	POUNDS	NUMBER	POUNDS	NUMBER	POUNDS
Big Canyon	Summer Steelhead	056					294,135	68,100	294,135	68,100
Bonifer Pond <sup>3</sup>	Summer Steelhead	091					41,369	8,619	41,369	8,619
Catherine Cr. Acc. <sup>3</sup>	Spring Chinook	201F					105,292	8,258	105,292	8,258
	Spring Chinook	201W					24,392	1,936	24,392	1,936
Grande Ronde Acc. <sup>3</sup>	Spring Chinook	080F					210,113	12,001	210,113	12,001
	Spring Chinook	080W					26,923	1,965	26,923	1,965
Irrigon	Rainbow Trout	072					83,370	27,484	83,370	27,484
	Rainbow Trout	156					2,494	423	2,494	423
	Summer Steelhead	029					114,110	21,320	114,110	21,320
	Summer Steelhead	056					972	168	972	168
Imeques <sup>3</sup>	Spring Chinook	091			322,806	19,074	459,300	37,622	782,106	56,696
Imnaha Pond	Spring Chinook	029			268,426	16,508			268,426	16,508
Little Sheep	Summer Steelhead	029					259,342	60,313	259,342	60,313
Lostine Acc. <sup>4</sup>	Spring Chinook	200F					141,867	9,192	141,867	9,192
	Spring Chinook	200W			100,882	5,566			100,882	5,566
Minthorn Pond <sup>3</sup>	Summer Steelhead	091					42,805	10,701	42,805	10,701
Pendleton Acc.	Summer Steelhead	091					42,783	9,723	42,783	9,723
Thornhollow <sup>3</sup>	Fall Chinook	091			313,383	5,740	509,135	43,555	822,518	49,295
Umatilla	Fall Chinook	045			311,406	6,431			311,406	6,431
	Fall Chinook	091			311,406	5,537			311,406	5,537
Wallowa Acc.	Spring Chinook	200F					66	6	66	6
	Summer Steelhead	056					533,268	132,890	533,268	132,890
<b>REGION TOTALS</b>			<b>0</b>	<b>0</b>	<b>1,628,309</b>	<b>58,856</b>	<b>2,891,736</b>	<b>454,276</b>	<b>4,520,045</b>	<b>513,132</b>

<sup>3</sup>Operated by the Confederated Tribes of the Umatilla Indian Reservation (CTUIR)

<sup>4</sup>Operated by the Nez Perce Tribe

**Table 2. Numbers and Pounds of Fish Released in Calendar Year 2003**

REGION: HIGH DESERT			FRY		FINGERLING		SMOLT		TOTAL STOCKED	
HATCHERY	SPECIES	STOCK	NUMBER	POUNDS	NUMBER	POUNDS	NUMBER	POUNDS	NUMBER	POUNDS
Blackberry Acc. <sup>5</sup>	Spring Chinook	066					55,628	4,893	55,628	4,893
	Summer Steelhead	050W					47,513	9,091	47,513	9,091
EFID <sup>5</sup>	Winter Steelhead	050W					25,090	4,320	25,090	4,320
Fall River	Brook Trout	058			109,652	480			109,652	480
	Cutthroat	119			44,987	229			44,987	229
	Rainbow Trout	066					30,514	11,170	30,514	11,170
	Rainbow Trout	072			69,897	276	62,675	18,586	132,572	18,862
	Rainbow Trout	127			125,013	2,441			125,013	2,441
	Rainbow Trout	127W			47,142	834			47,142	834
Jones Cr. Acc. <sup>5</sup>	Spring Chinook	066					40,074	3,432	40,074	3,432
Klamath	Brook Trout	058			58,093	281			58,093	281
	Brown Trout	058					48,707	6,060	48,707	6,060
	Cutthroat	119			1,545	8			1,545	8
	Rainbow Trout	053			527,656	9,627			527,656	9,627
	Rainbow Trout	072			62,289	1,419	68,853	2,794	131,142	4,213
Oak Springs	Cutthroat	119			27,460	157			27,460	157
	Rainbow Trout	053			659,438	17,426	236,687	31,766	896,125	49,192
	Rainbow Trout	053B					3,391	17,572	3,391	17,572
	Rainbow Trout	066			56,850	1,009	9,541	3,575	66,391	4,584
	Rainbow Trout	066B					173	1,576	173	1,576
	Rainbow Trout	072					172,842	61,980	172,842	61,980
	Summer Steelhead	024					28,981	5,425	28,981	5,425
	Summer Steelhead	066					1,209	195	1,209	195
Parkdale <sup>5</sup>	Spring Chinook	066					30,661	2,377	30,661	2,377
	Winter Steelhead	050W					26,343	4,812	26,343	4,812
Round Butte	Spring Chinook	066					336,552	39,175	336,552	39,175
	Summer Steelhead	066					197,612	55,525	197,612	55,525
Wizard Falls	Atlantic Salmon	123					11,981	3,272	11,981	3,272
	Brook Trout	058			78,711	659			78,711	659
	Cutthroat	119			30,896	151	1,926	439	32,822	590
	Kokanee	067			633,687	6,279			633,687	6,279
	Rainbow Trout	053			563,540	8,101			563,540	8,101
	Rainbow Trout	072			21,293	95	27,124	10,934	48,417	11,029
	Rainbow Trout	127					6,561	1,057	6,561	1,057
	Rainbow Trout	127W					67,797	3,698	67,797	3,698
<b>REGION TOTALS</b>			<b>0</b>	<b>0</b>	<b>3,118,149</b>	<b>49,472</b>	<b>1,538,435</b>	<b>303,724</b>	<b>4,656,584</b>	<b>353,196</b>
<b>STATEWIDE TOTALS</b>			<b>537,813</b>	<b>4,102</b>	<b>17,684,594</b>	<b>362,797</b>	<b>21,590,448</b>	<b>3,076,798</b>	<b>39,812,855</b>	<b>3,443,697</b>

<sup>5</sup>Operated by the Confederated Tribes of the Warm Springs Indian Reservation

**Table 3. Fish Produced by ODFW Hatcheries for Release Outside Oregon**

<b>HATCHERY</b>	<b>SPECIES</b>	<b>STOCK</b>	<b>TOTAL SHIPPED</b>		<b>SHIPPED TO</b>
			<b>NUMBER</b>	<b>POUNDS</b>	
Bonneville	Fall Chinook	095	3,553,250	31,987	Washington
Cascade	Coho	508	571,611	27,090	Washington

**Table 4. NUMBER AND POUNDS OF FISH STOCKED BY WATERSHED IN CALENDAR YEAR 2003**

Water-shed	Drainage Basin		Trout				Steelhead		Chinook Salmon		Coho Salmon	Atlantic Salmon		Total	
			Rainbow	Cutthroat	Brook	Brown	Summer	Winter	Spring	Fall		Kokanee	Misc.*		
1	North Coast	no.	135,544				126,414	501,349	1,362,762	7,382,850	4,064,652			13,573,571	
		lb.	37,624				14,065	72,022	112,836	158,652	338,194			733,393	
2	Willamette	no.	1,307,289	41,865	51,146		546,522		4,833,835			202,006	7,500	6,990,163	
		lb.	263,536	181	215		110,911		489,009			1,910	750	866,512	
3	Clackamas/Sandy	no.	177,961	6,489	27,970		227,085	308,921	1,312,080	4,999,258	2,016,416		1,493	9,077,673	
		lb.	58,415	32	108		34,574	57,755	122,639	108,652	149,423		149	531,747	
4	Hood	no.	71,635		5,759		77,703	51,433	126,363					332,893	
		lb.	22,617		24		14,709	9,132	10,701					57,183	
5	Deschutes	no.	883,037	63,656	112,666	36,828	197,612		336,552		11,981	431,681	2,600	2,076,613	
		lb.	103,365	762	606	4,725	55,525		39,175		3,272	4,368	867	212,665	
6	John Day	no.	44,070		7,488									51,558	
		lb.	6,558		153									6,711	
7	Umatilla	no.	48,119				126,957		782,106	1,445,330				2,402,512	
		lb.	11,353				29,043		56,695	61,261				158,352	
8	Grande Ronde	no.	114,219		4,980		1,201,827		877,961					2,198,987	
		lb.	32,332		102		282,790		58,432					373,656	
9	Powder	no.	543,974											543,974	
		lb.	37,175											37,175	
10	Malheur	no.	185,987											185,987	
		lb.	2,329											2,329	
11	Owyhee	no.	82,704											82,704	
		lb.	1,334											1,334	
12	Malheur Lake	no.	67,014											67,014	
		lb.	8,519											8,519	
13	Goose & Summer Lakes	no.	221,621		5,077									226,698	
		lb.	16,358		24									16,382	
14	Klamath	no.	111,322		24,924	11,879							22,978	171,103	
		lb.	12,945		117	1,336							3,647	18,045	
15	Rogue	no.	922,086		30,069		288,957	360,665	2,173,983	80,222	243,371			4,099,353	
		lb.	111,529		152		55,145	88,151	198,552	4,522	19,683			477,734	
16	Umpqua	no.	208,518		15,218		106,628	78,691	609,690	96,680	146,170			1,261,595	
		lb.	58,323		63		18,441	12,509	82,752	1,179	14,809			188,076	
17	South Coast	no.	66,343					136,223		487,098	20,517			710,181	
		lb.	37,961					22,961		50,821	1,850			113,593	
18	Mid Coast	no.	155,062				70,993	266,250		196,335	196,291			884,931	
		lb.	76,197				11,180	47,232		14,024	19,057			167,690	
TOTAL NUMBERS			5,346,505	112,010	285,297	48,707	2,970,698	1,703,532	12,415,332	14,687,773	6,687,417	11,981	633,687	34,571	44,937,510
TOTAL POUNDS			898,470	975	1,564	6,061	626,383	309,762	1,170,791	399,111	543,016	3,272	6,278	5,413	3,971,096

\* Misc. includes Lake Trout, Catfish, Black Crappie, and Largemouth Bass

**Table 5. Fish produced outside ODFW Hatcheries for release in Oregon**

SOURCE	SPECIES	STOCK	TOTAL STOCKED	
			NUMBER	POUNDS
Desert Springs	Rainbow Trout	103	179,360	90,100
CEDC*	Coho (reared at Sandy)	011	316,804	24,370
	Coho (reared at Oxbow)	014	1,371,956	123,815
	Coho (reared at CEDC)	015	641,555	53,463
	Coho (reared at Eagle Creek NFH)	019	990,467	780,415
	Fall Chinook (reared at Big Creek)	052	780,314	39,676
	Spring Chinook (reared at Willamette)	022	123,375	7,776
	Spring Chinook (reared at Gnat Creek)	024	811,814	73,656
Eagle Creek NFH	Coho	019	505,400	34,855
	Winter Steelhead	020	180,170	27,433
Warm Springs NFH	Spring Chinook	066	657,468	27,171

\*Clatsop Economic Development Council (incubation and rearing of most stocks take place at ODFW hatcheries and Eagle Creek NFH; fish are acclimated at and released from CEDC net pen facilities.

**Table 6. Summary of Egg and Fry Rearing at ODFW Hatcheries for Brood Year 2003 Report Date 4/28/04**

SPECIES/ STOCK		FEMALES		EGG				FRY		ON		
HATCHERY	SPAWNED	TAKE	RECEIVE	TRANSFER	SHIP	SOLD	LOSS	LOSS	RELEASE	HAND	PONDED	
ATLANTIC SALMON												
123	WIZARD FALLS	10	7,500	0	0	0	0	4,725	1,156	0	0	1,619
BROOK TROUT												
364	WIZARD FALLS	300	231,000	0	0	0	0	190,872	0	0	0	40,128
BROWN TROUT												
068	KLAMATH	48	139,690	0	0	0	0	8,064	9,481	0	0	122,145
COHO												
011	SANDY	540	1,379,252	0	0	0	0	143,452	38,876	0	72980	1,123,944
013	BIG CREEK	278	829,371	0	5,000	8,000	0	224,371	36,480	0	0	555,520
014	BONNEVILLE	2,856	8,319,280	0	8,126,080	0	0	193,200	0	0	0	0
014	CASCADE	0	0	7,403,680	160,000	0	0	2,951,830	193,140	0	0	4,098,710
014	OXBOW HERMAN	0	0	882,400	0	0	0	173,989	86,251	0	0	622,160
018	BUTTE FALLS	0	0	56,165	0	0	0	0	1,040	0	0	55,125
018	ROCK CREEK	48	110,980	0	106,302	0	0	4,678	0	0	0	0
032	NEHALEM	107	323,568	0	0	0	0	171,168	3,661	0	0	148,739
033	SALMON RIVER	125	390,988	0	20,000	0	0	30,450	49,727	0	0	290,811
034	NEHALEM	0	0	160,000	0	0	0	8,198	6,639	0	0	145,163
034	TRASK	81	247,260	0	160,000	0	0	85,401	0	0	1,859	0
037	BANDON	0	0	300,352	237,750	0	0	62,602	0	0	0	0
037	COLE RIVERS	0	0	137,413	0	0	0	0	25,650	0	0	111,763
044	BANDON	71	226,232	0	128,477	0	0	97,380	375	0	0	0
044	BUTTE FALLS	0	0	55,011	0	0	0	0	7,307	0	0	47,704
052	COLE RIVERS	153	410,898	0	0	0	0	22,310	90,852	0	0	297,736
055	BUTTE FALLS	0	0	89,459	0	0	0	0	2,023	0	0	87,436
055	ROCK CREEK	177	455,000	0	308,220	80,055	0	38,966	391	27,368	0	0
508	CASCADE	0	0	686,640	0	0	0	0	102,620	0	0	584,020
509	BUTTE FALLS	0	0	14,280	0	0	0	0	229	0	0	14,051
509	ROCK CREEK	116	288,252	0	251,475	0	0	14,387	9,869	12,521	0	0
SPECIES TOTAL		4,481	12,754,849	9,785,400	9,374,827	88,055	0	4,125,002	649,512	41,889	5,102	8,255,863

**Table 6. Summary of Egg and Fry Rearing at ODFW Hatcheries for Brood Year 2003**

**Report Date 4/28/04**

SPECIES/ STOCK	HATCHERY	FEMALES				SHIP	SOLD	EGG LOSS	FRY		ON	
		SPAWNED	TAKE	RECEIVE	TRANSFER				LOSS	RELEASE	HAND	PONDED
CUTTHROAT												
119	FALL RIVER	305	178,740	0	74,142	0	0	104,598	0	0	0	0
119	LEABURG	413	209,836	0	0	145,492	0	64,344	0	0	0	0
119	MARION FORKS	0	0	80,028	0	0	0	3,200	6,400	0	0	70,428
119	OAK SPRINGS	0	0	145,492	0	0	0	0	6,666	0	0	138,826
302	KLAMATH	0	0	68,580	0	0	0	0	20,262	0	0	48,318
SPECIES TOTAL		718	388,576	294,100	74,142	145,492	0	172,142	33,328	0	0	257,572
FALL CHINOOK												
013	BIG CREEK	1,221	6,761,279	0	20,000	60,000	0	589,793	114,934	0	0	5,976,552
018	ROCK CREEK	110	474,996	0	388,749	0	0	45,387	0	30,280	10,580	0
034	TRASK	149	706,133	0	0	279,600	0	190,533	6636	0	0	229,639
035	ELK RIVER	531	682,990	0	100	34,645	0	139,073	14,225	156,733	0	338,214
036	SALMON RIVER	64	321,204	0	0	0	0	29,000	26,882	0	0	265,322
037	BANDON	753	4,190,720	0	3,297,191	0	0	355,051	6,926	0	0	531,552
037	COLE RIVERS	0	0	98,586	0	0	0	0	2,844	0	0	95,742
044	BANDON	51	254,543	0	240,186	0	0	14,357	0	0	0	0
044	BUTTE FALLS	0	0	110,051	0	0	0	0	1,183	0	0	108,868
045	UMATILLA	0	0	670,000	0	0	0	29,400	17,474	0	0	623,126
047	CEDAR CREEK	36	166,737	0	51,764	0	0	6,767	1,628	0	0	106,578
052	BIG CREEK	1	4,229	1,138,306	226,834	0	0	176,353	18,357	0	0	720,991
052	KLASKANINE	331	1,138,306	0	1,138,306	0	0	0	0	0	0	0
091	BONNEVILLE	0	0	562,058	0	0	0	0	4,977	0	0	557,081
091	UMATILLA	170	681,594	0	0	562,058	0	119,536	0	0	0	0
095	BONNEVILLE	2,453	10,105,803	0	0	0	0	1,538,710	159,584	0	0	8,407,509
096	ELK RIVER	139	227,653	0	0	0	0	29,303	37,092	0	0	161,258
146	SALMON RIVER	36	167,677	0	0	0	0	24,439	2,019	0	0	141,219
SPECIES TOTAL		6,045	25,874,864	2,579,001	5,363,130	936,303	0	3,278,456	408,057	173,123	279,198	18,024,598
KOKANEE												
067	WIZARD FALLS	1,970	1,386,024	0	0	105,000	0	374,744	52,000	0	164,280	690,000
069	WIZARD FALLS	60	50,020	0	0	0	0	2,500	0	0	0	47,520
SPECIES TOTAL		2,030	1,436,044	0	0	105,000	0	377,244	52,000	0	164,280	737,520

**Table 6. Summary of Egg and Fry Rearing at ODFW Hatcheries for Brood Year 2003**

**Report Date 4/28/04**

SPECIES/ STOCK		FEMALES				EGG			FRY		ON	
HATCHERY	SPAWNED	TAKE	RECEIVE	TRANSFER	SHIP	SOLD	LOSS	LOSS	RELEASE	HAND	PONDED	
RAINBOW TROUT												
053	KLAMATH	0	0	1,374,732	0	0	0	106,725	0	0	1,268,007	
053	OAK SPRINGS	1,475	6,383,953	0	3,331,312	0	2,204,131	36,974	0	3,998	807,538	
053	WIZARD FALLS	0	0	1,879,501	0	0	0	292,174	0	0	1,587,327	
066	OAK SPRINGS	95	480,668	0	200	0	331,788	12,546	0	0	136,134	
072	ALSEA	0	0	430,000	0	0	0	0	0	430,000	0	
072	COLE RIVERS	0	0	480,000	0	0	0	20,253	0	0	459,747	
072	FALL RIVER	0	0	215,000	1,050	0	0	5,700	0	0	208,250	
072	KLAMATH	0	0	300,000	0	0	0	4,653	0	0	295,347	
072	LEABURG	0	0	50,000	0	0	0	500	0	0	49,500	
072	NEHALEM	0	0	140,000	0	500	0	2,635	0	0	136,865	
072	OAK SPRINGS	0	0	230,000	0	0	0	3,000	0	38,500	188,500	
072	ROARING RVER	1,312	3,250,640	0	836,000	0	113,000	2,103,128	6,335	0	192,177	
072	WILLAMETTE	0	0	820,000	0	0	0	102,838	0	0	717,162	
072	WIZARD FALLS	0	0	310,000	0	0	0	2,000	0	0	308,000	
127	FALL RIVER	94	393,984	0	0	0	127,872	26,464	0	0	239,648	
127W	FALL RIVER	70	314,280	0	314,280	0	0	0	0	0	0	
127W	KLAMATH	0	0	314,280	0	0	69,660	7,426	0	0	237,194	
153	OAK SPRINGS	81	85,544	0	0	0	14,641	3,353	0	0	67,550	
156	IRRIGON	0	0	2,384	0	0	0	72	0	0	2,312	
171	KLAMATH	0	0	69,600	0	0	0	28,370	0	0	41,230	
551W	ROCK CREEK	8	1,305	0	0	0	378	24	0	0	903	
SPECIES TOTAL		3,135	10,910,374	6,615,497	4,482,842	500	113,000	4,851,598	662,042	0	472,498	6,943,391

**Table 6. Summary of Egg and Fry Rearing at ODFW Hatcheries for Brood Year 2003**

**Report Date 4/28/04**

SPECIES/		FEMALES				EGG			FRY		ON	
STOCK	HATCHERY	SPAWNED	TAKE	RECEIVE	TRANSFER	SHIP	SOLD	LOSS	LOSS	RELEASE	HAND	PONDED
SPRING CHINOOK												
011	CLACKAMAS	70	371,556	0	345,600	0	0	48,906	0	0	0	0
011	WILLAMETTE	0	0	345,600	0	0	0	0	5,366	0	0	340,234
019	CLACKAMAS	320	1,644,152	0	1,390,500	0	0	253,652	0	0	0	0
019	OXBOW HERMAN	0	0	383,000	0	0	0	0	2,138	0	0	380,862
019	WILLAMETTE	0	0	952,500	0	0	0	0	18,521	0	0	933,979
021	MARION FORKS	309	1,510,828	0	0	370,600	0	321,728	10,400	0	0	808,100
022	GNAT CREEK	0	0	898,000	0	0	0	6,759	10,054	0	881,187	0
022	WILLAMETTE	745	3,301,092	0	907,100	0	0	394,142	71,819	0	0	1,928,031
023	MCKENZIE	510	2,406,526	0	300	0	0	913,576	68,050	0	0	1,424,600
024	SO. SANTIAM	548	2,348,400	0	1,469,900	217,100	0	661,400	0	0	0	0
024	WILLAMETTE	0	0	1,366,100	0	0	0	0	16,262	0	0	1,349,838
029	LOOKINGGLASS	98	497,969	0	438,050	0	0	59,919	0	0	0	0
029	OXBOW HERMAN	0	0	438,050	0	0	0	0	4,555	0	0	433,495
034	TRASK	148	640,685	0	0	125,270	0	207,511	27,212	0	0	280,692
047	CEDAR CREEK	50	225,649	0	64,920	0	0	24,575	11,162	0	0	124,992
052	COLE RIVERS	773	3,033,464	0	8,750	0	0	372,267	95,656	0	0	2,556,791
055	ROCK CREEK	7	28,557	549,633	0	0	0	98,428	14,919	0	0	464,843
055	SODA SPRINGS	142	549,633	0	549,633	0	0	0	0	0	0	0
066	ROUND BUTTE	180	670,003	0	0	0	0	75,461	16,167	0	0	578,375
080F	BONNEVILLE	1	1,548	0	1,548	0	0	0	0	0	0	0
080F	IRRIGON	0	0	1,133	0	0	0	0	19	0	0	1,114
080F	OXBOW HERMAN	0	0	1,548	1,133	0	0	415	0	0	0	0
080W	LOOKINGGLASS	23	120,703	0	0	0	0	16,609	0	0	0	104,094
091	UMATILLA	240	1,051,246	0	0	221,141	0	196,029	16,269	0	0	617,807
200F	BONNEVILLE	130	196,043	0	196,043	0	0	0	0	0	0	0
200F	IRRIGON	0	0	114,857	0	0	0	2,886	3,974	0	0	107,997
200F	OXBOW HERMAN	0	0	196,043	114,857	0	0	77,945	0	0	3,241	0
200W	LOOKINGGLASS	21	106,646	0	101,811	0	0	4,835	0	0	0	0
200W	OXBOW HERMAN	0	0	101,811	0	0	0	0	1,366	0	0	100,445
201F	BONNEVILLE	160	268,986	0	268,986	0	0	0	0	0	0	0
201F	IRRIGON	0	0	185,665	450	0	0	0	3,238	0	0	181,977
201F	OXBOW HERMAN	0	0	268,986	185,665	0	0	83,321	0	0	0	0
201W	LOOKINGGLASS	28	103,916	0	0	0	0	13,388	0	0	0	90,528
SPECIES TOTAL		4,503	19,075,297	5,802,926	6,045,246	934,128	0	3,832,621	386,925	0	1,512,387	12,189,866

**Table 6. Summary of Egg and Fry Rearing at ODFW Hatcheries for Brood Year 2003**

**Report Date 4/28/04**

SPECIES/		FEMALES				EGG			FRY		ON	
STOCK	HATCHERY	SPAWNED	TAKE	RECEIVE	TRANSFER	SHIP	SOLD	LOSS	LOSS	RELEASE	HAND	PONDED
SUMMER STEELHEAD												
024	BONNEVILLE	0	0	311,275	0	0	0	0	42,138	0	0	269,137
024	OAK SPRINGS	0	0	1,063,332	0	0	0	0	16,000	0	0	90,382
024	SO. SANTIAM	519	1,977,200	0	1,401,225	0	0	575,975	0	0	0	0
029	IRRIGON	0	0	408,320	0	0	0	0	4,334	0	0	403,986
029	LITTLE SHEEP	84	467,350	0	467,350	0	0	0	0	0	0	0
029	WALLOWA	0	0	467,350	408,320	0	0	59,030	0	0	0	0
033	CEDAR CREEK	56	226,235	0	99,700	0	0	69,135	1,485	0		55,915
033	SALMON RIVER	0	0	97,020	0	0	0	0	2,121	0	0	94,899
033	TRASK	0	0	2,480	0	0	0	28	19	0	0	2,433
047	CEDAR CREEK	40	135,652	0	47,920	0	0	10,356	1,744	0	0	75,632
047	TRASK	0	0	47,520	0	0	0	858	344	0	0	46,318
050W	OAK SPRINGS	0	0	59,457	0	0	0	8,697	1,536	0	0	49,224
050W	PARKDALE	15	61,828	0	61,828	0	0	0	0	0	0	0
052	COLE RIVERS	173	482,744	0	0	0	0	49,307	128,824	0	0	304,613
055	ROCK CREEK	87	297,825	0	0	0	0	121,696	4,219	0	0	171,910
056	IRRIGON	0	0	978,730	0	0	0	0	19,566	0	0	959,164
056	WALLOWA	222	1,206,310	0	978,200	0	0	228,110	0	0	0	0
066	OAK SPRINGS	0	0	2,120	0	0	0	0	5	0	0	2,115
066	ROUND BUTTE	143	719,145	0	2,120	0	0	162,329	184,669	0	0	370,027
091	UMATILLA	30	184,827	0	0	0	0	37,517	9,445	0	0	137,865
	<b>SPECIES TOTAL</b>	<b>1,369</b>	<b>5,759,116</b>	<b>3,437,604</b>	<b>3,466,663</b>	<b>0</b>	<b>0</b>	<b>1,323,038</b>	<b>416,449</b>	<b>0</b>	<b>0</b>	<b>3,033,620</b>

**Table 6. Summary of Egg and Fry Rearing at ODFW Hatcheries for Brood Year 2003**

**Report Date 4/28/04**

SPECIES/		FEMALES				EGG			FRY		ON	
STOCK	HATCHERY	SPAWNED	TAKE	RECEIVE	TRANSFER	SHIP	SOLD	LOSS	LOSS	RELEASE	HAND	PONDED
WINTER STEELHEAD												
011	IRRIGON	0	0	115,400	0	0	0	0	1,253	0	0	114,147
011	SANDY	57	123,565	0	104,000	0	0	4,780	14,785	0	0	0
011W	OXBOW HERMAN	0	0	104,000	0	0	0	0	1,088	0	0	102,912
013	BIG CREEK	70	308,726	0	1,200	5,000	0	122,526	5,492	0	0	174,508
018	ROCK CREEK	72	231,979	0	0	0	0	50,155	7,810	0	20,079	153,935
032	NEHALEM	94	234,862	0	0	0	0	34,612	0	37,752	0	162,498
033W	ALSEA	37	117,598	0	0	0	0	12,098	2,183	0	0	103,317
037	BANDON	0	0	350,067	305,835	0	0	44,232	0	0	0	0
037	COLE RIVERS	0	0	223,856	0	0	0	0	4,167	0	0	219,689
038	WILLAMETTE	0	0	100,333	0	0	0	0	10,324	0	0	90,009
043	ALSEA	452	1,471,520	0	1,900	0	0	1,168,370	37,476	0	0	263,774
043W	ALSEA	32	92,349	0	0	0	0	10,339	2,717	0	0	79,293
044	BANDON	54	173,836	0	54,983	0	0	32,957	7,573	15,412	0	62,911
047	CEDAR CREEK	55	200,288	0	0	0	0	25,272	4,923	0	0	170,093
047W	CEDAR CREEK	23	67,082	0	0	0	0	7,296	1,226	0	3,179	55,381
050W	OAK SPRINGS	0	0	69,491	0	0	0	10,986	1,336	0	0	57,169
050W	PARKDALE	22	87,399	0	87,399	0	0	0	0	0	0	0
052	COLE RIVERS	167	424,916	0	0	0	0	28,964	88,402	0	0	307,550
062	COLE RIVERS	174	432,753	0	0	0	0	32,333	106,982	0	0	293,438
088	BANDON	0	0	43,471	38,250	0	0	5,221	0	0	0	0
088	COLE RIVERS	0	0	34,480	0	0	0	0	690	0	0	33,790
096	ELK RIVER	32	111,752	0	0	300	0	37,315	2,303	0	0	71,834
099	NEHALEM	74	180,868	0	0	0	0	22,118	0	87,944	0	70,806
121W	TRASK	27	99,232	0	0	0	0	17,452	6,849	0	0	74,931
122	CLACKAMAS	50	213,787	0	126,000	0	0	28,987	1,397	0	300	57,103
122	IRRIGON	0	0	126,000	0	0	0	0	3,237	0	0	122,763
144	BANDON	30	118,416	0	0	0	0	30,294	1,411	0	0	86,711
SPECIES TOTAL		1,522	4,670,049	1,167,098	719,567	5,300	0	1,726,307	313,624	141,108	3,479	2,927,762
GRAND TOTAL		24,161	81,247,359	29,681,626	29,526,417	2,214,778	113,000	19,890,069	2,932,574	356,120	2,436,944	52,534,084





**Table 7 Adult Anadromous Fish Dispositions For Calendar Year 2003**

SPECIES/STOCK	BROOD YEAR	FACILITY	RETURNS				TRANSFERS		POND LOSS	SPAWNED		DISPOSITION									
			MALE	FEMALE	JACK	TOTAL	IN	OUT		MALE	FEMALE	RELEASE	BURY	RENDER	SOLD	PROCESS	GIVE AWAY	STREAM ENRICH	OTHER	TOTAL	
	95	2003	BONNEVILLE	11,598	8,797	1,544	21,939	0	0	1,461	2,453	2,453	0	6,868	0	14,213	0	0	0	39	21,120
	96	2003	CHETCO RIVER	111	140	28	279	0	279	0	0	0	0	0	0	0	0	0	0	0	0
	96	2003	ELK RIVER	0	0	0	0	279	0	1	108	139	0	0	0	0	0	0	198	81	279
			<b>SPECIES TOTAL</b>	<b>29,117</b>	<b>24,669</b>	<b>4,671</b>	<b>58,457</b>	<b>460</b>	<b>460</b>	<b>5,092</b>	<b>5,435</b>	<b>6,234</b>	<b>1,137</b>	<b>14,178</b>	<b>0</b>	<b>26,167</b>	<b>3,184</b>	<b>107</b>	<b>11,668</b>	<b>1,419</b>	<b>57,860</b>
<b>SPRING CHINOOK</b>																					
	11W	2003	CLACKAMAS	0	0	0	0	192	0	41	70	70	7	41	144	0	0	0	0	0	192
	11W	2003	MARMOT TRAP	710	487	44	1,241	0	192	0	0	0	1,049	0	0	0	0	0	0	0	1,049
	19	2003	CLACKAMAS	1,575	1,716	339	3,630	1,706	0	223	169	320	302	183	875	3,782	0	184	0	33	5,359
	19	2003	FARADAY TRAP	692	954	60	1,706	0	1,706	0	0	0	0	0	0	0	0	0	0	0	0
	19	2003	MARMOT TRAP	1,447	1,237	20	2,704	0	1,182	39	0	0	329	0	1,154	0	0	39	0	0	1,522
	19	2003	SANDY	110	33	68	211	1,182	0	22	0	0	105	0	112	1,145	0	31	0	0	1,393
	200W	2003	LOOKINGGLASS	0	0	0	0	49	0	14	11	21	4	46	0	0	0	0	0	0	50
	200W	2003	LOSTINE WEIR	21	22	6	49	0	49	0	0	0	0	0	0	0	0	0	0	0	0
	201W	2003	CAT.CR.WEIR	25	24	2	51	0	51	0	0	0	0	0	0	0	0	0	0	0	0
	201W	2003	LOOKINGGLASS	0	0	0	0	51	0	9	13	28	0	49	0	0	0	0	0	0	49
	21	2003	MARION FORKS	2,405	2,006	30	4,441	0	0	103	309	309	3,487	98	739	0	0	0	117	0	4,441
	22	2003	BIG CREEK	374	376	19	769	0	0	1	0	0	294	76	0	0	317	82	0	0	769
	22	2003	DEXTER PONDS	3,192	2,937	442	6,571	0	2,229	0	0	0	3,826	59	0	0	0	457	0	0	4,342
	22	2003	WILLAMETTE	-19	18	-10	-11	2,229	0	824	784	745	0	2,218	0	0	0	0	0	0	2,218
	23	2003	LEABURG DAM	648	549	15	1,212	0	0	71	56	56	1,029	0	183	0	0	0	0	0	1,212
	23	2003	MCKENZIE	3,272	2,899	89	6,260	0	0	589	443	454	3,155	0	1,520	0	0	1,585	0	0	6,260
	24	2003	SOUTH SANTIAM	3,345	2,746	112	6,203	0	0	419	405	548	4,773	294	1,003	0	0	471	223	0	6,764
	29	2003	IMNAHA PD	462	447	397	1,306	0	740	6	0	0	560	6	0	0	0	0	0	0	566
	29	2003	LOOKINGGLASS	0	0	0	0	738	0	114	97	98	367	366	0	0	0	0	0	0	733
	33	2003	SILETZ TRAP	4	1	1	6	0	0	0	0	0	6	0	0	0	0	0	0	0	6
	33W	2003	SILETZ TRAP	84	47	53	184	0	0	0	0	0	183	0	0	0	0	0	1	0	184
	34	2003	TRASK	257	224	25	506	0	0	176	144	148	0	469	0	0	0	0	0	0	469
	47	2003	CEDAR CREEK	688	585	122	1,395	0	0	24	49	50	1,240	24	0	0	0	3	186	0	1,453
	47W	2003	CEDAR CREEK	41	40	0	81	0	0	0	0	0	81	0	0	0	0	0	0	0	81
	50	2003	MID COL STLD	36	79	3	118	0	0	0	0	0	114	0	0	0	0	0	4	0	118
	504	2003	BONNEVILLE	0	1	0	1	0	0	0	0	0	1	0	0	0	0	0	0	0	1
	504	2003	MID COL STLD	1	4	10	15	0	0	0	0	0	15	0	0	0	0	0	0	0	15
	50W	2003	MID COL STLD	34	28	13	75	0	0	0	0	0	74	0	0	0	0	0	1	0	75
	52	2003	COLE RIVERS	6,997	6,956	1,800	15,753	0	0	1,098	385	773	3,264	4,817	0	8,226	0	200	0	20	16,527
	55	2003	ROCK CREEK	75	60	68	203	21	0	0	15	7	0	22	0	0	0	202	0	0	224
	55	2003	SODA SPRINGS	172	199	2	373	0	21	69	130	142	0	173	0	0	0	0	128	51	352
	66	2003	MID COL STLD	64	163	20	247	0	0	0	0	0	243	0	0	0	0	0	4	0	247
	66	2003	ROUND BUTTE	1,229	2,246	26	3,501	0	0	45	158	180	69	458	0	0	0	3,005	0	0	3,532
	80W	2003	GRANDE RONDE WEIR	35	36	1	72	0	72	0	0	0	0	0	0	0	0	0	0	0	0
	80W	2003	LOOKINGGLASS	0	0	0	0	72	0	39	10	23	0	70	0	0	0	0	0	0	70
	81	2003	LOOKINGGLASS	43	33	0	76	0	0	0	0	0	0	0	0	0	0	76	0	0	76
			<b>SPECIES TOTAL</b>	<b>28,019</b>	<b>27,153</b>	<b>3,777</b>	<b>58,949</b>	<b>6,240</b>	<b>6,242</b>	<b>3,926</b>	<b>3,248</b>	<b>3,972</b>	<b>24,577</b>	<b>9,469</b>	<b>5,730</b>	<b>13,153</b>	<b>317</b>	<b>6,335</b>	<b>664</b>	<b>104</b>	<b>60,349</b>

**Table 7 Adult Anadromous Fish Dispositions For Calendar Year 2003**

SPECIES/STOCK	BROOD YEAR	FACILITY	RETURNS				TRANSFERS		POND LOSS	SPAWNED		DISPOSITION									
			MALE	FEMALE	JACK	TOTAL	IN	OUT		MALE	FEMALE	RELEASE	BURY	RENDER	SOLD	PROCESS	GIVE AWAY	STREAM ENRICH	OTHER	TOTAL	
SUMMER STEELHEAD																					
	23	2003	MCKENZIE	0	0	0	0	0	0	0	0	0	0	0	0	0	0	0	0	0	0
	24	2002	SANDY	13	3	0	16	0	0	0	0	0	16	0	0	0	0	0	0	0	16
	24	2003	CLACKAMAS	142	207	0	349	0	0	0	0	0	7	417	0	0	0	0	0	1	425
	24	2003	MARMOT TRAP	21	27	0	48	0	12	0	0	0	16	0	0	0	0	20	0	0	36
	24	2003	MID COL STLD	90	45	0	135	0	0	0	0	0	133	0	0	0	0	0	2	0	135
	24	2003	SANDY	379	408	0	787	12	0	0	0	0	635	0	0	0	0	164	0	0	799
	24	2003	SOUTH SANTIAM	1	2	0	3	0	0	405	277	484	0	309	584	0	0	0	529	0	1,422
	24	2004	CLACKAMAS	349	415	0	764	0	0	0	0	0	949	2	0	0	0	47	0	0	998
	24	2004	DEXTER PONDS	251	380	0	631	0	0	0	0	0	631	0	0	0	0	0	0	0	631
	24	2004	LEABURG	172	169	0	341	0	0	0	0	0	341	0	0	0	0	0	0	0	341
	24	2004	MARION FORKS	3,289	1,402	0	4,691	0	300	0	0	0	3,616	0	0	0	0	775	0	0	4,391
	24	2004	MID COL STLD	454	766	0	1,220	0	0	0	0	0	1,191	0	0	0	0	0	28	0	1,219
	24	2004	SOUTH SANTIAM	2,189	2,290	0	4,479	300	0	50	72	72	4,526	31	172	0	0	3	0	4	4,736
	24W	2003	MARMOT TRAP	103	127	0	230	0	0	0	0	0	230	0	0	0	0	0	0	0	230
	29	2003	LITTLE SHEEP	871	1,132	0	2,003	0	0	8	90	84	1,816	195	0	0	0	0	0	0	2,011
	33	2003	CEDAR CREEK	0	0	0	0	0	0	0	56	56	28	0	0	0	0	0	114	0	142
	33	2003	SILETZ TRAP	35	46	0	81	0	0	0	0	0	80	0	0	0	0	0	1	0	81
	33	2004	CEDAR CREEK	0	0	0	0	142	0	5	0	0	0	5	0	0	0	0	0	0	5
	33	2004	SALMON RIVER	6	7	0	13	0	0	0	0	0	13	0	0	0	0	0	0	0	13
	33	2004	SILETZ TRAP	2,005	2,040	146	4,191	0	142	1	0	0	1,299	0	0	0	0	1,874	885	0	4,058
	33W	2003	SILETZ TRAP	0	1	0	1	0	0	0	0	0	1	0	0	0	0	0	0	0	1
	33W	2004	SILETZ TRAP	438	531	46	1,015	0	0	0	0	0	1,015	0	0	0	0	0	0	0	1,015
	47	2002	TRASK	1	2	0	3	0	0	0	0	0	3	0	0	0	0	0	0	0	3
	47	2002	TUFFY CREEK	4	4	0	8	0	0	0	0	0	10	0	0	0	0	0	0	0	10
	47	2003	CEDAR CREEK	3	2	0	5	0	0	6	40	40	69	0	0	0	0	0	99	0	168
	47	2004	CEDAR CREEK	1,283	1,244	3	2,530	0	0	2	0	0	2,790	2	0	0	0	272	0	0	3,064
	47	2004	TRASK	2	0	0	2	0	0	0	0	0	2	0	0	0	0	0	0	0	2
	47	2004	TUFFY CREEK	19	15	0	34	0	0	0	0	0	34	0	0	0	0	0	0	0	34
	50	2003	MID COL STLD	71	86	0	157	0	0	0	0	0	154	1	0	0	0	0	0	0	157
	50	2004	MID COL STLD	271	300	0	571	0	0	0	0	0	562	0	0	0	0	0	9	0	571
	504	2003	BONNEVILLE	16	2	0	18	0	0	0	0	0	18	0	0	0	0	0	0	0	18
	504	2003	MID COL STLD	46	26	0	72	0	0	0	0	0	68	4	0	0	0	0	0	0	72
	504	2004	MID COL STLD	26	33	0	59	0	0	0	0	0	57	0	0	0	0	0	2	0	59
	50W	2003	MID COL STLD	90	73	0	163	0	16	1	0	0	145	1	0	0	0	0	1	0	147
	50W	2003	PARKDALE	0	0	0	0	16	0	5	6	1	45	19	0	0	0	0	0	0	64
	50W	2004	MID COL STLD	73	162	0	235	0	40	0	0	0	193	0	0	0	0	0	2	0	195
	50W	2004	PARKDALE	0	0	0	0	40	0	7	0	0	0	0	0	0	0	0	0	5	5
	52	2003	COLE RIVERS	789	1,418	0	2,207	0	0	425	47	31	7,822	487	0	0	0	0	0	2	8,311
	52	2004	COLE RIVERS	2,979	3,373	0	6,352	0	0	135	0	0	3,424	135	0	0	0	0	0	0	3,559
	55	2003	ROCK CREEK	-18	21	0	3	0	0	33	62	87	0	35	0	0	0	0	151	0	186
	55	2004	ROCK CREEK	252	258	0	510	0	0	121	0	0	174	121	0	0	0	8	0	0	303

**Table 7 Adult Anadromous Fish Dispositions For Calendar Year 2003**

SPECIES/STOCK	BROOD YEAR	FACILITY	RETURNS				TRANSFERS		POND LOSS	SPAWNED		DISPOSITION									
			MALE	FEMALE	JACK	TOTAL	IN	OUT		MALE	FEMALE	RELEASE	BURY	RENDER	SOLD	PROCESS	GIVE AWAY	STREAM ENRICH	OTHER	TOTAL	
56	2003	BIG CANYON TRAP	593	916	0	1,509	0	0	0	0	0	429	568	0	0	0	567	0	0	1,564	
56	2003	WALLOWA	938	1,162	0	2,100	0	0	8	226	222	91	630	0	0	0	1,379	0	0	2,100	
56	2004	WALLOWA	57	49	0	106	0	0	0	0	0	0	0	0	0	0	0	0	0		
66	2003	ROUND BUTTE	1,178	1,874	0	3,052	0	0	199	143	143	191	1,181	0	0	0	1,883	0	0	3,255	
66	2004	ROUND BUTTE	812	1,192	0	2,004	0	0	0	0	0	23	0	0	0	0	1,774	0	0	1,797	
81	2003	LOOKINGGLASS	62	103	0	165	0	0	0	0	0	165	0	0	0	0	0	0	0	165	
		SPECIES TOTAL	20,355	22,313	195	42,863	510	510	1,411	1,019	1,220	33,005	3,733	1,173	0	0	8,766	1,825	12	48,514	
<b>WINTER STEELHEAD</b>																					
11	2003	MARMOT TRAP	1	1	0	2	0	0	0	0	0	2	0	0	0	0	0	0	0	2	
11	2003	SANDY	355	205	0	560	0	0	3	58	60	502	58	0	0	0	0	0	0	560	
11	2004	SANDY	6	2	0	8	0	0	0	0	0	8	0	0	0	0	0	0	0	8	
11W	2003	MARMOT TRAP	304	332	0	636	0	87	0	0	0	549	0	0	0	0	0	0	0	549	
11W	2003	SANDY	2	3	0	5	87	0	0	82	80	92	0	0	0	0	0	0	0	92	
11W	2004	MARMOT TRAP	3	10	0	13	0	0	0	0	0	13	0	0	0	0	0	0	0	13	
121	2004	TRASK	5	4	0	9	0	0	0	0	0	9	0	0	0	0	0	0	0	9	
121W	2003	HUGHEY CR ACC. SITE	43	58	0	101	0	91	0	0	0	10	0	0	0	0	0	0	0	10	
121W	2003	TRASK	1	2	0	3	102	0	13	30	32	89	16	0	0	0	0	0	0	105	
121W	2003	TUFFY CREEK	19	6	0	25	0	11	0	0	0	14	0	0	0	0	0	0	0	14	
121W	2004	TUFFY CREEK	17	5	0	22	0	0	0	0	0	22	0	0	0	0	0	0	0	22	
122	2003	CLACKAMAS	431	409	0	840	0	0	2	68	83	1,001	21	0	0	0	0	0	5	1,027	
122W	2003	CLACKAMAS	26	18	0	44	37	0	3	32	18	78	3	0	0	0	0	0	0	81	
122W	2003	FARADAY TRAP	18	19	0	37	0	37	0	0	0	0	0	0	0	0	0	0	0	0	
13	2003	BIG CREEK	263	321	10	594	0	0	58	28	70	831	58	0	0	0	0	90	8	987	
13	2003	CLACKAMAS	14	29	0	43	0	0	0	0	0	33	1	12	0	0	0	0	0	46	
13	2003	MARMOT TRAP	10	9	0	19	0	0	0	0	0	19	0	0	0	0	0	0	0	19	
13	2003	SANDY	60	54	0	114	0	0	0	0	0	114	0	0	0	0	0	0	0	114	
13	2004	BIG CREEK	232	119	0	351	0	0	0	0	0	303	0	0	0	0	0	0	0	303	
13	2004	SANDY	2	3	0	5	0	0	0	0	0	5	0	0	0	0	0	0	0	5	
144	2003	BANDON	39	50	0	89	0	0	29	22	30	3	31	0	0	0	0	55	0	89	
15	2002	KLASKANINE	130	139	0	269	0	0	3	0	0	293	3	0	0	0	0	0	0	296	
15	2003	KLASKANINE	174	116	0	290	0	0	0	0	0	290	0	0	0	0	0	0	0	290	
15	2004	KLASKANINE	46	20	0	66	0	0	0	0	0	0	0	0	0	0	0	0	0	0	
18	2002	ROCK CREEK	5	5	0	10	0	0	0	0	0	0	0	0	0	0	0	0	0	0	
18	2003	ROCK CREEK	68	120	0	188	0	0	50	59	72	0	62	0	0	0	0	126	0	188	
20	2003	CLACKAMAS	135	287	0	422	0	0	0	0	0	501	10	0	0	0	0	0	0	511	
21	2003	MARION FORKS	85	89	0	174	0	0	0	0	0	174	0	0	0	0	0	0	0	174	
24	2003	SOUTH SANTIAM	357	508	0	865	0	0	3	0	0	862	3	0	0	0	0	0	0	865	
24	2004	SOUTH SANTIAM	5	9	0	14	0	0	0	0	0	14	0	0	0	0	0	0	0	14	
32	2003	NEHALEM	217	292	13	522	0	0	19	94	94	556	19	0	0	0	0	0	0	575	
32	2004	NEHALEM	299	244	0	543	0	0	3	38	39	443	5	0	0	0	0	0	0	448	
33	2003	SILETZ TRAP	106	199	13	318	0	91	0	0	0	223	0	0	0	0	0	4	0	227	



**Table 7 Adult Anadromous Fish Dispositions For Calendar Year 2003**

SPECIES/STOCK	BROOD YEAR	FACILITY	RETURNS				TRANSFERS		POND LOSS	SPAWNED		DISPOSITION									
			MALE	FEMALE	JACK	TOTAL	IN	OUT		MALE	FEMALE	RELEASE	BURY	RENDER	SOLD	PROCESS	GIVE AWAY	STREAM ENRICH	OTHER	TOTAL	
	99	2003	NEHALEM	197	190	9	396	0	0	21	74	74	402	21	0	0	0	0	0	0	423
	99	2004	NEHALEM	136	112	0	248	0	0	2	1	18	161	6	0	0	0	0	0	0	167
			<b>SPECIES TOTAL</b>	<b>10,148</b>	<b>11,542</b>	<b>96</b>	<b>21,786</b>	<b>530</b>	<b>621</b>	<b>1,206</b>	<b>2,111</b>	<b>2,361</b>	<b>19,473</b>	<b>1,312</b>	<b>12</b>	<b>0</b>	<b>0</b>	<b>58</b>	<b>1,461</b>	<b>214</b>	<b>22,530</b>

\*This table was updated on 2/28/2019 to correct discrepancies in the original table.

**Table 8 Wild Adult Fish Collection and Disposition for 2003**

Species	Stock	Collection Site	Number Collected	Number Transferred		Spawned	Live Spawned	Released		Carcass Disposition		
				In	Out			Above Barrier	Below Barrier	Stream Enrichment	Other	
<b>BULL TROUT</b>												
	029	Imnaha Pond	16	0	0	0	0	16	0	0	0	0
	081	Lookingglass	29	0	0	0	0	29	0	0	0	0
		<b>SPECIES TOTAL</b>	<b>45</b>	<b>0</b>	<b>0</b>	<b>0</b>	<b>0</b>	<b>45</b>	<b>0</b>	<b>0</b>	<b>0</b>	<b>0</b>
<b>CHUM SALMON</b>												
	013	Big Creek	27	0	0	0	0	27	0	0	0	0
	504	Bonneville <sup>1</sup>	1	0	0	0	0	1	0	0	0	0
		<b>SPECIES TOTAL</b>	<b>28</b>	<b>0</b>	<b>0</b>	<b>0</b>	<b>0</b>	<b>28</b>	<b>0</b>	<b>0</b>	<b>0</b>	<b>0</b>
<b>COHO SALMON</b>												
	011W	Sandy <sup>2</sup>	184	0	0	0	0	184	0	0	0	0
	011W	Marmot Trap	1198	0	0	0	0	1189	0	0	0	0
	013	Big Creek	331	0	0	0	0	331	0	0	0	0
	015	Klaskanine	80	0	0	0	0	80	0	0	0	0
	018	Rock Creek	95	0	0	95	0	0	0	0	0	95
	032	Nehalem	228	0	0	0	0	228	0	0	0	0
	033	Salmon River	148	0	0	0	0	148	0	0	0	0
	033W	Siletz Trap	34	0	0	0	0	15	19	0	0	0
	034	Trask	132	0	0	0	0	0	132	0	0	0
	034W	Trask	1	0	0	0	0	0	1	0	0	0
	043	Alsea	42	0	0	0	0	42	0	0	0	0
	044	Bandon	116	0	0	90	0	0	0	0	0	90
	047W	Cedar Creek	26	0	0	0	0	26	0	0	0	0
	052	Cole Rivers	824	0	0	306	0	0	535	160	129	0
	055	Rock Creek	143	0	0	143	0	0	0	0	0	0
	121W	Tuffy Creek	15	0	0	0	0 15?	0	0	0	0	0
	504	Bonneville <sup>1</sup>	668	0	0	0	0	668	0	0	0	0
	509	Rock Creek	255	0	0	255	0	0	0	24	231	0
		<b>SPECIES TOTAL</b>	<b>4520</b>	<b>0</b>	<b>0</b>	<b>889</b>	<b>0</b>	<b>2911</b>	<b>687</b>	<b>184</b>	<b>545</b>	<b>0</b>

Table 8 Wild Adult Fish Collection and Disposition for 2003

Species	Stock	Collection Site	Number Collected	Number Transferred		Spawned	Live Spawned	Released		Carcass Disposition	
				In	Out			Above Barrier	Below Barrier	Stream Enrichment	Other
<b>FALL CHINOOK</b>											
018		Rock Creek	215	0	0	215	0	0	0	0	215
033W		Siletz Trap	31	0	0	0	0	31	0	0	0
034		Trask	237?	0	0	171?	0	0	0	122?	49?
036		Salmon River	41	0	0	30	0	11	0	0	30
044		Bandon	120	0	0	99	0	0	0	0	21
052		Cole Rivers	589	0	0	0	0	0	0	0	589
066		Round Butte	58	0	0	0	0	0	58	0	0
121W		Tuffy Creek	18	0	0	0	0	0	18	0	0
146		Yaquina R./Big Elk Cr. <sup>3</sup>	65	0	65	0	0	0	0	0	0
146		Salmon River	0	65	0	51	0	0	0	0	65
<b>SPECIES TOTAL</b>			<b>1137</b>	<b>65</b>	<b>65</b>	<b>395</b>	<b>0</b>	<b>42</b>	<b>76</b>	<b>95</b>	<b>825</b>
<b>SPRING CHINOOK</b>											
011W		Marmot Trap	1241	0	192	0	0	1049	0	0	0
011W		Clackamas	0	192	0	140	0	7			182
021		Minto Trap	409	0	0	19	0	110	268	0	31
023		McKenzie <sup>4</sup>	172					33			
024		South Santiam	451	0	0	0	44	0	407	0	44
029		Imnaha River	405	0	69	0	0	336	0	0	0
029		Lookingglass	0	69	0	50	0	0	0	0	69
033W		Siletz Trap	181	0	0	0	0	180	0	0	1
047W		Cedar Creek	81	0	0	0	0	81	0	0	0
052		Cole Rivers	1352	0	0	474	0	0	0	0	1352
055		Soda Springs	353	0	0	353	0	0	0	0	353
066		Round Butte	7	0	0	0	0	0	7	0	0
080W		Grande Ronde Weir	146	0	73	0	0	73	0	0	0
080W		Lookingglass	32	73	0	38	0	0	0	0	105
081		Lookingglass	29	0	0	0	0	0	0	0	29
200W		Lostine Weir	238	0	45	0	0	193	0	0	0
200W		Lookingglass	0	45	0	34	0	0	0	0	45
201W		Catherine Creek Weir	254	0	53	0	0	201	0	0	0
201W		Lookingglass	0	53	0	43	0	0	0	0	53
504		Bonneville <sup>1</sup>	1	0	0	0	0	1	0	0	0
<b>SPECIES TOTAL</b>			<b>5352</b>	<b>432</b>	<b>432</b>	<b>1151</b>	<b>44</b>	<b>2264</b>	<b>682</b>	<b>0</b>	<b>2264</b>

Table 8 Wild Adult Fish Collection and Disposition for 2003

Species	Stock	Collection Site	Number Collected	Number Transferred		Spawned	Live Spawned	Released		Carcass Disposition		
				In	Out			Above Barrier	Below Barrier	Stream Enrichment	Other	
<b>SUMMER STEELHEAD</b>												
	024W	Marmot Trap	230	0	0	0	0	230	0	0	0	0
	024	South Santiam	4	0	0	2	0	0	0	0	0	4
	029	Little Sheep Creek	99	0	0	6	3	93	0	0	0	6
	033W	Siletz Trap	937	0	0	0	0	937	0	0	0	0
	050W	Hood River <sup>5</sup>	102	0	21	0	0	80	0	0	0	1
	050W	Parkdale	0	56	0	0	34	45	0	0	0	17
	052	Cole Rivers	297	0	0	0	228	0	168	0	0	129
	055	Rock Creek	321	0	0	321	0	0	0	0	42	279
	056	Big Canyon	140	0	0	0	0	140	0	0	0	0
	056	Wallowa	10	0	0	0	0	10	0	0	0	0
	066	Round Butte	57	0	0	0	0	0	57	0	0	0
	081	Lookingglass	152	0	0	0	0	0	0	0	0	0
	504	Bonneville <sup>1</sup>	18	0	0	0	0	18	0	0	0	0
	<b>SPECIES TOTAL</b>		2367	56	21	329	265	1553	225	42	436	
<b>WINTER STEELHEAD</b>												
	011W	Marmot Trap	649	0	87	0	0	562	0	0	0	0
	011W	Sandy	5	87	0	0	81	4	88	0	0	0
	013	Big Creek	97	0	0	0	0	97	0	0	0	0
	018	Rock Creek	36	0	0	36	0	0	0	31	5	
	021	Minto Trap	173	0	0	0	0	173	0	0	0	0
	024	South Santiam	854	0	0	0	0	854	0	0	0	0
	033W	Siletz Trap	237	0	95	0	0	0	0	0	0	1
	033W	Alsea	0	95	0	0	72	0	70	0	0	2
	034	Trask	23	0	0	0	0	0	23	0	0	0
	043W	Alsea	102	29	0	0	48	67	63	7	3	
	043W	Fall Creek	66	0	29	0	0	37	0	0	0	0
	044	Bandon	20	0	0	0	10	20	0	0	0	0
	047W	Cedar Creek	14	50	0	0	42	9	52	0	3	
	047W	Nestucca River <sup>5</sup>	50	0	50	0	0	0	0	0	0	0
	050W	Hood River <sup>5</sup>	64	0	64	0	0	0	0	0	0	0
	050W	Parkdale	0	64	0	2	39	47	0	0	0	17
	052	Cole Rivers	204	0	0	0	128	0	154	0	0	50
	062	Cole Rivers	222	0	0	0	117	0	163	0	0	59
	121W	Trask	4	95	0	49	10	0	88	0	0	16
	121W	Tuffy Creek	14	0	14	0	0	0	0	0	0	0
	122W	Clackamas	44	37	0	0	25	78	0	0	0	3
	144	Bandon	15	0	0	0	1	1	0	0	0	14
	<b>SPECIES TOTAL</b>		2893	457	339	87	573	1949	701	38	173	

<sup>1</sup>Released above Bonneville Dam

<sup>4</sup>Released above Leaburg Dam

<sup>2</sup>Released above Marmot Dam

<sup>5</sup>Adults captured by angling

<sup>3</sup>Adults collected by gillnetting

## Table 9. Egg and Carcass Sales Report 2003

### Non-viable Egg Sales Report, 2003

Name of Hatchery	Name of Buyer	Egg Sold (lb)	Total Value
Clackamas	Amerman's Salmon Egg	2,174	\$7,537.90
Clackamas	The Guide Shop	70	\$38.50
Cole M. Rivers	The Guide Shop	2,341	\$7,140.05
Cole M. Rivers	Pat's Hand Tied Flies	1,250	\$5,200.00
Big Creek	The Guide Shop	3,508	\$6,426.60
Bonneville	The Guide Shop	8,526	\$13,334.06
Bonneville	Amerman's Salmon Egg	12,524	\$18,000.78
<b>GRAND TOTAL</b>		<b>30,393</b>	<b>\$57,677.89</b>

### Carcass Sales Report, 2003

Name of Hatchery	Name of Buyer	# of Fish Sold	Total Weight (lb)	Total Value
Clackamas	Fishhawk Fisheries Inc.	3,782	55,988	\$12,194.92
Sandy	Fishhawk Fisheries Inc.	1,145	17,669	\$6,687.42
Cole M. Rivers	American Canadian Fisheries Inc.	8,226	137,180	\$30,026.01
Big Creek	Smoki Foods Inc.	17,890	302,439	\$36,284.08
Bonneville	Smoki Foods Inc.	39,797	381,963	\$45,437.98
<b>GRAND TOTAL</b>		<b>70,840</b>	<b>895,238</b>	<b>\$130,630.41</b>

**EGG + CARCASS SALES TOTAL = \$188,308.30**

**Table 10. Hatchery Maintenance Projects Completed in 2003**

<b>JOB LOCATION</b>	<b>DESCRIPTION</b>
BANDON HATCHERY	VALVE REPLACEMENT
BANDON HATCHERY	INCUBATION ISOLATION SYSTEM
BANDON HATCHERY	CHILLER INSTALLATION
BONNEVILLE HATCHERY	ASBESTOS INVESTIGATION OF RESIDENCE
BUTTE FALLS HATCHERY	INTAKE MODIFICATIONS
BUTTE FALLS HATCHERY	REPLACE INCUBATION BUILDING HEADER PIPE
BUTTE FALLS HATCHERY	POND 11 & 12 RESTORATION
BUTTE FALLS HATCHERY	VERIFICATION OF PREVIOUS ELECTRICAL INSPECTION
BUTTE FALLS HATCHERY	SEPTIC SYSTEM REPAIRS
CASCADE HATCHERY	ASBESTOS INVESTIGATION OF HATCHERY OFFICE AND RESIDENCE
CASCADE HATCHERY	INCUBATORS
CEDAR CREEK HATCHERY	CATWALK/CHANNEL
CEDAR CREEK HATCHERY	PUMP DISCONNECT REPAIR & INSPECTION
CLACKAMAS HATCHERY	PUMP REPAIRS
CLACKAMAS HATCHERY	CHEMICAL STORAGE BUILDING
GNAT CREEK HATCHERY	ALARM SYSTEM
KLAMATH HATCHERY	VERIFICATION OF PREVIOUS ELECTRICAL INSPECTION
LEABURG HATCHERY	FLUME EXPANSION JOINT REPAIR
LEABURG HATCHERY	POND EXPANSION JOINT REPAIR
MARION FORKS HATCHERY	3-PHASE POWER CONVERSION
NORTH NEHALEM HATCHERY	INTAKE PUMP REPAIR
NORTH NEHALEM HATCHERY	RELEASING PIPELINE INSTALLATION
OAK SPRINGS HATCHERY	NEW HANDRAIL FOR UPPER PONDS
OAK SPRINGS HATCHERY	DRAINFIELD
OXBOW HATCHERY	VERIFICATION OF PREVIOUS ELECTRICAL INSPECTION
OXBOW HATCHERY	INVESTIGATION OF NEW PRODUCTION WELL FOR SOCKEYE
ROCK CREEK HATCHERY	ALARM SYSTEM
ROCK CREEK HATCHERY	ROCK CREEK FISH PASSAGE
SALMON RIVER HATCHERY	PUMP REPAIRS
SALMON RIVER HATCHERY	DICONNECT SWITCH FOR GASOLINE PUMP
SANDY HATCHERY	SAND & GRAVEL REMOVAL
TRASK HATCHERY	SPAWNING BUILDING ABATEMENT LINE
TRASK HATCHERY	VERIFICATION OF PREVIOUS ELECTRICAL INSPECTION
WALLOWA HATCHERY	VERIFICATION OF PREVIOUS ELECTRICAL INSPECTION

**Table 11. Frequency of Pathogen Diagnosis at ODFW Hatcheries in 2003**

Pathogen	Fish Species					
	Summer Steelhead	Winter Steelhead	Rainbow	Spring Chinook	Fall Chinook	Coho
<i>Ichthyobodo</i>	3	9	26	18	5	4
Trichodinids	23	38	54	2	5	16
<i>Gyrodactylus</i>	23	29	43	0	2	0
Ich	19	32	8	40	4	0
Gill Amoeba	0	16	3	4	6	3
BKD <sup>1</sup>	1	0	6	42	18	21
Furunculosis	5	9	0	15	1	1
Coldwater	28	51	51	26	10	14
Columnaris	6	6	1	9	1	0
BGD <sup>2</sup>	0	1	5	0	4	2
Gram negative Septicemia <sup>3</sup>	21	34	29	84	15	15
IHNV <sup>4</sup>						
Adult	25	14	5	10	1	0
Juvenile	0	0	0	1	0	0
Fingerling	4	0	2	2	0	0
Fry	2	0	2	1	0	0
EIBS <sup>5</sup>	0	0	0	0	1	0
Fungus	6	9	33	80	3	2
<i>Myxobolus cerebralis</i>	1	0	0	0	0	0
<i>Ceratomyxa</i>	4	1	1	2	0	0
<i>Mxyobolus</i> spp	4	4	15	1	0	1

<sup>1</sup>Bacterial Kidney Disease

<sup>2</sup>Bacterial Gill Disease

<sup>3</sup>infection by various *Aeromonas* and *Pseudomonas* bacteria

<sup>4</sup>Infectious Hematopoietic Necrosis Virus

<sup>5</sup>Erythrocytic Inclusion Body Syndrome

**Table 12. Marking and Tagging Summary for Calendar Year 2003**

HATCHERY	SPECIES	STOCK/BY	MARK #*1000 APPLIED	RELEASE LOCATION	RELEASE DATE	TAG CODE	NUMBER MARKED
<b>Bandon</b>	Fall Chinook	3702	30 AdCWT	Morgan Cr.	05/30/03	09-38-10	32,109
	Fall Chinook	3702	30 AdCWT	Noble Cr.	06/06/03	09-38-11	32,184
	TOTAL		60				<b>64,293</b>
<b>Big Creek</b>	Fall Chinook	1302	200 AdCWT	Big Cr.	04/25/03	09-37-51	222,314
	Fall Chinook	5202	25 AdLVCWT	Klaskanine R.	08/15/03	09-38-17	27,622
	Fall Chinook	5202	25 AdLVCWT	Klaskanine R.	09/15/03	09-38-18	27,612
	Fall Chinook	5202	25 AdLVCWT	Youngs Bay	09/15/03	09-38-19	28,077
	Fall Chinook	5202	1025 LV only	Klask. R./YB	Various	None	1,031,236
	Coho	1302	25 AdCWT	Big Cr.	04/30/04	09-37-24	27,207
	Coho	1302	25 AdCWT	Big Cr.	05/31/04	09-37-25	27,095
	Coho	1302	485 Ad only	Big Cr.	Various	None	465,116
	Winter Steelhead	1303	160 Ad only	Gnat/Klas/Big	Various	None	164,621
TOTAL		1995				<b>2,020,900</b>	
<b>Bonneville</b>	Fall Chinook	9502	200 AdCWT	Ringold Pond	05/15/03	09-37-52	217,728
	Fall Chinook	9502	50 AdCWT	Tanner Cr.	06/01/03	07-09-48	56,759
	Fall Chinook	9502	50 AdCWT	Tanner Cr.	08/01/03	07-09-49	56,471
	Fall Chinook	9502	25 AdCWT	Umatilla R.	02/15/04	09-39-09	27,156
	Fall Chinook	9502	215 TB	Umatilla R.	02/15/04	TB	211,358
	Fall Chinook	9502	25 AdCWT	Umatilla R.	03/15/04	09-39-10	26,373
	Fall Chinook	9502	215 TB	Umatilla R.	03/15/04	TB	211,359
	Summer Steelhead	2403	215 Ad only	Various	Various	None	231,700
	Winter Steelhead	1103	60 Ad only	Sandy R.	05/15/05	None	66,360
	Coho	1402	25 AdCWT	Tanner Cr.	05/02/04	09-37-31	27,502
TOTAL		1080				<b>1,132,766</b>	
<b>Butte Falls</b>	Fall Chinook	4402	25 AdCWT	7-Mile Cr.	08/25/03	09-38-46	26,822
	Coho	1802	35 Ad only	S. Umpqua R.	04/07/04	None	34,006
	Coho	4402	37.5 Ad only	7-Mile/Bandon	04/14/04	None	29,208
	Coho	5502	37.5 Ad only	N. Umpqua R.	04/14/04	None	38,440
	Coho	5502	10 AdLM	N. Umpqua R.	04/14/04	None	11,094
	Coho	5502	10 AdRM	N. Umpqua R.	04/14/04	None	10,982
	Coho	1802	25 AdCWT	S. Umpqua R.	04/14/04	09-19-52	27,493
	Coho	4402	12.5 AdCWT	Bandon	04/14/04	09-23-45	13,433
	Coho	5502	25 AdCWT	N. Umpqua R.	04/14/04	09-19-54	25,680
TOTAL		217.5				<b>217,158</b>	
<b>Cascade</b>	Coho	1402	25 AdCWT	Tongue Pt.	04/30/04	09-38-62	27,737
	Coho	1402	25 AdCWT	Youngs Bay	04/14/04	09-38-63	27,743
	Coho	1402	25 AdCWT	Umatilla R.	03/17/04	09-37-28	27,890
	Coho	1402	25 AdCWT	Umatilla R.	02/14/04	09-37-29	27,780
	Coho	1402	2165 Ad only	Various	Various	None	2,084,173
	Coho	1402	600 Ad only	Various	Various	None	630,739
TOTAL		2865				<b>2,826,062</b>	
<b>Cedar Creek</b>	Fall Chinook	4702	25 AdCWT	Nestucca R.	07/18/03	09-19-48	27,254
	Fall Chinook	4702	85 Ad only	Nest./Three R.	07/18/03	None	88,069
	Winter Steelhead	4703	135 AdLM	Various	04/01/04	None	138,000
	Winter Steelhead	47W03	50 AdRM	Nestucca R.	03/31/04	None	56,000
	Summer Steelhead	4703	80 AdRV	Various	04/01/04	None	90,000
TOTAL		375				<b>399,323</b>	

**Table 12. Marking and Tagging Summary for Calendar Year 2003**

HATCHERY	SPECIES	STOCK/BY	MARK #*1000 APPLIED	RELEASE LOCATION	RELEASE DATE	TAG CODE	NUMBER MARKED
<b>Cole Rivers</b>	Coho	3702	25 AdCWT	Noble Cr.	03/31/04	09-19-51	26,493
	Coho	5202	25 CWT only	Rogue R.	04/30/04	09-38-03	27,242
	Coho	5202	25 AdCWT	Rogue R.	04/30/04	09-38-05	27,293
	Coho	5202	150 Ad only	Rogue R.	04/30/04	None	152,161
	Coho	3702	90 Ad only	Noble Cr.	03/31/04	None	28,325
	Coho	3702	5 Ad only	Charleston Cr.	03/27/04	None	0
	Fall Chinook	3702	25 AdCWT	Morgan Cr.	09/14/03	09-21-10	27,618
	Spring Chinook	5202	30 AdCWT	Rogue R.	08/15/03	09-38-01	32,414
	Spring Chinook	5202	50 AdCWT	Rogue R.	09/15/03	09-37-63	55,427
	Spring Chinook	5202	30 AdCWT	Rogue R.	10/15/03	09-38-02	32,639
	Spring Chinook	5202	50 CWT only	Rogue R.	09/15/03	09-38-04	54,753
	Spring Chinook	5202	700 Ad only	Rogue R.	08/15/03	None	720,227
	Spring Chinook	5202	630 Ad only	Rogue R.	09/15/03	None	636,457
	Spring Chinook	5202	132 Ad only	Rogue R.	10/15/03	None	135,485
	Spring Chinook	5202	300 Ad only	Rogue R.	08/15/03	None	300,414
		TOTAL		2267			
<b>Elk River</b>	Fall Chinook	3502	200 AdCWT	Elk R.	09/15/03	09-38-12	224,784
	Fall Chinook	9602	25 AdCWT	Chetco R.	09/15/03	09-38-13	27,822
		TOTAL		225			<b>252,606</b>
<b>Fall River</b>	Rainbow Trout	12703	100 Ad only	Various	06/15/04	None	125,234
	Rainbow Trout	12703W	100 Ad only	Various	06/15/04	None	47,000
		TOTAL		200			<b>172,234</b>
<b>Gardiner</b>	Fall Chinook	15102	25 AdCWT	Umpqua R.	06/30/03	09-38-06	27,598
	Fall Chinook	15102	25 AdCWT	Umpqua R.	06/30/03	09-38-07	29,799
	Fall Chinook	15102	25 AdCWT	Umpqua R.	06/30/03	09-38-08	29,107
		TOTAL		100			<b>115,611</b>
<b>Gnat Creek</b>	Spring Chinook	2202	750 Ad only	TP/BS/YB	03/31/04	None	756,736
	Spring Chinook	2202	25 AdCWT	Tongue Pt.	03/31/04	09-36-61	27,565
	Spring Chinook	2202	25 AdCWT	Youngs Bay	03/31/04	09-36-62	27,834
	Spring Chinook	2202	25 AdCWT	John Day R.	03/31/04	09-36-63	27,674
	Spring Chinook	2202	25 AdCWT	Blind Slough	03/31/04	09-39-01	27,604
		TOTAL		850			<b>867,413</b>
<b>L. Herman</b>	Coho	1402	25 AdCWT	Umatilla R.	02/14/04	09-37-30	27,659
		TOTAL		25			<b>27,659</b>
<b>U. Herman</b>	Coho	1402	25 AdCWT	Tanner Cr.	06/01/04	09-37-26	27,433
	Coho	1402	25 AdCWT	Youngs Bay	04/14/04	09-37-27	28,239
		TOTAL		50			<b>55,672</b>
<b>Indian Creek</b>	Fall Chinook	6102	25 AdCWT	Rogue R.	09/01/03	09-38-20	28,951
		TOTAL		25			<b>28,951</b>
<b>Irrigon</b>	Summer Steelhead	2903	25 AdLVCWT	L. Sheep Cr.	04/15/04	09-39-12	26,794
	Summer Steelhead	2903	25 AdLVCWT	L. Sheep Cr.	05/15/04	09-39-13	26,467
	Summer Steelhead	2903	50 AdLVCWT	B. Sheep Cr.	04/15/04	09-39-11	50,264
	Summer Steelhead	2903	50 TB	L. Sheep Cr.	04/15/04	TB	50,408
	Summer Steelhead	5603	25 AdLVCWT	Wallowa R.	04/10/04	09-39-14	26,775
	Summer Steelhead	5603	25 AdLVCWT	Wallowa R.	05/15/04	09-39-15	26,772
	Summer Steelhead	5603	25 AdLVCWT	Big Canyon	04/15/04	09-39-16	26,702
	Summer Steelhead	5603	25 AdLVCWT	Big Canyon	05/20/04	09-39-17	26,604
		TOTAL		250			<b>260,786</b>

**Table 12. Marking and Tagging Summary for Calendar Year 2003**

HATCHERY	SPECIES	STOCK/BY	MARK #*1000 APPLIED	RELEASE LOCATION	RELEASE DATE	TAG CODE	NUMBER MARKED	
<b>Ives Island</b>	Fall Chinook	Wild	10 AdCWT	Ives Island	05/31/03	09-35-24	9,850	
	Fall Chinook	Wild	10 AdCWT	Ives Island	05/31/03	09-35-23	1,193	
		TOTAL	20				<b>11,043</b>	
<b>Leaburg</b>	Spring Chinook	2302	30 AdCWT	McKenzie R.	11/15/03	09-37-42	31,568	
	Spring Chinook	2302	30 AdCWT	McKenzie R.	03/09/04	09-37-43	31,630	
	Spring Chinook	2302	50 AdCWT	McKenzie R.	02/01/04	09-37-53	52,203	
	Spring Chinook	2302	50 CWT only	McKenzie R.	02/01/04	09-38-54	51,635	
	Spring Chinook	2302	65 Ad only	McKenzie R.	11/15/03	None	75,538	
	Spring Chinook	2302	719 Ad only	McKenzie R.	02/01/04	None	745,255	
	Summer Steelhead	2403	108 Ad only	McKenzie	04/07/04	None	113,640	
	Rainbow Trout	7202	400 Ad only	Various	Various	None	409,160	
	TOTAL	1452				<b>1,510,629</b>		
<b>Lookingglass</b>	Spring Chinook	2902	64 AdCWT	Imnaha R.	04/01/04	09-38-23	57,395	
	Spring Chinook	2902	64 AdCWT	Imnaha R.	04/01/04	09-38-22	57,337	
	Spring Chinook	2902	64 Ad only	Imnaha R.	04/01/04	None	71,371	
	Spring Chinook	2902	64 Ad only	Imnaha R.	04/01/04	None	71,401	
	Spring Chinook	2902	64 Ad only	Imnaha R.	04/01/04	None	71,403	
	Spring Chinook	2902	64 Ad only	Imnaha R.	04/01/04	None	71,400	
	Spring Chinook	200F02	31 Ad only	Lostine R.	04/01/04	None	8,425	
	Spring Chinook	200F02	35 AdCWT	Lostine R.	04/01/04	09-38-27	12,932	
	Spring Chinook	200F02	24 AdCWT	Lostine R.	04/01/04	09-38-39	26,930	
	Spring Chinook	200F02	64 AdCWT	Lostine R.	04/01/04	09-38-21	58,392	
	Spring Chinook	200F02	58 AdCWT	Lostine R.	04/01/04	09-38-29	27,987	
	Spring Chinook	200W02	58 AdCWT	Lostine R.	04/01/04	09-38-30	58,355	
	Spring Chinook	200W02	58 AdCWT	Lostine R.	04/01/04	09-38-31	58,793	
	Spring Chinook	80W02	67 CWT only	U. Gra. Ron.	04/01/04	09-38-33	70,623	
	Spring Chinook	80F02	67 AdCWT	U. Gra. Ron.	04/01/04	09-38-34	61,539	
	Spring Chinook	201F02	51 AdCWT	Catherine Cr.	04/01/04	09-38-35	46,069	
	Spring Chinook	201F02	51 AdCWT	Catherine Cr.	04/01/04	09-38-36	47,542	
	Spring Chinook	201F02	15 AdCWT	Catherine Cr.	04/01/04	09-38-37	16,190	
	Spring Chinook	201F02	41 AdCWT	Catherine Cr.	04/01/04	09-38-38	38,164	
	Spring Chinook	201W02	69 AdCWT	Catherine Cr.	04/01/04	09-38-40	71,246	
	Spring Chinook	80F02	21 AcCWT	U. Gra. Ron.	04/01/04	9-38-32	18,143	
	Spring Chinook	2902	21 PIT	Imnaha R.	04/01/04	PIT	20,949	
	Spring Chinook	20002	16 PIT	Lostine R.	04/01/04	PIT	15,953	
	Spring Chinook	20102	21 PIT	Catherine Cr.	04/01/04	PIT	26,202	
	Spring Chinook	20102	5.25 PIT	Catherine Cr.	04/01/04	PIT	5,247	
	Spring Chinook	8002	1.5 PIT	U.Gran.Ronde	04/01/04	PIT	1,497	
	Spring Chinook	200W02	116 VIE only	Lostine R.	04/01/04	Red-R	117,275	
	Spring Chinook	201W02	69 VIE only	Catherine Cr.	04/01/04	Green-R	71,531	
		TOTAL	1343.8					<b>1,280,291</b>

**Table 12. Marking and Tagging Summary for Calendar Year 2003**

HATCHERY	SPECIES	STOCK/BY	MARK #*1000 APPLIED	RELEASE LOCATION	RELEASE DATE	TAG CODE	NUMBER MARKED
<b>Marion Forks</b>	Spring Chinook	1102	280 Ad only	Sandy R.	03/15/04	None	299,980
	Spring Chinook	1902	530 Ad only	Clackamas R.	03/15/04	None	557,956
	Spring Chinook	2102	607 Ad only	N. Santiam R.	03/01/04	None	609,380
	Spring Chinook	2102	100 Ad only	Detroit Res.	07/15/03	None	114,918
	Spring Chinook	2102	30 AdCWT	N. Santiam R.	03/01/04	09-37-57	30,259
	Spring Chinook	1902	50 AdCWT	Clackamas R.	03/15/04	09-38-43	57,165
	Spring Chinook	2102	30 AdCWT	N. Santiam R.	03/01/04	09-37-41	30,687
	Spring Chinook	1102	30 AdCWT	Sandy R.	03/15/04	09-38-44	29,608
	Spring Chinook	1902	50 CWT only	Clackamas R.	03/15/04	09-38-45	50,872
	TOTAL		1707				<b>1,780,825</b>
<b>Mckenzie</b>	Spring Chinook	2302	255 Ad only	McKenzie R.	11/15/03	None	253,683
		TOTAL	255				<b>253,683</b>
<b>Nehalem</b>	Coho	9902	25 AdCWT	Nehalem R.	03/01/04	09-19-55	25,677
	Coho	9902	25 AdCWT	Nehalem R.	04/01/04	09-19-56	25,557
	Coho	3402	25 AdRMCWT	Trask R.	03/01/04	09-19-57	25,562
	Coho	3402	25 AdRMCWT	Trask R.	04/10/04	09-19-58	25,677
	Coho	9902	25 Ad only	Nehalem R.	03/01/04	None	27,008
	Coho	9902	25 Ad only	Nehalem R.	04/01/04	None	25,635
	Coho	3402	25 AdRM	Trask R.	03/01/04	None	26,029
	Coho	3402	25 AdRM	Trask R.	04/10/04	None	26,047
	Winter Steelhead	3203	90 Ad only	Neh./Nec. R.	04/01/04	None	94,292
	Winter Steelhead	9903	40 AdRM only	Nehalem R.	04/01/04	None	42,108
	TOTAL		330				<b>343,592</b>
<b>Oak Springs</b>	Rainbow Trout	15303	71 Ad	Various	Various	None	71,000
	Rainbow Trout	6603	33.6 AdLV	Various	Various	None	25,000
	Summer Steelhead	2403	65 Ad	Various	03/15/04	None	41,000
	Summer Steelhead	5003	40 AdLM	W Hood R.	05/09/04	None	41,000
	Summer Steelhead	6603	2 Ad	Various	Various	None	2,000
	Winter Steelhead	50W03	50 AdLV	Various	Various	None	60,000
	Winter Steelhead	122W03	40 AdLM	Clackamas R.	Various	None	27,000
	Rainbow Trout	5302	50 LV only	Various	05/22/03	None	50,000
	Rainbow Trout	5302	45 Ad only	Various	05/15/03	None	127,000
	TOTAL		396.6				<b>444,000</b>
<b>Oxbow</b>	Spring Chinook	1902	50 AdCWT	Clackamas R.	08/01/03	09-37-46	55,072
	Spring Chinook	1902	260 Ad only	Clackamas R.	08/01/03	None	248,133
		TOTAL	310				<b>303,205</b>
<b>Rock Creek</b>	Spring Chinook	5502	25 AdCWT	N. Umpqua R.	10/01/03	09-19-49	27,654
	Spring Chinook	5502	25 AdCWT	N. Umpqua R.	02/01/04	09-19-50	27,123
	Spring Chinook	5502	120 Ad only	N. Umpqua R.	10/01/03	None	122,000
	Spring Chinook	5502	242 Ad only	N. Umpqua R.	02/01/04	None	245,000
	Spring Chinook	5502	40 AdLM only	Diamond Lake	06/01/03	None	40,000
	Spring Chinook	5502	65 AdRM only	Various	Various	None	65,000
	Winter Steelhead	1802	123 Ad only	S. Umpqua R.	03/01/04	None	107,000
	Summer Steelhead	5502	110 Ad only	N. Umpqua R.	03/01/04	None	96,000
	Summer Steelhead	5502	33 LM only	N. Umpqua R.	05/01/04	None	33,500
	Rainbow Trout	17102	24 Ad only	Various	Various	None	24,000
	TOTAL		807				<b>787,277</b>

**Table 12. Marking and Tagging Summary for Calendar Year 2003**

HATCHERY	SPECIES	STOCK/BY	MARK #*1000 APPLIED	RELEASE LOCATION	RELEASE DATE	TAG CODE	NUMBER MARKED
<b>Round Butte</b>	Spring Chinook	6602	83 AdCWT	Deschutes R.	04/14/04	09-38-47	88,148
	Spring Chinook	6602	83 AdCWT	Deschutes R.	04/14/04	09-38-48	88,157
	Spring Chinook	6602	83 AdCWT	Deschutes R.	04/14/04	09-38-49	88,170
	Spring Chinook	6602	83 AdCWT	Deschutes R.	04/14/04	09-38-50	88,190
	Spring Chinook	5002	49 AdLMCWT	WF Hood R.	04/18/04	09-38-51	50,334
	Spring Chinook	5002	49 AdLMCWT	WF Hood R.	04/23/04	09-38-52	50,244
	Spring Chinook	5002	30 AdRVCWT	MF Hood R.	04/29/04	09-38-53	32,414
	TOTAL		460				<b>485,657</b>
<b>Salmon River</b>	Coho	3302	25 AdCWT	Salmon R.	05/01/04	09-19-59	25,360
	Coho	3302	25 Ad only	Salmon R.	05/01/04	None	35,532
	Fall Chinook	3602	200 AdCWT	Salmon R.	08/15/03	09-38-15	205,268
	Fall Chinook	14602	25 AdCWT	Yaquina R.	08/15/03	09-38-16	27,327
	Fall Chinook	14602	125 RV only	Yaquina R.	08/30/03	None	128,211
	TOTAL		400				<b>421,698</b>
<b>Sandy</b>	Coho	1102	950 Ad only	Various	Various	None	963,925
	Coho	1102	25 AdCWT	Blind Slough	05/01/04	09-37-32	27,379
	Coho	1102	25 AdCWT	Sandy R.	04/15/04	09-37-33	27,193
	Coho	1102	25 AdCWT	Sandy R.	05/15/04	09-37-34	27,856
	Coho	1102	25 CWT only	Sandy R.	05/15/04	09-39-18	27,681
	TOTAL		1050				<b>1,074,034</b>
<b>South Fork</b>	Spring Chinook	2402	575 Ad only	S. Klaskanine	03/15/04	None	675,012
	Spring Chinook	2402	25 AdCWT	S. Klaskanine	03/15/04	09-37-23	28,135
	TOTAL		600				<b>703,147</b>
<b>S. Santiam</b>	Spring Chinook	2402	50 AdCWT	S. Santiam R.	11/01/03	09-37-48	54,830
	Spring Chinook	2402	250 Ad only	S. Santiam R.	11/01/03	None	234,253
	Summer Steelhead	2403	40 Ad only	N. Santiam R.	04/01/04	None	40,500
	Summer Steelhead	2403	140 Ad only	S. Santiam R.	04/01/04	None	144,000
	TOTAL		480				<b>473,583</b>
<b>Trask</b>	Fall Chinook	3402	25 AdCWT	Trask R.	08/08/03	09-38-41	26,400
	Fall Chinook	3402	25 AdCWT	Necanicum R.	09/05/03	09-38-42	26,781
	Summer Steelhead	4703	40 AdRV	Wilson R.	04/01/04	None	33,771
	Winter Steelhead	121W03	50 Ad	Wilson R.	04/29/04	None	49,107
	Fall Chinook	3402	25 AdCWT	Trask R.	08/08/03	09-19-46	27,110
	Fall Chinook	3402	25 AdCWT	Wilson R.	07/26/03	09-19-47	27,113
	Fall Chinook	3402	127 Ad only	Trask R.	08/08/03	None	125,051
	Fall Chinook	3402	80 Ad only	Wilson R.	07/26/03	None	75,100
	TOTAL		397				<b>390,433</b>

**Table 12. Marking and Tagging Summary for Calendar Year 2003**

HATCHERY	SPECIES	STOCK/BY	MARK #*1000 APPLIED	RELEASE LOCATION	RELEASE DATE	TAG CODE	NUMBER MARKED	
<b>Umatilla</b>	Fall Chinook	9502	150 AdCWT	Umatilla R.	05/31/03	09-37-59	157,074	
	Fall Chinook	9502	150 AdCWT	Umatilla R.	05/31/03	09-37-60	156,164	
	Fall Chinook	9502	150 AdCWT	Umatilla R.	05/31/03	09-37-61	158,003	
	Fall Chinook	9502	150 AdCWT	Umatilla R.	05/31/03	09-37-62	156,220	
	Fall Chinook	9702	300 Ad only	Hell. Can. Dam	06/01/03	None	332,808	
	Fall Chinook	9702	3 PIT	Hell. Can. Dam	06/01/03	PIT	2,984	
	Spring Chinook	9102	20 AdLVCWT	Imeques	03/15/04	09-38-55	21,603	
	Spring Chinook	9102	20 AdLVCWT	Imeques	03/15/04	09-38-56	21,713	
	Spring Chinook	9102	20 AdLVCWT	Imeques	03/15/04	09-38-57	21,644	
	Spring Chinook	9102	20 AdLVCWT	Imeques	03/15/04	09-38-58	21,669	
	Spring Chinook	9102	20 AdLVCWT	Imeques	03/15/04	09-38-59	21,630	
	Spring Chinook	9102	20 AdLVCWT	Imeques	03/15/04	09-38-60	21,541	
	Spring Chinook	9102	20 Ad only	Imeques	03/15/04	None	19,018	
	Summer Steelhead	9103	20 AdLVCWT	Umatilla R.	03/31/04	09-39-20	20,566	
	Summer Steelhead	9103	20 AdLVCWT	Umatilla R.	04/15/04	09-39-21	21,639	
	Summer Steelhead	9103	20 AdLVCWT	Umatilla R.	04/29/04	09-39-22	21,879	
			TOTAL	1103				<b>1,176,155</b>
	<b>Willamette</b>	Spring Chinook	2202	1282 Ad only	Various	Various	None	1,516,984
		Spring Chinook	2402	193 Ad only	Various	Various	None	205,309
Spring Chinook		2402	238 Ad only	S Santiam R. M Willamette	03/01/04	None	247,112	
Spring Chinook		2202	207 Ad only	R.	03/04/04	None	197,731	
Spring Chinook		1902	180 Ad only	Clackamas R. M Willamette	03/20/04	None	186,887	
Spring Chinook		2202	30 AdCWT	R. M Willamette	02/01/04	09-37-54	33,488	
Spring Chinook		2202	30 AdCWT	R.	03/04/04	09-37-55	31,602	
Spring Chinook		2402	30 AdCWT	S. Santiam R.	03/01/04	09-37-56	33,784	
Spring Chinook		1902	30 AdCWT	Clackamas R.	03/20/04	09-37-37	33,628	
Spring Chinook		2202	50 AdCWT	M. Willamette	11/01/03	09-37-47	55,792	
Spring Chinook		2202	30 AdCWT	Fall Creek	02/29/04	09-37-38	33,150	
Spring Chinook		2402	30 AdCWT	S. Santiam R.	03/09/04	09-37-39	33,311	
Spring Chinook		2402	30 AdCWT	Molalla R.	02/29/04	09-37-40	33,300	
Spring Chinook		1902	30 AdCWT	Clackamas R.	03/20/04	09-38-14	33,182	
Spring Chinook		2402	30 AdCWT	S. Santiam R.	02/15/04	09-20-28	32,129	
Spring Chinook		2402	270 Ad only	S. Santiam R.	02/15/04	None	283,322	
Spring Chinook		2202	17 Ad only	Various	Various	None	17,215	
Spring Chinook		2402	12 Ad only	S. Santiam R.	03/01/04	None	12,102	
Spring Chinook		2202	25 AdCWT	Columbia R.	03/14/04	09-39-03	27,703	
Spring Chinook		2202	25 AdCWT	Columbia R.	03/14/04	09-39-04	28,052	
Spring Chinook		2202	25 AdCWT	Columbia R.	03/14/04	09-39-05	27,639	
Spring Chinook		2202	25 AdCWT	Columbia R.	03/14/04	09-39-06	27,926	
Spring Chinook		2202	25 AdCWT	Columbia R.	03/14/04	09-39-07	28,963	
Spring Chinook		2202	25 AdCWT	Columbia R.	03/14/04	09-39-08	27,578	
Summer Steelhead		2403	42 Ad only	N. Santiam R.	04/01/04	None	44,881	
Summer Steelhead		2403	115 Ad only	M Willamette R	04/07/04	None	120,046	
Rainbow Trout		7202	278 Ad only	Various	Various	None	175,027	
		TOTAL	3304				<b>3,527,843</b>	

**Table 12. Marking and Tagging Summary for Calendar Year 2003**

HATCHERY	SPECIES	STOCK/BY	MARK #*1000 APPLIED	RELEASE LOCATION	RELEASE DATE	TAG CODE	NUMBER MARKED
<b>Youngs Bay</b>	Fall Chinook	5202	25 AdLVCWT	Youngs Bay	07/31/03	09-38-09	26,369
	Fall Chinook	5202	375 LV only	Youngs Bay	07/31/03	None	345,903
		TOTAL	400				<b>372,272</b>
<b>TOTAL FISH MARKED IN 2003</b>							<b>25,986,566</b>
<b>TOTAL FISH TAGGED IN 2003</b>							<b>6,588,790</b>

**Table 13. Number of Tags Recovered by Fishery in 2003**

<b>FISHERY</b>	<b>JAN</b>	<b>FEB</b>	<b>MAR</b>	<b>APR</b>	<b>MAY</b>	<b>JUN</b>	<b>JUL</b>	<b>AUG</b>	<b>SEP</b>	<b>OCT</b>	<b>NOV</b>	<b>DEC</b>	<b>TOTAL</b>
River Sport	130	76	549	216	309	0	0	64	1,005	220	272	16	2,857
Hatchery	3,400	195	707	2,946	56	2,496	0	0	7,907	1,248	2,005	314	21,274
Spawning	18	0	33	0	0	0	0	0	0	1,067	1,655	0	2,773
Columbia River Treaty Gillnet	0	0	0	0	0	0	0	0	406	0	0	0	406
Columbia River Non-Treaty Gillnet	0	3,126	359	284	2,260	0	0	127	0	1,146	0	0	7,302
Youngs Bay Commercial Gillnet	0	0	0	0	0	0	0	0	0	634	221	21	876
Columbia River Terminal Gillnet	0	0	0	0	0	0	0	0	0	21	143	45	209
Ocean Sport and Troll	0	0	0	0	0	0	1,387	666	0	1,926	2,251	3,442	9,672
Estuary Sport	0	0	12	0	7	0	0	0	0	0	0	0	19
Whiting By-Catch	0	0	38	0	0	0	0	0	0	0	0	0	38
Ceremonial and Subsistence	0	0	0	0	0	0	0	0	0	0	0	0	0
<b>Totals</b>	<b>3,548</b>	<b>3,397</b>	<b>1,698</b>	<b>3,446</b>	<b>2,632</b>	<b>2,496</b>	<b>1,387</b>	<b>857</b>	<b>9,318</b>	<b>6,262</b>	<b>6,547</b>	<b>3,838</b>	<b>45,426</b>

**Table 14. Status of Hatchery Genetic Management Plans**

Region	Watershed	Program	Stock	Type of Activity (initial Take)	ESUs IMPACTED	Status to Completion	Final Sub to NOAA
HD	Deschutes	Hood R. CHS	066/ 050W	adult coll.	M. Columbia steelhead	Final to NOAA	01/22/01
HD	Deschutes	Hood R. STW	050W	adult coll.	L. Columbia steelhead	Final to NOAA	01/22/01
HD	Deschutes	Hood R. STS	050W	adult coll.	L. Columbia steelhead	Final to NOAA	01/22/01
HD	Deschutes	Deschutes R. STS	066W	adult coll.	M. Columbia steelhead	under fish division review	
HD	Deschutes	Deschutes R. CHS	066	adult coll.	M. Columbia steelhead	Final to NOAA	04/05/04
NE	Grande Ronde	Imnaha R. STS	029	adult coll.	Snake R. steelhead	Submitted to LSRCF	12/20/02
NE	Grande Ronde	Wallowa STS	056	releases	Columbia R. bull trout	Submitted to LSRCF	12/20/02
NE	Grande Ronde	Imnaha R. CHS	029	adult coll.	Snake R. chinook	Submitted to LSRCF	12/20/02
NE	Grande Ronde	Catherine Cr. CHS	201	adult coll.	Snake R. chinook	Final to NOAA	12/27/02
NE	Grande Ronde	Lostine R. CHS	200	adult coll.	Snake R. chinook	Final to NOAA	12/27/02
NE	Grande Ronde	U. Grande Ronde R. CHS	080	adult coll.	Snake R. chinook	Final to NOAA	12/27/02
NE	Grande Ronde	Lookingglass Cr. CHS	081	adult coll.	Snake R. steelhead	Final to NOAA	12/27/02
NE	John Day	Umatilla R. STS	091	adult coll.	M. Columbia steelhead	In development w/co-Mgrs	
NE	John Day	Umatilla R. Co	091	adult coll.	M. Columbia steelhead		
NE	John Day	Umatilla R. CHS	091	adult coll.	M. Columbia steelhead		
NE	John Day	Umatilla R. CHF	045	adult coll.	L. Columbia steelhead		
NE	John Day	Bonneville CHF (URB)	095	adult coll.	M. Columbia steelhead		
NW	M. Coast	Salmon R. Co	033	releases	OR Coast coho	Final to NOAA	11/07/01
NW	M. Coast	Siletz R. Co (STEP)	033W	adult coll.	OR Coast coho	Final to NOAA	10/29/01
NW	M. Coast	Munsel L. Coho (STEP)	038W			in development	
NW	M. Coast	Alea R. RB	072	releases	OR Coast coho	Needs region review	
NW	M. Coast	Alea R. STW	043	releases	OR Coast coho	Final to NOAA	05/28/03
NW	M. Coast	Siletz R. STW	033W	releases	OR Coast coho	Final to NOAA	03/19/02
NW	M. Coast	Siletz R. STS	033	releases	OR Coast coho	ready for public comment	
NW	M. Coast	Siuslaw R. STW	038	releases	OR Coast coho	Needs region review	
NW	M. Coast	Salmon R. CHF	036	releases	OR Coast coho	Needs region review	
NW	M. Coast	Yaquina R. CHF	146	releases	OR Coast coho	Needs region review	
NW	N. Coast	NF Nehalem R. Co	032 / 099	releases	OR Coast coho	Final to NOAA	03/27/01
NW	N. Coast	Trask R. Co	034	releases	OR Coast coho	Final to NOAA	09/10/01
NW	N. Coast	Wilson R. STW	121W	releases	OR Coast coho	Final to NOAA	08/09/01
NW	N. Coast	Fishhawk Lk. STW (Nehalem R.)	099	releases	OR Coast coho	80-85% complete	

**Table 14. Status of Hatchery Genetic Management Plans**

Region	Watershed	Program	Stock	Type of Activity (initial Take)	ESUs IMPACTED	Status to Completion	Final Sub to NOAA
NW	N. Coast	Nehalem R. STW	032	releases	OR Coast coho	80-85% complete	
NW	N. Coast	Nestuca R. STW (Cedar Creek)	047 / 047W	releases	OR Coast coho	Final to NOAA	03/12/04
NW	N. Coast	Trask R. CHF	034	releases	OR Coast coho	draft 70-75% complete	
NW	N. Coast	Nestucca R. STS	047	releases	OR Coast coho	draft 85-90% complete	
NW	N. Coast	Nestucca R. CHS	047	adult coll.	OR Coast coho	draft 85-90% complete	
NW	N. Coast	Nestucca R. CHF (STEP)	047W	releases	OR Coast coho	under public review	
NW	N. Coast	Trask R. CHS	034	releases	OR Coast coho	draft 70-75% complete	
NW	N. Coast	Whiskey Cr. CHS (STEP)	034	releases	OR Coast coho	draft 85-90% complete	
NW	N. Coast	Trask R. STW	047	adult coll.	OR Coast coho	80% complete	
NW	N. Coast	Big Creek STW	013	adult coll.	L. Columbia steelhead	phase 2, 70-75% com	
NW	N. Coast	L. Columbia R. CHS	022	adult coll.	U. Willamette chinook		
CRM	L. Columbia	Big Cr. CHF	013	adult coll.	L. Columbia steelhead		
CRM	L. Columbia	SAB Fall Chinook*	052 / 015	adult coll.	L. Columbia steelhead		
CRM	L. Columbia	Big Creek Coho	013	adult coll.	L. Columbia steelhead		
CRM	L. Columbia	SAFE Coho**	015 / 011 / 019	adult coll.	L. Columbia steelhead		
NW	N. Willamette	Bonneville CHF (URB)	095	releases	L. Columbia steelhead		
NW	N. Willamette	Columbia R. CO (BO)	014	adult coll.	M. Columbia steelhead		
NW	N. Willamette	Clackamas R. STW	122W	adult coll.	L. Columbia steelhead	Final to NOAA	10/25/01
NW	N. Willamette	Sandy R. STW	011W	adult coll.	L. Columbia steelhead	Final to NOAA	03/06/02
NW	N. Willamette	Sandy R. CO	011	adult coll.	L. Columbia steelhead		
NW	N. Willamette	Sandy R. CHS	019	adult coll.	U. Willamette chinook	In development	
NW	N. Willamette	Clackamas R. STS	024	adult coll.	L. Columbia steelhead		
NW	N. Willamette	Sandy R. STS	024	adult coll.	L. Columbia steelhead		
NW	N. Willamette	Clackamas R. CHS	019	adult coll.	U. Willamette chinook	In development	
NW	S. Willamette	N. Santiam CHS	021	adult coll.	U. Willamette chinook	Submitted to COE	02/24/04
NW	S. Willamette	S. Santiam R. CHS	024	adult coll.	U. Willamette chinook	Submitted to COE	03/01/04
NW	S. Willamette	Willamette R. CHS	022	adult coll.	U. Willamette chinook	Final to NOAA	01/16/04
NW	S. Willamette	McKenzie R. CHS	023	adult coll.	U. Willamette chinook	Final to NOAA	01/16/04
NW	S. Willamette	Willamette R. RBT	024	adult coll.	U. Willamette steelhead	In-development 02/04	
NW	S. Willamette	Willamette R. STS	024		U. Willamette steelhead	under public review	

**Table 14. Status of Hatchery Genetic Management Plans**

				Type of Activity		Status to	Final Sub
Region	Watershed	Program	Stock	(initial Take)	ESUs IMPACTED	Completion	to NOAA
SW	Rogue	Rogue R. CHS	052	adult coll.	SONC coho		
SW	Rogue	Rogue R. STS	052	adult coll.	SONC coho		
SW	Rogue	Elk R. CHF	035	adult coll.	SONC coho		
SW	Rogue	Chetco R. CHF	096	releases	SONC coho		
SW	Rogue	Chetco R. StW	096	releases	SONC coho		
SW	Rogue	Rogue R. STW	052	adult coll.	SONC coho		
SW	Rogue	Applegate R. STW	062	releases	SONC coho		
SW	Rogue	Rogue R. Co	052	adult coll.	SONC coho		
SW	Rogue	Rogue R. ChF	061	releases	OR Coast coho		
SW	Umpqua	Coos River Co	037	adult coll.	OR Coast coho	Final to NOAA	08/07/01
SW	Umpqua	Coquille R. Co	044	releases	OR Coast coho	Final to NOAA	08/06//01
SW	Umpqua	Coos River ChF	037	releases	OR Coast coho	Review complete ==> at Dist	
SW	Umpqua	Coos River StW	037	releases	OR Coast coho	In review	
SW	Umpqua	Coquille R. StW	044	releases	OR Coast coho	In development	
SW	Umpqua	SF Coquille R. StW	144	releases	OR Coast coho	In development	
SW	Umpqua	Tenmile Lks StW	088	releases	OR Coast coho	In development	
SW	Umpqua	Coquille R. CHF	044	releases	OR Coast coho	Review complete ==> at Dist	
SW	Umpqua	N. Umpqua R. CHS	055	releases	OR Coast coho	In development	
SW	Umpqua	N. Umpqua R. StS	055	releases	OR Coast coho	In development	
SW	Umpqua	S. Umpqua R. CHF	018	releases	OR Coast coho	In development	
SW	Umpqua	Smith R. CHF	151	releases	OR Coast coho	In development	
SW	Umpqua	N. Umpqua R/S. Umpqua R. Co	055	releases	OR Coast coho	Final to NOAA	03/26/03
SW	Umpqua	S. Umpqua R. StW	018	releases	OR Coast coho	In development	
SW	Umpqua	Coos Striped Bass		releases	OR Coast coho	Review complete ==> at Fish D.	

\* Combined HGMP for Big Creek Rogue CHF (Stock 052) and Klaskanine River CHF (Stock 015)

\*\* Combined HGMP for SF Klaskanine R. Coho, L. Columbia R. Coho (SA), and L. Columbia R. Coho (EC)

**Table 15. Fish Feed Purchased in 2003**

<b>Facility</b>	<b>Maunfacturer</b>	<b>Cost</b>	<b>Pounds</b>
Alsea	Bio-Oregon	\$2,317	2,508
	Skretting	\$2,217	2,384
	Silver Cup	\$32,344	139,410
Bandon	Bio-Oregon	\$10,614	24,820
Bonneville	Bio-Oregon	\$114,109	179,682
	Skretting	\$7,665	11,152
	Silver Cup	\$24,841	43,876
BO Captive Brood	Skretting	\$1,615	2,200
Big Creek	Bio-Oregon	\$92,933	148,116
	Skretting	\$14,465	28,380
Butte Falls	Bio-Oregon	\$1,415	1,056
	Skretting	\$10,595	30,976
	Silver Cup	\$3,173	11,600
Cascade	Bio-Oregon	\$25,378	41,355
	Skretting	\$36,991	51,921
Cedar Creek	Bio-Oregon	\$29,257	61,429
Clackamas	Bio-Oregon	\$60,450	100,188
Cole Rivers	Bio-Oregon	\$299,841	604,611
	Skretting	\$48,394	125,949
Elk River	Bio-Oregon	\$28,036	57,238
	Skretting	\$2,912	1,464
Fall Creek	Rangen	\$8,108	23,000
Fall River	Bio-Oregon	\$746	1,280
	EWOS	\$4,956	5,880
	Skretting	\$1,594	1,496
	Rangen	\$148	450
	Silver Cup	\$14,588	47,870
Gnat Creek	Bio-Oregon	\$24,549	30,928
Irrigon	Bio-Oregon	\$5,865	9,740
	Silver Cup	\$88,164	287,350
Klamath	Skretting	\$13,220	23,620
	Silver Cup	\$13,220	45,400
Leaburg	Bio-Oregon	\$35,645	91,787
	Skretting	\$4,745	11,396
	Rangen	\$21,276	63,300
Lookingglass	Bio-Oregon	\$24,124	15,048
	Skretting	\$7,480	14,960
Marion Forks	Bio-Oregon	\$28,967	49,780
	Skretting	\$3,671	3,564
McKenzie	Bio-Oregon	\$87,936	157,873
North Nehalem	Bio-Oregon	\$8,672	22,340
	EWOS	\$3,559	4,840
	Silver Cup	\$15,766	51,450

**Table 15. Fish Feed Purchased in 2003**

<b>Facility</b>	<b>Maunfacturer</b>	<b>Cost</b>	<b>Pounds</b>
Oak Springs	Bio-Oregon	\$13,490	23,591
	EWOS	\$33,205	44,660
	Rangen	\$18,139	57,150
	Silver Cup	\$41,499	122,470
Oxbow	Bio-Oregon	\$20,873	24,907
	Skretting	\$30,546	65,491
Roaring River	Bio-Oregon	\$12,767	11,340
	Skretting	\$205	132
	Silver Cup	\$39,318	123,100
Rock Creek	Bio-Oregon	\$38,061	85,926
	Skretting	\$38	44
Round Butte	Bio-Oregon	\$20,321	25,753
	EWOS	\$17,560	31,812
	Skretting	\$20,802	47,388
Salmon River	Bio-Oregon	\$24,654	48,731
	Skretting	\$4,024	4,792
Sandy	Bio-Oregon	\$24,084	49,580
	Skretting	\$11,836	18,920
South Santiam	Bio-Oregon	\$2,723	4,950
	Skretting	\$1,580	2,596
	Silver Cup	\$22,943	69,030
Trask	Bio-Oregon	\$19,140	44,031
Umatilla	Bio-Oregon	\$45,312	67,913
Wallowa	Bio-Oregon	\$28	44
	Skretting	\$126	132
	Silver Cup	\$9,795	30,000
Willamette	Bio-Oregon	\$39,332	84,000
	Skretting	\$136,270	220,011
	Rangen	\$21,751	54,300
Wizard Falls	Bio-Oregon	\$8,664	19,400
	Skretting	\$12,378	15,928
Totals	Bio-Oregon	\$1,150,303	2,089,945
	EWOS	\$59,280	87,192
	Skretting	\$373,369	684,896
	Silver Cup	\$305,651	971,556
	Rangen	\$69,422	198,200
<b>Grand Total</b>		<b>\$1,958,025</b>	<b>4,031,789</b>

**Table 16. Stock codes used by ODFW Fish Propagation**

01	ST. PAUL PONDS	32	N FK NEHALEM AND TRIBS
01U	ST. PAUL PONDS - UNKNOWN BROOD YEAR	32B	N FK NEHALEM AND TRIBS
01W	ST. PAUL PONDS	33	SILETZ R (SILETZ HATCHERY)
02	NECANICUM R AND TRIBS	33W	SILETZ R - WILD
03	RES. REDBANDS	34	TRASK R (TRASK HATCHERY)
04	MIAMI RIVER AND TRIBS	34W	TRASK R (WILD)
05	FLORAS CREEK & NEW RIVER	35	ELK R (ELK R HATCHERY)
05U	STEP RELEASES - UNKNOWN BYR & STOCK	36	SALMON R (SALMON R HT)
06	EUCHER CREEK AND TRIBS	37	COOS RIVER
07	WINCHUCK RIVER AND TRIBS	37M	COOS RIVER MIXED
08	HUNTER CREEK AND TRIBS	38	SIUSLAW RIVER
09	WHISKEY CREEK	38C	SIUSLAW RIVER - COMBINED STOCKS
10	SCOGGINS CREEK, TUALATIN RIVER	38W	SIUSLAW RIVER-WILD STW
11	SANDY RIVER STW/CO/CHS	39	BURNT HILL CREEK
11W	SANDY RIVER WILD STW/CO/CHS	40	MAIN NEHALEM & TRIBS.
12	OXBOW	41	ROUND BUTTE HATCHERY
13	BIG CREEK (BIG CR HAT) TULE OR STW	42	MAINE
13C	BIG CR/KK TULE CHF	43	ALSEA R AND TRIBS (EX FALL CR)
13W	BIG CREEK/MARMOT CR TRAP TULE OR STW	43B	ALSEA R & TRIBS (EX FALL CR) BROOD STOCK
14	TANNER CREEK - TULES OR COHO	43W	ALSEA R & TRIBS (EX FALL CR) WILD
15	KLASKANINE RIVER TULES OR COHO	44	COQUILLE R (BANDON HATCHERY)
16	EAGLE CR (CASCADE HATCHERY)	44M	COQUILLE RIVER
17	PISTOL R AND TRIBS	45	WASHINGTON (URB'S)
18	COW CR. (S. UMPQUA)	46	BUTTE FALLS HATCHERY
19	CLACKAMAS R EARLY CHS (EAGLE CREEK COHO)	47	NESTUCCA R (CEDAR C.HAT)
19W	MARMOT CR TRAP CHS	47F	F1 STW NESTUCCA R (CEDAR C.HAT)
20	CLACKAMAS R LATE (EAGLE CR-STW) OR CO	47W	NESTUCCA R (CEDAR CR HATCHERY) WILD
20W	CLACKAMAS R LATE-COHO	48	DIAMOND LAKE
21	N SANTIAM RIVER	49	FALL R HATCHERY
21M	21 & 24 FOR CEDC,19 & 21 FOR BPA PROJECT	50	HOOD RIVER
22	MID WILLAMETTE R (WI HATCHERY)	50W	HOOD R WILD STW/STS START 3-98 DIST-PROJ
22C	MID WILLAMETTE R (WI HATCHERY) COMBINED	51	KLAMATH HATCHERY
23	MCKENZIE R (MCKENZIE HATCHERY)	52	ROGUE RIVER-COLE RIVERS HATCHERY
23C	MCKENZIE R (MCKENZIE HATCHERY) COMBINED	52W	WILD STEELHEAD-ROGUE RIVER
24	S SANTIAM (STLHD-ORIGIN:SKAMANIA WA)STS	53	OAK SPRINGS HATCHERY
24M	301-WA(SKAMMANIA STK)STS/CHS/SO.SANTIAM	53B	OAK SPRINGS HATCHERY - BROOD STOCK
24W	MARMOT CR TRAP STW	54	ROARING RIVER HATCHERY
25	FALL CREEK RESERVOIR (CARSON)	55	UMPQUA R (ROCK CREEK HATCHERY)
26	FALL CREEK RESERVOIR (WILLAMETTE)	56	WALLOWA RIVER
27	MIAMI R.	56M	WALLOWA SUPPLEMENTAL - CAUGHT IN FALL 03
28	WILLIAMSON RIVER	57	WILLAMETTE RIVER
29	IMNAHA R AND TRIBS.	58	WIZARD FALLS HATCHERY
29C	IMNAHA RIVER NATIVE AND HATCHERY STOCK	58B	WIZARD FALLS HATCHERY - BROOD STOCK
29W	IMNAHA RIVER NATIVE	59	LEABURG HATCHERY-LONG TOM STOCK
29X	IMNAHA R AND TRIBS. (WILD & HATCHERY)	60	USF&W (EXCEPT HAGERMAN)
30	YAQUINA R	61	LOWER ROGUE RIVER
30W	YAQUINA RIVER (WILD)	62	APPLEGATE RIVER
31	FALL CREEK (ALSEA R)	62W	WILD STEELHEAD-APPLEGATE RIVER
31W	FALL CR TRAP (ALSEA R) WILD	63	EEL LAKE
		63C	63 COMBINED WITH 88= BENSON STK
		64	DAVIS LAKE
		65	KLAMATH LAKE
		66	DESCHUTES RIVER
		66B	DESCHUTES RIVER - BROOD STOCK
		66M	DESCHUTES RIVER MIXED

66W	DESCHUTES RIVER (WILD)	111	LEWIS RIVER (SPEELYAI HAT) EARLY COHO
66Z	DESCHUTES RIVER	112	PUGET SOUND X SILETZ (OREAQUA STOCK)
67	PAULINA LAKES-WAS EAST LK	113	SILTCOOS
68	WICKIUP RES.	114	KALAMA FALLS-START 92-TULE OR EARLY COHO UPPER/LOWER
69	ODELL LAKE	115W	COLUMBIA RIVER WARMWATER FISH - WILD
70	CANADA	116	GRAY'S HARBOR, WA
71	CALIFORNIA	117	ELOKOMIN HATCHERY, WA EARLY COHO
72	WA TULES CRSN/COWLITZ OR CAPECOD RAINBOW	118	GOLDENDALE (RAINBOW)
72M	WA TULES CRSN/COWLITZ OR CAPECOD RAINBOW	119	HACKLEMAN CR/FISH LAKE
73	MONTANA	119B	HACKLEMAN CR/FISH LAKE
74	WYOMING	119W	HACKLEMAN CR/FISH LK-WILD BROOD STK
75	CARSON WA-CHS	120	IDAHO (LOST RIVER)
76	KILCHIS R (COAL CR)	121	WILSON RIVER STEELHEAD
77	HAGERMAN IDAHO (URB'S)	121W	WILSON RIVER STW (WILD)
78	PARSNIP RES.	122	MARKED-WILD STW TAKE/FARADAY TRAP CL HAT
79	CRESCENT LAKE	122W	UNMARKED-WILD STW-RETURNED TO CL/FARADAY
80	UPPER GRANDE RONDE (LOOKINGGLASS)	123	HOSMER LAKE NATURAL TROUT & AS
80F	UPPER GRANDE RONDE (WILD, CAPTIVE, F1)	124	BC (STW) 13'S COLL @CL FOR NEW BROODSTK
80W	UPPER GRANDE RONDE (CONVENTIONAL PRGRM)	125	COLUMBIA RIVER PINK SALMON
80Z	UPPER GRANDE RONDE (CAPTIVE BROOD PRGRM)	126	PLYMPTON CR-CHF ASTORIA HI-VO0104 WAS 15 START JUNE 1996
81	LOOKINGGLASS CREEK	127	CRANE PRARIE RAINBOW
82	COLORADO	127B	CRANE PRARIE BROOD RB
83	DETROIT RES.	127F	CRANE PRAIRIE PROGENY OF RB BROOD STOCK
84	LOBSTER CR (ROGUE)	127W	CRANE PRAIRIE RB FOR WILD BROOD STOCK
85	IDAHO	130	SIMTUSTUS LK-NATURAL
85B	RAPID R SURROGATE BROOD STOCK (8595) '96 EXPERIMENT	137	MILLICOMA RIVER-STARTING WITH 94 BROOD
85W	SPRING CHINOOK	143	ALSEA RIVER WILD
86	UTAH	144	SOUTH FK COQUILLE-BEGINNING 92 BROOD
87	IRRIGON HATCHERY	145	SILETZ STK COHO (YAQUINA BAY) BEG 95 BRY
88	TEN MILE LKS (EX EEL LK)	146	YAQUINA SALMON RANCH (CHF) SILETZ STK
89	FOSTER RES.	146W	YAQUINA SALMON RANCH (CHF) SILETZ STK
90	SUTTLE LAKE	150	MILL CR TRIB/UMPQUA R/CHF-BEG 10/96 STEP
91	UMATILLA RIVER	150C	RC 18'S MIXED WITH 150'S BY STEP VO2014
91W	UMATILLA RIVER WILD-FISH	150W	MILL CR TRIB/UMPQUA R/CHF-BEG 10/96 STEP
92	GOLD LAKE	151	SMITH R (CHF/CO) STEP-VO2014 BEG 10/97
93	N TWIN LAKE	151W	SMITH R (CHF/CO) STEP-VO2014 BEG 10/97
94	MANN LAKE	152	N. TOUTLE RIVER (WASHINGTON)12/20/99
95	COLUMBIA R (UPR RIVER BRIGHTS)	153	LOWER CROOKED RIVER
95M	COLUMBIA R (URB'S) - INCLUDES 45,91,110	153W	LOWER CROOKED RIVER
96	CHETCO R (JACK CR TRAP)	154	UPPER CROOKED RIVER
97	SNAKE RIVER		
98	COWLITZ R		
99	FISH HAWK LK (NEHALEM R)		
100	PAMELIA CT-ORIGIN:CHELAN WA 72'S		
101W	LOWER COLUMBIA WHITE STURGEON (WILD)		
102	WARM SPRINGS		
103	DESERT SPRINGS RAINBOW		
105	TAHKENITCH		
105W	TAHKENITCH (WILD-FISH)		
106C	SANDY ADULT SPRING CHINOOK		
110	LITTLE WHITE SALMON WA URB'S-BEGIN 92		

156 WILD RAINBOW FOR BREEDING  
 EXPERIMENT  
 157 TRIPLOIDS RAINBOW  
 171 EAGLE LK RB FROM CDF/KLAMATH  
 HATCHERY  
 175 RAINBOW FISH CREEK>UMPQUA R  
 175B RAINBOW OUT OF FISH CREEK>UMPQUA  
 TRIB  
 195 COLUMBIA R (LWR RIVER BRIGHTS)  
 200F LOSTINE CR (WILD, CAPTIVE BRED, F1  
 GEN)  
 200W LOSTINE CR (CONVENTIONAL PROGRAM)  
 200Z LOSTINE CR (CAPTIVE BROODSTOCK  
 PROGRAM)  
 201 CATHERINE CR  
 201F CATHERINE CR (WILD,CAPTIVE BRED,F1  
 GEN)  
 201W CATHERINE CR (CONVENTIONAL  
 PROGRAM)  
 201Z CATHERINE CR (CAPTIVE BROODSTOCK  
 PROGRAM)  
 301 WASHINGTON (SKAMANIA HAT STOCK)  
 STW STS  
 302 OMAK WA (LAHONTAN CT) BEGIN 96  
 303 PRIEST RAPIDS (URB'S) BEG 96 BRY  
 304 FORD WA 72'S (BT) BEGIN 98  
 364 BROOK TROUT  
 364B BROOK TROUT/FORD HATCHERY WA  
 500 WARM WATER RELOCATION CHICO GAME  
 FISH FM  
 500W REDEAR SUNFISH  
 501 UNKNOWN ORIGIN STW @ CLACKAMAS  
 HATCHERY  
 502 HOOD R (STRAYS KILLED FOR CWT)  
 503 UNKNOWN ORIGIN STS @CLACKAMAS  
 HATCHERY  
 503W BELLERUD STOCK (NE OR BULL TROUT  
 ONLY)  
 504 UNKNOWN ORIGIN - COLUMBIA RIVER  
 504W UNKNOWN ORIGIN WILD - COLUMBIA  
 RIVER  
 505 UNKNOWN HATCHERY STRAYS  
 507 BIG CR HAT BY HOOD R WILD CROSSES  
 508 LEAVENWORTH COHO  
 509 CONSERVATION HATCHERY IMPROV.  
 PROGRAM CO  
 551 FISH CREEK>N UMPQUA RAINBOW  
 551F FISH CREEK>N UMPQUA RAINBOW F1  
 GEN.  
 551W FISH CREEK>N UMPQUA RAINBOW  
 600 TROUT RELOCATION  
 600W TROUT RELOCATION (WILD)