

Lamprey Management in Portland

Kaitlin Lovell

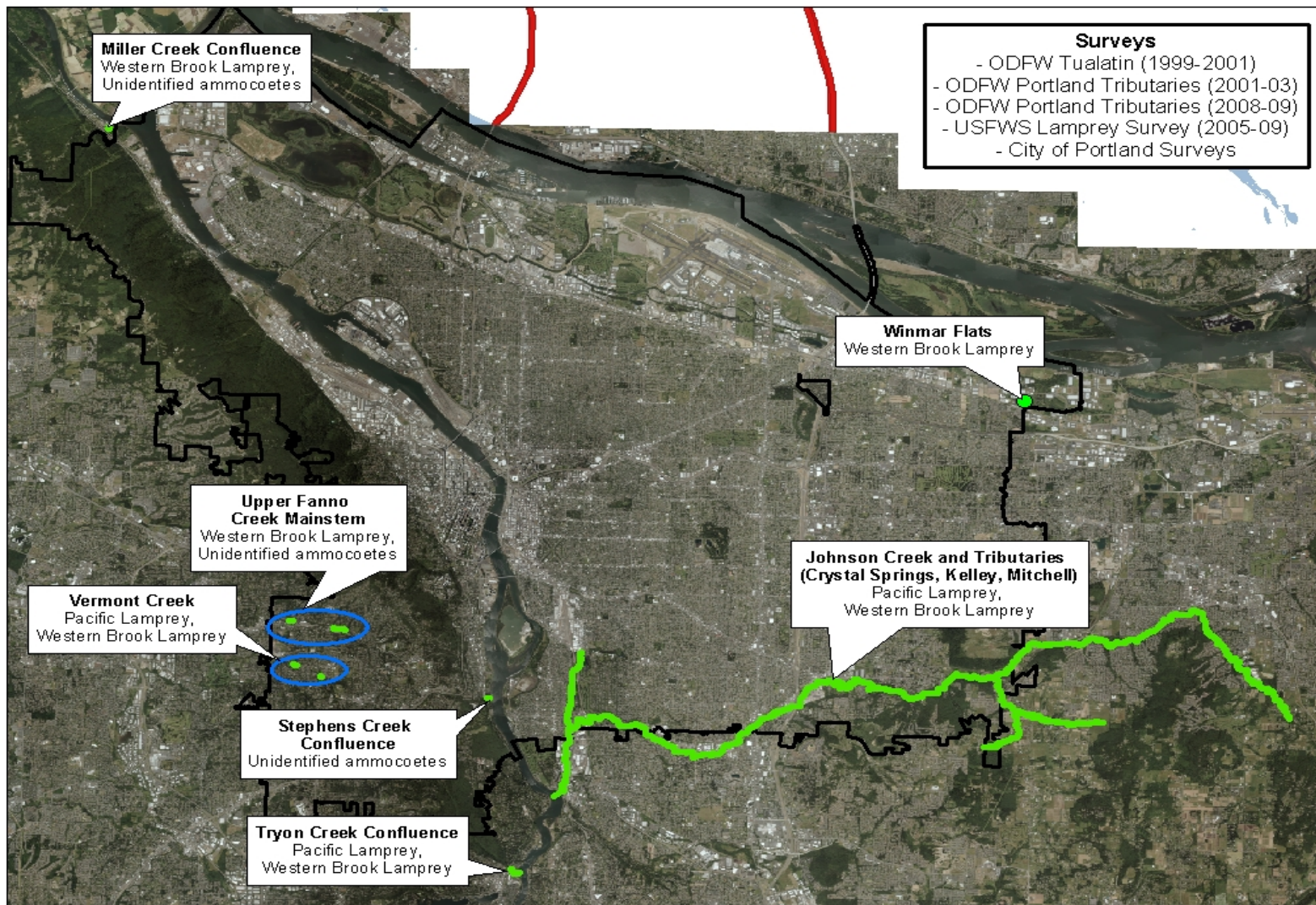
ODFW Lamprey Workshop Nov. 2, 2011



ENVIRONMENTAL SERVICES
CITY OF PORTLAND

working for clean rivers

Documented Lamprey Presence in Portland



USFWS Willamette Study

- Probabilistic sampling from Falls to Mouth, including Multnomah Channel using deepwater shocker
- Strata: Mouth, Superfund, Upper, Multnomah Channel
- 208 quadrats sampled
- Ammocoetes detected in all strata except Multnomah Channel
 - excluding Multnomah Channel, lamprey detected in ~8% of quadrats
 - Pacific and Western Brook Lamprey detected
 - Found in depths up to 16 m, no difference in detection probability with depth



ENVIRONMENTAL SERVICES
CITY OF PORTLAND

working for clean rivers

Conclusions

- “...highlights the importance of Willamette River mainstem areas, including the impaired Superfund reach, as rearing habitat and not just as a migration corridor.” p. 21
- Further research on lamprey movements through mainstem habitats is warranted
 - Columbia River, above/below hydropower projects, migration distance, passage routes, survival rates



Managing for what we know

- North Reach Plan
 - Multiple jurisdictions regulate the river
 - Industry argued that regulations were duplicative and redundant
 - ODFW has jurisdiction over state-owned lands (i.e. DSL submerged lands) but currently exercises that jurisdiction in a consultative fashion to DSL for removal-fill permits
 - CoP only entity with regulatory jurisdiction over lamprey (and other state species).



Managing for what we know

- Projects
 - Tryon Creek Culvert improvements/retrofits
 - Fish Passage for salmon and lamprey ex: Crystal Springs
- Fish Salvage



ENVIRONMENTAL SERVICES
CITY OF PORTLAND
working for clean rivers

Where we could improve

- Directed Salvage
 - Partner with tribes and USFWS?
- Substantive requirements through Cleanup – Zidell example
- Full Scale research in mainstem Willamette
 - Effect of the Salmon study on management as precedence

