

Access and Habitat Program Project Evaluation Form



Program Objective: The Access and Habitat Program's motto, "Landowners & Hunters Together for Wildlife," conveys the program's basic mission to foster partnerships between landowners and hunters for the benefit of the wildlife they value. The program also seeks to recognize and encourage the important contributions made by landowners to the state's wildlife resource.

Project Name: _____ **Project #:** _____

	Access Acres	Habitat Acres	Habitat Category:	0	Total Score:	0
"Welcome" Private	0		(range: 1-6; see flow chart on page 4. Not applicable to access-only projects)		Total Possible:	36
By-Permission Private	0					
Inaccessible Public*	0					
Accessible Public*	0					

Instructions:

Project Type	Complete these sections			
	General Criteria	Access Criteria	Habitat	Criteria
Access Only	X	X		
Habitat Only	X		X	
Access & Habitat	X	X	X	

Mark 1 point in the corresponding "Project Score" box for EACH criterion that is met. Example: for question 2, if partnerships include 4 sports groups, award points for the first 2 criteria. Do not mark more than 1 point per box. Point schedule is designed to weigh access-only and habitat-only projects equally.

Definitions:

Inaccessible Public*: Access will be provided through private land to public land that is completely landlocked (surrounded) by private land, legally precluding public hunting access. Total area includes only public land within the boundary of private ownership.

Accessible Public*: Access through private land will improve accessibility to public land. Public land may be extremely difficult to access otherwise, but is not legally surrounded by private land. Total area includes only public land that is closer (in linear distance) to the landowner's access point(s) than any other public access point.

* Access to public land MUST be provided on a "Welcome to Hunt" basis

General Criteria

(mark a "1" in the "Project Score" box for EACH criterion that is met)

1. Habitat Condition

Score 1 point only if the property contains the resource in sufficient abundance/quality to support target species referenced in questions 11, 15, 16 and 19 (during at least one season of the year). For habitat projects, use the predicted future condition. Justify your score.

Food: _____	0	n/a	n/a	n/a
Water: _____	0	n/a	n/a	n/a
Cover: _____	0	n/a	n/a	n/a

Project Score	Access Fee Assessment		
	Private Land	Inacc. Public	Acc. Public
0	n/a	n/a	n/a
0	n/a	n/a	n/a
0	n/a	n/a	n/a

2. Partnerships

Partners contributing financial or in-kind support:

1 or more Sports groups.....	0		
3 or more Sports groups.....	0		
Educational programs / non-governmental organizations.....	0		
Other government agencies or ODFW programs (i.e. OWEB, R&E).....	0		

0			
0	n/a	n/a	n/a
0			
0			

		Project Score	Access Fee Assessment		
3. Matching Funds	Total matching funds (monetary and in-kind)	0			
	> 1% matching funds.....	0			
	> 25% matching funds.....	0	n/a	n/a	n/a
4. Damage	Project would mitigate current damage to private property:	0			
	Wildlife damage occurring on private property.....	0			
	Landowner participates in ODFW damage control programs.....	0			
General Total		0	0	0	0
<i>General Possible</i>		12	5	5	5

Access Criteria - Applies to **private land** access that would be provided under the proposed project.
(mark a "1" in the "Project Score" box for EACH criterion that is met)

5. Public Land	Project located in Wildlife Management Unit with <50% public land.....	0	n/a	n/a	n/a
6. Private access	Private land access type:	0			
	Project would provide access to private land.....	0			
7. Public access	Access through private lands would:	0			
	improve access to public land.....	0			
8. Special Access	Project would provide special youth or disabled hunter access opportunities.....	0	n/a	n/a	n/a
9. Species Permitted	Species groups include big game, waterfowl, upland birds, turkey, and predators/varmints.	0	n/a	n/a	n/a
	2+ species groups available and permitted.....	0	n/a	n/a	n/a
10. Under-rep. Species*	Project provides access to under-represented species in the watershed.....	0	n/a	n/a	n/a
11. Harvest Restriction	Landowner would not restrict sex or species permitted for lawful harvest.....	0	n/a	n/a	n/a
12. Season Restriction	Landowner would not restrict access to any hunting season(s).....	0	n/a	n/a	n/a
13. Dispersion	Property would provide access to animals pushed off of publicly accessible land during hunting season.....	0	n/a	n/a	
Access Total		0	0	0	0
<i>Access Possible</i>		12	8	8	7
Payment Fee Total			n/a	n/a	n/a

* lists of under-represented species will be created by A&H state coordinator and approved by A&H Board

Habitat Criteria

(mark a "1" in the "Project Score" box for EACH criterion that is met)

Project
Score

14. Department Priorities Project is located within target area and will benefit target species identified in any of these Department programs: Mule Deer Initiative, Sage Grouse Initiative, Black-tailed Deer Plan Implementation..... 0

15. Location importance: Applies to species that the habitat work will benefit. Question structured to equally weigh big game and game bird projects - score "1" if either item in each bracket is true:

{ Area populations < 90% of management objective (deer and elk).....
or:
} Project will increase wintering populations of upland birds/waterfowl..... 0

{ Area populations < 75% of management objective (deer and elk).....
or:
} Project will increase breeding populations of upland birds/waterfowl..... 0

16. Conservation Strategy Project addresses Oregon Conservation Strategy (OCS) concerns:
 Project action benefits Strategy Habitat or Strategy Species..... 0
 [above] **AND** action occurs in Conservation Opportunity Area (COA)..... 0

17. Critical Habitat Applies to the specific GAME habitat that the project will maintain or enhance. Use accompanying flow chart and definitions to determine habitat category. Definitions are slightly amended from OAR Division 415 to be game-specific.

Project meets requirements of Habitat Categories 1-4..... 0
 Project meets requirements of Habitat Categories 1-2..... 0

18. Habitat Connectivity Project will help facilitate local animal movement (fence removal, etc.)..... 0
 Project will help establish or maintain a wildlife habitat corridor or otherwise reduce fragmentation on landscape level..... 0

Description of habitat connectivity benefit (required):

19. Habitat Impact Describes the predicted impact that the project will have on the habitat. Habitat work must benefit game species.

Project will increase the habitat quantity/quality >25% per unit treated..... 0
 Project will increase the habitat quantity/quality >50% per unit treated..... 0

Description of habitat impact:

20. Population Impact Describes the predicted impact that habitat improvements (excluding external variables such as weather, etc.) will have on game species on the project site. Provide estimates for all targeted species.

Local abundance of at least one targeted game species should increase >25%..... 0

<u>Estimated Abundance</u>			
Species	Pre-treatment	Post-treatment	
			Habitat Total
			<i>Habitat Possible</i>
			0
			12
			Grand Total
			<i>Total Possible</i>
			0
			36

21. Miscellaneous Describe other project details that may help with prioritization or fee assessment (i.e. current market value of similar hunting leases in the vicinity)..... **NO POINTS**

Access and Habitat Project Evaluation - Appendix

Under-represented Species

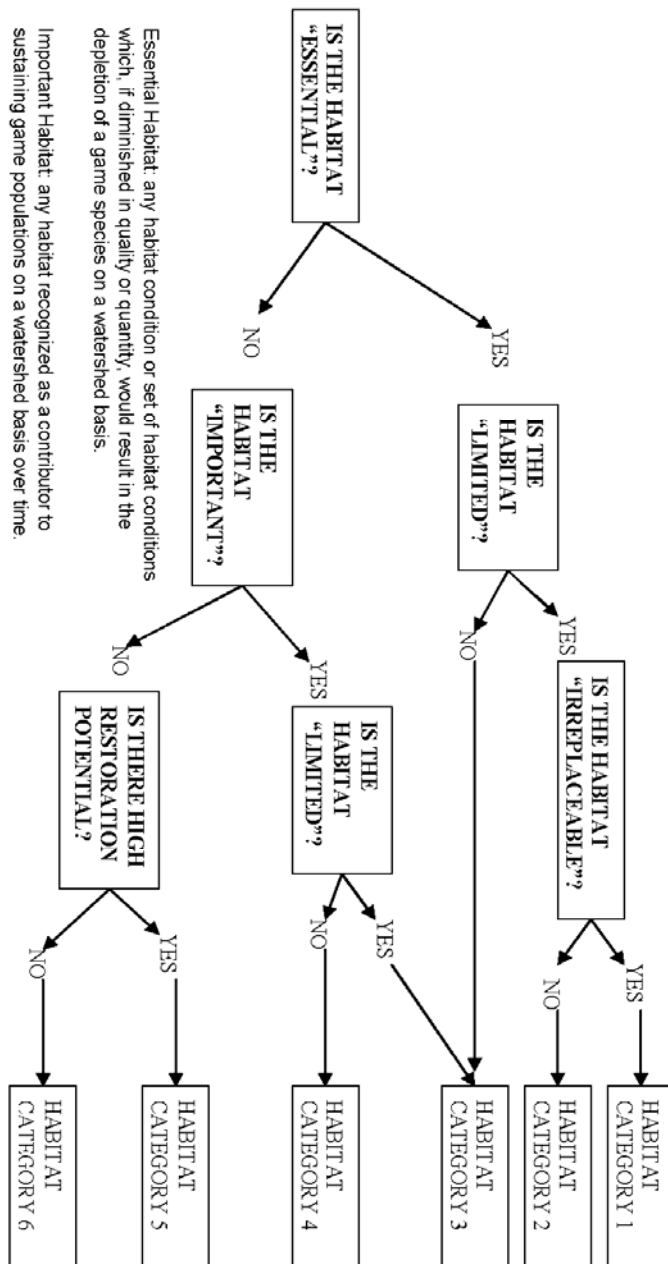
Definition: game species that exist in the watershed district in huntable numbers, but that the general public does not have reasonable hunting access to (via public land, current A&H properties, etc.)

Watershed	Species
Malheur	pheasant, waterfowl, turkey
South Willamette	waterfowl, turkey, valley quail
North Coast	predators, waterfowl
Grande Ronde	upland game birds
Rogue	dove, waterfowl

Watershed	Species
Deschutes	waterfowl, valley quail, chukar, dove
John Day	upland game birds
Umpqua	waterfowl, dove, turkey
Klamath	waterfowl, quail
North Willamette	waterfowl

A&H Habitat Category Flow Chart

Note: These definitions have been amended from OAR Division 415 to be game-specific and applied on a watershed basis. Habitat Category designations made on this Evaluation Form are for Access & Habitat Program use only, and do not have any legal implications associated with OAR 415.



Irreplaceable Habitat: successful in-kind habitat mitigation to replace lost habitat quantity and/or quality is not feasible within an acceptable period of time or locations, or involves an unacceptable level of risk or uncertainty, depending on the habitat under consideration and the game populations that are affected. "Acceptable", for the purpose of this definition, means in a reasonable time frame to benefit the affected game species.

Limited Habitat: an amount of habitat insufficient or barely sufficient to sustain game populations on a watershed basis over time.

Important Habitat: any habitat recognized as a contributor to sustaining game populations on a watershed basis over time.

Essential Habitat: any habitat condition or set of habitat conditions which, if diminished in quality or quantity, would result in the depletion of a game species on a watershed basis.