

**Violation Report**  
 If you witness a violation, record information on this form and present it to an official.

TIP Phone: 1-800-452-7888  
 Email: TIP@state.or.us

Time \_\_\_\_\_ Date \_\_\_\_\_

Vehicle make, model & color \_\_\_\_\_

Vehicle license & state \_\_\_\_\_

Location / road number \_\_\_\_\_

City/County: \_\_\_\_\_

Number of persons involved \_\_\_\_\_

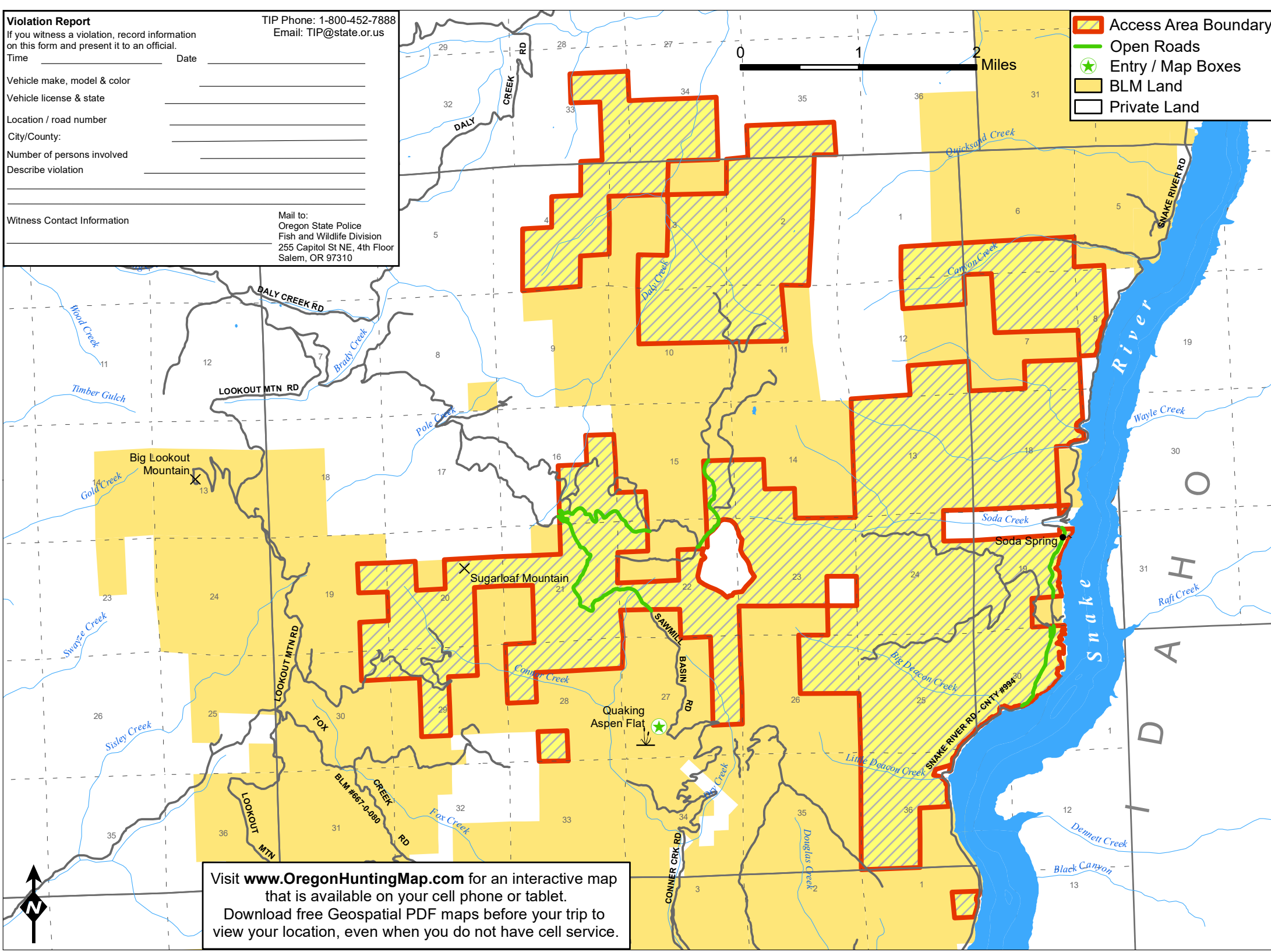
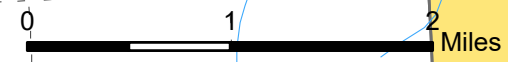
Describe violation \_\_\_\_\_

Witness Contact Information \_\_\_\_\_

Mail to:  
 Oregon State Police  
 Fish and Wildlife Division  
 255 Capitol St NE, 4th Floor  
 Salem, OR 97310

**Legend**

- Access Area Boundary
- Open Roads
- Entry / Map Boxes
- BLM Land
- Private Land



Visit [www.OregonHuntingMap.com](http://www.OregonHuntingMap.com) for an interactive map that is available on your cell phone or tablet. Download free Geospatial PDF maps before your trip to view your location, even when you do not have cell service.

# Forsea Ranch Access Area



The Forsea Ranch Access Area is a cooperative program between a private landowner and the Oregon Department of Fish and Wildlife Access and Habitat Program to maintain public hunting access on private lands and increase access to public land. The Forsea Ranch Access Area south of Richland, OR provides public hunting opportunities for deer, elk, bighorn sheep, predators, chukar, Hungarian partridge, forest grouse, and quail. All Oregon Department of Fish and Wildlife Regulations and Seasons Apply.

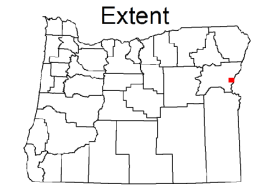
**Access Allowed:  
Year Round**

No permission is required to hunt on the Forsea Ranch Access Area. The area is mostly surrounded by public land, however you are responsible for knowing property boundaries. Do Not Trespass on surrounding private lands.

Hunting on private lands is a privilege, not a right. Private land hunting opportunities will remain in the future only if the property and rights of private landowners are respected! Abuse it and you will lose it!

**Area Regulations:**

- Motorized vehicles only on open roads
- No camping or night-time use of private land
- No fires, be careful with cigarettes
- No littering, pick up any trash
- Report unlawful activities
- Respect landowners' rights and needs
- Leave all gates as you found them
- Do not damage roads during wet conditions



\*This product is for informational purposes and may not have been prepared for, or be suitable for legal, engineering, or surveying purposes. Users of this information should review or consult primary data and information sources to ascertain the usability of the information.