

# Virtue Flat Access Area



**Violation Report**  
 If you witness a violation, record information on this form and present it to an official.

Time \_\_\_\_\_ Date \_\_\_\_\_

Vehicle make, model & color \_\_\_\_\_

Vehicle license & state \_\_\_\_\_

Location / road number \_\_\_\_\_

City/County: \_\_\_\_\_

Number of persons involved \_\_\_\_\_

Describe violation \_\_\_\_\_

---

Witness Contact Information \_\_\_\_\_

Mail to:  
 Oregon State Police  
 Fish and Wildlife Division  
 255 Capitol St NE, 4th Floor  
 Salem, OR 97310

TIP Phone: 1-800-452-7888  
 Email: TIP@state.or.us

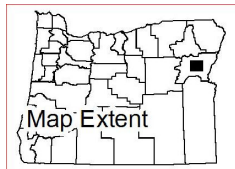
The Virtue Flat Access Area is a cooperative program between a private landowner and the Oregon Department of Fish and Wildlife's Access and Habitat Program to maintain public hunting access on private lands and to increase access to public lands. The Virtue Flat Access Area, 4.5 miles east of Baker City, OR, provides public hunting opportunities for deer, elk, pronghorn antelope, predators, Hungarian partridge, forest grouse, and quail. All Oregon Department of Fish and Wildlife Regulations and Seasons Apply.

### Access Allowed: In Effect Year Round

Hunting on Private Land is a privilege, not a right. Private land hunting opportunities will remain in the future only if the property and rights of private landowners are respected! Abuse it and you will lose it!

### Area Regulations:

- Motorized vehicles only on open roads
- No camping or night-time use of private lands
- No fires, be careful with cigarettes
- No littering, please pick up trash
- Report any unlawful activities
- Respect landowner rights and needs
- Leave all gates as you found them

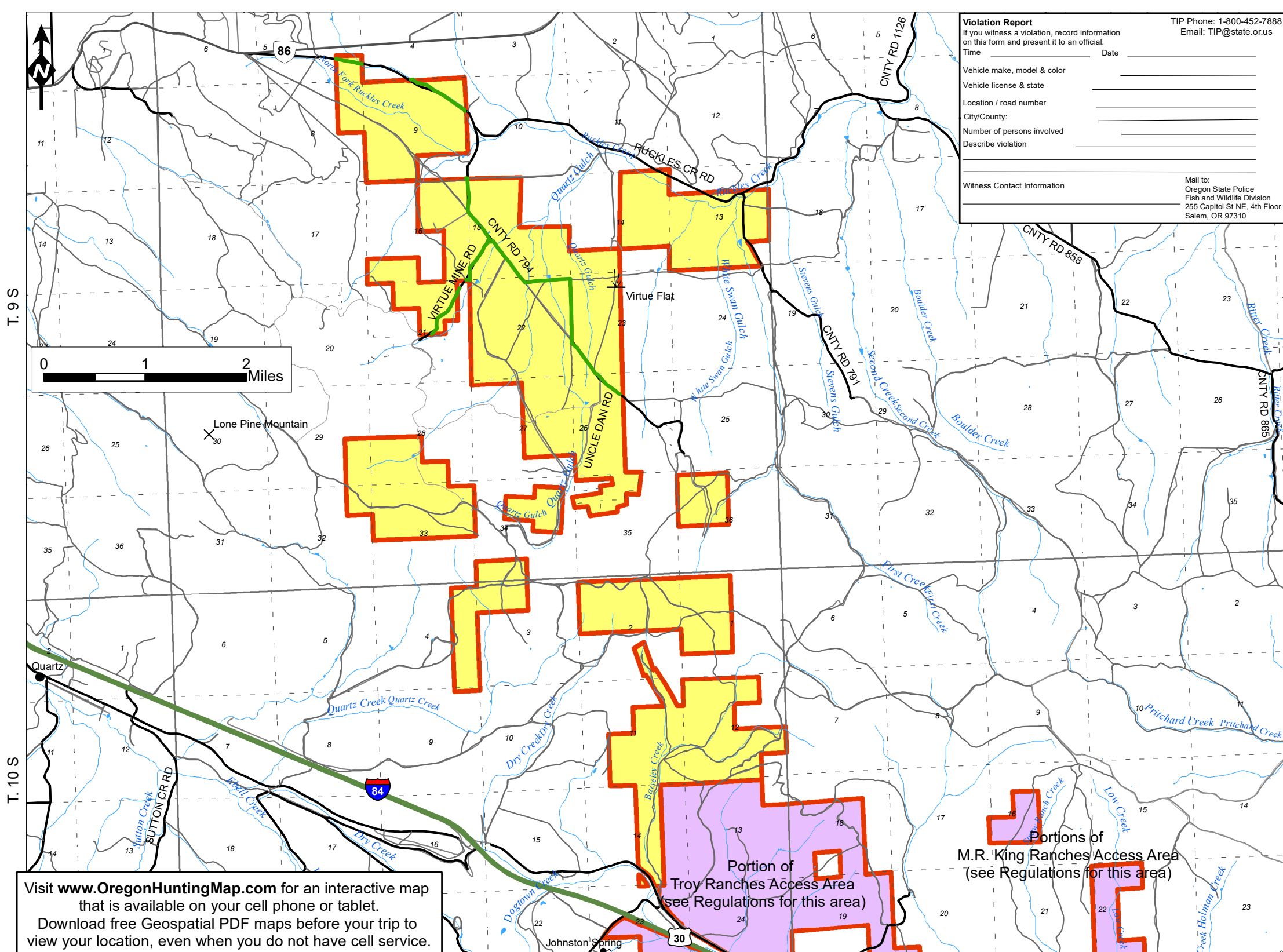


- Access Area Boundary
- Open Access Road
- Other Access Area Boundaries
- US BLM Land
- Other Private Land



SPONSORED BY  
 Oregon Hunter's Association  
 and Leupold-Stevens, Inc.  
 In Cooperation with Oregon State Police  
 and Oregon Dept. of Fish and Wildlife  
**REPORT WILDLIFE VIOLATIONS**  
**1-800-452-7888**

\*This product is for informational purposes and may not have been prepared for, or be suitable for legal, engineering, or surveying purposes. Users of this information should review or consult primary data and information sources to ascertain the usability of the information.



T. 9 S

T. 10 S

R. 40 E

R. 41 E

R. 42 E

Visit [www.OregonHuntingMap.com](http://www.OregonHuntingMap.com) for an interactive map that is available on your cell phone or tablet. Download free Geospatial PDF maps before your trip to view your location, even when you do not have cell service.

Portion of Troy Ranches Access Area (see Regulations for this area)

Portions of M.R. King Ranches Access Area (see Regulations for this area)