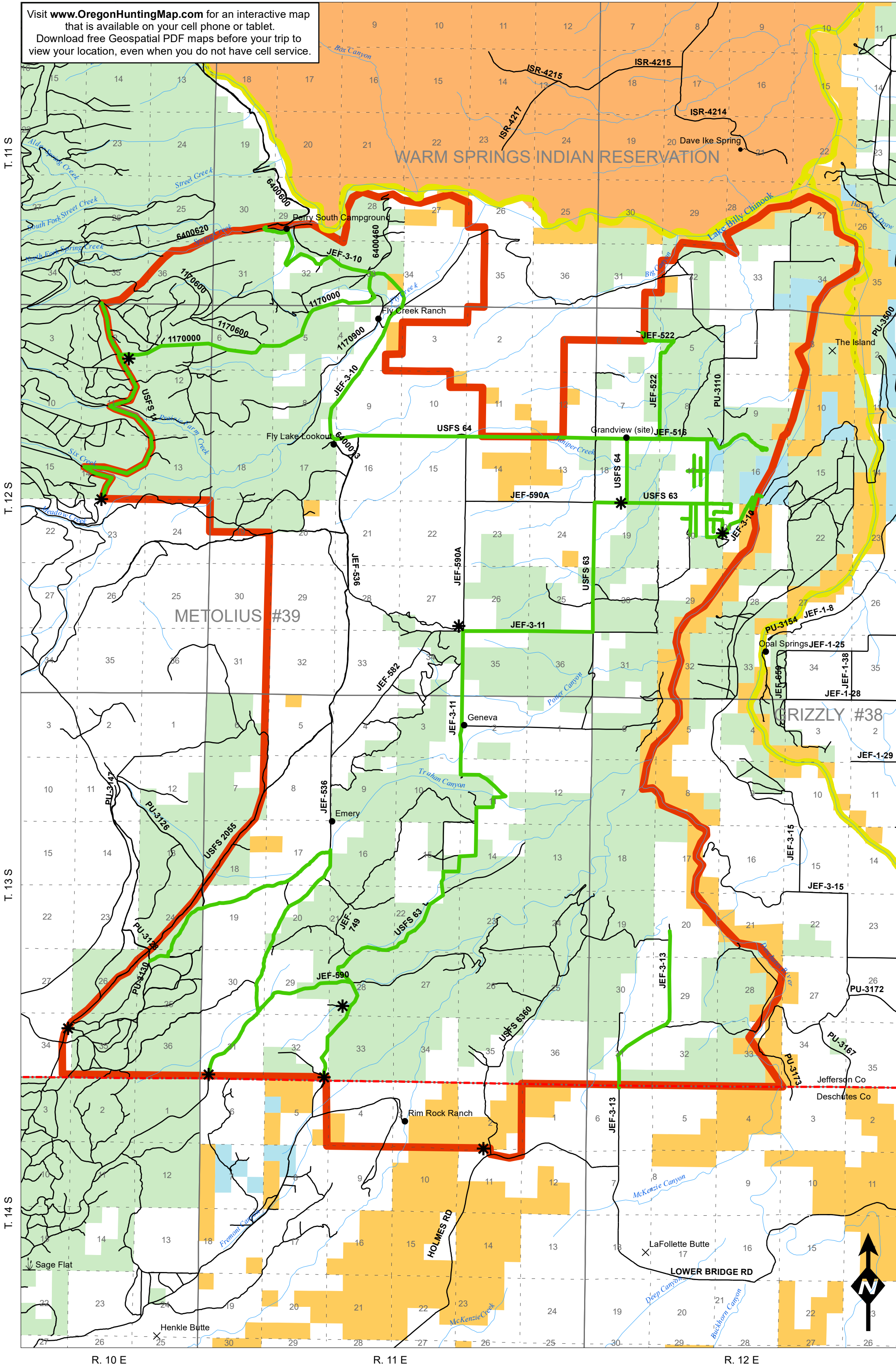


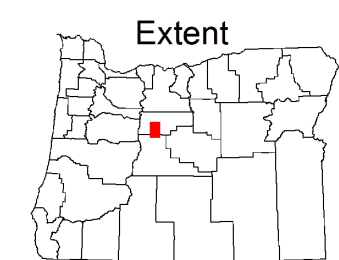
Visit www.OregonHuntingMap.com for an interactive map that is available on your cell phone or tablet. Download free Geospatial PDF maps before your trip to view your location, even when you do not have cell service.

Violation Report
 If you witness a violation, record information on this form and present it to an official.
 Time _____ Date _____
 Vehicle make, model & color _____
 Vehicle license & state _____
 Location / road number _____
 City/County: _____
 Number of persons involved _____
 Describe violation _____

 Witness Contact Information _____
 Mail to: Oregon State Police
 Fish and Wildlife Division
 255 Capitol St NE, 4th Floor
 Salem, OR 97310



- * Informational Signs
- Travel Management Area
- Open Roads
- County Line
- Wildlife Mgmt. Unit
- Warm Sprs Tribal Land
- USFS Land
- BLM Land
- State Land
- Private Land



*This product is for informational purposes and may not have been prepared for, or be suitable for legal, engineering, or surveying purposes. Users of this information should review or consult primary data and information sources to ascertain the usability of the information.

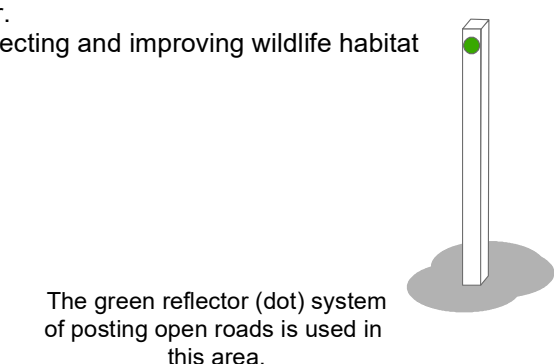


Winter Range Cooperative Closure
 US Forest Service
 Private Landowners
 Jefferson County
 Oregon State Police
 & Oregon Department of Fish and Wildlife

Roads not highlighted in green are closed to all unauthorized motorized vehicle travel from December 1st through March 31st.

- Open roads are symbolized by green lines on this map.
1. Private landowners and their employees are permitted access to their lands.
 2. Federal, State and County employees are permitted entry to perform official duties
 3. Special permits may be obtained for legitimate reasons, contact ODFW.

- Objectives of Closure
 Protect wintering deer and other wildlife from harassment and to protect wildlife habitat by controlling vehicle use, thereby:
1. Increasing deer survival during the winter
 2. Improving the physical condition and productivity of deer.
 3. Protecting and improving wildlife habitat



The green reflector (dot) system of posting open roads is used in this area.