



Unusual Bycatch in the Pink Shrimp Fishery

Northern Spearnose Poacher *Agonopsis emmelane*

- Snout pointed, two spines at tip
- Pelvic fins brown with white edge



Smootheye Poacher *Xeneretmus leiops*

- Three spines at tip of snout
- Black blotch at front of first dorsal fin
- Eye without prominent thorn-like scales



Slim Sculpin *Radulinus asprellus*

- Similar to many poachers, but feels more fleshy
- Small scales above lateral line



Whitebarred Prickleback *Poroclinus rothrocki*

- 10 - 12 white bars with brown/black borders



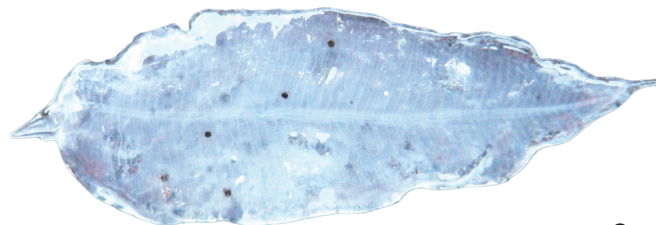
Bluebarred Prickleback *Plehtobranchnus evides*

- Up to 21 bluish bars on back
- 2-3 black spots on rear of dorsal fin



Eel Leptocephalus *Anguilliform species*

- All true eel species have a transparent larval stage
- Ribbon-like or leaf-like, often lack most fins



Lepto = Leaf
Cephalus = Head

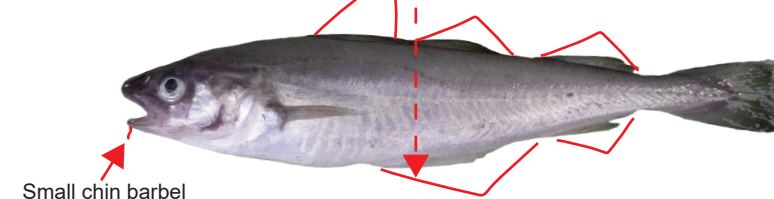
Medusafish *Ichthys lockingtoni*

- Long dorsal and anal fins
- Pelvic fins present (Ragfish looks similar, lacks pelvic fins)



Pacific Tomcod *Microgadus proximus*

- First anal fin begins before second dorsal
- Three dorsal fins



Small chin barbel

Jack Mackerel *Trachurus symmetricus*

- Similar to Pacific Mackerel, but has a high lateral line with scutes



Dwarf Wrymouth *Lyconectes aleutensis*

- Scaleless, red to pink colored
- Tiny black eyes



Mouth nearly vertical

Spotted Cusk-eel *Chilara taylori*

- Dark spots along side, orange around fins/face
- Dorsal and anal fins join caudal fin



Not a true eel

Hatchetfish *Sternoptychidae*

- Deeply compressed, quarter-sized
- Photophores along side of body



Lanternfish *Myctophidae*

- Elongate and moderately compressed
- Photophores along body, below lateral line



There are over 30 species of myctophids

Pacific Argentine *Argentina sialis*

- Small mouth, large eye
- Adipose fin present. Short dorsal fin



Pacific Saury *Cololabis saira*

- Small mouth, medium-sized eye
- Dorsal fin set far back, before 5-6 finlets



Sandpaper skate *Bathyraja kincaidii*

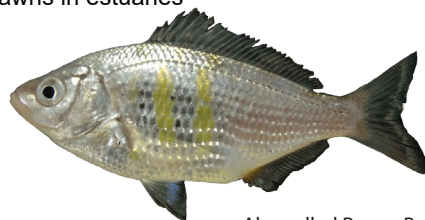
- Adult skates are excluded by BRDs
- Skates hatch from egg cases, often called "mermaid's purses"



Skate egg case

Shiner Perch *Cyprinogaster aggregata*

- Three vertical yellow bars below lateral line
- Spawns in estuaries



Also called Poggy Perch

Threadfin Sculpin *Icelinus filamentosus*

- First and second dorsal spines long
- Two rows of scales below 3/4 dorsal spine



Longspine Combfish *Zaniolepis latipinnis*

- First and second dorsal spines long
- Scales fine, skin like sandpaper

