



# 2018-2020 Bottomfish (Groundfish)





# Purpose

- Get Public input on recreational bottomfish regulations for 2018 (state) and 2019-2020 (federal)

# Outline

- Brief overview of federal/state process and timelines
- Recent stock assessments
- Season structure, regulations, allocations
- Discussion



# Regulation Development Process

## STATE

- OR Fish & Wildlife Commission sets:
  - OR sport & commercial nearshore harvest guidelines
    - Black rockfish
    - Nearshore rockfish
    - Cabezon
    - Greenling
  - Bag limit, depth limits, seasons (may not be more liberal than federal regs)
- Annual cycle
  - Input now for 2018
  - OFWC final decision in December, 2017

## FEDERAL

- Pacific Fishery Mgt. Council sets:
  - Annual Catch Limit (ACL), for each stock, based on assessments
  - Area/sector-based limits, e.g., yelloweye & canary
  - Bag limit, depth limits, seasons, etc.
- 2 year cycle
  - Input for 2019-2020
  - PFMC final decision in June, 2018



# Stock Assessments Conducted in 2017

- Species important to OR sport fisheries:
  - Yelloweye rockfish
  - Lingcod
  - Blue/Deacon rockfish
  - Yellowtail rockfish

## Good news:

- Three species declared “rebuilt” from overfished status (i.e., now at/above target of 40% of unfished biomass)
  - Darkblotched RF, bocaccio, Pacific ocean perch
- NO new overfished species



# Yelloweye rockfish

- Now estimated to be at 28.3% of unfished biomass, up from 21.4% in 2011
- Rebuilding date—TBD (was 2053 in last assessment; will be updated in Sept.)
- Coastwide ACL also TBD; expected to be a bit higher than 2017 and 2018 ACL =20 mt
- OR recreational share
  - 3.0 mt in 2017/2018
  - 2019/2020– TBD
  - Will continue as most constraining stock in OR rec. bottomfish fishery





# Lingcod

- Depletion is  $\sim 60\%$  of unfished biomass
  - “healthy”
- $\sim 30\%$  ACL attainment in recent years
  - ACL = 2800-3000 mt
    - Catches from all fisheries combined =  $\sim 800$  mt
  - Yelloweye bycatch limits access
- OR recreational regulations
  - 2 fish daily bag limit
  - 22 inch minimum size limit





# Blue/Deacon Rockfish

- Assessed for first time since 2007
  - Assessment review panel occurring 24-28 July
- Part of the Nearshore Rockfish Complex with copper, quillback, China, grass and brown rockfish
  - 2018 complex ACL, N of 40° 10' N lat. = 105 mt
  - OR rec share = 36.8 mt
- 2019-2020 ACL and HG- TBD





# Yellowtail Rockfish

- New full assessment
- Biomass estimated to be 65% of unfished
- ~30% ACL attainment in recent years
  - ACL = 4,000-6,000 mt
    - Catches from all fisheries combined = ~1,800 mt
- Canary RF was found to be rebuilt in 2015 assessment; higher ACLs will allow additional yellowtail RF access





# State Management Goals

- Strive for year-round fishing opportunities
  - Angler input has consistently supported this
- As much harvest opportunity as possible
  - Can lead to more complex bag limit or season structure
- Minimize bycatch impacts
  - e.g. new descending device requirement
- Fair and equitable distribution of impacts
  - E.g. new allowance for inseason changes to all-depth halibut fishery, not just bottomfish fishery, based on yelloweye impact



# 2017 Season Structure & Regulations

- Seasonal depth restrictions
  - Designed to reduce interactions with and mortality of yelloweye rockfish
  - Restricted to inside of 30 fm April-September
- Limited bottomfish retention on all-depth halibut days
- Mandatory descending devices
- Length limits
  - Lingcod-22 inches
  - Cabezon—16 inches



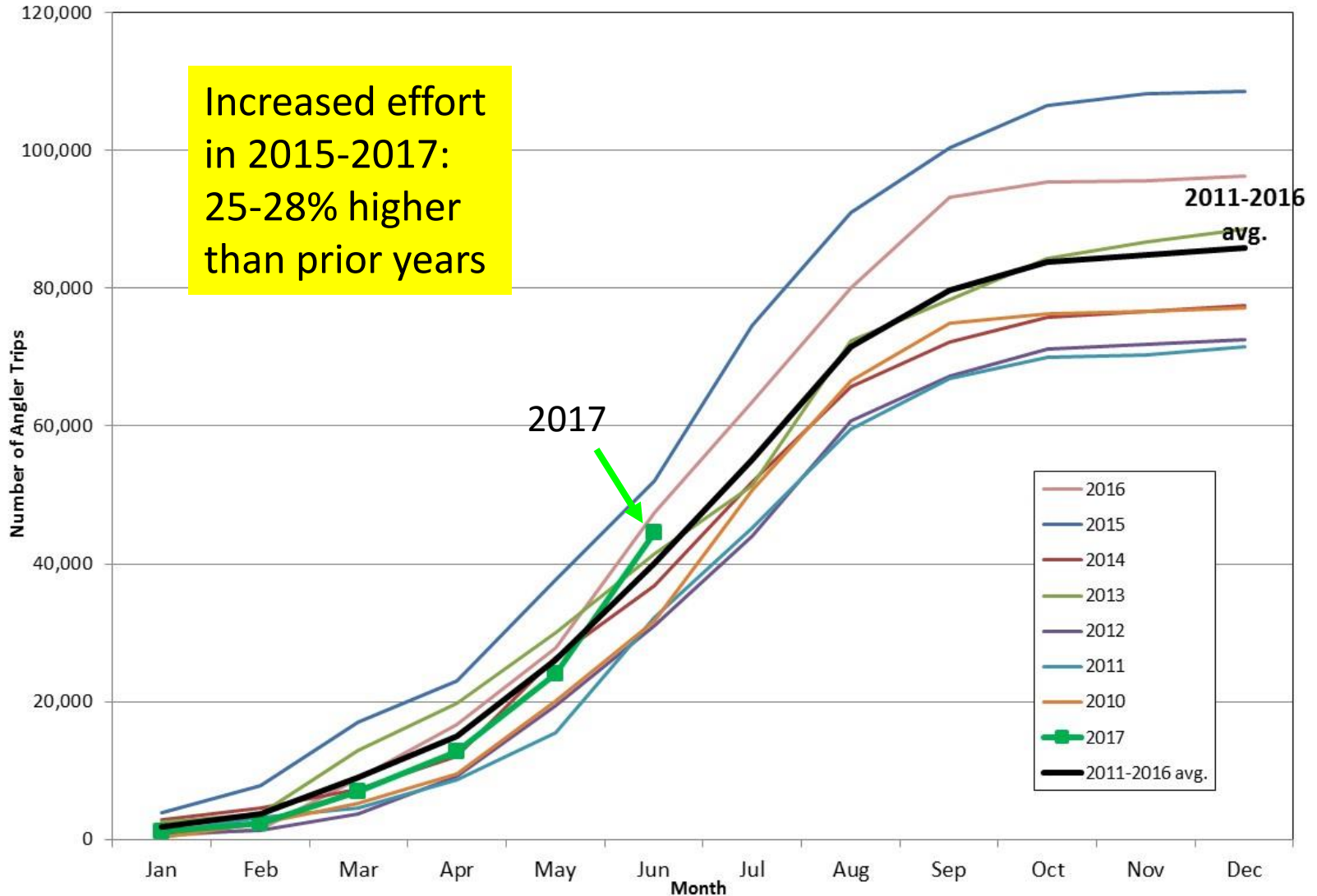
# 2017 Season Structure & Regulations (continued)

- Bag limits
  - 7 marine fish (rockfish, greenlings, etc.)
    - Sub-bag limits
      - 6 black rockfish
      - 4 blue/deacon, China, copper, quillback, combined
      - 1 cabezon (July 1-Dec 31)
    - 2 lingcod
    - 25 flatfish (other than Pacific halibut)



# 2017 Season Progress

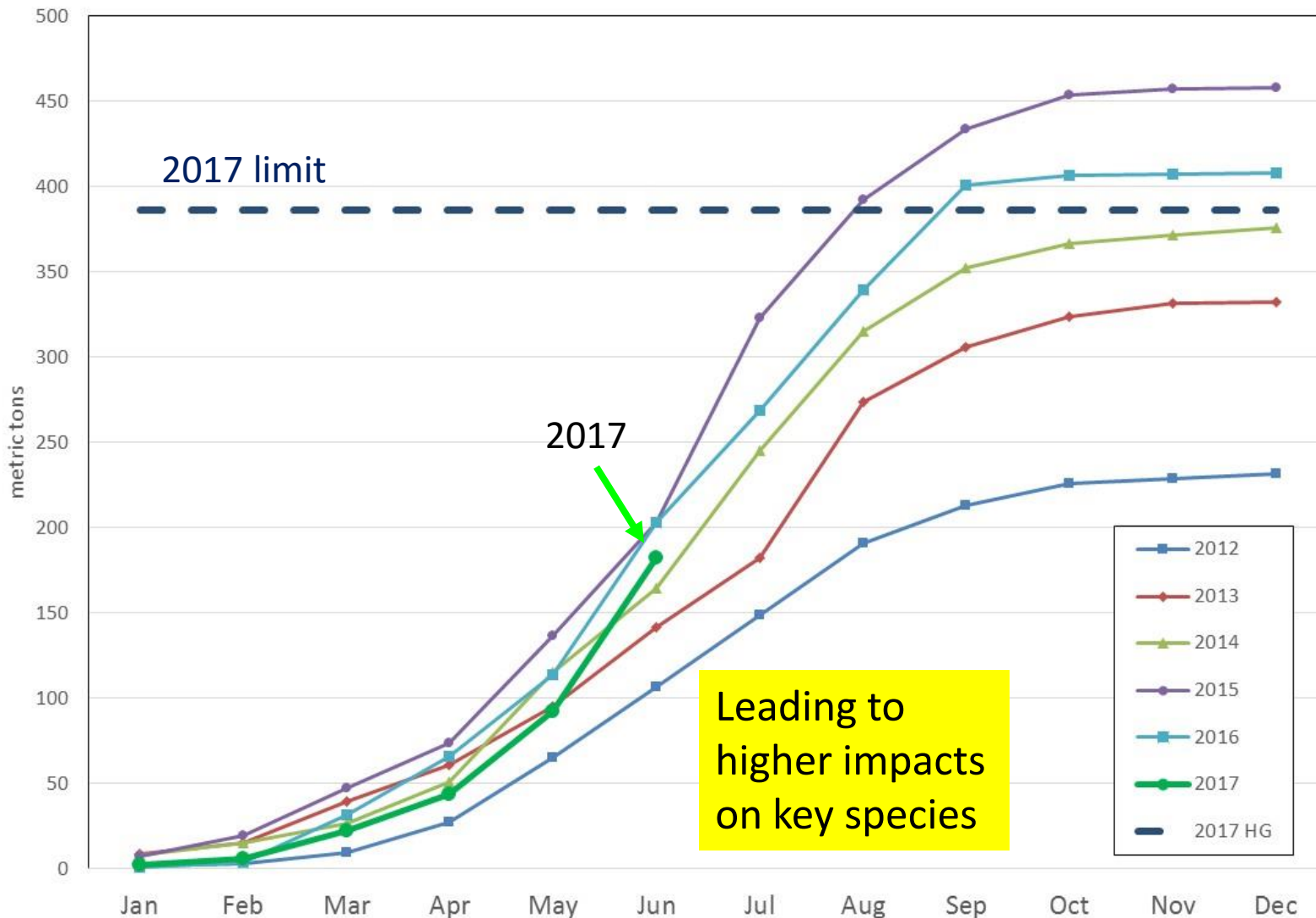
## Cumulative Bottomfish Angler Trips by Month, 2012-2017





# 2017 Season Progress

Cumulative Black Rockfish Impacts by Month (mt), 2012-2017, with 2017 HG



2017 limit

2017

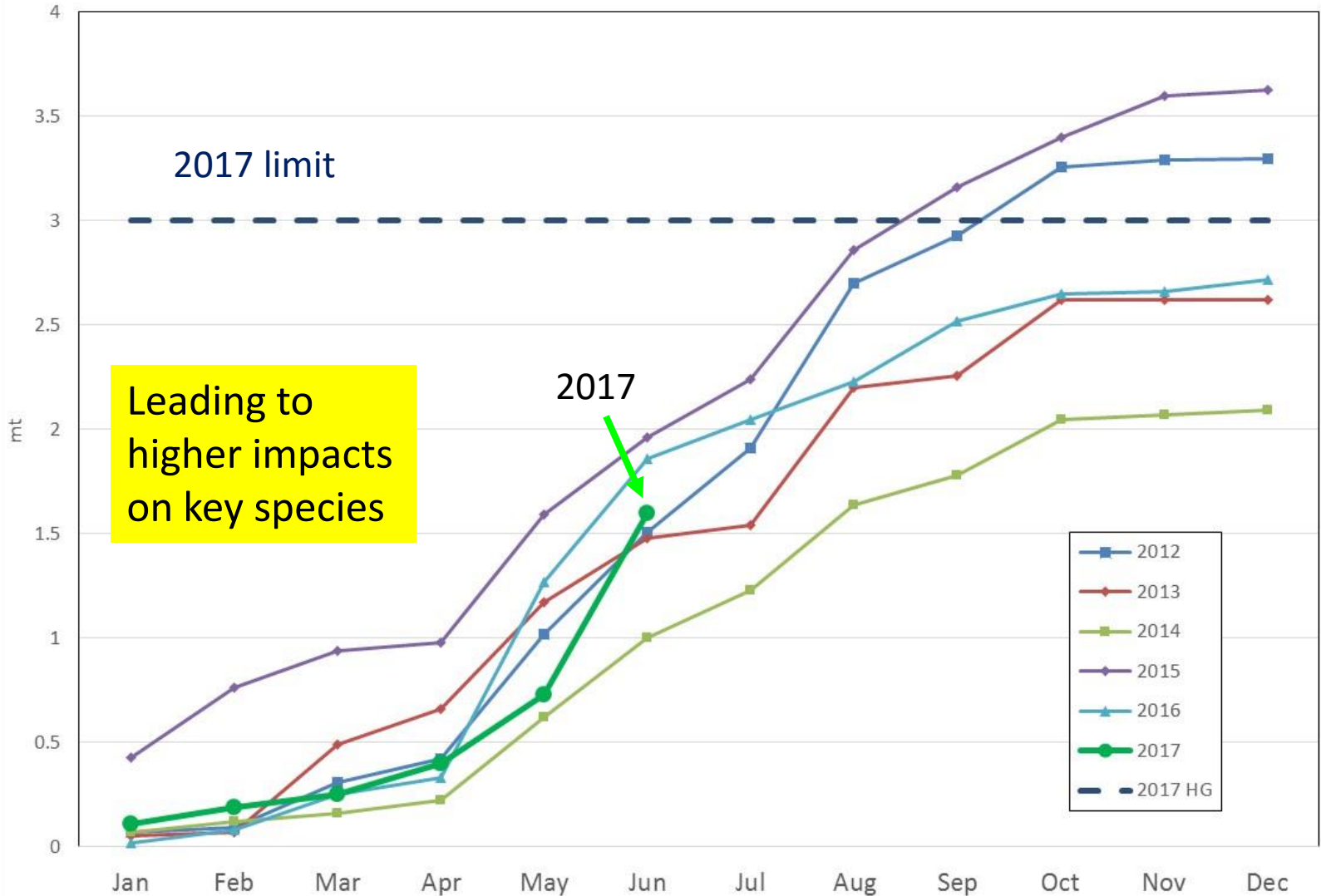
Leading to higher impacts on key species

- 2012
- 2013
- 2014
- 2015
- 2016
- 2017
- 2017 HG



# 2017 Season Progress

Cumulative Yelloweye Rockfish Impacts by Month (mt), 2012-2017, with 2017 HG





# State Process for 2018 Recreational Bottomfish Fishery

- Assume continued high bottomfish effort
- Harvest limits the same as in 2017
- If regulation changes are necessary to stay under harvest limits,
  - Which management measures are preferred?
    - Depth restrictions (helps limit yelloweye)
    - Reduce bag limit (helps limit black or nearshore rockfish)
    - Others (e.g., season restrictions)
    - Not either/or, can be a combination
- Staff will make recommendations to OFWC in December 2017



# Federal Process for 2019-2020 Bottomfish Fishery

- Oregon Recreational Harvest Limits
  - No change expected from 2017-2018 for:
    - Black rockfish
    - Cabezon
    - Greenlings
  - Canary rockfish—TBD, but should not be limiting
  - Yelloweye rockfish—TBD, potential small increase
  - Nearshore rockfish—TBD, will depend on outcome of blue/deacon assessment



# 2019-2020 Bottomfish Fishery

- Continue to aim for year round fishing opportunities?
- Yelloweye rockfish will continue to be most restrictive species
  - Season structure and regulations primarily designed around limiting impacts to yelloweye
- May also need to reduce impacts to black rockfish and/or nearshore rockfish species



# 2019-2020 Bottomfish Fishery

- If receive additional yelloweye RF, what should we look at?
- What about limiting black rockfish?
- Nearshore rockfish?



# Process Moving Forward

- Sept Council meeting
  - 2019-2020 ACLs set
  - May get preliminary estimated OR recreational shares
  - Start developing management measures
- Nov Council meeting
  - Continue to work on management measures
- Dec OFWC meeting
  - Set 2018 state regulations
- April/June Council meetings
  - Finalize allocations
  - Finalize management measures



# Discussion