



2019 Recreational Bottomfish (Groundfish)





Purpose

- Discuss options for the 2019 state recreational bottomfish season
 - Oregon Fish & Wildlife Commission will finalize at their Dec. 7 meeting

Outline

- Brief overview of federal/state process and timelines
- Recent stock assessments
- Allocations, season structure, regulations
- Discussion about 2019 season



Federal & State Process & Timelines for 2019



Federal Process*

2017

Stock assessments

Total catch limits set

Sector-specific allocations set

Allocations, seasons, management changes finalized

Season structure & management changes developed & analyzed

2019-2020 Federal Regulations Published

2018

2019

State Process

Public input: Potential management changes

Season structure & management changes developed & analyzed

Public input: season structure & management changes

Rec & Comm. allocation percentages determined**

Commission finalizes 2019 season

We are at this step



* ODFW staff participate all through the federal process

**Black rockfish, blue/deacon rockfish, nearshore rockfish complex species, cabezon, kelp greenling



Stock Assessments Conducted in 2017

Good news:

- Three species declared “rebuilt” from overfished status
 - Darkblotched RF, bocaccio, Pacific ocean perch
- NO new overfished species
- Yelloweye RF rebuilding more quickly than shown in previous assessments



Yelloweye rockfish

- Now estimated to be at 28.3% of unfished biomass,
 - up from 21.4% in 2011
 - target is 40%
- Rebuilding date—2029
 - 2053 in last assessment
- 2019 Coastwide ACL = 49 mt;
 - however managing to 39 mt, ~10 mt buffer
 - Still 2x higher than 2018 (20 mt)
- OR recreational share
 - 7.0 mt in 2019; 7.2 mt in 2020 (3.0 mt in 2018)
 - No longer the *most* constraining stock for OR recreational bottomfish fishery





Blue/Deacon Rockfish

- Assessed for first time since 2007
 - Estimated to be at 69% of unfished biomass
 - Stock more productive than previous assessment indicated
- 2018 ACL contribution was 26.9 mt
 - OR & WA combined
- 2019 ACL contribution will be 101.5 mt
 - OR only
 - 2020 = 98.4 mt





Stock Complexes

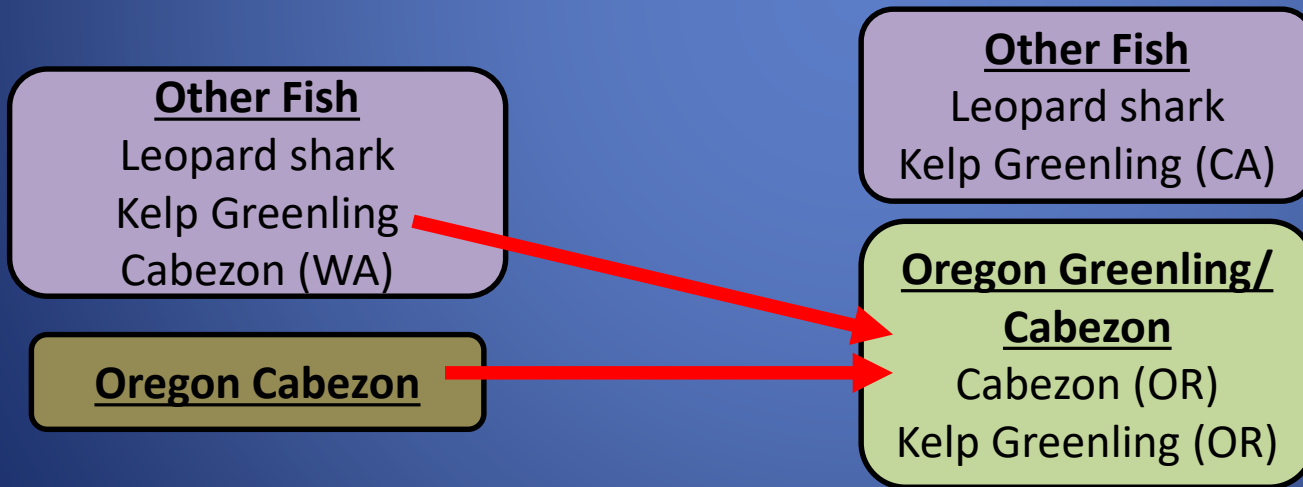
- Based on new assessments & input from public
 - Blue/deacon rockfish have been removed from the Nearshore Rockfish Complex
 - Added to black rockfish to create new black/blue/deacon RF Complex





Stock Complexes, cont.

- Kelp greenling (OR) removed from Other Fish Complex
 - Added to cabezon to create new Oregon cabezon/greenling complex





Stock Complexes, cont.

- So, what does that mean?
 - Still need to manage toward the species-specific contributions to the complexes
 - E.g. 516 mt black RF and 101.5 mt blue/deacon RF
 - Cannot have all 617 mt be black RF, or blue/deacon RF
 - Does provide a little bit of flexibility
 - Can go over a little bit one year
 - But cannot set up seasons projecting to go over

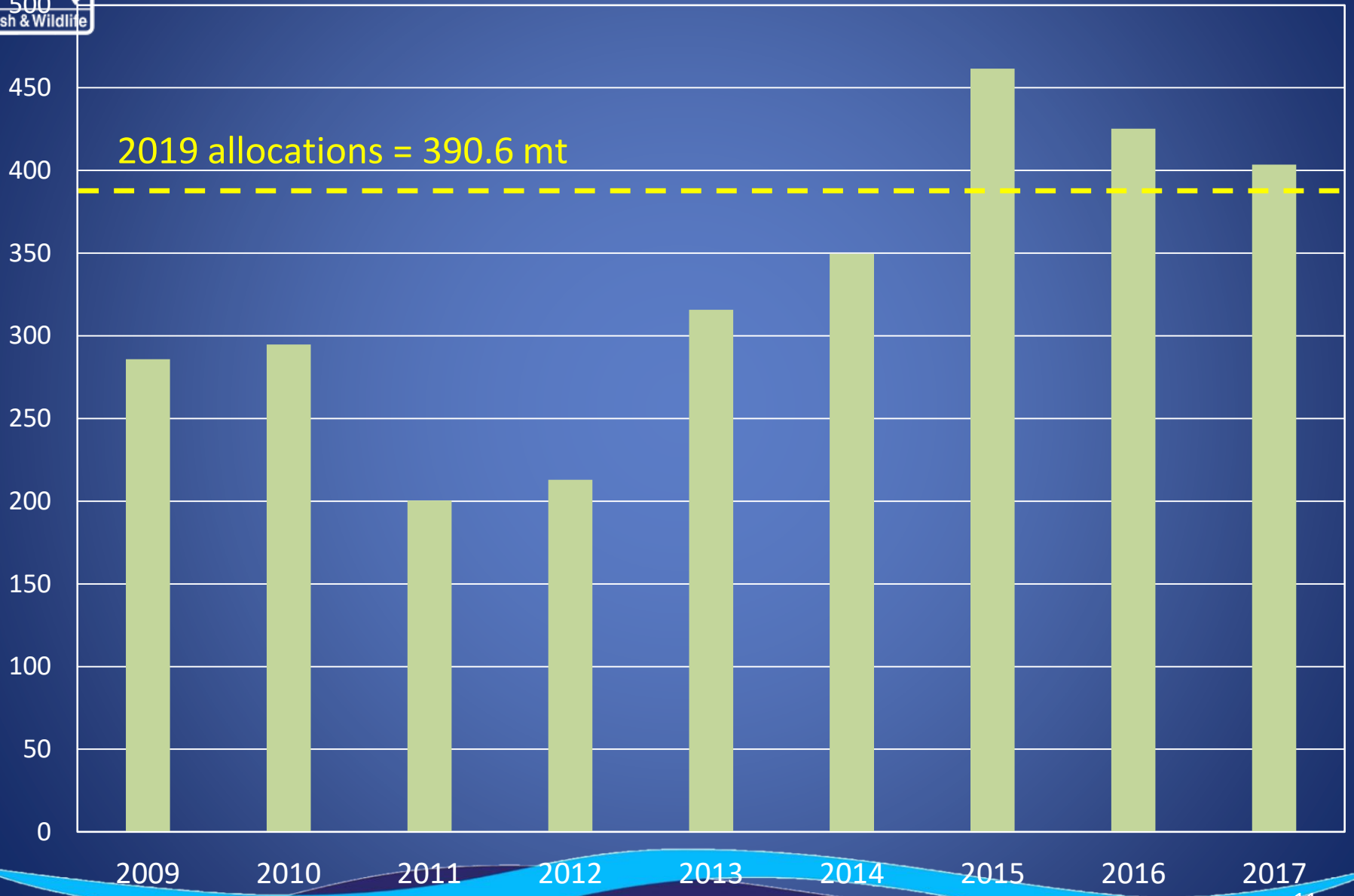


OR Recreational Allocations (in mt)

Species	2018 Allocation	2019 Allocation	2020 Allocation
Black Rockfish	395.2	390.6	387.6
Blue/Deacon Rockfish	28.9	81.8	80.3
Other Nearshore Rockfish		11.3	11.2
Canary Rockfish	75.0	70.9	66.7
Yelloweye Rockfish	3.0	7.0	7.2
Cabazon	16.8	16.8	16.8
Greenlings	50.2	46.5	44



Black Rockfish Catch (in mt) 2009-2017, with 2019 allocation





State Management Goals

- Strive for year-round fishing opportunities
 - Majority of angler input has consistently supported this
- As much harvest opportunity as possible
 - Can lead to more complex bag limit or season structure
- Minimize bycatch impacts
 - e.g. new descending device requirement



2018 Season Structure & Regulations

- Seasonal depth restrictions
 - Designed to reduce interactions with and mortality of yelloweye rockfish
 - Restricted to inside of 30 fm April-September
- Limited bottomfish retention on all-depth halibut days
- Mandatory descending devices
- Length limits
 - Lingcod-22 inches
 - Cabezon—16 inches



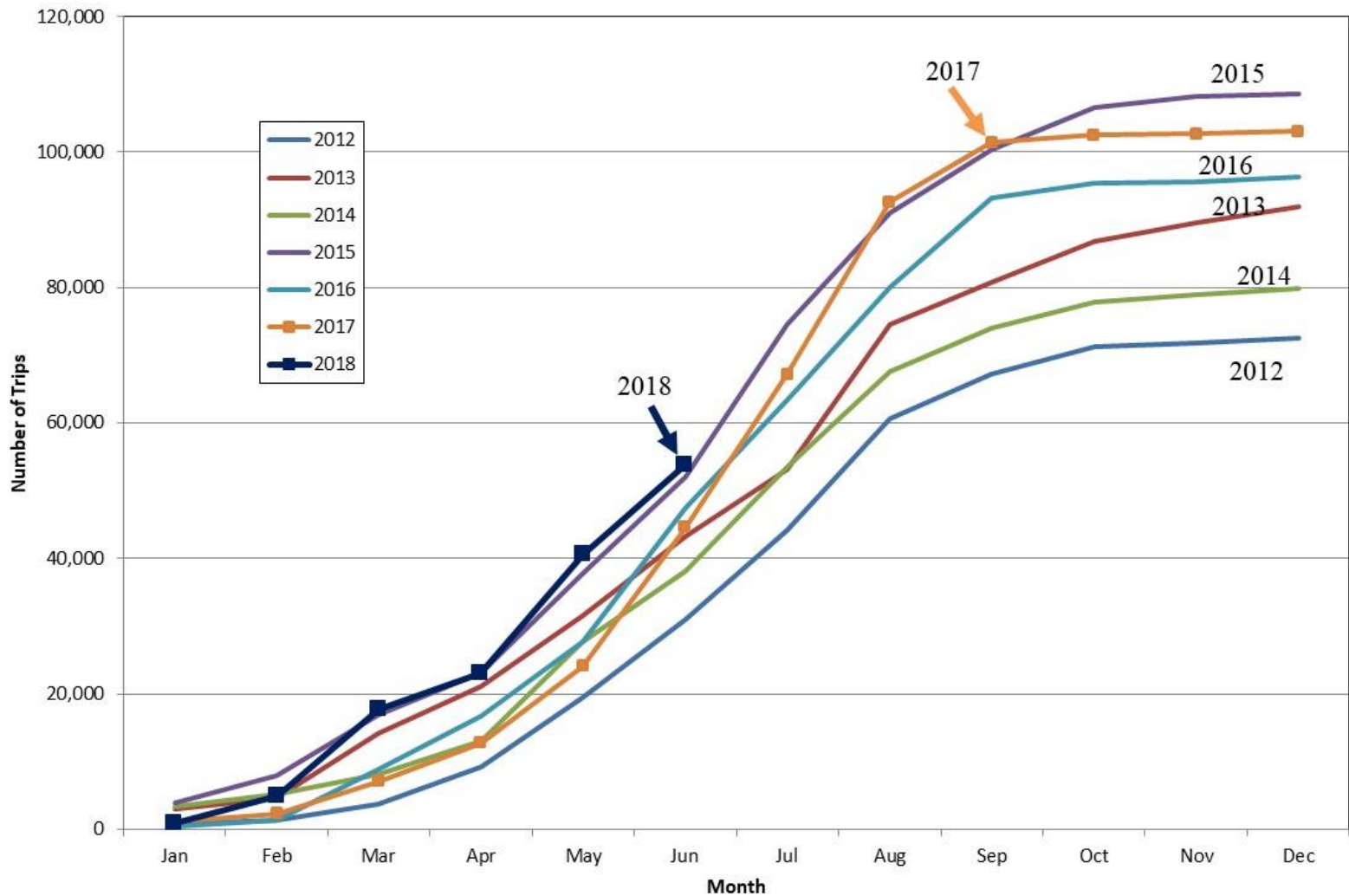
2018 Season Structure & Regulations (continued)

- Bag limits
 - 5 marine fish (rockfish, greenlings, etc.)
 - Sub-bag limits
 - 1 cabezon (July 1-Dec 31)
 - Reduced to 4 fish July 1
 - 2 lingcod
 - 25 flatfish (other than Pacific halibut)
 - 10 longleader gear species
 - Only these midwater RF species
 - Yellowtail, widow, canary, redstripe, greenstripe, slivergray, bocaccio & chilipepper RF



2018 Season Progress

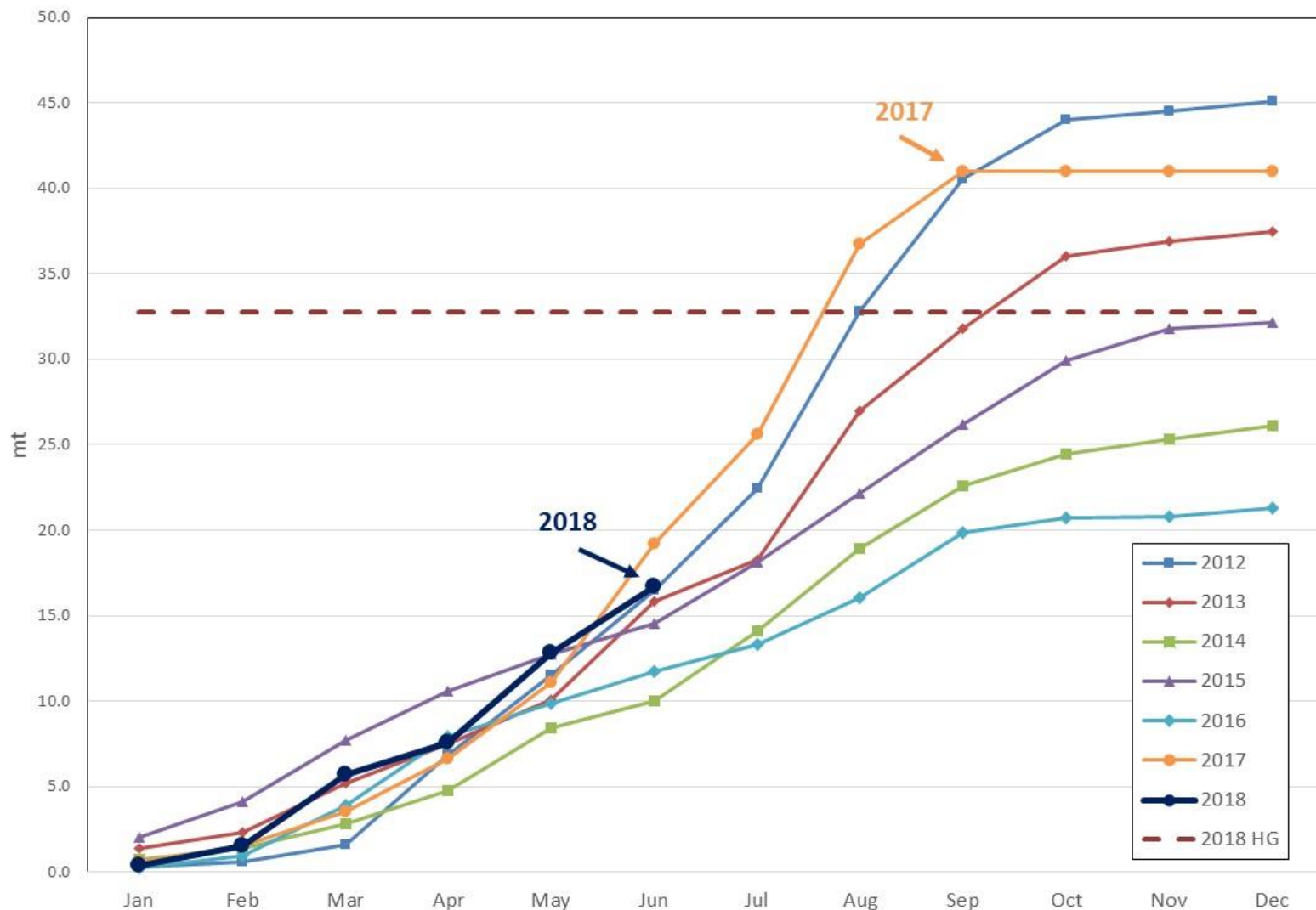
Cumulative Number of Bottomfish Angler Trips by Month, 2012-2018





2018 Season Progress

Cumulative Impacts (in mt) of Nearshore Rockfish Species by Month, 2012-2018, with 2018 Harvest Guideline

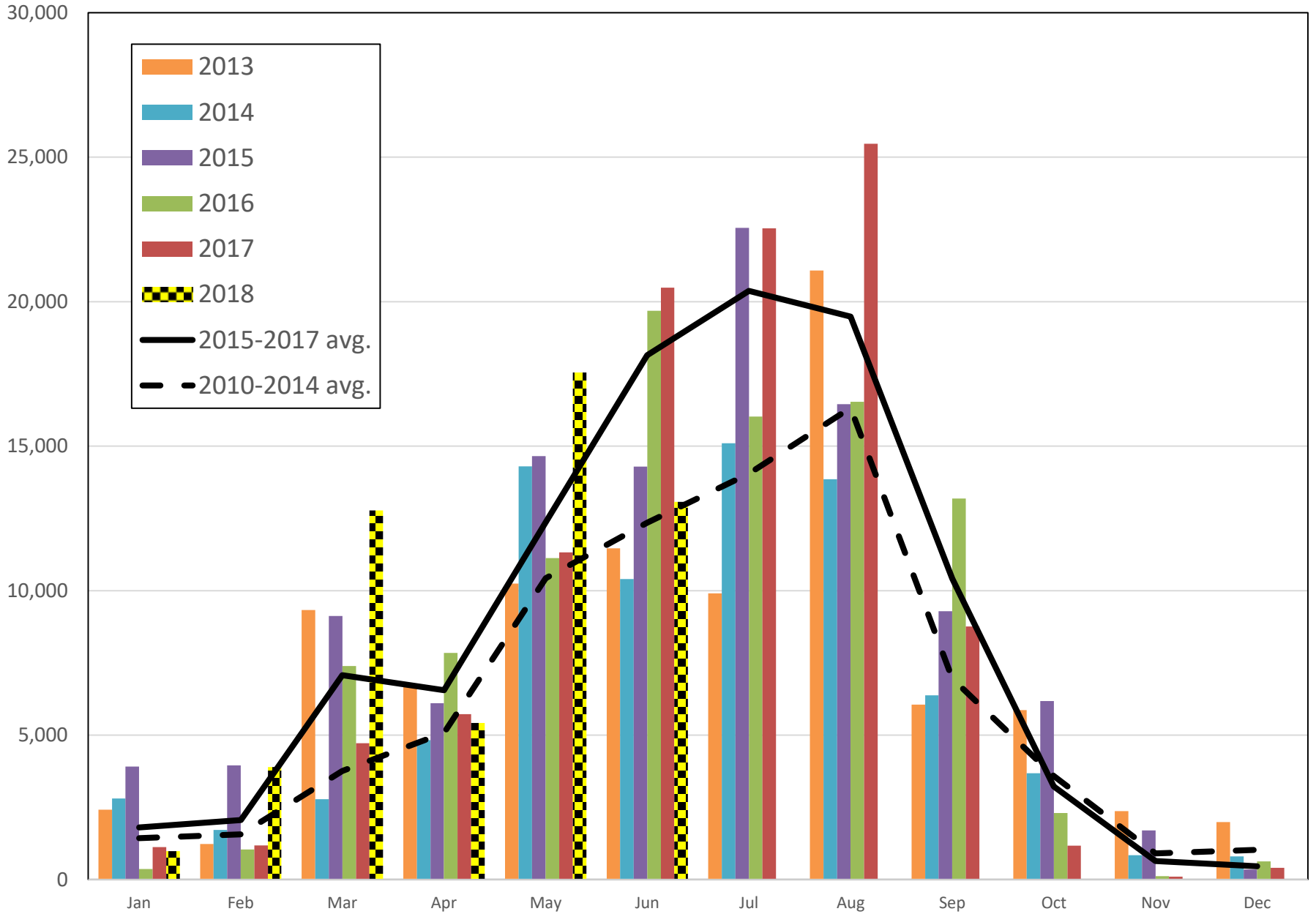




2019 Bottomfish Fishery

- Continue to aim for year round fishing opportunities?
- Assume continued high bottomfish effort?
 - Prior to 2015, annual angler trips averaged less than 80,000
 - Since 2015, lowest year has been 96,000; 2 years over 100,000
 - 2018 through June over 53,000 trips

Monthly Bottomfish Angler Trips, 2013-2018





2019 Bottomfish Fishery

- Additional yelloweye RF will allow seasonal depth restriction to go back to 40 fm
 - Heard from anglers last fall that was priority
 - Opens more areas
 - Consistent regulatory line (longleader, nearshore halibut)
 - Could potentially have fewer months of depth restrictions
 - Want to take precautionary approach
 - Stair step changes
 - Not go all out in the first year



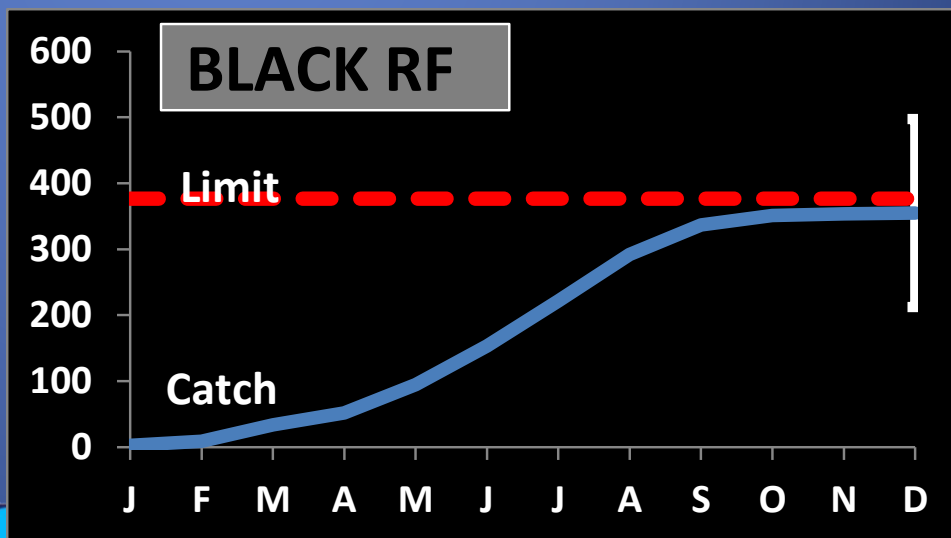
2019 Bottomfish Fishery

- Bag limit
 - Sub-bag limits
 - does not work for black RF,
 - black RF makes up the majority of most bags
 - Sort of works for nearshore RF species
 - Makes regulations complicated
- Length limits
 - Lingcod = 22 inches
 - Cabezon = 16 inches
- Black RF followed by yelloweye RF will drive the season structure
 - Balance impacts to these two species
- Other ideas?



2019 Bottomfish Fishery

- Modeled 150+ season scenarios, so far...
 - Combination of changes to depth restrictions and bag limits
 - **Caveat:** Model produces a point estimate
 - *50% chance of being under that point; 50% chance of being over*





Let's look at some season scenarios

Option	Jan	Feb	Mar	Apr	May	Jun	Jul	Aug	Sep	Oct	Nov	Dec	BRF	BDRF	CAN	YE	NSRF	Kelp G	Cab	BBDRF	Cab/Gr		
2019 Allocations													376.9	80.7	70.9	7.0	11.3	27.1	16.1	457.6	43.2		
SQ	all-depth			< 30 fm				all-depth				410.8	19.9	28.6	3.50	12.8	4.3	22.2	430.7	26.5			
7 fish marine bag limit																							
7-1	all-depth			< 40 fm				all-depth				410.0	19.9	28.6	3.40	12.7	4.3	22.1	429.9	26.4			
6 fish marine bag limit																							
6-1	all-depth			< 40 fm				all-depth				390.9	18.9	27.6	3.20	12.1	4.0	20.8	409.8	24.8			
6-2	all-depth			< 40 fm				all-depth				388.8	18.9	28.1	3.30	12.1	4.0	20.8	407.7	24.8			
6-3	all-depth			< 40 fm				all-depth				385.6	18.8	28.8	3.40	12.1	3.9	20.3	404.4	24.2			
6-4	all-depth			< 40 fm				all-depth				383.5	18.8	29.3	3.50	12.0	3.9	20.3	402.3	24.2			
5 fish marine bag limit																							
5-1	all-depth			< 40 fm				all-depth				361.9	17.5	26.1	2.90	11.2	3.6	18.7	379.4	22.3			
5-2	all-depth			< 40 fm				all-depth				359.9	17.5	26.6	3.00	11.2	3.6	18.7	377.4	22.3			
5-3	all-depth			< 40 fm				all-depth				357.0	17.4	27.2	3.10	11.2	3.5	18.3	374.4	21.8			
5-4	all-depth			< 40 fm				all-depth				355.0	17.4	27.7	3.20	11.1	3.5	18.3	372.4	21.8			
4 fish marine bag																							
4-1	all-depth			< 40 fm				all-depth				302.9	14.7	23.2	2.30	9.4	2.9	15.0	317.6	17.9			
4-2	all-depth			< 40 fm				all-depth				301.3	14.6	23.5	2.40	9.4	2.9	15.0	315.9	17.9			
4-3	all-depth			< 40 fm				all-depth				298.8	14.6	24.1	2.50	9.3	2.8	14.7	313.4	17.5			
4-4	all-depth			< 40 fm				all-depth				297.2	14.5	24.4	2.50	9.3	2.8	14.7	311.7	17.5			

	< 80% of allocation
	> 80% and < allocation
	> allocation



Discussion