



Marine  
Resources

# Public Meeting on the 2021 Recreational Bottomfish Fishery

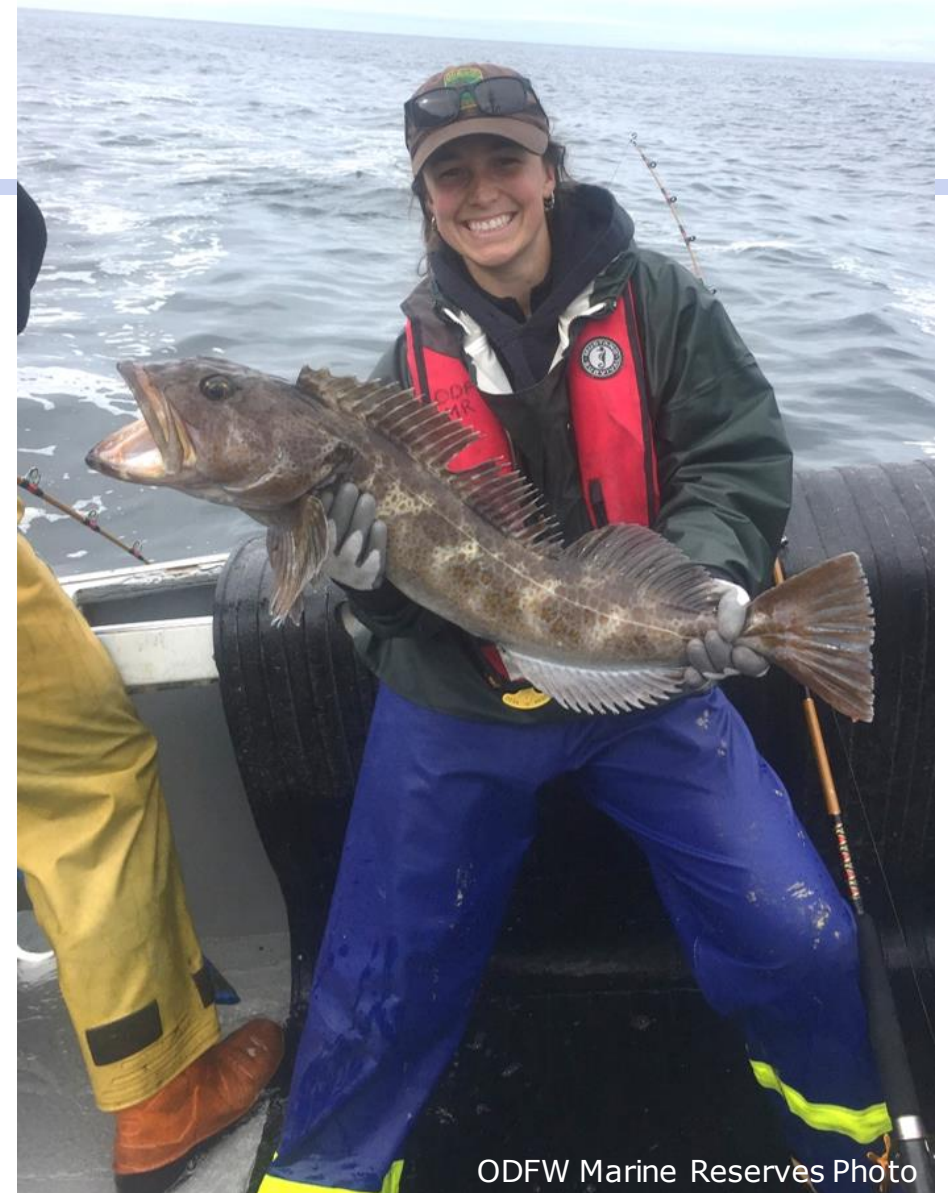
28 July 2020



ODFW Photo

# Meeting Outline

- State Management Goals
- Review 2020 season
- Discussion about 2021
  - Allocations
  - Season structure
  - Regulations



ODFW Marine Reserves Photo



# State Management Goals

- Strive for year-round fishing opportunities
  - Angler input has consistently supported this
- As much harvest opportunity as possible
  - Can lead to more complex bag limit(s) or season structure
- Minimize bycatch impacts
  - E.g. descending device requirements



# Review of 2020 season structure & regulations

- Seasonal depth restrictions reduced (40-fm Jun-Aug)
  - Designed to reduce interactions with, and mortality of, yelloweye rockfish
  - Down from 6 months to 3 months
- Limited bottomfish retention on all-depth halibut days (yelloweye rockfish bycatch)
- Mandatory descending devices
- Length limits
  - Lingcod-22 inches
  - Cabezon-16 inches



# Review of 2020 season structure & regulations

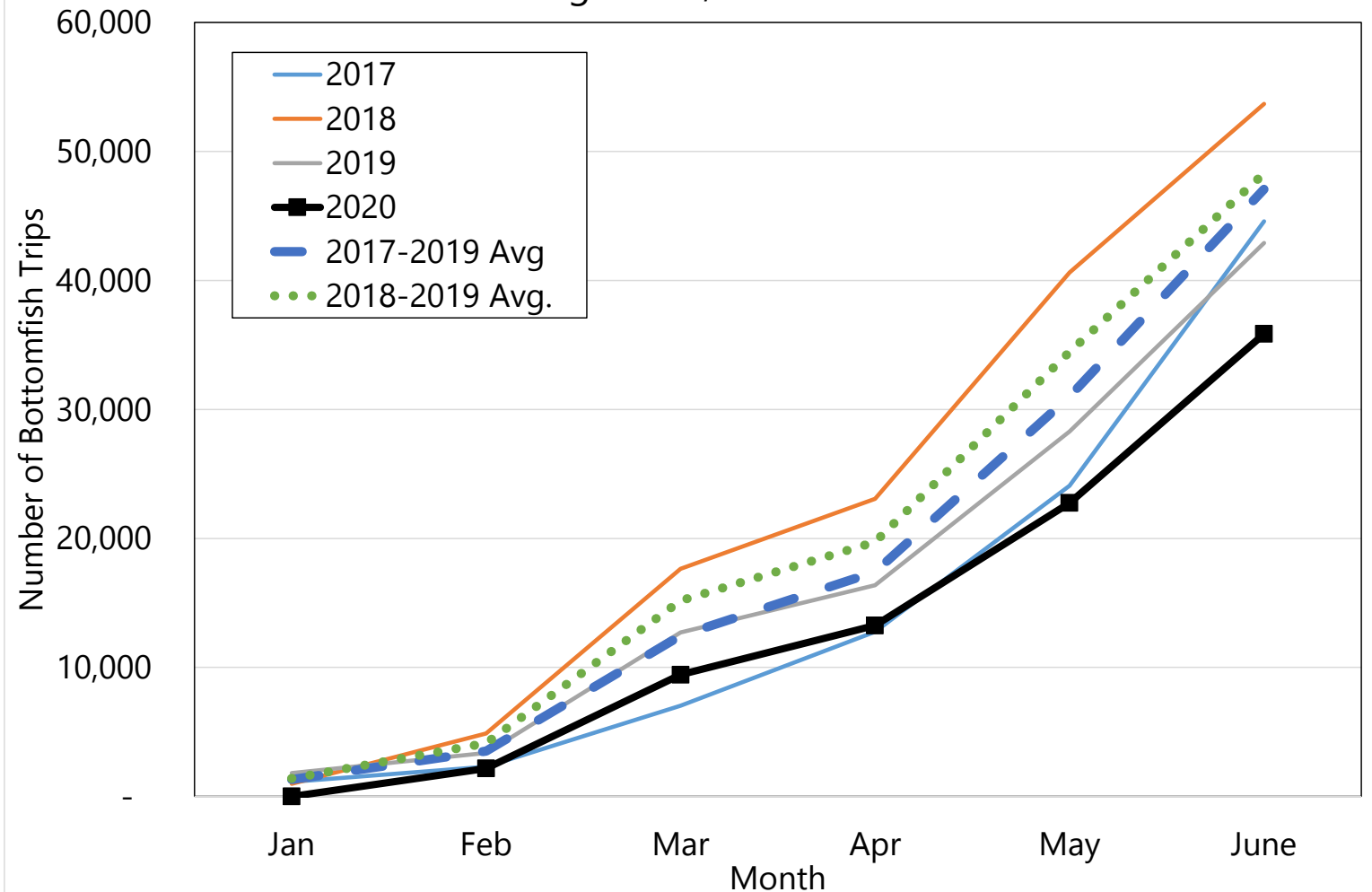
- Bag limits
  - 5 marine fish to start the year
    - Increased to 7 fish beginning July 20, due to quota available for many species
    - Sub-bag limits
      - 1 China, copper, or quillback rockfish
        - non-retention beginning on July 20, due to quota attainment
      - 1 cabezon (July 1 until quota caught)
  - 2 lingcod
  - 25 flatfish (other than P. halibut)
  - 10 longleader gear fish (10 species)



# 2020 Season Progress

- No effort in January due to ocean conditions
- High effort in early March
- Mid-March COVID restrictions/ impacts began, in some ports
- by Mid-May most ports and businesses re-open

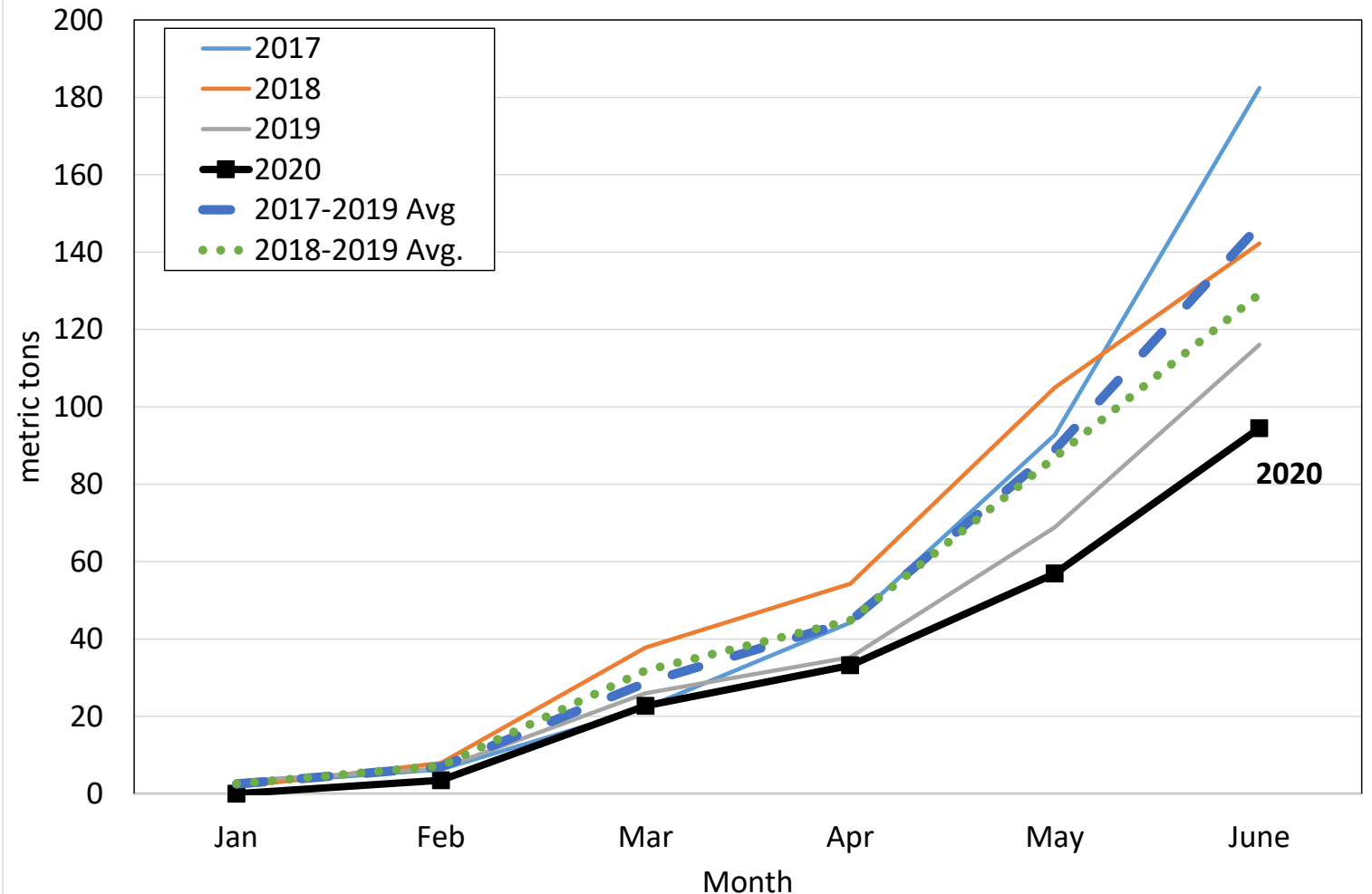
Cumulative Monthly Number of Bottomfish Angler Trips, through June, 2017-2020



# 2020 Season Progress

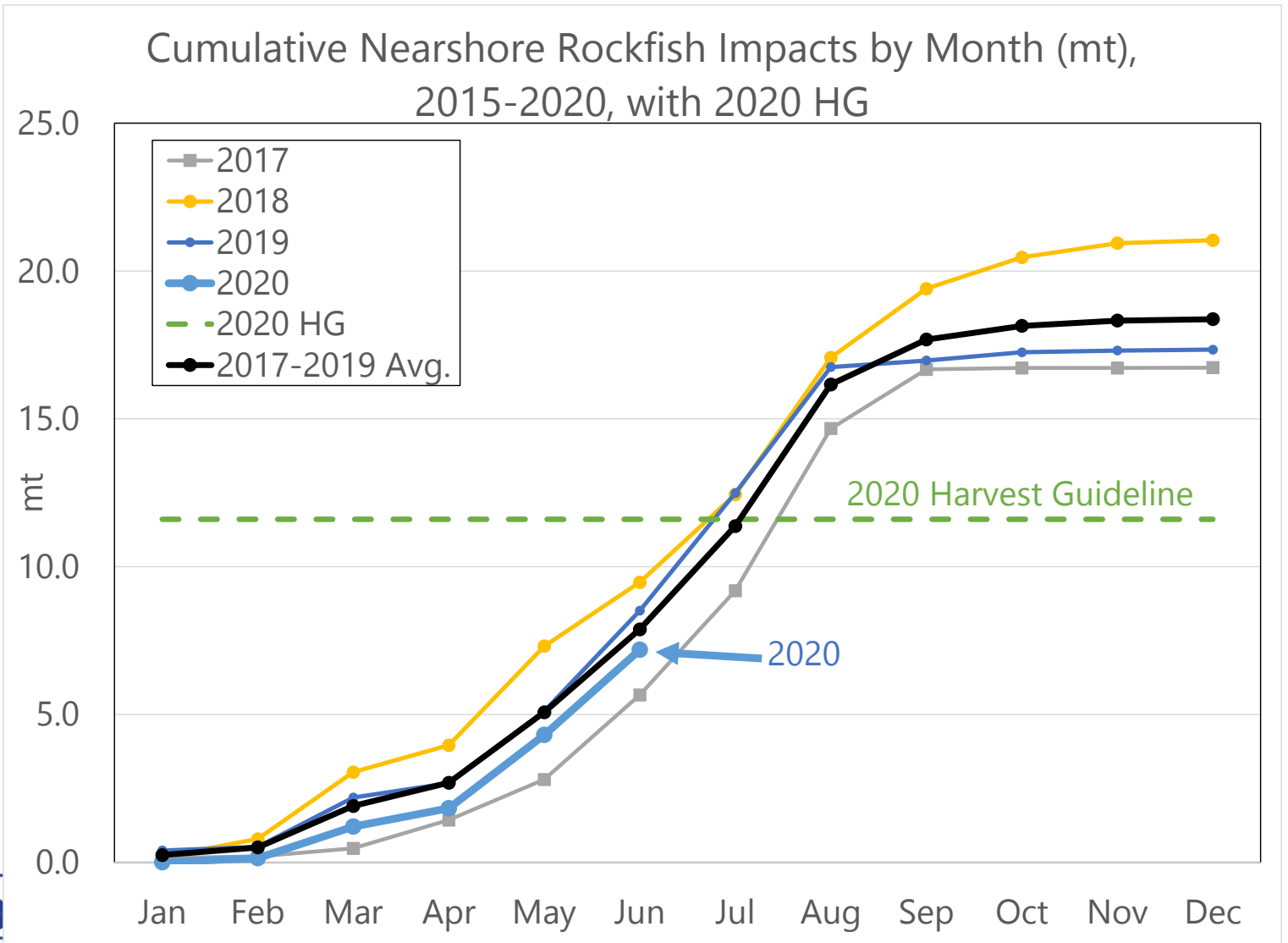
- Catches tracking low for most species
  - Black rockfish
  - Blue/deacon rockfish
  - Canary rockfish
  - Greenlings
  - Yelloweye rockfish bycatch

Cumulative Monthly Black Rockfish Landings (in mt), Through June, 2017-2020



# 2020 Season Progress

- Nearshore rockfish harvest guideline (catch limit) projected to be met in late July
- Cabezon limit likely to be met in mid-August
  - Similar to the past several years



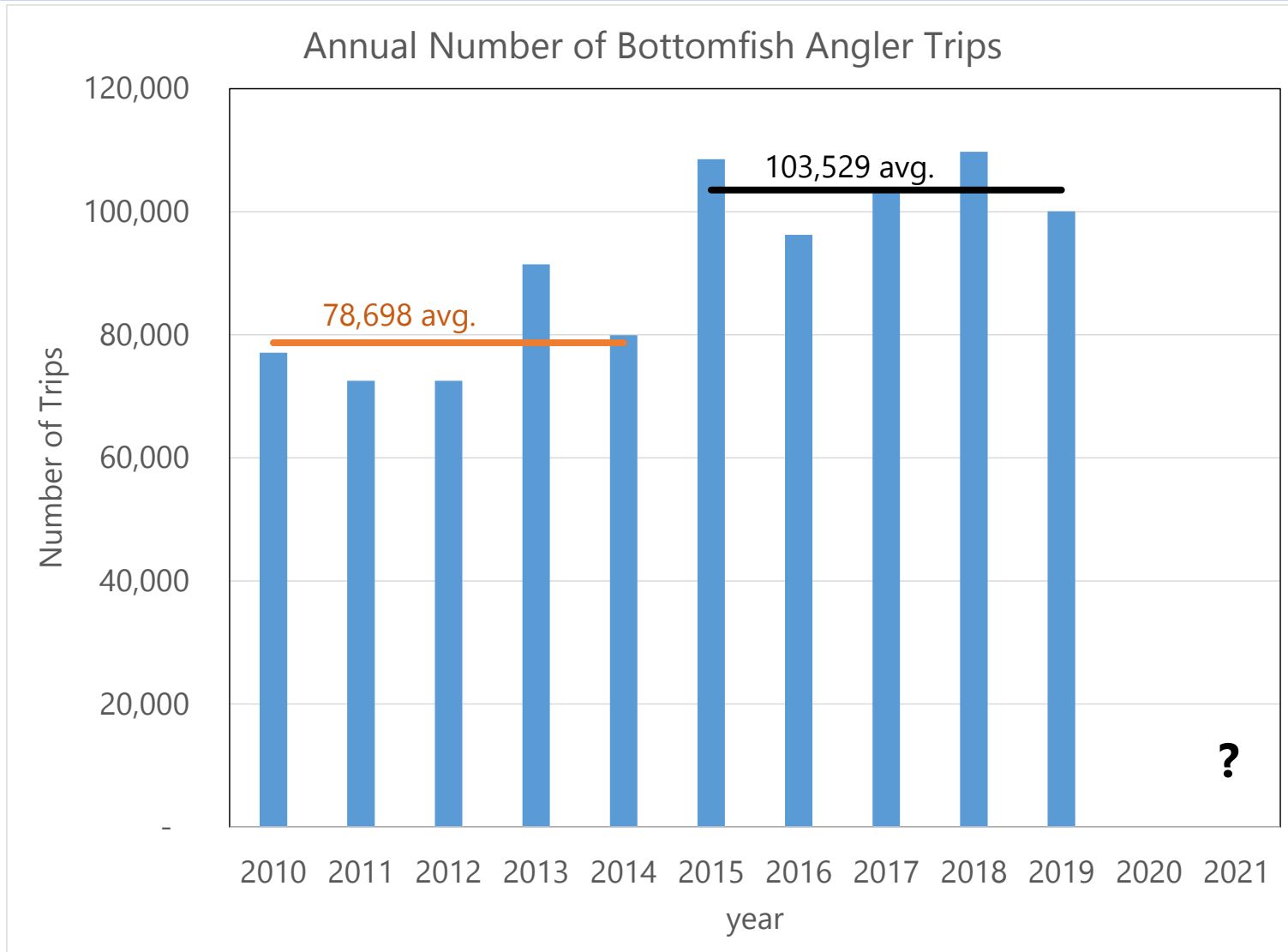


# 2021 Harvest Limits

Species or group	2020 limit (mt)	2021 limit (mt)
Black Rockfish	389.1	389.1
Blue/Deacon Rockfish	80.1	73.7
Nearshore Rockfish (China, Copper & Quillback RF)	11.6	10.8
Yelloweye Rockfish	7.2	6.9
Canary Rockfish	66.7	65.1
Cabezon	16.8	19.4
Greenlings	39.2	35.8

# 2021 Effort?

- similar to last 5 years?
- Depends on weather
- Depends on other opportunities
  - Salmon
  - Tuna
- Price of gas
- COVID issues?



# 2021 Season

- regulation changes to access more of and/or stay within harvest limits?
  - Which management measures are preferred?
    - Changes to depth restrictions
    - Changes to bag limit
    - Season retention (e.g. cabezon)
    - Others?
    - Not either/or, can be combined
  - Longleader gear fishing and all-depth halibut on the same trip
- Staff will make recommendations to the Oregon Fish & Wildlife Commission in December 2020





# Discussion





Marine  
Resources

# Thank you!



## Marine Resources Program Oregon Department of Fish and Wildlife

2040 SE Marine Science Drive  
Newport, OR 97365  
(541) 867-4741

Contact us!

- [lynn.mattes@state.or.us](mailto:lynn.mattes@state.or.us)
- [christian.t.heath@state.or.us](mailto:christian.t.heath@state.or.us)
- [maggie.sommer@state.or.us](mailto:maggie.sommer@state.or.us)