



Marine
Resources

Public Meeting on the 2023 Recreational Bottomfish Fishery



© Brandon Ford

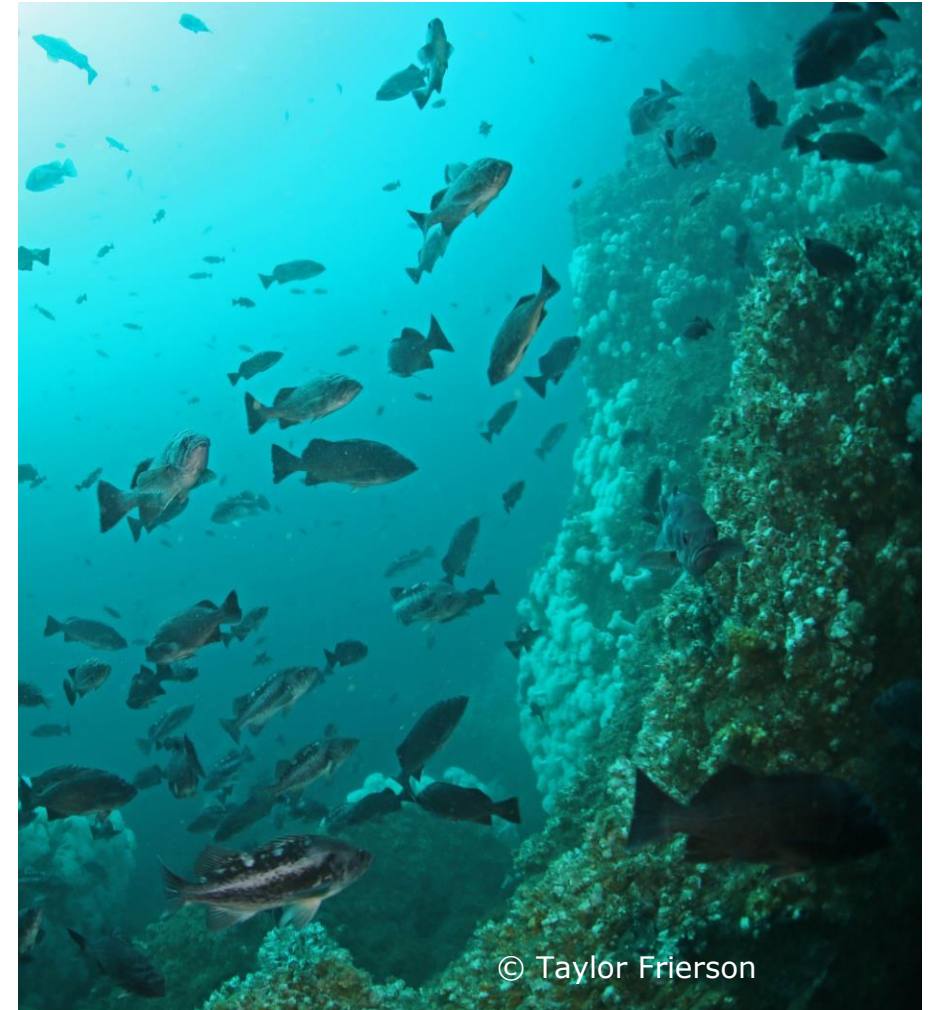
Meeting Outline

- Harvest guidelines for the 2023 recreational bottomfish fishery
- 2023 recreational bottomfish fishery season structure



2023 Harvest Guidelines

- Fish populations are considered **healthy** off the Oregon coast
 - Quillback rockfish healthy, but sustainable level is very small
 - Yelloweye rockfish continues to rebuild



© Taylor Frierson



2023 Harvest Guidelines

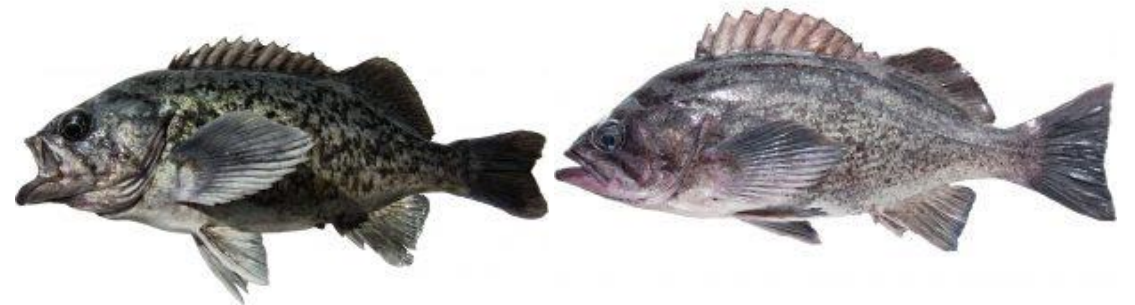
• Black rockfish

- Same level as 2021-2022
- New assessment will be conducted in 2023
 - Will inform harvest guidelines in 2025 and beyond



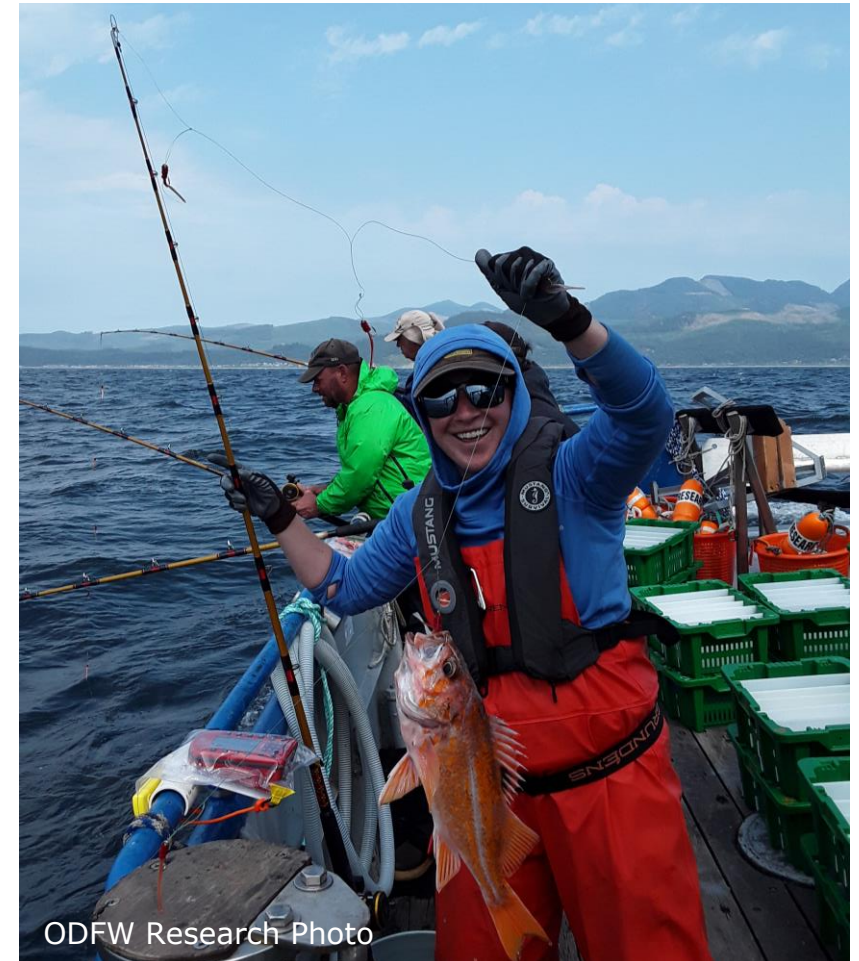
• Blue/deacon rockfish

- Harvest guideline is well above recent catches (~50 mt)
- Many anglers do not target or retain due to smaller size



Nearshore Fishery Independent Survey

- Surveys will provide stock assessors with additional data on **black rockfish** and other nearshore species
- Hypoxic areas were encountered during the survey
- Just reviewed by Scientific and Statistical Committee
- Should be used in the 2023 stock assessment



2023 Harvest Guidelines

• Copper Rockfish

- Healthy stock
- Increase to the nearshore rockfish complex harvest guideline due to 2021 copper rockfish assessment



• Quillback rockfish

- 2021 assessment: total population smaller than previously believed
- Recent catch levels higher than long-term sustainable levels
- Discard mortality from non-retention is approximately equal to the OR rec harvest guideline (< 2 mt)



2023 Harvest Guidelines

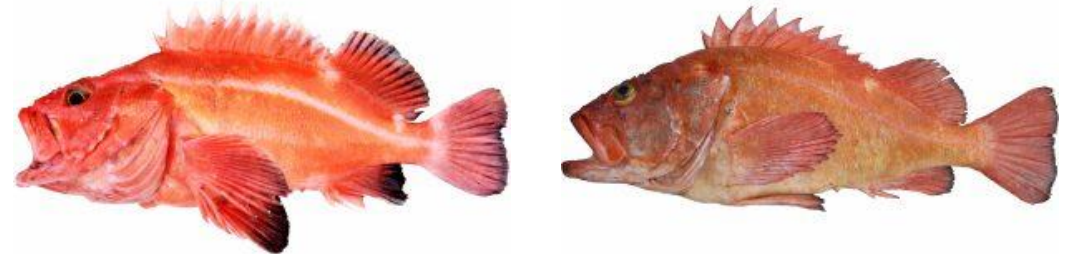
• Canary Rockfish

- Healthy stock
- Decrease in harvest guideline is due to an uncertainty buffer based on the time since the last assessment



• Yelloweye rockfish

- Rebuilding is still on track
- Federal ACL increased some
 - Fewer "off the top" deductions
- Higher Oregon recreational harvest guideline



2023 Harvest Guidelines

• Cabezon

- Healthy stock
- Decrease in harvest guideline is due to an uncertainty buffer based on the time since the last assessment



• Kelp greenling

- Healthy stock
- Catches have been way below the harvest guideline
- Decrease in harvest guideline is due to an uncertainty buffer based on the time since the last assessment



2023 Harvest Guidelines

- **Lingcod, yellowtail rockfish, and widow rockfish**
 - No Oregon recreational harvest guideline
 - All non-trawl fisheries have a combined allocation for each species
 - Harvests have been less than 30% of the non-trawl allocation for all three species in recent years



2023 Harvest Guidelines

Species or Species Group	2022 limit (mt)	2023 limit (mt)	
Black Rockfish	389.1	389.1	↔
Blue/Deacon Rockfish	71.2	68.8	↓
Nearshore Rockfish	10.5	15.8	↑
Yelloweye Rockfish	7.0	9.2	↑
Canary Rockfish	63.6	62.4	↓
Cabezon	18.6	18.0	↓
Greenlings	34.5	33.4	↓



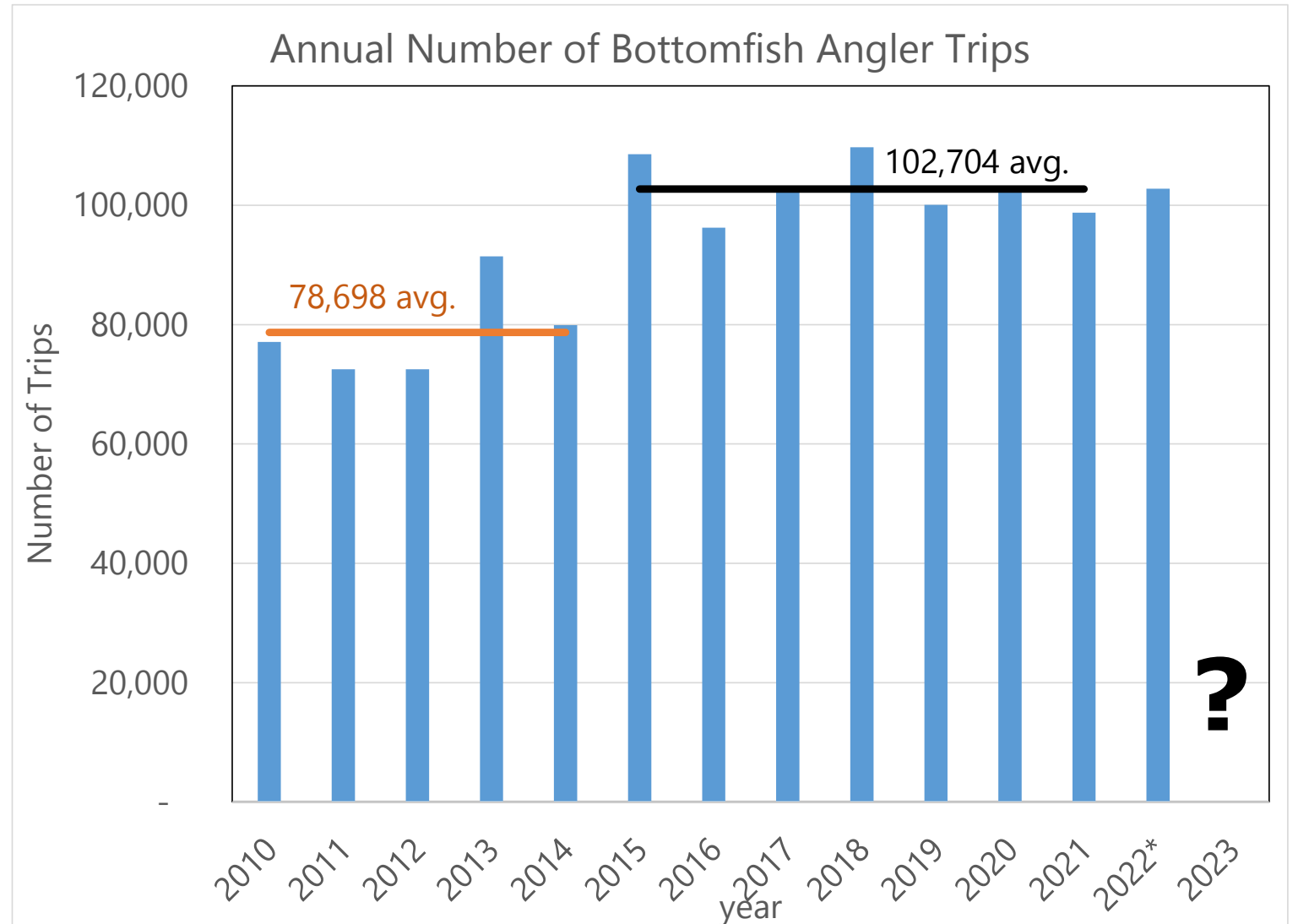
State Management Goals

- Strive for year-round bottomfish fishing opportunities
- Provide as much harvest opportunity as possible
- Minimize bycatch impacts
- Stay within harvest guidelines



What will 2023 effort be?

- High number of bottomfish angler trips since 2015
 - In 2022 over 100,000 bottomfish trips by Labor Day
- Factors include:
 - Weather
 - Salmon season
 - Price of gas/fuel
 - Tuna opportunity



ODFW 2023 Season Modeling

- Black rockfish accounts for 75-85% of catch and drives the modeling
- 6 fish bag limit exceeds the black rockfish limit in all scenarios modeled
- 5 fish bag limit stays within the black rockfish limit in all scenarios modeled
- 1 and 2 fish sub-bag limit, as well as no sub-bag limit, for China and copper rockfish stays within the nearshore rockfish limit
- Changing seasonal depth restrictions changes impacts to black rockfish and canary rockfish more than other species
 - Shallower depths= more black rockfish
 - Deeper depths = more canary rockfish
 - Greater uncertainty in projecting impacts for all-depths in July and August
 - Have not been open to all-depths in those months since 2004



2023 Preliminary Staff Recommendations

- **5 fish general marine bag limit**
 - **No sub-bag for China and copper rockfish**
 - 1 fish sub-bag for cabezon, opens July 1
- 2 lingcod
- 25 flatfish (other than P. halibut)
- Length limits
 - Lingcod @ 22 inches
 - Cabezon @ 16 inches
- **Yelloweye and quillback rockfish prohibited**



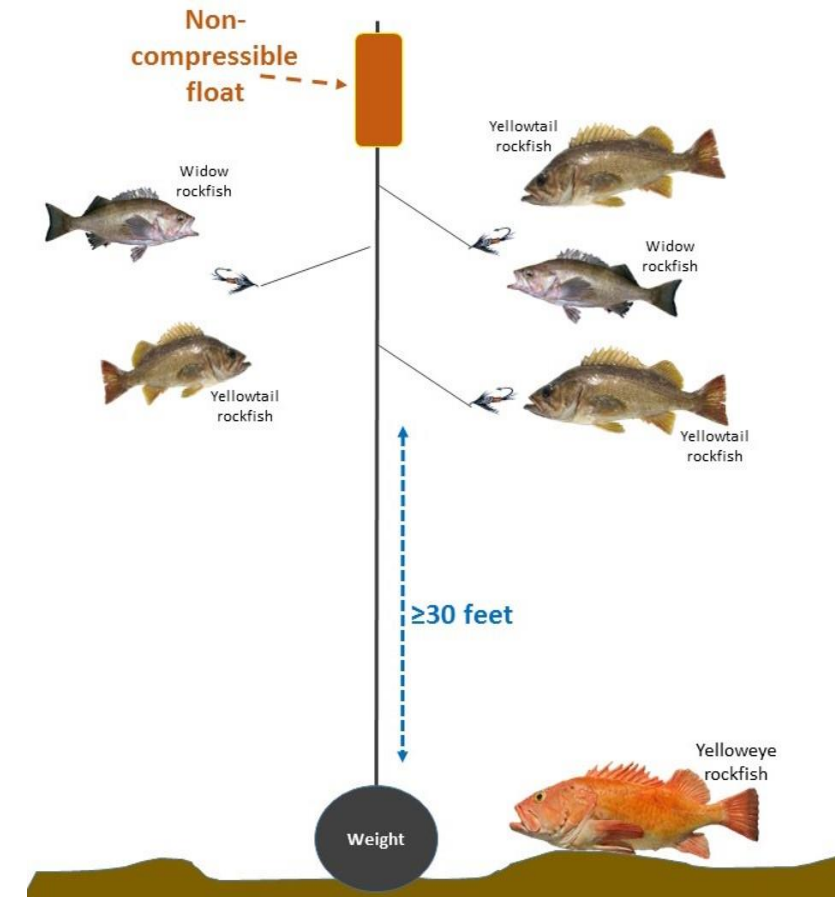
2023 Preliminary Staff Recommendations

- **No Seasonal depth restriction**
 - Open at all-depths year round
 - Could help take some pressure off the nearshore reefs
 - Will have to track yelloweye rockfish closely, especially in July and Aug
 - July and Aug highest effort months
 - Haven't been open to all-depths since 2004
- **Mandatory descending devices**



Longleader Gear Fishery Question

- Currently- 10 fish daily bag limit in federal regulations
 - 10 midwater rockfish species
- Request to look at increasing the daily bag limit
 - May help entice more anglers to the fishery
 - Take some pressure off the nearshore reefs
 - E.g., black and quillback rockfish
- No concerns with additional yellowtail or widow rockfish catches
- Have been getting within ~15 mt of canary rockfish harvest guideline in recent years
 - Concerns about additional canary rockfish catches?
- Should ODFW begin the federal process to increase the bag limit, to have in the toolbox? Will take some time (2024 or 2025)



Discussion

- *To be filled in during the meeting*



An underwater photograph showing a school of fish swimming above a coral reef. The water is a deep blue-green color. The fish are of various sizes and are scattered throughout the upper half of the frame. The coral reef is visible in the lower half, with various types of coral and other marine life.

Thank you!

Marine Resources Program
Oregon Department of Fish and Wildlife
2040 SE Marine Science Drive
Newport, OR 97365
(541) 867-4741

christian.t.heath@odfw.oregon.gov

lynn.mattes@odfw.oregon.gov

Jessica.l.watson@odfw.oregon.gov