



Marine
Resources

Public Meetings on the 2026 Recreational Bottomfish Fishery

October 6, 7, and 8, 2025

ODFW Marine Reserves Photo





Marine
Resources

Meeting Outline

- State Management Goals
- Review 2025 season
- Looking ahead to 2026
 - Stock Assessments & Allocations
 - Public input on Season Structure and Regulations



State Management Goals

- Strive for year-round bottomfish fishing opportunities
- Provide harvest opportunity
- Limit regulation complexity
- Minimize discarded fish



Photo by Taylor Frierson



2025 Bag Limits

General Marine Species Daily Bag Limit:

- Jan. 1 – Jun. 30: 4-fish
 - 1 canary rockfish sub-bag limit
- Jul. 1 – Aug. 17: 5-fish
 - 1 canary rockfish sub-bag limit
 - 1 cabezon sub-bag limit
- **Aug. 18 – Sept. 17: 4-fish**
 - 1 canary rockfish sub-bag limit
 - 1 cabezon sub-bag limit
- **Sept. 18 – Dec. 31: 3-fish**
 - 1 canary rockfish sub-bag limit
 - 1 cabezon sub-bag limit

Additional Bag Limits:

- 2 lingcod
- 25 flatfish (other than P. halibut)
- 10 long-leader fish (10 species)
 - 1 canary rockfish sub-bag limit
- 10 sablefish



2025 Regulations

- No seasonal depth restriction
- Bottomfish allowed with halibut
 - Offshore long-leader fishing in combination with halibut during all-depth halibut fishing days **OR** lingcod and the general marine species bag limit
- Mandatory descending devices
- Length limits
 - Lingcod - 22 inches
 - Cabezon - 16 inches



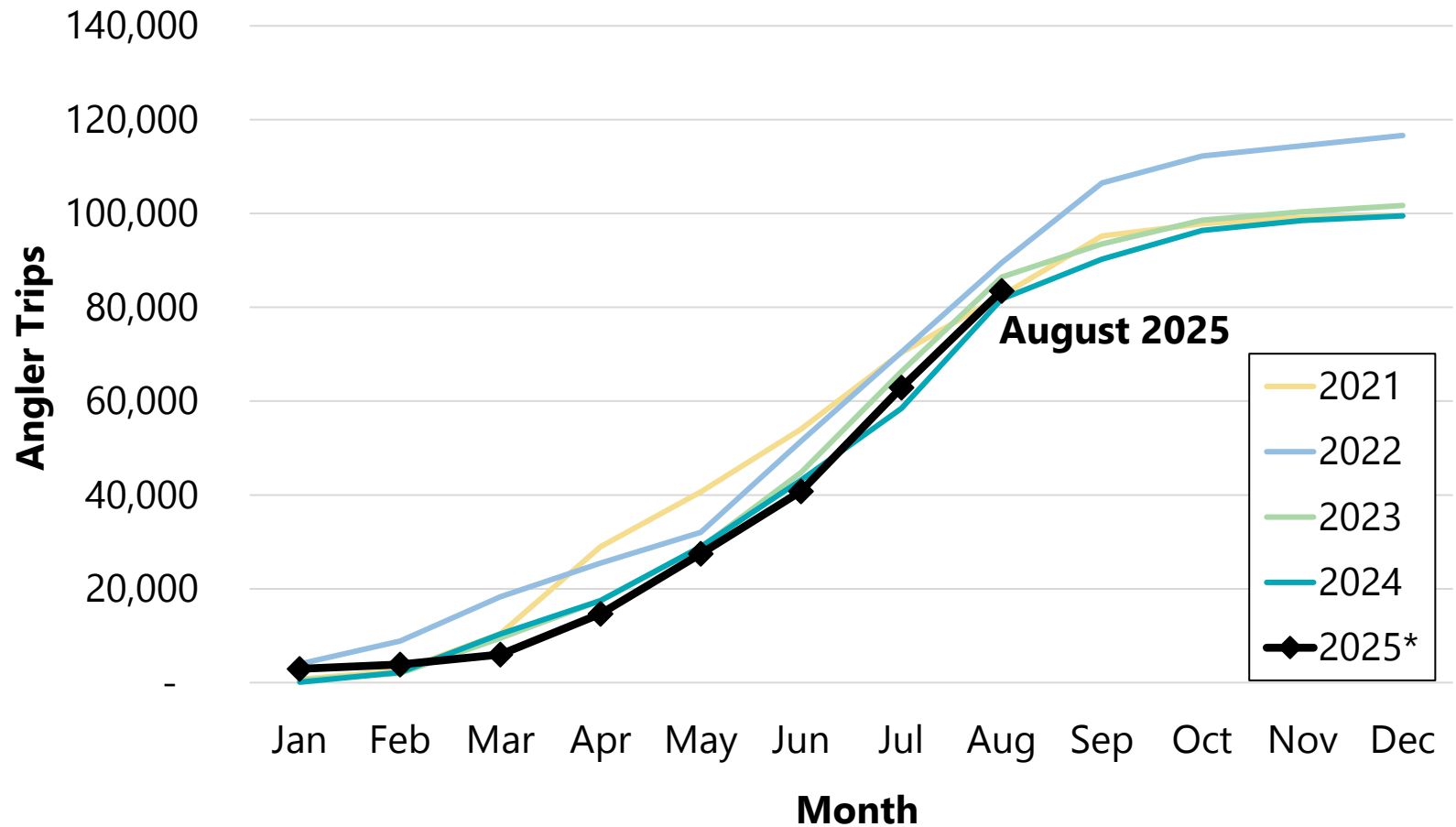
ODFW Photo



2025 Season Progress: Angler Trips

- Tracking very similar to our preseason projections
 - ~83,500 bottomfish angler trips through August
- *Data for 2025 is preliminary

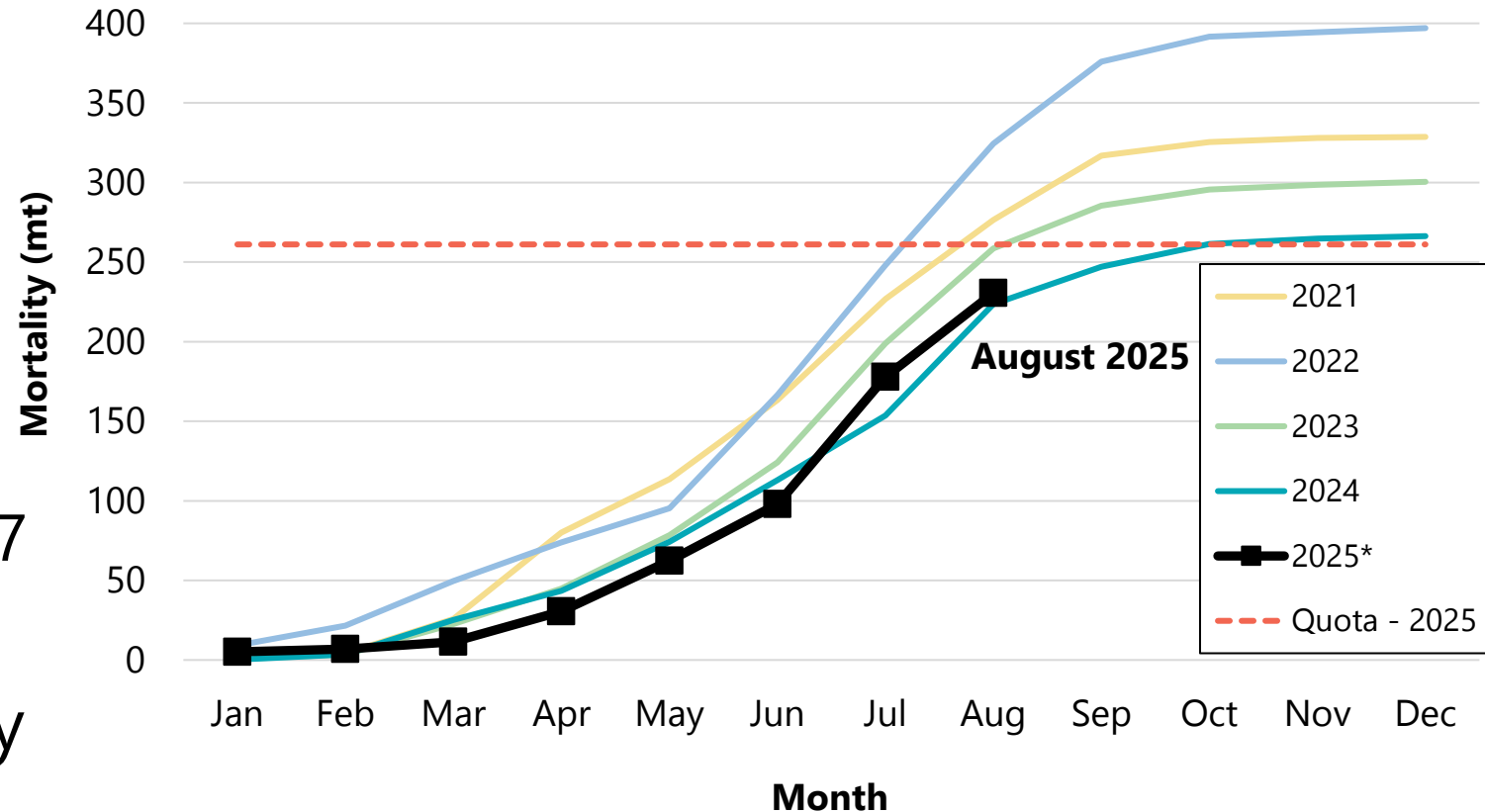
Bottomfish Effort by Month and Year



2025 Season Progress: Black Rockfish

- Tracking above our preseason projections
 - ~231 metric tons
- Black rockfish dominate the bottomfish catch
 - 4-fish bag Jan. – Jun.
 - 5-fish bag Jul. – Aug. 17
 - 4-fish bag Aug. 18 – Sept. 17
 - 3-fish bag Sept. 18 – Dec.
- *Data for 2025 is preliminary

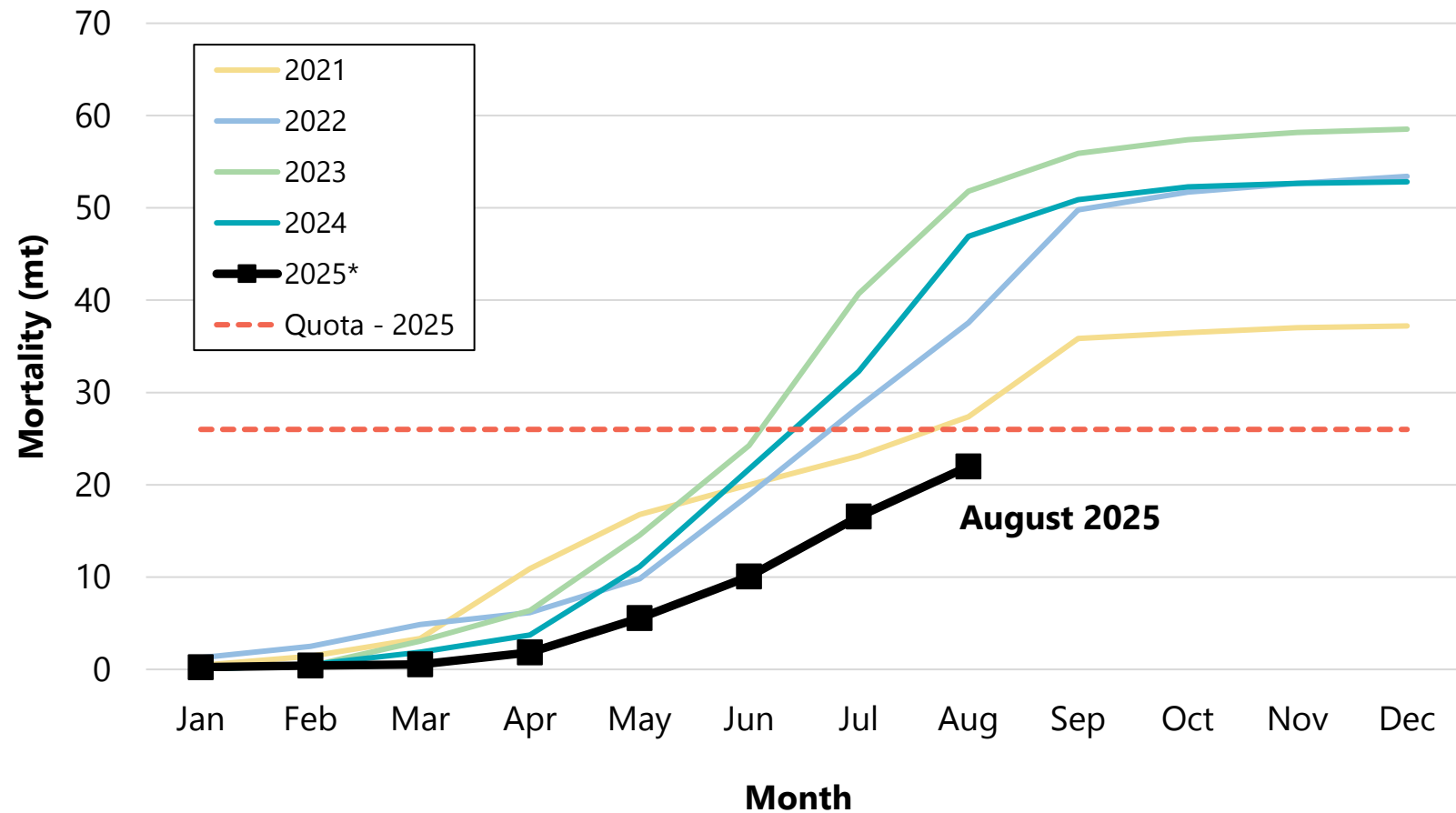
Cumulative Black Rockfish Mortality by Month and Year



2025 Season Progress: Canary Rockfish

- 1-fish sub-bag limit
- Tracking slightly below our preseason projections
 - ~22.5 metric tons
- *Data for 2025 is preliminary

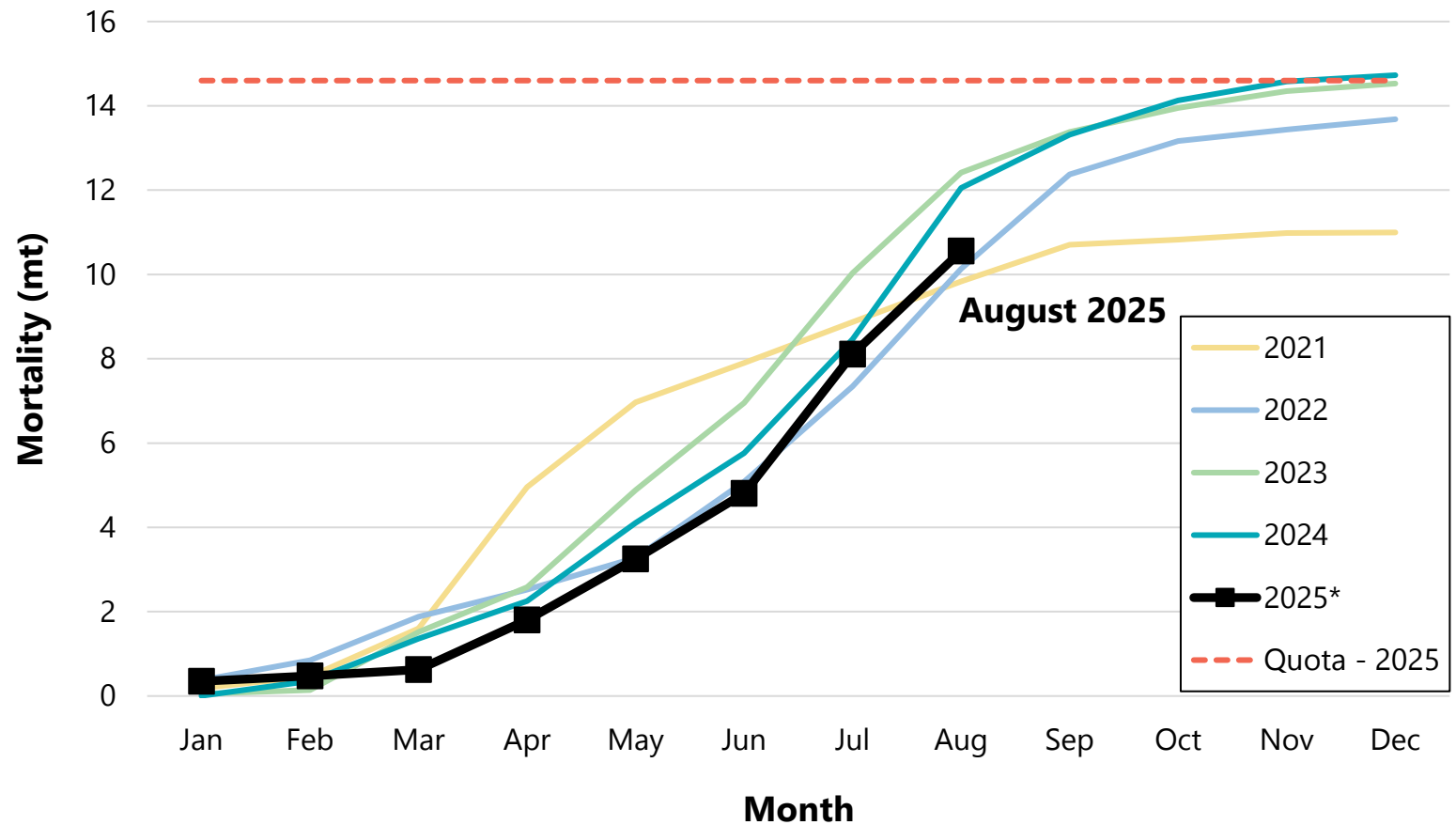
Cumulative Canary Rockfish Mortality by Month and Year



2025 Season Progress: Nearshore

- Nearshore rockfish include China, copper, and quillback rockfishes
 - Quillback rockfish prohibited since 2022
- *Data for 2025 is preliminary

Cumulative Nearshore Rockfish Mortality by Month and Year



2025 and 2026 Ocean Boat Harvest Limits

Species or Group	2025 Limit (mt)	2025 Attainment (mt)*	2026 Limit (mt)
Black Rockfish	247.8	231.0 (93%)	253.0 ↑
Blue/Deacon Rockfish	63.8	24.5 (38%)	62.1 ↓
Nearshore Rockfish (China, Copper & Quillback RF)	13.4	11.2 (83%)	13.0 ↓
Yelloweye Rockfish	6.9	2.7 (40%)	7.0 ↑
Canary Rockfish	26.0	22.5 (87%)	26.1 ↑
Cabezon (opened July 1)	16.7	7.7 (46%)	16.4 ↓
Greenlings	13.5	2.2 (16%)	13.1 ↓

*Preliminary estimates through August





Marine
Resources

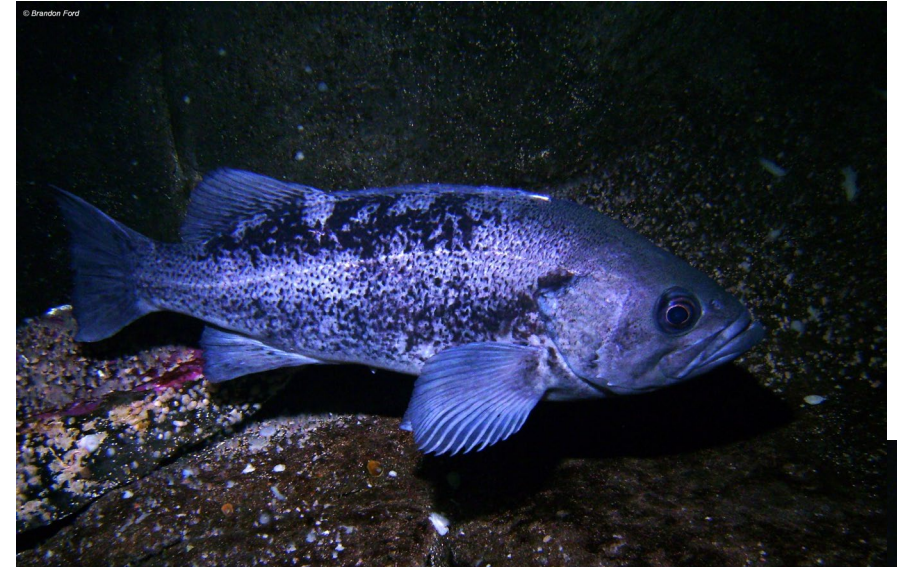
State Harvest Limits

Species or Group	Sector	Allocation %	2026 Allocation (mt)
Black Rockfish	Recreational	76.0%	266.3
	Commercial	24.0%	84.1
Blue/Deacon Rockfish	Recreational	81.4%	63.2
	Commercial	18.6%	14.4
Nearshore Rockfish Complex	Recreational	48.7%	14.3
	Commercial	51.3%	15.0



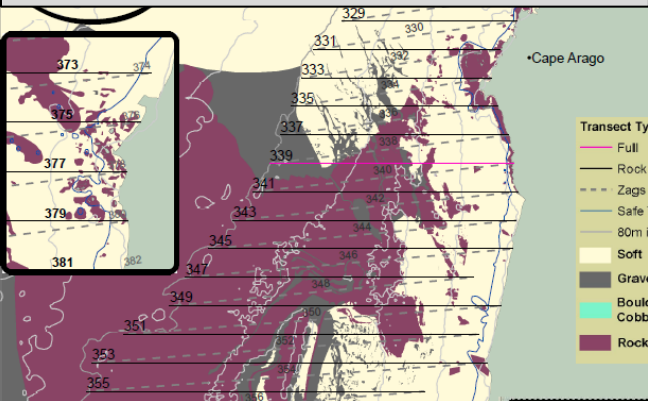
2023 Stock Assessments

- Factors contributing to black rockfish
 - 2021 hydroacoustic survey (nearshore rockfish survey)
- Factors contributing to canary rockfish
 - Parameters to account how different fisheries catch canary rockfish
- Factors contributing to both
 - Estimated young fish entering the fishery in future years
 - Simplified natural mortality estimates
 - Updated estimates and data sources

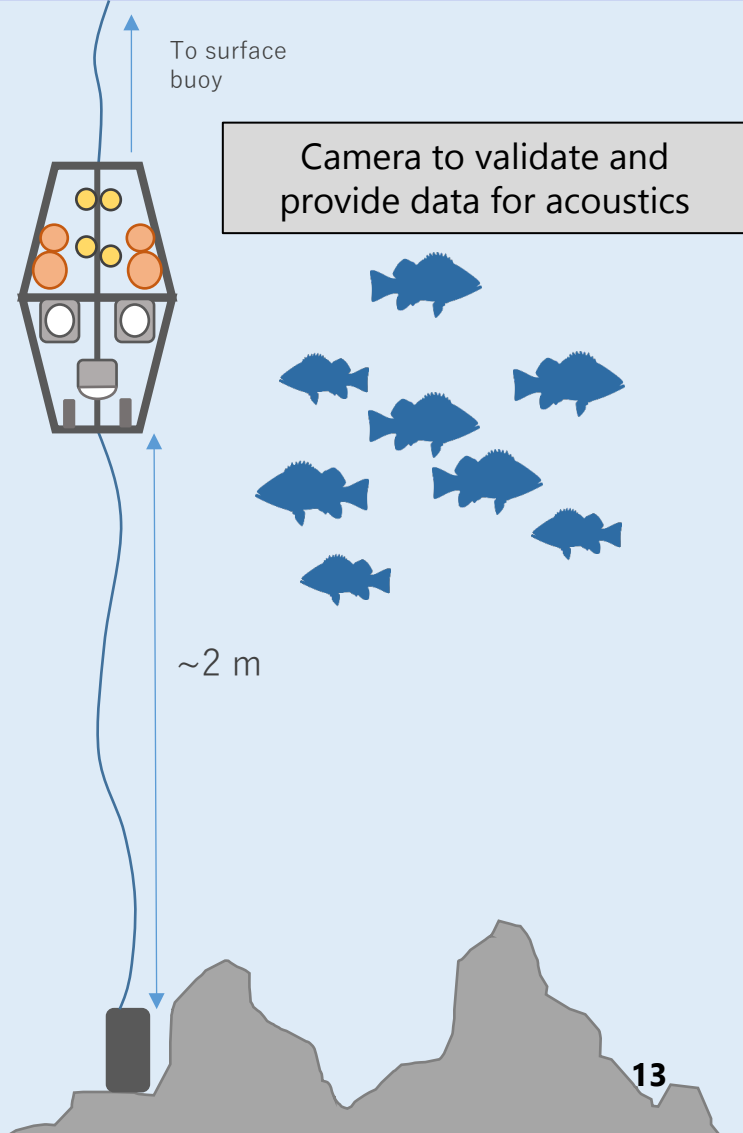
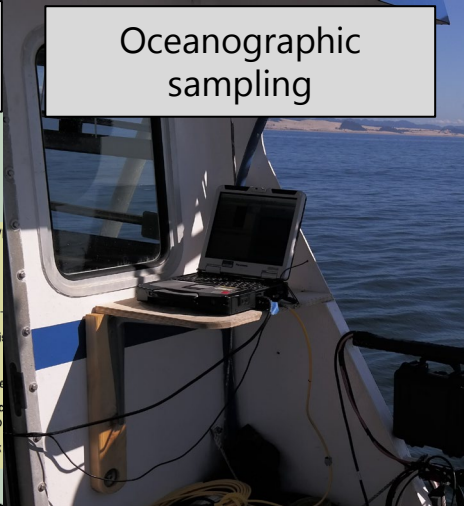


ODFW's Second Black Rockfish Survey

Transects:
WA to CA mostly on rock



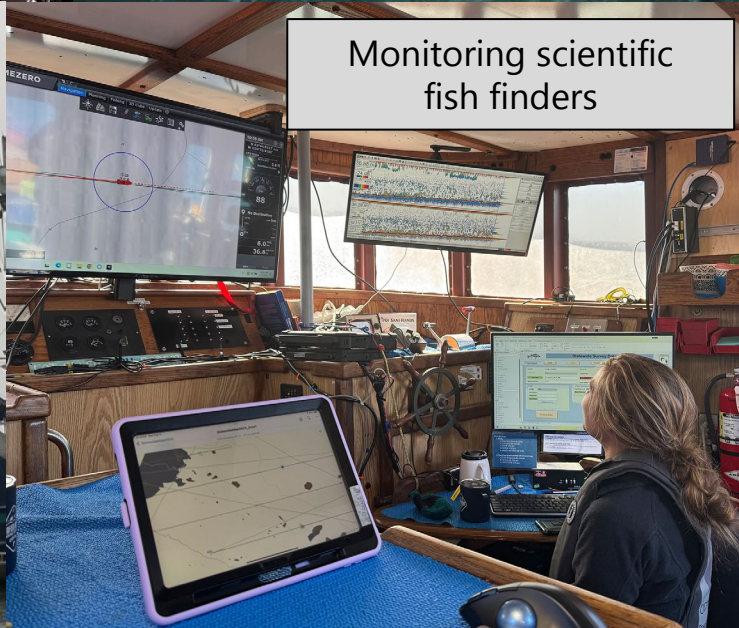
Oceanographic sampling



Survey Vessels

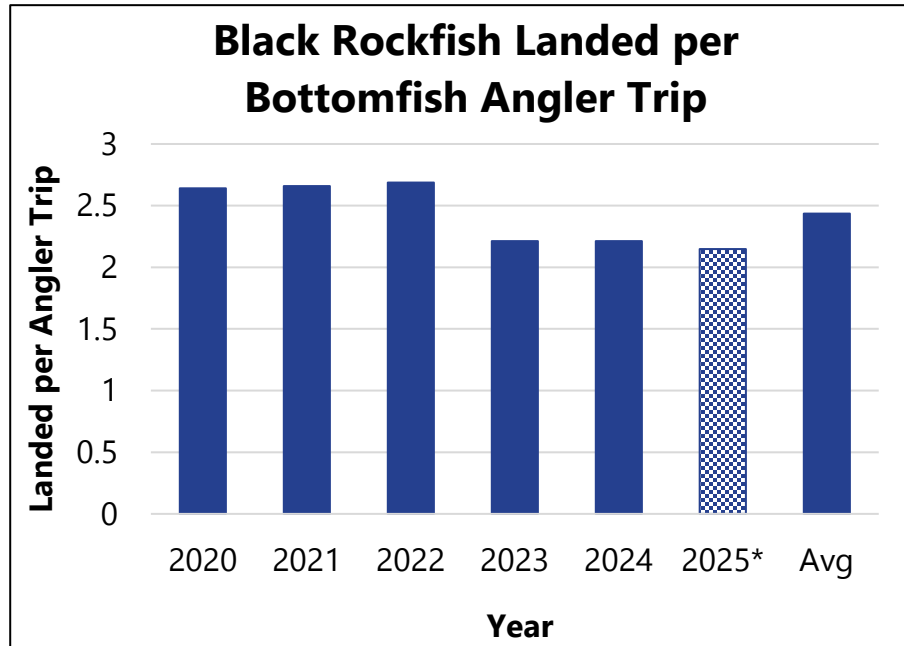


Monitoring scientific fish finders



Catch Rates: Black and Canary Rockfishes

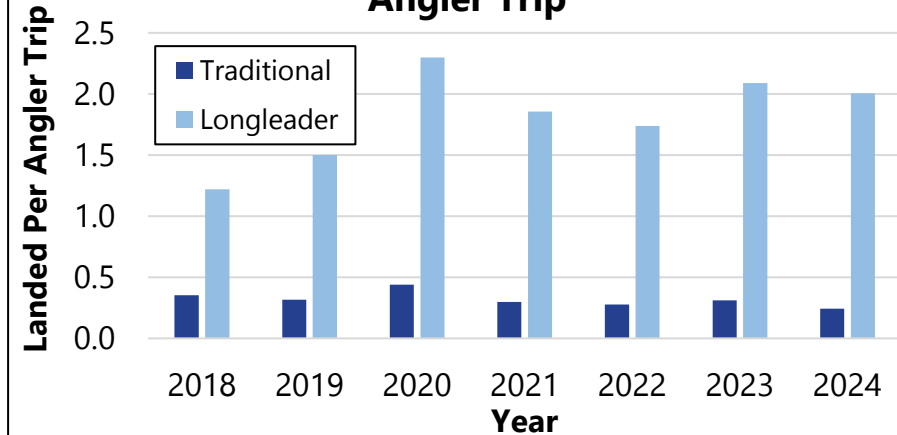
Black rockfish



*Data for 2025 is preliminary through August



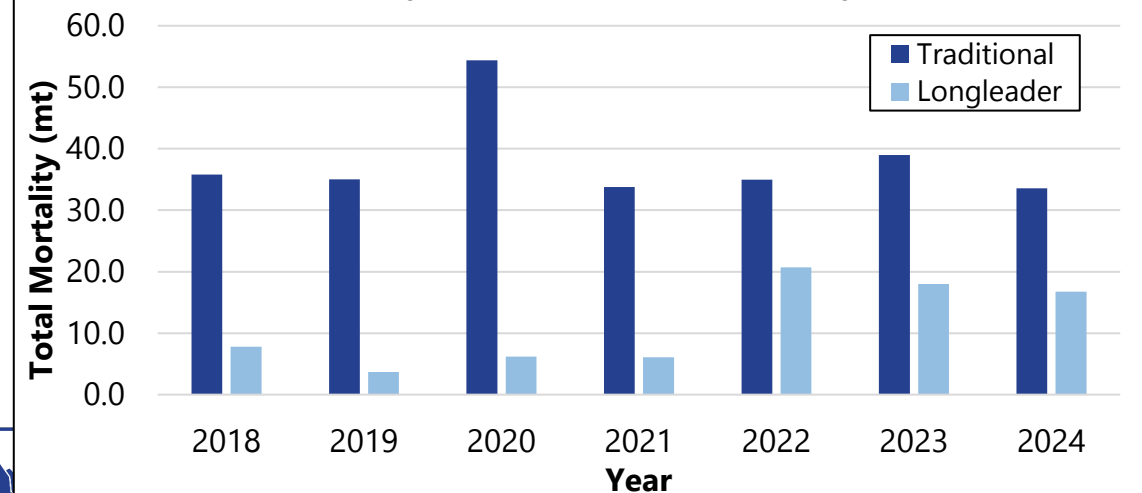
Canary Rockfish Landed per Bottomfish Angler Trip



Canary rockfish



Canary Rockfish Total Mortality



2026 Canary Rockfish Sub-Bag Limit

- Really only two options to consider for canary rockfish:
 - Option 1 – Sub-bag of 1 canary rockfish in both the long-leader fishery and in the traditional bottomfish fishery
 - Option 2 – Sub-bag in the long-leader fishery set to the same limit as the general marine species bag limit (4-fish per angler in 2025)
- Either outcome may result in an inseason change that prohibits canary rockfish later in the season
 - The key difference between canary rockfish and black rockfish is that canary rockfish are not the primarily caught species in either the long-leader fishery or traditional bottomfish fishery



2026 Bag Limit Projections: 5-Fish

2026 GROUND FISH MORTALITY

		Jan	Feb	Mar	Apr	May	Jun	Jul	Aug	Sep	Oct	Nov	Dec	OCEAN BOAT		
COMPLETED?		N	N	N	N	N	N	N	N	N	N	N	N	TOTAL	LIMIT	±
ACTUAL OR PROJECTED?		P	P	P	P	P	P	P	P	P	P	P	P			
Per month	BLACK RF	3.00	3.78	13.93	24.30	26.50	37.11	65.79	50.96	28.29	14.90	4.94	3.70	277.2	253.0	110%
	BLUE & DEACON RF	0.20	0.26	0.95	1.64	1.83	2.59	4.52	3.94	2.68	1.06	0.34	0.25	20.2	62.1	33%
	CABEZON	0.04	0.05	0.17	0.29	0.30	0.39	6.65	4.83	2.67	1.41	0.46	0.35	17.6	16.4	107%
	GREENLINGS	0.03	0.04	0.13	0.24	0.27	0.38	0.74	0.53	0.31	0.15	0.05	0.04	2.9	13.1	22%
	Minor NSRF (S Cap)	0.15	0.19	0.68	1.20	1.46	1.90	3.23	2.51	1.59	0.77	0.24	0.18	14.1	13.0	108%
	CANARY RF (S Cap)*	0.25	0.31	1.15	2.54	4.26	6.09	9.18	7.02	4.66	1.49	0.43	0.32	37.7	26.1	144%
	YELLOW EYE RF (S Cap)	0.04	0.05	0.18	0.39	1.00	1.57	1.43	1.22	0.84	0.31	0.07	0.05	7.1	7.0	102%

*Canary rockfish set at a 1-fish sub-bag for both long-leader and traditional bottomfish



2026 Bag Limit Projections: 4-Fish

2026 GROUND FISH MORTALITY

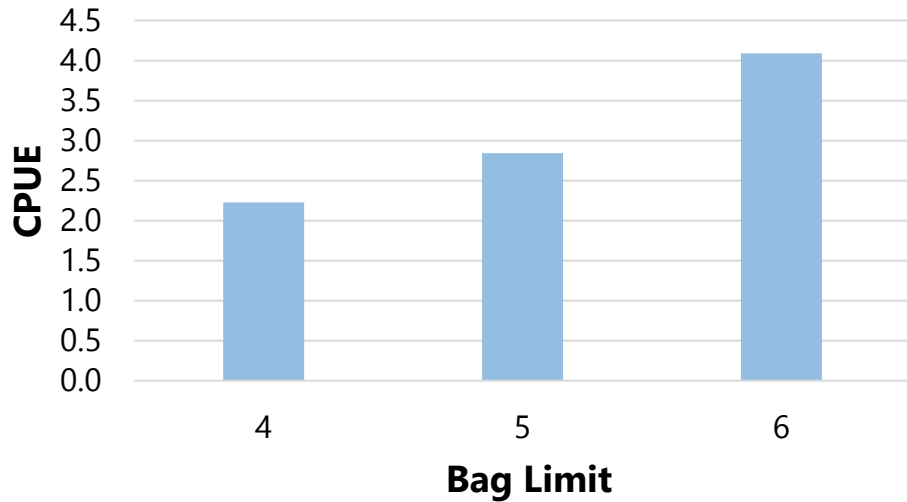
		Jan	Feb	Mar	Apr	May	Jun	Jul	Aug	Sep	Oct	Nov	Dec	OCEAN BOAT		
COMPLETED?		N	N	N	N	N	N	N	N	N	N	N	N	TOTAL	LIMIT	±
ACTUAL OR PROJECTED?		P	P	P	P	P	P	P	P	P	P	P	P			
Per month	BLACK RF	2.64	3.33	12.26	21.39	23.52	33.16	59.25	45.60	25.13	13.11	4.33	3.26	247.0	253.0	98%
	BLUE & DEACON RF	0.18	0.23	0.83	1.44	1.62	2.32	4.07	3.57	2.46	0.93	0.30	0.22	18.2	62.1	29%
	CABEZON	0.03	0.04	0.14	0.25	0.25	0.33	5.88	4.21	2.31	1.20	0.39	0.29	15.3	16.4	93%
	GREENLINGS	0.02	0.03	0.11	0.21	0.23	0.33	0.65	0.46	0.27	0.13	0.04	0.03	2.5	13.1	19%
	Minor NSRF (S Cap)	0.13	0.16	0.60	1.05	1.31	1.70	2.91	2.24	1.44	0.69	0.21	0.16	12.6	13.0	97%
	CANARY RF (S Cap)*	0.22	0.27	1.02	2.24	3.96	5.71	8.53	6.55	4.37	1.35	0.39	0.28	34.9	26.1	134%
	YELLOW EYE RF (S Cap)	0.03	0.04	0.15	0.33	0.94	1.49	1.31	1.12	0.78	0.28	0.06	0.04	6.6	7.0	94%

*Canary rockfish set at a 1-fish sub-bag for both long-leader and traditional bottomfish



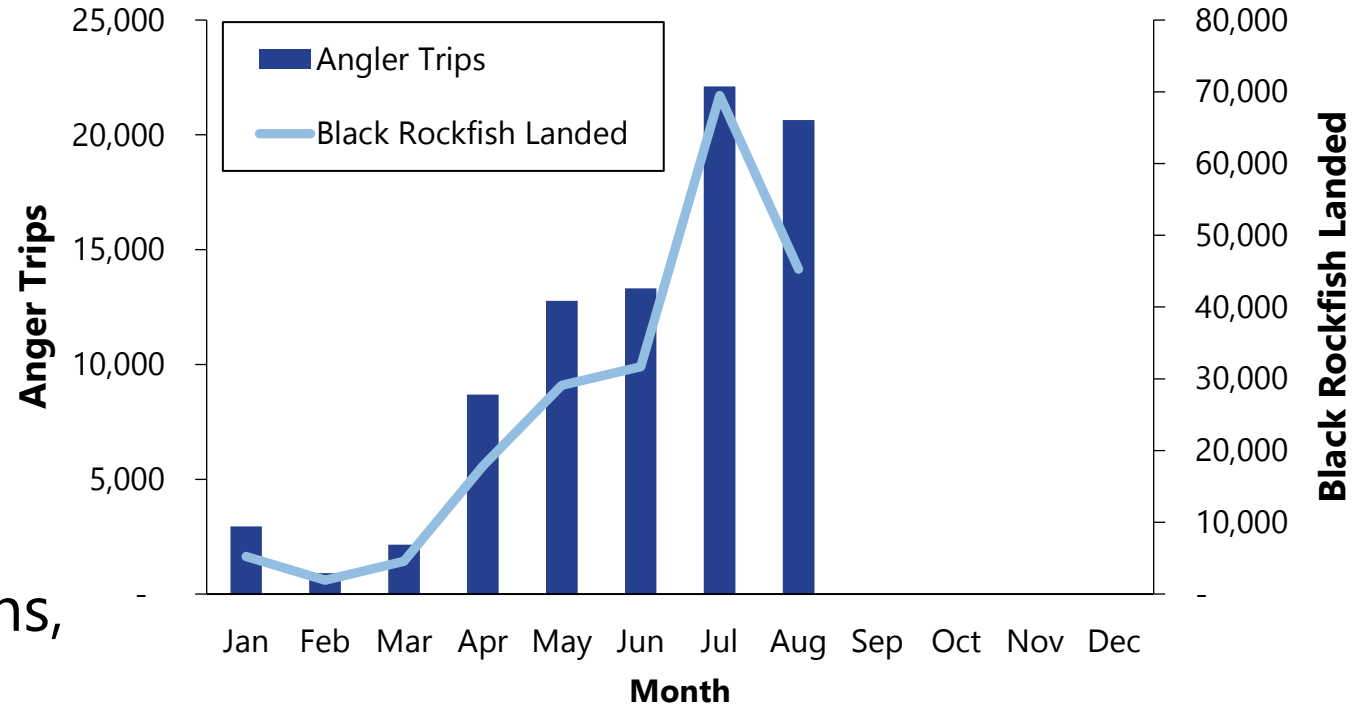
2025 Bag Limit Projections: 4-Fish

Black Rockfish Catch per Angler (CPUE) by Bag Limit in July and August 2017-2025



- July and August are the busiest months, and we see that a 4-fish bag pulls the catch rate down on black rockfish
- Black rockfish total catch landed track closely to bottomfish angler trips

Angler Trips and Black Rockfish Landed in 2025* by Month



Jan 1 – Jun 30	Jul 1 – Aug 17	Aug 18 – Sept 17	Sept 18 – Dec 31
4-fish bag	5-fish bag	4-fish bag	3-fish bag



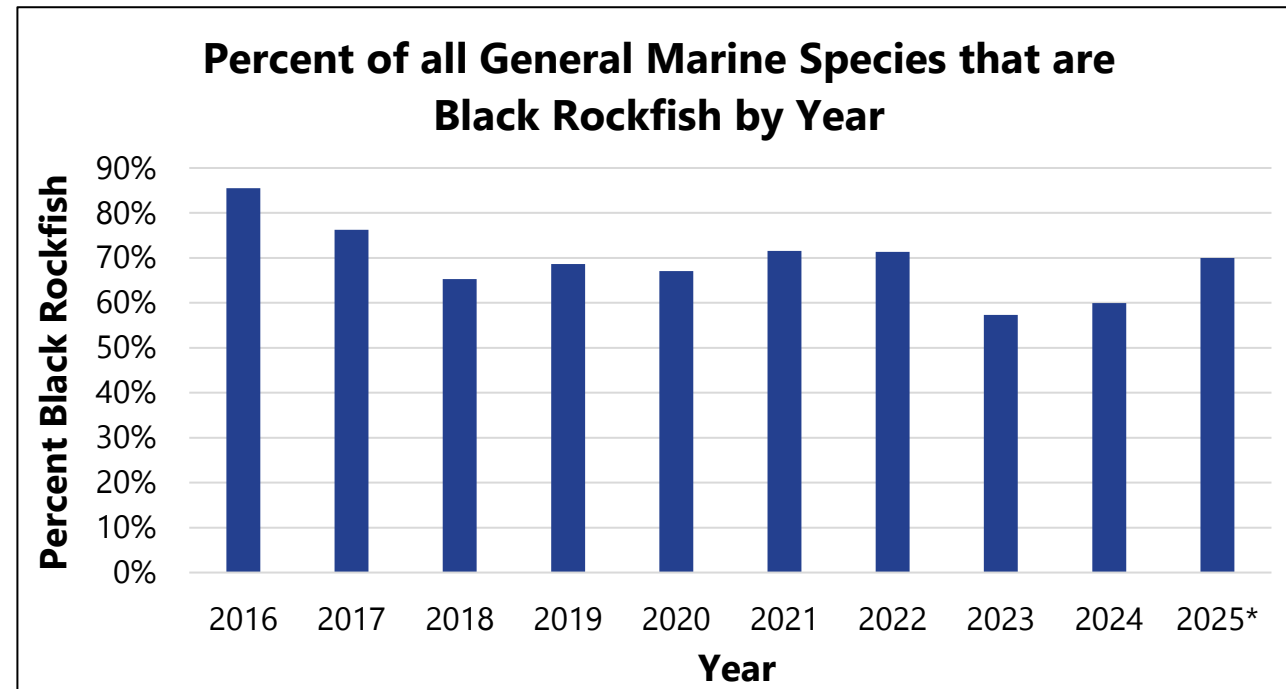
*Data for 2025 is preliminary

5-Fish Bag Limit Projections: 3-Fish Sub-bag Limit for Black Rockfish

2026 GROUND FISH MORTALITY

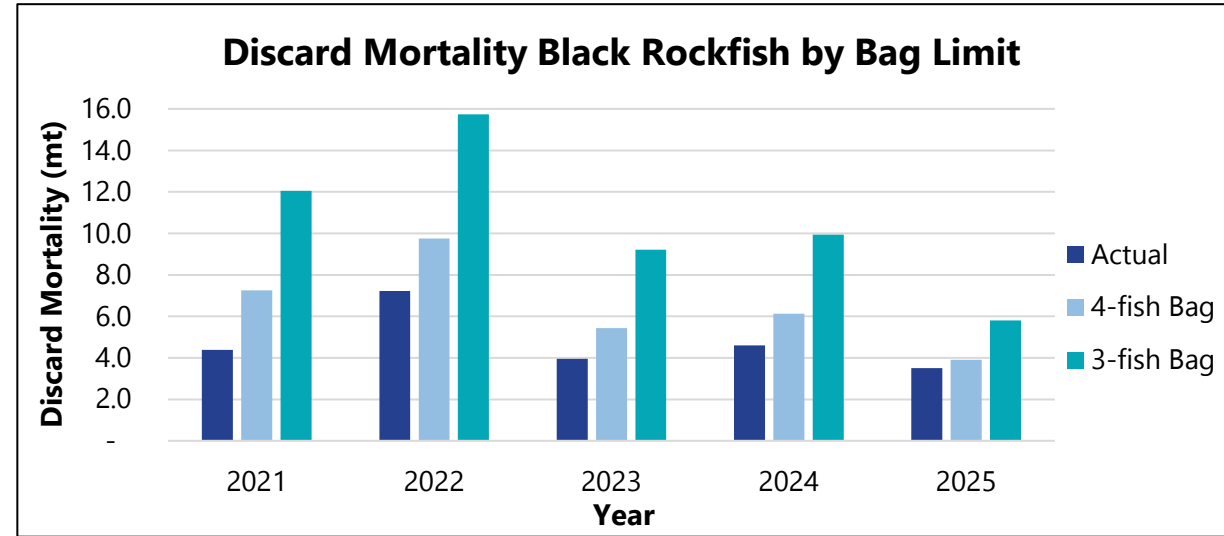
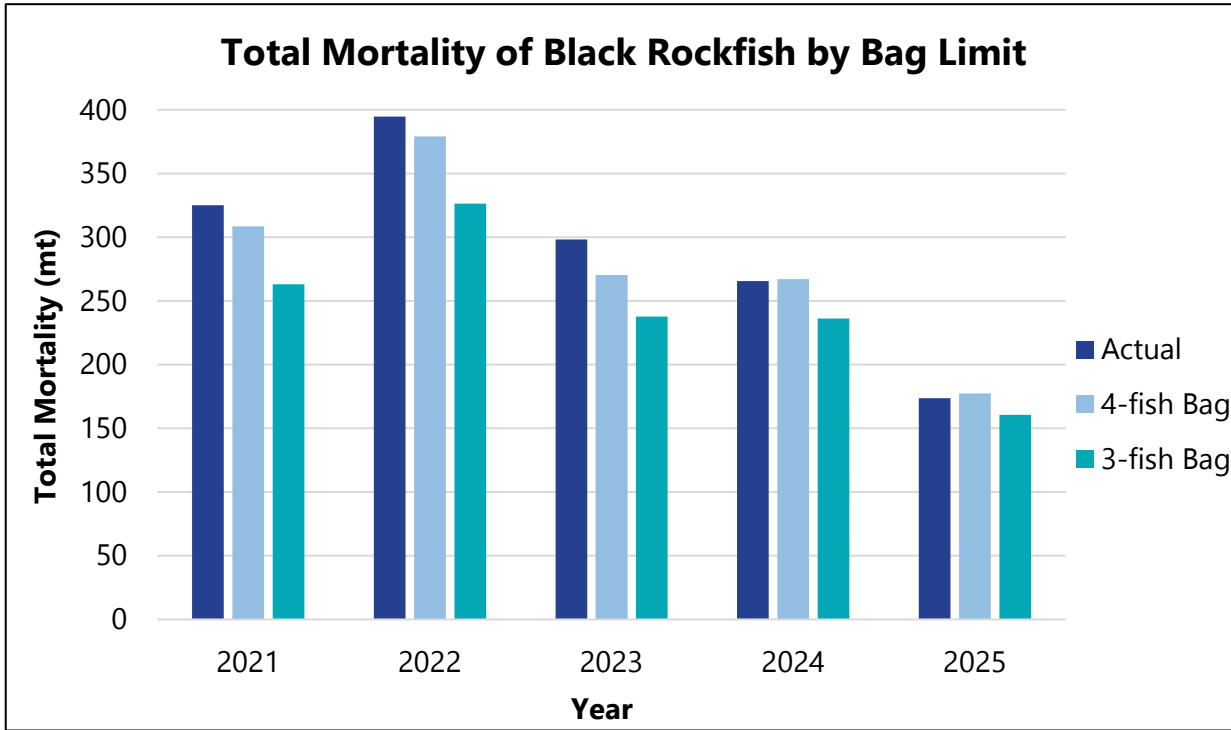
	Jan	Feb	Mar	Apr	May	Jun	Jul	Aug	Sep	Oct	Nov	Dec	OCEAN BOAT		
COMPLETED?	N	N	N	N	N	N	N	N	N	N	N	N	TOTAL LIMIT ±		
ACTUAL OR PROJECTED?	P	P	P	P	P	P	P	P	P	P	P	P	204.7	253.0	81%
BLACK RF	2.11	2.66	9.80	17.18	19.22	27.55	50.17	38.50	20.89	10.54	3.46	2.60			

- Black rockfish is the dominant catch in bottomfish fishery thus the model cannot put black rockfish as a sub-bag option.
- 3-Fish bag limit is a nice starting place, however.

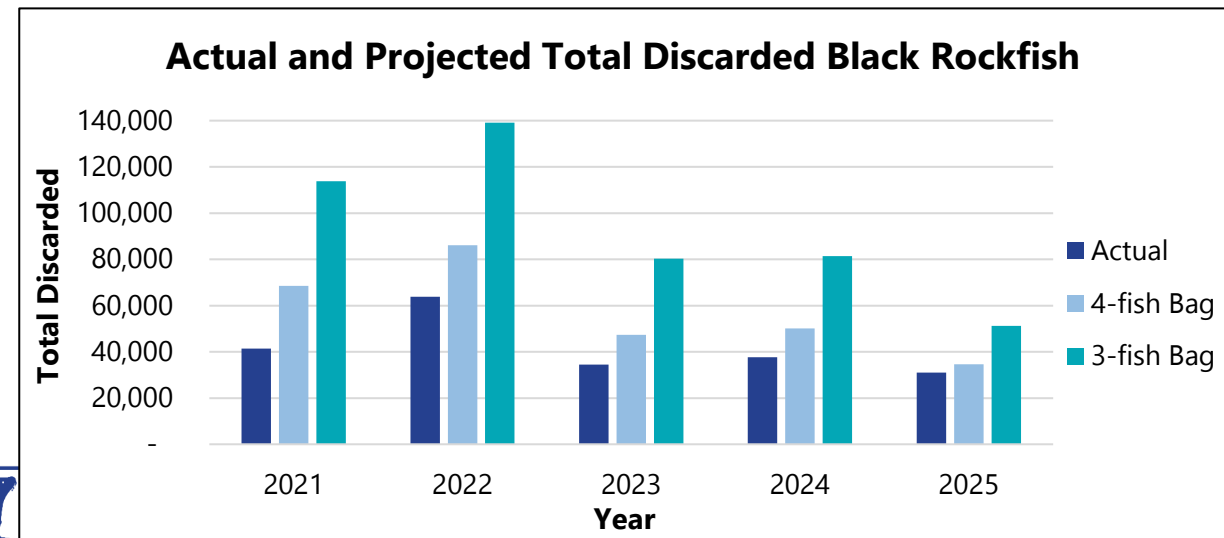


*Data for 2025 is preliminary

5-Fish Bag Limit Projections: Black Rockfish as a Sub-bag



- With a sub-bag limit in place for black rockfish, there will be an increase of at sea discards of black rockfish



*Data for 2025 is preliminary



Sub-bag of Black Rockfish Concerns

- Increasing effort on other quota managed species
 - Black rockfish quota is **253.0 metric tons**
 - Nearshore rockfish quota is **13.0 metric tons**
 - Shortened seasons in recent years as quota has been attained
 - Cabezon quota is **16.4 metric tons**
 - Already limited annually with 1-fish sub-bag and shortened season
 - Canary rockfish quota is **26.1 metric tons**
 - Limited by a 1-fish sub-bag in 2025
 - Blue/deacon rockfish quota is **62.1 metric tons**
- Once these quotas are reached, retention will be prohibited causing inseason changes and bag limit complexities



2026 Black Rockfish Bag Limit

- General marine bag limit of 5-fish
 - Only an option with a shortened fishing season
- General marine bag limit of 5-fish with a 3-fish sub-bag limit for black rockfish
 - Increased risk of exceeding other quota managed species
 - Increased discard waste
- General marine bag limit of 4-fish
 - Reduced risk of any inseason changes
 - Reduced complexity



2026 Season Structure Options

- Time/Area Closures for Bottomfish Only
 - Bringing this up again, as it remains an option
 - Long-leader fishing could still be allowed
 - Fishing from shore could still be allowed (equity reasons)
 - Closing winter months provides little relief (no benefit)
 - Closing a four-week window during the summer months

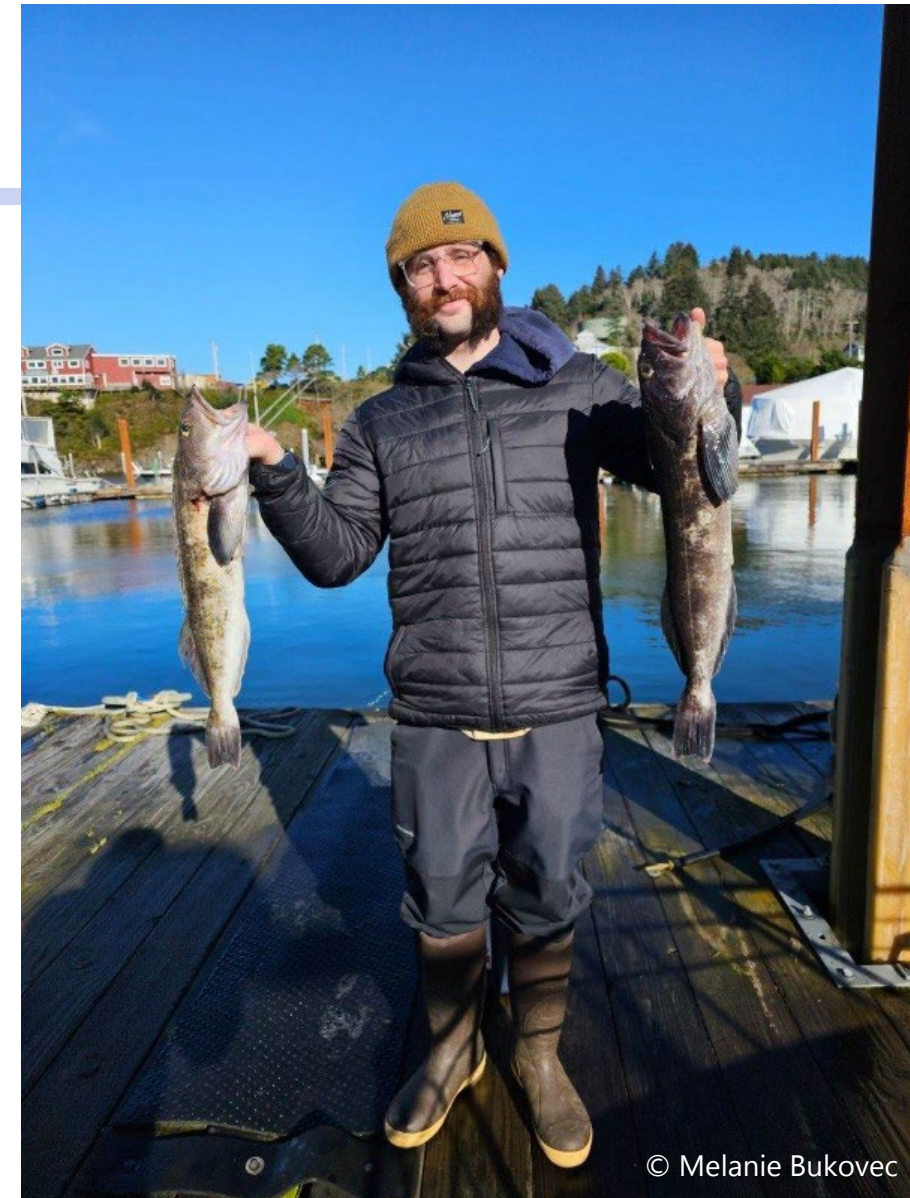
2026 GROUND FISH MORTALITY

	Jan	Feb	Mar	Apr	May	Jun	Jul	Aug	Sep	Oct	Nov	Dec	OCEAN BOAT		
COMPLETED?	N	N	N	N	N	N	N	N	N	N	N	N	TOTAL	LIMIT	±
ACTUAL OR PROJECTED?	P	P	P	P	P	P	P	P	P	P	P	P	277.2	253.0	110%
BLACK RF	3.00	3.78	13.93	24.30	26.50	37.11	65.79	50.96	28.29	14.90	4.94	3.70			



2026 Lingcod Bag Limit

- Lingcod bag limit: 2-fish per angler
- Alternative option is 3-fish per angler



© Melanie Bukovec



Other 2026 Bag Limits

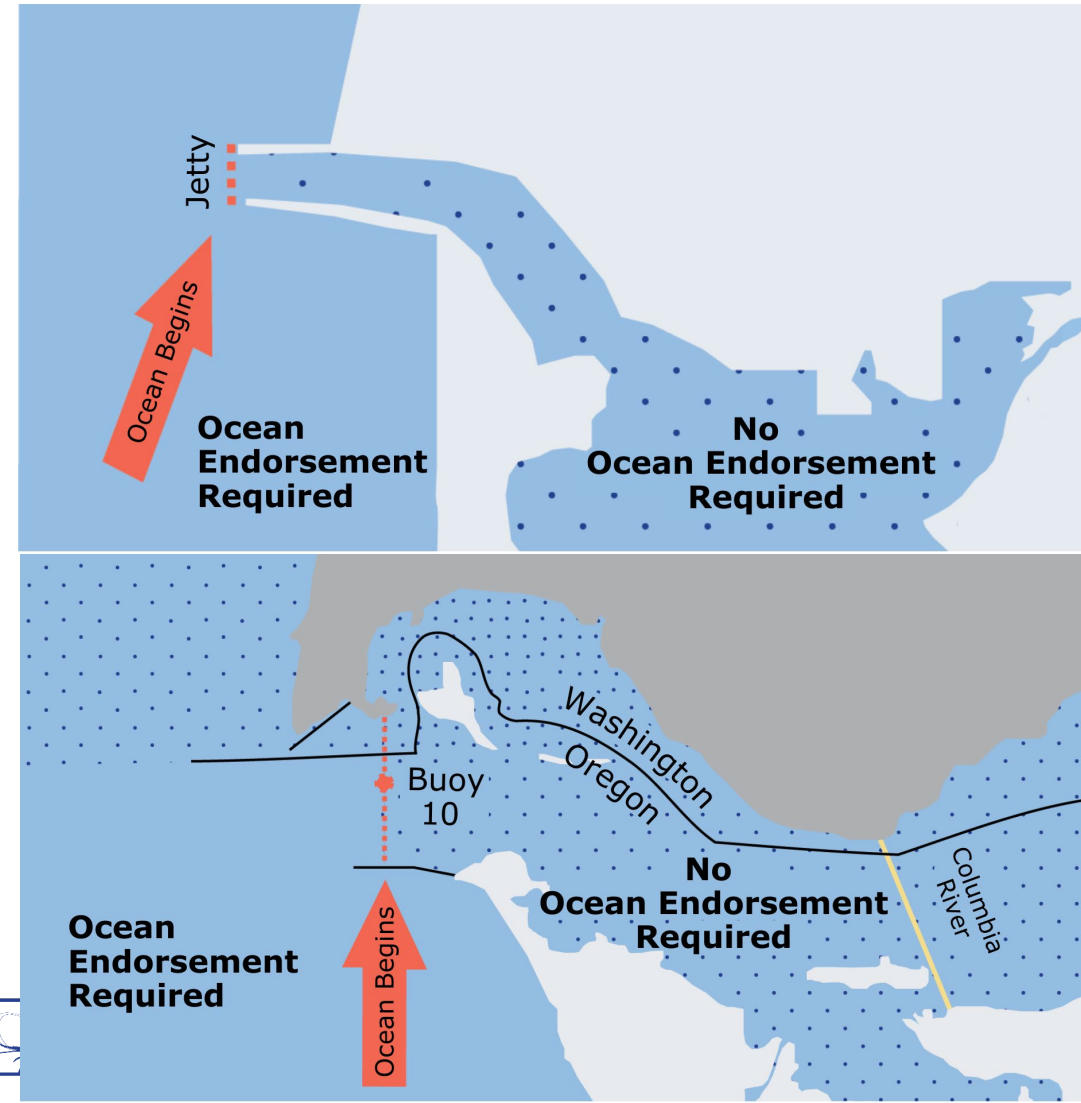
- Long-leader Gear Fishery bag limit: 10-fish per angler
 - Sub-bag limit of 1 canary rockfish
 - Specific to 10 species of rockfish
 - Allowed in combination with other non-bottomfish fisheries
- Sablefish bag limit: 10-fish per angler
- Flatfish bag limit: 25-fish per angler



Ocean Endorsement



- In 2025, the Oregon Legislature established the Ocean Endorsement through House Bill 2342 to generate dedicated funding for marine fish research and assessments.
- Recreational anglers fishing in the ocean from beaches, jetties, and boats will be required to have an Ocean Endorsement, beginning January 1, 2026. (see maps)
- Not required if you are only taking shellfish or only fishing for and retaining salmon or steelhead
- The cost is the same for residents and non-residents:
 - **Annual Endorsement:** \$9
 - **Daily Endorsement:** \$4





Thank you!

Marine Resources Program
Oregon Department of Fish and Wildlife
2040 SE Marine Science Drive
Newport, OR 97365
541-867-4741

christian.t.heath@odfw.oregon.gov

melanie.a.bukovec@odfw.oregon.gov