

Public Meetings to Discuss the Pacific Halibut Catch Sharing Plan for 2014

Tillamook—August 6

Newport—August 7

Brookings—August 12

North Bend—August 13



Meeting Outline

- Halibut Stock Assessment Information
- 2A Catch Sharing Plan Overview
- Recent suggested changes
- Discussion/Suggestions for 2014

Pacific Halibut Fishery Management

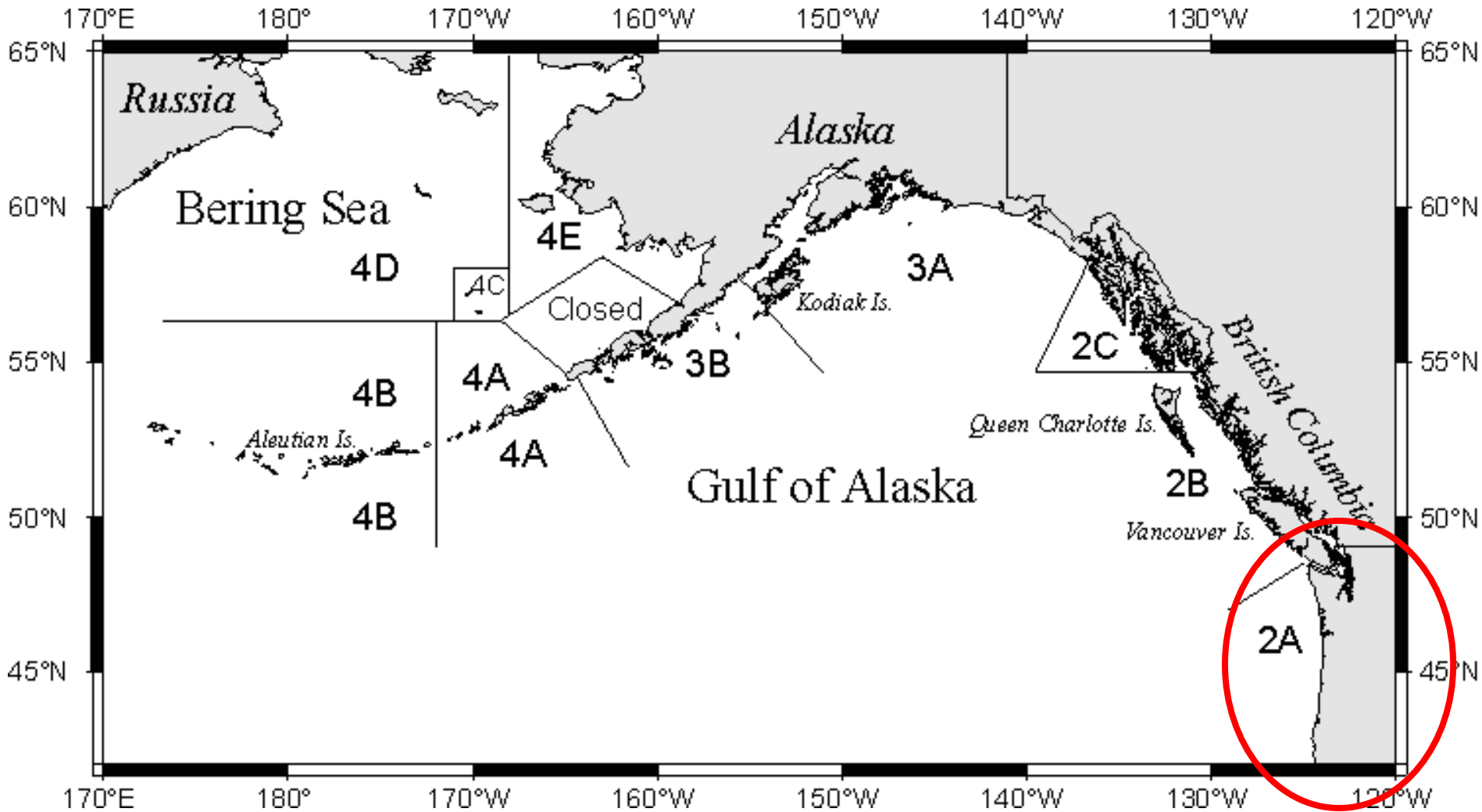
- The International Pacific Halibut Commission (IPHC)
 - Pacific halibut off U.S. and Canada
- Responsible for
 - Overall management
 - Stock assessment
 - Setting allocations
 - Research
- www.iphc.int



International Pacific
Halibut Commission

Pacific Halibut Fishery Management

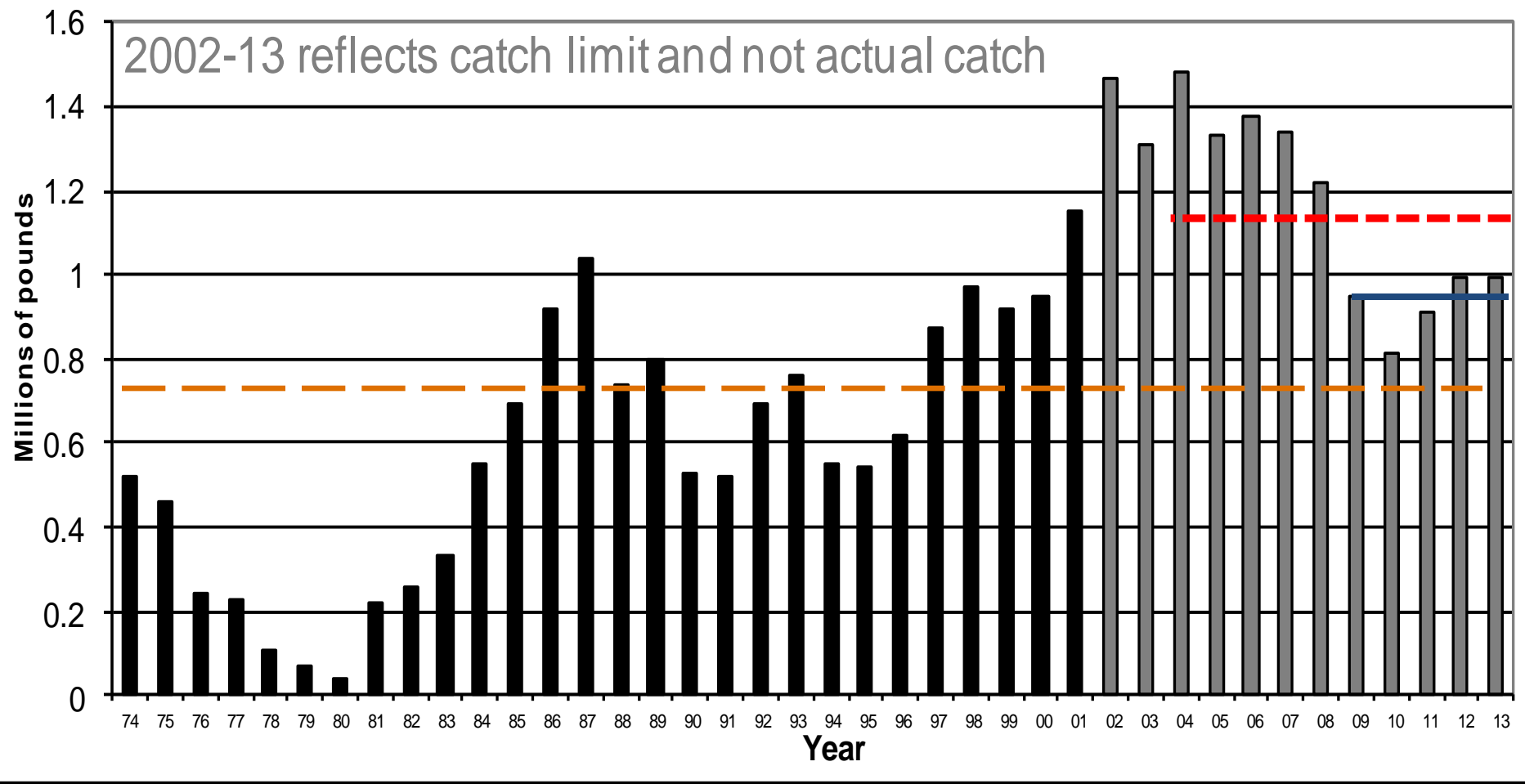
Pacific Halibut Management Areas—The US West Coast is Area 2A



Pacific Halibut Fishery Management

Area	2010	2011		2012		2013	
	Quota	Quota	Percent Change	Quota	Percent Change	Quota	Percent Change
2A	810,000	910,000	10.99%	989,000	7.99%	990,000	0.10%
2B	7,500,000	7,650,000	1.96%	7,038,000	-8.70%	7,038,000	0.00%
2C	4,400,000	2,330,000	-88.84%	2,624,000	11.20%	2,970,000	11.65%
3A	19,990,000	14,360,000	-39.21%	11,918,000	-20.49%	11,030,000	-8.05%
3B	9,900,000	7,510,000	-31.82%	5,070,000	-48.13%	4,290,000	-18.18%
4A	2,330,000	2,410,000	3.32%	1,567,000	-53.80%	1,330,000	-17.82%
4B	2,160,000	2,180,000	0.92%	1,869,000	-16.64%	1,450,000	-28.90%
4C	1,625,000	1,690,000	3.85%	1,107,355	-52.62%	859,000	-28.91%
4D	1,625,000	1,690,000	3.85%	1,107,355	-52.62%	859,000	-28.91%
4E	330,000	340,000	2.94%	250,290	-35.84%	212,000	-18.06%
Total	50,670,000	41,070,000	-23.37%	33,540,000	-22.45%	31,028,000	-8.10%

Pacific halibut Catch in 2A



- 5-year average
- - - 10-year average
- - - Long term average

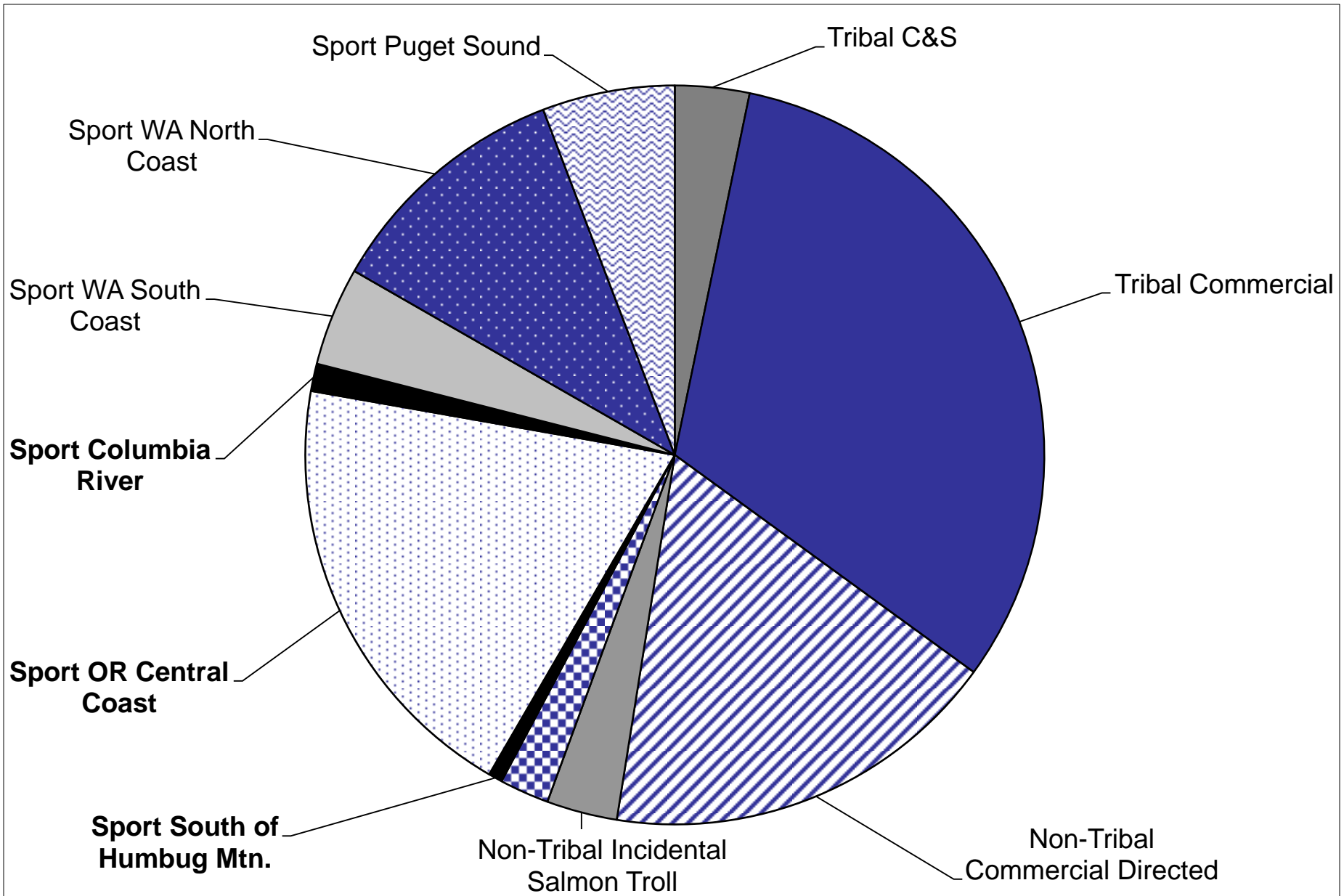
Procedure to Make Changes to the Halibut Catch Sharing Plan (CSP)

- Process to implement changes for 2014 fishery:
 - **August: ODFW solicits public input**
 - September 11-17, 2013: PFMC preliminarily adopts changes for 2014 for further public comment (Boise, ID)
 - Late September: ODFW solicits public input on proposals forwarded by PFMC
 - November 1-7, 2014 : PFMC adopts final changes for 2014 fishery (Costa Mesa, CA)
 - January 13-17, 2014: IPHC Annual Meeting, TAC set (Seattle, WA)

Area 2A Catch Sharing Plan

- *Allocation* between fisheries and between geographical subareas within fisheries
- *Season structuring*
 - Open and closing dates
 - Open days of the week
- *Bag limits*
- *Allowable inseason changes to regulations*

Area 2A Allocations- 2013



Number of Open Days by Fishery

Year	Northern Washington	Southern Washington	Columbia River	Central Oregon All-Depth	Central Oregon Nearshore	South of Humbug Mt.	Directed Comm. Fishery	2A TAC (lbs.)
2000	36	20	90	6	153	153	3	830,000
2001	29	19	45	9	153	153	6	1,140,000
2002	23	52	25	16	153	153	3	1,310,000
2003	20	41	152	31	184	153	4	1,310,000
2004	14	45	86	42	184	184	4	1,480,000
2005	9	30	59	60	170	184	4	1,330,000
2006	7	13	42	36	144	184	3	1,380,000
2007	8	6	36	45	139	184	4	1,340,000
2008	12	15	39	49	184	184	4	1,220,000
2009	6	10	31	21	109	184	2	950,000
2010	7	7	49	16	79	184	1	810,000
2011	8	7	48	17	147	184	2	910,000
2012	7	5	60	17	83	184	2	989,000
2013	4	5	39*	17	21	184	2	990,000

* Does not include summer season

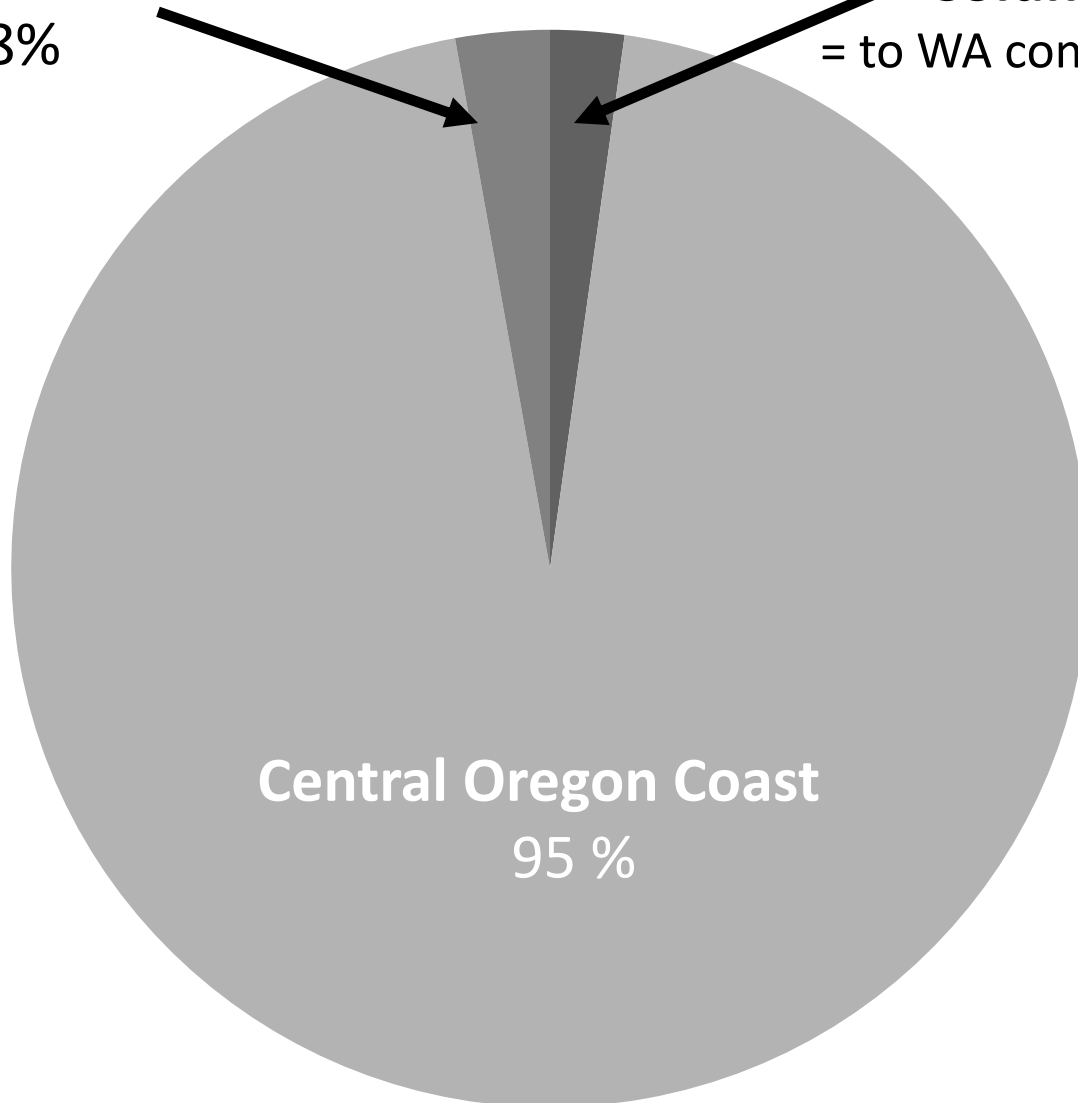
2013 Oregon Sport Catch Sharing

South of Humbug Mt.

2.8%

Columbia River

= to WA contribution (2.2 %)

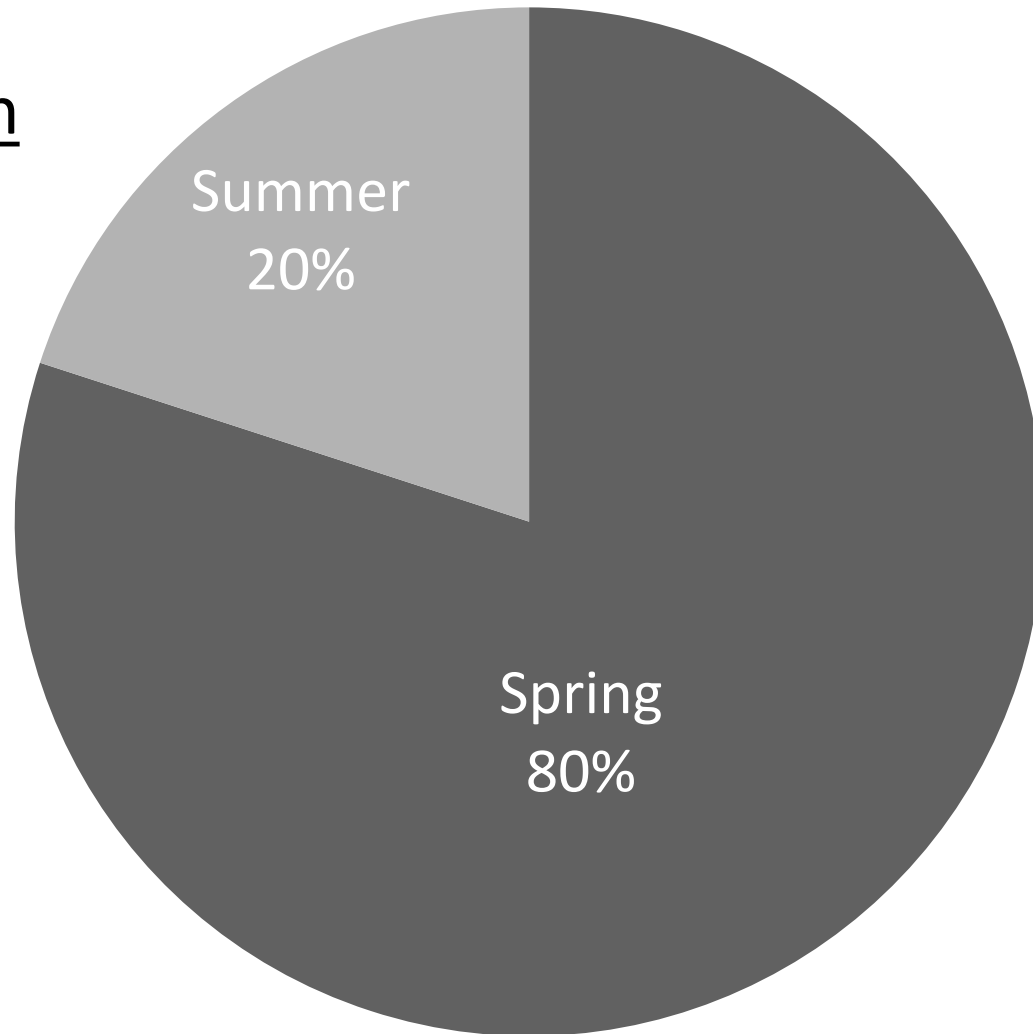


2013 Columbia River Subarea (Leadbetter Pt. to Cape Falcon)

Quota Contribution

WA—50%

OR—50%



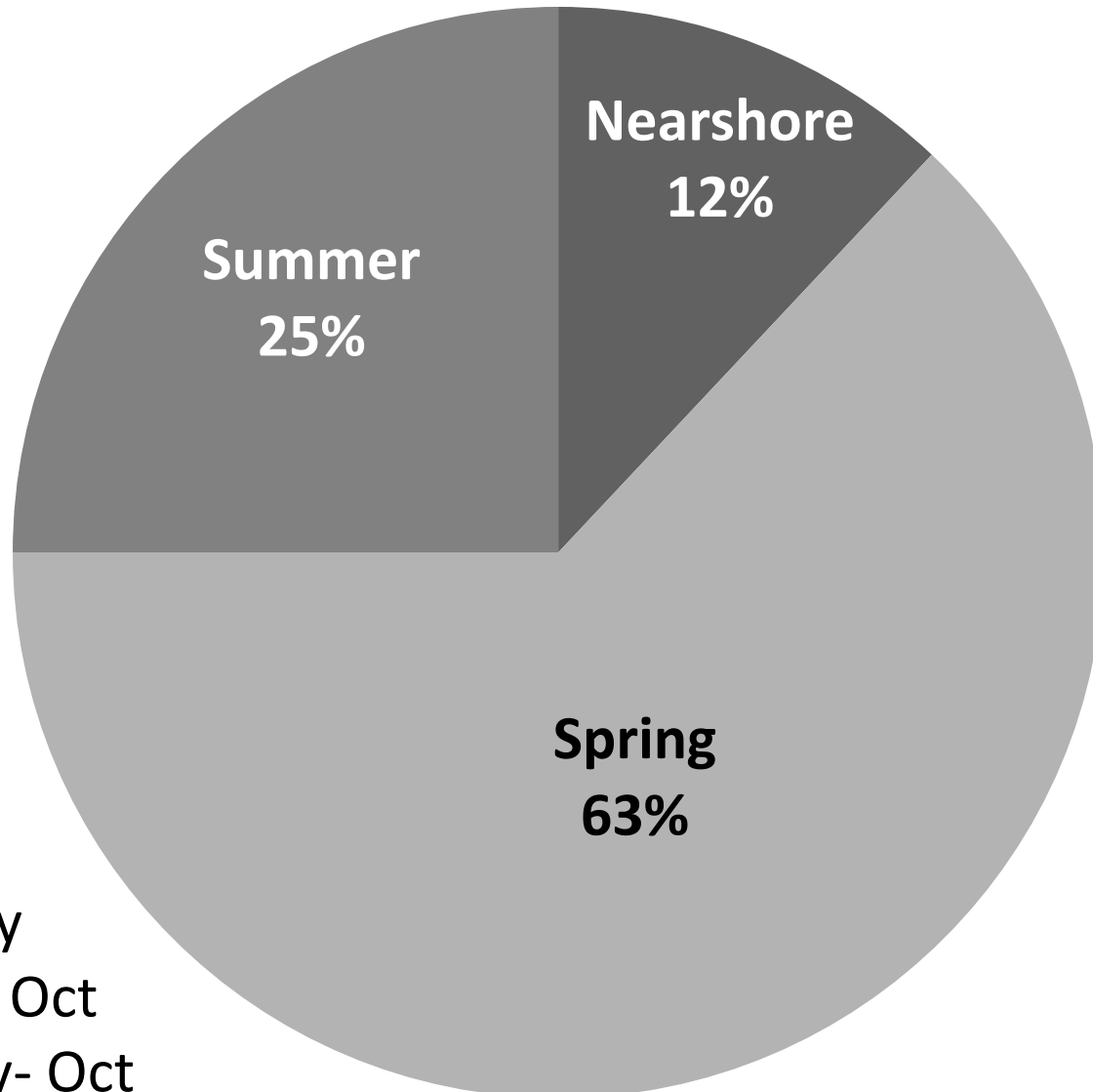
Spring = May-July

Summer = Aug-Sept

2013 Columbia River Subarea

- Spring and summer fisheries
 - open every Thurs, Fri, and Sat
- One-fish daily bag limit
- No length restrictions
- No groundfish allowed, except for Pacific cod and sablefish

2013 Central Oregon Subarea (Cape Falcon to Humbug Mt.)



Spring = May-July

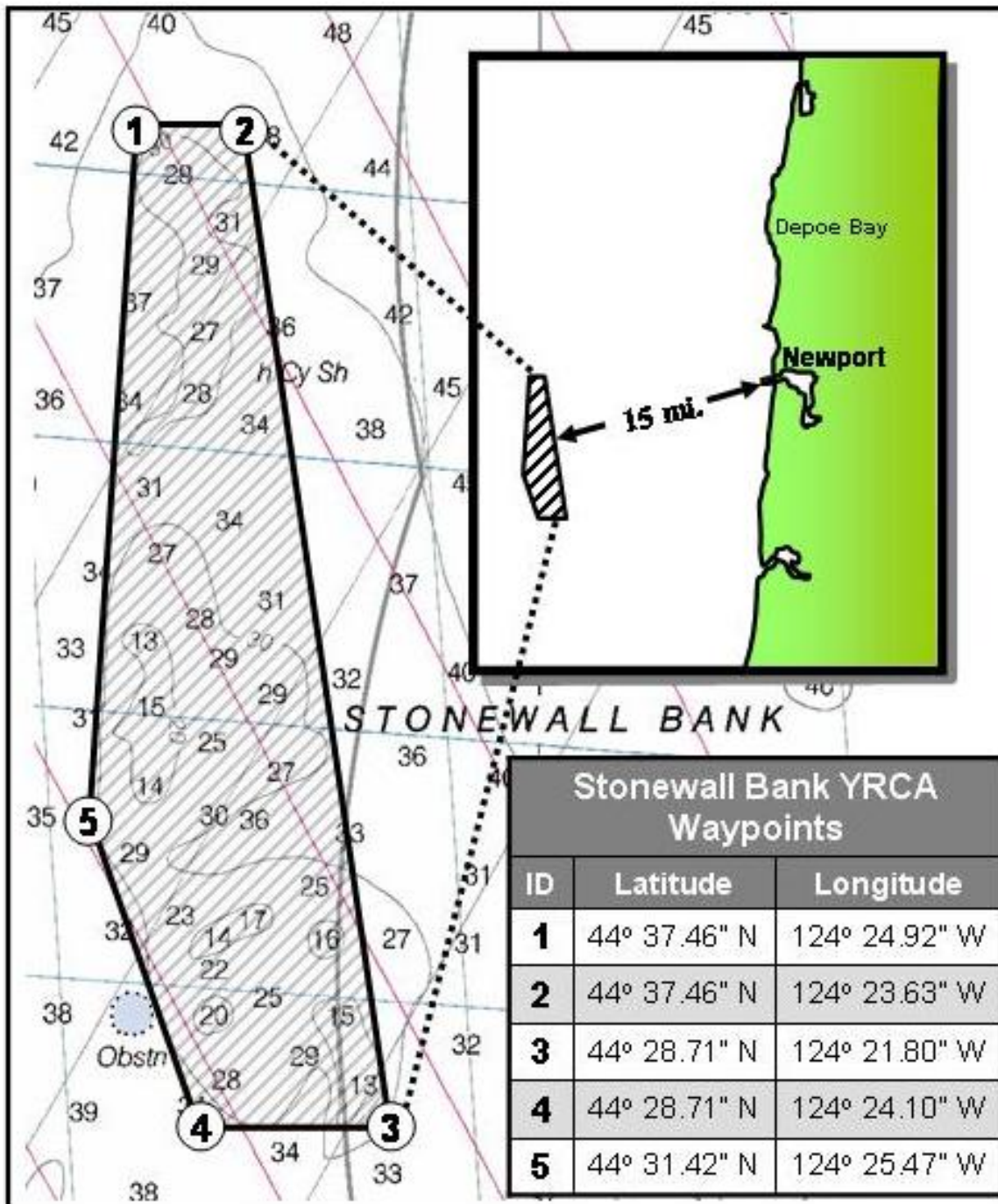
Summer = Aug – Oct

Nearshore = May- Oct

2013 Central OR Spring (May-July) All-Depth Fishery

- “Fixed days” can open the 2nd Thursday in May
 - Open Thurs, Fri, and Sat
- After “fixed days” if poundage remains, the fishery can re-open every other Thurs, Fri, and Sat
- Weeks can be avoided due to adverse tides
- One-fish daily bag limit
- No length restrictions
- No groundfish allowed except Pacific cod and sablefish
- No fishing allowed in the Stonewall Bank YRCA

Stonewall Bank Yelloweye Rockfish Conservation Area (YRCA)



2013 Central Oregon Summer (Aug – Oct) All-Depth Fishery

- Opens 1st Friday in August
 - Open every other Friday and Saturday, with exceptions to avoid adverse tides
- One-fish daily bag limit
- No length restrictions
- No groundfish allowed except Pacific cod and sablefish
- No fishing allowed in the Stonewall Bank YRCA

2013 Central Oregon Summer (Aug – Oct) All-Depth Fishery

- Potential Inseason Changes
 - Opens every week, Fri. and Sat., if 60,000 + lbs. remain available after the first open weekend
 - Including remaining poundage in the nearshore fishery
 - Opens every week, Fri. and Sat., if 30,000 + lbs. remain available after Labor Day weekend
 - Including remaining poundage in the nearshore fishery
 - Post Labor Day Decision on 2-fish daily bag limit
 - Increase bag limit if necessary to take the remaining quota by the end of September

2013 Central Oregon Nearshore (Inside 40-fm) Fishery

- Open 1st Thursday in May
- Open 3 days per week (Thurs-Sat)
- One fish daily bag limit
- No length restrictions
- On days also open to all-depth, no groundfish allowed except Pacific cod and sablefish

2013 South of Humber Mt. Fishery

- Open May through October
- Open 7 days per week
- One fish daily bag limit
- No length restrictions

Recent Suggested Changes to the CSP

2012 Suggestions Implemented for 2013

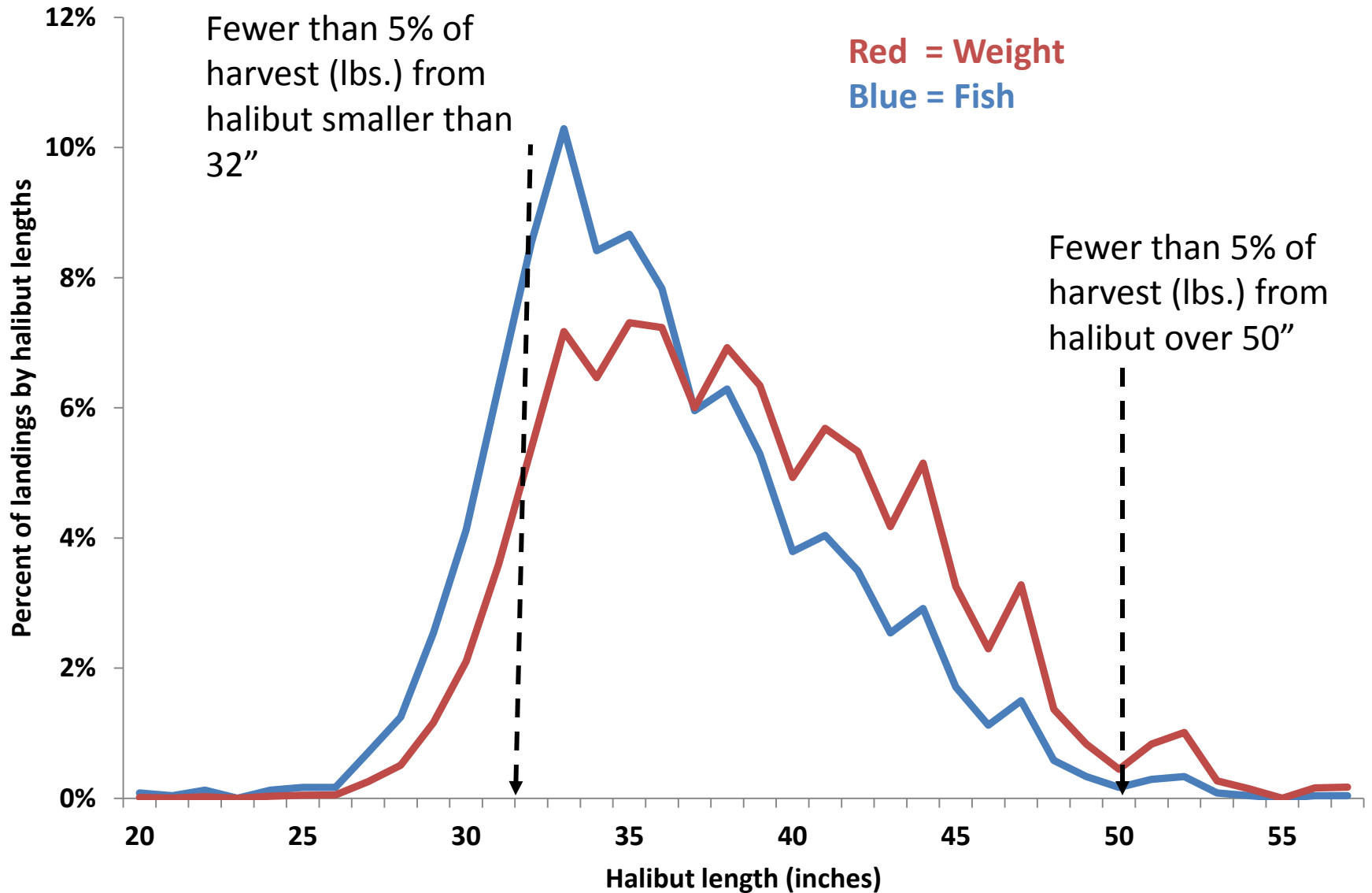
- Remove the mid-July closure date for the Columbia River spring fishery, if quota remains
- Change the summer Columbia River open dates to Friday-Sunday, consistent with the spring fishery
- Change the Central Coast Nearshore from 7 days per week to 3 day per week (Thurs-Sun) to attempt to extend the season farther into the summer

Return to 32 inch minimum size limit

- Size at age of halibut is currently much smaller than it was 20 years ago
- What is driving the decline in size at age?
 - Density dependence (competition with other halibut and other fish, especially arrowtooth flounder)
 - Environmental changes
 - Other unidentified processes
 - Combination of factors
- *Information from IPHC stock assessment*

Size Limits?

IMPACT: Maximum or minimum size limits would have little influence on harvests

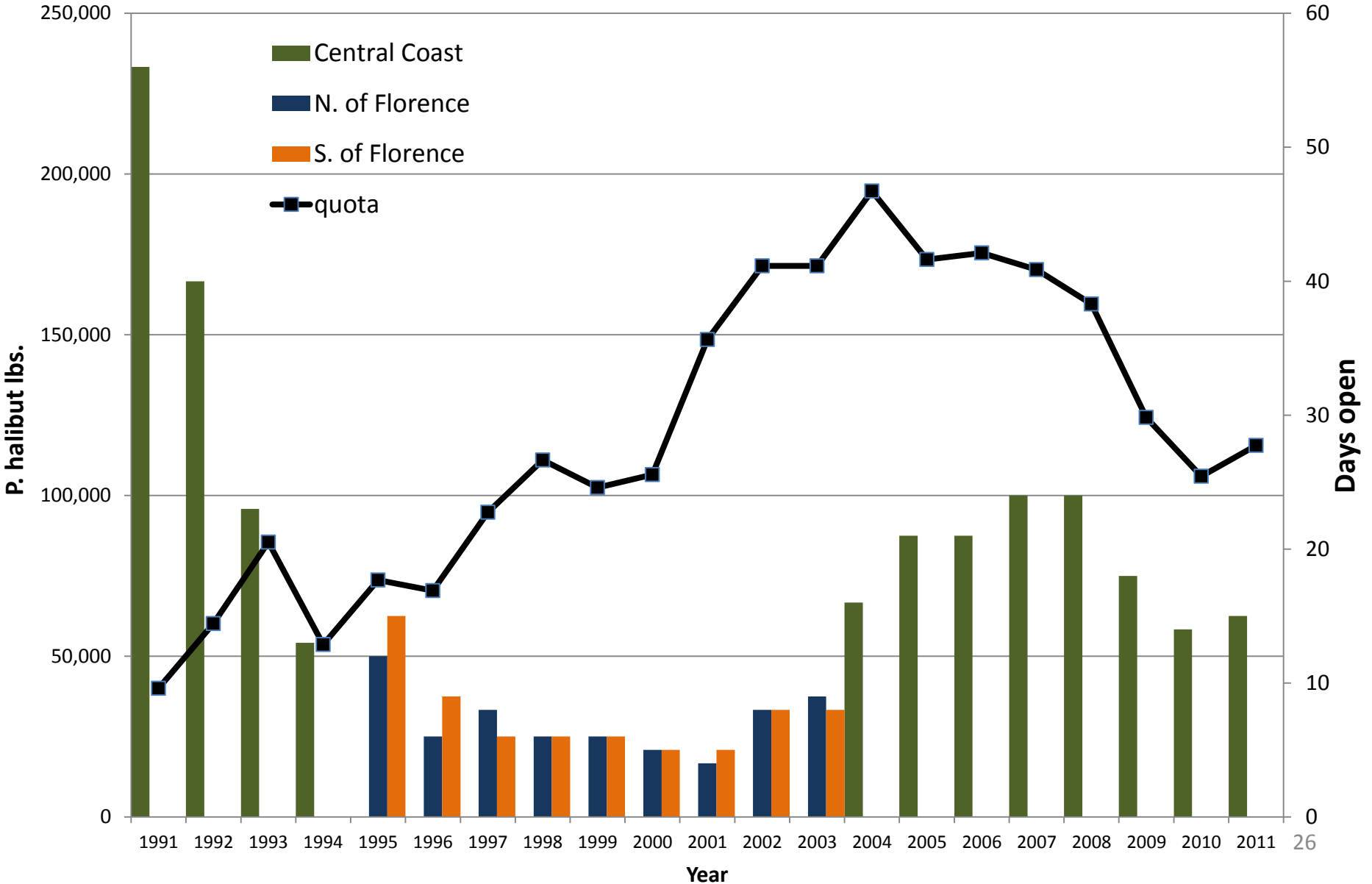


Split the Central Coast into smaller areas

- All-Depth, Nearshore, or both?
- Where to make the split(s)?
 - North Florence Jetty, as from 1995-2004
 - Florence, Charleston, Bandon, Port Orford to the south
 - Cascade Head
 - Garibaldi, Pacific City to the north
 - Both?
- How do we make the allocation split(s)?
 - IPHC survey data
 - Harvest data
 - Effort data

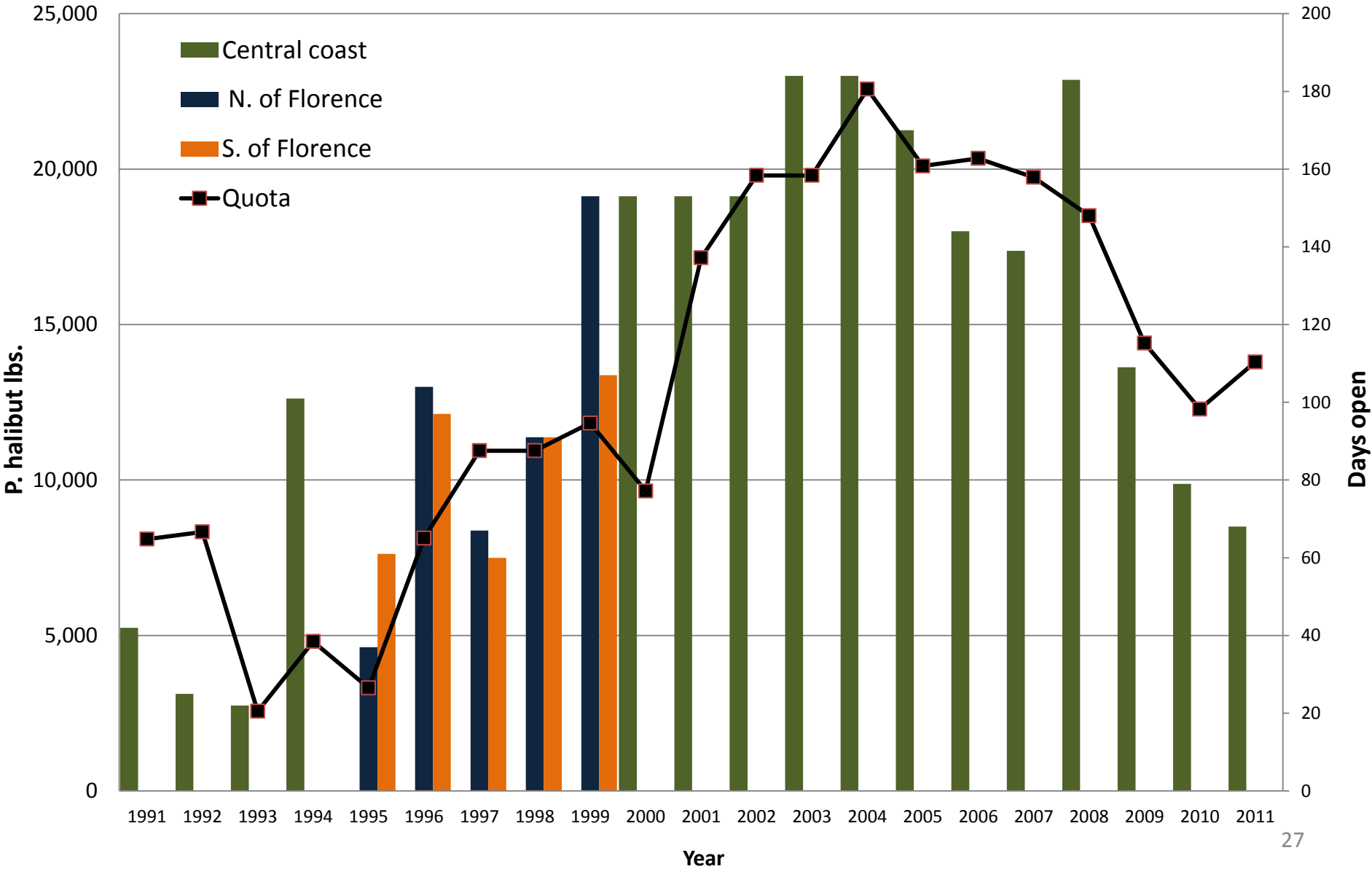
Split the Central Coast into smaller areas

Spring All-Depth Fishery Quota and Days Open by Area, 1991-2011



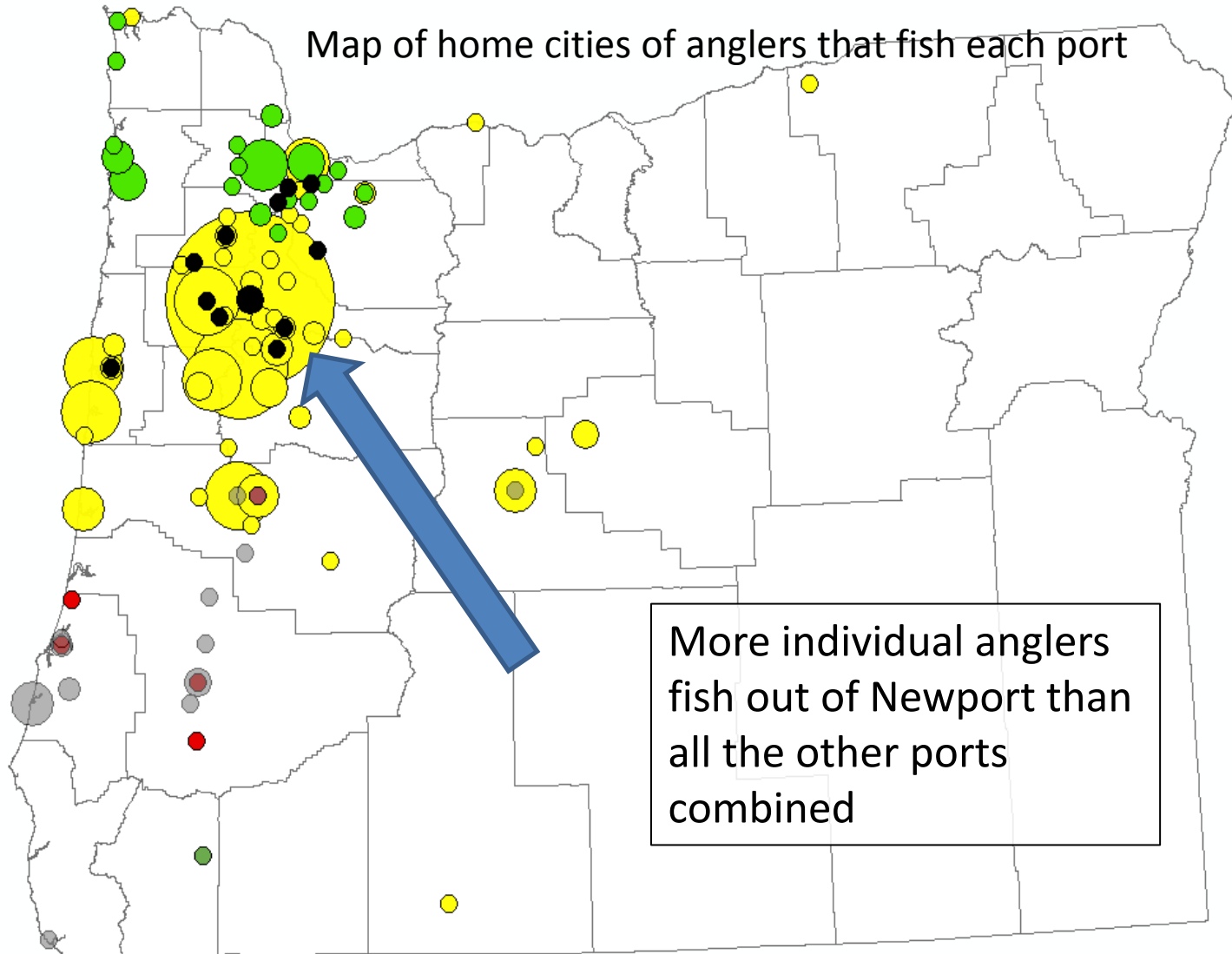
Split the Central Coast into smaller areas

Nearshore Fishery Quota and Days Open by Area, 1991-2011



Split the Central Coast?

because “Newport catches the majority of fish”

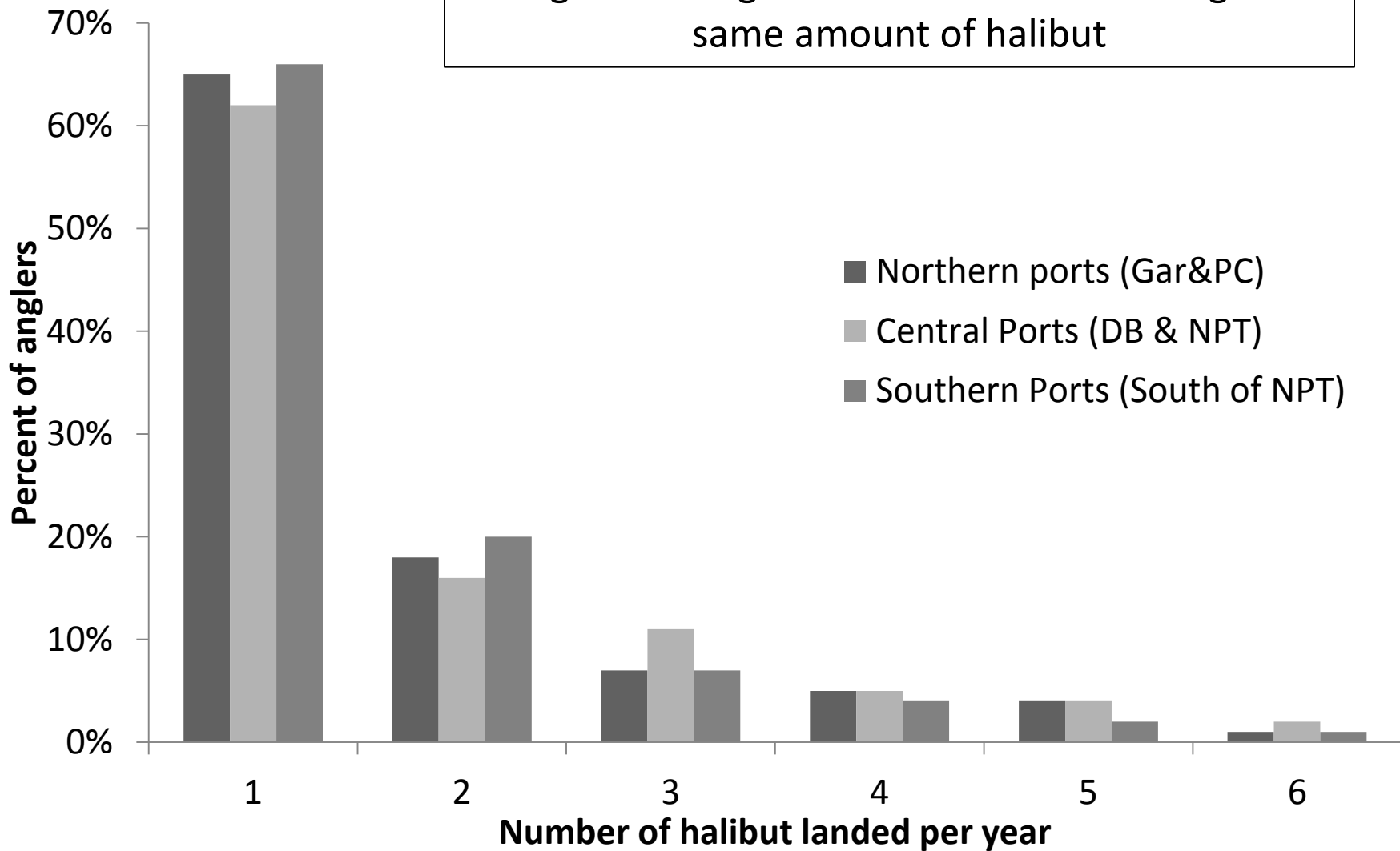


Green=Garibaldi Yellow=Newport Black=Depoe Bay Red=Charleston Grey=Bandon

Split the Central Coast?

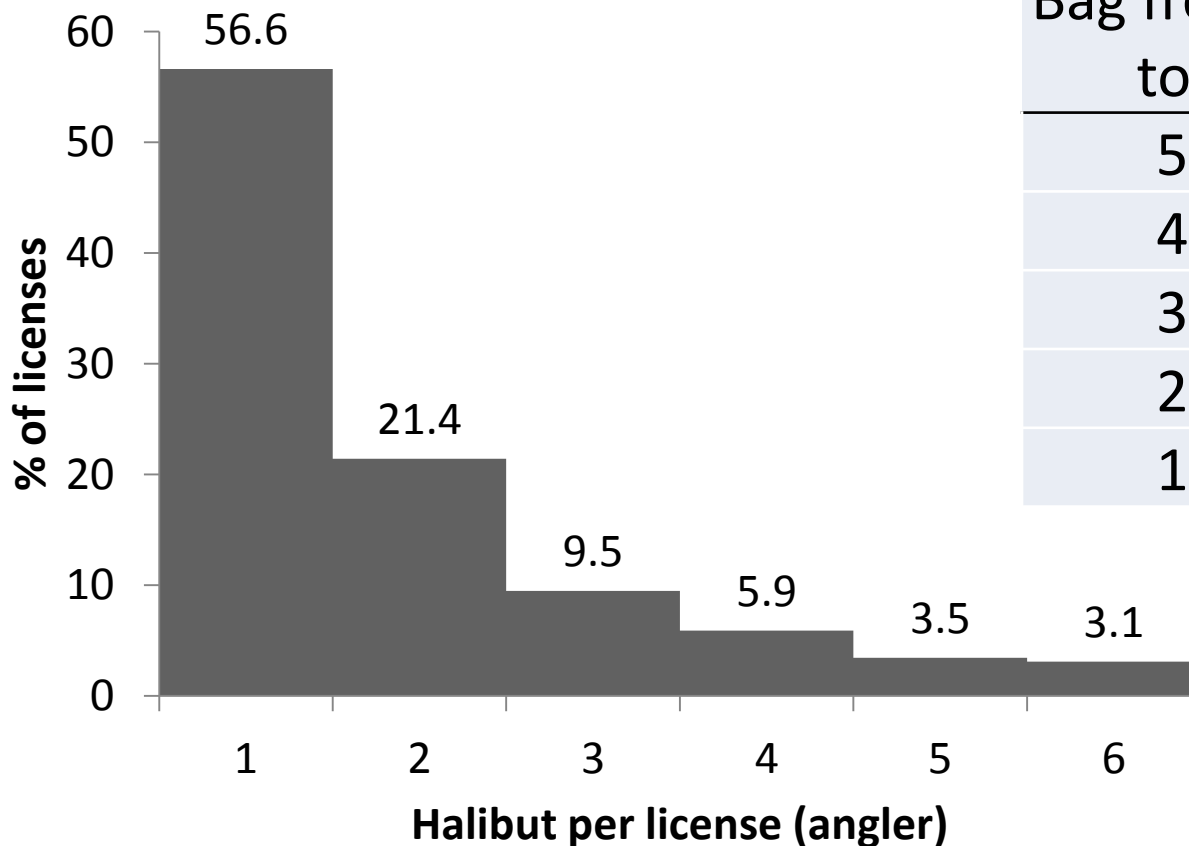
because “Newport catches the majority of fish”

Anglers throughout the coast are catching the same amount of halibut



Reduce the Annual Bag Limit

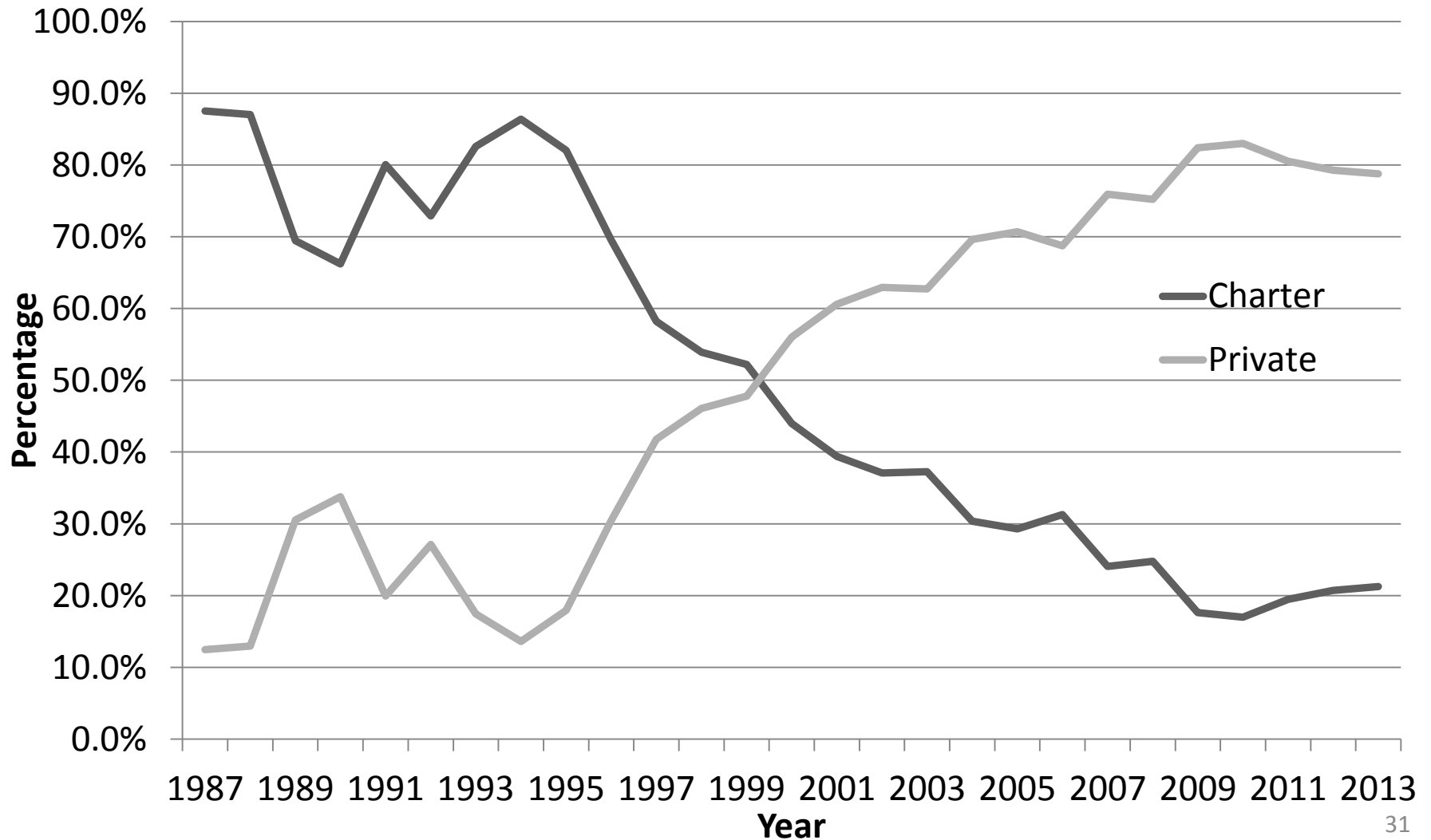
- Majority of anglers (78%) only catch 1 or 2 halibut a year



Bag from 6 to:	% reduction in harvest
5	1.6%
4	5.1%
3	11.8%
2	23.5%
1	46.6%

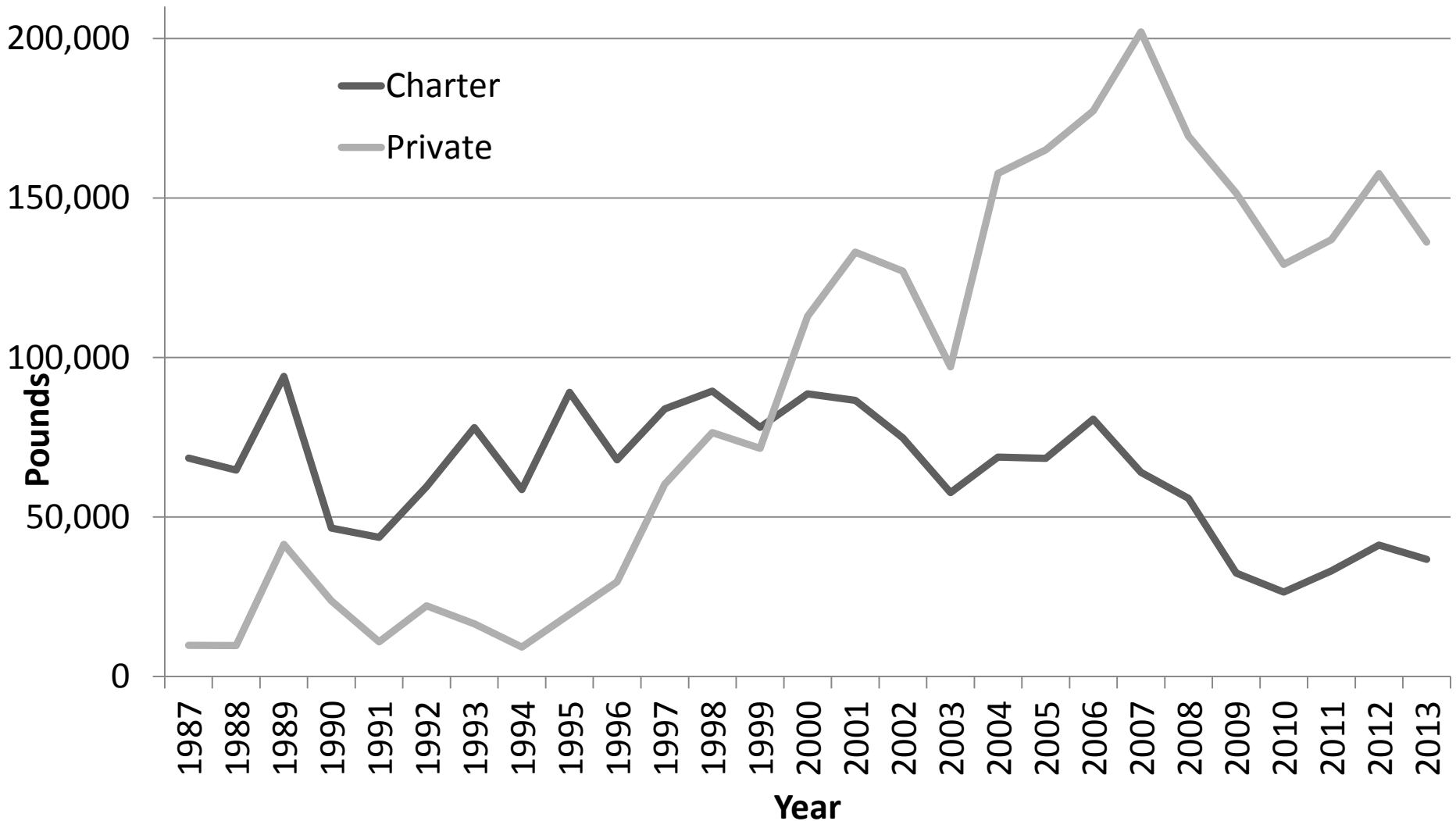
Create Separate Quotas for Charter and Private Anglers

Percentage of Harvest by Charter and Private Anglers, 1987-2013



Create Separate Quotas for Charter and Private Anglers

Pounds of Harvest by Charter and Private Anglers, 1987-2013



PFMC Mailing Address

Pacific Fishery Management Council
7700 NE Ambassador Place, Suite 101
Portland, OR 97220

Mailed proposals must be received at PFMC
office by August 21.