



Marine
Resources

Public Meeting on 2021 Recreational Halibut Seasons

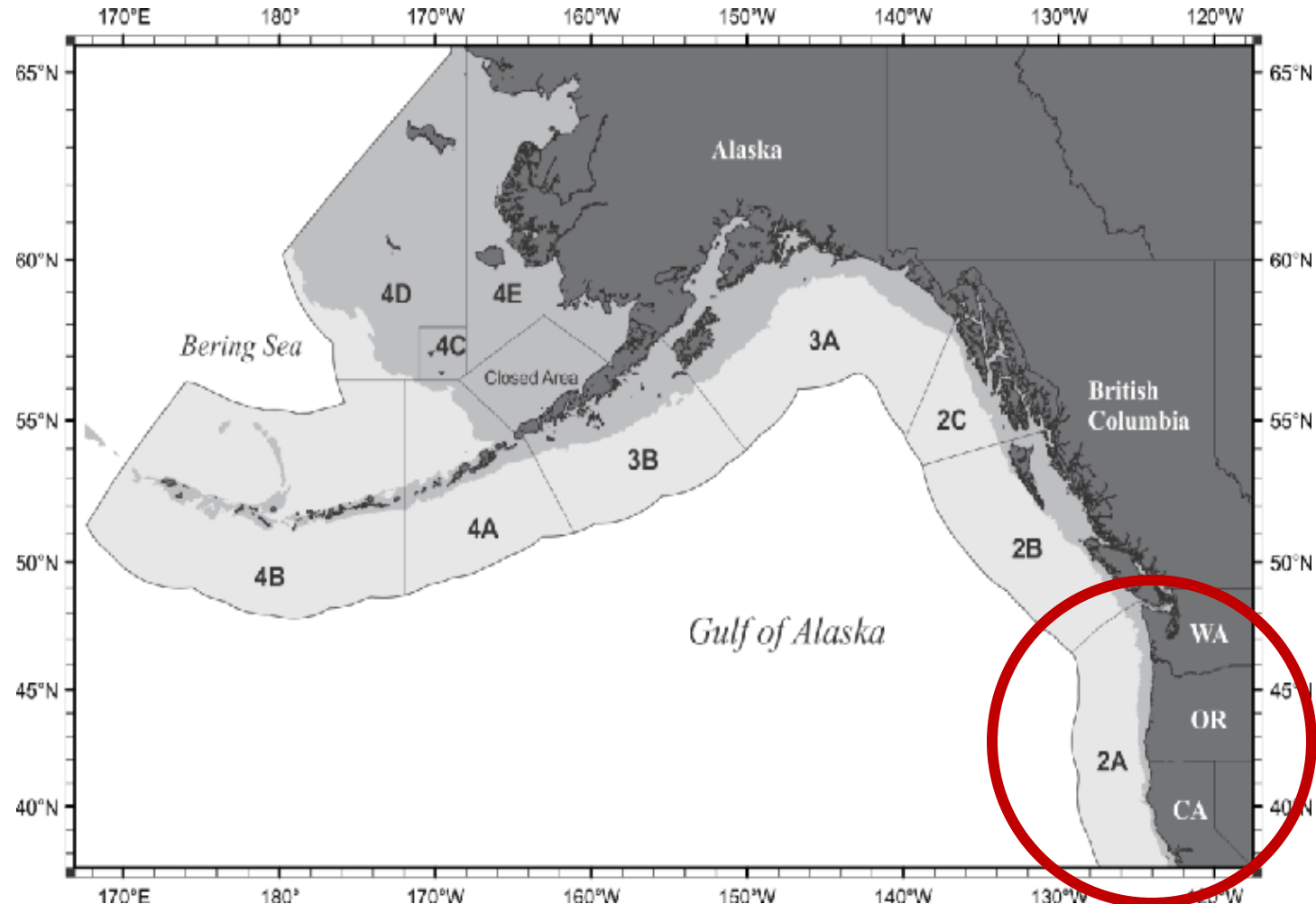
28 July 2020



© Lynn Mattes

Meeting Outline

- Status of the Pacific halibut stock
- Area 2A allocations
- Recent changes
- Discussion for 2021

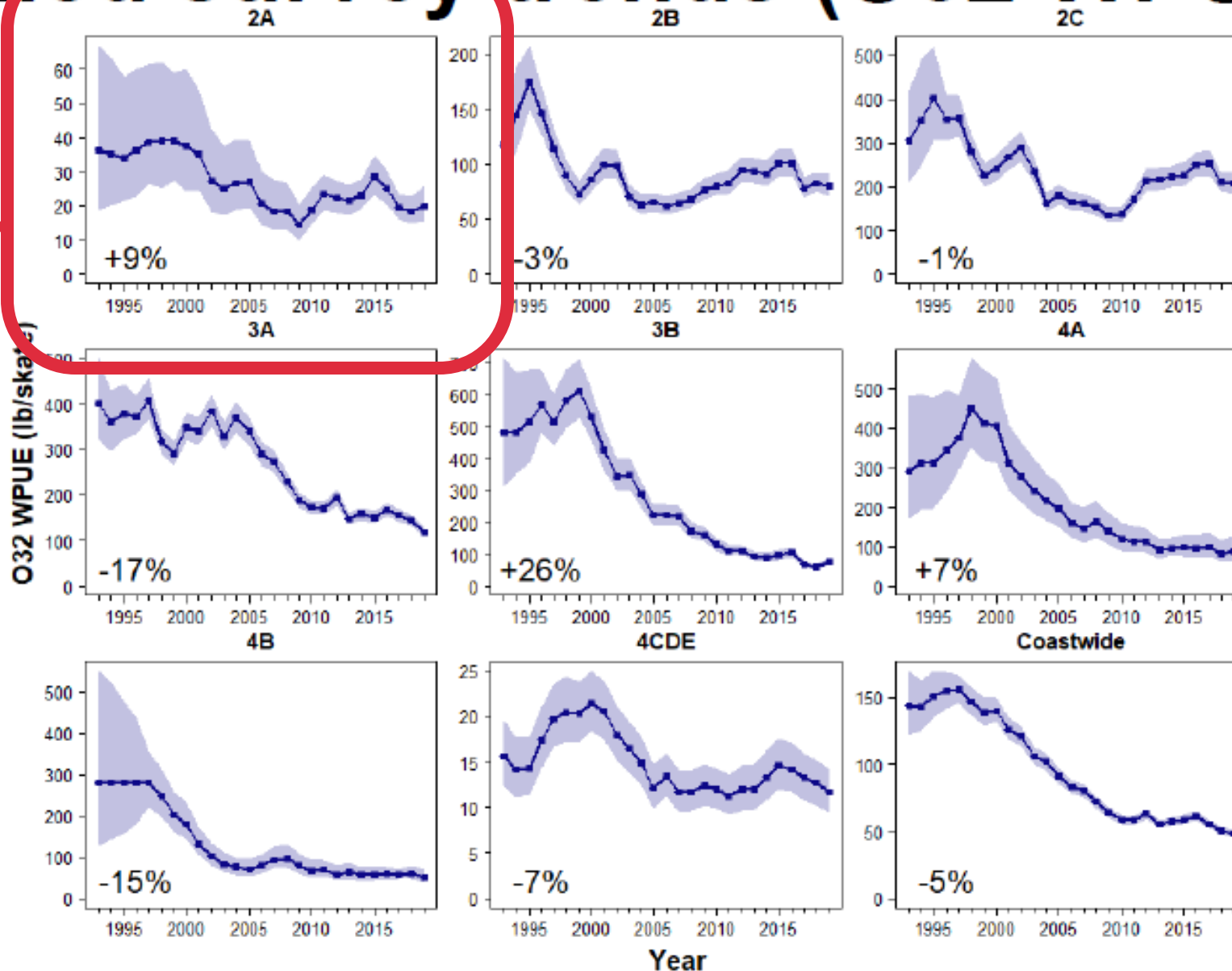


Status of the Pacific halibut stock

- IPHC Annual Meeting Results
- Stock continuing to decrease coastwide (AK-CA)
 - Modelled survey trends down: numbers and WPUE
 - Fishery CPUE trends mixed but flat coastwide
 - Estimated spawning biomass decreased from 2018-2019
- Area 2A trends stable or slightly increasing
- Limited recruitment since 2005
 - 2011 and 2012 year classes looking like they might be good
 - Starting to be caught in the fishery in 2020
 - 24-28 inch size range



Modelled survey trends (O32 WPUE)

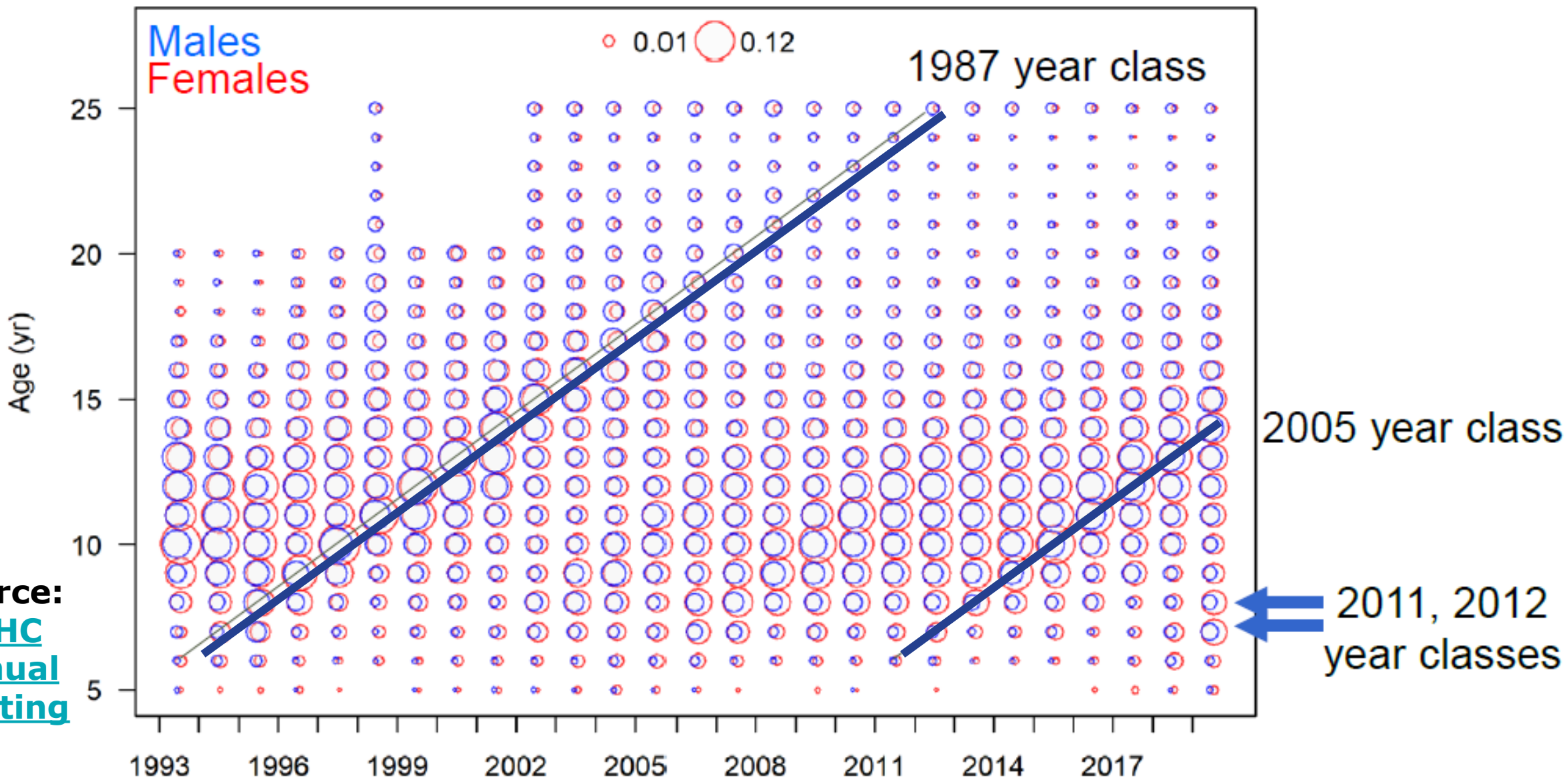


Our area

Source:
[IPHC](#)
[Annual](#)
[meeting](#)



Recent survey ages

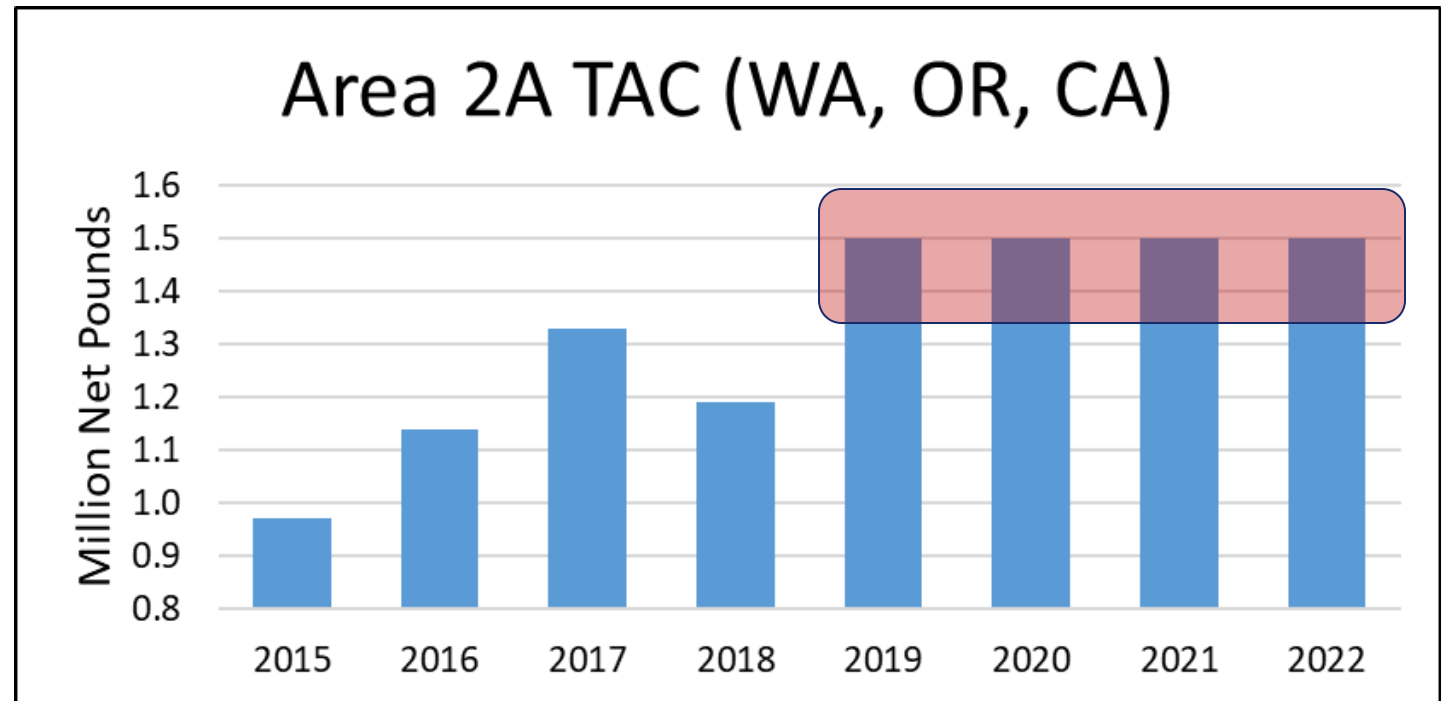


Source:
[IPHC](#)
[Annual](#)
[meeting](#)



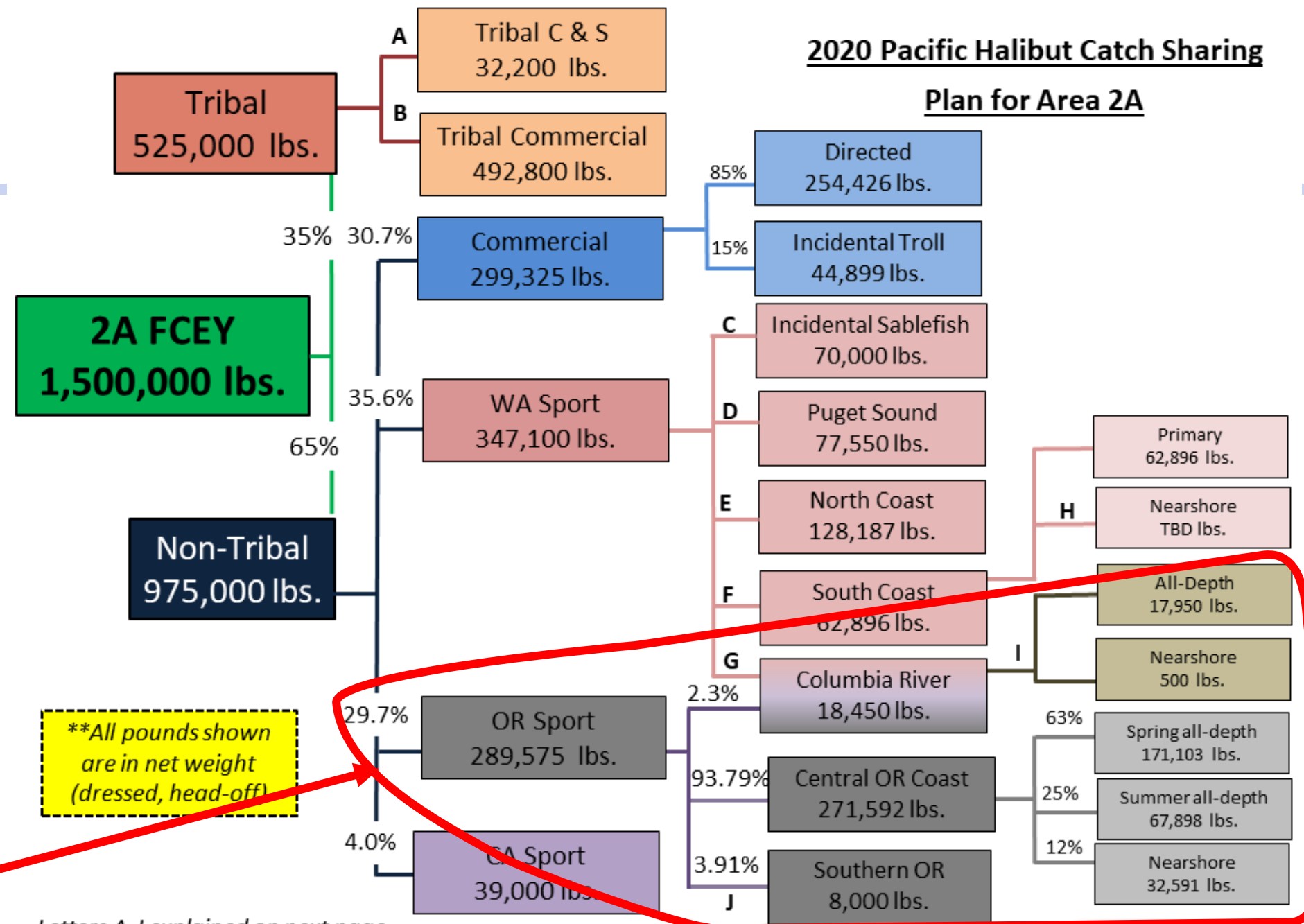
Area 2A Allocation

- 2020 IPHC meeting results
- Continued 1.5 million lbs. total allowable catch (TAC) for Area 2A
 - Expected through 2022
 - *Unless conservation concern*
 - Stabilizes fisheries
 - No biological concern
 - Low compared to AK & BC



Area 2A Allocations

2020 Pacific Halibut Catch Sharing Plan for Area 2A



****All pounds shown are in net weight (dressed, head-off)**

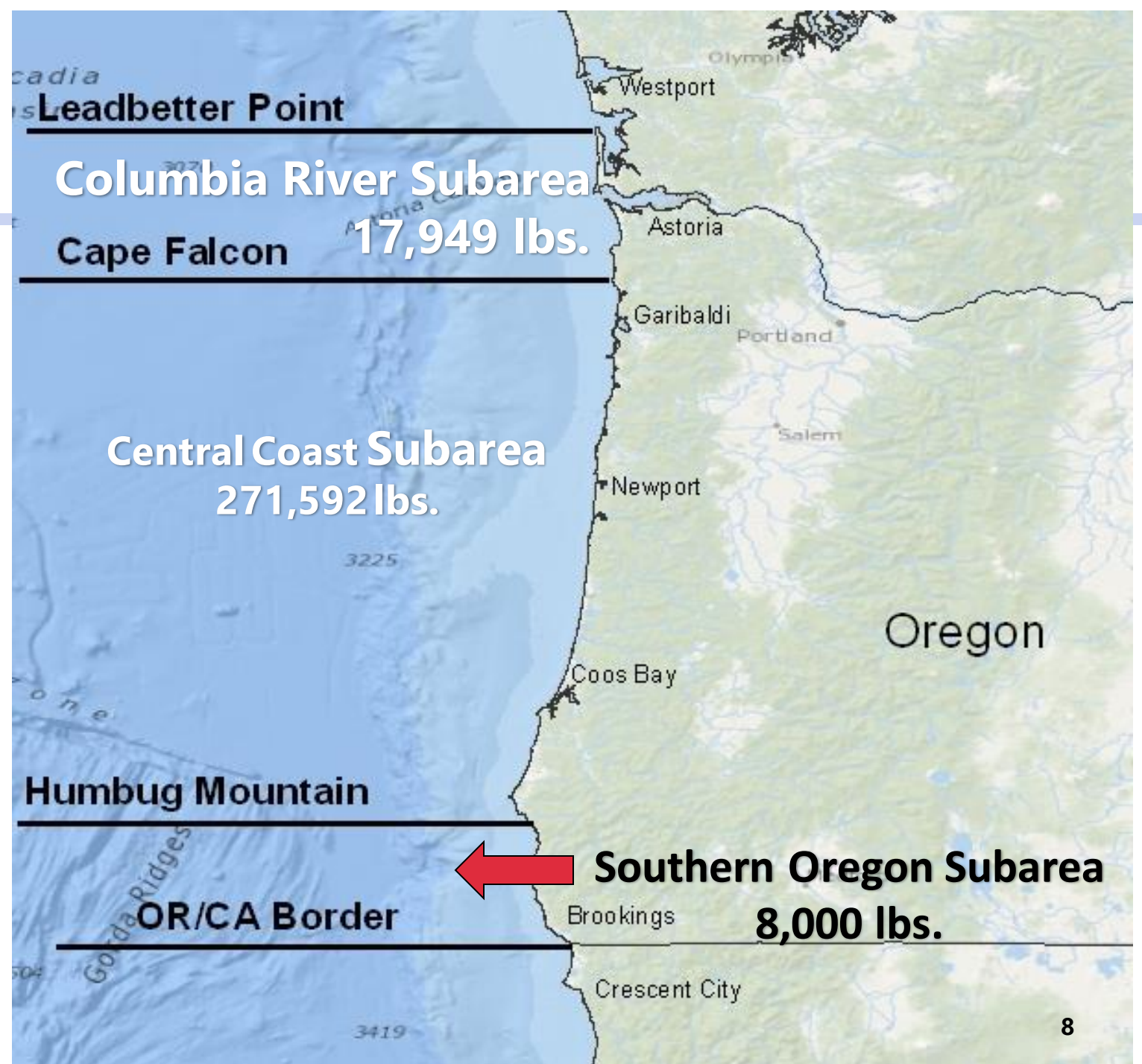
Oregon allocations

Letters A-J explained on next page



Marine Resources

Oregon has 3 subareas for the recreational Pacific halibut fishery



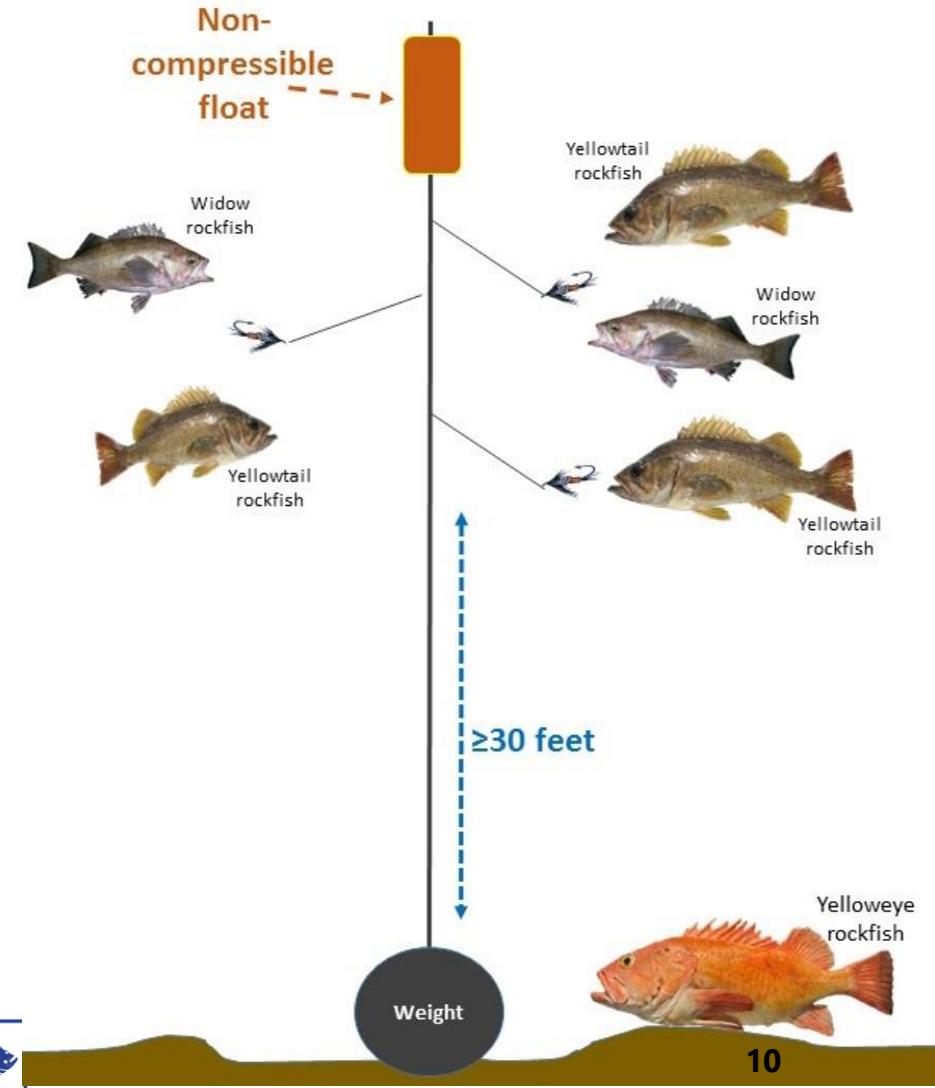
Changes Implemented for 2020

- Columbia River Subarea all-depth season adjusted to 2 days per week, in conjunction with other WA subarea openings
 - Requested by anglers, to prevent effort shift
 - Intended to expand the fishery longer into June
- Central Coast Subarea all-depth and nearshore added triggers to allow additional opportunity at higher quotas
- Shift any quota over 8,000 lbs. from Southern Oregon Subarea to Columbia River Subarea




Recent Suggestion not Implemented

- Allow all-depth halibut and longleader gear fishing on same trip
 - Not allowed for 2020 due to a federal regulation timing mismatch
 - Has been included in the groundfish regulations for 2021-2022
 - **ODFW is recommending this be included in the halibut regulations for 2021**



Halibut Catch Sharing Plan (CSP)

- Process to implement changes for 2021 fishery:
 - **Late July: ODFW solicits public input** 
 - September 2020: PFMC preliminarily adopts changes for 2021 for further public comment (Webinar) www.pcouncil.org
 - Late Sept / early Oct: ODFW solicits public input on specific proposals forwarded by PFMC
 - November 2020: PFMC adopts final changes for 2020 fishery (Costa Mesa, CA or Webinar, TBD) www.pcouncil.org
 - January 2021: IPHC Annual Meeting, quotas set (Victoria, BC) www.iphc.int



Discussion

- Any proposals for changes from the 2020 season structure for 2021?
-





Marine
Resources

Thank you

Marine Resources Program Oregon Department of Fish and Wildlife

2040 SE Marine Science Drive
Newport, OR 97365
(541) 867-4741

Contact us!

- lynn.mattes@state.or.us
- christian.t.heath@state.or.us
- maggie.sommer@state.or.us