



Marine
Resources

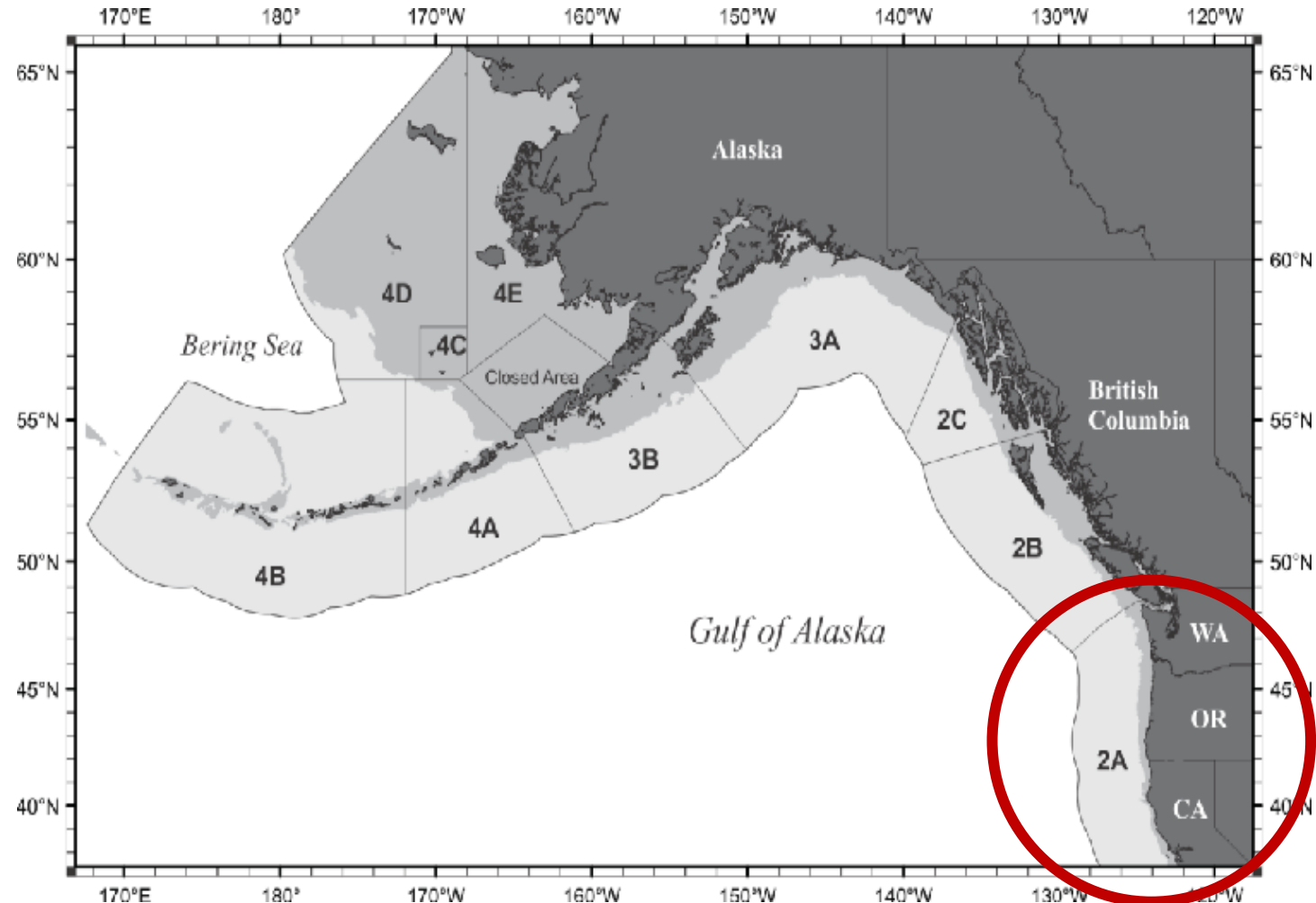
Public Meeting on 2022 Recreational Halibut Seasons

9 Aug 2021



Meeting Outline

- Status of the Pacific halibut stock
- Area 2A allocations
- Recent suggested changes
- Discussion for 2022



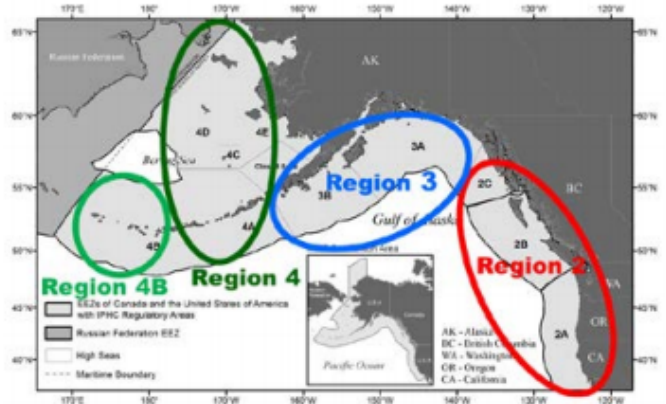
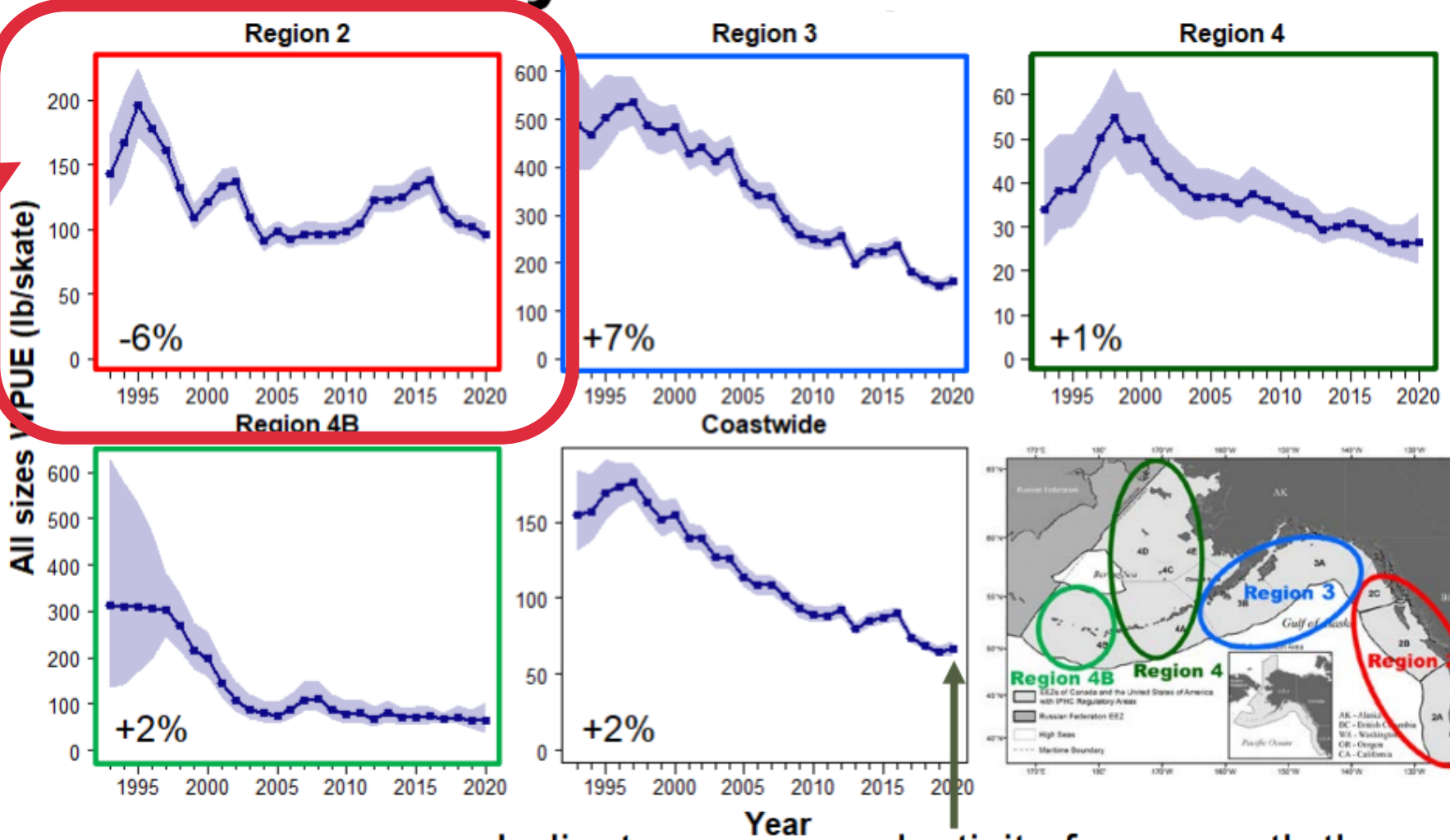
Status of the Pacific halibut stock

- IPHC Annual Meeting Results
- Fishery and survey trends continue downward coastwide
 - Area 2A fishery trends a bit better than coastwide
- Overall coastwide spawning biomass still estimated to be decreasing
- Estimates of good 2011 & 2012 year classes, about to come into the fishery
 - Anglers encountered a lot of 24-30 inch fish in 2020
 - Fishery and survey trends are consistent with individual growth within these year-classes
- Size-at-age may be starting to improve at younger ages



Modelled survey trends Pounds per skate

Our area



Source: [IPHC Annual meeting](#)

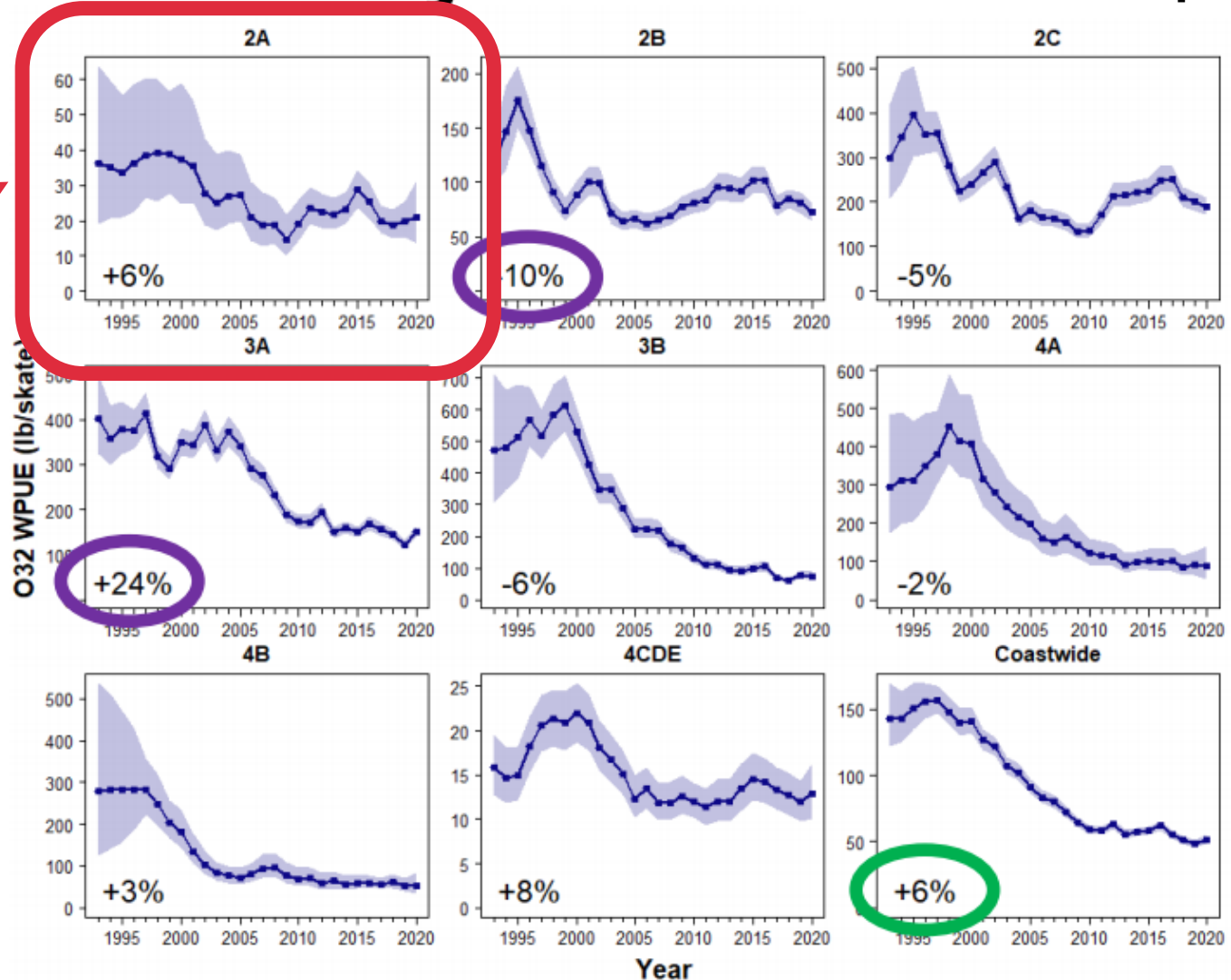
Indicates more productivity from growth than recruitment



Modelled survey trends

Pounds per skate

Our area



Fish
over 32
inches

Source:
[IPHC](#)
[Annual](#)
[meeting](#)

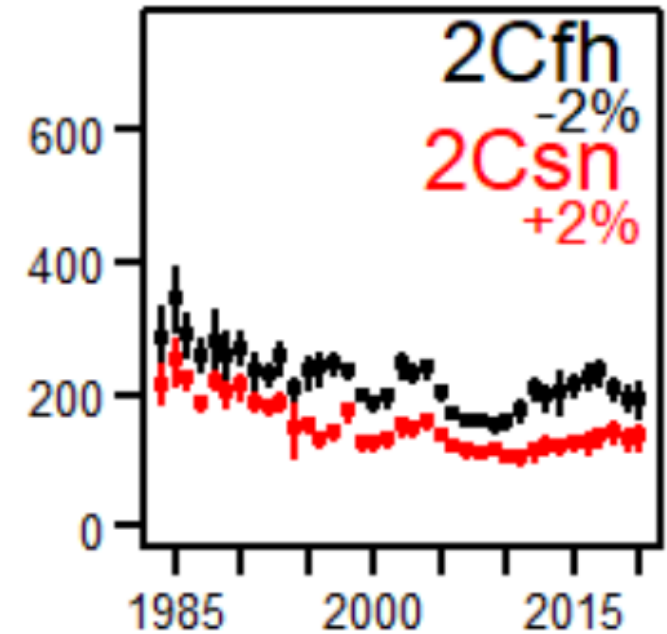
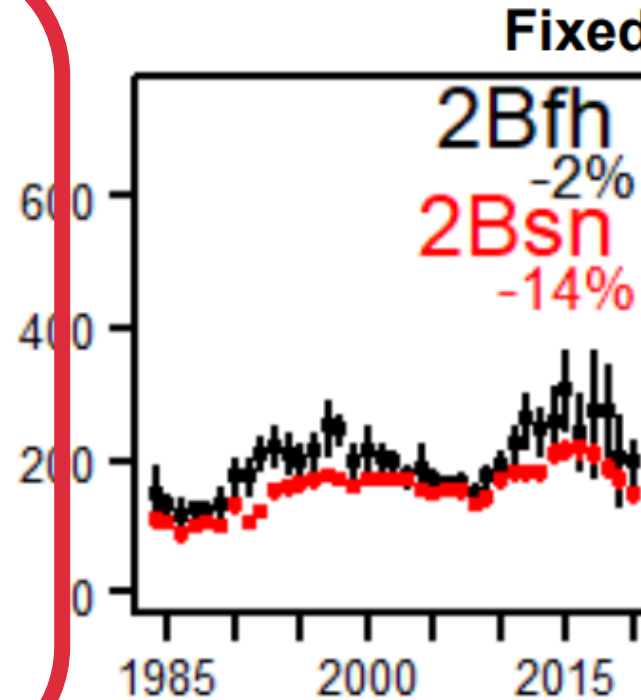
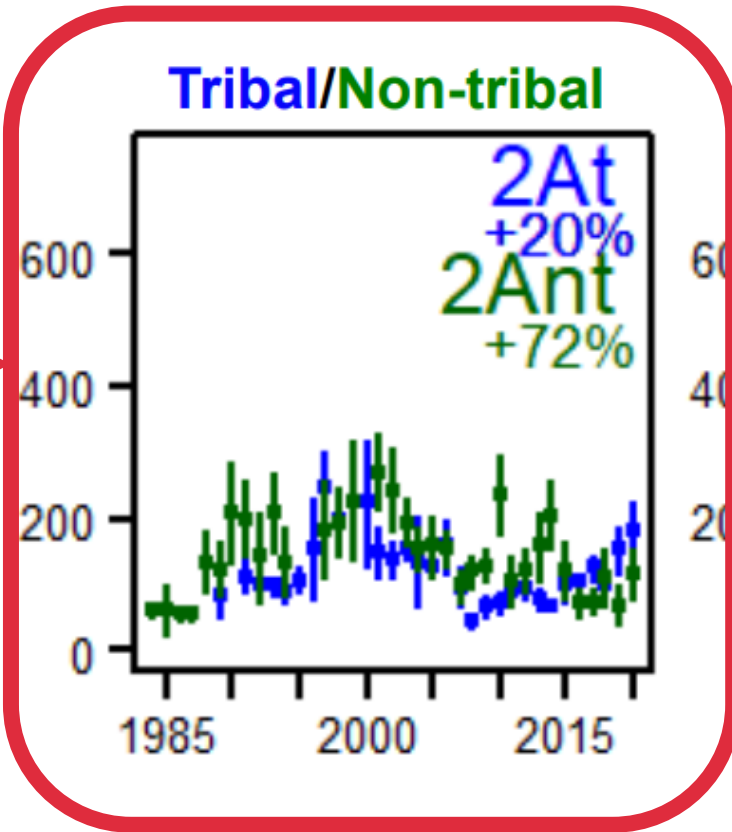
Indicates growth
productivity is
from O32 sizes



Fishery trends: Region 2

Our
area

Commercial WPUE (net lb/skate)

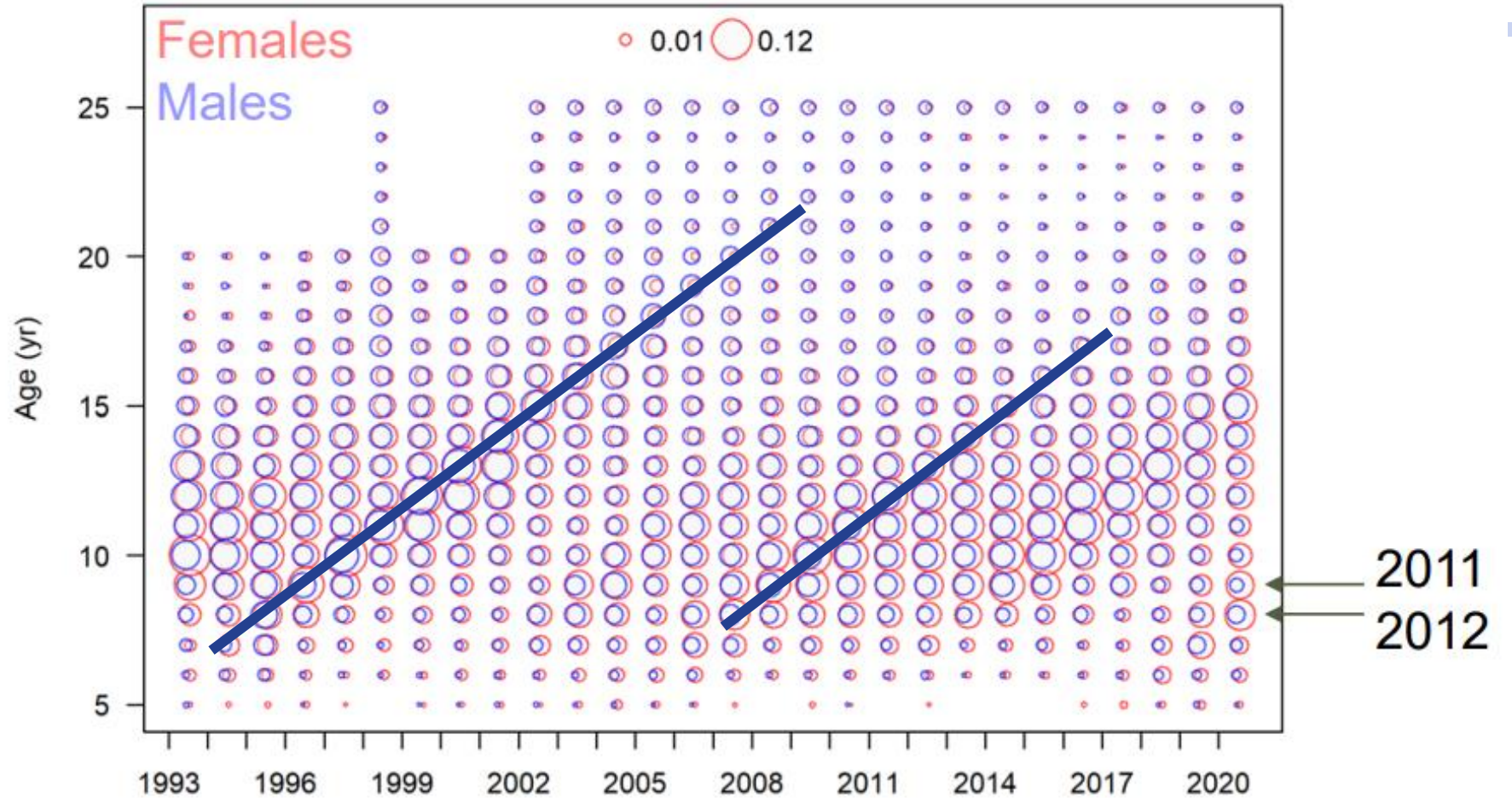


Source:
[IPHC](#)
[Annual](#)
[meeting](#)



Recent FISS ages

a.k.a. IPHC survey

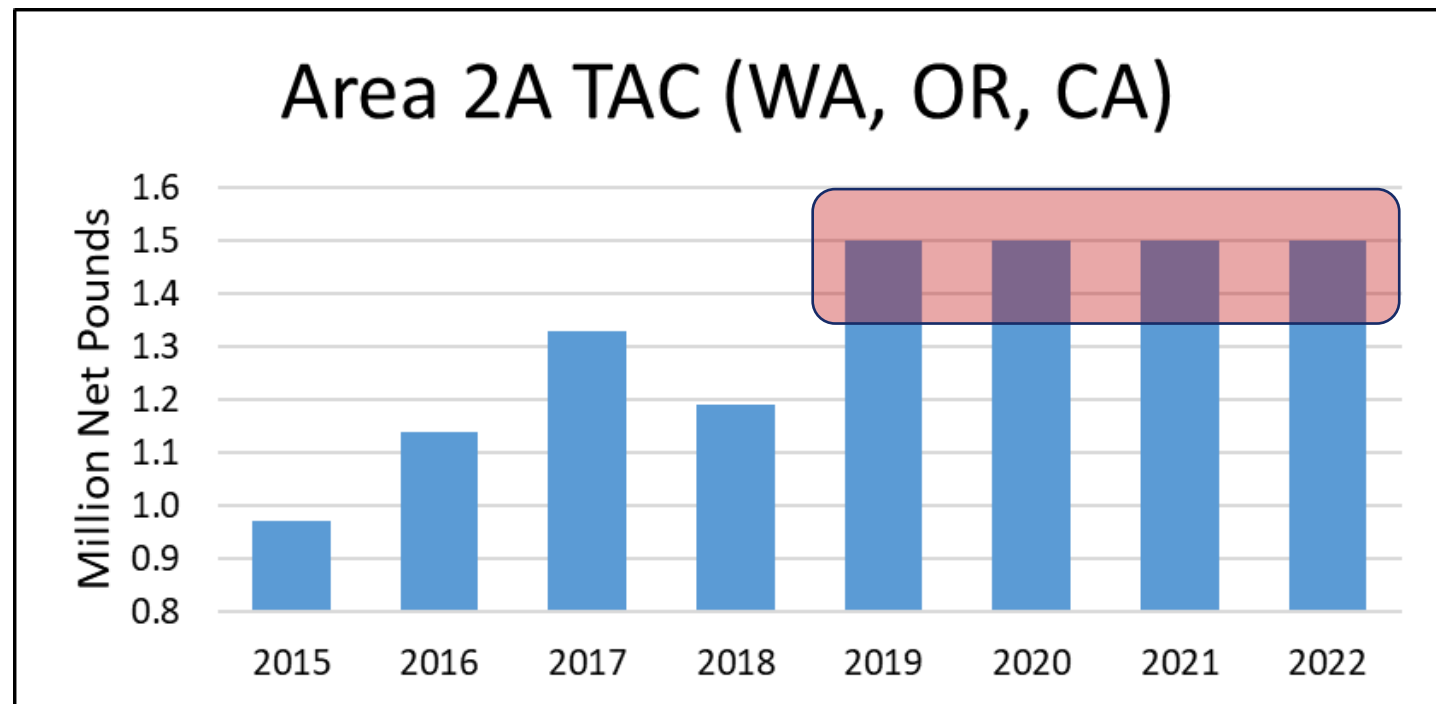


Source:
[IPHC](#)
[Annual](#)
[meeting](#)



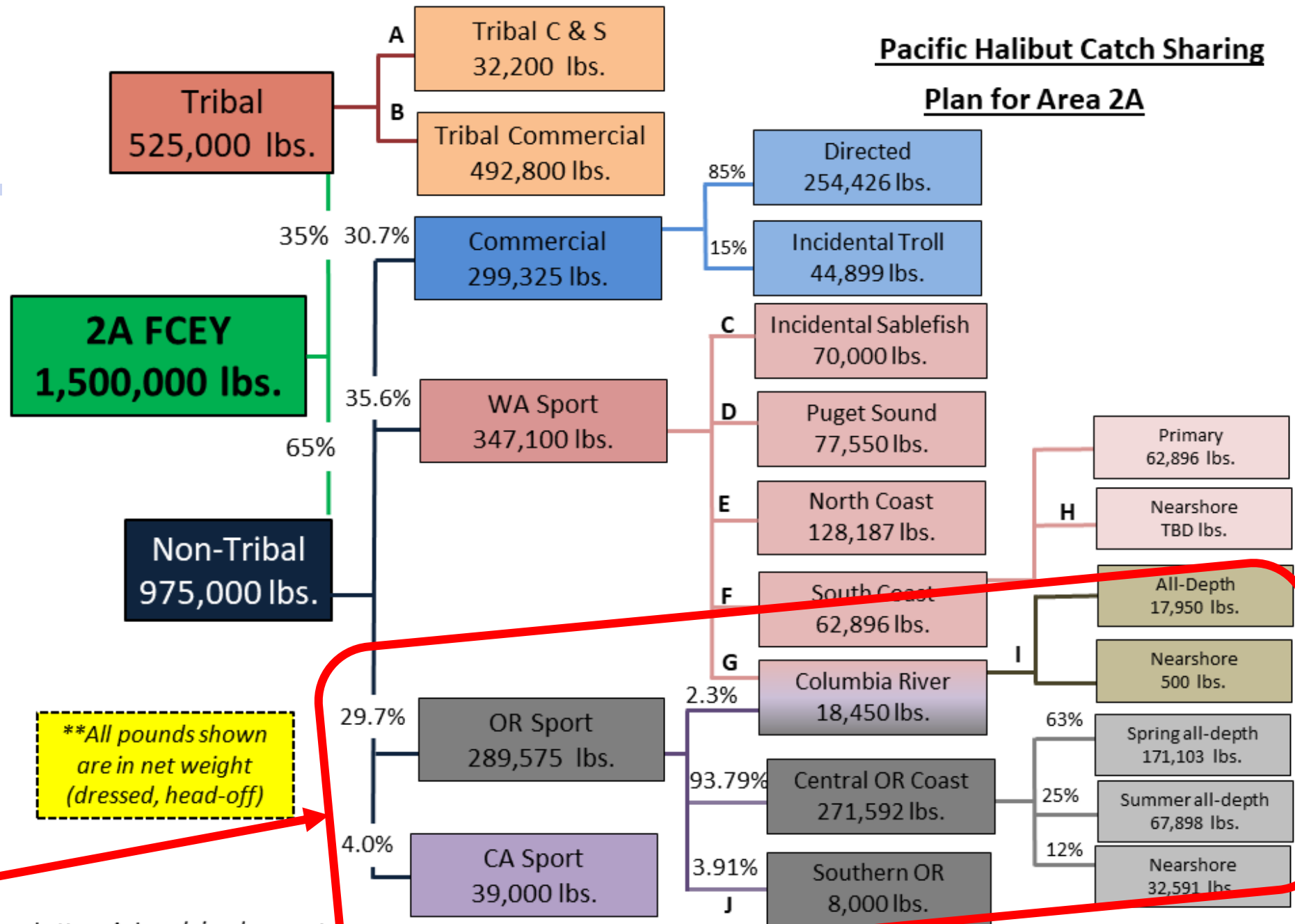
Area 2A Allocation

- 2021 IPHC meeting results
- Continued 1.5 million lbs. total allowable catch (TAC) for Area 2A
 - Expected through 2022
 - *Unless conservation concern*
 - **2022 last year of agreement**
 - Stabilizes fisheries
 - No biological concern
 - Low compared to AK & BC



Pacific Halibut Catch Sharing Plan for Area 2A

Area 2A Allocations



****All pounds shown are in net weight (dressed, head-off)**

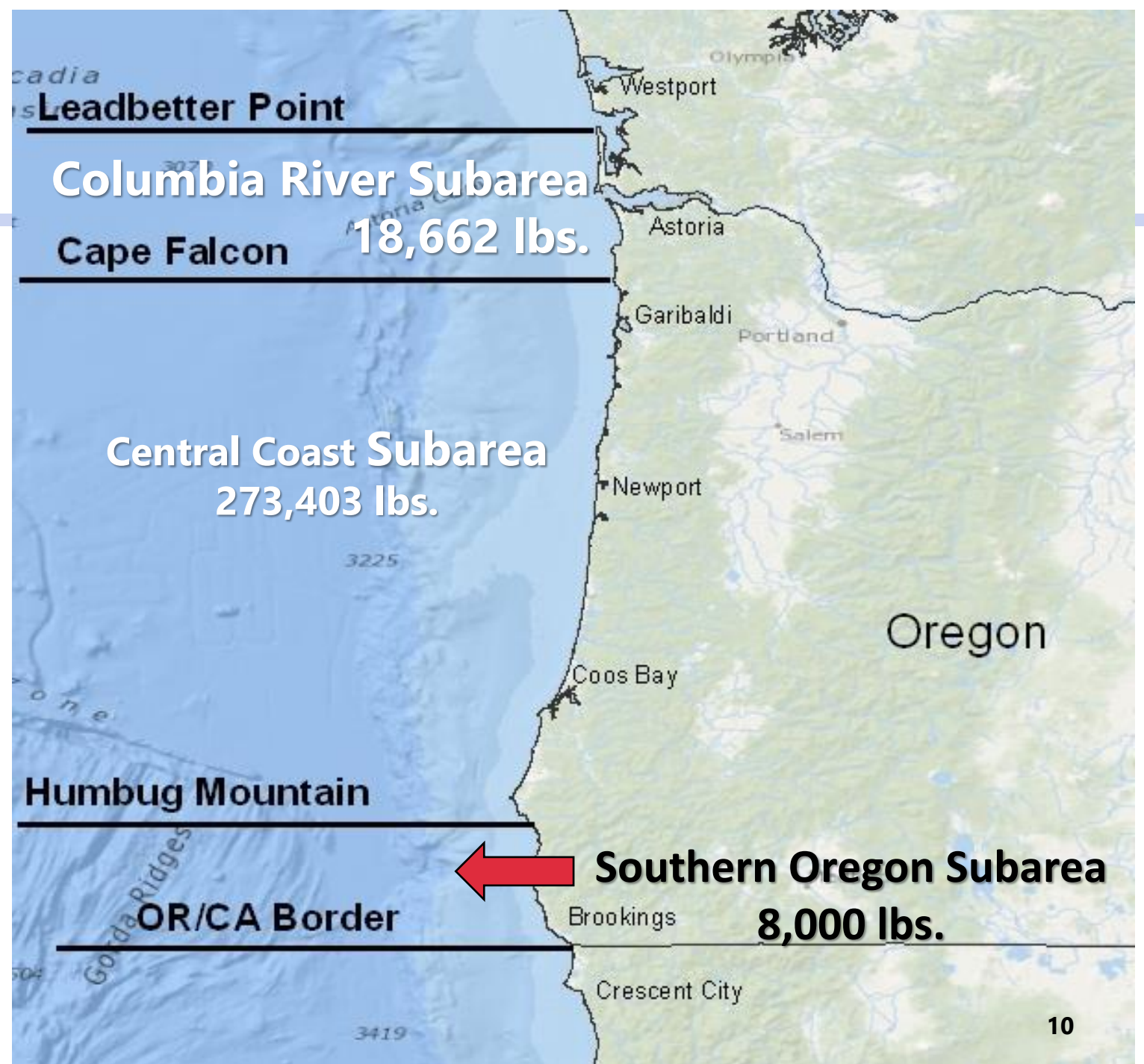
Oregon allocations

Letters A-J explained on next page



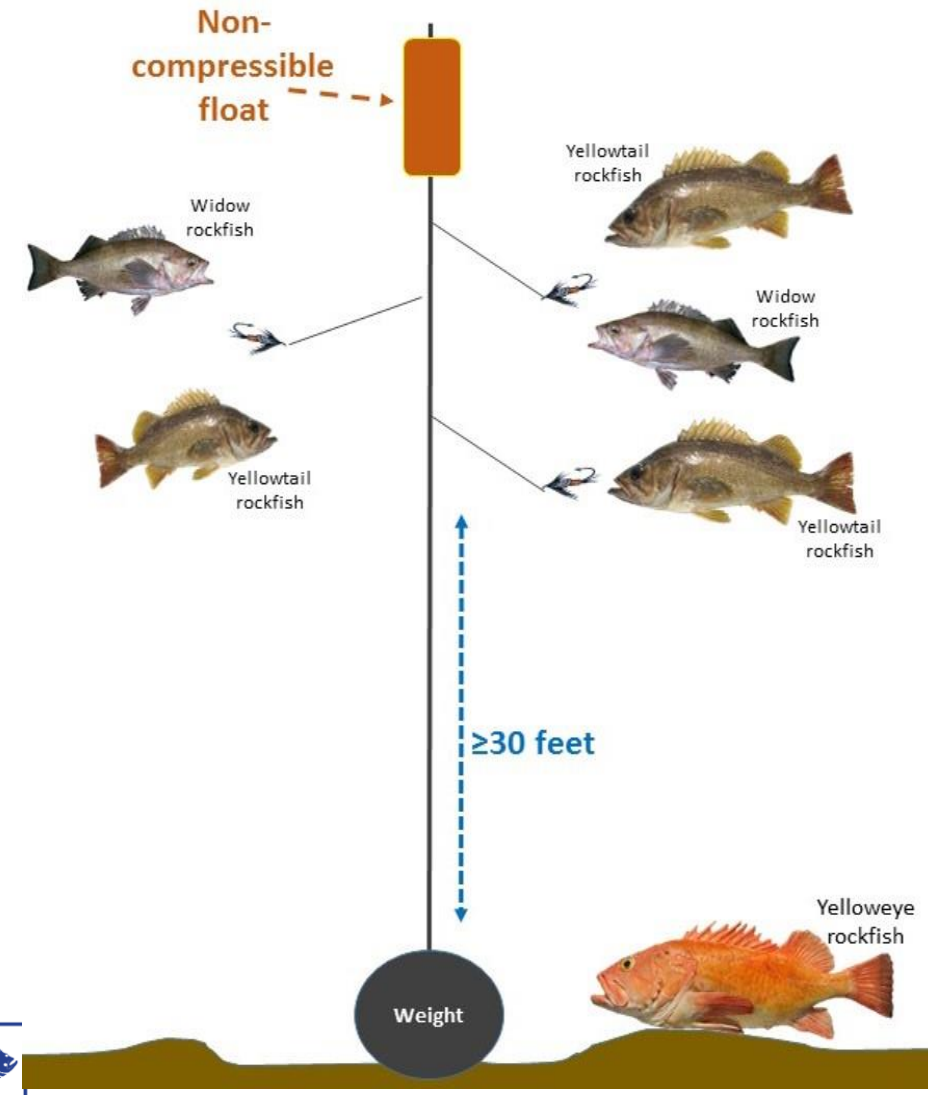
Marine Resources

Oregon has 3 subareas for the recreational Pacific halibut fishery



Changes Implemented for 2021

- Allow longleader gear fishing with all-depth halibut
 - Only outside of 40 fathom
 - Once rockfish onboard, no further halibut fishing can occur
 - Cannot be combined with sablefish, Pacific cod, or other flatfish on all-depth trips
 - Reasoning: Other bottomfish not allowed with longleader gear fishing
 - Lingcod also not allowed, not allowed with all-depth halibut nor longleader gear fishing



Other Recent Suggestions Not Implemented

- Return to 32 inch minimum size limit
- Reduce the annual bag limit
- Go to something like a big game tag

- *Details on following slides*



Return to 32 inch minimum size limit

- 32 inch minimum size removed starting with 2005 season
- Intended to reduce time on the water
 - Vessel/angler safety
 - Reduce impacts on yelloweye rockfish
- Neither WA nor CA have minimum size for recreational halibut
- IPHC looking at reducing or eliminating the minimum size limit for commercial fisheries
 - Modeling suggests will have minimal impact to stock overall
 - Possible small increased yield for fisheries



Return to 32 inch minimum size limit

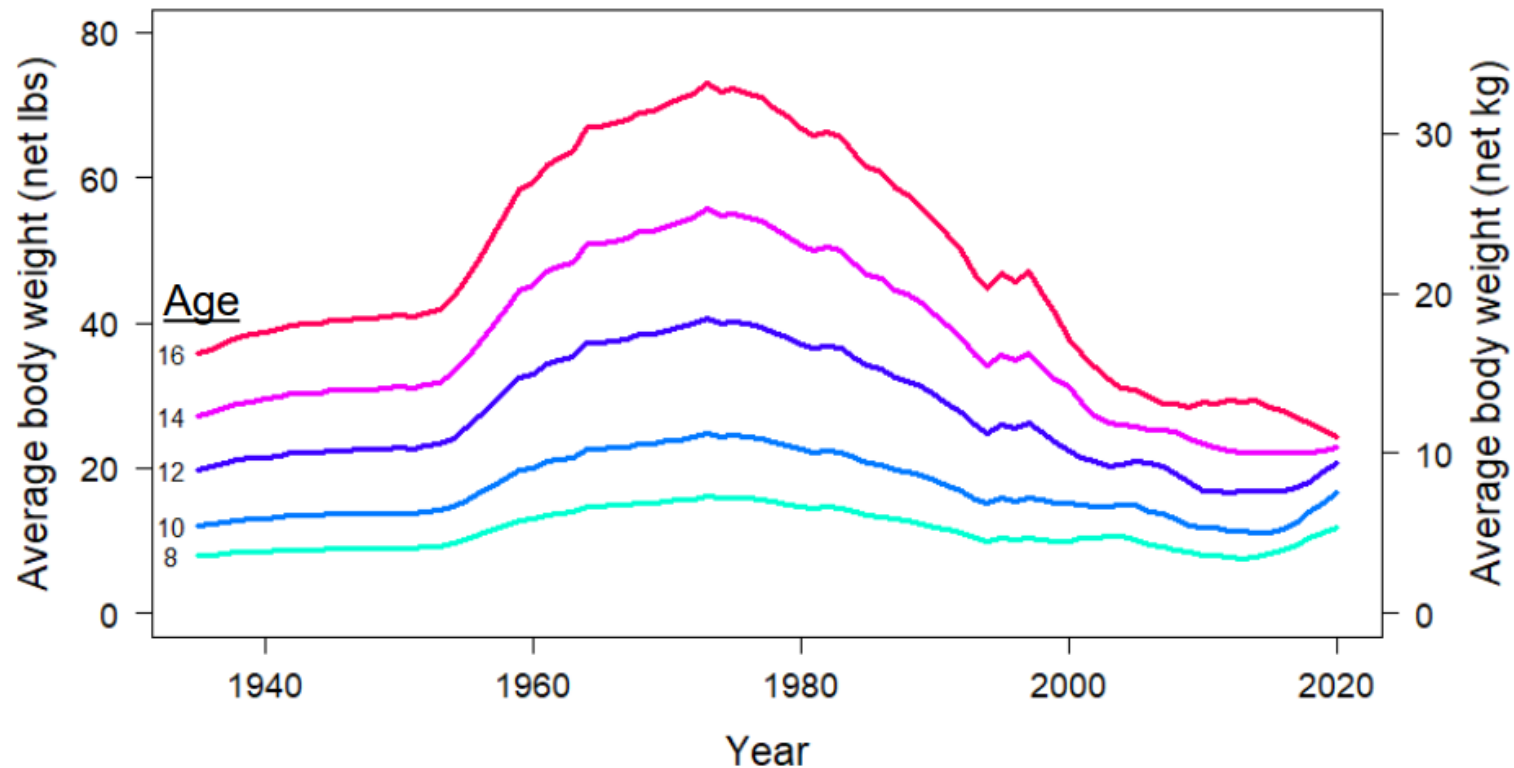
- Size at age of halibut is currently much smaller than it was 25 years ago
- What is driving the decline in size at age?
 - Density dependence (competition with other halibut and other fish, especially arrowtooth flounder)
 - Environmental changes
 - Other unidentified processes
 - Combination of factors



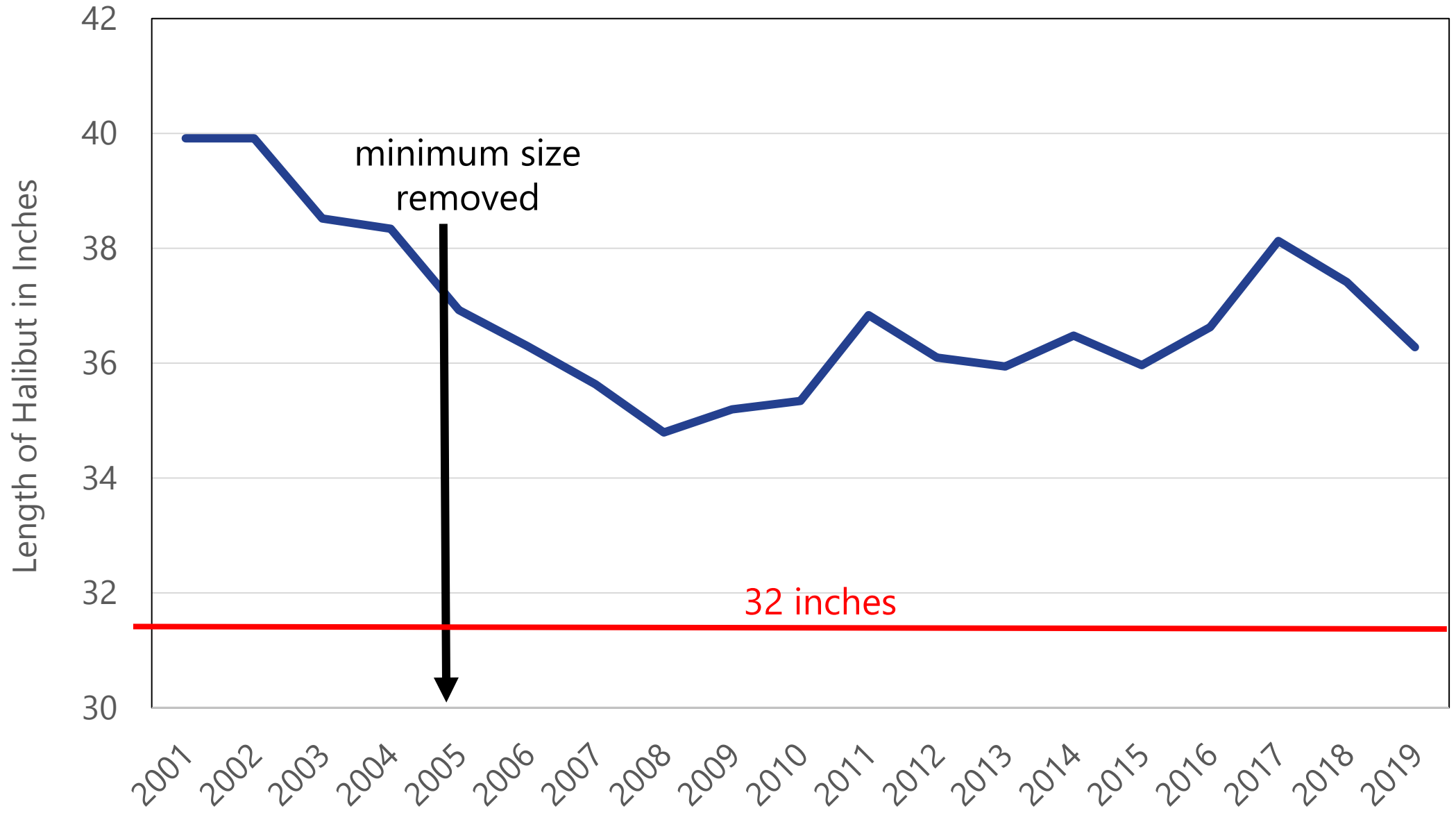
Return to 32 inch minimum size limit

- Females may be rebounding slightly (*info from IPHC annual meeting*)

Reconstructed coastwide female weight-at-age

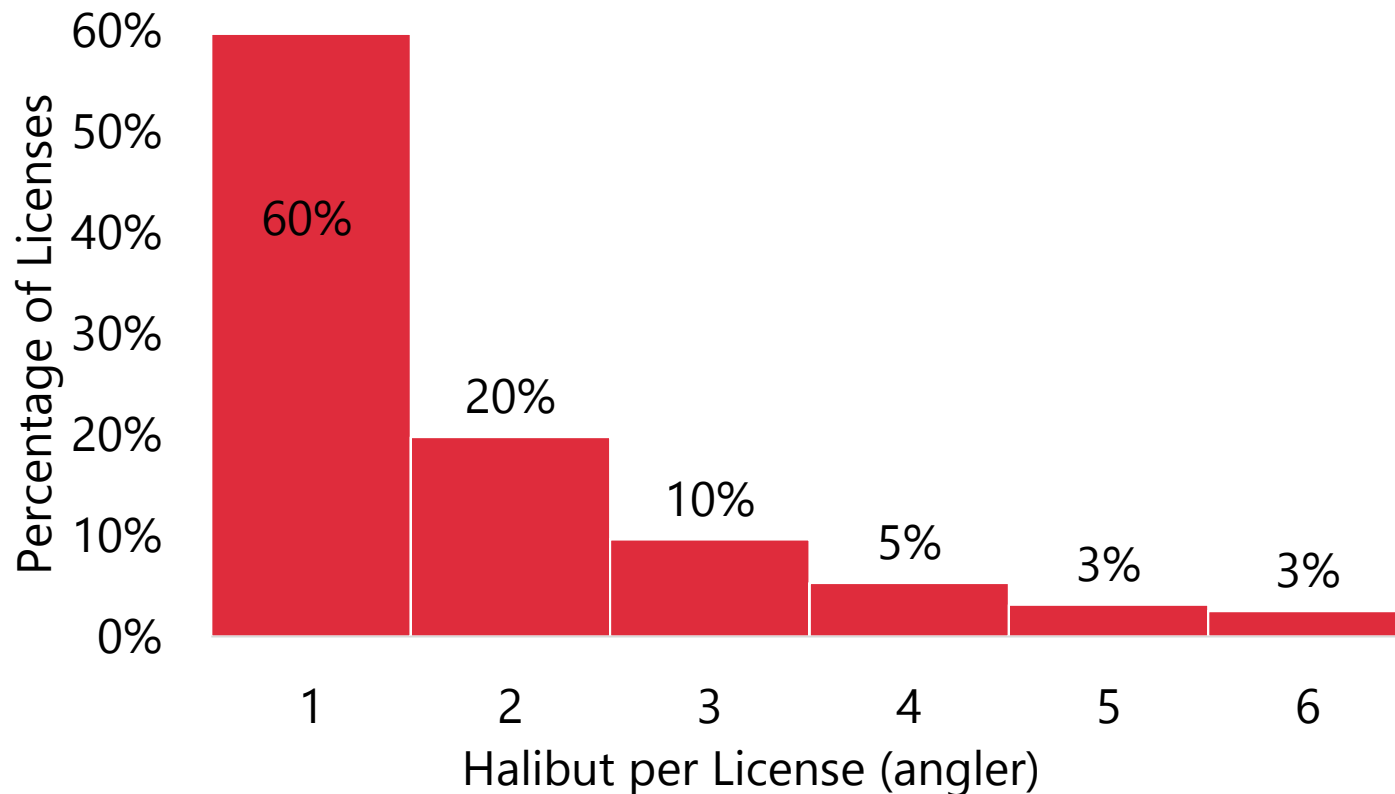


Annual Average Length of Sampled Pacific Halibut, 2001-2019



Reduce the Annual Bag Limit

- Majority of anglers (80%) who return their Combined Angling Tag with halibut recorded, only catch 1 or 2 halibut a year



Bag from 6 to:	% reduction in harvest
5	1.4%
4	4.6%
3	10.6%
2	22.1%
1	44.5%



Tag system: Similar to big game tags

- Goal: Allow anglers to choose when to fish, within halibut season start and end dates (May through Oct)
 - Tagged fish would count against the annual limit
- Not something that can be implemented by 2022, will take time to implement (1-3 years) through Federal & State processes
- Challenges:
 - Halibut is allocated, and managed, in pounds, but tags are in numbers
 - Will have to convert pounds of halibut to numbers of tags?
 - If average weight used is off by as little as 2 lbs/fish, could be quite a bit over/under allocation, or under/over issue tags
 - What about high-grading?
 - Could drive up the average weight of landed fish
 - Additional discard mortality?



Tag system: Similar to big game tags

- Average Weight and Number of Possible Tags
 - based on 2021 OR Allocation, if use entire allocation for tags

Year	Average Weight (round pounds)	Average Length (in inches)	Possible Number of Tags, Using this Average Size
2020	19	35	21,000
2019	25	38	15,600
2015-2020 Avg.	23	37.5	15,800




Tag system: Similar to big game tags

- The average angler would likely only get 1-2 tags annually
 - Have 15,000-20,000 “halibut” targeted angler trips annually
 - ~Equal to about the number of tags available if use 38-inch avg. size
 - Does not factor in angler trips trying for halibut on bottomfish, salmon, or tuna targeted trips (combo trips)
- Additional Questions:
 - All of the halibut allocation? Or just part of it?
 - Area/fishery specific or general?
 - Columbia River, Central Coast, or Southern Oregon
 - All-depth vs. nearshore
 - Party/group tags
 - How/when would tags be issued?
 - Pre-season or throughout the season?
 - First-come, first served, or drawing?
 - Auction?
 - Cost?



Halibut Catch Sharing Plan (CSP)

- Process to implement changes for 2022 fishery:
 - **Late July/early Aug: ODFW solicits public input** 
 - September 2021: PFMC preliminarily adopts changes for 2022 for further public comment (Webinar) www.pcouncil.org
 - Late Sept / early Oct: ODFW solicits public input on specific proposals forwarded by PFMC
 - November 2021: PFMC adopts final changes for 2022 fishery (Costa Mesa, CA or Webinar, TBD) www.pcouncil.org
 - January 2022: IPHC Annual Meeting, quotas set (Seattle, WA) www.iphc.int





Marine
Resources

Thank you

Marine Resources Program
Oregon Department of Fish and Wildlife

2040 SE Marine Science Drive
Newport, OR 97365
(541) 867-4741

Contact us!

- lynn.mattes@state.or.us
- christian.t.heath@state.or.us
- maggie.sommer@state.or.us