



Marine
Resources

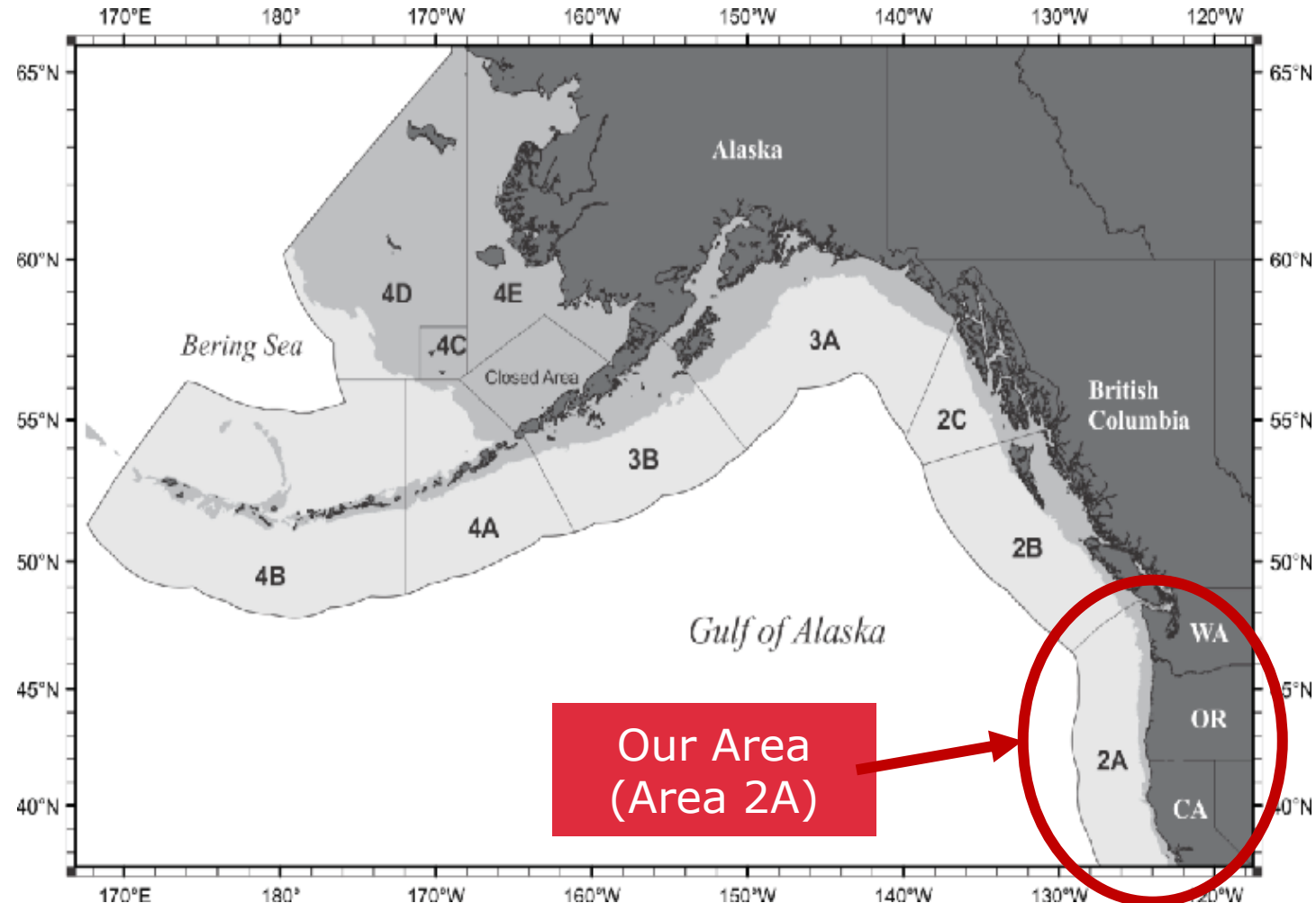
Public Meeting on the 2023 Recreational Halibut Seasons



© Lynn Mattes

Meeting Outline

- IPHC meeting results
 - Status of the Pacific halibut stock
- Area 2A allocations
- Proposed changes for 2023



2022 IPHC Annual Meeting Results

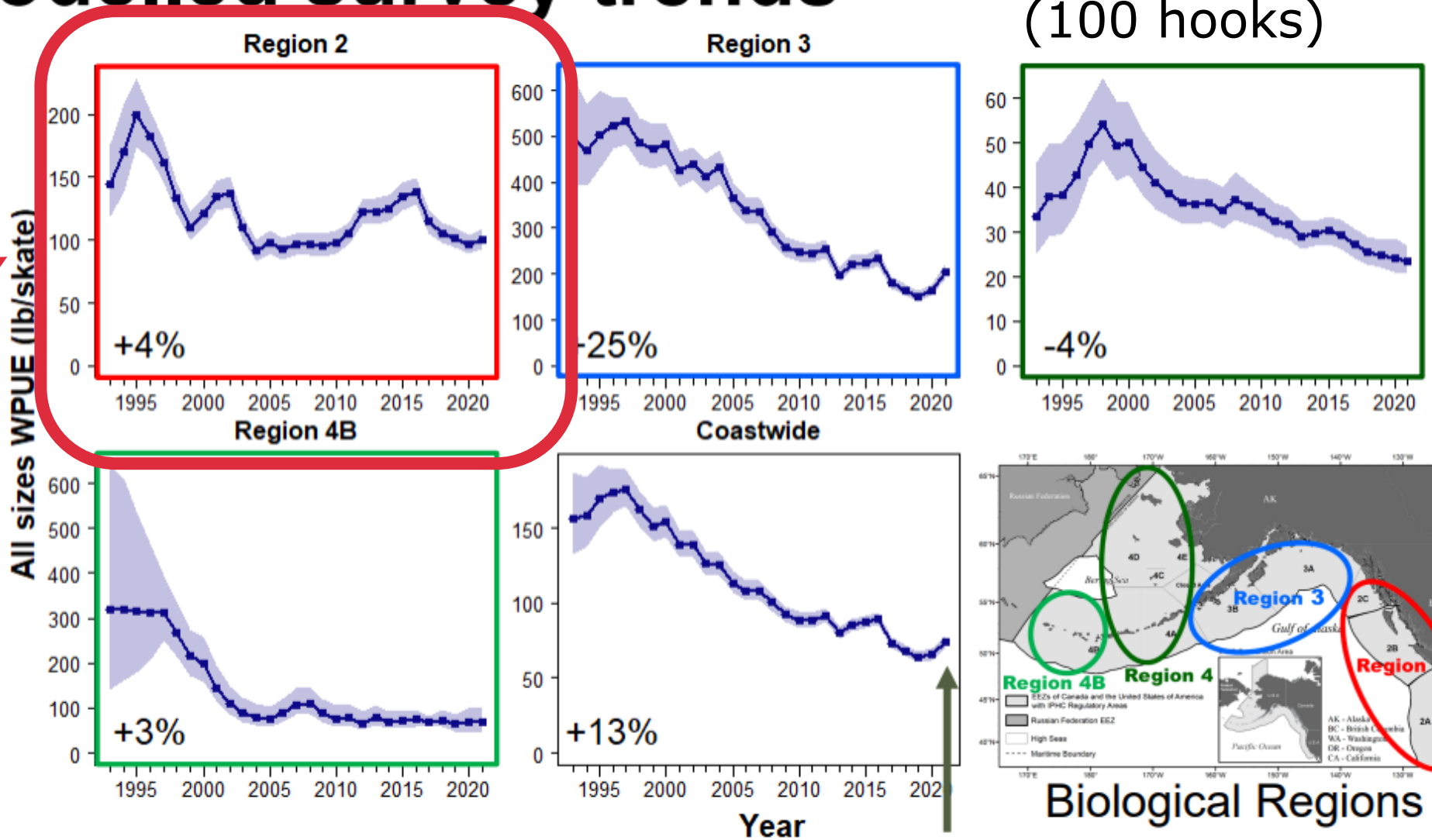
- Trends are up slightly, shifting to younger fish
- 2012-year class now appears stronger than any 2006–2011-year class
 - Reports of a lot of 26–30-inch fish last year
 - Would be the size of fish from the 2012-year class
 - Magnitude of biomass of those fish still somewhat uncertain
- Center of the stock distribution shifting back towards central Gulf of Alaska
- Size at age is improving in females



Modelled survey trends

Pounds per skate
(100 hooks)

Our area



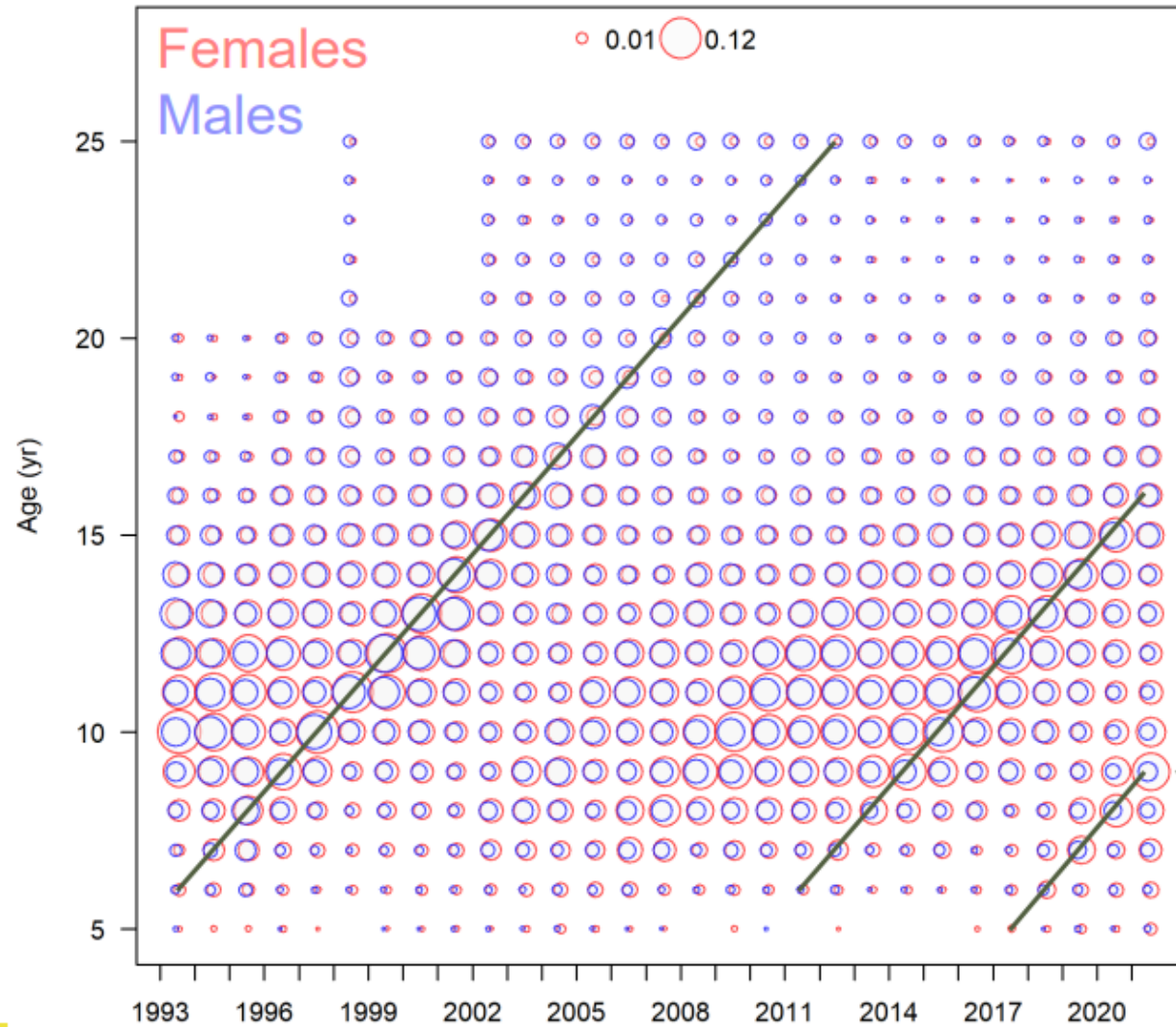
Source:
[IPHC](#)
[Annual meeting](#)

Indicates less productivity from growth than recruitment



Recent FISS ages

a.k.a. IPHC survey



the 2005-year class

the 2012-year class showing up in the data

Source:
[IPHC Annual meeting](#)



INTERNATIONAL PACIFIC HALIBUT COMMISSION

IPHC

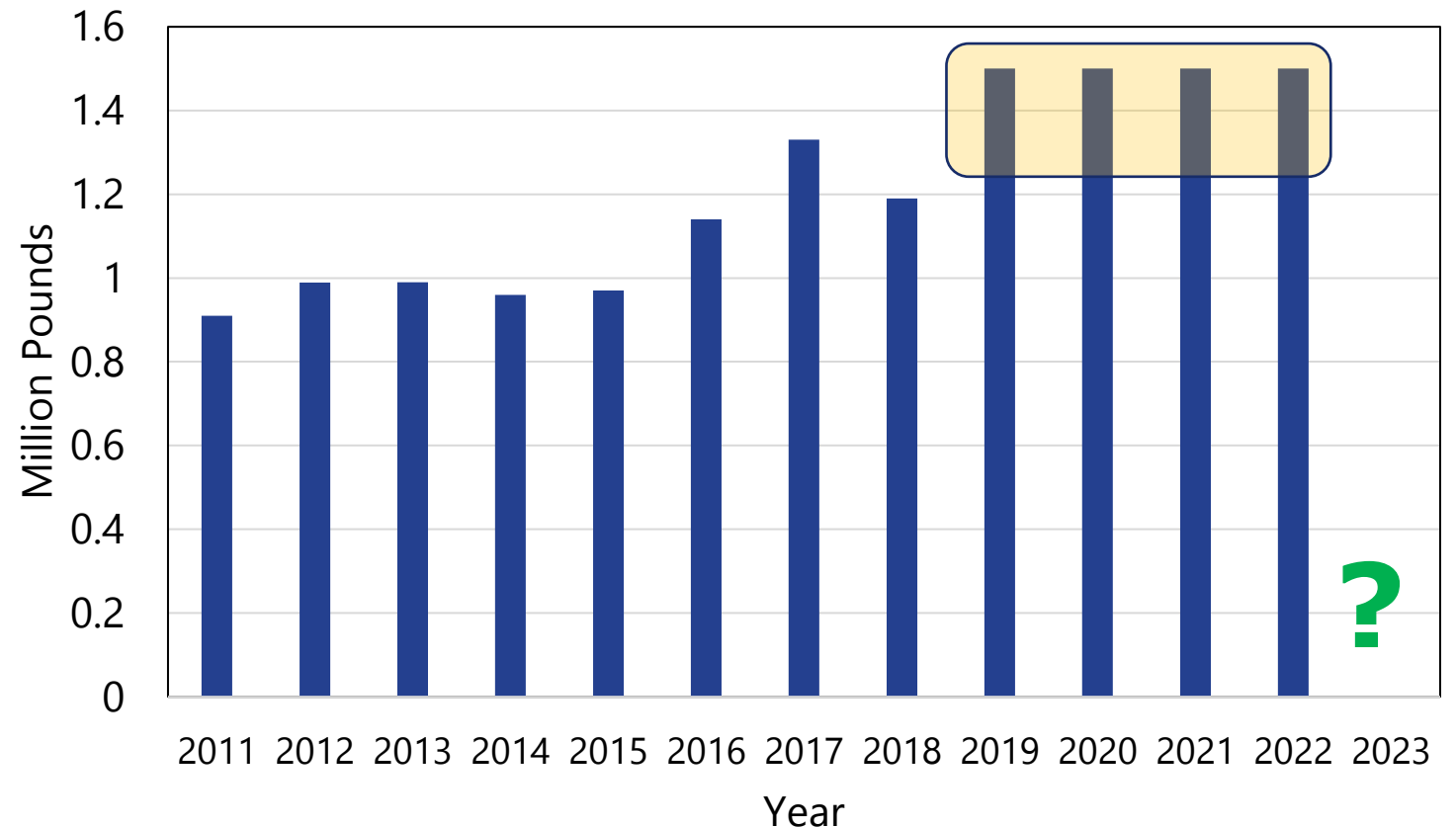
Slide 11



Area 2A Allocation

- **2022 is the last year of a 4-year agreement**
- 1.5 million lbs. allocation
 - Stabilized fisheries
 - No biological concern
 - Low compared to AK & BC
- **2023 quota is unknown**
 - Interim meeting is Nov 30-Dec 1—may get some idea of where commissioners are leaning
 - Finalized by IPHC in January 2023

Area 2A Annual TAC

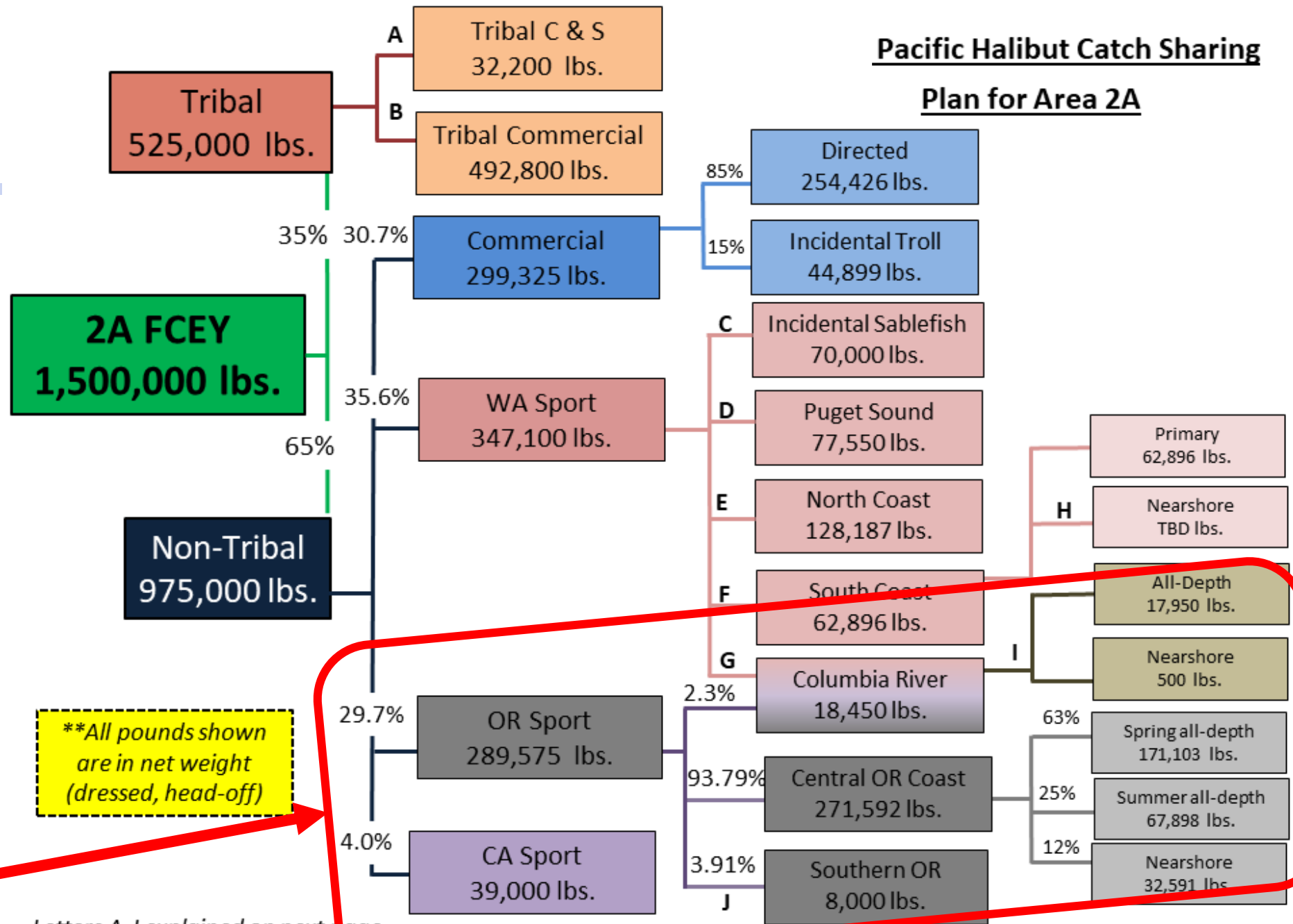


Oregon has 3 subareas for the recreational Pacific halibut fishery



2022 Area 2A Allocations

Pacific Halibut Catch Sharing Plan for Area 2A




****All pounds shown are in net weight (dressed, head-off)**

Oregon allocations

Letters A-J explained on next page

Halibut Catch Sharing Plan (CSP) Process

- Process to implement changes for 2023 fishery:
 - Late July/early Aug: ODFW solicits public input
 - September 2022: PFMC preliminarily adopts changes for 2023 for further public comment (Boise, ID) www.pcouncil.org
 - **Early Oct: ODFW solicits public input on specific proposals forwarded by PFMC** 
 - November 2022: PFMC adopts final changes for 2023 fishery (Garden Grove, CA) www.pcouncil.org
 - January 2023: IPHC Annual Meeting, quotas set (Victoria, BC) www.iphc.int

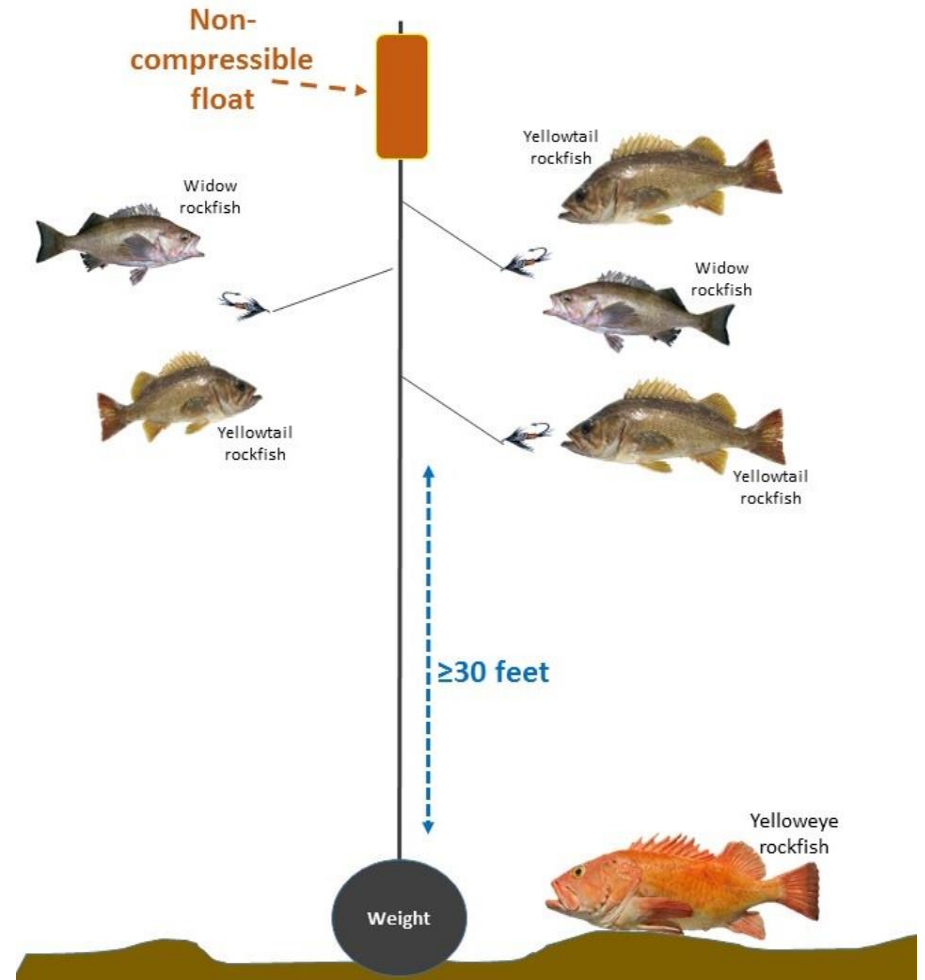


Proposed Changes for 2023 Forwarded by the Pacific Fishery Management Council



Proposal A. All-Depth Halibut Fishing and Longleader Gear Fishing on the Same Trip

- Allow longleader gear fishing *and* retention of sablefish, Pacific cod, and other flatfish with all-depth halibut on the same trip
 - E.g., Would be able to keep petrale sole along with longleader gear species and halibut
- Lingcod remain prohibited
- Still support?



Proposal B. Central Oregon Coast All-Depth Opening Date

- If the Central Oregon Coast Subarea Spring All-Depth allocation is greater than 100,000 pounds, the season **opens May 1st**
- Would allow the season to open 10-12 days earlier at high quota levels
- ODFW would still meet with anglers to determine how many days per week, and which weeks would be open
 - After receiving the quota from IPHC
 - Early February
- More opportunity early in the season to harvest quota at high levels





Proposal C. Central Oregon Coast Subareas Daily Bag Limit

- If the Central Oregon Coast Subarea allocation (all-depth and nearshore combined) is 200,000 pounds or greater, the **daily bag limit may be increased to two fish per day at any time during the season**
- During July public meetings, anglers requested “front-loading” the season
 - Rather than relying on “mop-up” at the end of the season
 - Often by September many anglers have switched to hunting and kids are back in school, reducing the number of anglers who can take advantage of the increased bag limits
- Have not had 2 fish bag limit in May or June in over 20 years
 - High uncertainty on what that will do to effort and catch rates
 - Unknown what yelloweye rockfish bycatch and discard mortality will be
 - Both would be monitored closely
- 2 fish daily bag limit would also apply to the Southern Oregon Subarea
 - But not the Columbia River Subarea due to co-management with Washington



Proposal D: Central Oregon Coast All-Depth Open Days Per Week

- If the Central Oregon Coast Subarea Spring All-Depth allocation is greater than 100,000 pounds, the season **may open up to seven days per week during months when the bottomfish fishery is not depth restricted**
- Changes the option for 7 days per week from May - June and Sept-Oct to any time period where the bottomfish fishery is open to all-depths
 - Allows more flexibility in days open per week
- Having halibut and regular bottomfish both open at all-depths, means both may be retained on the same trip
 - General marine fish daily bag limit
 - Lingcod (2)
 - Other flatfish (25)



Next Steps

- Compile input received
- Develop ODFW recommendations
- Provide a report to the Pacific Fishery Management Council and its advisory bodies
 - Summary of public input
 - ODFW recommendations
- Council will take final action at their November meeting



Discussion

- *To be filled in during the meeting*





Marine
Resources

Thank you

Marine Resources Program Oregon Department of Fish and Wildlife

2040 SE Marine Science Drive
Newport, OR 97365
(541) 867-4741

Contact us!

- lynn.mattes@odfw.Oregon.gov
- christian.t.heath@odfw.Oregon.gov
- Jessica.l.watson@odfw.Oregon.gov

Reminder: upon landing a halibut, you need to **IMMEDIATELY record the fish on your Combined Angling Tag**



Immediately means:

- Prior to rebaiting & putting the rod back out to fish
- Before taking a snack or drink break
- Not 5, 10, or 15 minutes later
- **Do not wait** until you are on the way back to the dock



If using electronic tagging, make sure to download the app and log in before you leave the dock

- If having trouble getting the app to open while offshore, try putting the phone in "airplane" mode
- Once the app is open, you can record your fish
- When you get back into cell service take off "airplane" mode, and it will upload tagged fish to the system

For more info on tagging salmon and halibut, see:

<https://myodfw.com/articles/9-tips-tagging-fish-and-game-using-e-tagging-or-paper-tags>