



Marine
Resources

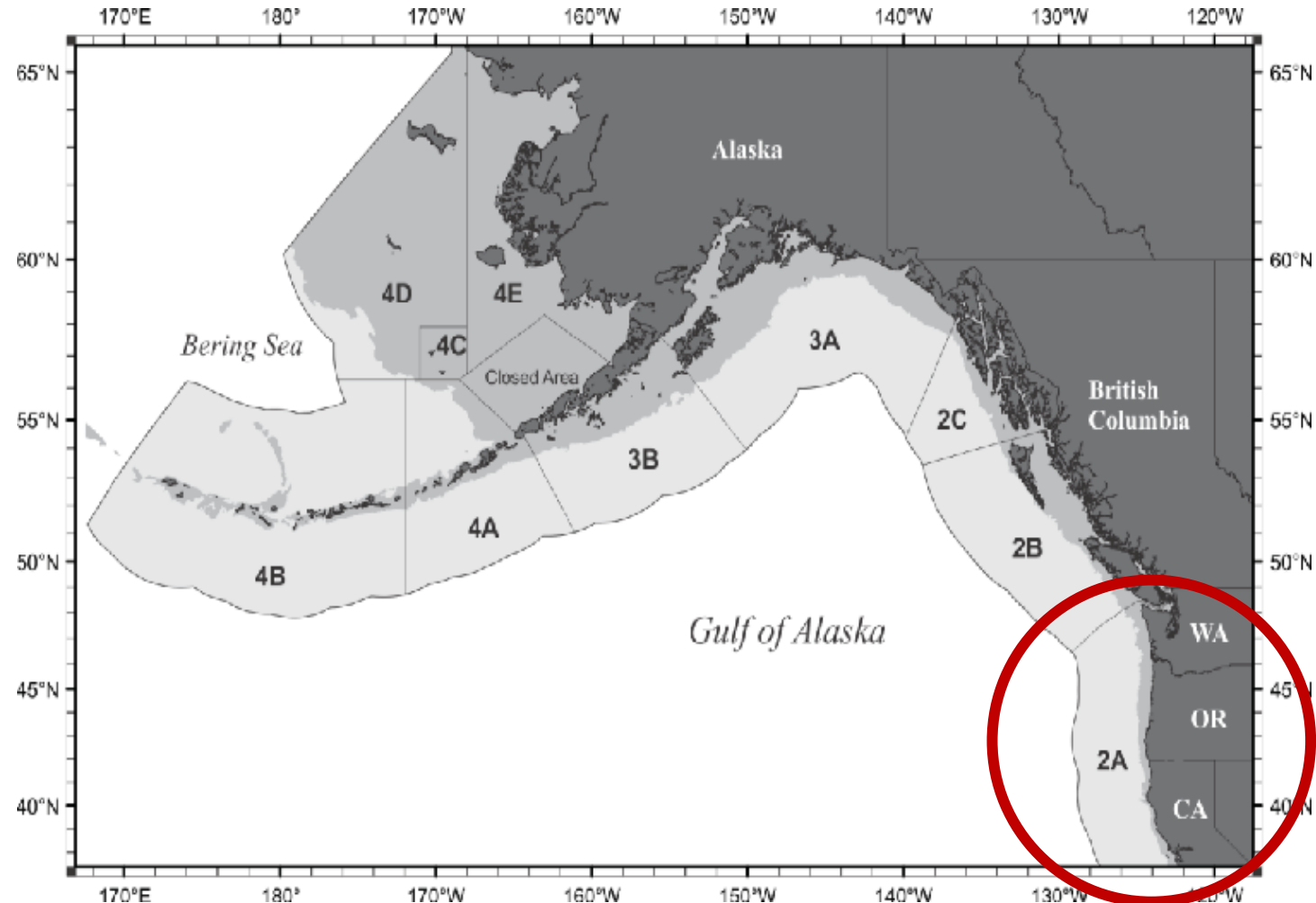
Public Meetings on 2023 Recreational Halibut Seasons



© Lynn Mattes

Meeting Outline

- Status of the Pacific halibut stock
- Area 2A allocations
- Recent suggested changes
- Discussion for 2023



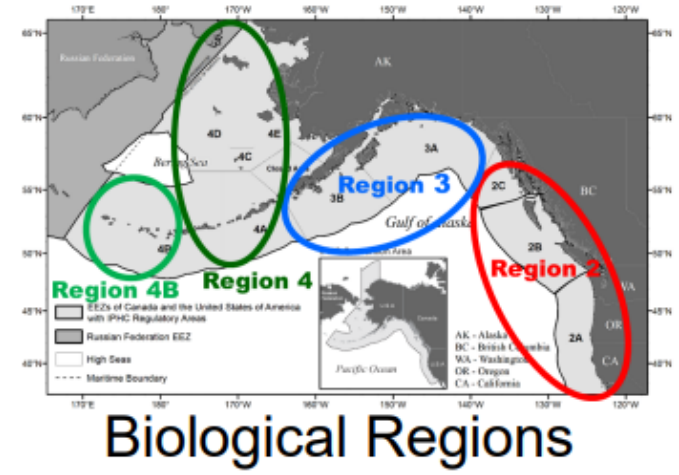
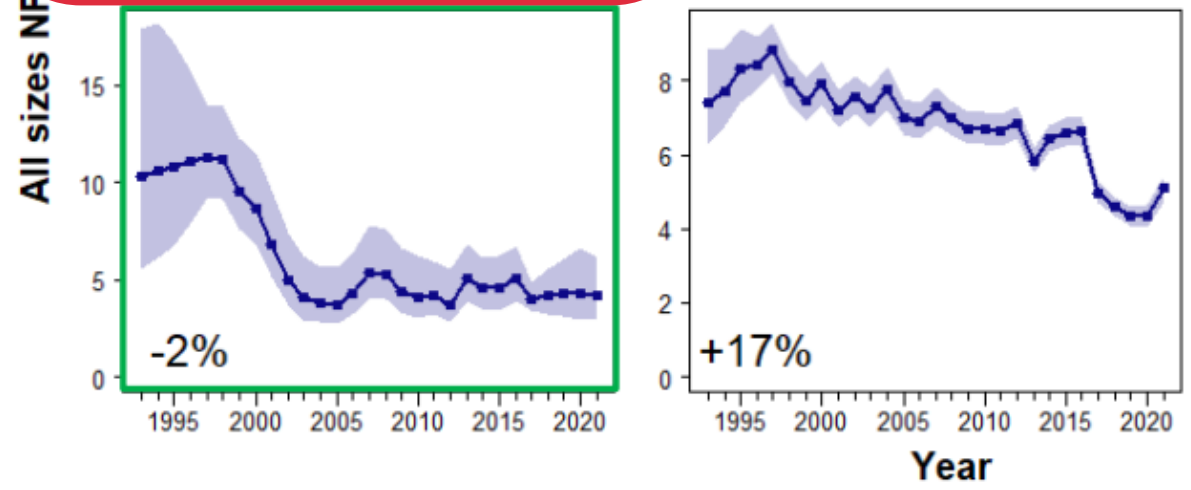
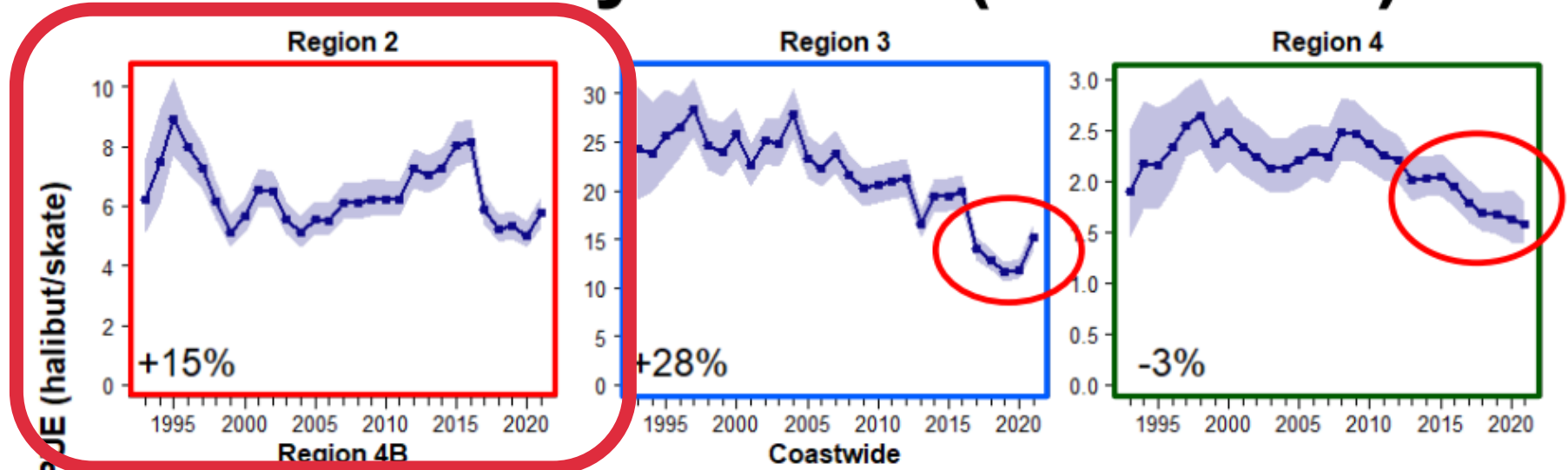
IPHC Annual Meeting Results

- Trends are up slightly, shifting to younger fish
- 2012-year class now appears stronger than any 2006–2011-year class
 - Reports of a lot of 26–30-inch fish last year
 - Would be the size of fish from the 2012-year class
 - Magnitude of biomass of those fish still somewhat uncertain
- Center of the stock distribution shifting back towards central Gulf of Alaska
- Size at age is improving in females



Modelled survey trends (Numbers)

Our area



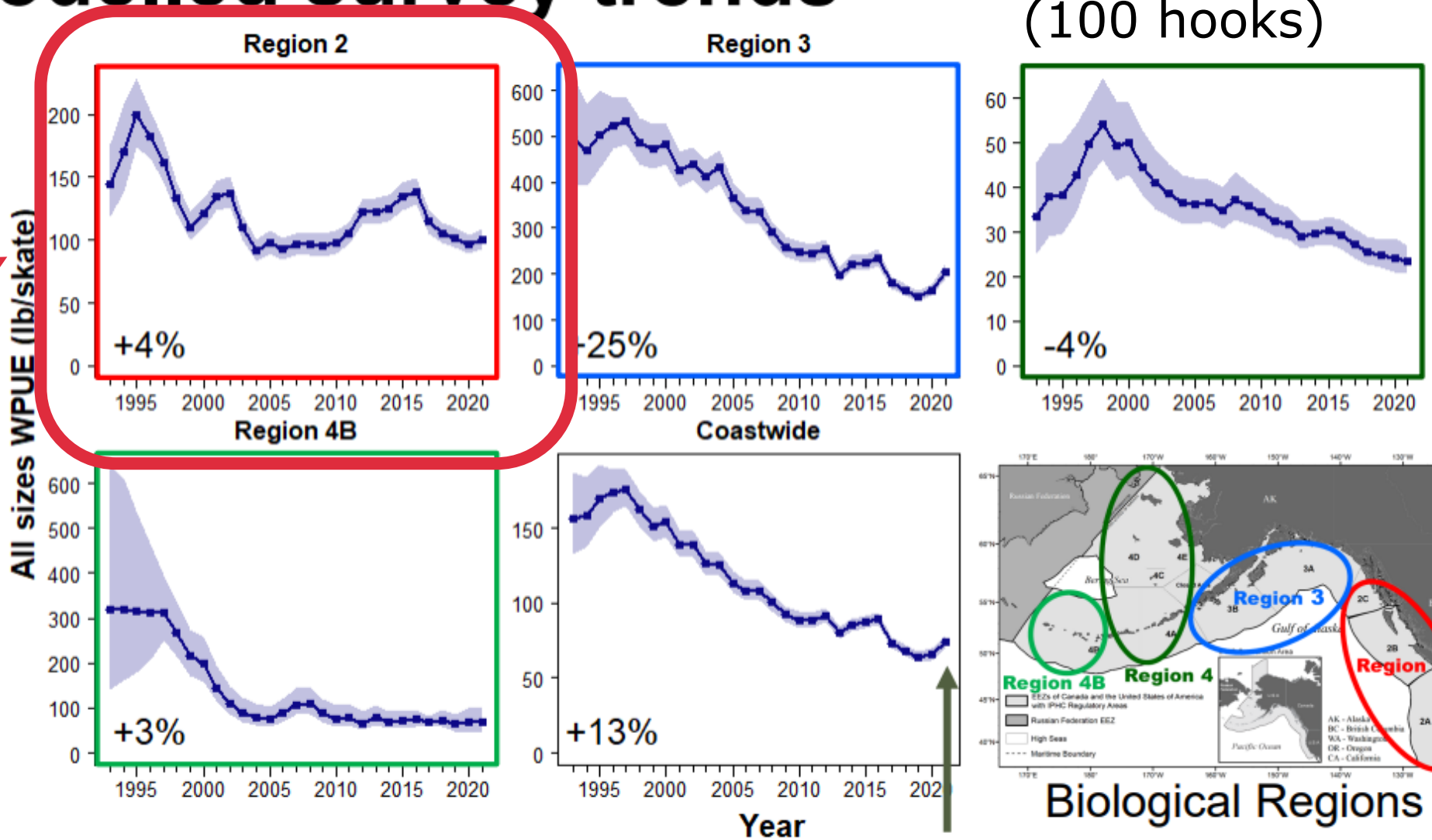
Source:
[IPHC](#)
[Annual meeting](#)



Modelled survey trends

Pounds per skate
(100 hooks)

Our area



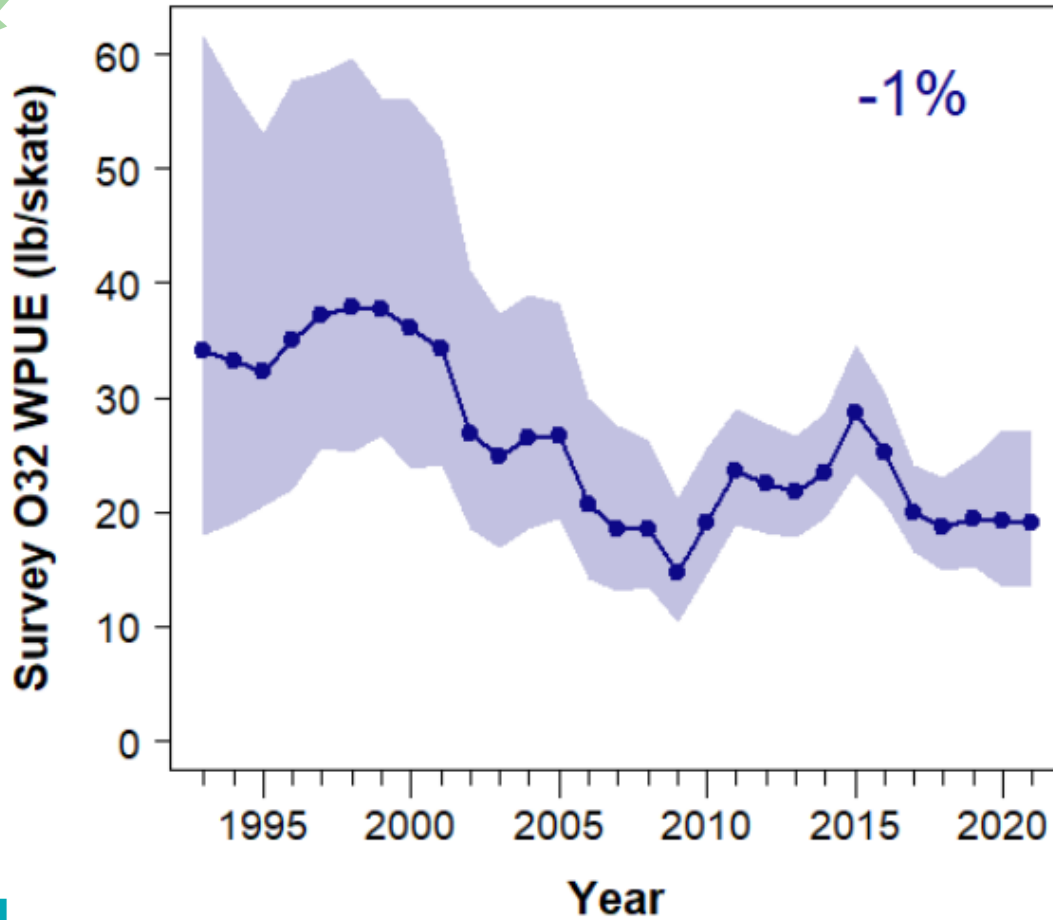
Source:
[IPHC](#)
[Annual meeting](#)

Indicates less productivity from growth than recruitment

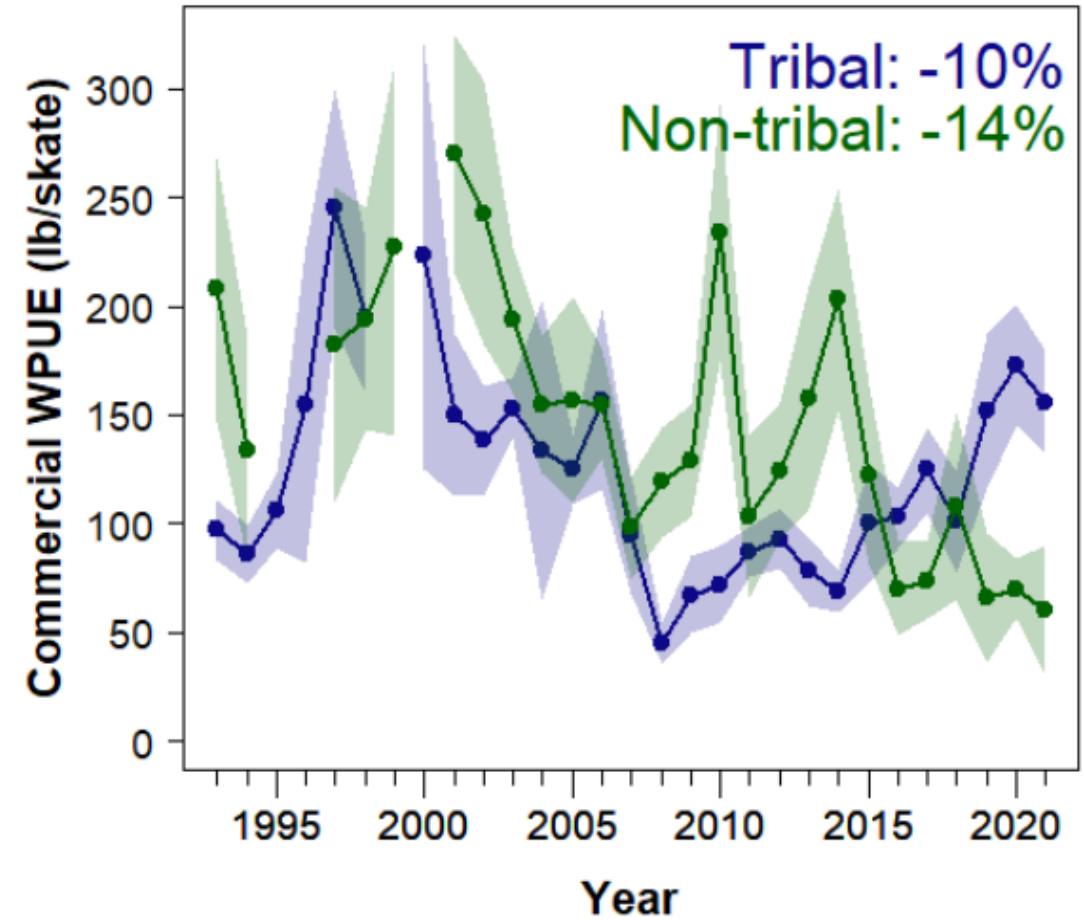


O32 WPUE trends by IPHC Regulatory Area

2A survey



2A commercial



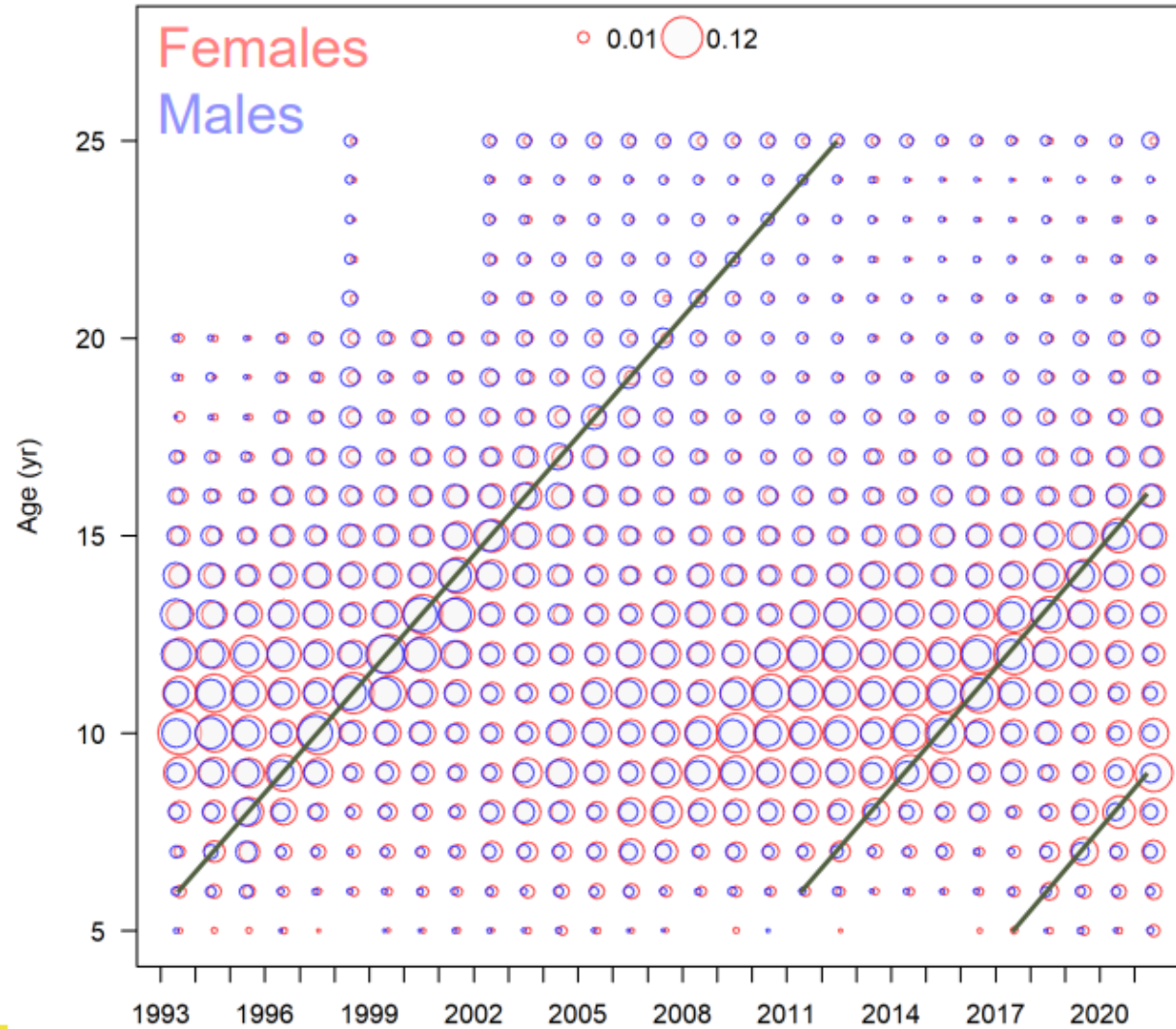
Fish over 32 inches

Source:
[IPHC Annual meeting](#)



Recent FISS ages

a.k.a. IPHC survey



the 2005-year class

the 2012-year class showing up in the data

Source:
[IPHC Annual meeting](#)



INTERNATIONAL PACIFIC
HALIBUT COMMISSION

IPHC

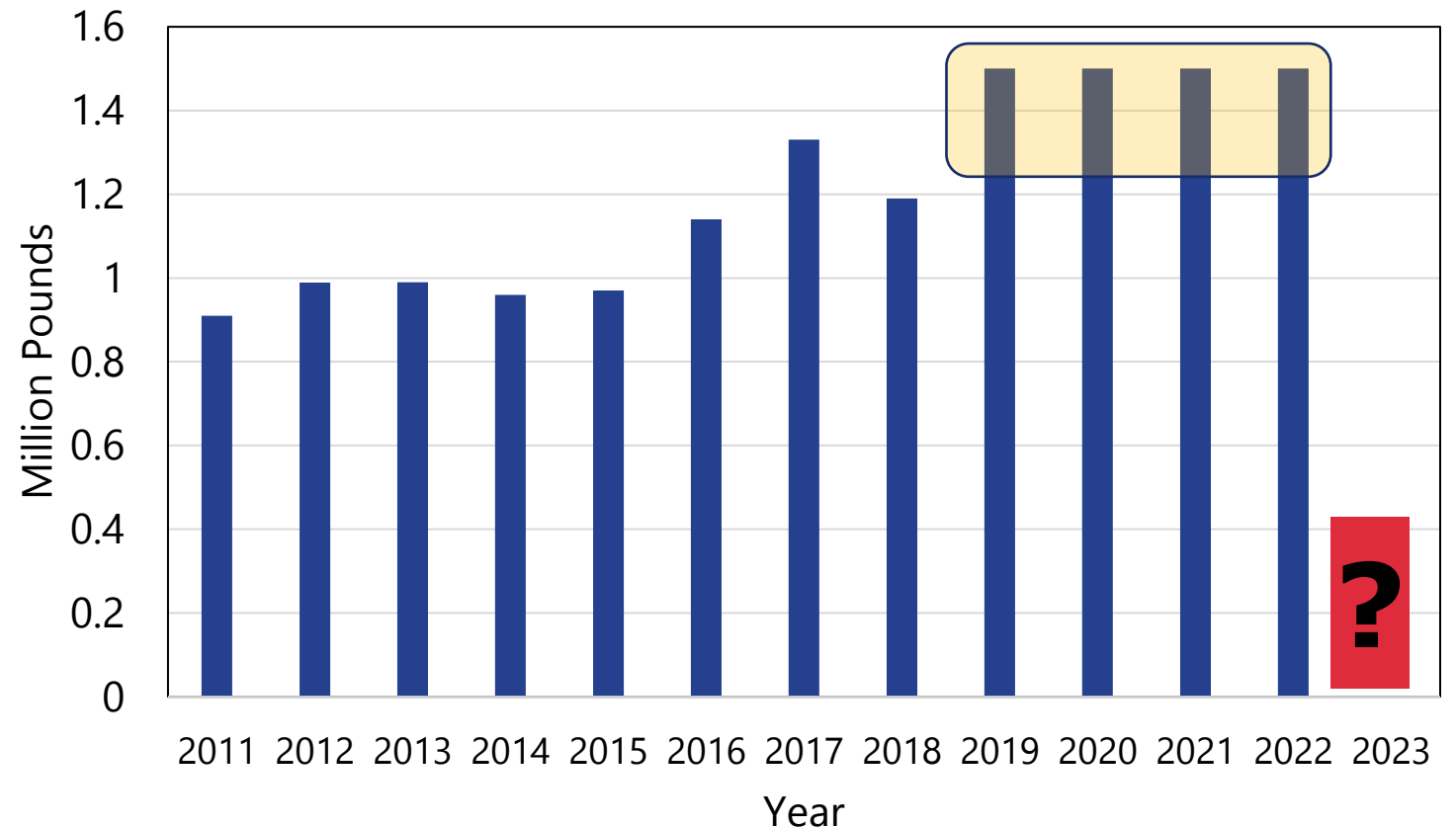
Slide 11



Area 2A Allocation

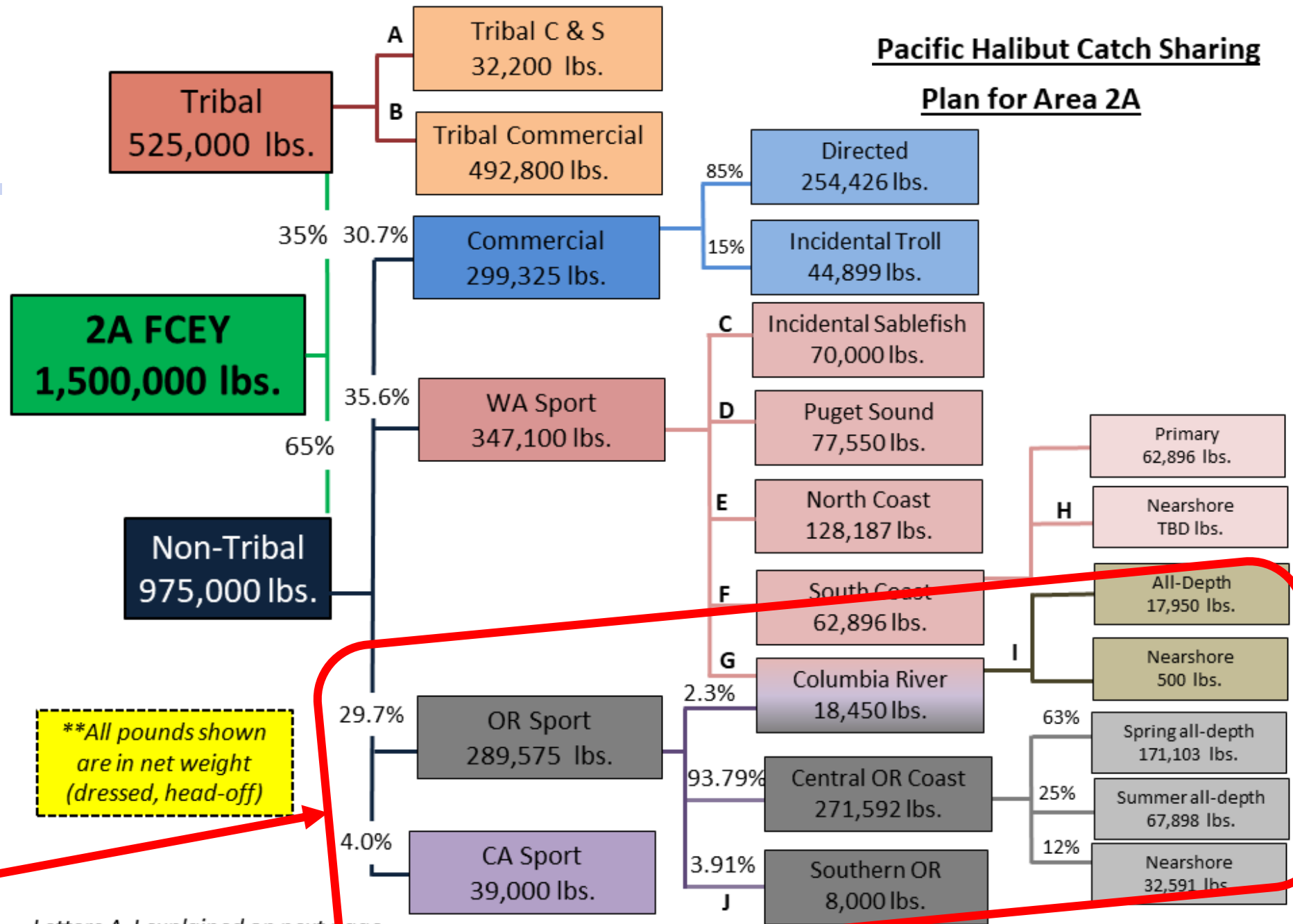
- **2022 is the last year of agreement**
- 1.5 million lbs. allocation
 - Stabilized fisheries
 - No biological concern
 - Low compared to AK & BC
- **2023 quota is unknown**
 - Determined by IPHC in January 2023

Area 2A Annual TAC



2022 Area 2A Allocations

Pacific Halibut Catch Sharing Plan for Area 2A

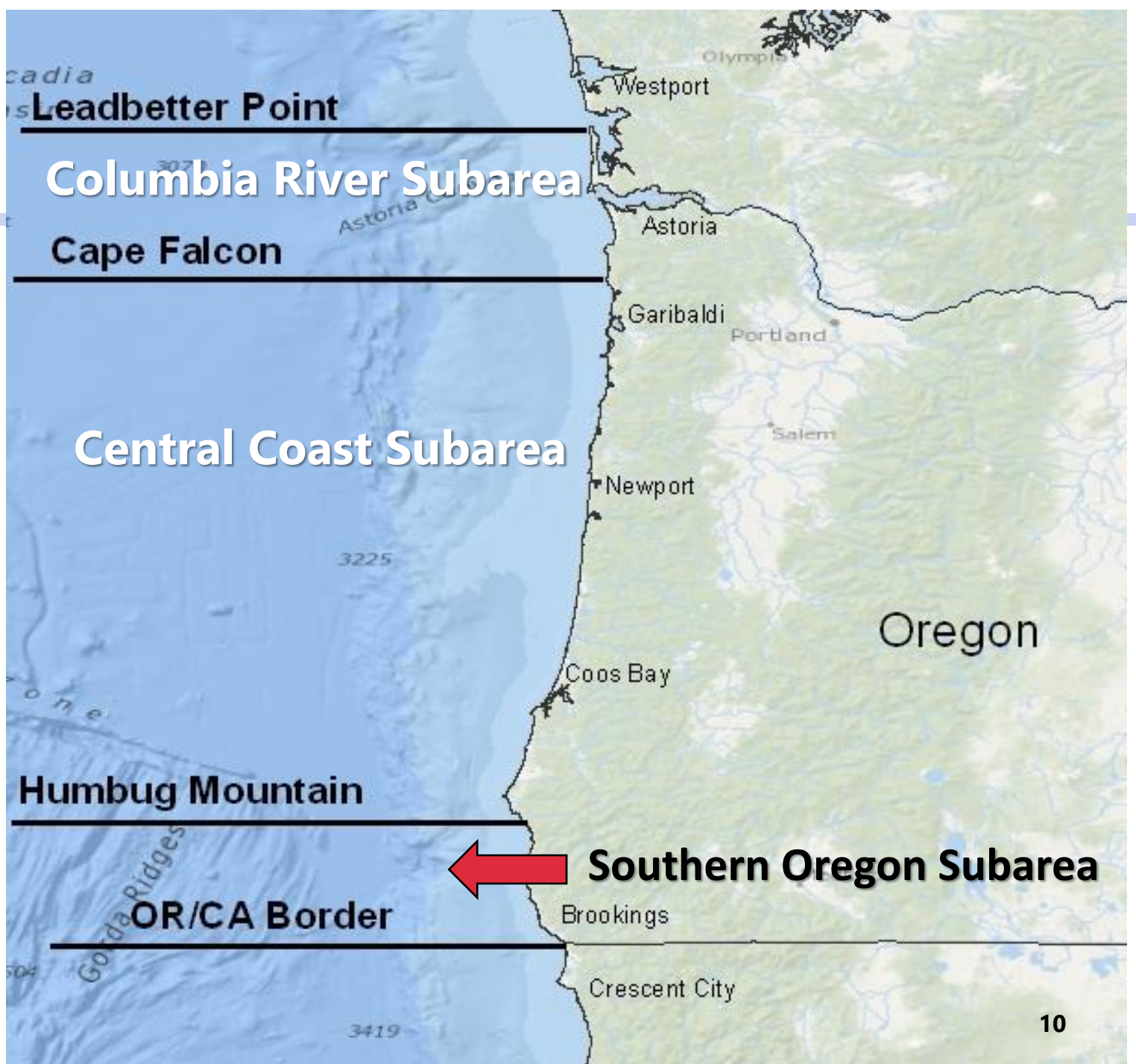


****All pounds shown are in net weight (dressed, head-off)**

Oregon allocations

Letters A-J explained on next page

Oregon has 3 subareas for the recreational Pacific halibut fishery



Changes to the Catch Sharing Plan for 2022

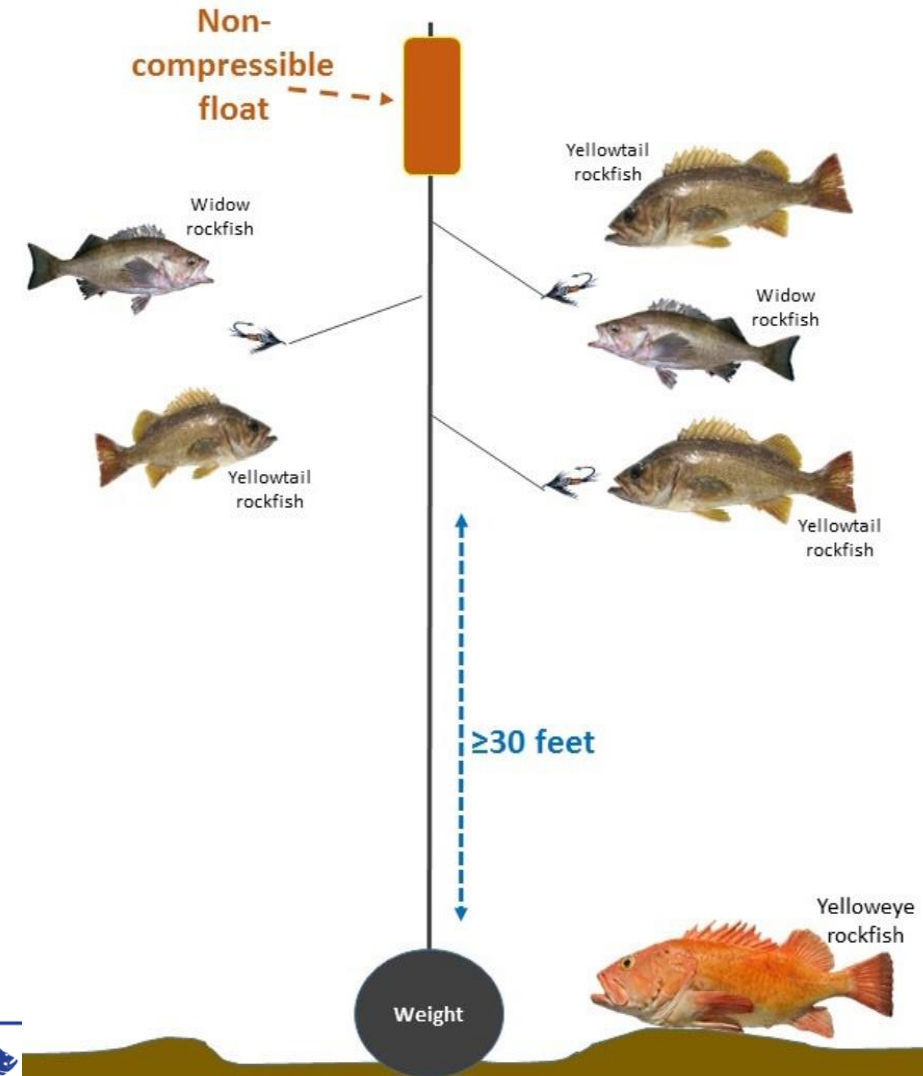
Added options to allow more flexibility and opportunity

- Central Oregon Coast Subarea
 - If spring all-depth quota is greater than 100,000 pounds, season may be open for up to 7 days per week (through June 30)
 - Then every other Thurs, Fri, and Sat until July 31 or quota caught
 - Weeks can be skipped to avoid adverse tides
 - If after the 1st summer all-depth opening, there is 60,000 pounds or more remaining, may be open for up to 7 days per week beginning Sept 1
 - At end of spring all-depth season managers will consult to determine if the daily bag limit can increase to 2 fish per day
- Southern Oregon Subarea
 - If the central coast bag limit is increased, Southern Oregon Subarea bag limit increases too at the same time



Another Recent Change Implemented

- Allow longleader gear fishing with all-depth halibut
 - Only outside of 40 fathom
 - Once rockfish onboard, no further halibut fishing can occur
 - Cannot be combined with sablefish, Pacific cod, or other flatfish on all-depth trips
 - Reasoning: Other bottomfish not allowed with longleader gear fishing in federal regulations
 - Lingcod also not allowed, not allowed with all-depth halibut nor longleader gear fishing



Update on Longleader Gear Fishing with All-Depth Halibut

- Part of the 2023-2024 federal biennial groundfish process
 - Modifying the groundfish regulations on longleader gear with all-depth halibut
 - Allow sablefish, P. Cod, and other flatfish **and** longleader gear fishing with all-depth halibut
 - Better meet intent of original request
 - Additional opportunity rather than alternative opportunity
- Need to make changes in halibut regulations as well
- Still support?



Other Recent Suggestions Not Implemented

- Return to 32-inch minimum size limit
- Reduce the annual bag limit
- *Details on following slides*



Return to 32-inch minimum size limit

- 32-inch minimum size removed starting with 2005 season
- Intended to reduce time on the water
 - Vessel/angler safety
 - Reduce impacts on yelloweye rockfish
- Neither WA nor CA have minimum size for recreational halibut
- IPHC looking at reducing or eliminating the minimum size limit for commercial fisheries
 - Modeling suggests will have minimal impact to stock overall
 - Possible small increased yield for fisheries



Return to 32-inch minimum size limit

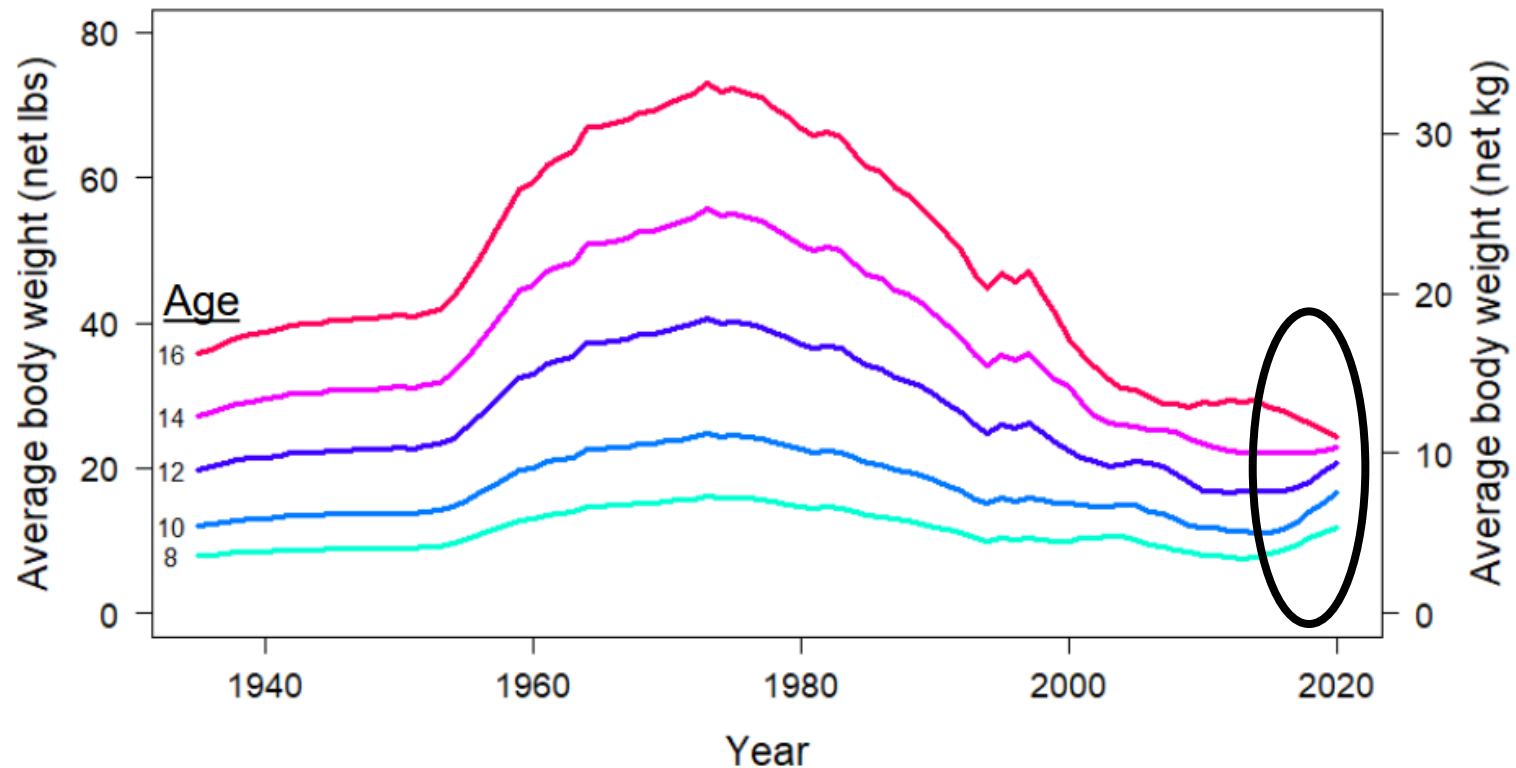
- Size at age of halibut is currently smaller than it was 25 years ago
- What is driving the decline in size at age?
 - Density dependence (competition with other halibut and other fish, especially arrowtooth flounder)
 - Environmental changes
 - Other unidentified processes
 - Combination of factors



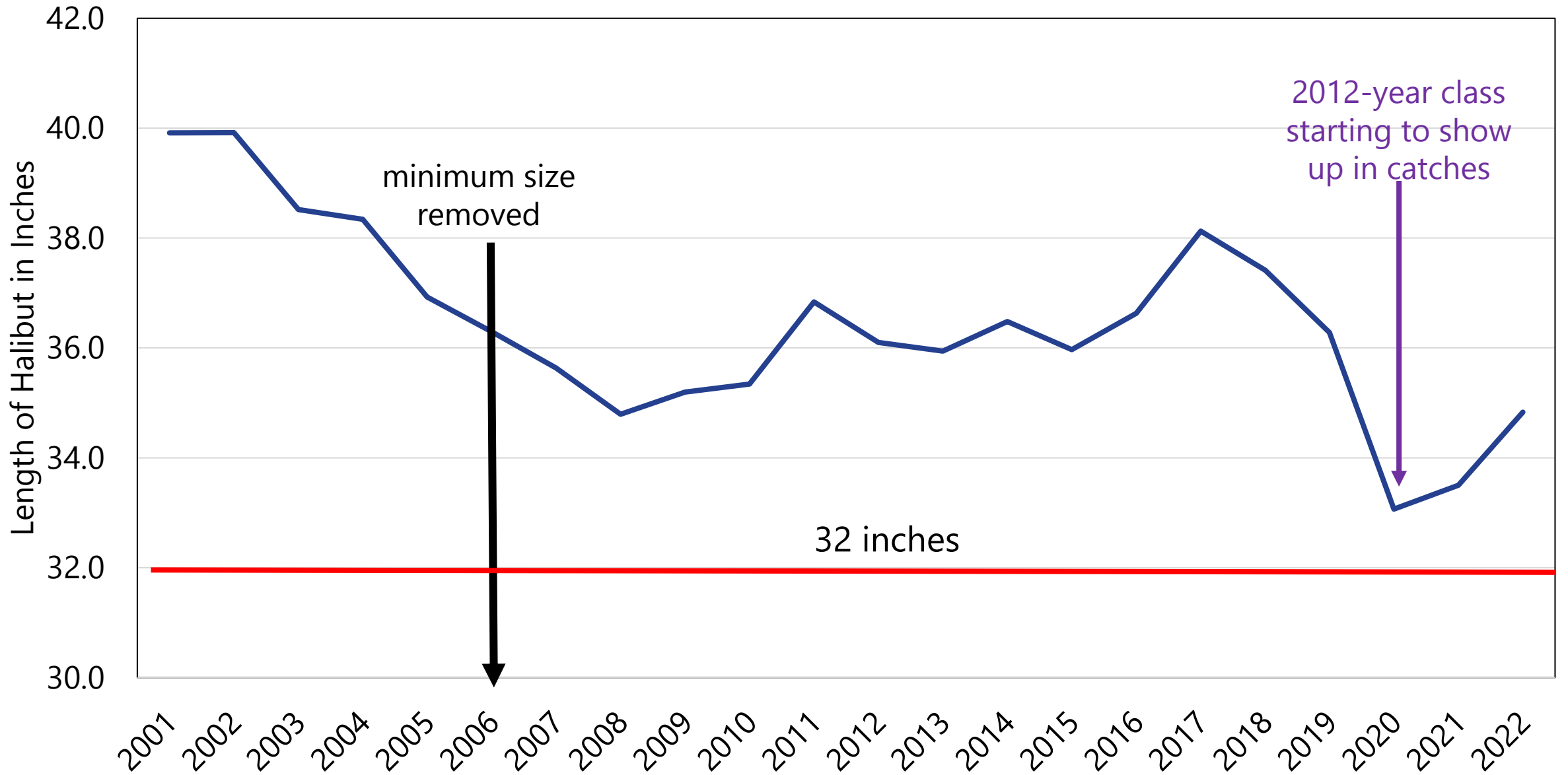
Return to 32-inch minimum size limit

- Females may be rebounding slightly (*info from IPHC annual meeting*)

Reconstructed coastwide female weight-at-age

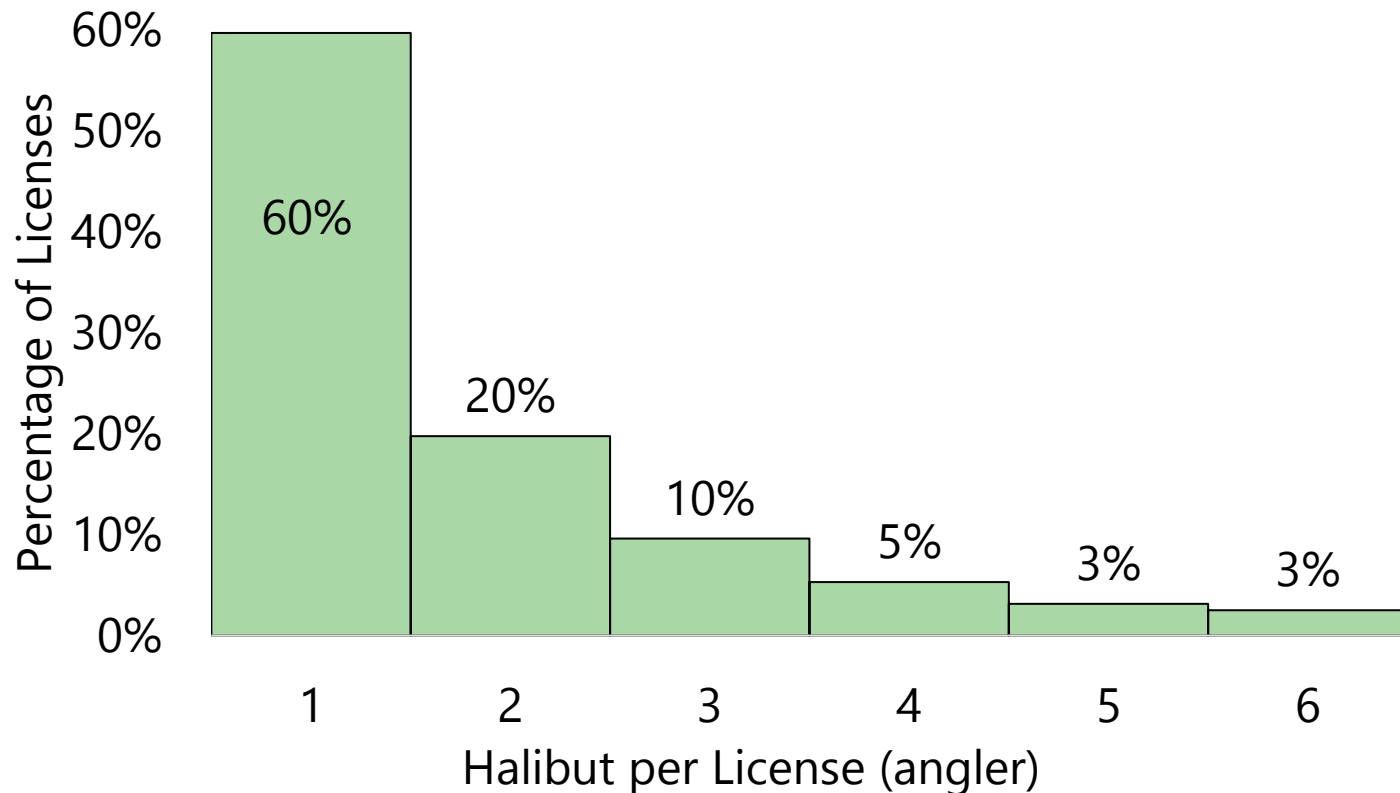


Annual Average Length of Sampled Pacific Halibut, 2001-2021



Reduce the Annual Bag Limit


- Majority of anglers (80%) who return their Combined Angling Tag with halibut recorded, only catch 1 or 2 halibut a year



Bag from 6 to:	% reduction in harvest
5	1.4%
4	4.6%
3	10.6%
2	22.1%
1	44.5%



Halibut Catch Sharing Plan (CSP)

- Process to implement changes for 2023 fishery:
 - **Late July/early Aug: ODFW solicits public input** 
 - September 2022: PFMC preliminarily adopts changes for 2023 for further public comment (Boise, ID) www.pcouncil.org
 - Late Sept / early Oct: ODFW solicits public input on specific proposals forwarded by PFMC
 - November 2022: PFMC adopts final changes for 2023 fishery (Garden Grove, CA) www.pcouncil.org
 - January 2023: IPHC Annual Meeting, quotas set (Victoria, BC) www.iphc.int



Input Received via Phone or E-mail, as of 7/20/2022

- Really like the 7-days per week all-depth, allows to fish around weather and work schedules
- Can the nearshore halibut line be moved out to 45 or 50 fm?
- Allow halibut caught in nearshore with bottomfish to be retained on all-depth days





Marine
Resources

Thank you

Marine Resources Program Oregon Department of Fish and Wildlife

2040 SE Marine Science Drive
Newport, OR 97365
(541) 867-4741

Contact us!

- lynn.mattes@odfw.Oregon.gov
- christian.t.heath@odfw.Oregon.gov
- Jessica.l.watson@odfw.Oregon.gov