



Marine
Resources

Public Meetings on the 2025 Recreational Halibut Seasons

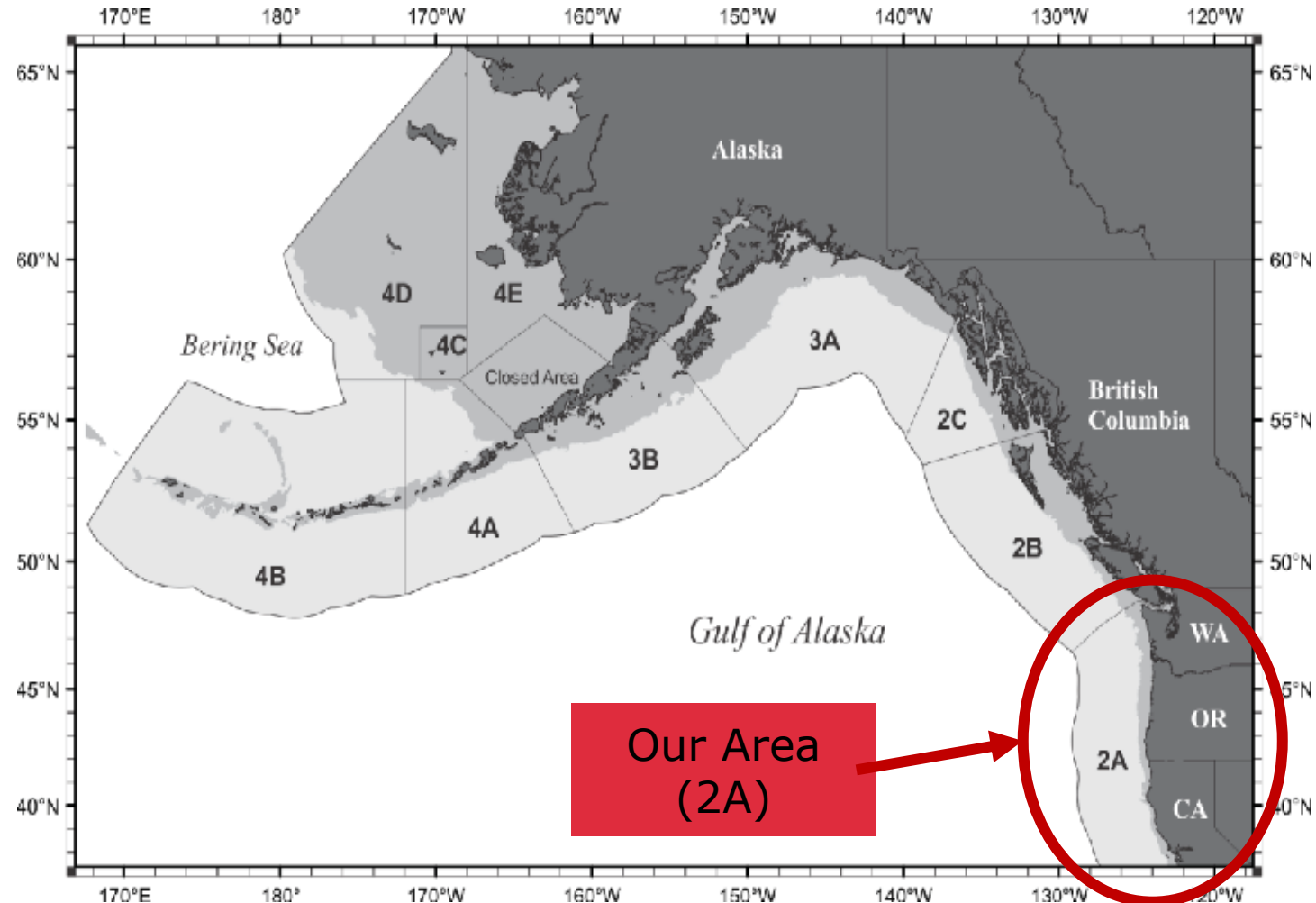
July 29, July 30, Aug 5,
and Aug 6, 2024



© Lynn Mattes

Meeting Outline

- Status of the Pacific halibut stock
- Area 2A allocations
- Recent suggested changes
- Discussion for 2025

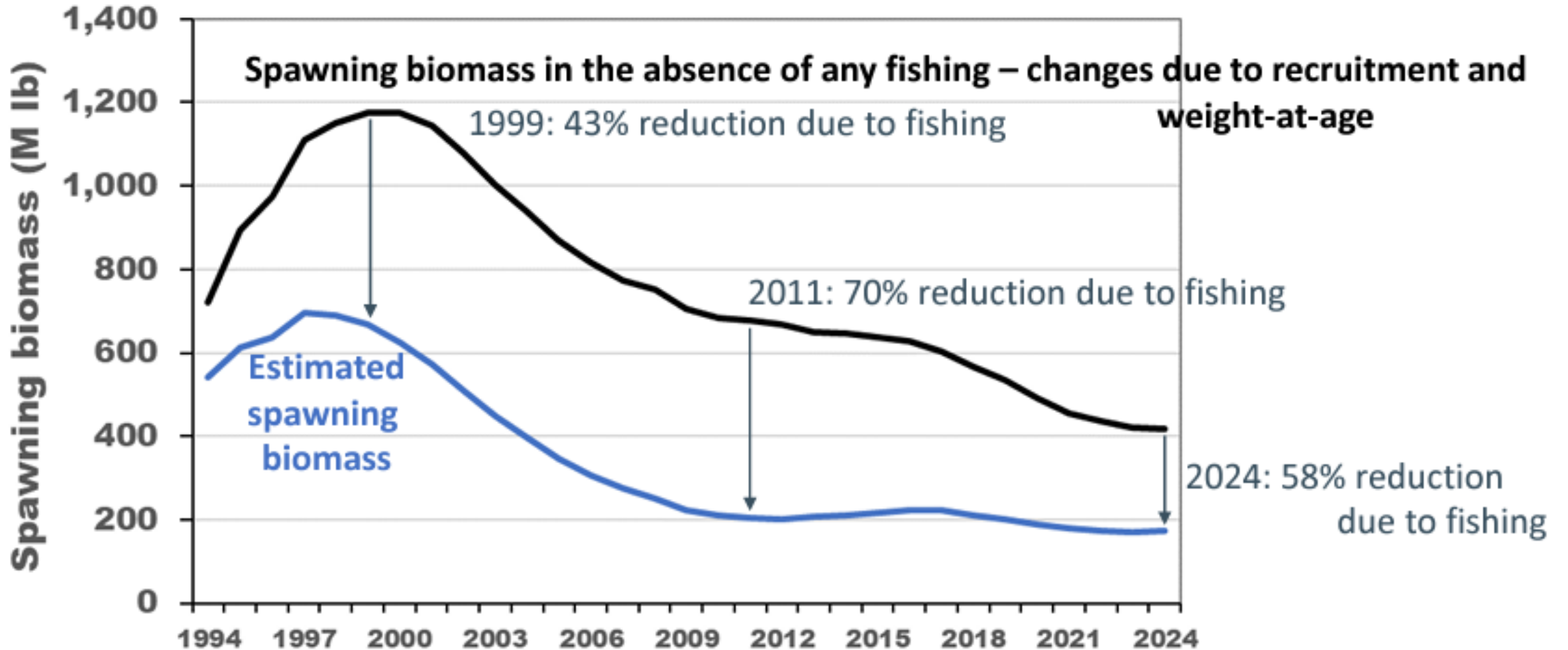


IPHC Annual Meeting Results

- Coastwide indices were down again in 2023
 - Lowest fishery performance/efficiency in 3 decades
 - Though in Area 2A (OR, WA and CA), indices were up slightly
- Both the IPHC survey and fisheries coastwide have largely transitioned to the 2012 year-class from the 2005 and older year-classes
- Very low recruitment from 2006-2011 continues to reduce the short-term productivity of the stock



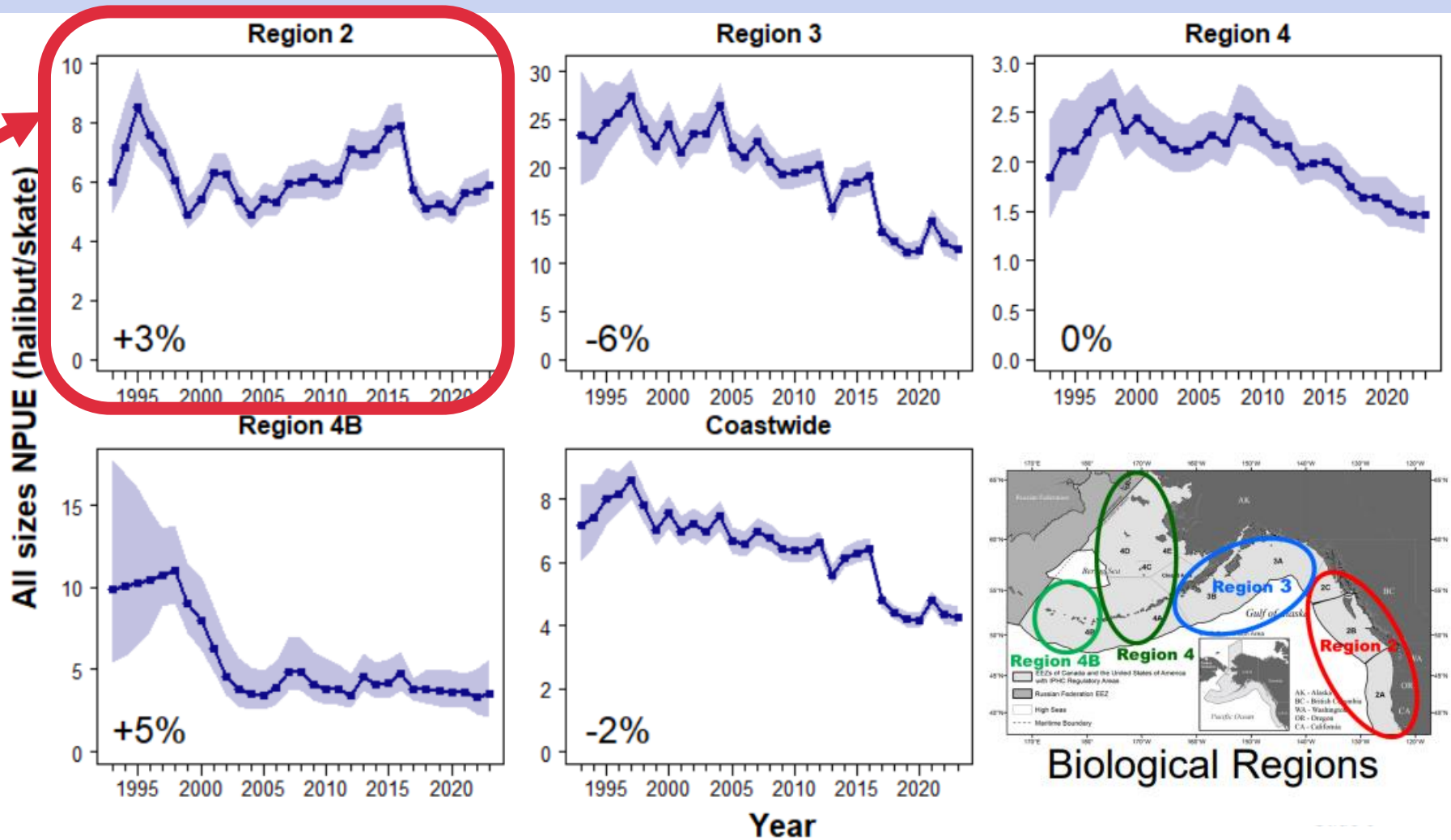
IPHC Annual Meeting Results



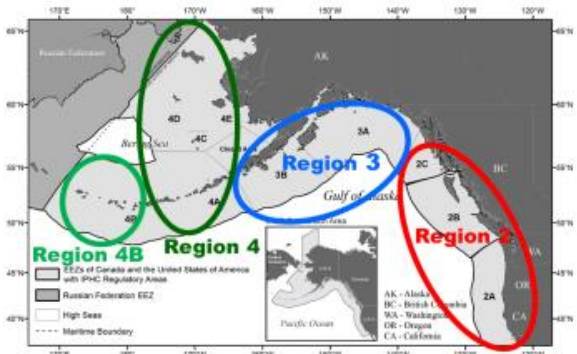
Modelled Survey Trends (Numbers)

Our area

Estimated % change from 2022 to 2023 is shown in bottom left



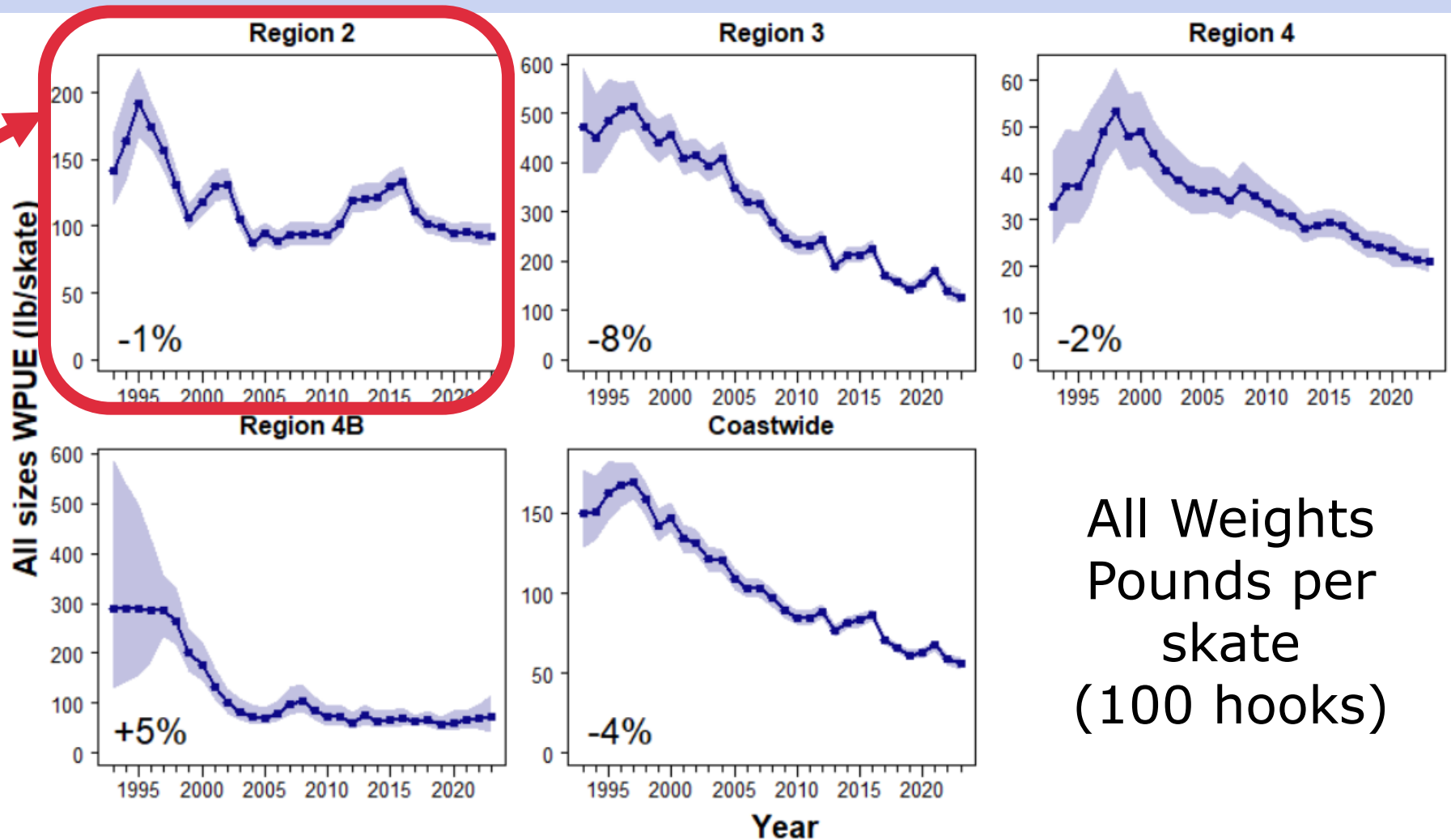
Source:
[IPHC Annual meeting](#)



Modelled Survey Trends (Weight)

Our area

Estimated % change from 2022 to 2023 is shown in bottom left

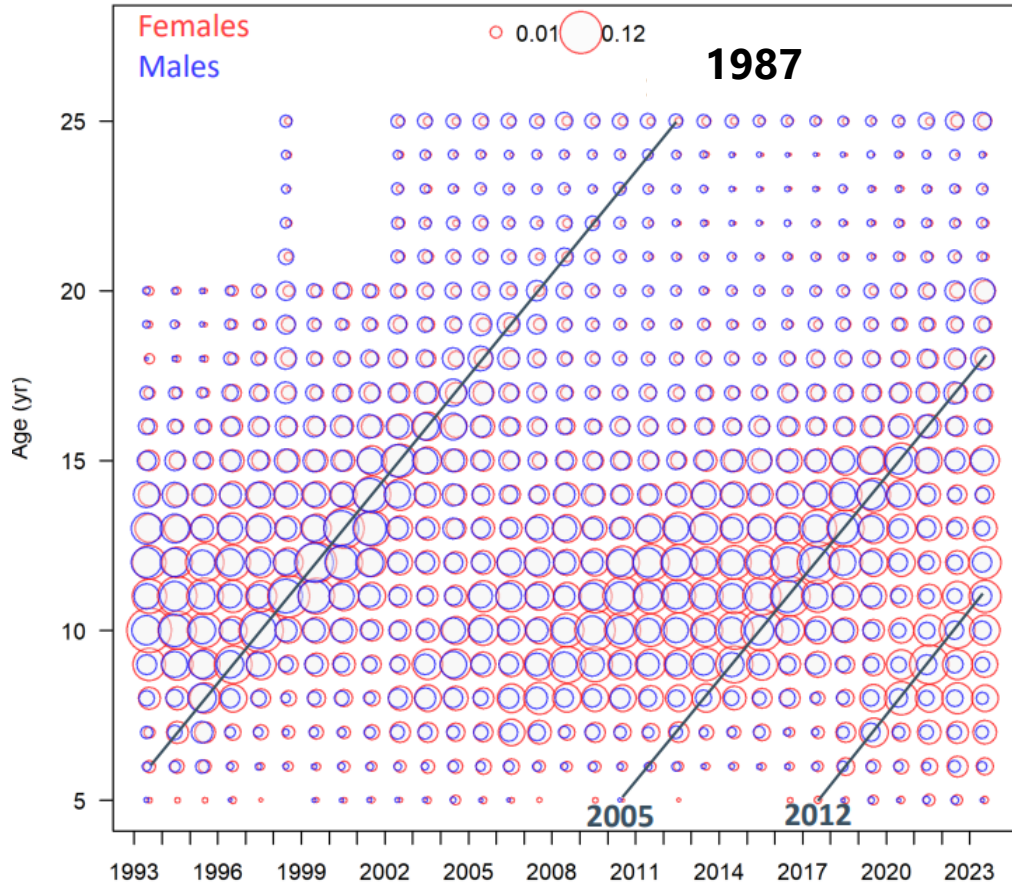


Source:
[IPHC Annual meeting](#)

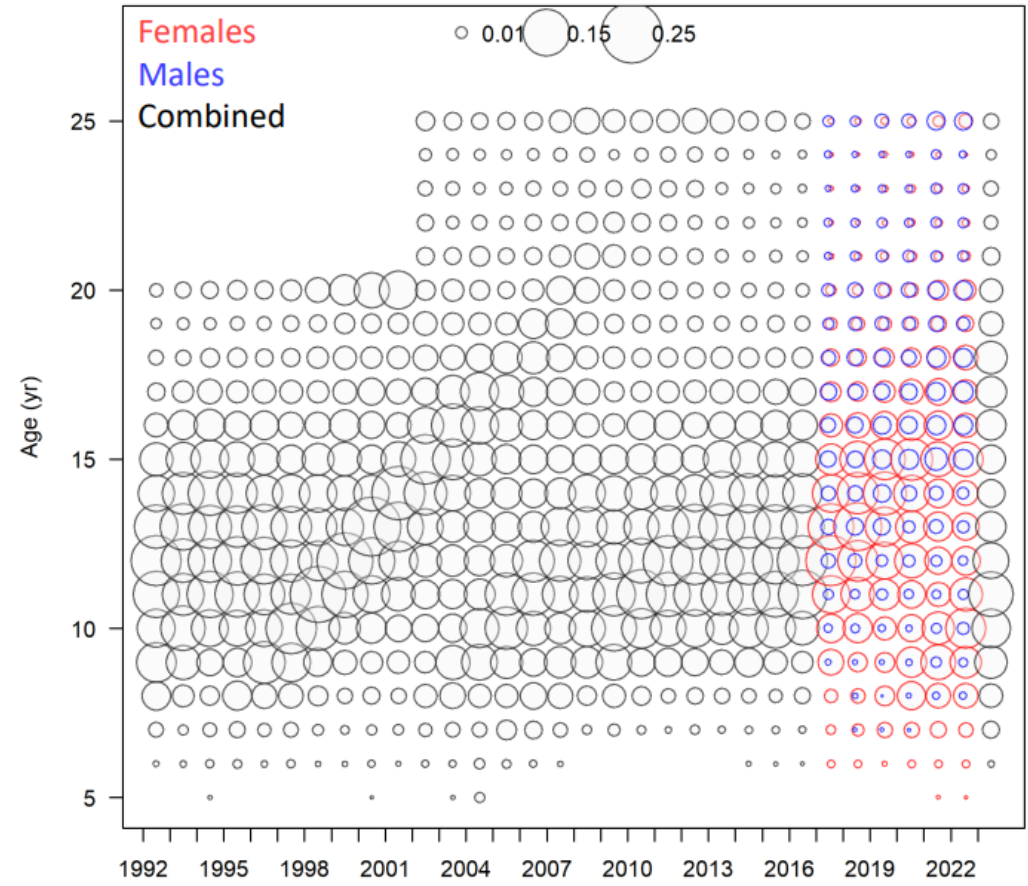
All Weights
Pounds per
skate
(100 hooks)



Age Trends (in weight)



Fishery Independent Setline Survey



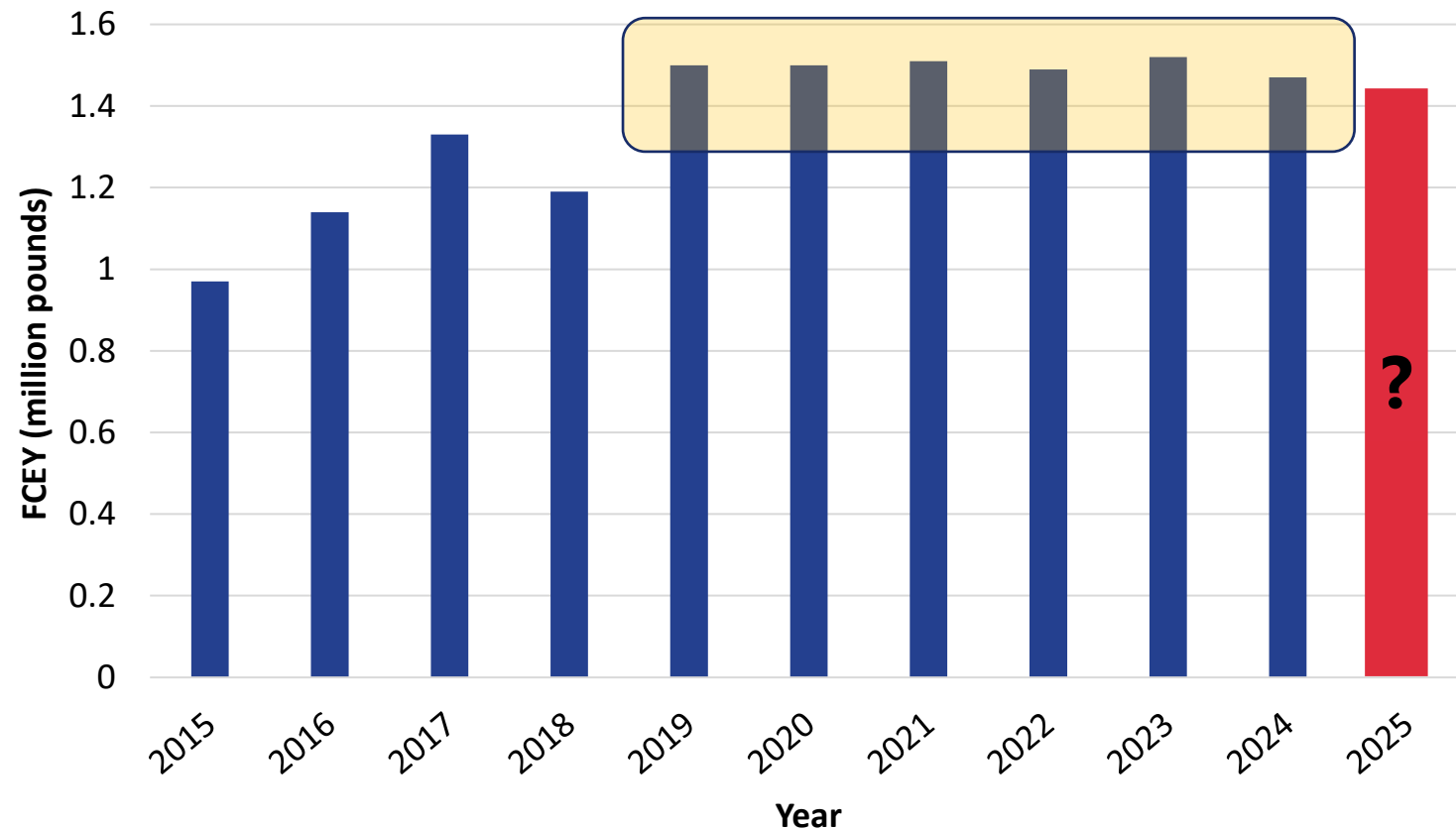
Fishery

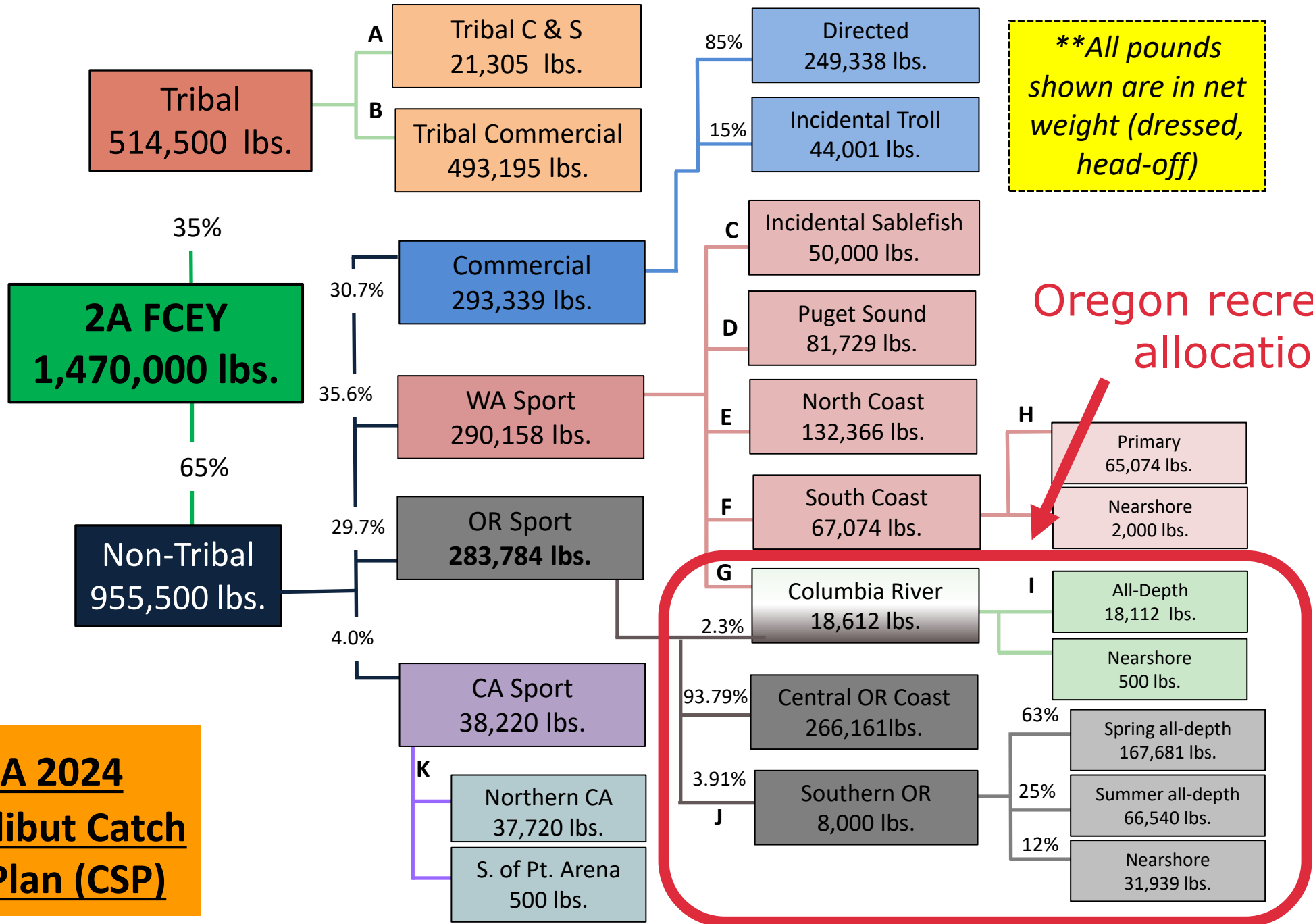


Area 2A Allocation

- 2018 through 2024
 - 1.5 million lbs. allocation
 - Stabilized fisheries
 - No biological concern
 - Low compared to AK & BC
- **2025 quota is unknown**
 - Determined by IPHC in January 2025
 - **A lower quota is a very real possibility for next year**

Area 2A Annual Fishery Constant Exploitable Yield (FCEY)



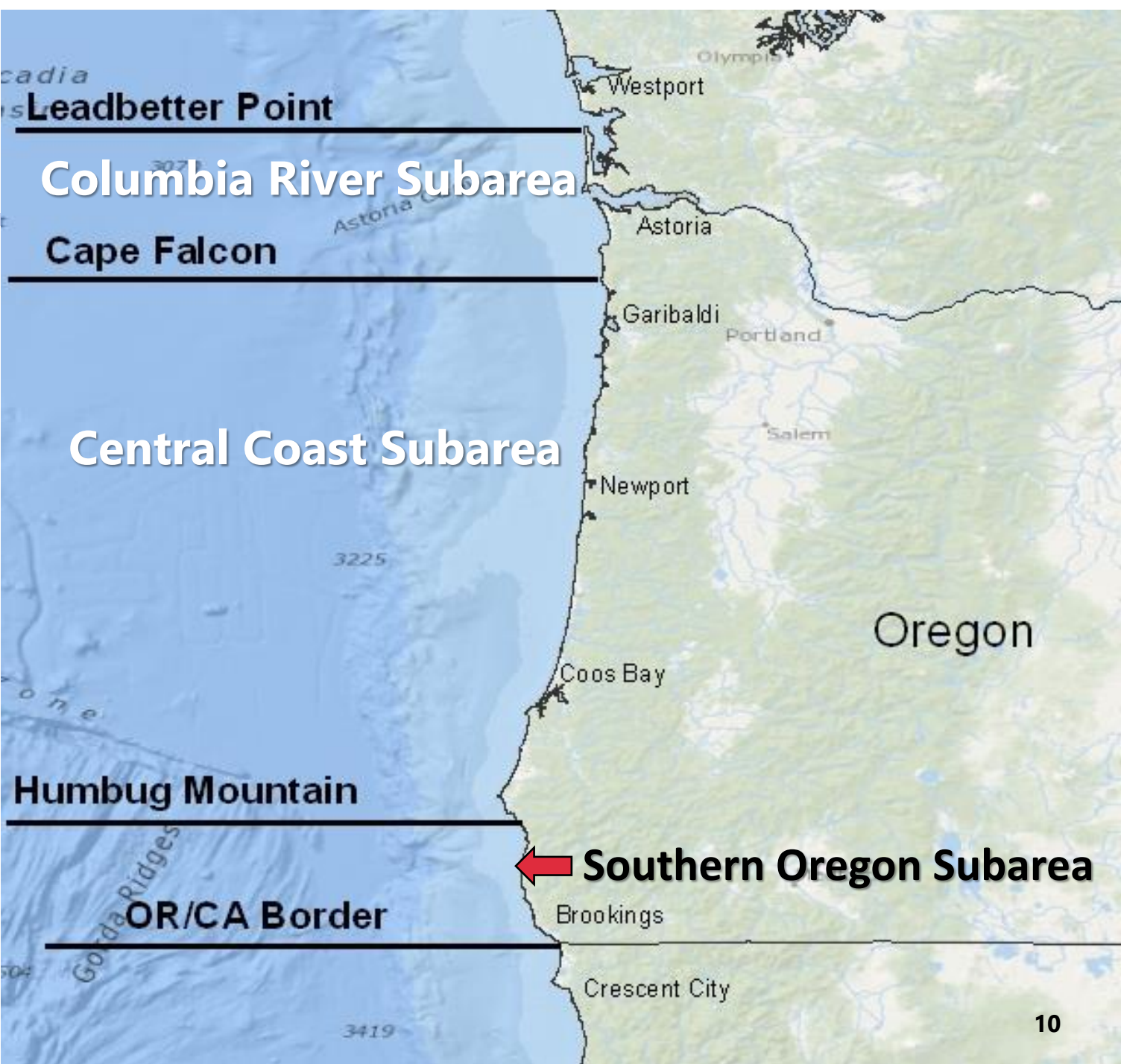


****All pounds shown are in net weight (dressed, head-off)**

Oregon recreational allocations

Area 2A 2024 Pacific Halibut Catch Sharing Plan (CSP)

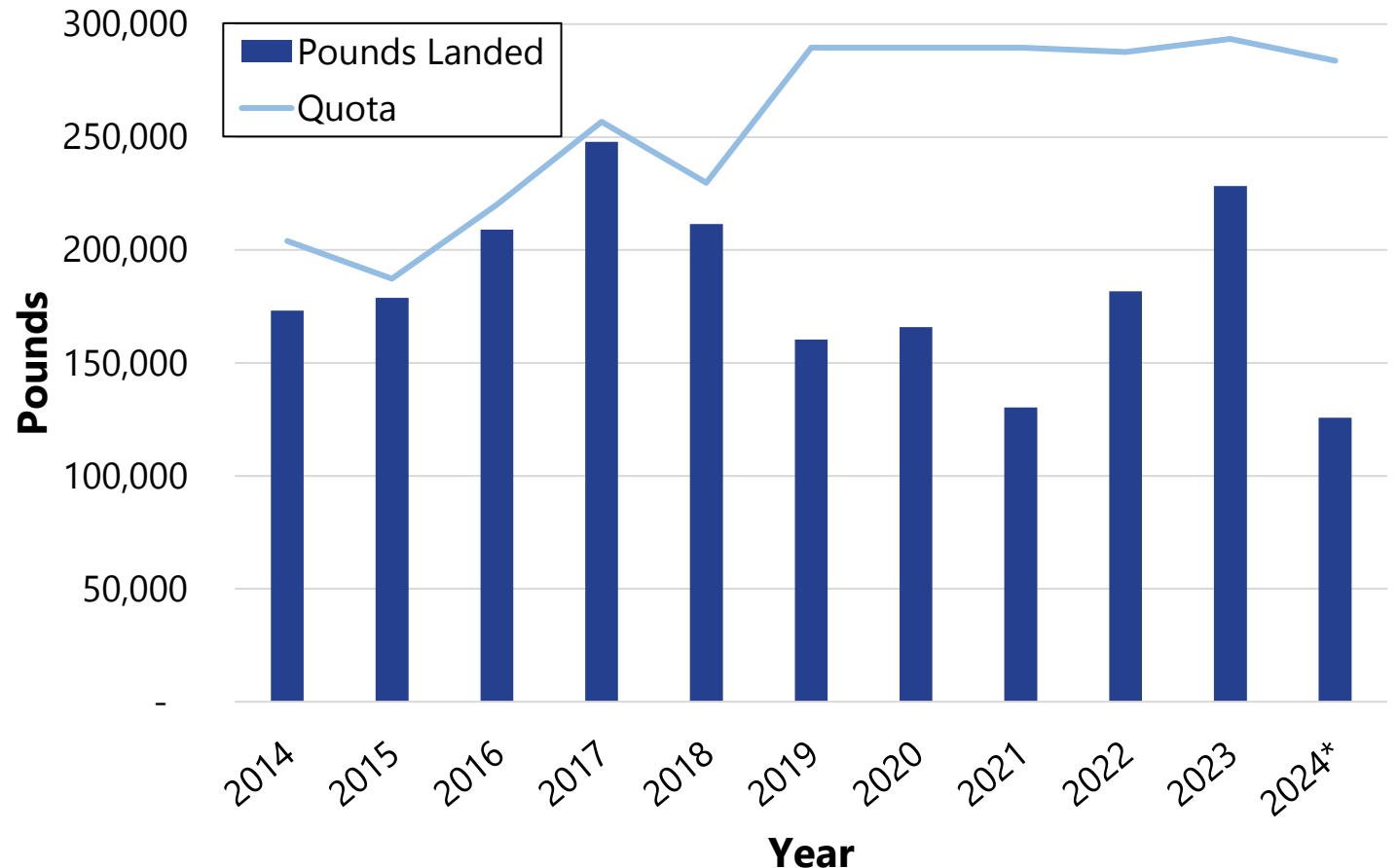
Oregon has 3 subareas for the recreational Pacific halibut fishery



Oregon Sport Pacific Halibut

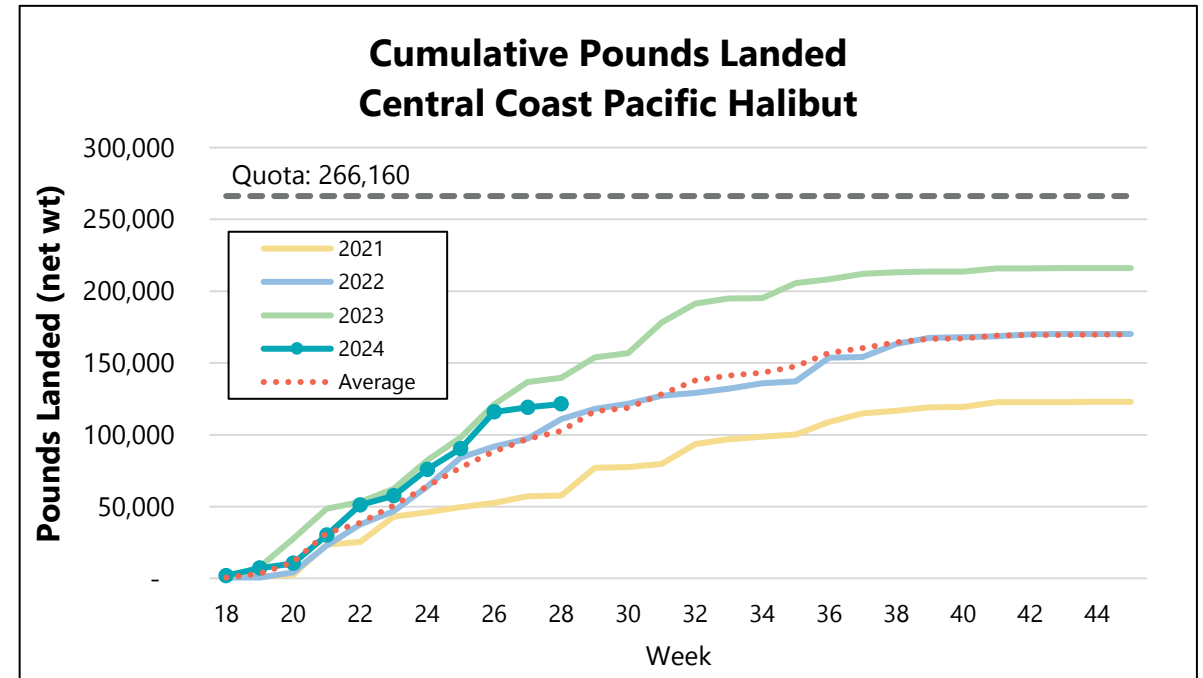
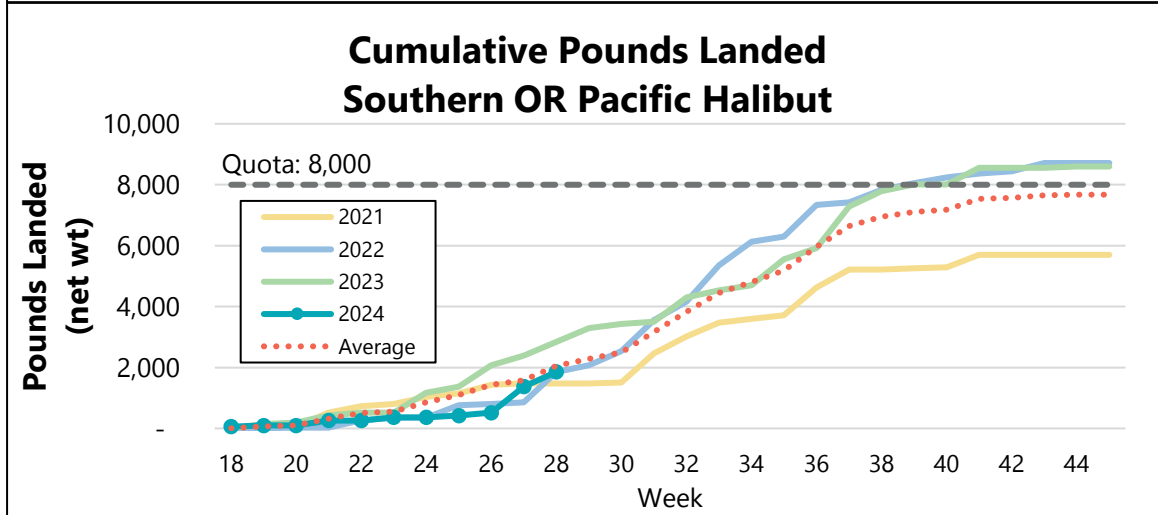
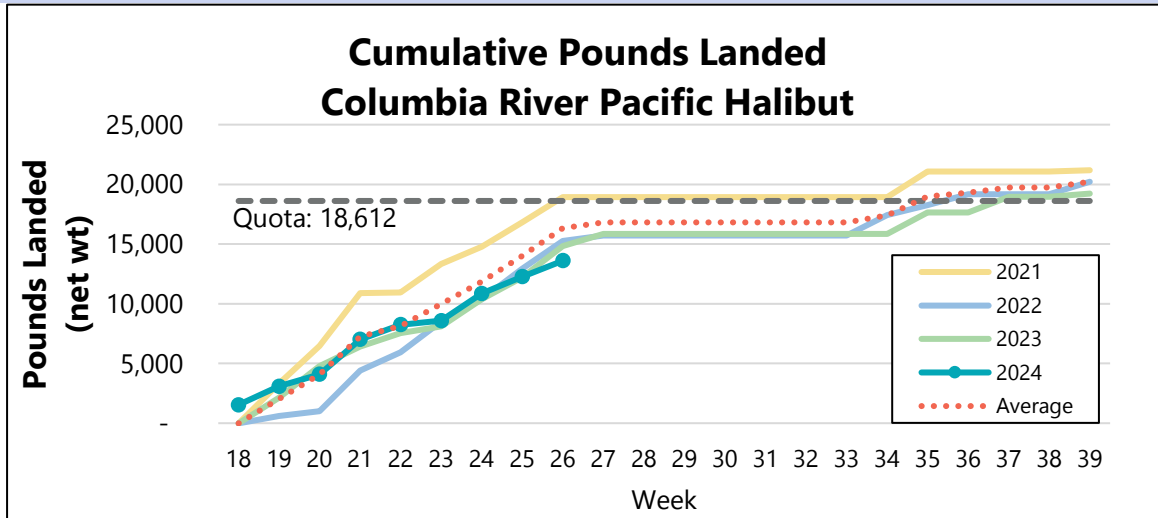
- Still a lot of pounds remaining for 2024
 - Columbia River subarea is at 75% attainment
 - Central Coast subarea is projected to be near the Spring all-depth allocation
 - Southern Oregon has about 77% of the allocation remaining
 - Just over 50% of the total Oregon quota remaining

Oregon Sport Pacific Halibut Pounds Landed and Quota



*Data for 2024 is through July 14

Oregon Sport: Quota Attainment by Subarea



Data for 2024 is preliminary (through July 14)



Planning for 2025

- 2025 CSP currently in development:
 - Any new suggestions / modifications?
 - ODFW to host a follow-up public meeting in September on proposed changes to the CSP
- 2025 quota will be set late January at the IPHC annual meeting
- Public meeting in February to discuss the 2025 season structure / all-depth fishing
- Oregon Fish & Wildlife Commission will adopt season dates in April



Halibut Catch Sharing Plan (CSP)

- Process to implement changes for 2025 fishery:
 - **Late July/early Aug: ODFW solicits public input** ←
 - September 2024: PFMC preliminarily adopts changes for 2025 for further public comment (Spokane, WA) www.pcouncil.org
 - Late Sept / early Oct 2024: ODFW solicits public input on specific proposals forwarded by PFMC
 - November 2024: PFMC adopts final changes for 2025 fishery (Costa Mesa, CA) www.pcouncil.org
 - January 2025: IPHC Annual Meeting, quotas set (Vancouver, B.C., Canada) www.iphc.int



Changes to the Catch Sharing Plan (CSP) for 2024

Added the following in 2024 to allow more flexibility and provide additional opportunity

- Columbia River Subarea
 - Open dates may be on Sundays, Tuesdays, and Thursdays
- Central Coast Subarea
 - Spring all-depth season back-up dates available every week
- Quota Shift Between States
 - Allows quota to shift between Washington, Oregon, and California
 - After August 15, any Pacific halibut that is projected to be unattained by one state may then become available to the other states



ODFW Ideas for the 2025 CSP

- Summer all-depth:
 - Change the summer all-depth season start date to August 1 instead of the first Thursday
 - Get up to 7-days per week set for August in the CSP

Inseason changes are not guaranteed and have proven to be more complicated since NMFS took over management of Pacific halibut
- Maybe we change it all up and remove the different seasons/fisheries in the Central Oregon Coast subarea and open on May 1 at all-depth with a two-fish bag limit per angler and go until quota is attained or October 31.
 - Currently, any quota that is projected to be unattained by end of year will be shared with other states.



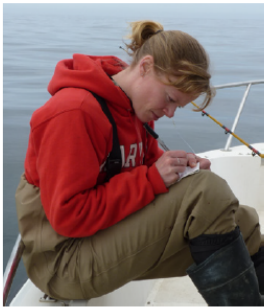


Marine Resources

Thank you

PACIFIC HALIBUT TAGGING REMINDER

IMMEDIATELY upon landing and keeping a Pacific halibut or salmon, you need to **record the fish on your Combined Angling Tag**



Immediately means:

- Prior to rebaiting and putting the rod back out to fish
- Before taking a snack or drink break
- Not 5, 10, or 15 minutes later
- Do not wait until you are on the way back to the dock



If using electronic tagging, make sure to download the MyODFW app and log in before you leave the dock

- If you are in an area with poor cell service, toggle the app to offline mode (under Settings) or put your phone in Airplane mode
- Once the app is open, you can record your fish
- When you get back into cell service, toggle back to online mode in the app, and it will upload tagged fish to the system

Marine Resources Program
Oregon Department of Fish and Wildlife

2040 SE Marine Science Drive
Newport, OR 97365
541-867-4741

Contact us!

- christian.t.heath@odfw.oregon.gov
- melanie.a.bukovec@odfw.oregon.gov

