



Marine  
Resources

# Public Meeting on the 2026 Recreational Pacific Halibut Seasons

Meeting will begin  
at 6:00 pm

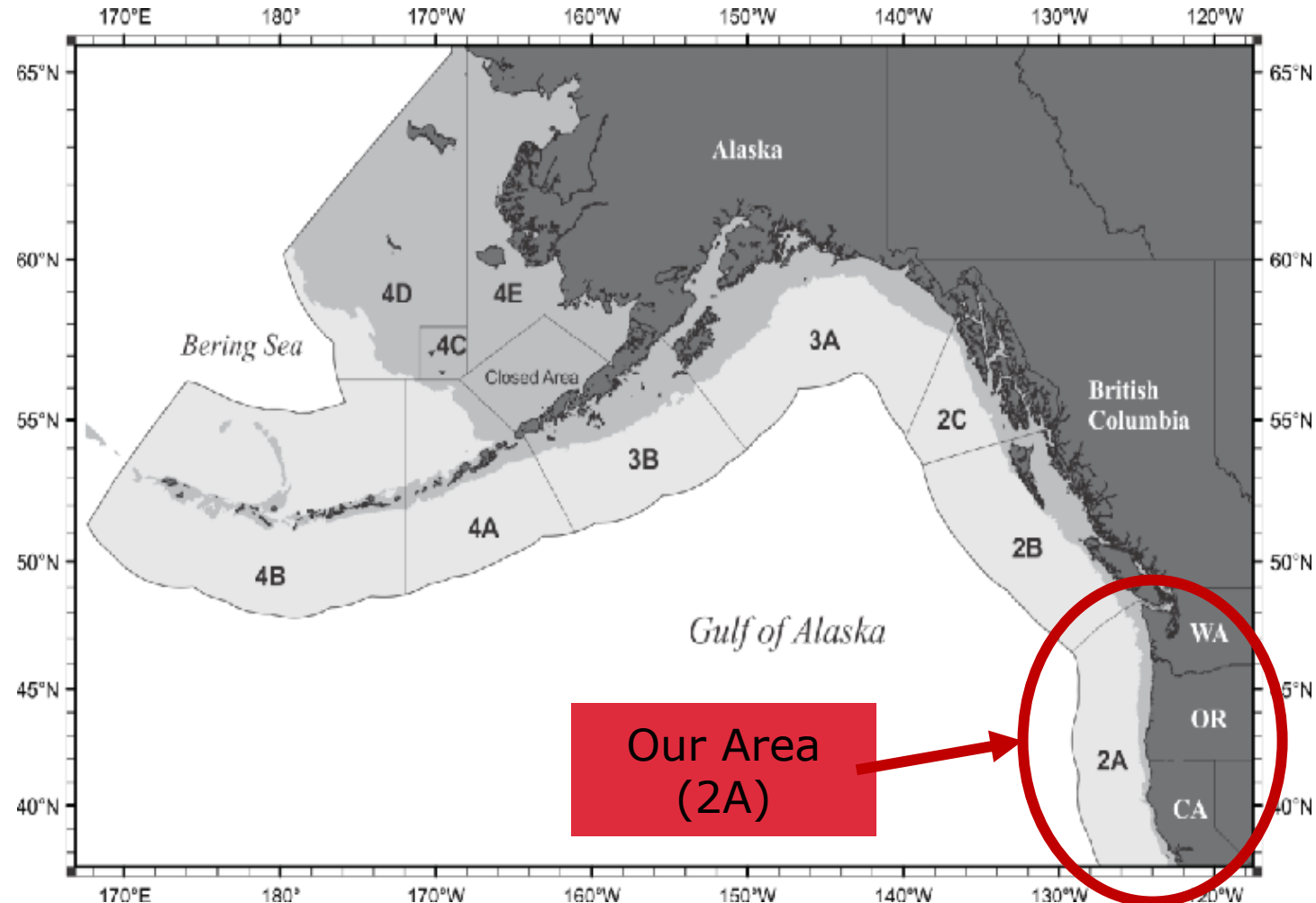
July 29, 2025



© Melanie Bukovec

# Meeting Outline

- Status of the Pacific halibut stock
- Area 2A allocations
- Recent suggested changes
- Discussion for 2026

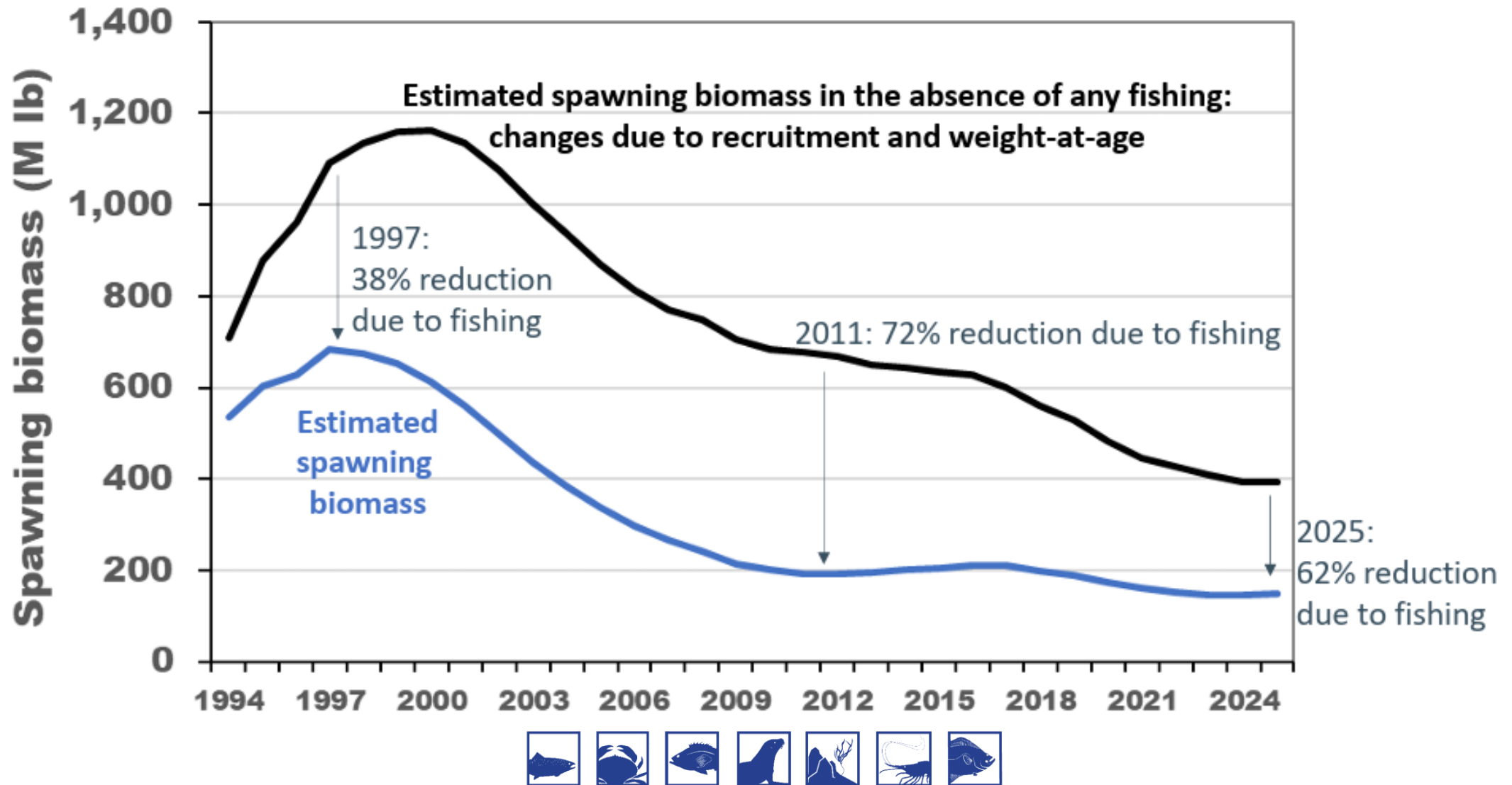


# IPHC Annual Meeting Results

- Coastwide indices were down again in 2024
  - Lowest mortality in 100 years
  - Though in Area 2A (OR, WA and CA), indices were up slightly
- Fisheries coastwide are fishing the 2012 year-class, but the IPHC survey saw more of the 2016 year-class
  - Continue to shift from older to younger fish
- The stock remains at a low productivity level due to low weight-at-age and low recruitment through at least 2016



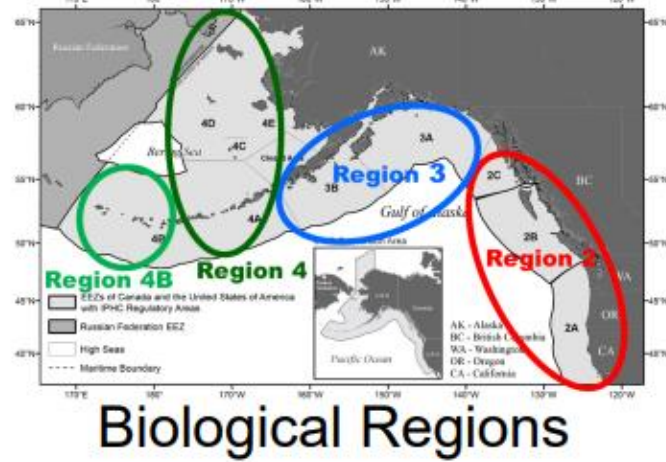
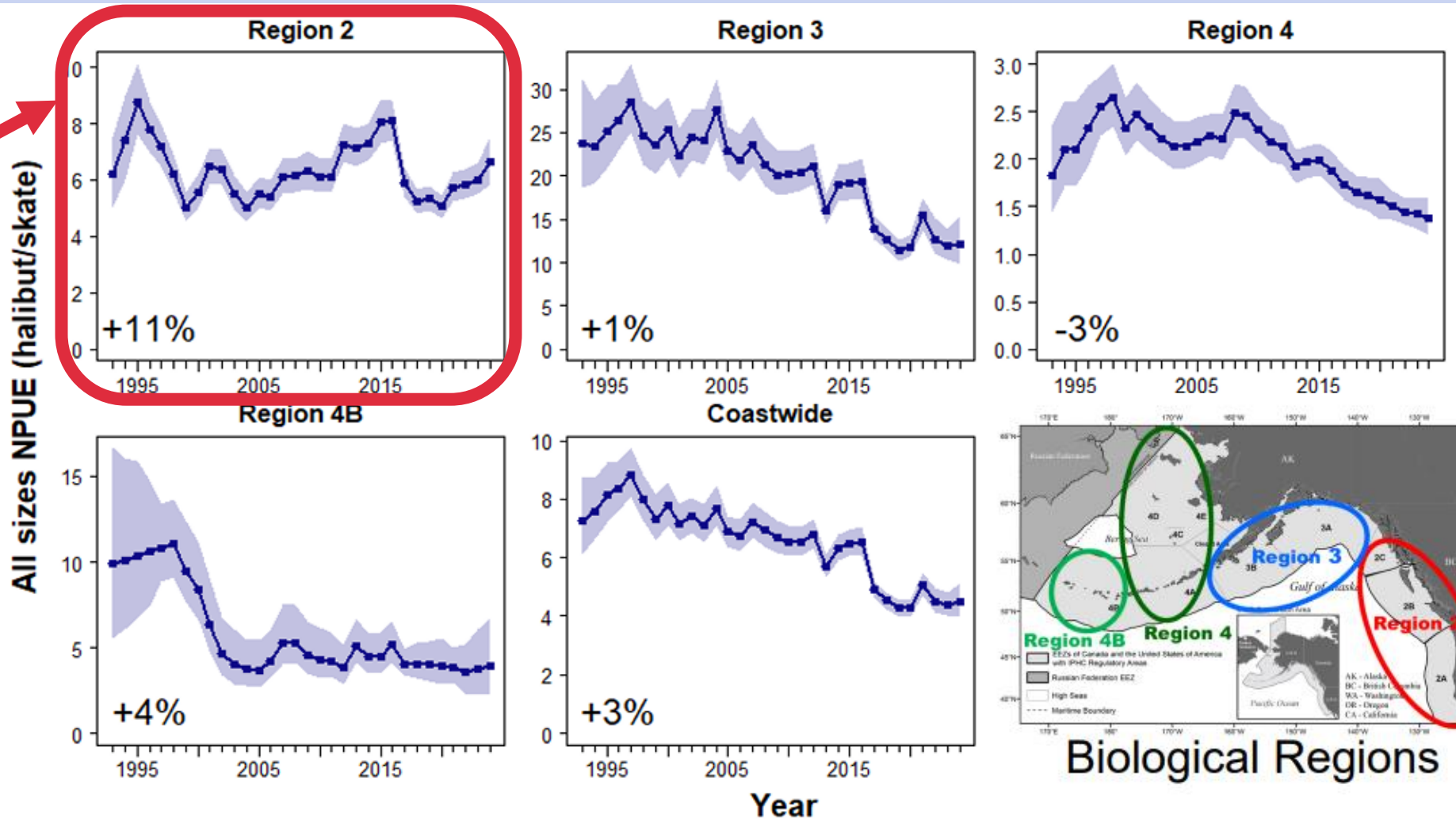
# IPHC Annual Meeting Results



# Modelled Survey Trends (Numbers)

Our area

Estimated % change from 2023 to 2024 is shown in bottom left



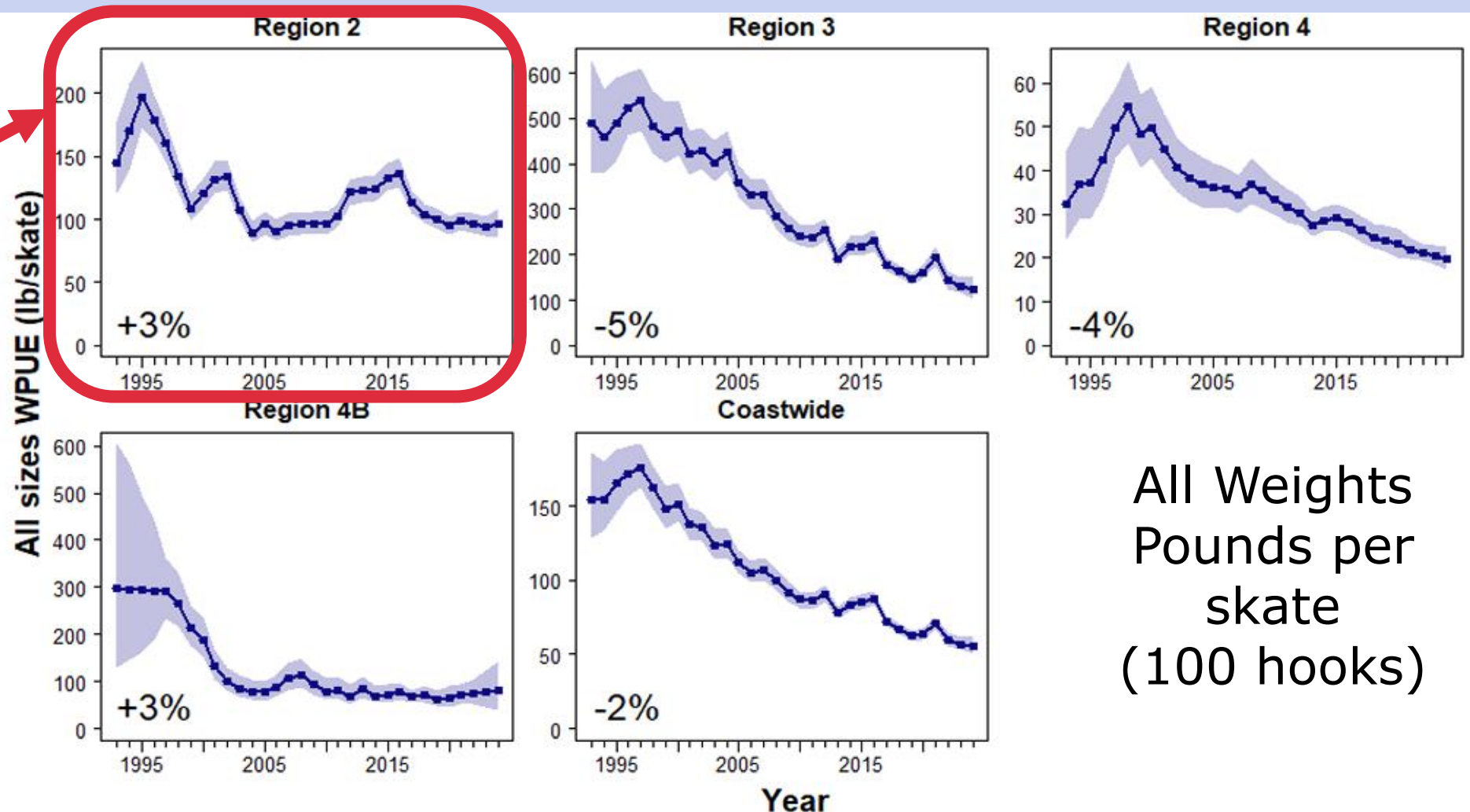
Source:  
[IPHC Annual Meeting](#)



# Modelled Survey Trends (Weight)

Our area

Estimated % change from 2023 to 2024 is shown in bottom left

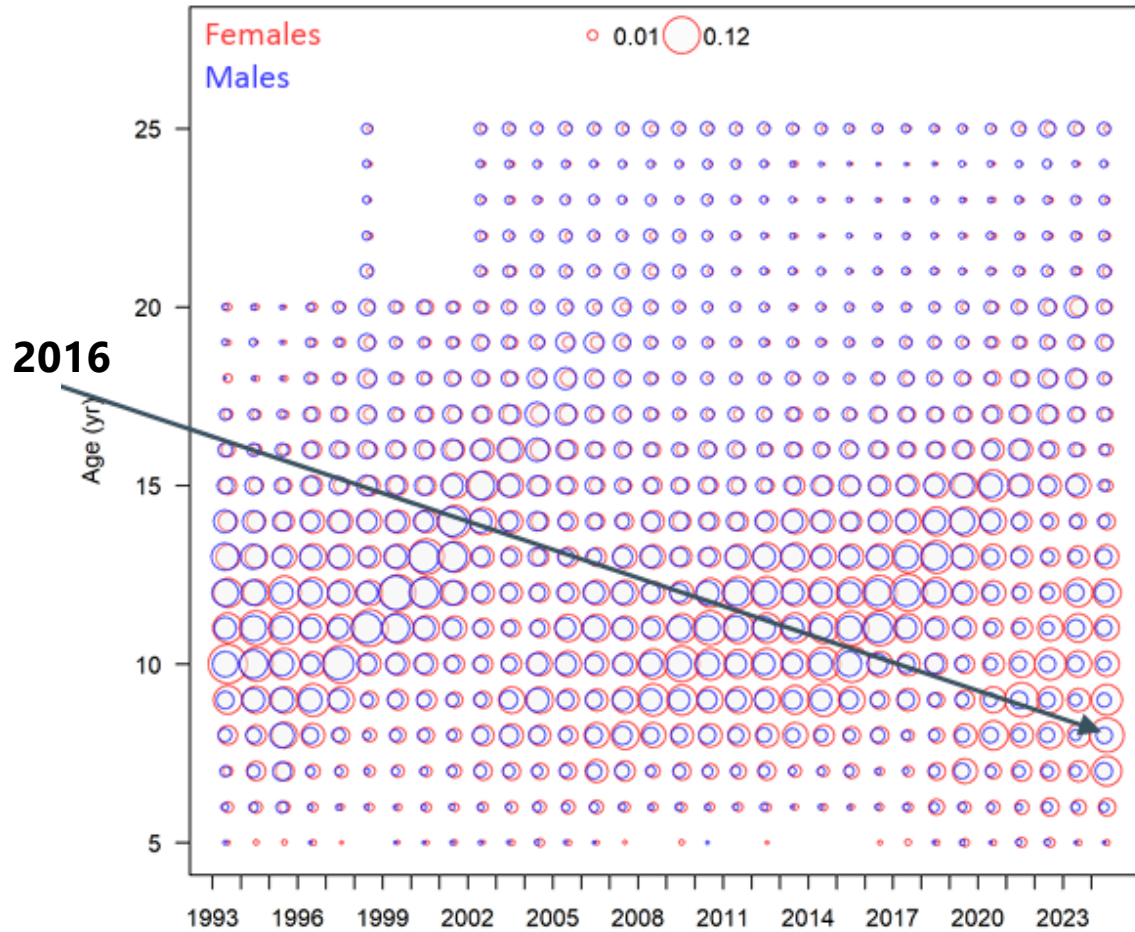


All Weights  
Pounds per  
skate  
(100 hooks)

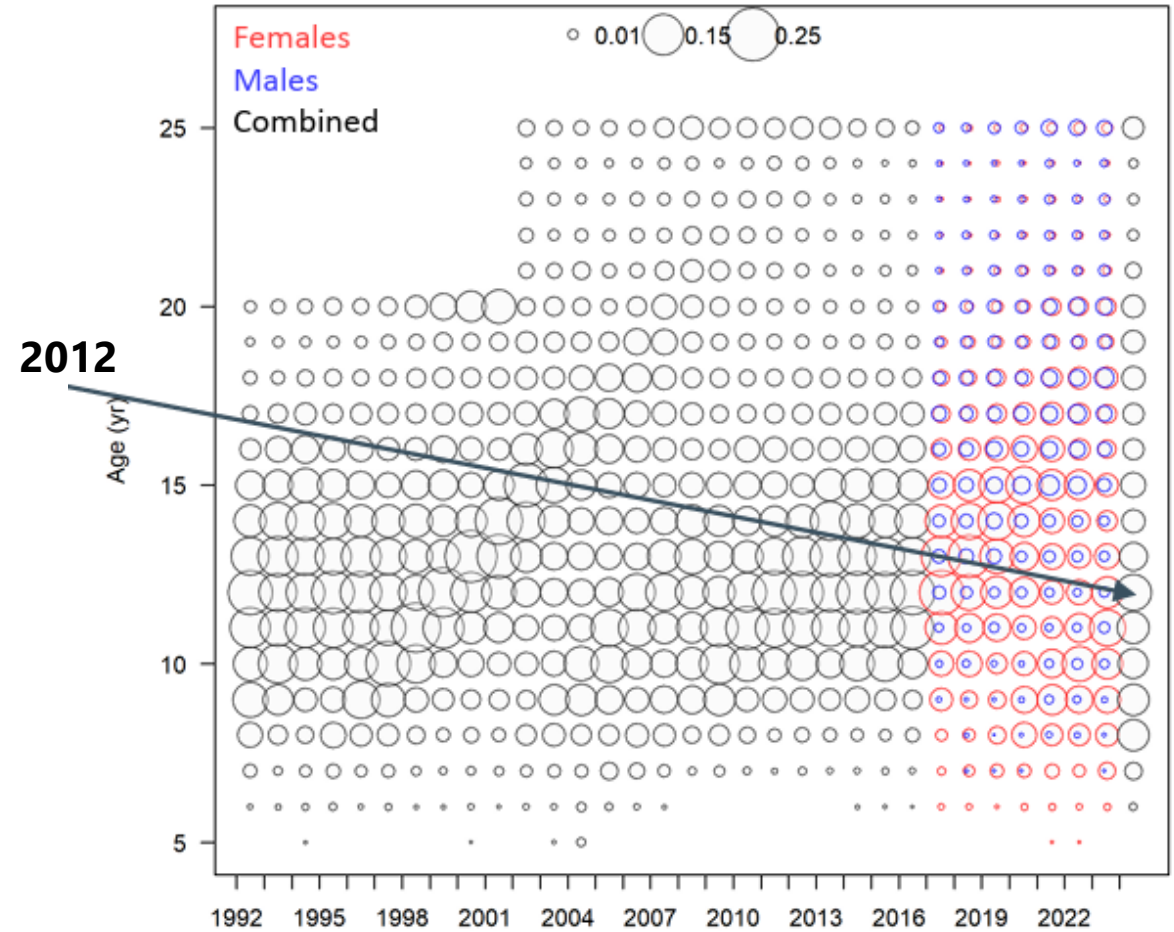
Source:  
[IPHC Annual Meeting](#)



# Age Trends (in weight)



**Fishery Independent Setline Survey**



**Fishery**



# Fishery Independent Setline Survey

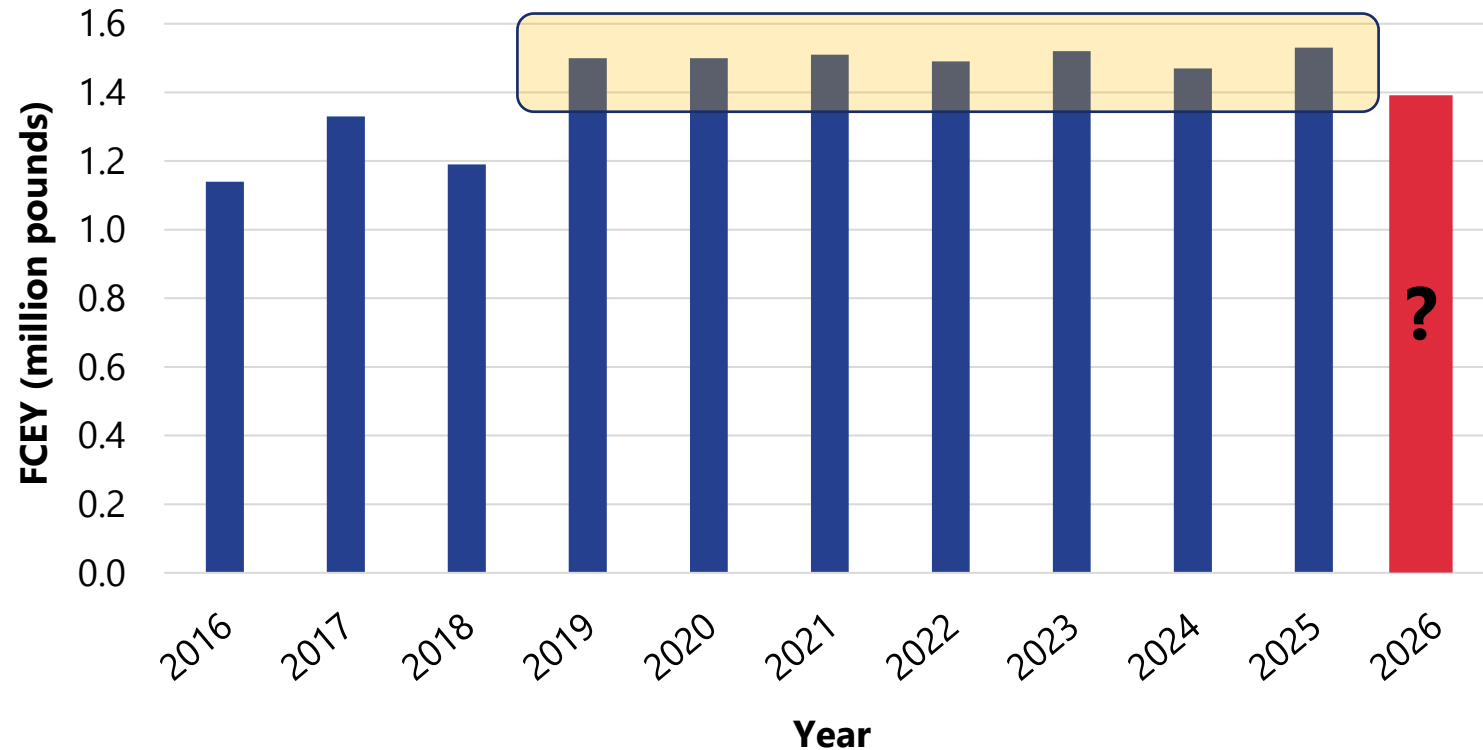
- IPHC FISS survey sampled part of Oregon
- Encountered large areas of hypoxia and lower halibut numbers
- Not sure how IPHC will account for the hypoxic areas or what that will mean for the 2026 quota

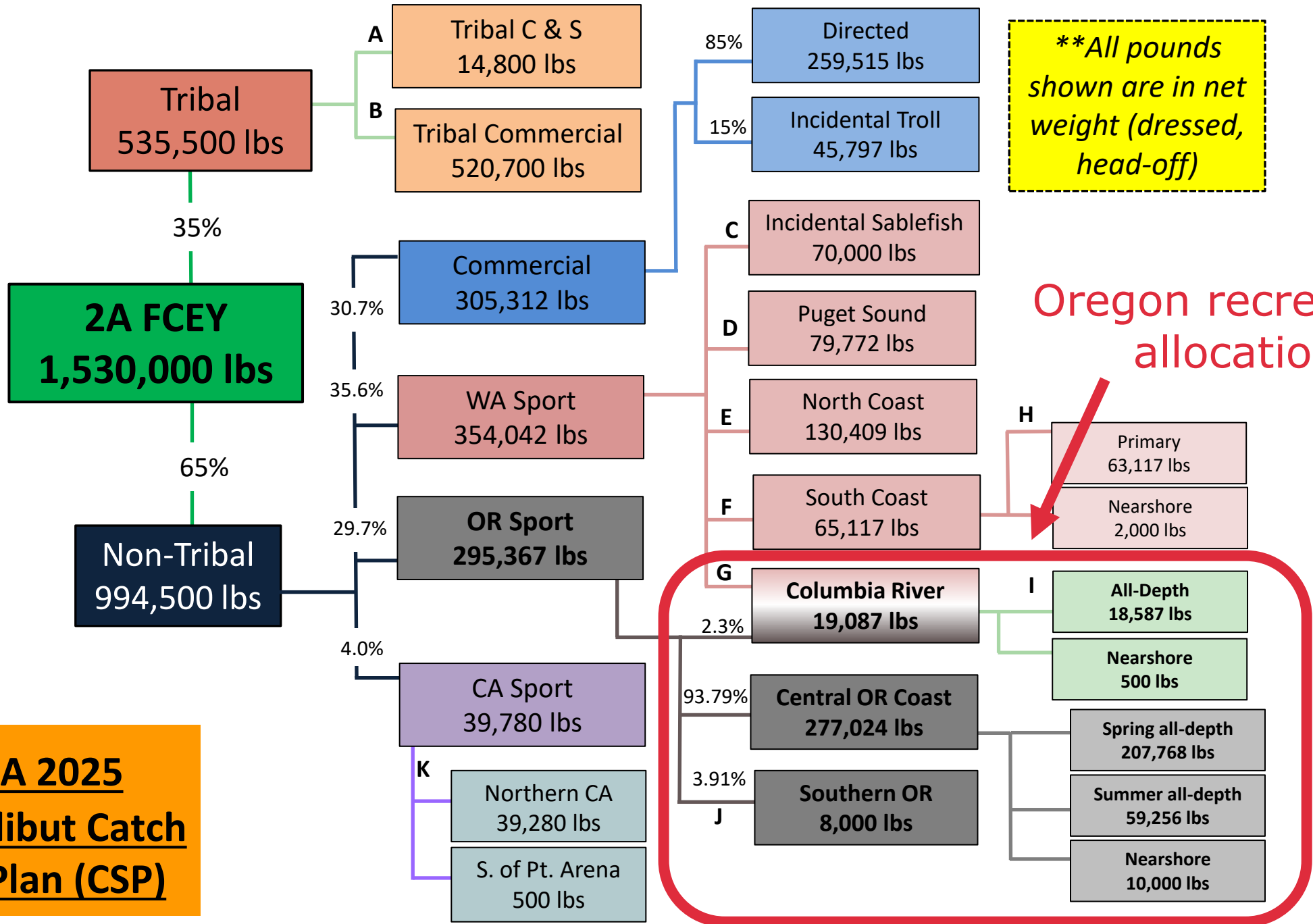


# Area 2A Allocation

- 2018 through 2025
  - 1.5 million lbs allocation
  - Stabilized fisheries
  - No biological concern
  - Low compared to AK & BC
- **2026 quota is unknown**
  - Determined by IPHC in January 2026
  - **A lower quota is a very real possibility for next year**

**Area 2A Annual Fishery Constant Exploitable Yield (FCEY)**





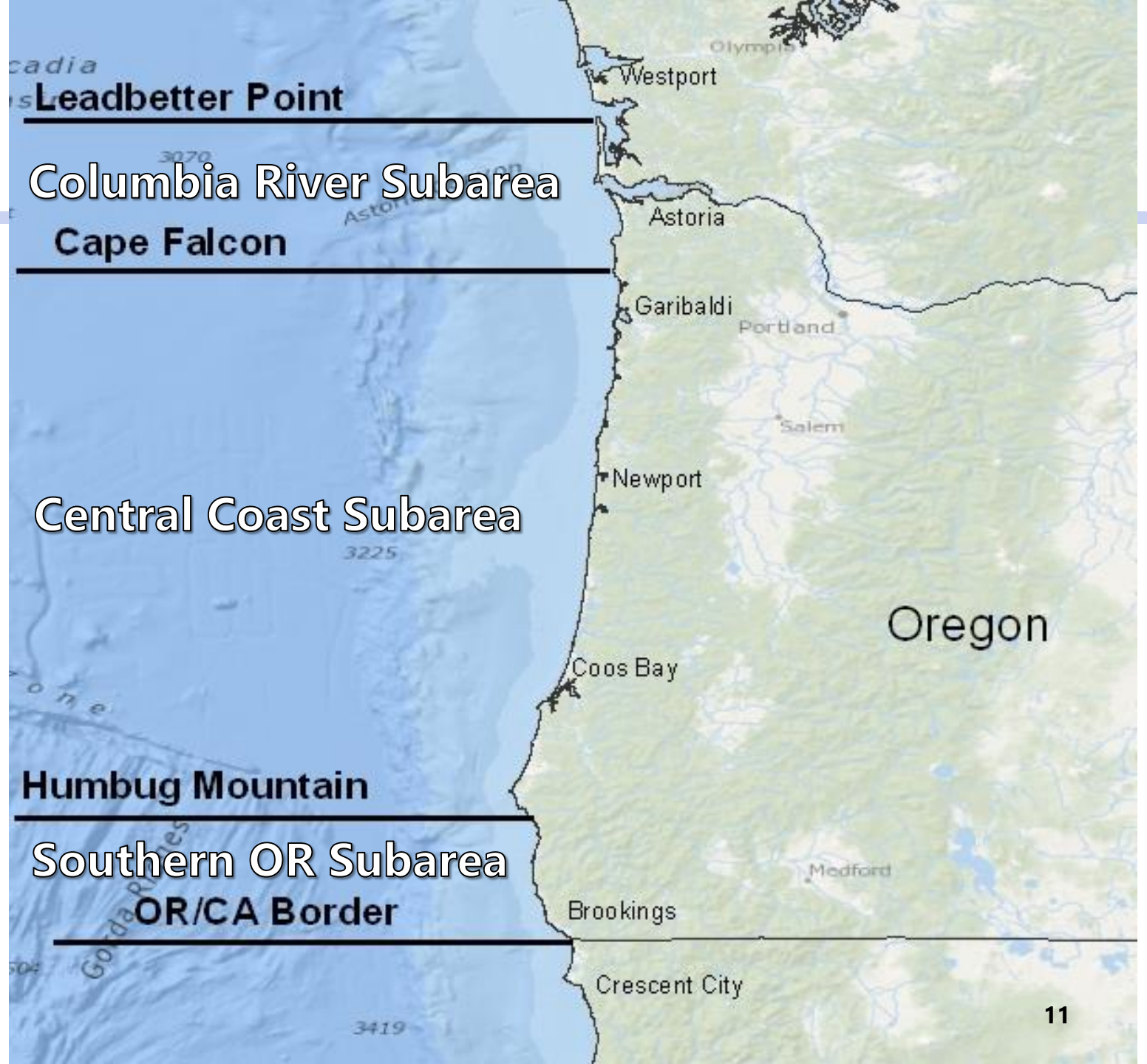
**\*\*All pounds shown are in net weight (dressed, head-off)**

**Area 2A 2025 Pacific Halibut Catch Sharing Plan (CSP)**



Marine  
Resources

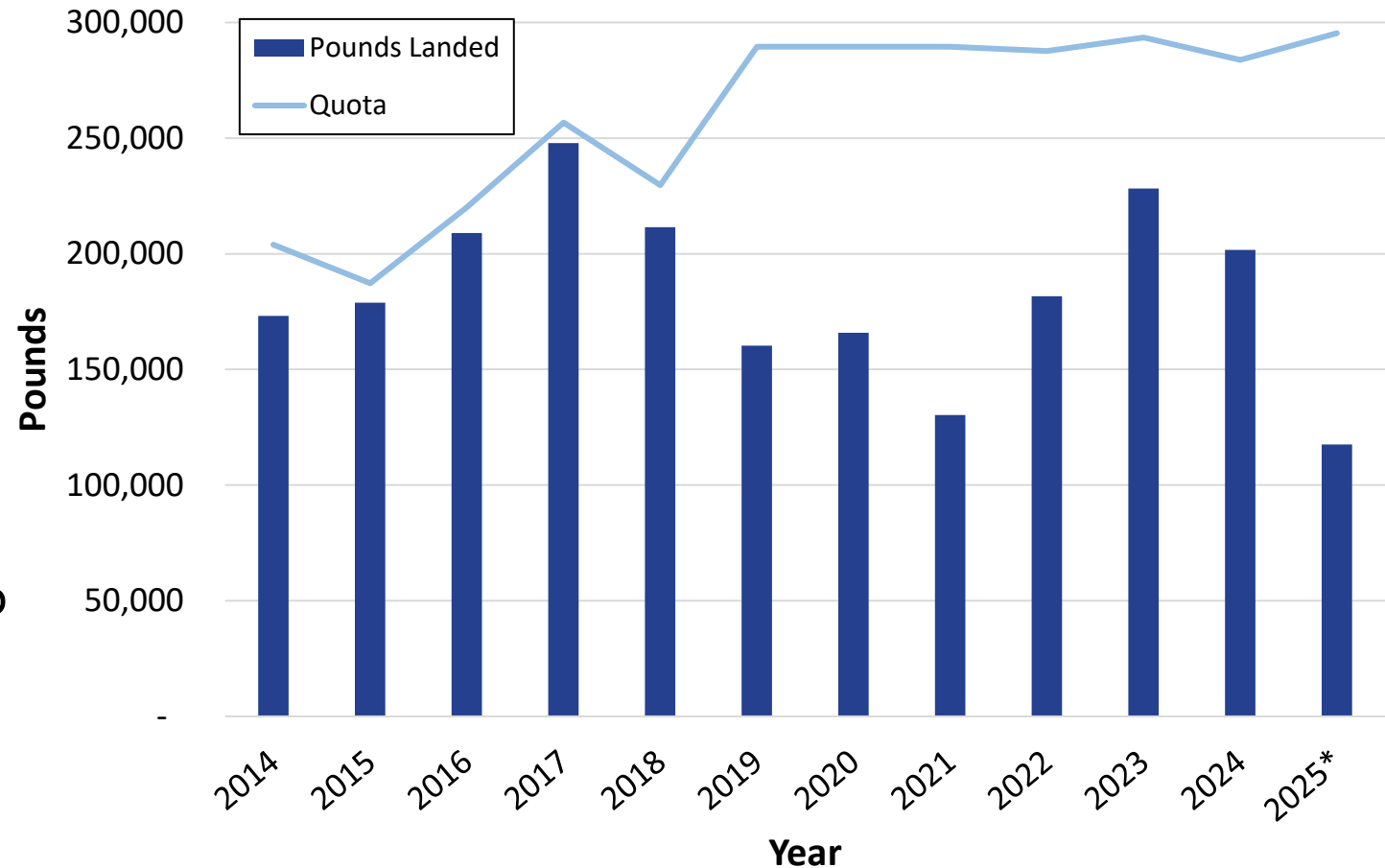
Oregon has 3  
subareas for the  
recreational  
Pacific halibut  
fishery



# Oregon Sport Pacific Halibut

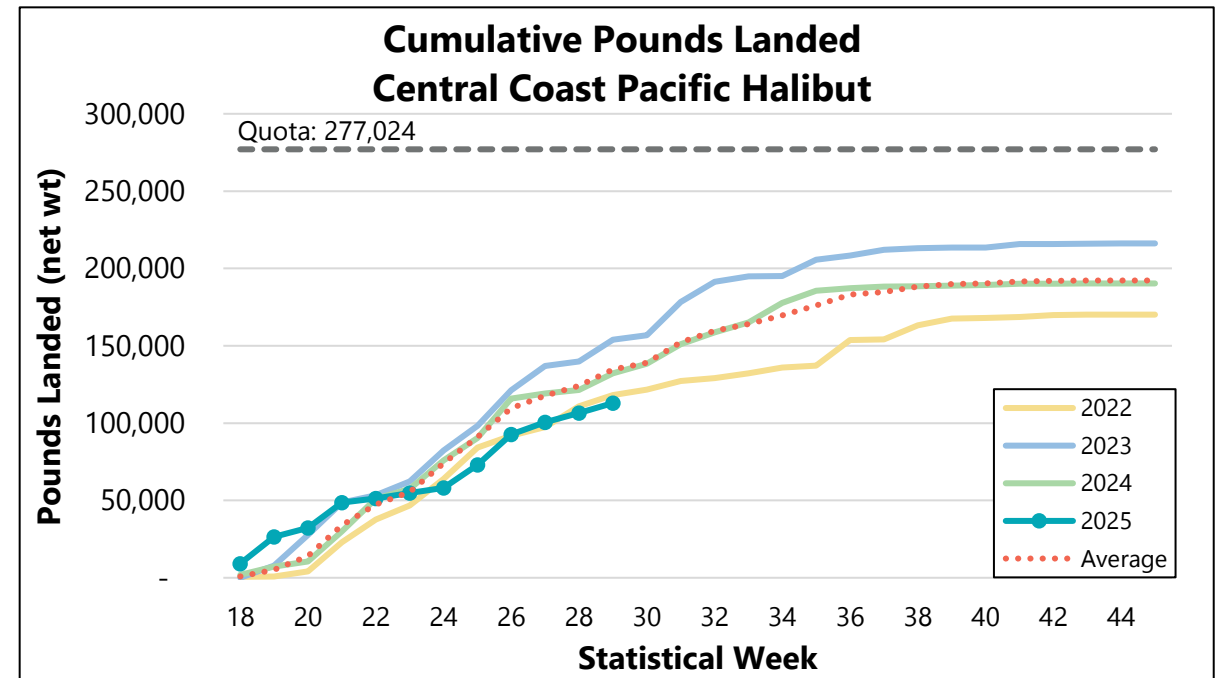
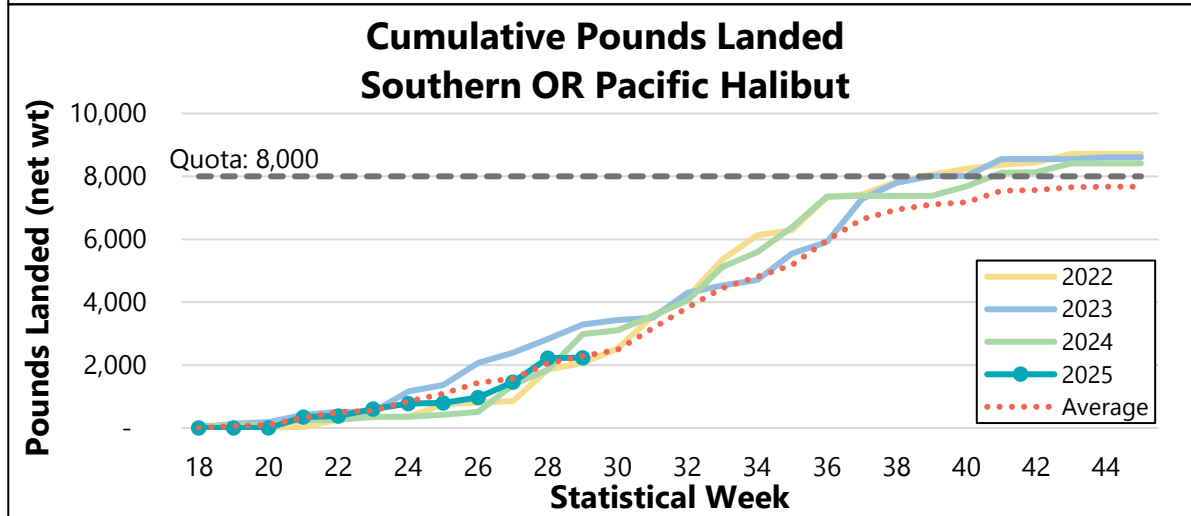
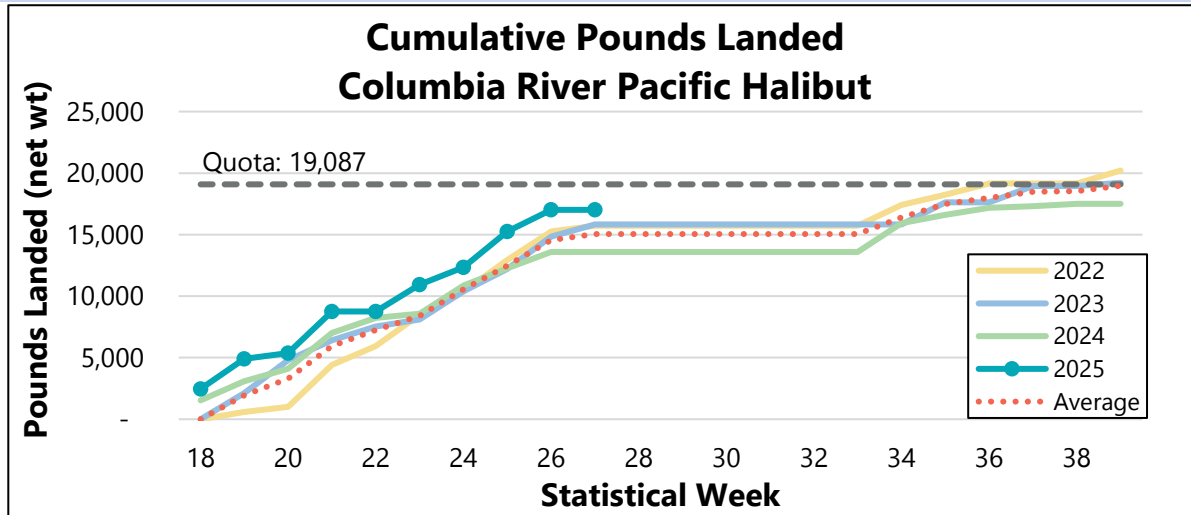
- Still a lot of pounds remaining for 2025
  - Columbia River: 8%
  - Central Coast: 46% (Spring all-depth allocation)
  - Southern Oregon: 72%
  - Total Oregon quota: 60%

Recreational Pacific Halibut Pounds Landed and Quota



\*Data for 2025 is through July 20

# Oregon Sport: Quota Attainment by Subarea

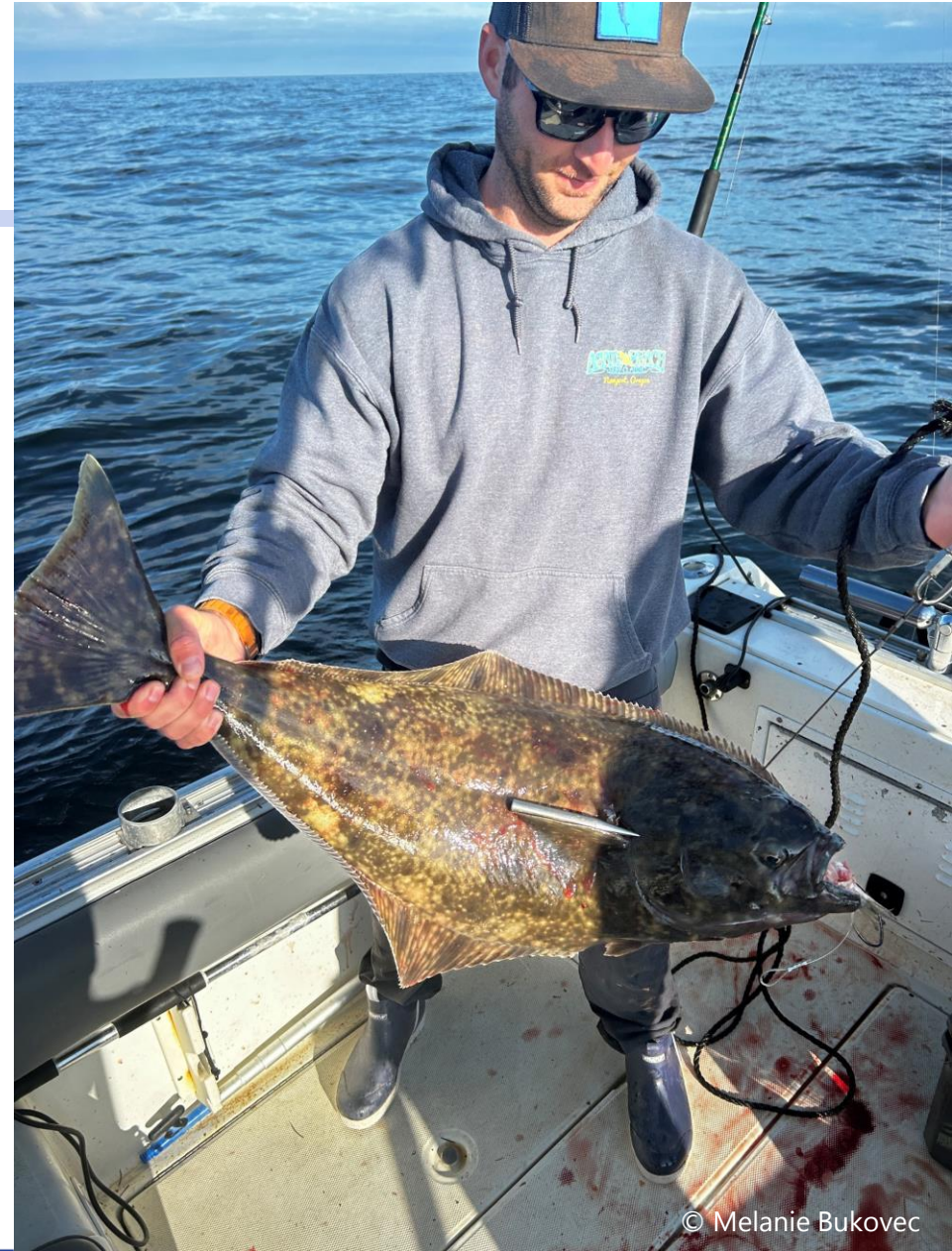


Data for 2025 is preliminary (through July 20)



# Planning for 2026

- 2026 CSP currently in development:
  - Any new suggestions / modifications?
  - ODFW to host a follow-up public meeting in September on proposed changes to the CSP
- 2026 quota will be set late January at the IPHC annual meeting
- Public meeting in February to discuss the 2026 season structure / all-depth fishing
- Oregon Fish & Wildlife Commission will adopt season dates in April



© Melanie Bukovec



# Changes to the Catch Sharing Plan (CSP) for 2025

- Columbia River Subarea
  - All-depth fishing Thursday, Friday, and Sunday during May and June
  - Mondays and Tuesdays in June were available as backup dates
- Central Coast Subarea
  - If the Area 2A FCEY is high, 10,000 lbs is allocated to the nearshore fishery and the remaining is shifted to the all-depth fishery
  - Removed language from the CSP limiting the Central Oregon Coast subarea all-depth seasons to a two or three-day opener per week
  - Summer all-depth season start date changed from the first Thursday/Friday to August 1
  - If the subarea quota is below 50,000 lbs prior to August 1, the summer all-depth season will be open every other week
  - If the subarea quota is 30,000 lbs or greater following Labor Day weekend, the summer all-depth season will be open every week



# ODFW Ideas for the 2026 CSP

- Columbia River Subarea

- Nearshore fishery open 7-days per week (superseded by the all-depth fishery when open)
- Remove the nearshore fishery (shift quota to all-depth)

- Central Coast Subarea

- The nearshore season opens May 1, seven days per week, only in waters shoreward of the 40-fathom (73 m) regulatory line, unless the FECY is less than 1.2M lbs, then it may be postponed to open June 1
- Frontload the subarea quota into the spring all-depth fishery to maximize opportunity
  - 75% of quota allocated to the spring all-depth regardless of FCEY

*Inseason changes are not guaranteed and have proven to be more complicated*



# Input Received via Phone or E-mail

- Really like the 7-days per week all-depth, allows anglers to fish around weather and work schedules
- Like starting the year with the 2-fish bag limit
- Allow chumming when fishing for all-depth halibut
- Increase the annual tag from 6 to 10 halibut or sell an additional tag





# Thank you

Marine Resources Program  
Oregon Department of Fish and  
Wildlife

2040 SE Marine Science Drive  
Newport, OR 97365  
541-867-4741

Contact us!

[christian.t.heath@odfw.oregon.gov](mailto:christian.t.heath@odfw.oregon.gov)

[melanie.a.bukovec@odfw.oregon.gov](mailto:melanie.a.bukovec@odfw.oregon.gov)

## PACIFIC HALIBUT TAGGING REMINDER

**IMMEDIATELY** upon landing and keeping a Pacific halibut or salmon,  
you need to **record the fish on your Combined Angling Tag**



### Immediately means:

- Prior to rebaiting and putting the rod back out to fish
- Before taking a snack or drink break
- Not 5, 10, or 15 minutes later
- Do not wait until you are on the way back to the dock



If using electronic tagging, make sure to download the MyODFW app and log in before you leave the dock

- If you are in an area with poor cell service, toggle the app to offline mode (under Settings) or put your phone in Airplane mode
- Once the app is open, you can record your fish
- When you get back into cell service, toggle back to online mode in the app, and it will upload tagged fish to the system

