

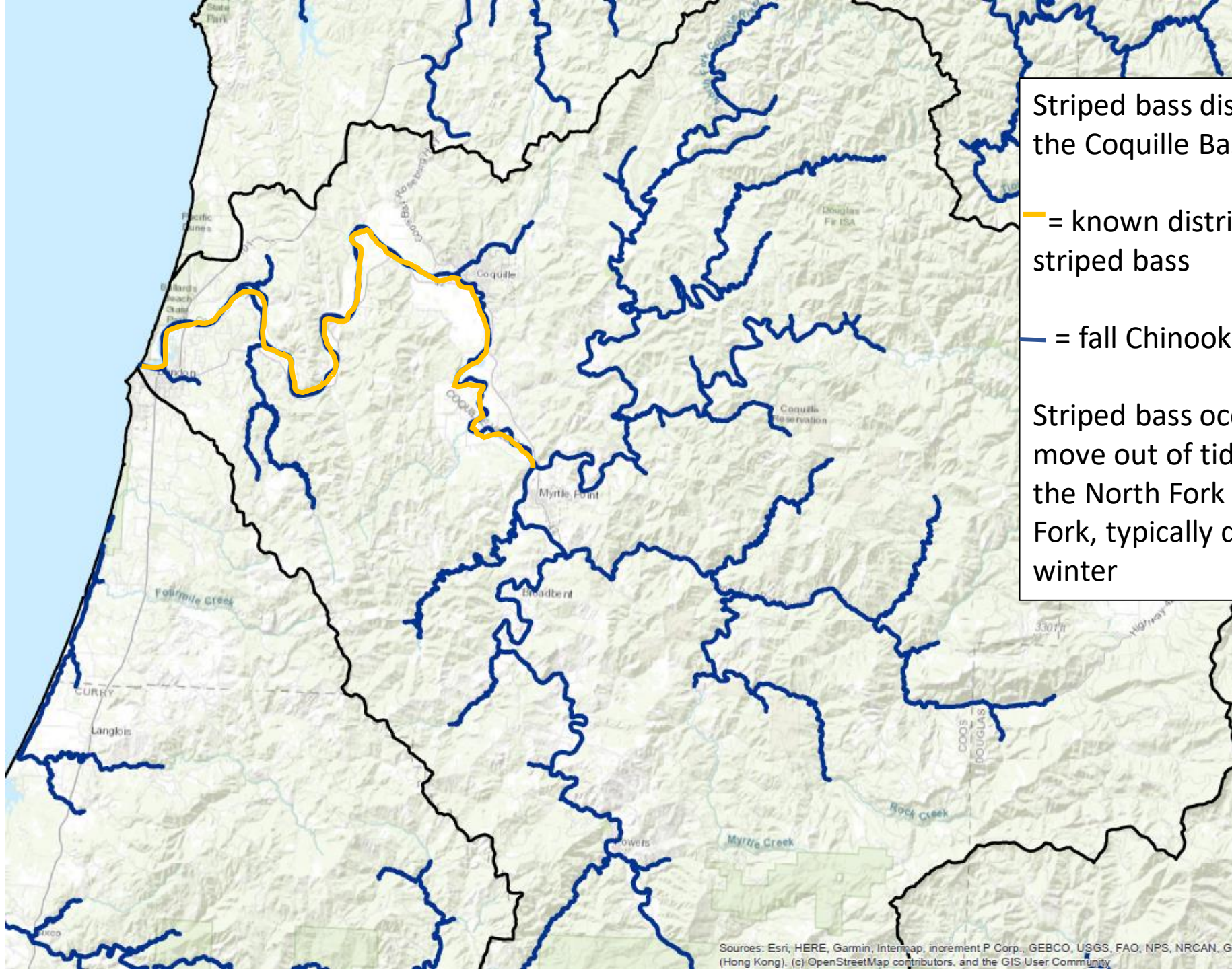
Smallmouth Bass distribution in Coquille Basin

— = known Smallmouth present

— = reported but unconfirmed smallmouth present

— = fall Chinook habitat

Smallmouth most likely present in lower portions of larger tributaries like East Fork Coquille, Middle Creek, Big Creek, Sandy Creek



Striped bass distribution in the Coquille Basin

— = known distribution of striped bass

— = fall Chinook habitat

Striped bass occasionally will move out of tidewater into the North Fork and South Fork, typically during the winter