



ACCESS: OREGON

A GUIDE TO ACCESSIBLE OUTDOOR
RECREATION AREAS THROUGHOUT THE STATE.







OREGON FOR ONE AND ALL

OREGON'S GREAT OUTDOORS offer a world of things to see and do—from fish hatcheries to wildlife areas to state parks to national forests. This guide is designed to make many of those sites easier to find and use.

A GUIDE TO THE GUIDE

The sites in this guide describe facilities with a level of accessibility or usability according to the standards of the Americans with Disabilities Act (ADA).

The general location of each site is indicated by a numbered box { **2** } on the fold-out state map and detailed regional map. Match the number with the appropriate site listing. Each listing includes a brief description of the site, driving directions, contact phone number, services available and accessibility of services.

SYMBOL KEY			
			
ADA ACCESSIBLE	USABLE	AVAILABLE	FACILITIES NEARBY
<i>Meets Americans with Disabilities Act Accessibility Guidelines (ADAAG) for barrier-free access or use.*</i>	<i>Significant access. Some individuals may need assistance.</i>	<i>Doesn't meet exact ADA standards, but can be used by most persons with disabilities.</i>	<i>Site doesn't necessarily meet ADA standards, but can be used by most persons with disabilities.</i>

*May not be accessible to all with disabilities due to topography and the primitive nature of the site.

Although this information was current and accurate at time of publication, changing conditions may affect the availability or accessibility of the site. Visitors are urged to call the site directly for specific information. Note, too, that this is not intended to be a complete list of accessible outdoor recreation sites throughout Oregon.

Oregon Department of Fish and Wildlife
4034 Fairview Industrial Drive SE
Salem, OR 97302
(503) 947-6000
www.dfw.state.or.us

For information on BLM or Oregon State
Parks sites, check their web sites:
www.or.blm.gov
www.prd.state.or.us

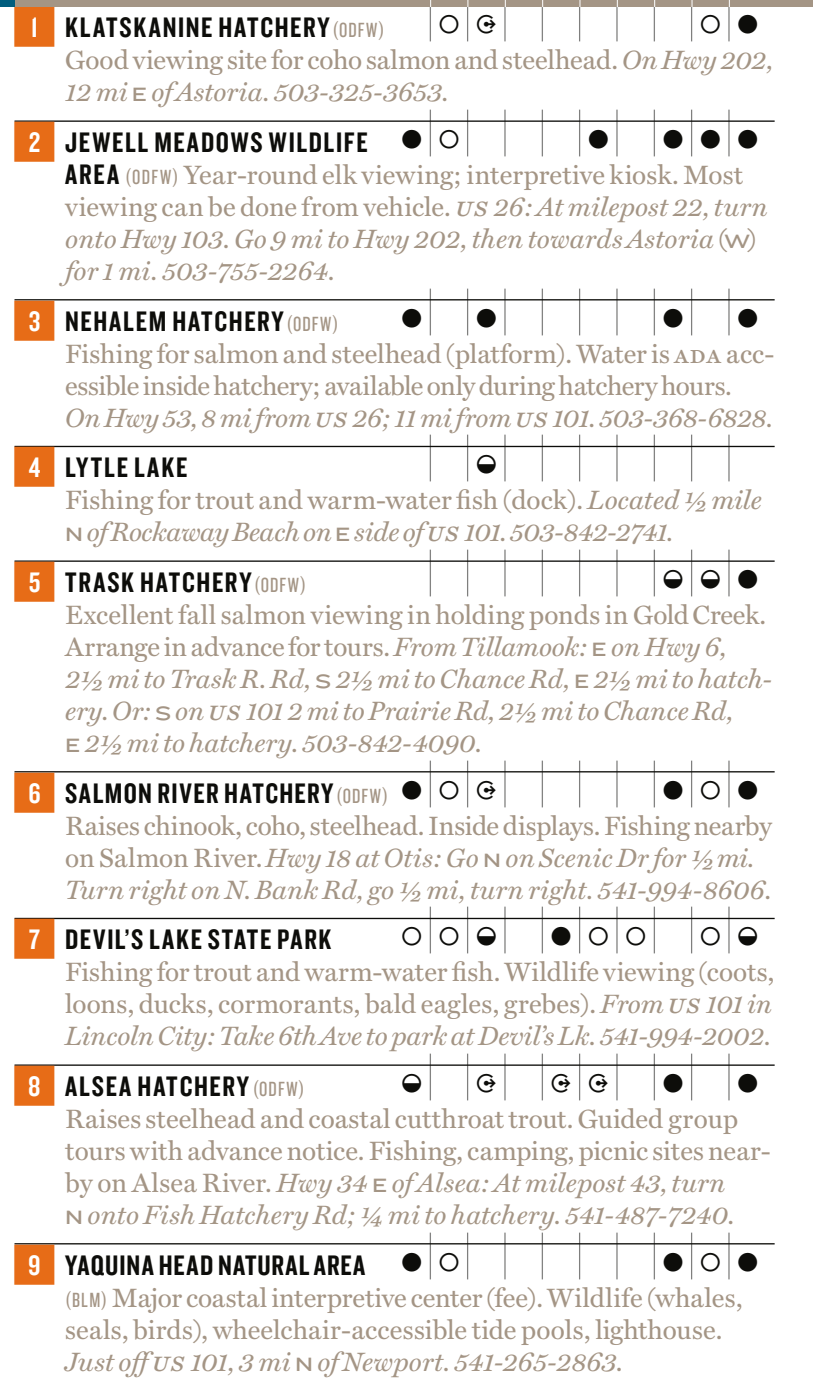
The Oregon Department of Fish and Wildlife prohibits discrimination in all of its programs and services on the basis of race, color, national origin, age, sex or disability. If you believe that you have been discriminated against as described above in any program, activity or facility, please contact the ADA Coordinator, PO Box 59, Portland, OR 97207, 503-872-5262 x5608 (or write Office for Human Resources, U.S. Fish and Wildlife Service, Department of the Interior, Washington, DC 20250)

This material will be furnished in an alternate format for people with disabilities upon request: please call (503) 947-6000





- ADA ACCESSIBLE
- USABLE
- AVAILABLE
- Ⓜ FACILITIES NEARBY





Rivers rule here, as they always have. The Willamette. The Columbia. Island builders, carriers of life. Salmon and steelhead, ancient sturgeon, bald eagles. Waterfowl rest here, perhaps wishing to settle longer on Sauvie Island's broad paradise.

N.W. WILLAMETTE WATERSHED DISTRICT



	restrooms	drinking water	fishing	hunting	camping	picnic site	boat access	interpretive site	view	parking
10 BONNEVILLE HATCHERY (ODFW)	○	○	⊗					○	○	●
Excellent fish viewing/feeding site (salmon, rainbow trout, sturgeon). Interpretive center, display ponds, self-guided tour. <i>I-84: Exit 40–Bonneville Dam/ Fish Hatchery about 40 mi E of Portland. 541-374-8393.</i>										
11 CASCADE HATCHERY (ODFW)								●	●	●
Good site for watching fall chinook and coho spawning. <i>I-84: Exit 41 after Bonneville Dam exit; about 41 mi E of Portland. 541-374-8381.</i>										
12 OXBOW HATCHERY (ODFW)	●	○	●					○	●	●
Salmon, steelhead fishing (platform). Viewing of fall spawning. <i>I-84 to Cascade Locks exit 44. Go through town, cross eastbound I-84 onramp to Frontage Rd. Go 1 mi to hatchery. 541-374-8540.</i>										
13 SANDY HATCHERY (ODFW)	●	●	⊗					●	○	●
Coho salmon spawning (fall), steelhead spawning (spring). Nature trail and fishing access nearby. <i>US 26 E to Sandy. Turn N at SE Tenneyck Rd, go 1½ mi, then turn left onto SE Fish Hatchery Rd, go ½ mi to entrance. 503-668-4222.</i>										
14 CLACKAMAS HATCHERY (ODFW)	●	●						●	●	●
Adult spring chinook viewing (May 15– Oct 1); Adult steelhead viewing (Dec 15–May 15). <i>Located in McIver State Park near Estacada. No fee for hatchery visit; park areas require fee. 503-630-7210.</i>										
15 BLUE LAKE REGIONAL PARK	●	○	●			○			○	●
Fishing for trout and warm-water fish. Wetlands with wildlife viewing platform. <i>Located between Maine Dr and Sandy Blvd off NE 223rd Ave. From I-84, take Fairview exit 14 and go N on 207th Ave to Sandy Blvd. Turn right onto Sandy and go E to 223rd Ave. Turn left, go N to Blue Lake Rd and the park. Metro information: 503-797-1700.</i>										
16 SAUVIE ISLAND WILDLIFE AREA (ODFW)	●		●				○	●	●	●
Fishing, hunting, wildlife viewing, boating, hiking trails 20 minutes from downtown Portland. Parking permits required. Get maps at office. <i>US 30 to Sauvie Island Bridge. Cross bridge, stay on NW Sauvie Island Rd for 2 mi. At ∇, bear left to park (about ¼ mi on the right). 503-621-3488.</i>										



The snows of yesteryear spill down this western slope of the Cascades, churned into some of the world's finest habitat for fish and those who seek them. The land, flattened now, sweeps into the regular rows of Oregon's garden, refreshed here and there with nutrient- and bird-rich wetlands.

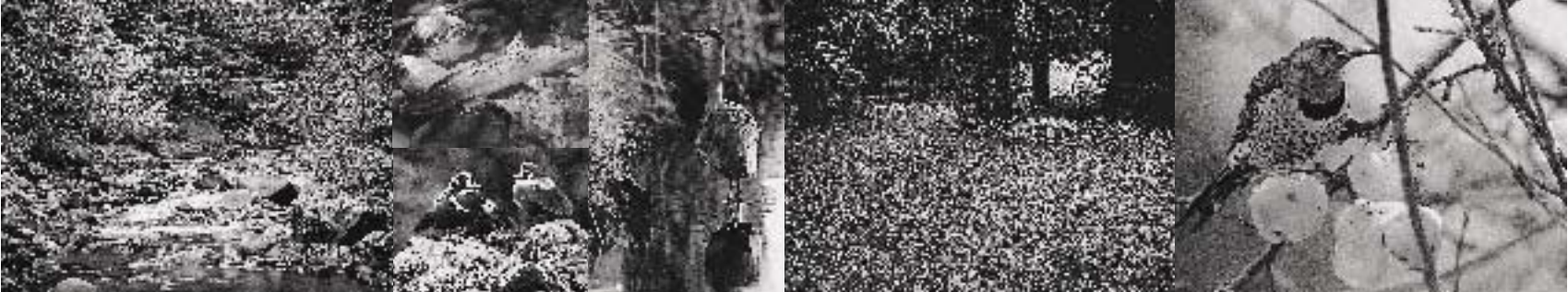
NW REGION S. WILLAMETTE WATERSHED DISTRICT



- ADA ACCESSIBLE
- USABLE
- AVAILABLE
- FACILITIES NEARBY

- restrooms
- drinking water
- fishing
- hunting
- camping
- picnic site
- boat access
- interpretive site
- view
- parking

- 17 BROWN-MINTO ISLAND COMPLEX** Warm-water fishing (platform). *Accessible from River Rd just S of Salem.*
- 18 CASCADE-GATEWAY PARK** (CITY of SALEM) Fishing for trout and warm-water fish. *From I-5: Take Mission St W to Turner Rd SE. Turn left and go to 2100 Turner Rd SE. 503-588-6261.*
- 19 DETROIT LAKE STATE PARK** Fishing, boating (rentals available), camping and picnic sites in 104-acre state park. *Located 2 mi W of Detroit on Hwy 22. 503-854-3406.*
- 20 E.E. WILSON WILDLIFE AREA** (ODFW) Game bird and waterfowl hunting; trout fishing. Access via gated paved roads. Call for details on seasonal events. *Take Hwy 99 W 10 mi N of Corvallis; turn E onto Camp Adair Rd. 541-745-5334.*
- 21 MARION FORKS HATCHERY** (ODFW) Raises chinook, steelhead, cutthroat trout. Camping and fishing nearby. Visitor services 18 mi W at Detroit Lake. *On Hwy 22 E of Idanha at milepost 66. 503-854-3522.*
- 22 ROARING RIVER HATCHERY** (ODFW) Raises rainbow trout and steelhead. Interpretive signage on ponds. Fishing and picnic sites 1 mi away in county park. *From Albany: Take US 20 east 6 mi to Hwy 226. Turn left, go 4 mi to Fish Hatchery Dr. Turn right, go 8 mi to hatchery. 503-394-2496.*
- 23 SOUTH SANTIAM HATCHERY** (ODFW) Raises spring chinook and summer steelhead. Fishing, boating, picnicking, camping sites nearby. *US 20: At 5 mi E of Sweet Home, cross reservoir on Foster Dam Rd, turn left onto River Rd for ½ mi. Turn left into hatchery. 541-367-3437.*



NW
REGION

S. WILLAMETTE WATERSHED DISTRICT *continued*



- ADA ACCESSIBLE
- USABLE
- AVAILABLE
- ⊕ FACILITIES NEARBY

- restrooms
- drinking water
- fishing
- hunting
- camping
- picnic site
- boat access
- interpretive site
- view
- parking

24 FERN RIDGE RESERVOIR & WILDLIFE AREA (ODFW) Many useable sites for hunting/viewing game birds and waterfowl. Gated roads have wheelchair space. Boating access and hiking trails. Get maps and bird lists at wildlife area headquarters office. *Located about 5 mi w of Eugene on both sides of Hwy 126. 541-935-2591.*

-
-
-
-
-
-
-
-
-
-

25 LEABURG HATCHERY (ODFW) Year-round viewing of rainbow and cutthroat trout and steelhead; landscaped viewing ponds. Picnic sites, swimming, boat access in nearby park. *On Hwy 126, 17 mi E of Springfield. Cross McKenzie River on Green Bridge, turn right into hatchery. 541-896-3294.*

-
-
-
-
-
-
-
-
-
-

26 MCKENZIE HATCHERY (ODFW) Visitors' center and picnic sites overlooking spawning area. Guided group tours with advance notice. Fishing for trout, steelhead and salmon nearby in McKenzie River. *On Hwy 126, 2 mi E of Springfield. 541-896-3513.*

-
-
- ⊕
-
-
-
-
-
-
-

27 WILLAMETTE HATCHERY (ODFW) Fish and game bird viewing, information kiosks. Nearby national forest has camping and fishing. *Hwy 58 just E of Oakridge: Turn N onto Salmon Creek Rd, then right onto Fish Hatchery Rd. 541-782-2933.*

-
-
- ⊕
- ⊕
-
-
-
-
-

28 JUNCTION CITY POND (ODFW) Stocked with rainbow trout. *3 mi S of Junction City on west side of Hwy 99.*

-
-
- ⊕
- ⊕
-
-
-
-
-

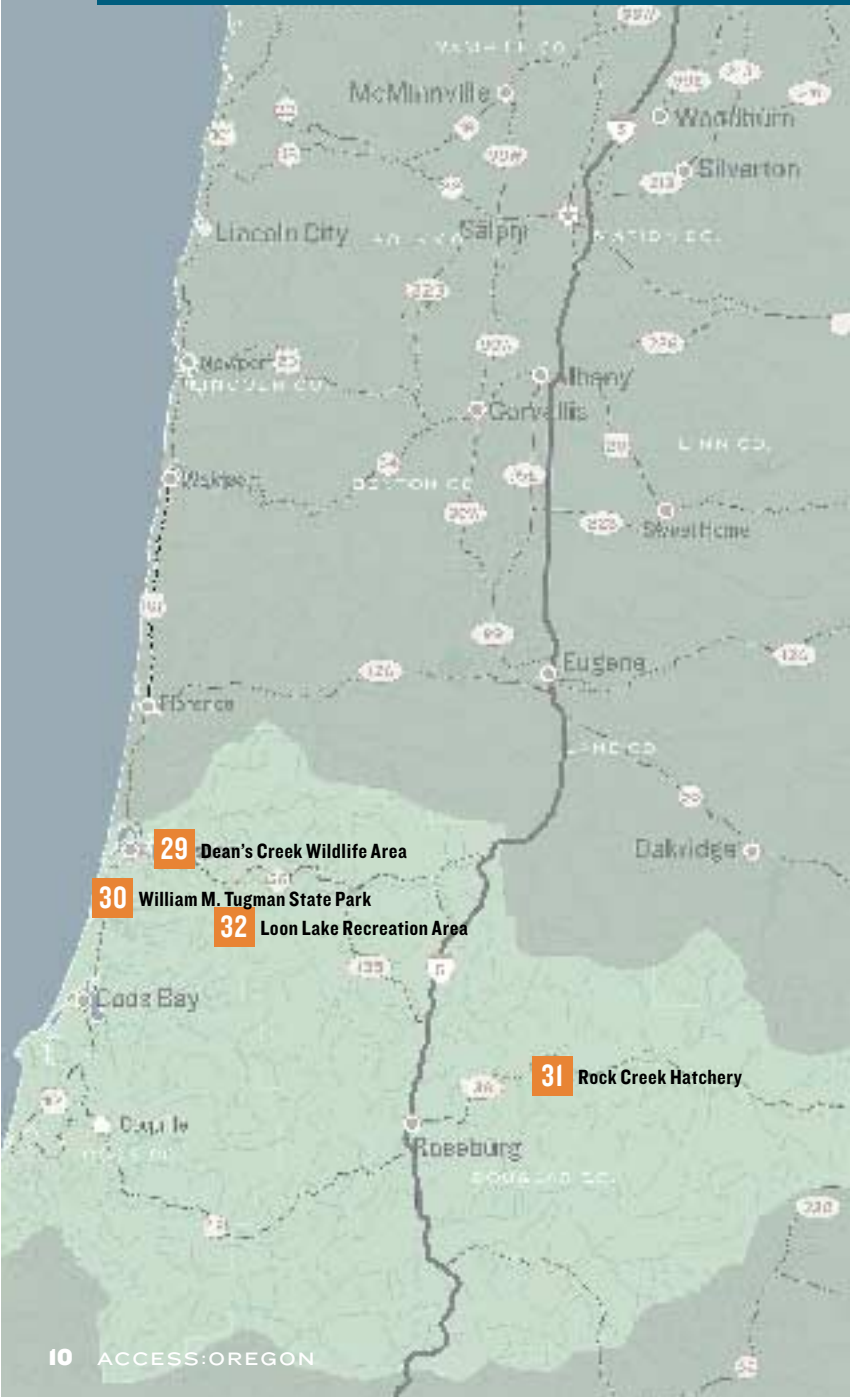


Here, along Oregon's spine, the Cascades earn their name. Westerly streams crash and sing like sirens, calling generations of salmon and steel-head home. Dark forests of Douglas fir hide a unique population of Columbian white-tailed deer and their black-tailed cousins.

SW REGION

UMPQUA

WATERSHED DISTRICT



	ADA ACCESSIBLE	USABLE	AVAILABLE	FACILITIES NEARBY	restrooms	drinking water	fishing	hunting	camping	picnic site	boat access	interpretive site	view	parking
29 DEAN'S CREEK WILDLIFE AREA	●	●	○	○							●	○	●	
(BLM) Year-round elk viewing; numerous birds and waterfowl. Viewing area stretches along 3 miles of Hwy 38 with two viewing areas and several pullouts. <i>On Hwy 38, about 5 mi E of Reedsport.</i>														
30 WILLIAM M. TUGMAN STATE PARK	●	○	●	●	●	○	○	○	○	○	○	○	○	●
Fishing for trout and warm-water fish (accessible dock). Wildlife viewing (crane, osprey, eagle, deer). <i>On US 101, 8 mi S of Reedsport. 541-888-4902.</i>														
31 ROCK CREEK HATCHERY (ODFW)	●	○	○	○	○	○	○	○	○	○	○	○	○	○
Raises coho and spring chinook, steelhead and rainbow trout. Accessible trail to viewing deck and signage. <i>From I-5 at Roseburg: Take Hwy 138 to Idleyd Park, go N on Rock Creek Rd about ¾ mi. 541-496-3484.</i>														
32 LOON LAKE RECREATION AREA	●	○	●	○	○	○	○	○	○	○	○	○	○	○
(BLM) Fishing for warm-water fish. <i>From I-5 near Cottage Grove: At Drain exit, go W on Hwy 38 to Mill Creek Rd (about 37 mi W of Drain). 541-751-4280.</i>														



In this rugged land, three mountain ranges converge. Black bear and mountain lion prowl. A volcano, blown centuries ago, holds Crater Lake, the nation's deepest. An untamed river cuts seaward, earning fame for white water and spring chinook. In the west, glorious beaches await discovery.

SW REGION

ROGUE WATERSHED DISTRICT



- ADA ACCESSIBLE
- USABLE
- AVAILABLE
- ⊕ FACILITIES NEARBY

restrooms
drinking water
fishing
hunting
camping
picnic site
boat access
interpretive site
view
parking

33 BUTTE FALLS HATCHERY (ODFW)

Raises chinook and coho salmon and rainbow trout. Fishing and camping areas nearby. *From Medford: Take Hwy 62 toward Crater Lake about 18 mi. Go right on Butte Falls Hwy about 16 mi. Hatchery is about 1 mi E of town of Butte Falls, on right. 541-865-3322.*

34 COLE M. RIVERS HATCHERY (ODFW)

This large hatchery raises a full range of fish. Features display ponds, viewing room and observation areas. *From Medford: Take Hwy 62 toward Crater Lake to milepost 29 at Casey State Park. Left onto Takelma Dr for ¾ mi, then right, across Rogue River. 541-878-2235.*

35 KENNETH DENMAN WILDLIFE AREA (ODFW)

Bird hunting from accessible paths. Warm-water fishing. Wildlife viewing and nature trail. Get maps at kiosks on site. ADA facilities nearby in Touvelle State Park. *From Central Point: I-5 exit 32, E on Pine St to Table Rock Rd, left (N) to E Gregory Rd. Go 2 mi then left at HQ sign. 541-826-8774.*

36 ELK RIVER HATCHERY (ODFW)

Raises chinook and steelhead. *From Port Orford: N on US 101, 3 mi to Elk River Rd, right for 7½ mi. 541-332-7025.*

37 DODGE BRIDGE (ODFW)

Good fishing site for trout, salmon, steelhead (platform). *Near Eagle Point: On Rogue River Dr, just off Hwy 234 W of Hwy 62. 541-826-8774.*

36 Elk River Hatchery

Cole M. Rivers Hatchery 34

Dodge Bridge 37 Butte Falls Hatchery 33

35 Kenneth Denman Wildlife Area



It might be the edge of the world, this windswept basalt upthrust at the northern edge of Oregon's high desert. Below rolls the Columbia, mother of salmon. To the south and east, a dramatic landscape stretches as far as the eye can see: mountain, crag, canyon, grassland, river and reservoir.

HD REGION

DESCHUTES

WATERSHED DISTRICT



- ADA ACCESSIBLE
- USABLE
- AVAILABLE
- ⊕ FACILITIES NEARBY

restrooms
drinking water
fishing
hunting
camping
picnic site
boat access
interpretive site
view
parking

38 THE DALLES FIELD OFFICE

(ODFW) Interpretive displays, information, other services. 3701 W. 13th St, The Dalles. 541-296-4628.

39 WHITE RIVER WILDLIFE AREA

(ODFW) Varied wildlife viewing, including wild turkey, elk, deer. Popular seasonal hunting area. Unimproved roads. US 197, 31 mi S of The Dalles: At blinking light, turn W into Tygh Valley, follow signs to Wamic. Go straight on Dobson Rd. Go through three 90-degree curves, then ¼ mi past last curve, turn left onto gravel road for about 1½ mi to cattle guard, then ½ mi further. 541-544-2126.

40 OAK SPRINGS HATCHERY (ODFW)

Raises rainbow trout and steelhead. Display pond, wildlife viewing, hiking, river access. Call to arrange group tours. Off US 197 between Maupin and Tygh Valley. 541-395-2546.

41 TROUT CREEK

BPA PROJECT OFFICE Information and customer services. Open limited hours. 1595 N Hwy 26, Madras, OR 97741. 541-475-2183.

42 ROUND BUTTE HATCHERY (ODFW)

Raises chinook, steelhead, brown trout. Public access by appointment only. Facilities do not meet ADA standards. Ten mi W of Madras at the end of Belmont Lane. Locked gate: call 541-475-6393 for entry.

43 THE COVE PALISADES

STATE PARK Year-round recreation site on Lake Billy Chinook. Trout fishing (platform), houseboat rentals, hiking, food service. 15 mi SW of Madras off US 97. 541-546-3412.

44 WIZARD FALLS HATCHERY (ODFW)

Park-like setting, display ponds, interpretive signage, fish viewing platform. Fishing, camping, hiking nearby. From US 20: Turn N at Camp Sherman/Metolius Recreation area sign. Go through Camp Sherman or stay right on Forest Rd 14 to hatchery sign. 541-595-6611.

45 PRINEVILLE FIELD OFFICE

(ODFW) Limited public hours; information and brochures available. 2042 SE Paulina Hwy, Prineville. 541-447-5111.



DESCHUTES WATERSHED DISTRICT

continued



- ADA ACCESSIBLE
- USABLE
- AVAILABLE
- ⦿ FACILITIES NEARBY

restrooms	drinking water	fishing	hunting	camping	picnic site	boat access	interpretive site	view	parking
-----------	----------------	---------	---------	---------	-------------	-------------	-------------------	------	---------

- 46

PRINEVILLE RESERVOIR

(BUREAU of RECLAMATION) Trout, warm-water fishing. No improvements; primitive access road. Gently sloping banks in many areas. ADA camping in nearby Prineville Reservoir State Park (541-447-4363). Access is from the state park; follow signs from Prineville.

●

○

●

○

○

○

○

○

○

○
- 47

HIGH DESERT REGIONAL OFFICE/DESCHUTES WATERSHED DISTRICT OFFICE

(ODFW) Interpretive displays, information, licenses, other services. Naturescape viewing area. Wheelchair ramp. US 97 S to Powers Rd, E to 61374 Parrell Rd, Bend. 541-388-6365.

○

○

○

○

○

○

○

○

○

○
- 48

FALL RIVER HATCHERY

(ODFW) Raises rainbow and brook trout. Limited facilities, but near excellent fly fishing and recreation sites in national forest. From Bend: S on US 97 to Fall River exit; W 1 mi to T intersection. Left for 1 mi; right on S. Century Dr. Go W 6 mi to hatchery (past milepost 12). 541-593-1510.

●

○

⦿

○

○

○

○

○

○

○
- 49

BLUE HOLE RECREATION SITE

(BLM) Salmon and steelhead fishing sites on the Deschutes River. Three mi N of Maupin on Lower Deschutes Access Rd. 541-416-6700 (Prineville District Office).

●

○

○

○

○

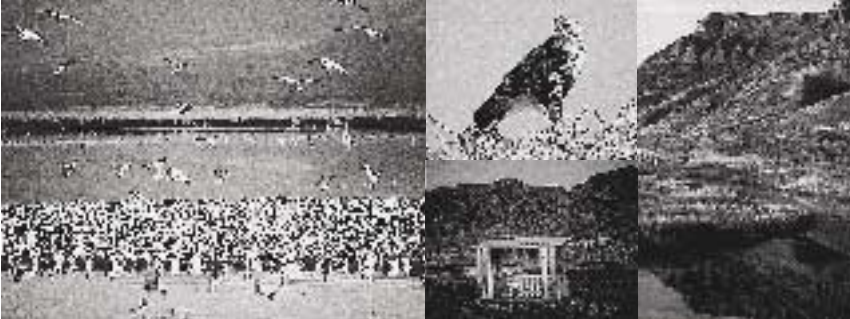
○

○

○

○

○



Thousands of acres of desert dryness lie in every direction, yet here is a vast expanse of water. Lakes, marshes, rivers, ponds. This wide plain is home to one of Oregon's largest, most diverse populations of bird life. Waterfowl. Upland game birds. Osprey. White pelicans. Eagles.

HD REGION KLAMATH WATERSHED DISTRICT



- ADA ACCESSIBLE
- USABLE
- AVAILABLE
- ⊕ FACILITIES NEARBY

restrooms
drinking water
fishing
hunting
camping
picnic site
boat access
interpretive site
view
parking

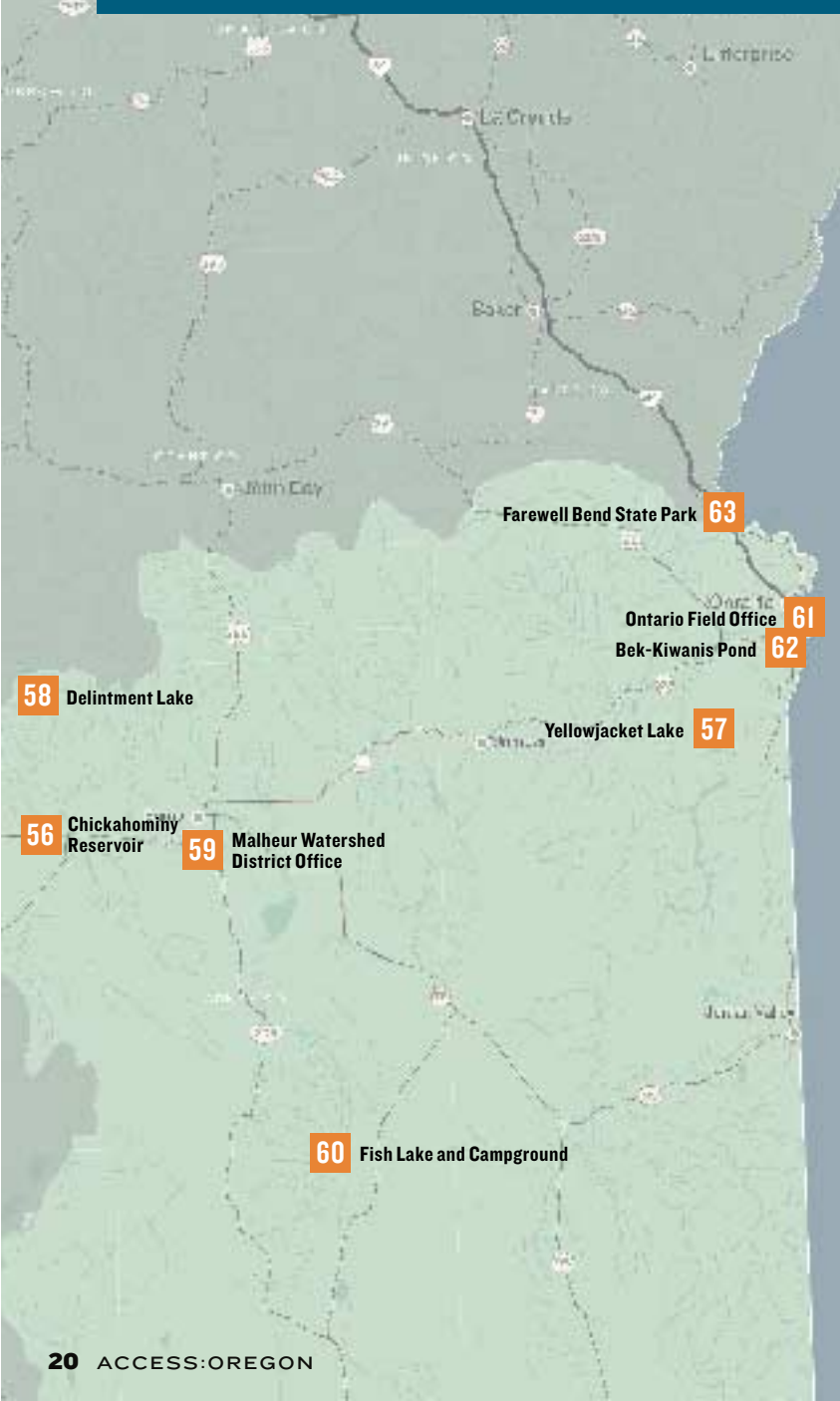
- 50 COLLIER MEMORIAL STATE PARK** Trout fishing, camping, hiking trail, picnic area, pioneer interpretive displays. *Near Chiloquin on US 97. 541-783-2471.*
- 51 KLAMATH HATCHERY** (ODFW) Raises coho salmon; rainbow, cutthroat, brook and brown trout; plus “desert-adapted” trout for warm southeastern Oregon waters. Viewing platform, interpretive displays. *From Klamath Falls: N on US 97, W on Hwy 62 toward Crater Lake, 8 mi to hatchery. 541-381-2278.*
- 52 KLAMATH WILDLIFE AREA** (ODFW) Abundant bird life: waterfowl, upland game birds, eagles, ospreys, white pelicans. Bird hunting blinds accessible with assistance. Fishing in surrounding waters. *On US 97, 4 mi S of Klamath Falls. 541-883-5734.*
- 53 TOPSY RECREATION SITE** (BLM) Camping and fishing site (platform). Wildlife viewing (eagles, pelicans, great blue herons, ducks and geese). *Located 1 mi S of Hwy 66, about 20 mi SW of Klamath Falls, or 44 mi E of Ashland. Follow signs from Hwy 66. 541-883-6916.*
- 54 SUMMER LAKE WILDLIFE AREA** (ODFW) Excellent wildlife viewing. Bird hunting from dikes (useable with assistance): Oct–Jan. Trout and warm-water fishing. *On Hwy 31 about 70 mi SE of US 97 intersection. 541-943-3152.*
- 55 WARNER WETLANDS** (BLM) Waterfowl viewing. Bird’s-eye view of Warner Wetlands area is available from a 1,000-ft trail (less than 8 percent grade) with interpretive signs along the way. *19 mi NE of Plush, on County Rd 3-12. 541-947-2177.*



Oregon's "empty quarter" is empty only of people. Of natural wonders and contrast, it has an abundance. Marshlands attract more than 300 species of birds. Stark mountains, juniper forests and glacial valleys provide a dramatic home for bear, deer, elk, bighorn sheep and pronghorn.

HD REGION

MALHEUR WATERSHED DISTRICT



- ADA ACCESSIBLE
- USABLE
- AVAILABLE
- ⊕ FACILITIES NEARBY

restrooms
drinking water
fishing
hunting
camping
picnic site
boat access
interpretive site
view
parking

56 CHICKAHOMINY RESERVOIR

Trout fishing. Restrooms in primitive BLM campground beside this 530-acre reservoir. *Just N of US 20, 100 mi E of Bend, 32 mi W of Burns.*

57 YELLOWJACKET LAKE

Rainbow trout fishing from shore or boat. *35 mi NW of Burns: Turn right on County Rd 127; take Forest Rd 47 to 37 and follow signs in Malheur Nat'l Forest. 541-573-4300.*

58 DELINTMENT LAKE

(USFS CAMPGROUND) Trout fishing (platform). Campsites available. *In Ochoco Nat'l Forest 50 mi NW of Hines. 541-573-6582.*

59 MALHEUR WATERSHED DISTRICT OFFICE (ODFW)

Interpretive displays, information, licenses, other services. *237 S Hines Blvd, Hines, OR 97738. 541-573-6582.*

60 FISH LAKE & CAMPGROUND (BLM)

Trout fishing. *On Steens Mtn Loop Rd E of Frenchglen.*

61 ONTARIO FIELD OFFICE (ODFW)

Visitor information and licenses. *3814 Clark Blvd, Ontario, OR 97914. 541-889-6975.*

62 BEK-KIWANIS POND

Warm-water fishing in pond associated with 17-acre city park. *In Ontario, corner of NW 8th Ave and 4th St. 541-889-8574.*

63 FAREWELL BEND STATE PARK

Recreation area on Snake River. Warm-water fishing (dock). *Off I-84, 20 mi N of Ontario (exit 356). 541-869-2365.*



The Columbia Plateau forms the northern boundary of a watershed that drains the vast Oregon interior. Salmon and steelhead fight their way from the Pacific to spawn in desert streams. Mule deer and pronghorns share a landscape in places with names like *Murderers Creek* and *Bear Valley*.

NE
REGION

JOHN DAY
WATERSHED DISTRICT



	restrooms	drinking water	fishing	hunting	camping	picnic site	boat access	interpretive site	view	parking
●	ADA ACCESSIBLE	●	USABLE	○	AVAILABLE	Ⓜ	FACILITIES NEARBY			

64

IRRIGON HATCHERY (ODFW)

●○Ⓜ

Raises summer steelhead. Visitors' center, wildlife viewing, picnic table. Call ahead for tours. Fishing nearby. *I-84 to exit 168, then Hwy 730 N to hatchery sign. Turn on W 8th St, go N to Columbia River. 541-922-5732.*

65

UMATILLA HATCHERY (ODFW)

●○Ⓜ

Raises fall and spring chinook, summer steelhead. Some "Michigan Ponds," new to Oregon. Fishing nearby. *I-84 to exit 168, then Hwy 730 N to hatchery sign. Turn on W 8th St, go N to Columbia River. 541-922-5659.*



This land of dramatic contrasts rises sharply from Hells Canyon, the continent's deepest, to Oregon's white-capped "Alps." In this wildly beautiful place, emphasis is firmly on the *wild*: Its forests, valleys and slopes are home to Rocky Mountain elk, bighorn sheep, mountain goat, bear and cougar.

NE REGION

GRANDE RONDE

WATERSHED DISTRICT



- ADA ACCESSIBLE
- USABLE
- AVAILABLE
- ⊕ FACILITIES NEARBY

- restrooms
- drinking water
- fishing
- hunting
- camping
- picnic site
- boat access
- interpretive site
- view
- parking

66 LOOKINGGLASS HATCHERY (ODFW) ● ○ | | | | | | | | ● ○ ●
 Raises endangered species of chinook. Interpretive displays. Currently under quarantine (fish disease); call for status. *From Hwy 82 in Elgin: Turn N at blinking yellow light, then right on N 10th. Go ½ mi to Y; bear right for about 2 mi to stop sign. Turn right for about 10 mi to Merts Store, then bear right ½ mi. Turn right at hatchery sign, go 2 mi and cross Lookingglass Creek. Take Lookingglass Creek Rd to left for 2 mi. 541-437-9723.*

67 WALLOWA HATCHERY (ODFW) ● ○ ⊕ | ⊕ ⊕ | | | | | | ○ ○ ●
 Nature trail, waterfowl viewing. Call ahead for tours. Picnic sites, camping, fishing, boating at Wallowa State Park. *From Hwy 82: About 1 mi W of Enterprise, turn onto Fish Hatchery Lane, go ¾ mi. 541-426-4467.*

68 LADD MARSH WILDLIFE AREA | | | | | | | | ● ○ ●
 (ODFW) Waterfowl and songbird viewing, 1-mi nature trail, spring wildflowers. Designated handicapped parking. *Exit 268 off I-84, 5 mi S of LaGrande. 541-963-4954.*

69 JOHN W. MCKEAN WILDLIFE VIEWING AREA (ODFW) ○ | | | | | | | | ● ○ ○
 Elk and deer viewing. Horse-drawn tours/lectures (winter; fee); trailer is wheelchair-accessible. Seasonal hunting. Located within Elkhorn Wildlife Area. *From I-84 exit 285-North Powder: Follow signs for Anthony Lakes for 4 mi. Go straight when lake road takes hard left. Follow Wildlife Viewing Area signs and arrows for 4½ mi. 541-898-2826.*





TO PROTECT AND ENHANCE A LIVING OREGON

The mission of the Oregon Department of Fish and Wildlife is to protect and enhance Oregon's fish and wildlife and their habitats for use and enjoyment by present and future generations. That mission extends to non-hunted and non-commercial species.

It also includes serving humans who seek to enjoy our state's natural wealth. Each year, the department handles 900,000 fishing licenses and tags, and 1.3 million applications for hunting licenses, tags and controlled hunts.

Permits, licenses, applications, reservations and informative materials are available from the department's regional and district offices. Helpful information is also available on the department's web site at <http://www.dfw.state.or.us>.

HEADQUARTERS OFFICE

2501 SW 1st Avenue
Portland, OR 97201
Tel: 503-872-5310
Fax: 503-872-5276

HIGH DESERT REGIONAL OFFICE

Deschutes Watershed District Office
61374 Parrell Road
Bend, OR 97845
Tel: 541-388-6363
Fax: 541-388-6281

NORTHEAST REGIONAL OFFICE

Grande Ronde Watershed
District Office
107 20th Street
LaGrande, OR 97850
Tel: 541-963-2138
Fax: 541-963-6670

NORTHWEST REGIONAL OFFICE

North Willamette Watershed
District Office
17330 SE Evelyn Street
Clackamas, OR 97015
Tel: 503-576-2000
Fax: 503-657-2050

SOUTHWEST REGIONAL OFFICE

Umpqua Watershed District Office
4192 N Umpqua Hwy
Roseburg, OR 97470
Tel: 541-440-3353
Fax: 541-673-0372

