

SMALL ECONOMY BAT HOUSE

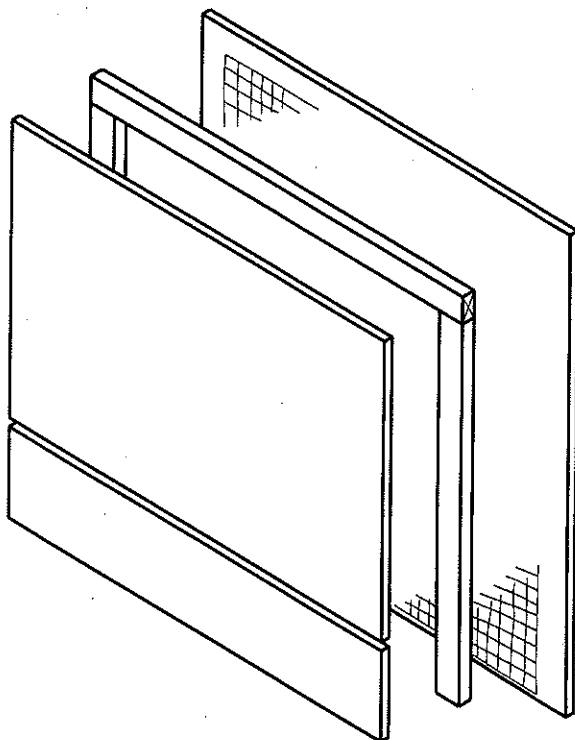
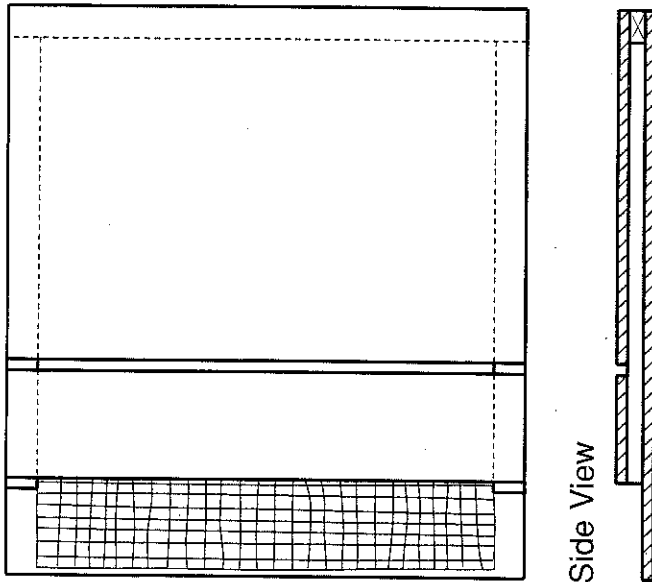


FIGURE 3

Materials Needed (makes 1)

- 1/4 sheet (2' x 4') 1/2" cdx (outdoor grade) plywood
- 1 piece 1" x 2" (0.75" x 1.75" finished) x 8' pine (furring strip)
- 1/8" mesh HDPE (plastic) netting, 20" x 22.5"
[such as Internet product #XV-1670 (1-800-328-8456)]
- 20-30 1 5/8" multipurpose (drywall) screws
- 1 pint latex acrylic paint
- 1 tube paintable acrylic caulk
- 5/16" staples

Recommended tools

- | | |
|--------------------------------|--------------|
| table saw or handsaw | caulking gun |
| variable speed reversing drill | scissors |
| Phillips bit for drill | stapler |
| tape measure or yardstick | paintbrush |

Construction procedure

1. Measure and cut plywood into three pieces:
26.5" x 24" 16.5" x 24" 5" x 24"
2. Measure and cut furring into one 24" and two 20 1/4" pieces.
3. Screw back to furring, caulking first. Start with 24" piece at top.
4. Staple the netting to inside surface of back, starting at the bottom. Be sure netting lies flat (curve down) and does not pucker.
5. Screw front to furring, top piece first (don't forget to caulk). Leave 1/2" vent space between top and bottom front pieces.
6. Caulk around outside joints if needed to seal roosting chamber.
7. Attach a 3" x 28" board to the top as a roof, if desired.
8. Paint exterior at least twice.

Optional Modifications to the Small Economy Bat House

1. Wider bat houses can be built for larger colonies. Be sure to adjust dimensions for back and front pieces, ceiling furring strip, and netting. A 3/4" support spacer may be required in the center of the roosting chamber for bat houses over 24" wide.
2. Two bat houses can be placed back-to-back mounted on poles. Before assembly, a horizontal 3/4" slot should be cut in the back of each house about 10" from the bottom edge of the back piece to improve ventilation and permit movement of bats between houses. Two pieces of wood, 4" x 4 1/4" x 3/4", screwed horizontally to each side will join the two boxes. One 3" x 22" vertical piece, attached to each side over the horizontal pieces, blocks light but allows bats and air to enter. Leave a 3/4" space between the two houses, and roughen the wood surfaces or cover the back of each with plastic netting. Do not cover the vents. A tin roof covering both houses protects them and helps prevent overheating. Eaves should be about 3" in southern areas and about 1 1/2" in the North.
3. Ventilation may not be necessary in colder climates. In this case, the front should be a single piece 23" long. Smaller bat houses should not be used in northern areas.