



Oregon Sage-Grouse Development Siting Tool

Supports siting new development in southeastern Oregon to **minimize impacts to sage-grouse** and **reduce mitigation obligation** for developers.



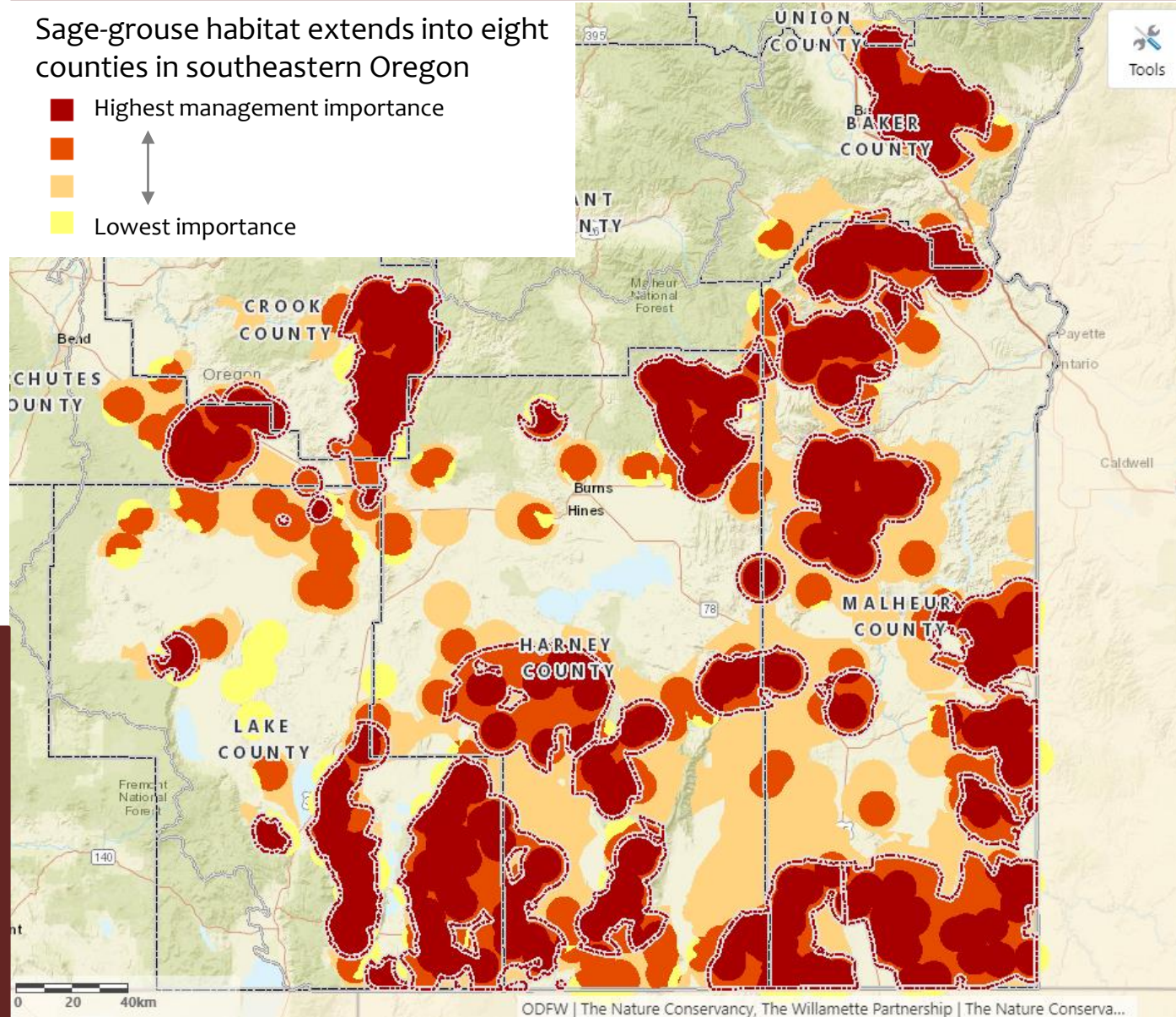
(Jeremy Roberts, Conservation Media)

For more information contact Oregon Department of Fish & Wildlife
<https://www.dfw.state.or.us/wildlife/sagegrouse/>

A web-based tool provides an easy way for developers to access site-specific information about mitigation in sage-grouse habitat.

Sage-grouse habitat extends into eight counties in southeastern Oregon

- Highest management importance
- ↕
- Lowest importance



ODFW | The Nature Conservancy, The Willamette Partnership | The Nature Conserva...



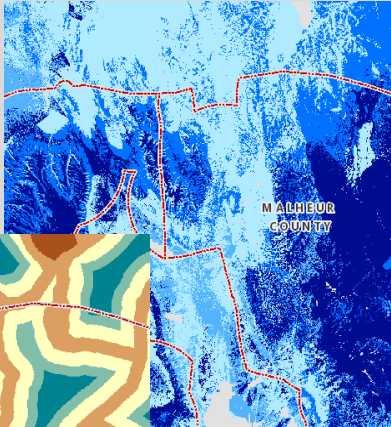
Access the Sage-Grouse Development Siting Tool here:
http://tools.oregonexplorer.info/OE_HtmlViewer/index.html?viewer=sage_grouse_dev_siting

Oregon Sage-Grouse Development Siting Tool

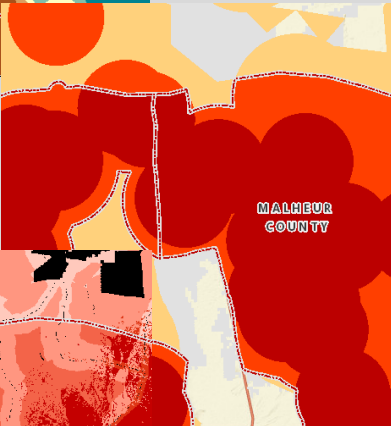
http://tools.oregonexplorer.info/OE_HtmlViewer/index.html?viewer=sage_grouse_dev_siting

1. Explore Interactive Maps

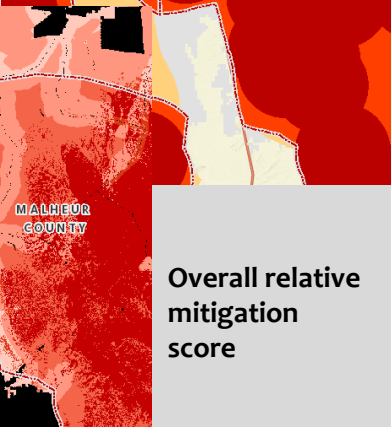
Vegetation condition



Existing development impacts

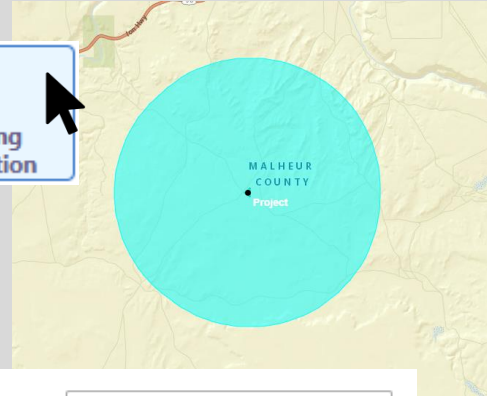
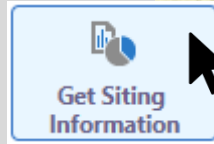


Management importance



Overall relative mitigation score

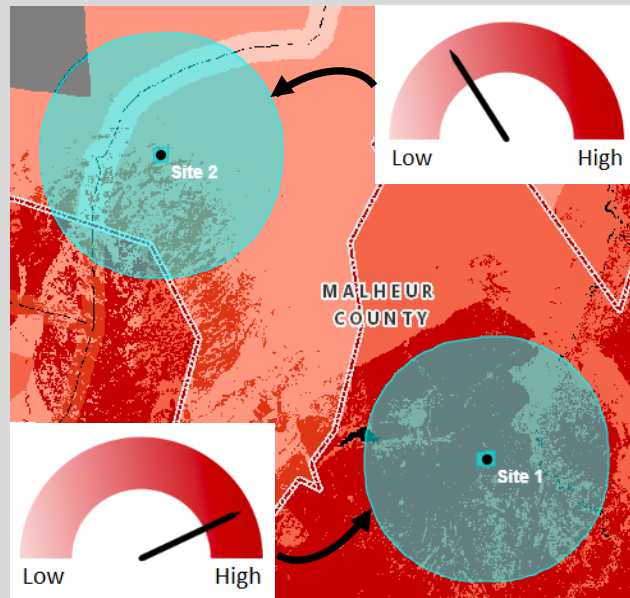
2. Enter Project Information



Project Name

Development Type *
<-- Select Development Type-->

3. Compare Potential Sites



4. Review Your Report

Access information about the project area

Project Area

Direct Footprint

Total Direct Footprint: 104 Acres
Direct Footprint in Sage-Grouse Habitat: 104 Acres
Direct Footprint in Close Proximity to a Lek: No

Indirect Impact Area

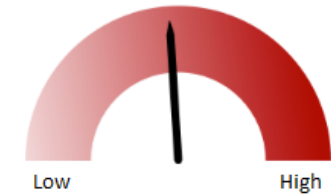
Total Indirect Impact Area: 22,749 Acres
Indirect Impact in Sage-Grouse Habitat: 22,005 Acres
Habitat Designation(s): Low density habitat

Land Management/Ownership: Private, Federal (BLM)

Get your relative mitigation score

Mitigation Hierarchy

Avoidance: Avoidance may apply in your identified area.
Minimization: See full report.
Compensatory Mitigation: 48 out of 100



Find contact information

Contact Information

County Planning Department
Phone: 541-473-5185
Address: 251 "B" St. West #12 Vale, OR 97918
ODFW District:
Phone: 541-889-6975
Address: 3814 Clark Blvd. Ontario, OR 97914

View report and download spatial data

[View Full Report](#)

[Shapefiles](#)

[KML/KMZ](#)